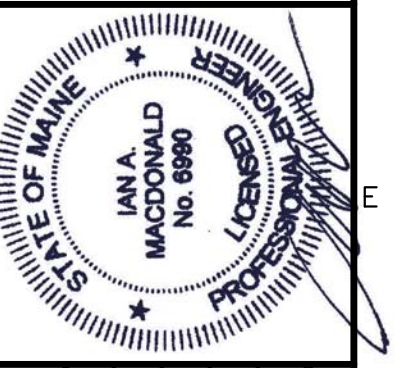


Winton Scott Architects
5 Milk Street
Portland, Maine 04101
207 774 4811
www.wintonscott.com

Architecture / Planning
Preservation Architecture
Interior Architecture

Allied Engineering
Structural Mechanical Electrical Commissioning

168 Verona Street
Portland, Maine 04103
1-207-231-2266
F-207-231-2266
Web: www.allied-eng.com



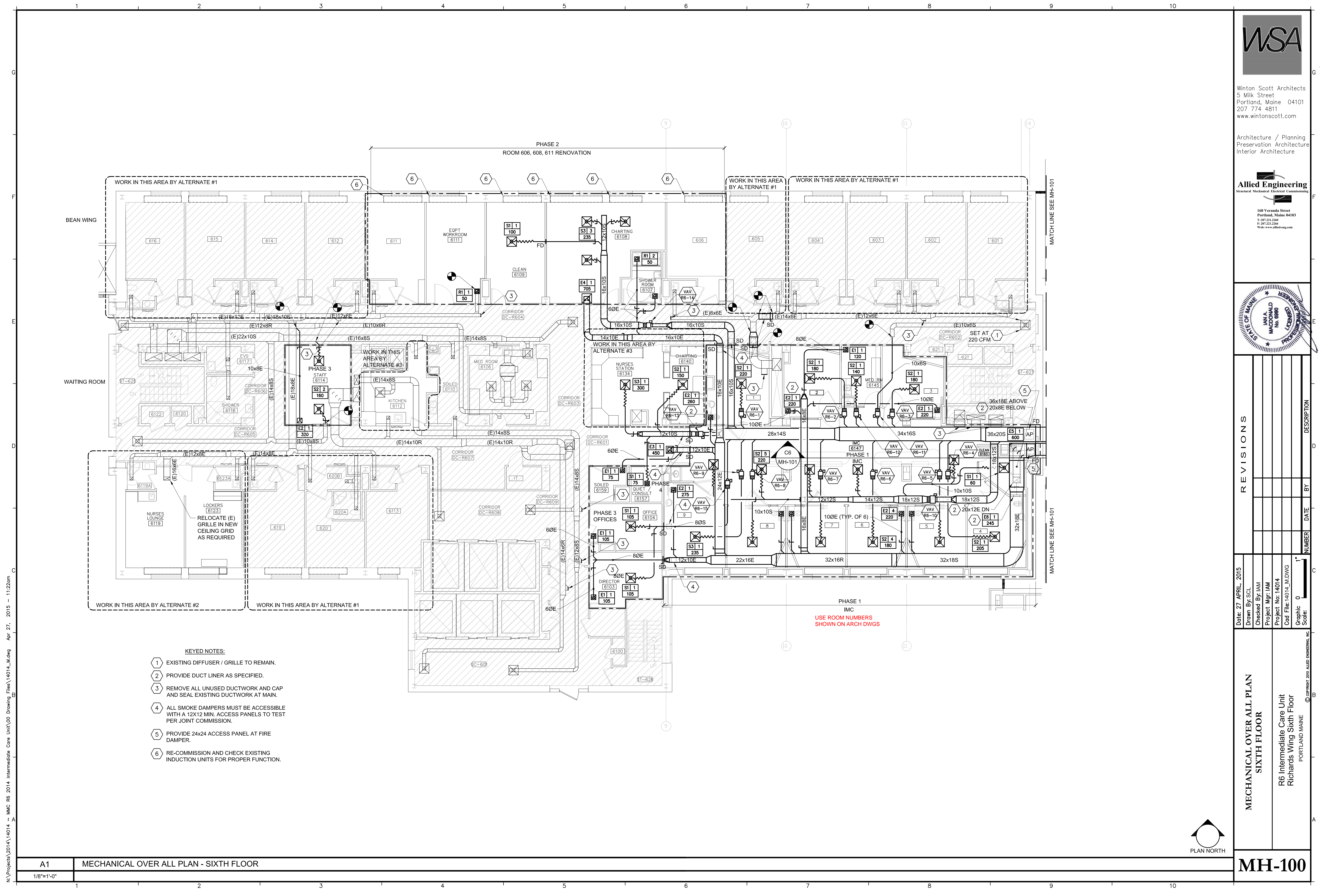
REVISIONS	DESCRIPTION	BY	DATE	NUMBER

Date: 27 APRIL, 2015
Drawn By: SCL
Checked By: IAM
Project Mgr: IAM
Project No: 14014
Cad File: 14014_M.DWG
Graphic: 0
Scale: 1"

**MECHANICAL OVER ALL PLAN
SIXTH FLOOR**

R6 Intermediate Care Unit
Richards Wing Sixth Floor
PORTLAND MAINE

MH-100



- KEYED NOTES:**
- 1 EXISTING DIFFUSER / GRILLE TO REMAIN.
 - 2 PROVIDE DUCT LINER AS SPECIFIED.
 - 3 REMOVE ALL UNUSED DUCTWORK AND CAP AND SEAL EXISTING DUCTWORK AT MAIN.
 - 4 ALL SMOKE DAMPERS MUST BE ACCESSIBLE WITH A 12X12 MIN. ACCESS PANELS TO TEST PER JOINT COMMISSION.
 - 5 PROVIDE 24x24 ACCESS PANEL AT FIRE DAMPER.
 - 6 RE-COMMISSION AND CHECK EXISTING INDUCTION UNITS FOR PROPER FUNCTION.

N:\Projects\2014\14014 - MMC R6 2014 Intermediate Care Unit\00 Drawing Files\14014_M.dwg Apr 27, 2015 - 11:22am

A1 MECHANICAL OVER ALL PLAN - SIXTH FLOOR

1/8"=1'-0"

