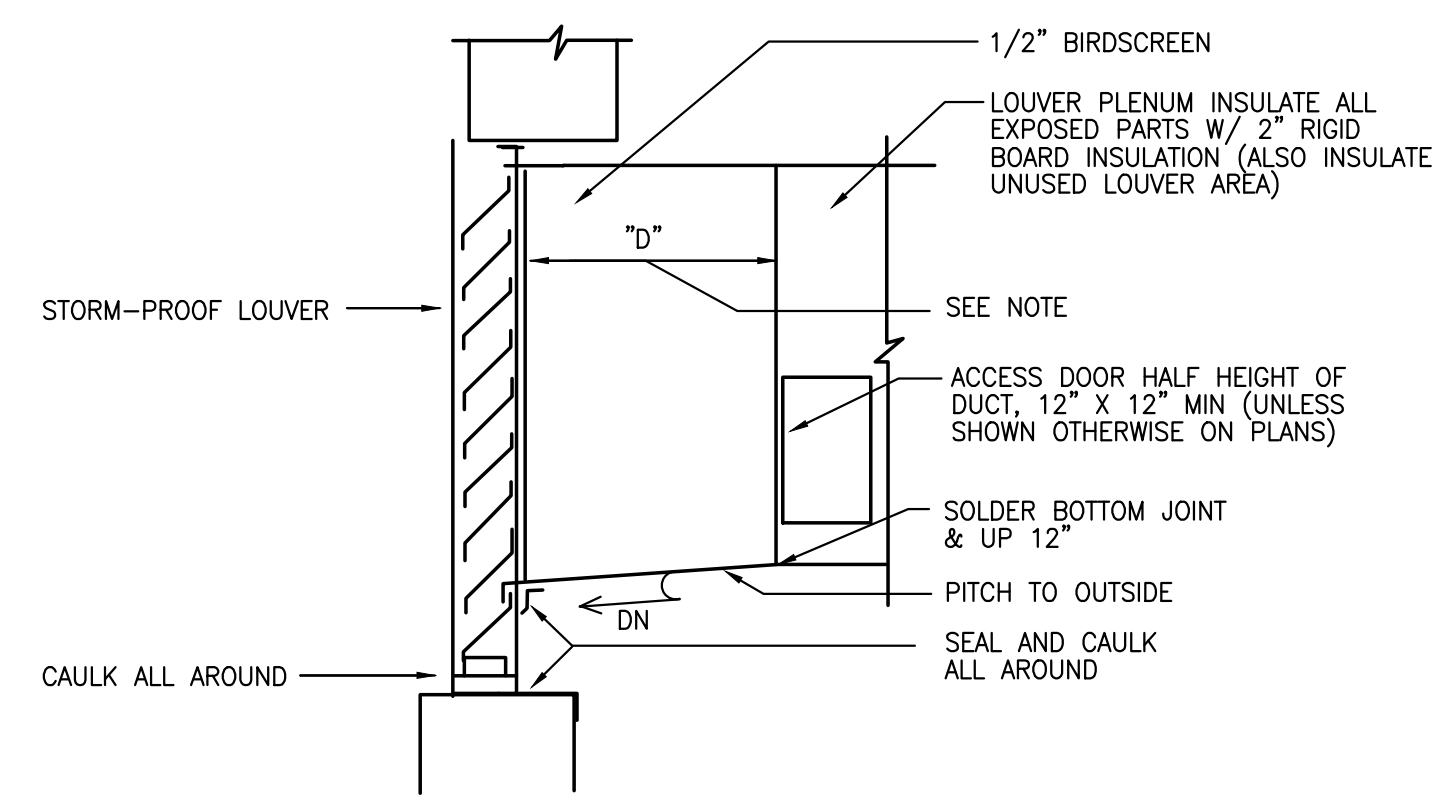


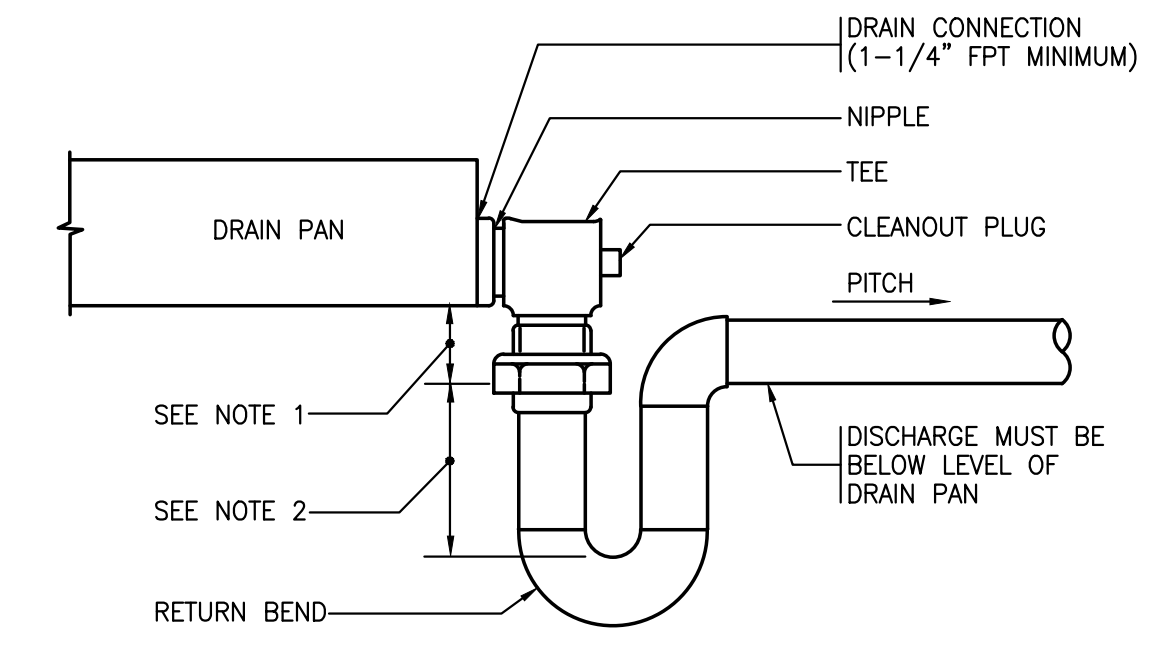
- NOTES:**
1. DUCTS SHALL NOT BE HUNG FROM OR SUPPORTED BY HUNG CEILING.
 2. FOR DUCTS NOT EXCEEDING 2 SQ.FT. IN CROSS-SECTIONAL AREA, HANGERS SHALL BE OF METAL NOT LESS THAN 1/16".
 3. FOR DUCTS LARGER THAN 2 SQ.FT. IN CROSS-SECTIONAL AREA, HANGERS SHALL BE OF METAL NOT LESS THAN 1" BY 1/8".
 4. FOR ALL DUCTS, HANGERS SHALL BE TURNED UNDER AND FASTENED TO THE BOTTOM OF DUCT AS SHOWN ABOVE.
 5. WHERE CROSS-SECTIONAL AREA OF DUCT EXCEEDS 8 SQ.FT. HANGERS SHALL BE SPACED NOT MORE THAN 4 FT. ON CENTERS.

1 DUCT SUPPORT FROM METAL DECK
M601



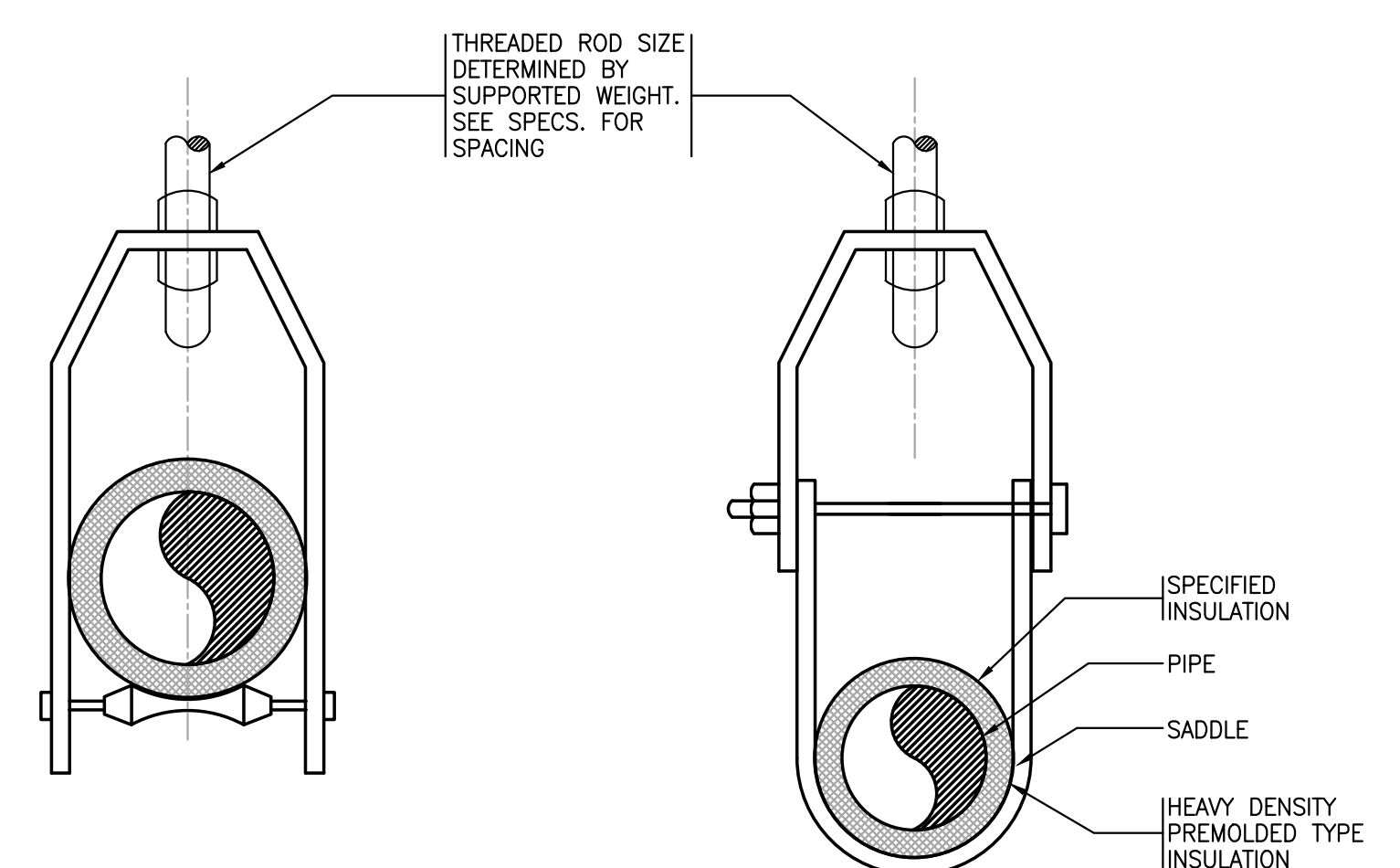
NOTE: WHEN "D" IS OVER 24" PROVIDE 3/4" DRAIN AT 5'-0" CENTERS (IF DEPTH INTO PAPER IS GREATER THAN 5'-0", 6" FROM LOUVER WITH TRAP)

2 LOUVER CONNECTION
M601

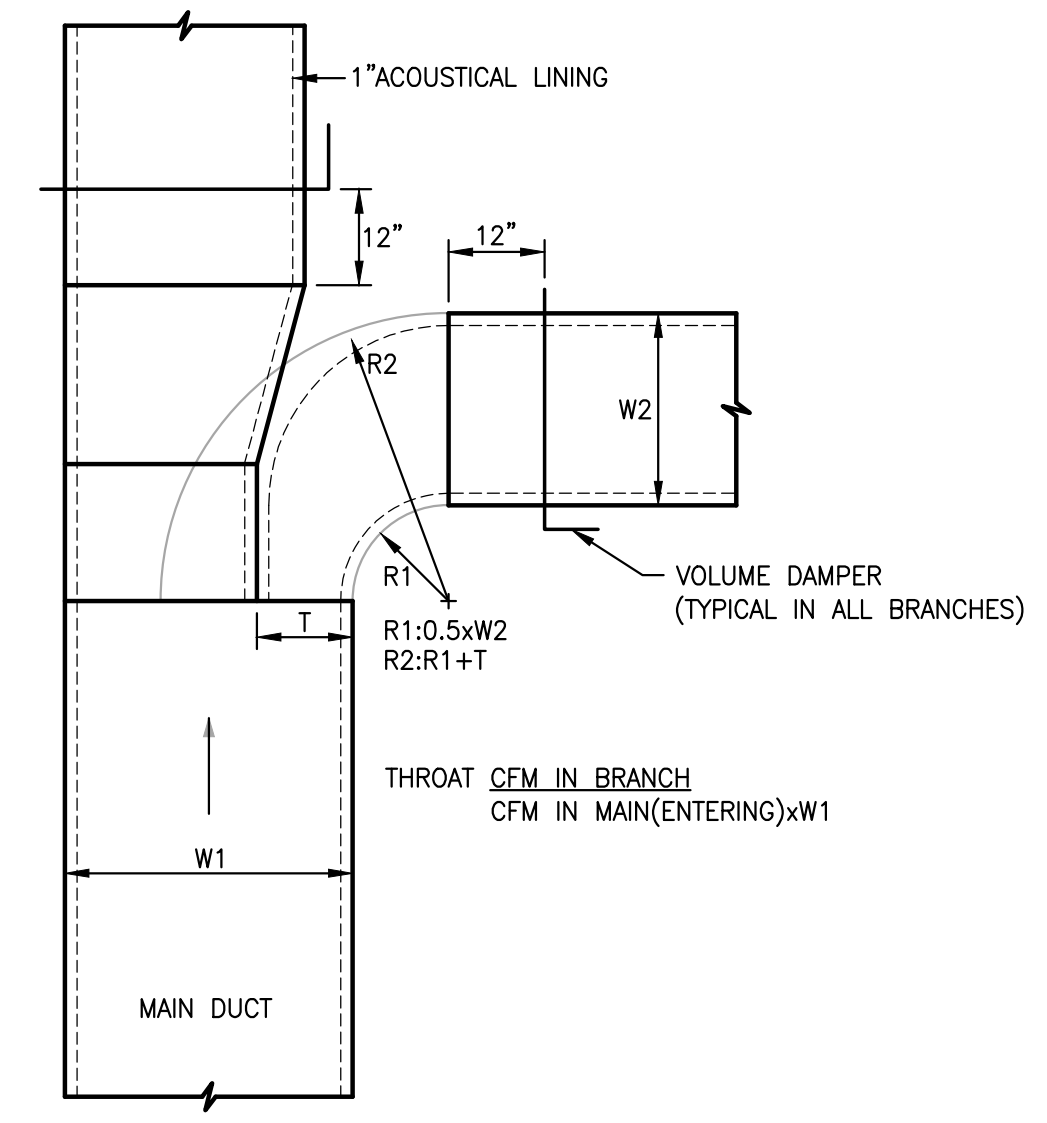


- NOTES:**
1. X" = MINIMUM DROP EQUAL TO NEGATIVE INTERNAL STATIC PRESSURE AT FAN INLET
 2. X/2 + 1" = (MINIMUM 5 INCHES)
 3. ADD STRUCTURAL STEEL TO RAISE THE BOTTOM OF THE UNIT TO ACCOMMODATE DROP AND TRAP HEIGHT
 4. PITCH DRAIN FOR PROPER RUN-OFF AND DISCHARGE TO APPROVED RECEPTACLE.
 5. SUPPORT DRAIN LINES TO PREVENT SAG AND CONDENSATE OVERFLOW.
 6. MANUALLY PRIME FILL TRAP BEFORE START-UP TO FORM INITIAL DRAIN SEAL.

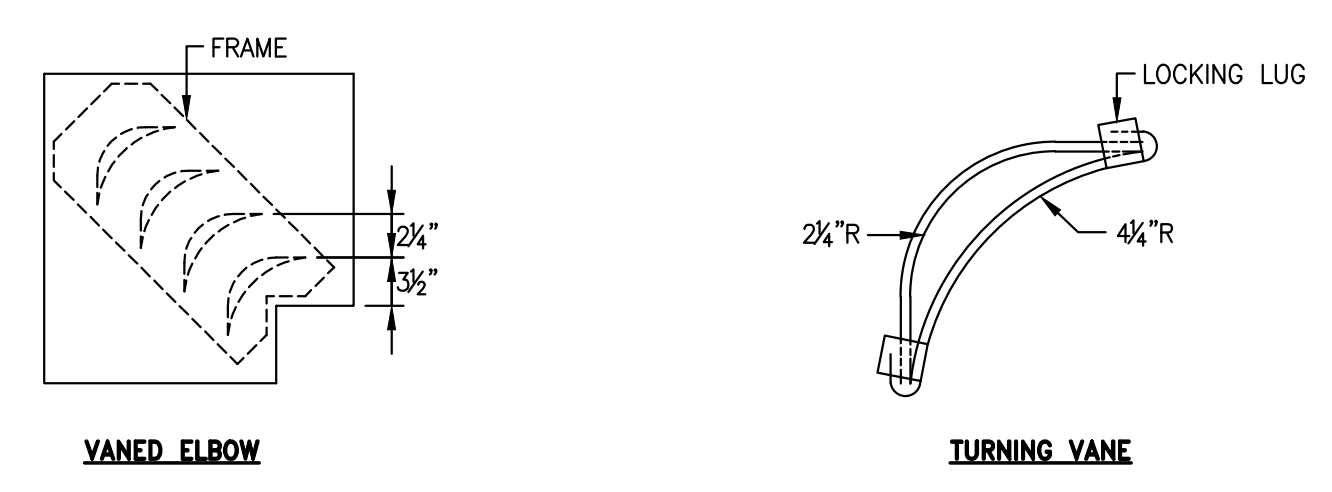
3 DRAIN PAN WATER SEAL PIPING
M601 DRAW THRU UNIT



4 CLEVIS ROLLER HANGER WITH SADDLE
M601

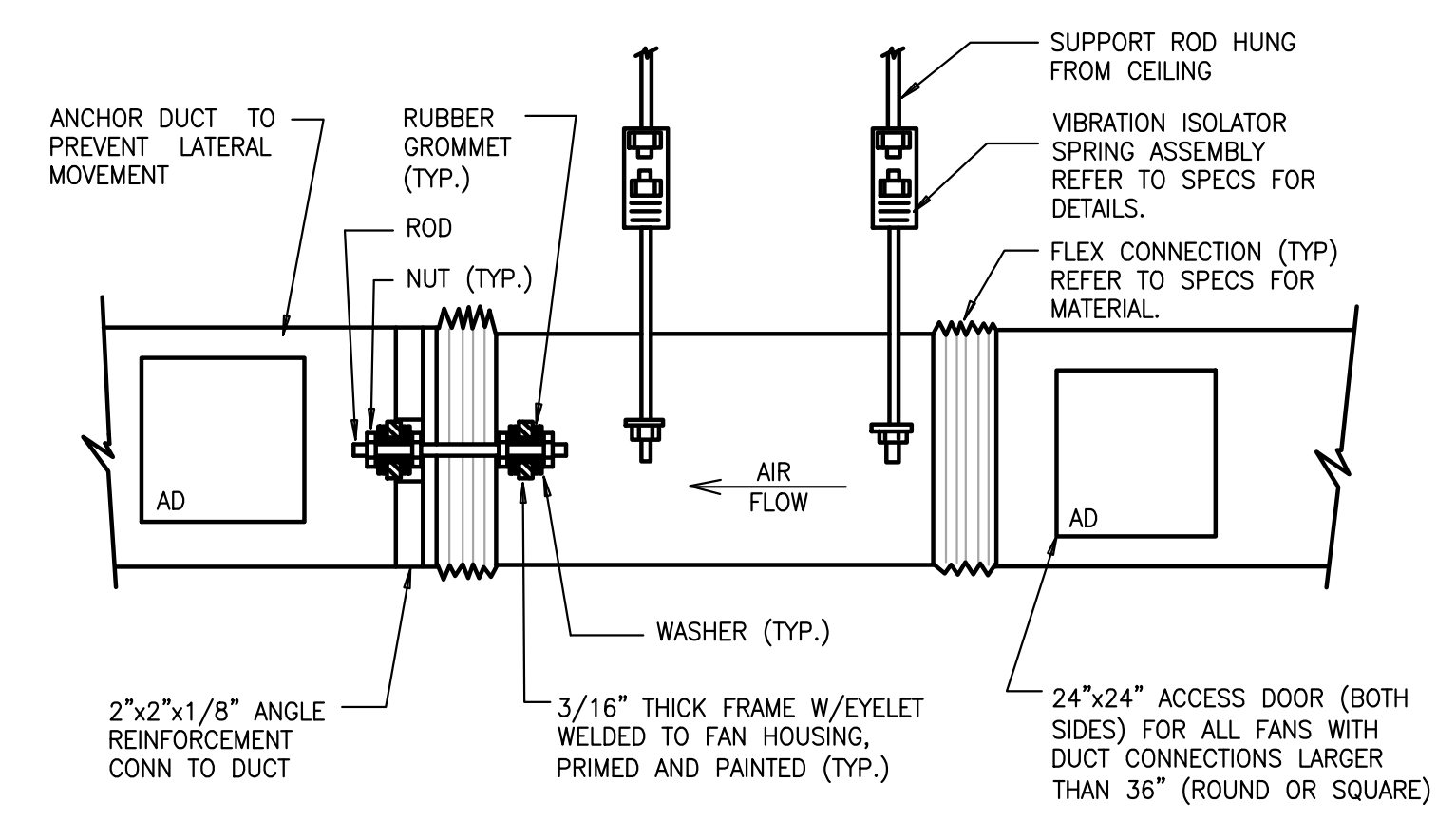


5 LOW PRESSURE BRANCH TAKE-OFF
M601



- NOTES:**
1. LOCKING LUGS INTERNAL WITH VANE
 2. MAXIMUM UNSUPPORTED VANE LENGTH 48"
 3. FRAMES-BOLTED OR RIVETED TO ELBOW
 4. VANES AND FRAMES-SAME GAUGE AS ELBOW

6 DOUBLE THICKNESS TURNING VANES
M601 FOR SQUARE ELBOWS



7 INLINE FAN DETAIL
M601

No.	Date	Description

REVISION		
No.	Date	Description

PROJECT
**Maine Medical Center
Bean Building
AHU Replacement**

DRAWING TITLE
**MECHANICAL
DETAILS**

Drawn By	DAC	Drawing No.	M-601
Checked By	DPR		
Date	12/01/2014		
Scale	NONE		
Project No.	B140263-000		