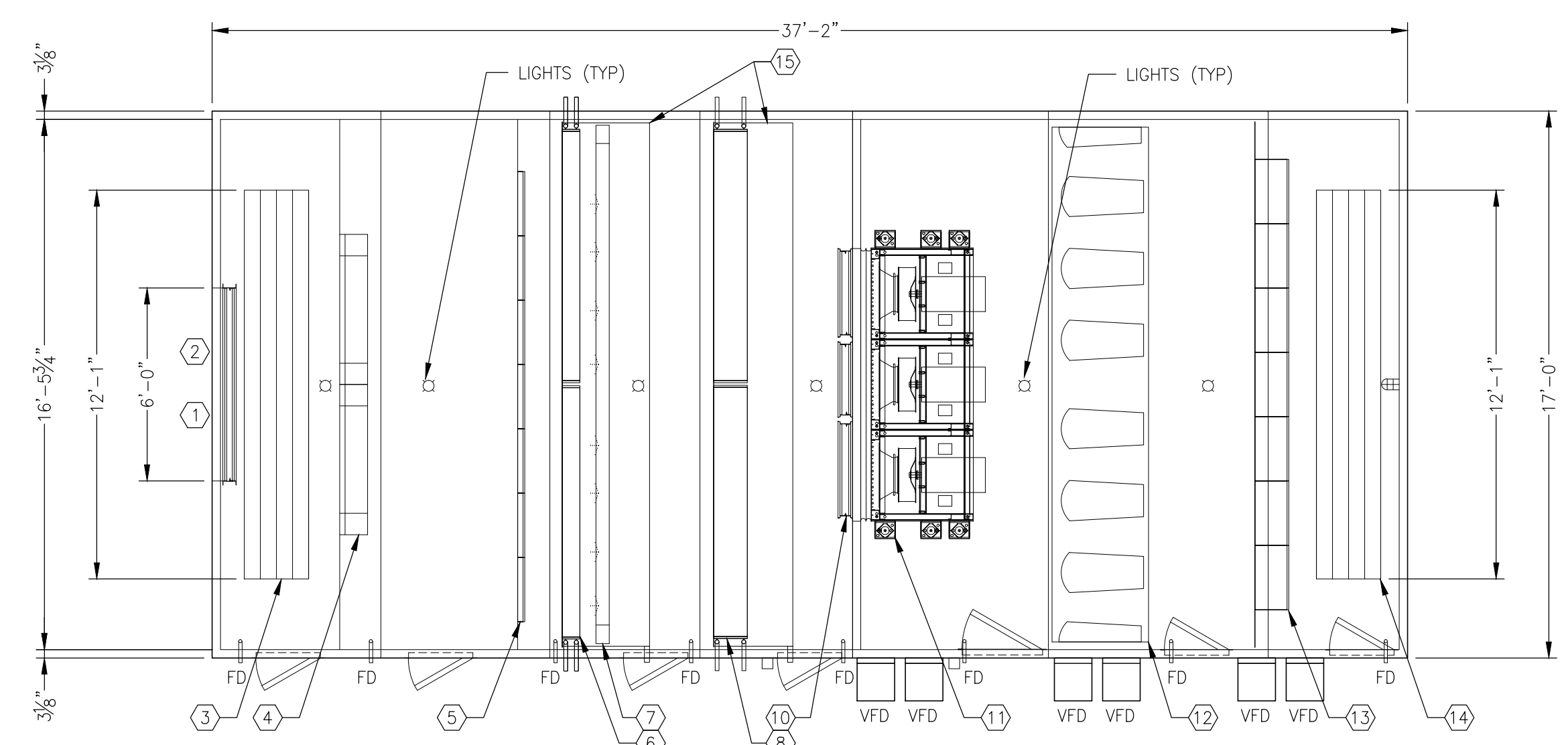
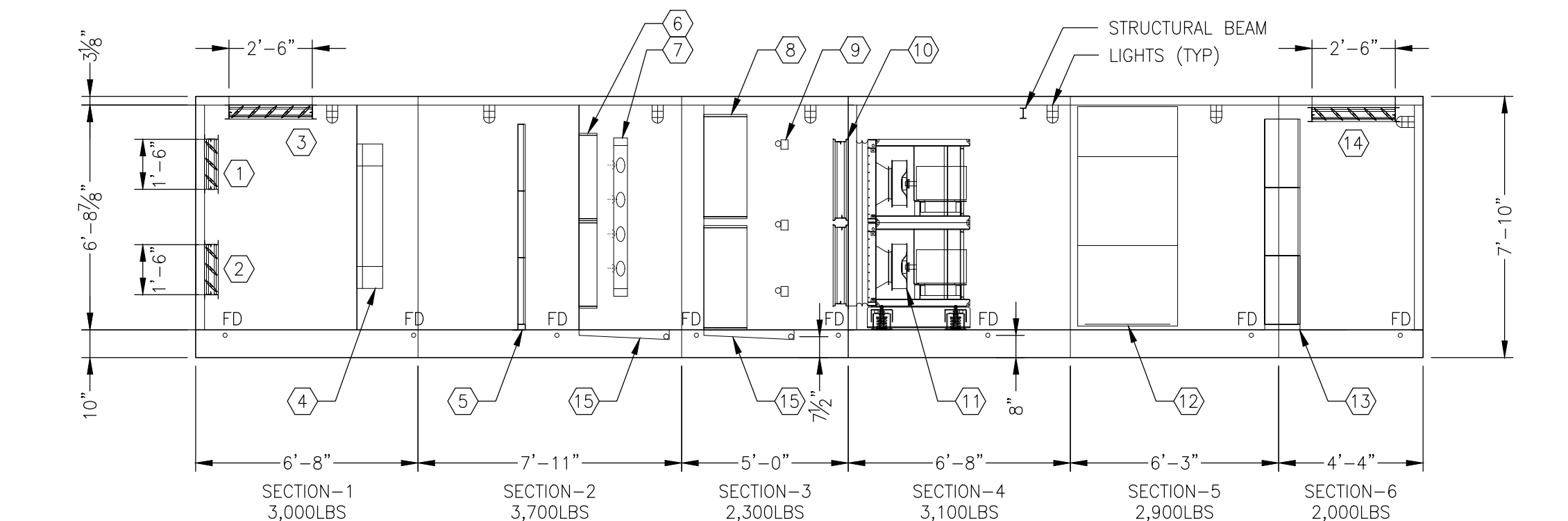


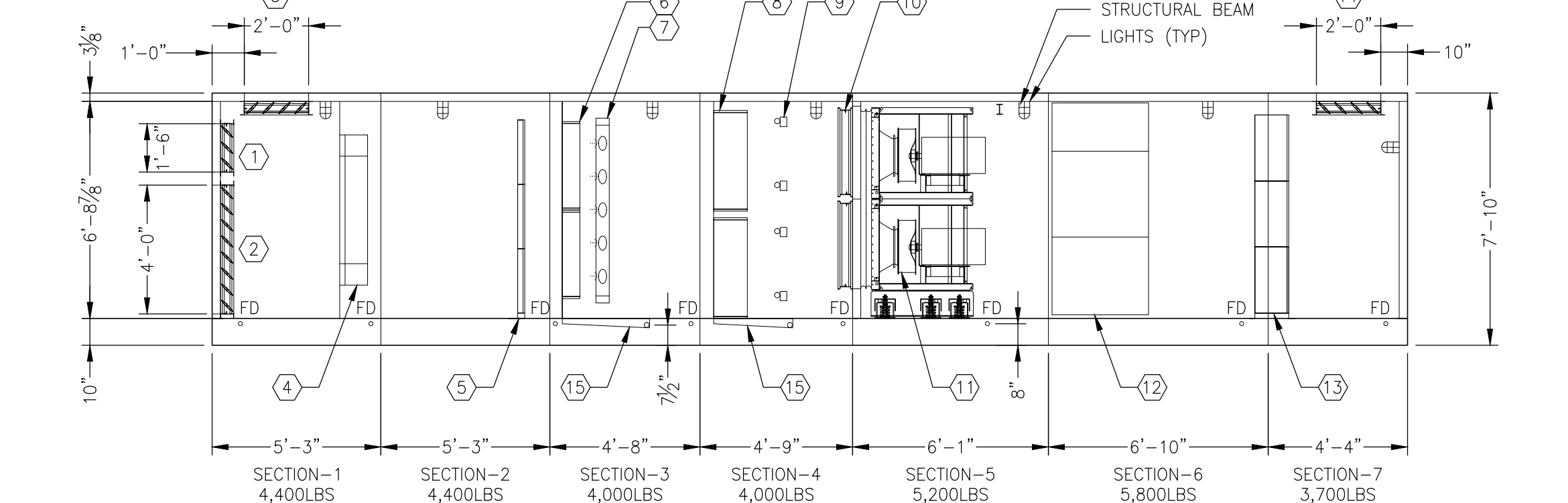
AHU-069 PLAN  
SCALE: 1/4"=1'-0"



AHU-067 PLAN  
SCALE: 1/4"=1'-0"



AHU-069 SECTION  
SCALE: 1/4"=1'-0"



AHU-067 SECTION  
SCALE: 1/4"=1'-0"

AHU-069 & 067 COMPONENTS:  
(LAYOUT BASED ON TRANE CUSTOM)

- ① MIN. OUTDOOR AIR DAMPER WITH OUTDOOR AIR FLOWSTATION
- ② MAX. OUTDOOR AIR DAMPER
- ③ RETURN AIR DAMPER
- ④ AIR BLENDER SECTION
- ⑤ FILTER SECTION - 2" MERV-8 PREFILTER
- ⑥ HEATING COIL SECTION
- ⑦ HUMIDIFIER SECTION
- ⑧ COOLING COIL SECTION
- ⑨ UV LIGHTS
- ⑩ BACKDRAFT DAMPERS
- ⑪ SUPPLY FAN ARRAY SECTION
- ⑫ SOUND ATTENUATOR SECTION
- ⑬ FILTER SECTION - 12" MERV-16 (AHU-069)  
12" HEPA FILTER (AHU-067)
- ⑭ SUPPLY AIR SMOKE DAMPER
- ⑮ CONDENSATE DRAIN PAN

GENERAL NOTES:

- 1. SHIPPING SPLITS SHOWN ARE REQUIRED FOR RIGGING OF UNITS INTO MECHANICAL ROOM. MANUFACTURER TO COORDINATE WITH CONTRACTOR FOR FINAL SHIPPING SPLIT CONFIGURATION.

COOLING COIL SCHEDULE

| COIL No. | TOTAL CAPACITY (MBH) | SENSIBLE CAPACITY (MBH) | PERFORMANCE DATA |                |               |          |          |          |          |     |                           |          | CONSTRUCTION DATA |                |                        |                              |           |               | FACE VELOCITY (FPM) | DRY WEIGHT EACH COIL (LBS) | TOTAL COIL SYSTEM OPERATING WT. (LBS) | MANUF. MODEL # | REMARKS |                 |                 |            |
|----------|----------------------|-------------------------|------------------|----------------|---------------|----------|----------|----------|----------|-----|---------------------------|----------|-------------------|----------------|------------------------|------------------------------|-----------|---------------|---------------------|----------------------------|---------------------------------------|----------------|---------|-----------------|-----------------|------------|
|          |                      |                         | CFM              | MIN O.A. (CFM) | SP (IN. W.G.) | EDB (°F) | EWB (°F) | LDB (°F) | LWB (°F) | GPM | PD (FT. H <sub>2</sub> O) | EWI (°F) | LWT (°F)          | VELOCITY (FPS) | NOM. TUBE LENGTH (IN.) | FACE AREA EA. COIL (SQ. FT.) | ROWS DEEP | FINS PER INCH |                     |                            |                                       |                |         | No. OF SECTIONS | ARRANGEMENT     | COILS HIGH |
| CC-069   | 998                  | 660                     | 19,350           | 10,650         | 1.0           | 81.1     | 67.2     | 49.9     | 49.8     | 165 | 12.5                      | 45.0     | 57.0              | 4.0            | 93                     | 44.6                         | 8         | 13            | 2                   | 2                          | 1                                     | 434            | 707     | 1837            | LUVATA 5WS1308B | 1, 2       |
| CC-067   | 1662                 | 1198                    | 40,000           | 10,000         | 0.95          | 77.8     | 64.6     | 49.8     | 49.7     | 281 | 19.4                      | 45.0     | 57.0              | 4.65           | 93                     | 89.1                         | 8         | 12            | 4                   | 2                          | 2                                     | 449            | 682     | 2728            | LUVATA 5WL1208B | 1, 2       |

- NOTES:  
1. S.S. CASING.  
2. PROVIDE COOLING COILS WITH BOTTOM DRAIN TO ALLOW FULL DRAINING OF COILS.

HEATING COIL SCHEDULE (HOT WATER)

| COIL No. | CFM    | SENSIBLE MBH | EDB (°F) | LDB (°F) | AIR P.D. (IN. W.G.) | PERFORMANCE DATA |          |                 |          |          | CONSTRUCTION DATA |                                |           |                       |                 | FACE VELOCITY (FPM) | DRY WEIGHT EACH COIL (LBS) | TOTAL COIL SYSTEM OPERATING WT. (LBS) | MANUF. MODEL # | REMARKS |                 |            |
|----------|--------|--------------|----------|----------|---------------------|------------------|----------|-----------------|----------|----------|-------------------|--------------------------------|-----------|-----------------------|-----------------|---------------------|----------------------------|---------------------------------------|----------------|---------|-----------------|------------|
|          |        |              |          |          |                     | TOTAL CFM        | PD (FT.) | TUBE VELL.(FPS) | EWI (°F) | LWT (°F) | TUBE LENGTH (IN.) | TOTAL COIL FACE AREA (SQ. FT.) | ROWS DEEP | MAX. No. OF FINS/INCH | No. OF SECTIONS |                     |                            |                                       |                |         | ARRANGEMENT     | COILS HIGH |
| HC-069   | 26,000 | 646          | 26.0     | 57.0     | 0.1                 | 62               | 3.9      | 3.8             | 180      | 159      | 93                | 38.8                           | 1         | 6                     | 2               | 2                   | 1                          | 500                                   | 113            | 774     | LUVATA 5MH0601B |            |
| HC-067   | 40,000 | 563          | 50.0     | 63.0     | 0.03                | 22               | 0.75     | 1.33            | 180      | 128      | 93                | 77.5                           | 1         | 4                     | 4               | 2                   | 2                          | 516                                   | 108            | 528     | LUVATA 5MG0401A |            |

FAN SCHEDULE

| UNIT No. | SERVICE | FAN TYPE | FAN QUANTITY | PERFORMANCE DATA |                     |                   |      |          | CONSTRUCTION DATA |       | MOTOR DATA |          |            | VIBRATION ISOLATION |       |       |        | MANUF. MODEL # | REMARKS |                |                                      |
|----------|---------|----------|--------------|------------------|---------------------|-------------------|------|----------|-------------------|-------|------------|----------|------------|---------------------|-------|-------|--------|----------------|---------|----------------|--------------------------------------|
|          |         |          |              | CFM EACH         | TOTAL SP (IN. W.G.) | EXT SP (IN. W.G.) | RPM  | BHP EACH | MAX. OV (FPM)     | CLASS | ARRANG.    | MHP EACH | DRIVE TYPE | STARTER TYPE        | VOLTS | PHASE | HZ     |                |         | SPECIFICATIONS | MIN. STATIC DEFLECTION (IN.)         |
| SF-069   | SUPPLY  | PLENUM   | 4            | 4,838            | 9.8                 | 6.25              | 3546 | 11.9     | III               | 4     | 15         | DIRECT   | VFD        | 480                 | 3     | 60    | SPRING | BASE TYPE      | 2       | TRANE SDDP1EST | FAN ARRAY W/PIEZOMETER AIRFLOW RINGS |
| SF-067   | SUPPLY  | PLENUM   | 6            | 6,667            | 10.5                | 7.0               | 2476 | 16.2     | III               | 4     | 20         | DIRECT   | VFD        | 480                 | 3     | 60    | SPRING | BASE TYPE      | 2       | TRANE SDDP25SN | FAN ARRAY W/PIEZOMETER AIRFLOW RINGS |

SOUND ATTENUATOR SCHEDULE

| UNIT No. | LOCATION | SERVICE | CFM    | UNIT SIZE (WxH) | LENGTH | FACE VELOCITY | MINIMUM REQUIRED ATTENUATION, DB |     |     |     |    |    |    |    | MAX. PRESSURE DROP (IN. W.G.) | MANUF. MODEL # | REMARKS |
|----------|----------|---------|--------|-----------------|--------|---------------|----------------------------------|-----|-----|-----|----|----|----|----|-------------------------------|----------------|---------|
|          |          |         |        |                 |        |               | 63                               | 125 | 250 | 500 | 1K | 2K | 4K | 8K |                               |                |         |
| SAU-069  | SUPPLY   | AHU-065 | 19,350 | 105x81          | 3'-0"  | 328           | 10                               | 10  | 13  | 18  | 26 | 34 | 27 | 11 | 0.06                          | VAW RSL        | 1       |
| SAU-067  | SUPPLY   | AHU-066 | 40,000 | 198x81          | 3'-0"  | 359           | 10                               | 10  | 13  | 18  | 26 | 34 | 27 | 11 | 0.08                          | VAW RSL        | 1       |

- NOTES:  
1. TEDLAR LINED.

STEAM HUMIDIFIER SCHEDULE

| UNIT No. | CFM    | MINIMUM O.A. CFM | No. OF MANIFOLDS | FLOW (LBS/HR) | STEAM PRESSURE (PSIG) | VELOCITY (FPM) | AIR DATA          |          |          |          |          | MANUF. MODEL #          | REMARKS |
|----------|--------|------------------|------------------|---------------|-----------------------|----------------|-------------------|----------|----------|----------|----------|-------------------------|---------|
|          |        |                  |                  |               |                       |                | AIR P.D. (IN. WC) | EDB (°F) | EWB (°F) | LDB (°F) | LWB (°F) |                         |         |
| H-069    | 19,350 | 10,650           | 1                | 479           | 5                     | 585            | 47.3              | 34       | 50.0     | 47       | 80       | DRI-STEEM ULTRA-SORB XV | 1, 2    |
| H-067    | 40,000 | 10,000           | 1                | 977           | 5                     | 857            | 47.5              | 34       | 50.0     | 47       | 80       | DRI-STEEM ULTRA-SORB XV | 1, 2    |

- NOTES:  
1. SIZED FOR AIRSIDE ECONOMIZER.  
2. FLOW INCLUDES LOSSES.

AIR FILTER SCHEDULE

| DESIGNATION | LOCATION | SERVICE    | FILTER TYPE | CFM    | FACE VELOCITY | PRESSURE DROP (IN. W.C.) |       | No. OF CELLS | COIL DIMENSIONS |       |       | REMARKS |
|-------------|----------|------------|-------------|--------|---------------|--------------------------|-------|--------------|-----------------|-------|-------|---------|
|             |          |            |             |        |               | INITIAL                  | FINAL |              | HIGH            | WIDTH | DEPTH |         |
| PF-069      | RETURN   | MIXED AIR  | MERV-8      | 19,350 | 403           | 0.2                      | 0.7   | 12           | 3               | 4     | 2     | FARR    |
| FF-069      | SUPPLY   | SUPPLY AIR | MERV-16     | 19,350 | 403           | 0.52                     | 1.5   | 12           | 3               | 4     | 12    | FARR    |
| PF-067      | RETURN   | MIXED AIR  | MERV-8      | 40,000 | 476           | 0.25                     | 0.7   | 21           | 3               | 7     | 2     | FARR    |
| FF-067      | SUPPLY   | SUPPLY AIR | HEPA        | 40,000 | 476           | 0.65                     | 1.5   | 21           | 3               | 7     | 12    | FARR    |

VARIABLE FREQUENCY DRIVE SCHEDULE

| UNIT No. | LOCATION | SERVICE    | ELECTRICAL DATA |       |    | MOTOR (HP) | RATED FULL LOAD AMPS | MOUNTING TYPE (WALL OR FLOOR) | INTEGRAL DISCONNECT SWITCH | BYPASS TYPE | HARMONIC FILTER |                 | ENCLOSURE (NEMA TYPE) | BMS GATEWAY REQUIRED/ BMS SYSTEM MANUFACTURER | VFD MOUNTED BY MANUF. AS PART OF EQUIPMENT | MANUF. MODEL #    | REMARKS |
|----------|----------|------------|-----------------|-------|----|------------|----------------------|-------------------------------|----------------------------|-------------|-----------------|-----------------|-----------------------|---|--|-------------------|---------|
|          |          |            | VOLTS           | PHASE | HZ |            |                      |                               |                            |             | 5% LINE REACTOR | 2.5% D.C. CHOKE |                       |   |  |                   |         |
| VFD-069A | AHU-069  | SUPPLY FAN | 460             | 3     | 60 | 15         | 21                   | WALL                          | YES                        | YES         | YES             | NO              | NEMA 1                | YES   | YES  | TOSHIBA H9 SERIES |         |
| VFD-069B | AHU-069  | SUPPLY FAN | 460             | 3     | 60 | 15         | 21                   | WALL                          | YES                        | YES         | YES             | NO              | NEMA 1                | YES   | YES  | TOSHIBA H9 SERIES |         |
| VFD-069C | AHU-069  | SUPPLY FAN | 460             | 3     | 60 | 15         | 21                   | WALL                          | YES                        | YES         | YES             | NO              | NEMA 1                | YES   | YES  | TOSHIBA H9 SERIES |         |
| VFD-069D | AHU-069  | SUPPLY FAN | 460             | 3     | 60 | 15         | 21                   | WALL                          | YES                        | YES         | YES             | NO              | NEMA 1                | YES   | YES  | TOSHIBA H9 SERIES |         |
| VFD-067A | AHU-067  | SUPPLY FAN | 460             | 3     | 60 | 20         | 27                   | WALL                          | YES                        | YES         | YES             | NO              | NEMA 1                | YES   | YES  | TOSHIBA H9 SERIES |         |
| VFD-067B | AHU-067  | SUPPLY FAN | 460             | 3     | 60 | 20         | 27                   | WALL                          | YES                        | YES         | YES             | NO              | NEMA 1                | YES   | YES  | TOSHIBA H9 SERIES |         |
| VFD-067C | AHU-067  | SUPPLY FAN | 460             | 3     | 60 | 20         | 27                   | WALL                          | YES                        | YES         | YES             | NO              | NEMA 1                | YES   | YES  | TOSHIBA H9 SERIES |         |
| VFD-067D | AHU-067  | SUPPLY FAN | 460             | 3     | 60 | 20         | 27                   | WALL                          | YES                        | YES         | YES             | NO              | NEMA 1                | YES   | YES  | TOSHIBA H9 SERIES |         |
| VFD-067E | AHU-067  | SUPPLY FAN | 460             | 3     | 60 | 20         | 27                   | WALL                          | YES                        | YES         | YES             | NO              | NEMA 1                | YES   | YES  | TOSHIBA H9 SERIES |         |
| VFD-067F | AHU-067  | SUPPLY FAN | 460             | 3     | 60 | 20         | 27                   | WALL                          | YES                        | YES         | YES             | NO              | NEMA 1                | YES   | YES  | TOSHIBA H9 SERIES |         |

- NOTE:  
1. SEE SPECIFICATION FOR ADDITIONAL INFORMATION.

SAVE DATE: 2/27/2015 1:51 PM PLOT DATE: 2/27/2015 2:41 PM LOGIN: Ushain, Antonia P:\Projects\B1400008\140263-000\Drawings\Mech\B140263-000\_M-500\_AHU SCHEDULES.dwg

|  |             |                                   |
|--|-------------|-----------------------------------|
| No.  | Date        | Description                       |
| REVISION   |             |                                   |
|  | 02/27/2015  | CONSTRUCTION DOCUMENTS            |
|  | 01/14/2015  | PRE-PURCHASE AHU - ISSUED FOR BID |
|  | 01/06/2015  | PRE-PURCHASE AHU - OWNER REVIEW   |
|  | 12/01/2014  | DESIGN DEVELOPMENT                |
| No.  | Date        | Description                       |
| ISSUE  |             |                                   |
| PROJECT  |             |                                   |
| Maine Medical Center<br>Bean Building<br>AHU Replacement |             |                                   |
| DRAWING TITLE  |             |                                   |
| MECHANICAL<br>AHU SCHEDULES                              |             |                                   |
| Drawn By   | DAC         | Drawing No.                       |
| Checked By   | DPR         |                                   |
| Date   | 12/01/2014  | M-501                             |
| Scale  | 1/4"=1'-0"  |                                   |
| Project No.  | B140263-000 |                                   |