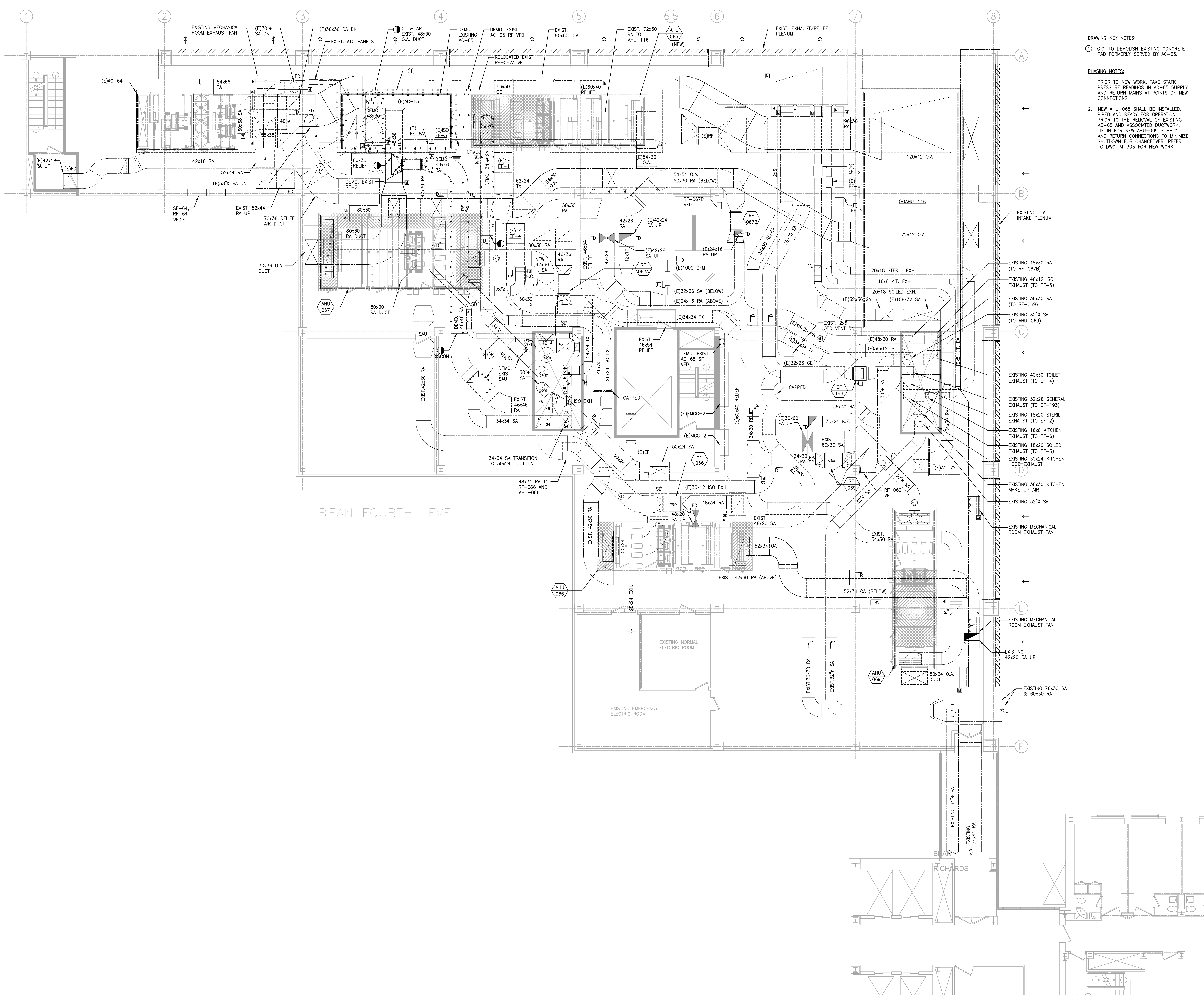


- DRAWING KEY NOTES:**
- G.C. TO DEMOLISH EXISTING CONCRETE PAD FORMERLY SERVED BY AC-65.
- PHASING NOTES:**
- PRIOR TO NEW WORK, TAKE STATIC PRESSURE READINGS IN AC-65 SUPPLY AND RETURN MAINS AT POINTS OF NEW CONNECTIONS.
 - NEW AHU-065 SHALL BE INSTALLED, PIPED AND READY FOR OPERATION PRIOR TO THE REMOVAL OF EXISTING AC-65 AND ASSOCIATED DUCTWORK. TIE IN FOR NEW AHU-069 SUPPLY AND RETURN CONNECTIONS TO MINIMIZE SHUTDOWN FOR CHANGEOVER. REFER TO DWG. M-303 FOR NEW WORK.



BEAN FOURTH LEVEL

No.	Date	Description
REVISION		
	02/27/2015	CONSTRUCTION DOCUMENTS
	01/26/2015	FOR OWNER REVIEW
	12/01/2014	DESIGN DEVELOPMENT
No.	Date	Description
ISSUE		

PROJECT
**Maine Medical Center
Bean Building
AHU Replacement**

DRAWING TITLE
**MECHANICAL
PENTHOUSE DUCTWORK
AC-65 DEMOLITION
PLAN - PHASE 4**

Drawn By	TU	Drawing No.	M-103
Checked By	DPR		
Date	12/01/2014		
Scale	1/8"=1'-0"		
Project No.	8140263-000		