



**ISSUED FOR PERMIT**

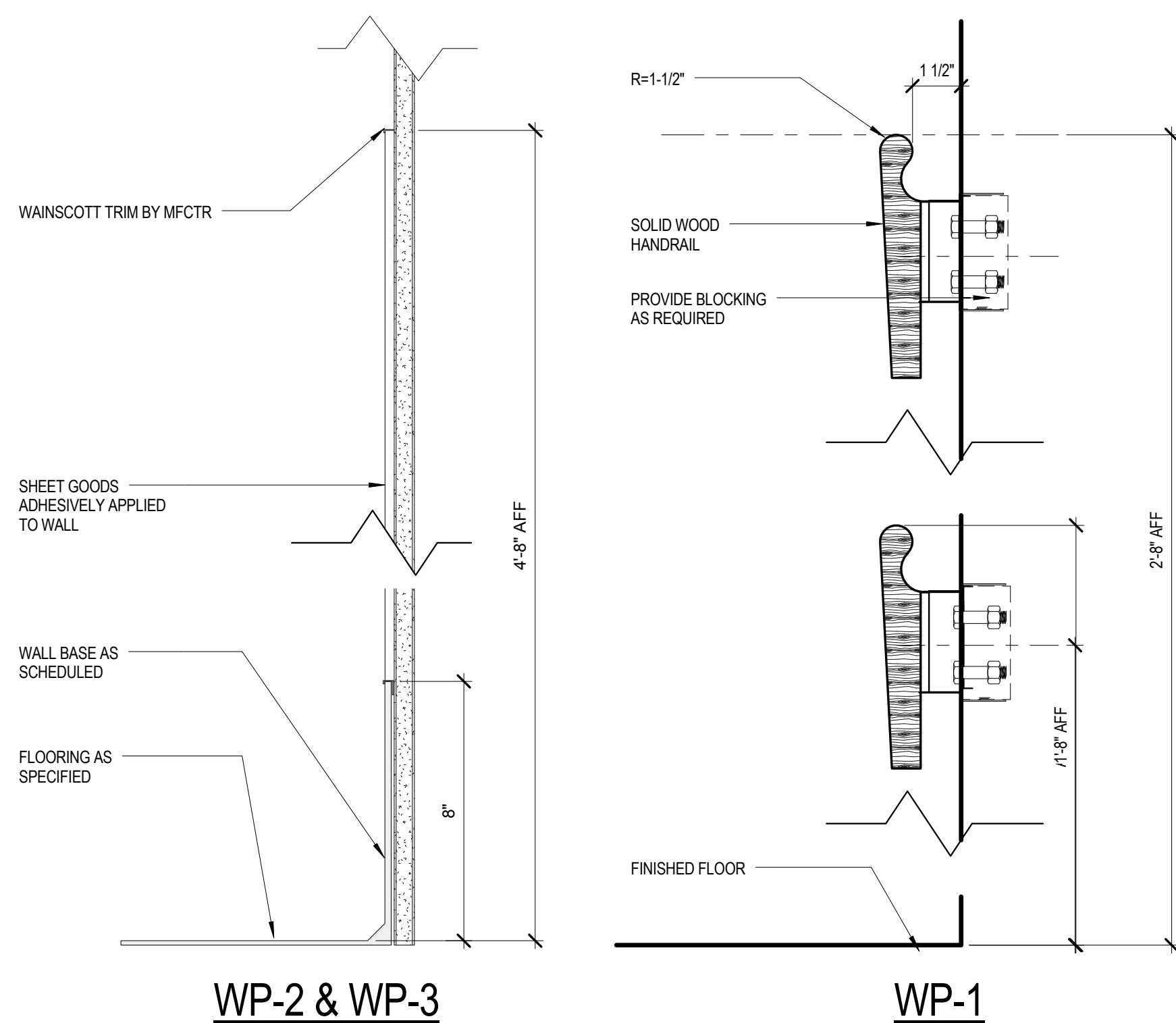
September 15, 2016



INDEX OF DRAWINGS	
SHEET NUMBER	SHEET NAME
01-General	
G00-00	COVER SHEET
04-Architectural	
A00-01	ARCHITECTURAL ABBREVIATIONS, SYMBOLS & NOTES
A00-10	TYPICAL MOUNTING HEIGHTS
A00-70	ROOM FINISH LEGEND AND SCHEDULE
A01-06	LIFE SAFETY PLAN LEVEL 6
A02-06	LEVEL 06 OVERALL PLAN
A03-06	LEVEL 06 DEMOLITION PLAN
A10-01	PATIENT ROOM ENLARGED PLAN, RCP, ELEVATIONS
A10-20	ARCHITECTURAL DETAILS
A11-50	ROOF PENETRATION AND SUPPORT DETAILS



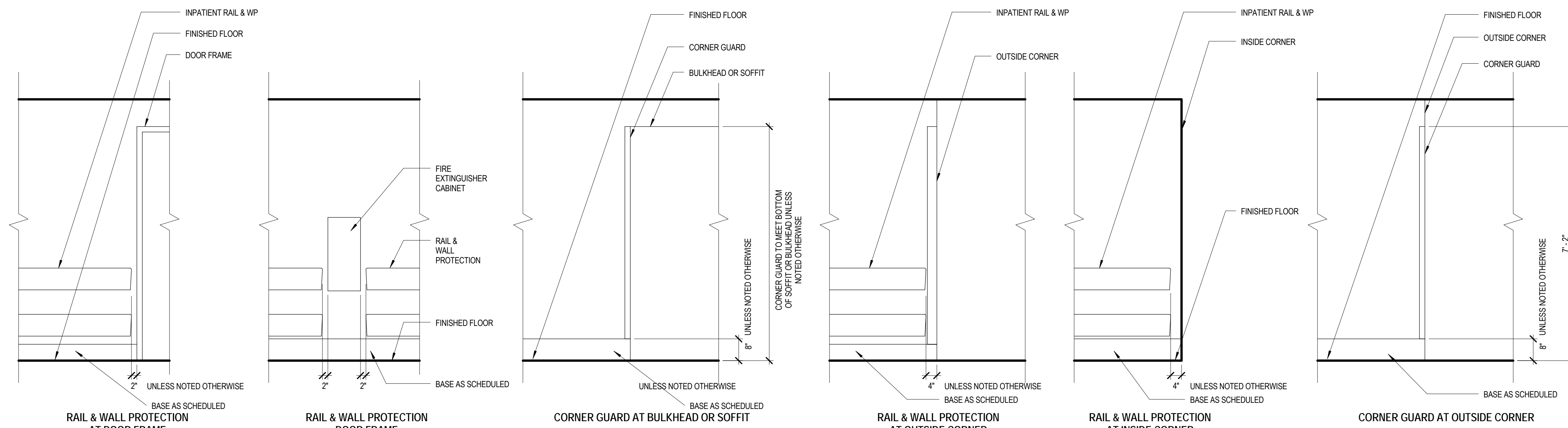




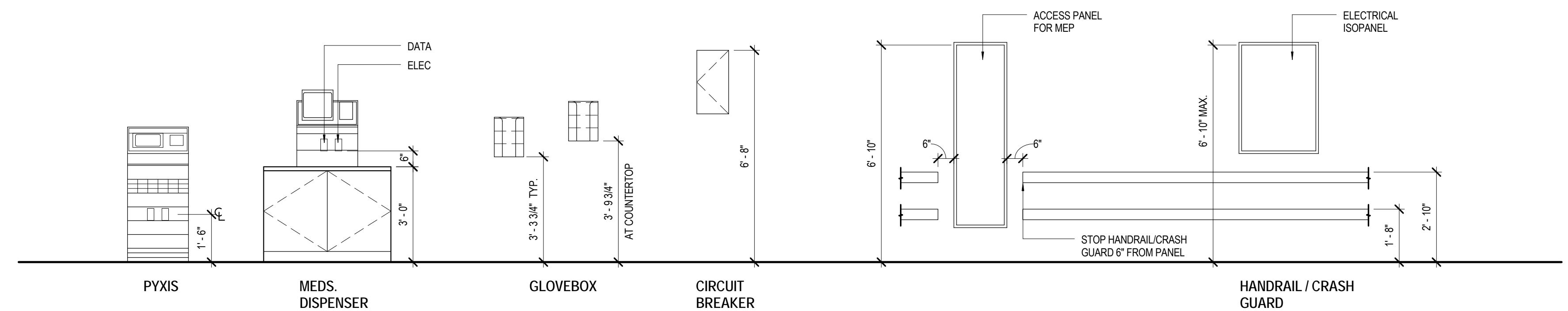
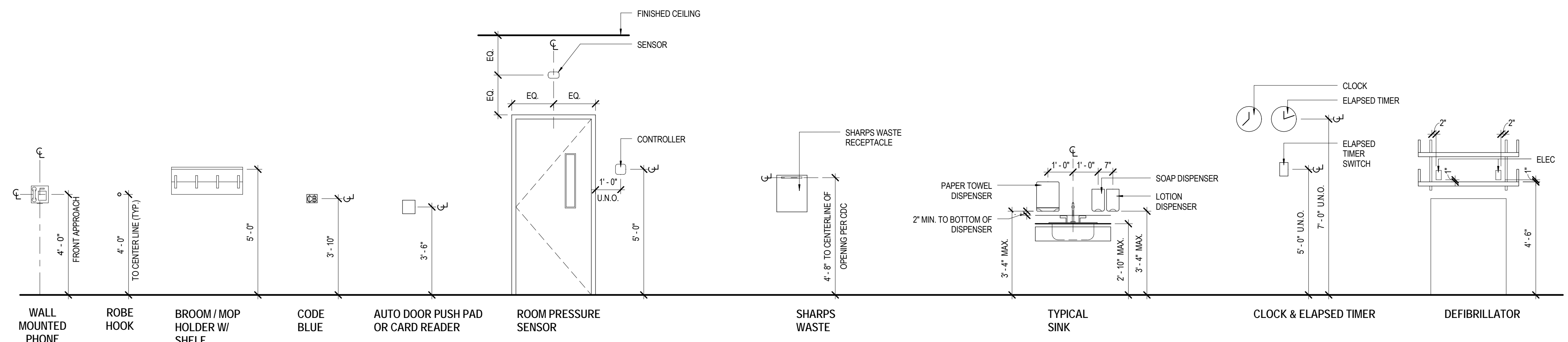
WP-2 & WP-3

WP-1

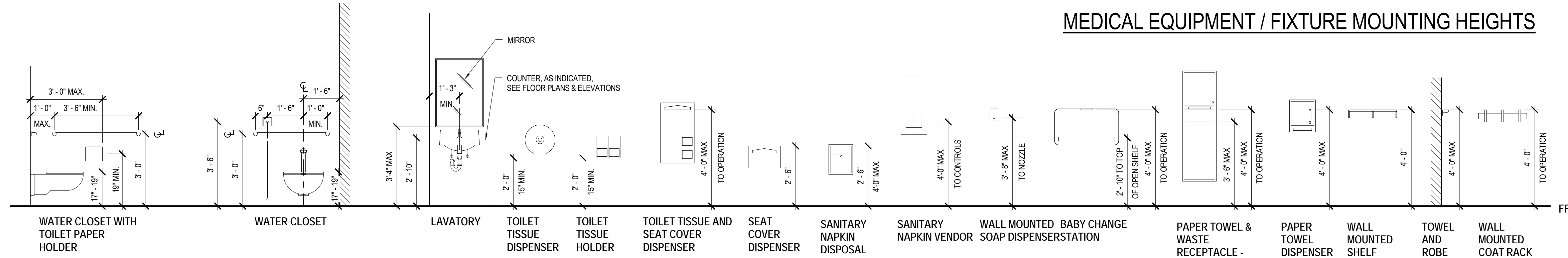
D5 WALL PROTECTION  
3" = 1'-0"



CORNER GUARDS AND WALL PROTECTION

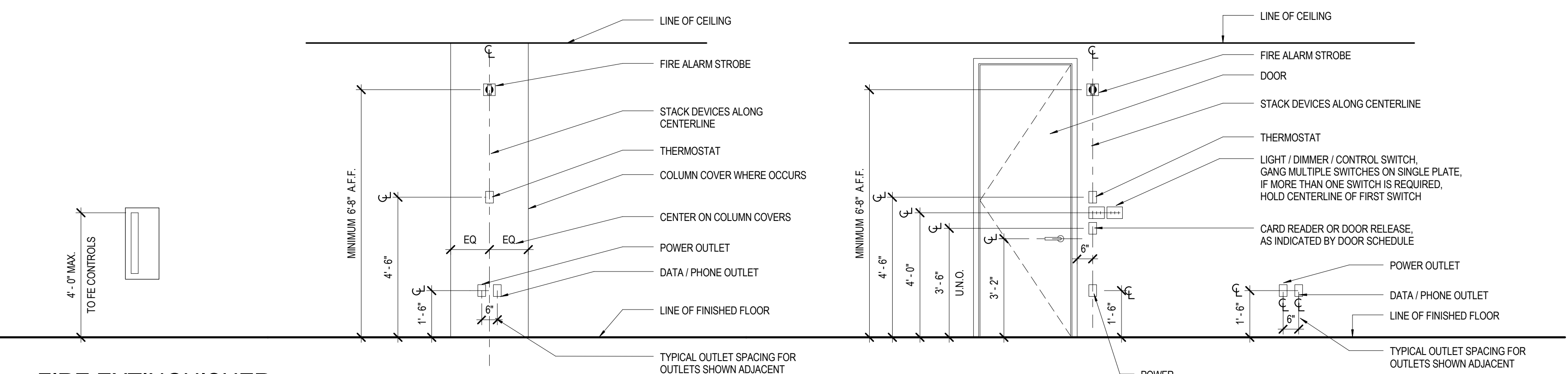


MEDICAL EQUIPMENT / FIXTURE MOUNTING HEIGHTS



SHOWER / RESTROOM FIXTURE MOUNTING HEIGHT

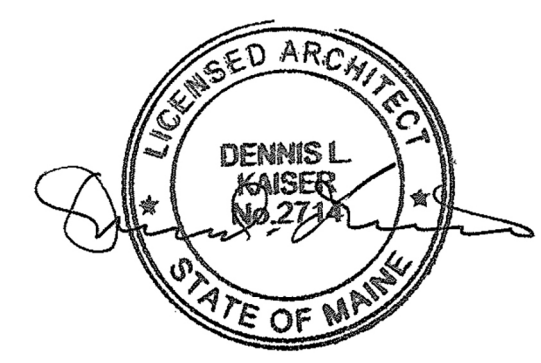
STACK ALL ADJACENT DEVICES AS INDICATED ON ALL TRADE DRAWINGS ALONG CENTERLINE, TYP. FOR ALL DEVICES.  
NOTIFY ARCHITECT OF DISCREPANCIES BETWEEN TYPICAL MOUNTING HEIGHTS AND PROJECT ELEVATIONS.



FIRE EXTINGUISHER  
CABINET AND FIRE  
HOSE CABINET

ELEVATION @ TYPICAL COLUMN

ELEVATION @ TYPICAL DOOR



Revisions

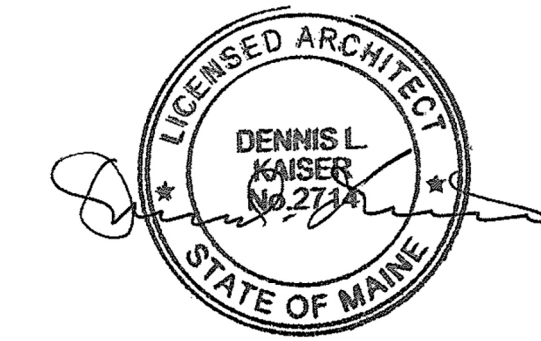
ISSUED FOR PERMIT NO.	09.15.16
ISSUE DATE	09.15.16
<b>Sheet Information</b>	
Date	September 15, 2016
Job Number	1521XX.XXX
Drawn	Author
Checked	sc
Approved	Approver

TYPICAL  
MOUNTING  
HEIGHTS

Sheet  
A00-10

FINISH SCHEDULE								
ROOM NUMBER	ROOM NAME	FLOOR FINISH	BASE MATL	WALL FINISH	MILLWORK	WINDOW TREATMENT	CEILING FINISH	COMMENTS
640	PATIENT ROOM			ltd				
640A	TOILET			ltd				
641	PATIENT ROOM			ltd				
641A	TOILET			ltd				

Finish Legend								
Section	Item Code	Product	Manufacturer	Style	Color	Size	Comments	
05 50 00	MB-1	METAL BASE	MILLWORK	8" SATIN STAINLESS STEEL				
06 40 43	PL-1	PLASTIC LAMINATE	FORMICA	COLOR CORE	NEW WHITE 7223-58			
06 40 43	PL-2	PLASTIC LAMINATE	FORMICA		FOLKSTONE 927-58			
06 40 43	PL-3	PLASTIC LAMINATE	WILSONART		MANITOBA MAPLE 7911-60			
06 40 43	PL-4	PLASTIC LAMINATE	FORMICA		FOG 961-58		PATIENT ROOM BATHROOM DOORS	
06 40 43	SS-1	SOLID SURFACE	CORIAN		GLACIER WHITE			
06 40 43	SS-2	SOLID SURFACE	CORIAN		SILVER GRAY			
06 40 43	SS-3	SOLID SURFACE	CORIAN		SANDALWOOD			
08 80 00	GL-1	1/2" LAMINATED CLEAR GLASS						
08 80 00	GL-2	1/4" DUAL SIDED MAGNETIC BACK PAINTED GLASS	SKYLINE	VITRA COLOR MARKERGLASS	TO MATCH PT-5			
08 80 00	GL-3	1/4" MAGNETIC BACK PAINTED GLASS	SKYLINE	VITRA COLOR MAGNETIC MARKERGLASS	TO MATCH PT-1			
08 80 00	GL-4	1/4" BACK PAINTED GLASS	SKYLINE	VITRA COLOR MARKERGLASS	TO MATCH PT-6			
08 80 00	GL-5	1/2" LAMINATED CLEAR GLASS W/COLORED FILM	3M	FASARA	LINEN SH2FGLN			
09 30 00	TPB-1	PORCELAIN BASE TILE	DALTILE	ELEVARE BULLNOSE S-44D9	LUNAR EL40	4" x 16"	GROUT TO BE LATICRETE SPECTRALOCK 60 DARK GREY	
09 30 00	TPF-1	PORCELAIN FLOOR TILE	DALTILE	KEYSTONES	SUEDE GRAY D182	1" x 2"	GROUT TO BE LATICRETE SPECTRALOCK 60 DARK GREY	
09 30 00	TPW-1	PORCELAIN WALL TILE	DALTILE	ELEVARE	LUNAR EL40	4" x 16"	INCLUDE 12" JOLLY, GROUT TO BE LATICRETE SPECTRALOCK 60 DARK GREY	
09 51 13	ACP-1	ACOUSTICAL CEILING TILE	ARMSTRONG	CLEAN ROOM VL 868	WHITE; PRELUDE 15/16" EXPOSED T' GRID	24" x 24"	GASKET & HOLD DOWN CLIPS	
09 51 13	ACP-2	ACOUSTICAL CEILING TILE	ARMSTRONG	DUNE 1775	WHITE; INTERLUDE XL HRC 9/16" EXPOSED T' GRID	24" x 24"	EDGE PROFILE, BEVELED TEGULAR	
09 51 13	ACP-3	ACOUSTICAL CEILING TILE	ARMSTRONG	DUNE 1777	WHITE; INTERLUDE XL HRC 9/16" EXPOSED T' GRID	24" x 48"	EDGE PROFILE, BEVELED TEGULAR	
09 65 13	IGB-1	INTEGRAL RUBBER BASE	NORA	SENTICA	6525 OCEAN MIST	6"	WELDED SEAMS, ISOLATION ROOMS/TREATMENT, TO MATCH ADJACENT FLOORING	
09 65 13	IGB-2	INTEGRAL RUBBER BASE	NORA	SENTICA	6526 MOUNTAIN AIR	6"	WELDED SEAMS, ISOLATION ROOMS/TREATMENT, TO MATCH ADJACENT FLOORING	
09 65 13	RB-1	RUBBER COVE BASE	JOHNSONITE	ECOLIBRIUM RUBBER COVE BASE	EB-20 CHARCOAL WG	6"		
09 65 19	RF-1	RESILIENT FLOORING	NORA	SENTICA	6525 OCEAN MIST	3MM, SHEET GOODS		
09 65 19	RF-2	RESILIENT FLOORING	NORA	SENTICA	6526 MOUNTAIN AIR	3MM, SHEET GOODS		
09 65 19	RF-3	RESILIENT FLOORING	NORA	SENTICA	6527 DEEP SEA	3MM, SHEET GOODS		
09 65 19	RF-4	RESILIENT FLOORING	NORA	SENTICA	6525 OCEAN MIST	3MM, SHEET GOODS	WELDED SEAMS, ISOLATION/TREATMENT ROOMS	
09 65 19	RF-5	RESILIENT FLOORING	NORA	SENTICA	6526 MOUNTAIN AIR	3MM, SHEET GOODS	WELDED SEAMS, ISOLATION/TREATMENT ROOMS	
09 68 13	CPT-1	CARPET TILE	BENTLEY	ARCADE LEGEND 8ALT4	CYBER INVADER	24" x 24"		
09 72 00	WC-1	WALLCOVERING	CARNEGIE - XOREL	STRIE 6423	809			
09 72 00	WC-2	WALLCOVERING	CARNEGIE - XOREL	METEOR 6427	750			
09 91 23	PT-1	PAINT	SHERWIN WILLIAMS	PRO GREEN 200 LATEX - EGG SHELL*	TO MATCH BENJAMIN MOORE SUPER WHITE		*FLAT FINISH ON CEILINGS	
09 91 23	PT-2	PAINT	SHERWIN WILLIAMS	PRO GREEN 200 LATEX - EGG SHELL	TO MATCH BENJAMIN MOORE SILVER HALF DOLLAR 2121-40			
09 91 23	PT-3	PAINT	SHERWIN WILLIAMS	PRO GREEN 200 LATEX - EGG SHELL	TO MATCH BENJAMIN MOORE PEWTER 2121-30			
09 91 23	PT-4	PAINT	SHERWIN WILLIAMS	PRO GREEN 200 LATEX - EGG SHELL	SW 6983 FULLY PURPLE			
09 91 23	PT-5	PAINT	SHERWIN WILLIAMS	PRO GREEN 200 LATEX - EGG SHELL	TO MATCH BENJAMIN MOORE ROSEMARY GREEN 2029-30			
09 91 23	PT-6	PAINT	SHERWIN WILLIAMS	PRO GREEN 200 LATEX - EGG SHELL	TO MATCH BENJAMIN MOORE YOSEMITE BLUE 2059-40			
10 21 23	CC-1	CUBICLE CURTAIN	STANDARD TEXTILE	MATRIX	VAPOR CM768317			
10 26 00	CG-1	CORNER GUARD	INPRO CORP.	SURFACE MOUNT STAINLESS STEEL CORNER GUARD	STAINLESS STEEL	CUSTOM HEIGHT 6"-8"		
10 26 00	CG-2	CORNER GUARD	INPRO CORP.	SURFACE MOUNT STAINLESS STEEL WALL PROTECTOR	STAINLESS STEEL	CUSTOM HEIGHT 6"-8"		
10 26 00	WP-1	HAND RAIL + BUMMBER RAIL	INPRO CORP.	HR8 NORTHERN HARDWOODS REAL WOOD HANDRAIL	NATURAL MAPLE	5 1/2" H		
10 26 00	WP-2	WALL PROTECTION	INPRO CORP.	G2 BIOBLEND RIGID SHEET WALL PROTECTION	FEATHER 0238	4' x 8' SHEETS	INCLUDE ALL TRIM PIECES	
10 26 00	WP-3	WALL PROTECTION	INPRO CORP.	G2 BIOBLEND RIGID SHEET WALL PROTECTION	DOVE GRAY 0106	4' x 8' SHEETS	INCLUDE ALL TRIM PIECES	
12 24 13	WT-1	WINDOW TREATMENT	MECHOSHADE	DUAL 5/DOUBLE SHADES (MANUAL) - ECOVEL	1363 GREY	5% OPEN	ALIGN PANELS WITH MULLION	
12 24 13	WT-2	WINDOW TREATMENT	MECHOSHADE	DUAL 5/DOUBLE SHADES (MANUAL) - EQUINOX BLACKOUT	0106 DUSK		ALIGN PANELS WITH MULLION	



Revisions

ISSUED FOR PERMIT NO.	09 15 16
ISSUE DATE	09 15 16
<b>Sheet Information</b>	
Date	September 15, 2016
Job Number	1521XXX
Drawn	Author
Checked	sc
Approved	Approver
<b>Title</b>	

**ROOM FINISH  
LEGEND AND  
SCHEDULE**

Sheet  
**A00-70**



**CODE COMPLIANCE PLAN  
LEGEND**

- SMOKE BARRIER WITH TWO HOUR MIN. FIRE RATED CONSTRUCTION
- SMOKE BARRIER WITH ONE HOUR MIN. FIRE RATED CONSTRUCTION
- LIMIT TRANSFER OF SMOKE (NO FIRE-RESISTANT RATING)
- TWO HOUR FIRE BARRIER
- ONE HOUR FIRE BARRIER
- TRAVEL DISTANCE - LONGEST TO AN EXIT
- FIRE EXTINGUISHER & CABINET MAX TRAVEL DISTANCE: 75' - PER TABLE 906.3(1)
- FEC FIRE EXTINGUISHER & CABINET
- EXTENT OF SUITE
- OUT OF SCOPE
- EXIT EXIT / STAIR
- 200' EGRESS PATH AND TRAVEL DISTANCE
- MHO MAGNETIC HOLD OPEN
- EXIT LOCATION - OCCUPANT LOAD AND WIDTH (IN INCHES)
- WIDTH REQUIRED | ACTUAL POPULATION
- WIDTH PROVIDED | ALLOWED POPULATION
- EXIT LIGHT WITH ARROW DIR.
- EXIT EXIT STAIR
- R DOOR RESISTS THE PASSAGE OF SMOKE

**OCCUPANT LOAD  
CALCULATIONS FOR LEVEL 6**

OCCUPANCY	SQ. FTG.	CODE	OCC. LOAD FACTOR	OCC. LOAD	REQ. EXIT WIDTH/OCC.	TOTAL REQ. EXIT WIDTH	TOTAL WIDTH PROVIDED
HEALTH CARE	565	IBC	100 SFI/OCC	6	0.15	0.3'	34'
HEALTH CARE	565			6		0.3'	34'

**GENERAL CODE SUMMARY**

BASED ON OCCUPANCY TYPE I2 INSTITUTIONAL WITH SPRINKLERS:  
 PER SECTION 1014.3  
 COMMON PATH OF EGRESS TRAVEL: 100 FEET  
 PER TABLE 1016.1  
 MAXIMUM ALLOWABLE TRAVEL DISTANCE: 300 FEET  
 PER SECTION 1017.3  
 MAXIMUM ALLOWABLE DEAD-END DISTANCE: 50 FEET  
 PER TABLE 1004.1.1  
 FLOOR AREA PER OCCUPANT: (BUSINESS)  
 100 GROSS SF  
 PER TABLE 1005.1  
 ALLOWABLE DOOR CAPACITY:  
 226 @ 34" DOOR  
 453 @ 68" DOOR  
 PER TABLE 1005.1  
 ALLOWABLE STAIR CAPACITY:  
 160 @ 48" STAIR

**CODE COMPLIANCE PLAN  
GENERAL NOTES**

ADDRESS:  
Maine Medical Center  
22 Bramhall Street  
Portland, ME 04102

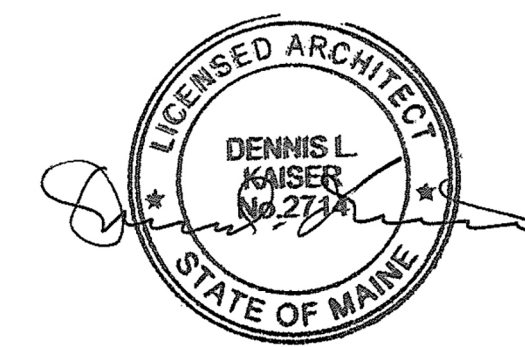
**APPLICABLE CODES AND STANDARDS:**

Code Type	Applicable Code (Model Code Basis)
Building	2009 International Building Code
Fire Prevention	NFPA 101: Life Safety Code, 2009 Edition Chapter 18: New Health Care Occupancies Chapter 19: Existing Health Care Occupancies Portland Fire Prevention Fire Code 2006 NFPA 1 Required Fire Protection Systems: NFPA 13 sprinkler system (2009 IBC 407.5) Fire alarm system (2009 IBC 407.6) Standpipe system (2009 IBC 905.3.1) Fire extinguishers (2009 IBC 906.1)
Accessibility	Maine Human Rights Commission
Electrical	2011 National Electrical Code
Mechanical	ASHRAE 62.1 - 2007 ASHRAE 62.2 - 2007
Plumbing	2009 Uniform Plumbing Code (with State Amendments)
Energy Conservation	2009 International Energy Conservation Code
Joint Commission	NFPA 101 Applicable Code Year: 2000 Edition

CONSTRUCTION TYPE:  
TYPE IIA (TABLE 601)

FIRE SPRINKLERED THROUGHOUT:  
YES.

OCCUPANCY GROUPS:  
OCCUPANCY TYPE I2 INSTITUTIONAL



Revisions

NO.	ISSUED FOR PERMIT	DATE
	09.15.16	

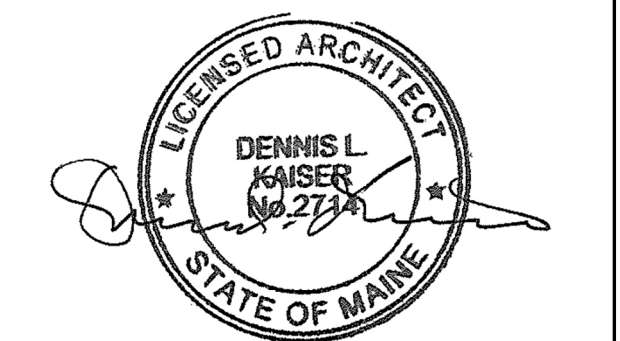
**Sheet Information**  
 Date: September 15, 2016  
 Job Number: 1521XXJXX  
 Drawn: Author  
 Checked: sc  
 Approved: Approver  
 Title

**LIFE SAFETY PLAN  
LEVEL 6**

Sheet  
**A01-06**



**1 LEVEL 06 - LIFE SAFETY PLAN**  
1/8" = 1'-0"



Revisions

ISSUED FOR PERMIT	
NO.	DATE
Sheet Information	
Date	September 15, 2016
Job Number	1521XX-XXX
Drawn	Author
Checked	JPK
Approved	Approver
Title	

**LEVEL 06  
OVERALL PLAN**


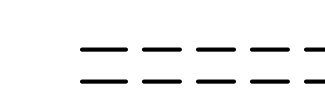

Sheet  
**A02-06**



**1 LEVEL 06 OVERALL FLOOR PLAN**  
1/8" = 1'-0"



DEMOLITION LEGEND

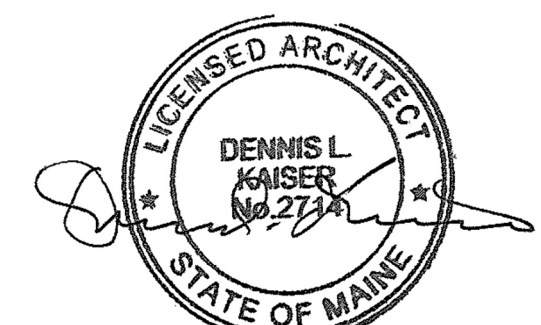
-  NOT IN SCOPE OF WORK
-  DEMO
-  EXISTING TO REMAIN

GENERAL DEMOLITION NOTES

1. THE EXTENT OF THE DEMOLITION WORK INDICATED IN DRAWINGS AND NOTES DESCRIBE THE GENERAL SCOPE OF WORK ONLY AND ARE NOT INTENDED TO BE INCLUSIVE OF ALL THE DEMOLITION WORK WHICH MAY BE REQUIRED TO COMPLETE THE FULL SCOPE OF WORK. VERIFY ALL CONDITIONS IN THE FIELD.
2. EXISTING BUILDING ELEMENTS AND FIXTURES NOT INDICATED FOR REMOVAL ARE TO BE PROTECTED DURING DEMOLITION AND CONSTRUCTION AS REQUIRED. THE CONDITION OF ALL BUILDING FINISHES NOT TO BE ALTERED OR REMOVED ARE TO BE RECORDED PRIOR TO THE START OF DEMOLITION AND CONSTRUCTION.
3. SCHEDULE AND OBTAIN APPROVAL OF THE OWNER, UTILITIES AND LOCAL AGENCIES HAVING AUTHORITY PRIOR TO BEGINNING DEMOLITION WORK.
4. ALL DEMOLITION DEBRIS IS TO BE PLACED IN DUMPSTERS(S), COVERED, WETTED AND SECURED AS REQUIRED BY MUNICIPAL ORDINANCES PRIOR TO DISPOSAL. COORDINATE AND OBTAIN OWNERS APPROVAL FOR THE LOCATION OF DUMPSTERS(S).
5. EXISTING MECHANICAL, ELECTRICAL AND PLUMBING SERVICES NOTED FOR REMOVAL ARE TO BE REMOVED IN THEIR ENTIRETY. PATCH FLOOR OR WALL PENETRATIONS SMOOTHLY AND FLUSH TO FORM A STRUCTURAL PATCH.
6. ALL PARTITIONS INDICATED TO BE REMOVED ARE TO BE COMPLETELY REMOVED FROM FLOOR DECK TO UNDERSIDE OF STRUCTURE.
7. FIRE PROTECTION SYSTEM ON FLOOR TO REMAIN ACTIVE DURING CONSTRUCTION. COORDINATE WITH OWNER FOR ANY INTERIM LIFE SAFETY REQUIREMENTS.
8. THE EXISTING STRUCTURE INCLUDING BUT NOT LIMITED TO COLUMNS, BEAMS AND FLOORS ARE NOT TO BE ALTERED OR DAMAGED DURING DEMOLITION OR CONSTRUCTION, EXCEPT WHERE INDICATED IN THE DRAWINGS. ANY STRUCTURAL ELEMENTS DAMAGED DURING DEMOLITION OR CONSTRUCTION ARE TO BE REPAIRED TO FULL STRUCTURAL INTEGRITY AND REQUIRED FIRE-RESISTIVE RATING BY THE CONTRACTOR AT EXPENSE.
9. ALL EXISTING BUILDING FINISHES, INDICATED TO REMAIN, WHICH ARE DISTURBED BY THE REQUIRED DEMOLITION ARE TO BE PATCHED AND REFINISHED TO MATCH ADJACENT CONDITIONS OR AS INDICATED IN THE FINISH SCHEDULE. PAM (PATCH AND MATCH) INDICATES THE FINISH SHALL BE REPAIRED TO MATCH ADJACENT FINISH.
10. AT THE CONCLUSION OF THE DEMOLITION WORK, REMOVE ALL DEBRIS AND SURPLUS MATERIALS AND LEAVE WORK AREA READY TO RECEIVE NEW WORK FINISHES.
11. PROVIDE DUST PROTECTION DURING CONSTRUCTION.
12. COORDINATE ITEMS FOR SALVAGE WITH OWNER.

DEMOLITION KEYNOTES

- 1 REMOVE EXISTING PARTITIONS IN THEIR ENTIRETY, INCLUDING ALL FINISHES, WALL MOUNTED FIXTURES, AND ANCHORS.
- 2 REMOVE FINISHES AND GWB OF EXISTING PARTITION FOR INDICATED SIDE TO 6" ABOVE PROPOSED FINISH CEILING.
- 3 REMOVE AND SALVAGE EXISTING DOOR (DOOR HARDWARE TO FACILITATE INSTALLATION OF NEW DOOR HARDWARE).
- 4 REMOVE & DISPOSE OF CASEWORK, MILLWORK, SHELVING, HARDWARE AND/OR ACCESSORIES, INCLUDING ALL PLUMBING & ELECTRICAL.
- 5 REMOVE AND DISPOSE OF FLOORING AND ALL ASSOCIATED MATERIALS SUCH AS MASTICS, GLUES, AND OTHER ADHESIVES. REMOVE AND DISPOSE OF ALL FLOOR TILE, COVE BASE ETC. GO TO COORDINATE THE PREPARATION OF EXISTING SLAB TO INCLUDE SANDING, GRINDING, AND LEVELING AS REQUIRED FOR PROPER INSTALLATION OF NEW FLOOR FINISHES.
- 6 REMOVE AND DISPOSE OF ALL CEILING SYSTEMS AND ASSOCIATED PARTS INCLUDING BUT NOT LIMITED TO ACT, FRAMING, CLIPS, FASTENERS, GWB, INSULATION, LIGHTING FIXTURES & DIFFUSERS. COORDINATE WITH OWNER, REFERENCE SPECS FOR ADDITIONAL SCOPE.
- 7 REMOVE & DISPOSE OF EXISTING PLUMBING FIXTURES INCLUDING BUT NOT LIMITED TO TOILET, LAVATORIES, COUNTER, AND PLUMBING ACCESSORIES. REFER TO ENGINEERING DRAWINGS FOR ADDITIONAL INFORMATION.
- 8 REMOVE PORTION OF CEILING AS REQUIRED TO FACILITATE INSTALLATION OF NEW PLUMBING OR ELECTRICAL AT FLOOR ABOVE. PATCH CEILING TO MATCH EXIST CONDITIONS. REFERENCE PLUMBING AND ELECTRICAL DRAWINGS FOR ADDITIONAL INFORMATION.
- 9 REMOVE & DISPOSE OF EXISTING WINDOW, GLAZING, FRAME & ASSOCIATED HARDWARE.
- 10 REMOVE & DISPOSE OF WINDOW SHADE, PATCH CURTAIN WALL TO MATCH EXISTING CONDITIONS AS REQUIRED.
- 11 REMOVE & DISPOSE OF EXISTING WINDOW SILL.



Revisions

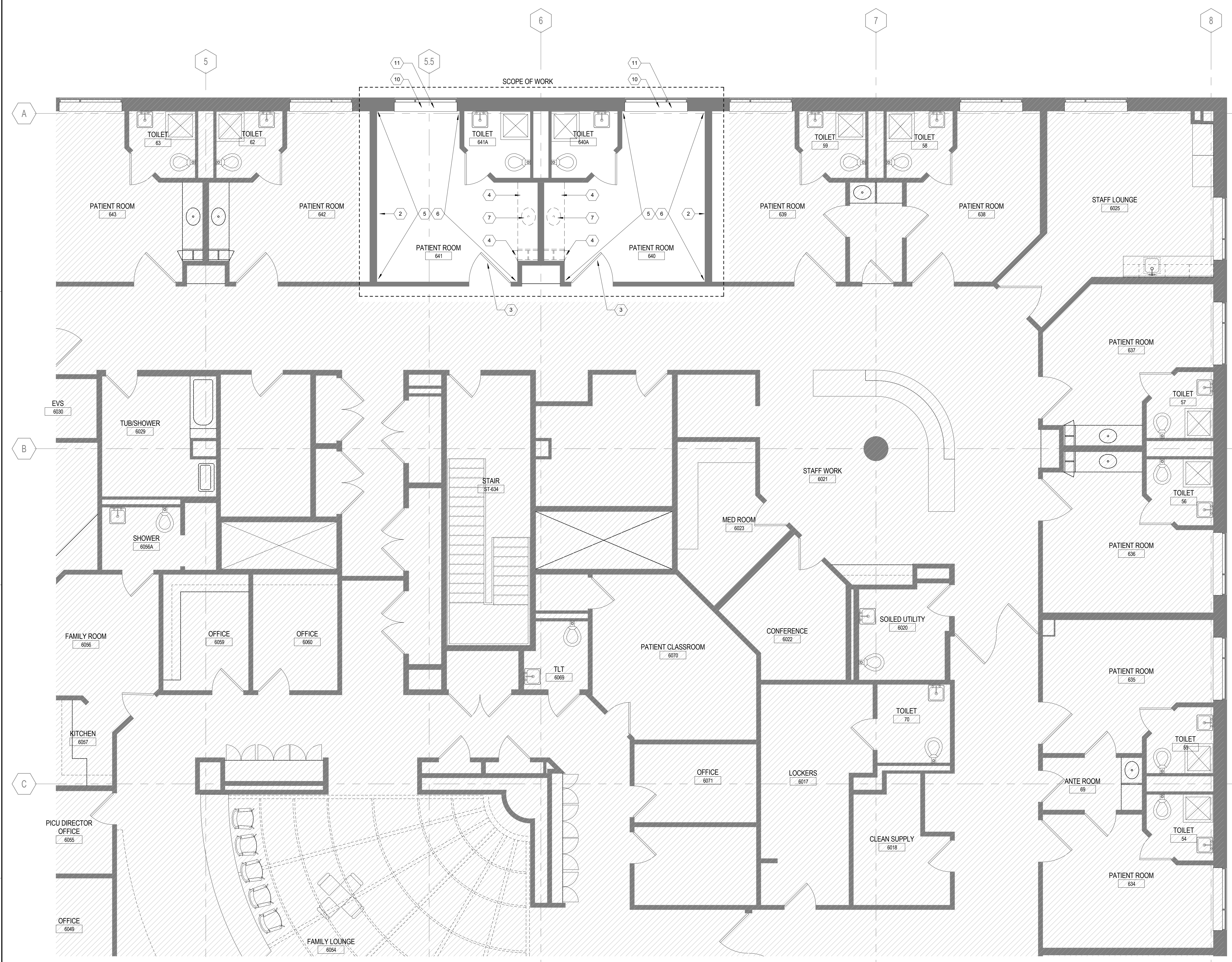
NO.	ISSUED FOR PERMIT	DATE
	09.15.16	09.15.16

Sheet Information

Date	September 15, 2016
Job Number	1521XX-XXX
Drawn	Author
Checked	sc
Approved	Approver
Title	

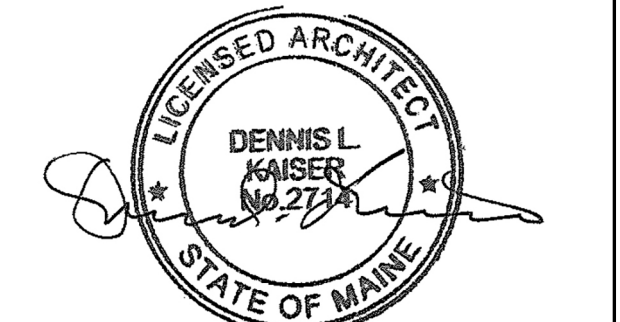
LEVEL 06 -  
DEMOLITION PLAN

Sheet  
A03-06



1 LEVEL 06 - DEMOLITION PLAN

1/4" = 1'-0"



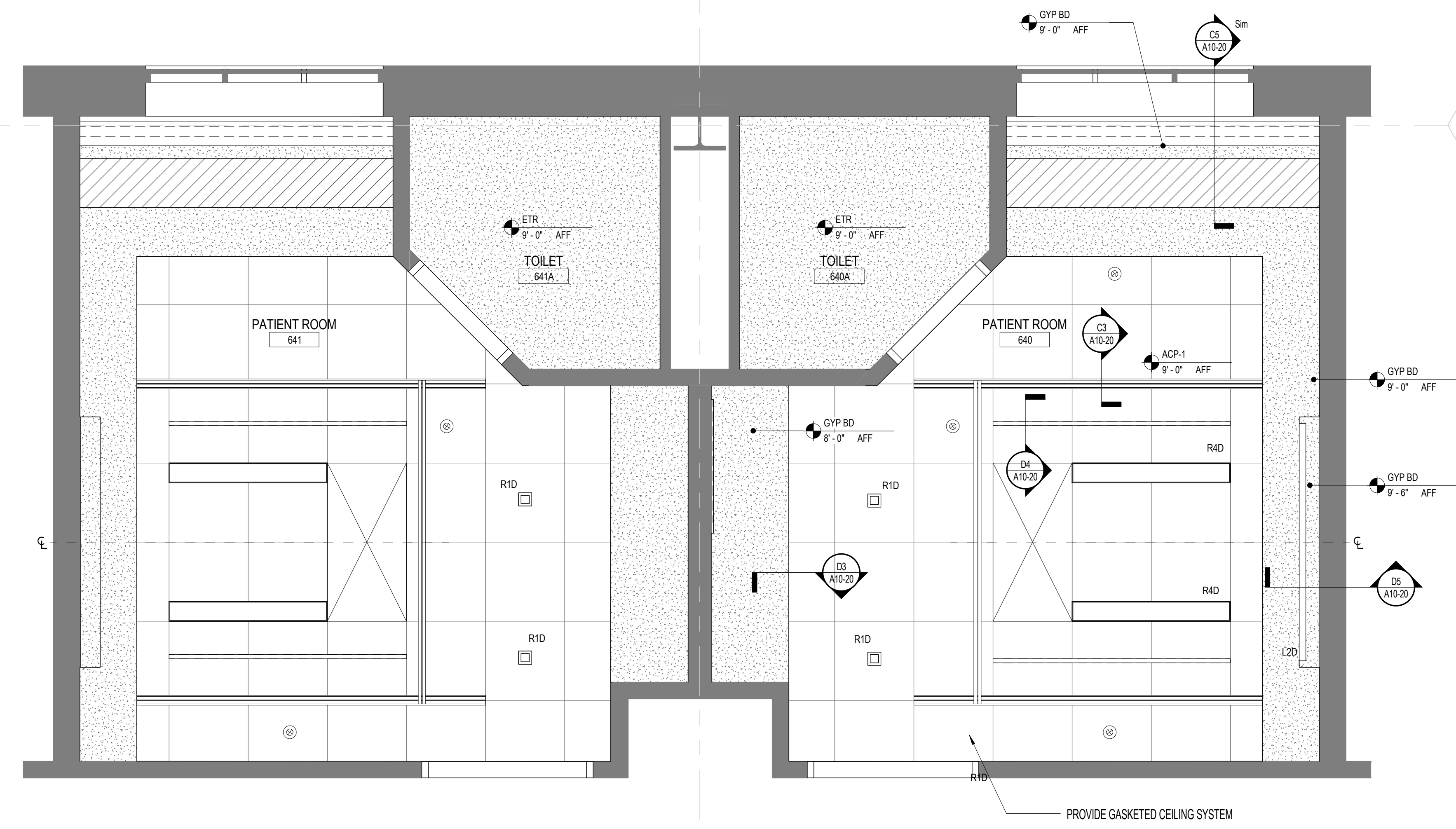
Revisions

ISSUED FOR PERMIT		09.15.16	
NO.	ISSUE DATE	NO.	ISSUE DATE
<b>Sheet Information</b>			
Date	September 15, 2016	Author	
Job Number	1521XXX.XXX	Checked	sc
Drawn		Approved	
<b>Title</b>			

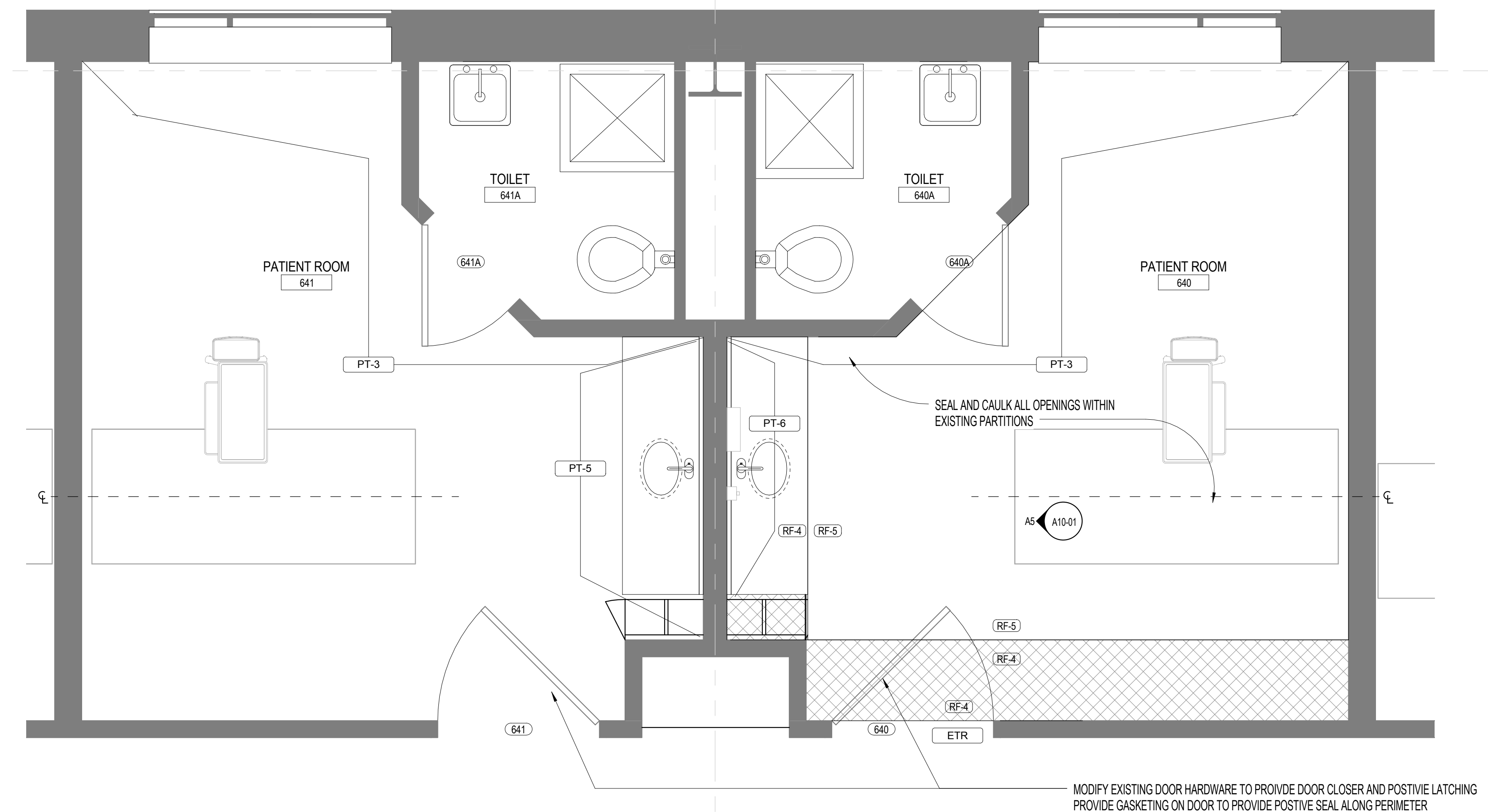
**PATIENT ROOM  
ENLARGED PLAN,  
RCP, ELEVATIONS**

Sheet

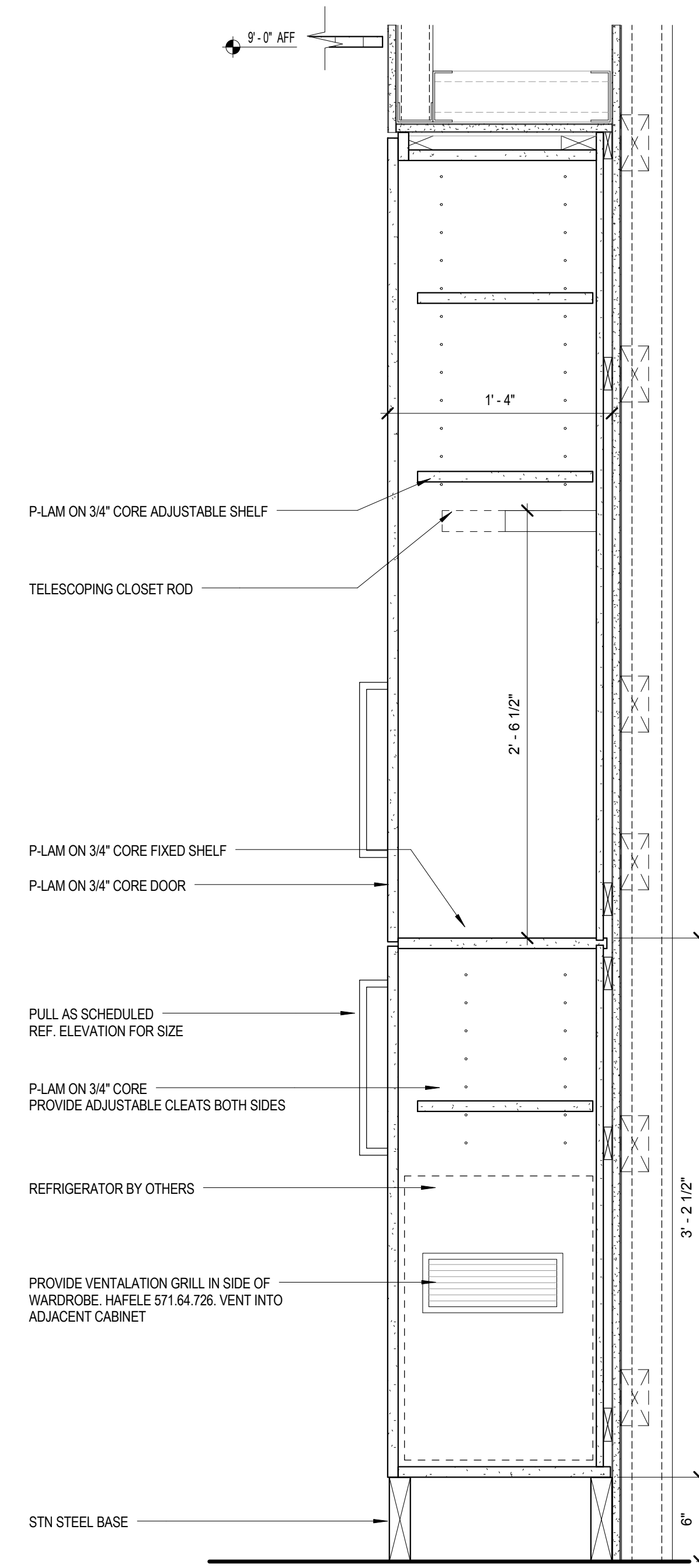
**A10-01**



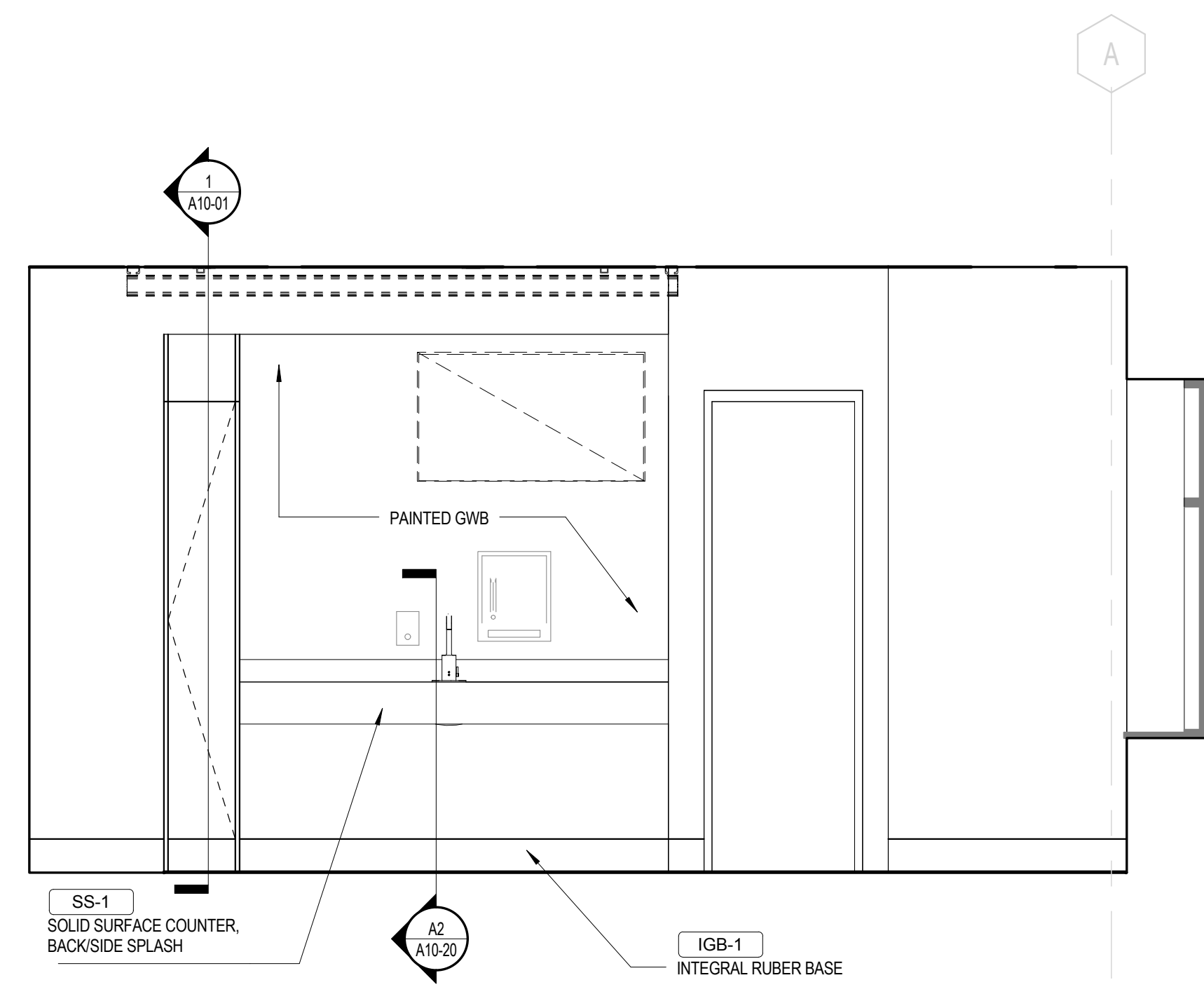
**C3 PATIENT ROOM - RCP**  
1/2" = 1'-0"



**A3 PICU PATIENT ROOM - ENLARGED FLOOR PLAN**  
1/2" = 1'-0"



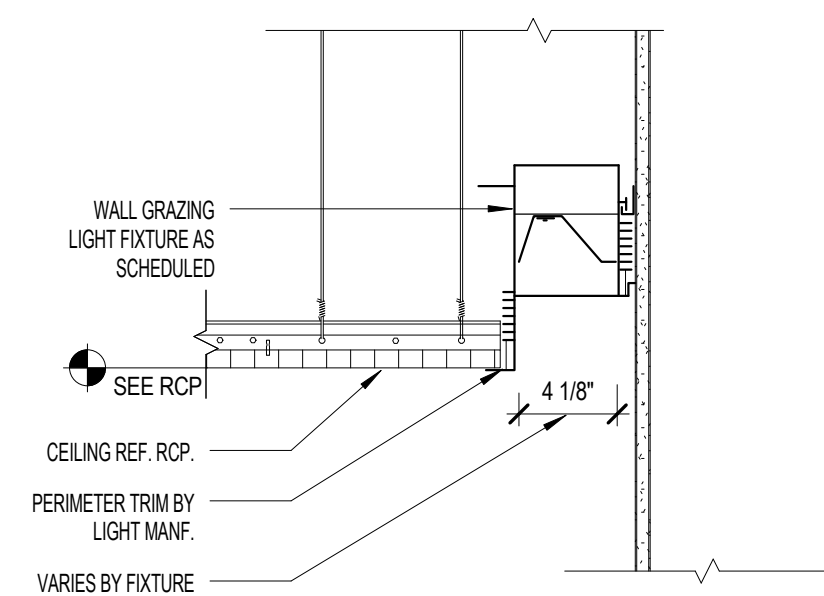
**1 PATIENT ROOM WARDROBE**  
1 1/2" = 1'-0"



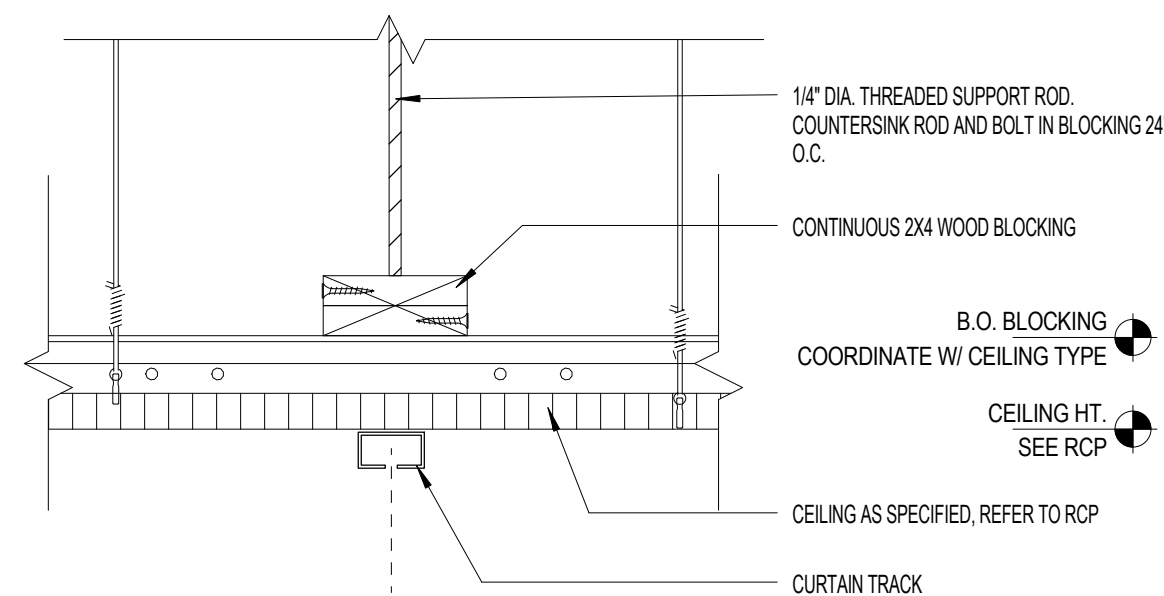
**A5 ELEVATION - FOOTWALL**  
1/2" = 1'-0"

MODIFY EXISTING DOOR HARDWARE TO PROVIDE DOOR CLOSER AND POSITIVE LATCHING  
PROVIDE GASKETING ON DOOR TO PROVIDE POSITIVE SEAL ALONG PERIMETER

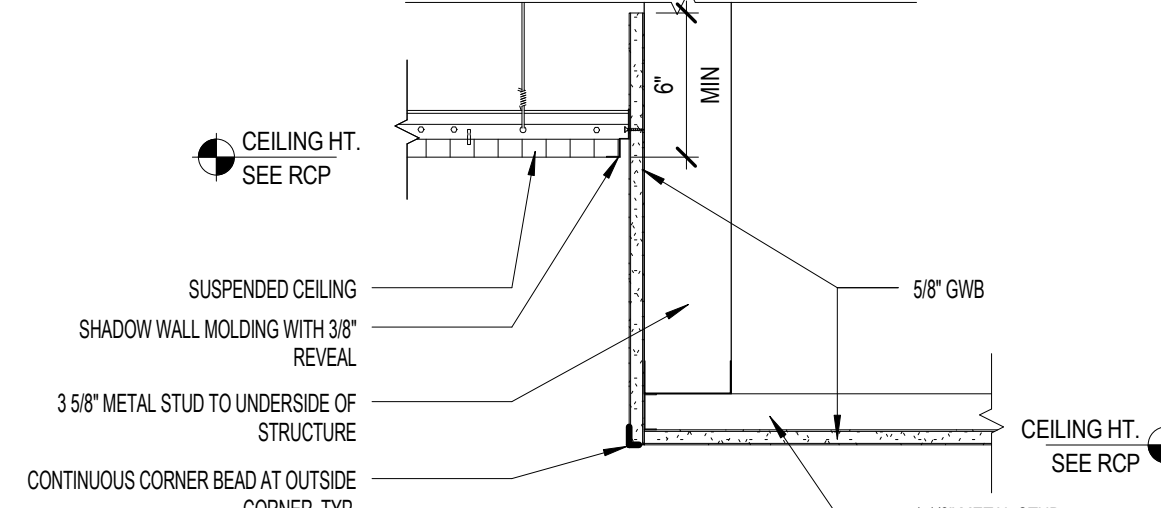




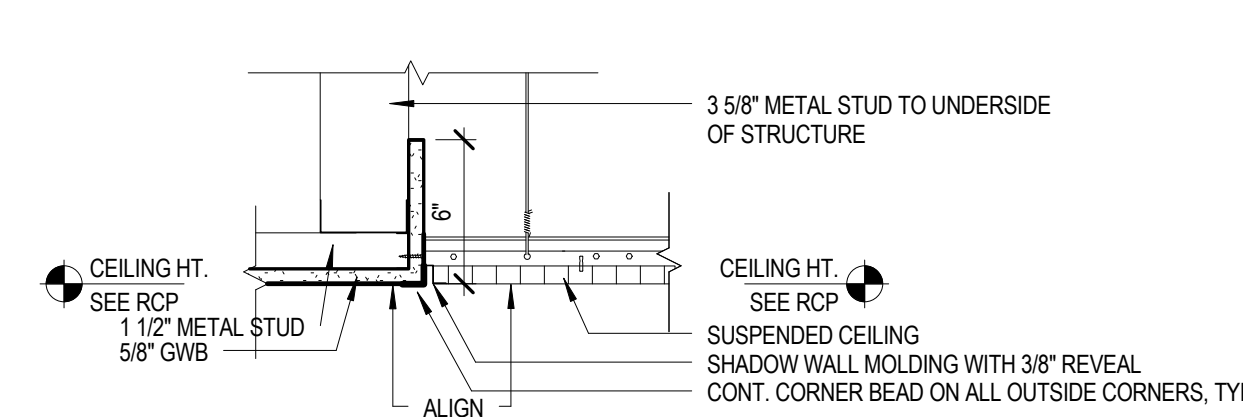
D5 TYPICAL WALL GRAZER  
1 1/2" = 1'-0"



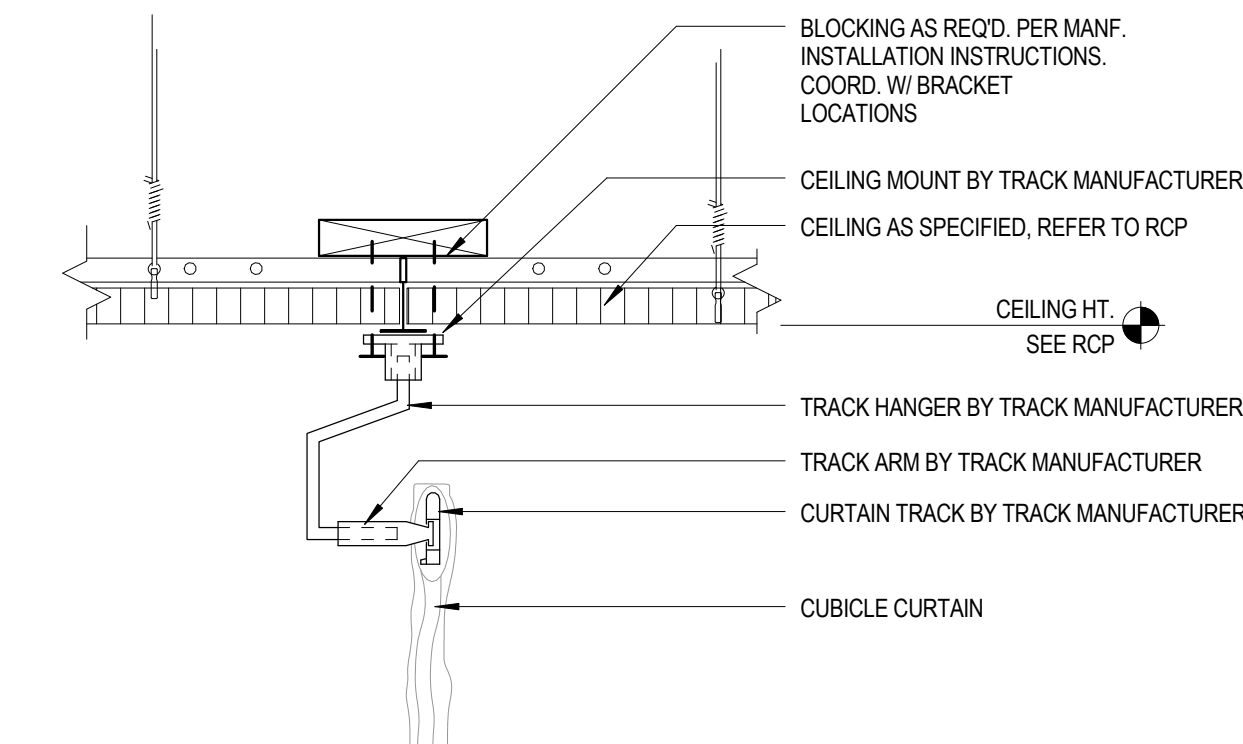
D4 CEILING DETAIL @ I.V. TRACK  
3" = 1'-0"



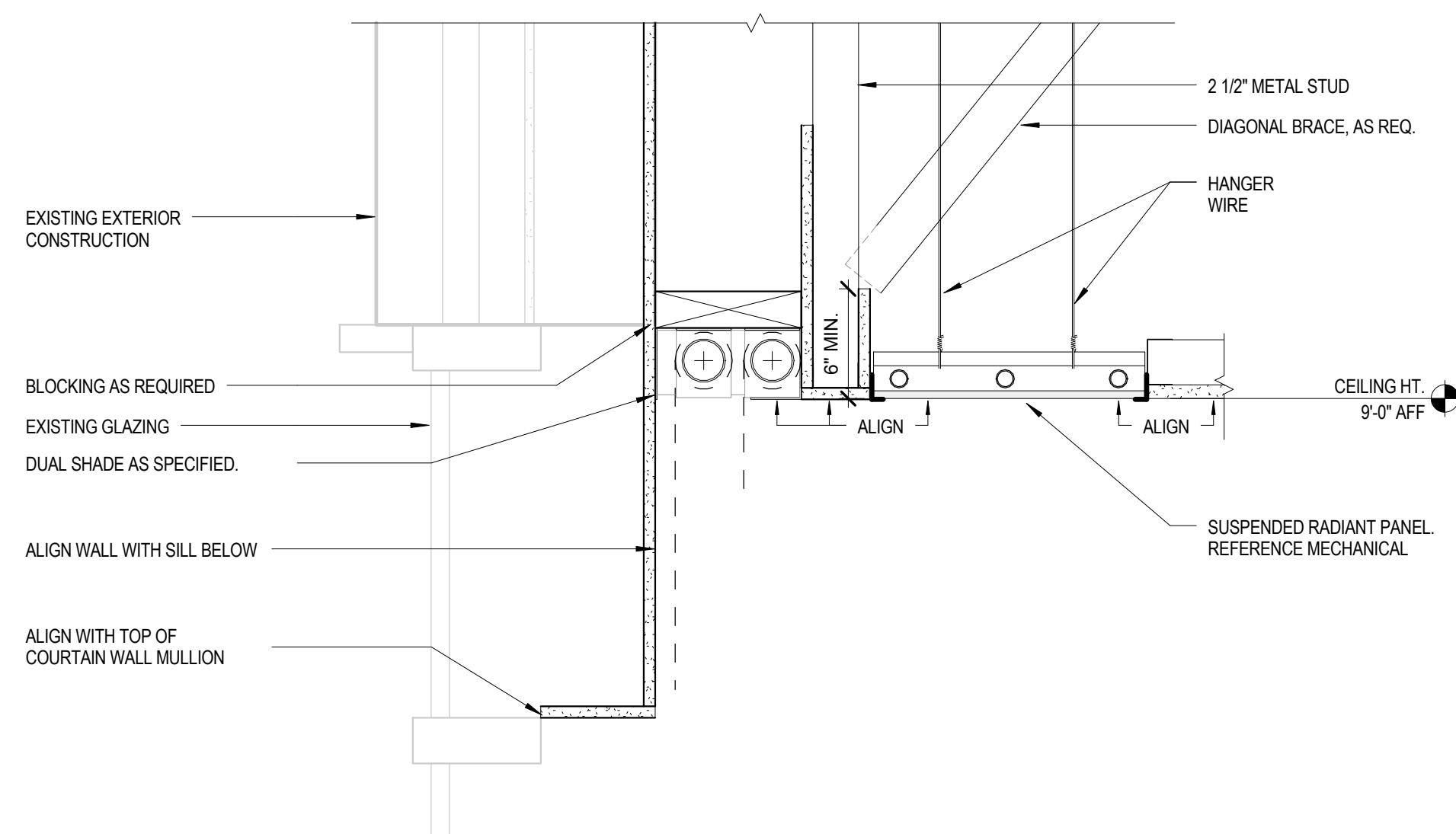
D3 CEILING DETAIL @ GWB/ACT SOFFIT  
1 1/2" = 1'-0"



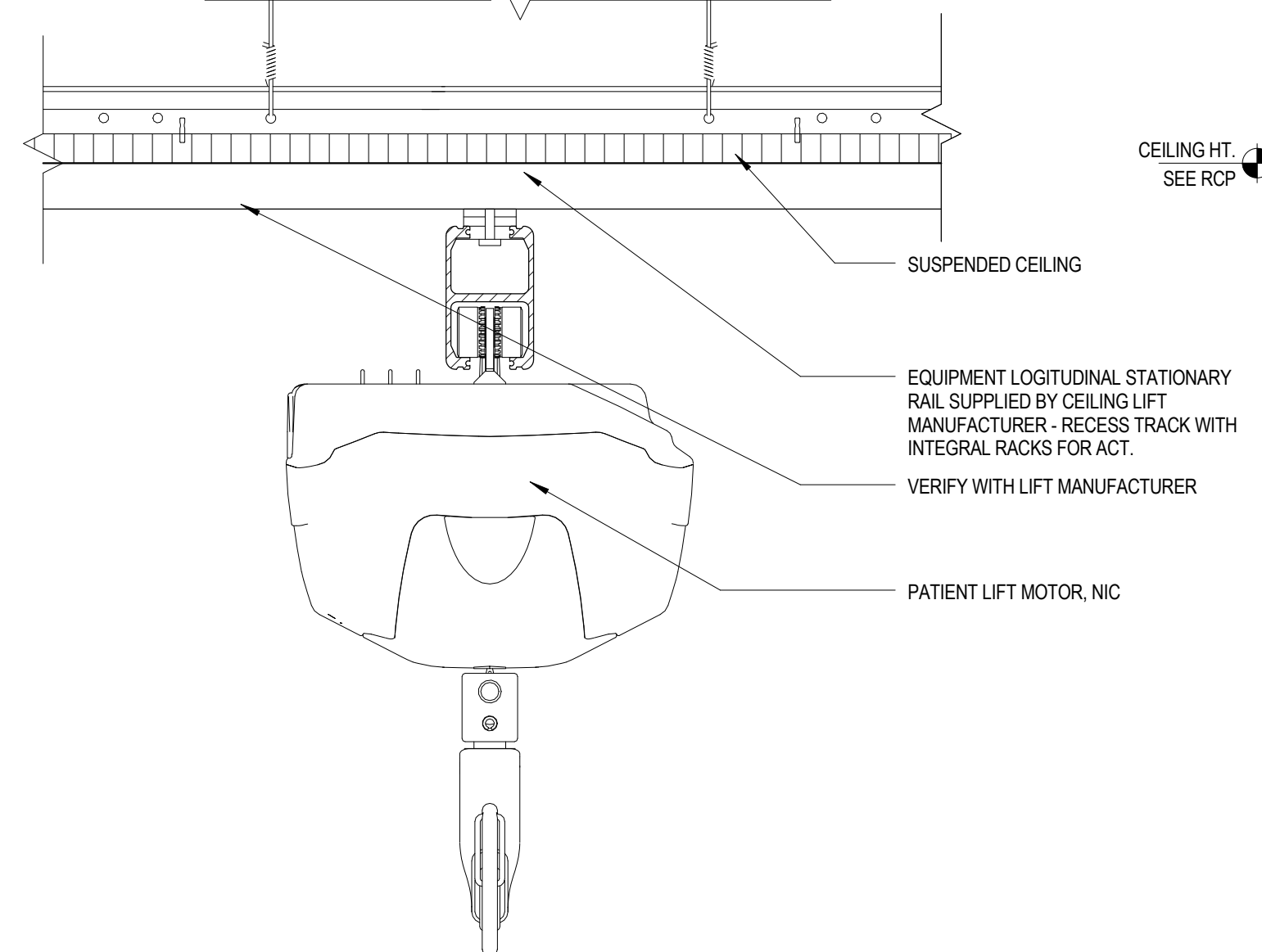
D2 CEILING DETAIL @ GWB/ACT COPLANAR  
1 1/2" = 1'-0"



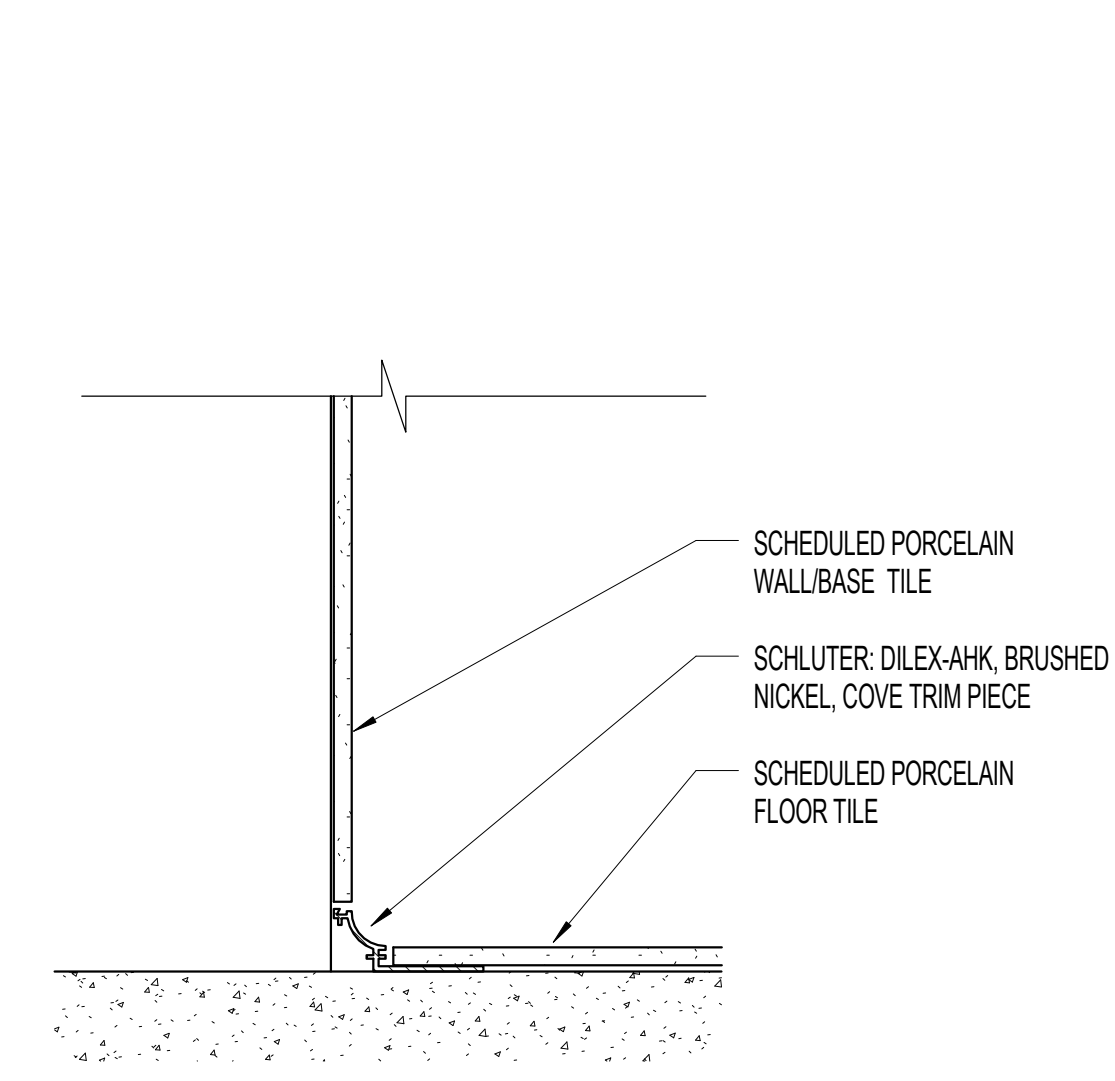
D1 CEILING DETAIL @ CUBICLE CURTAIN  
3" = 1'-0"



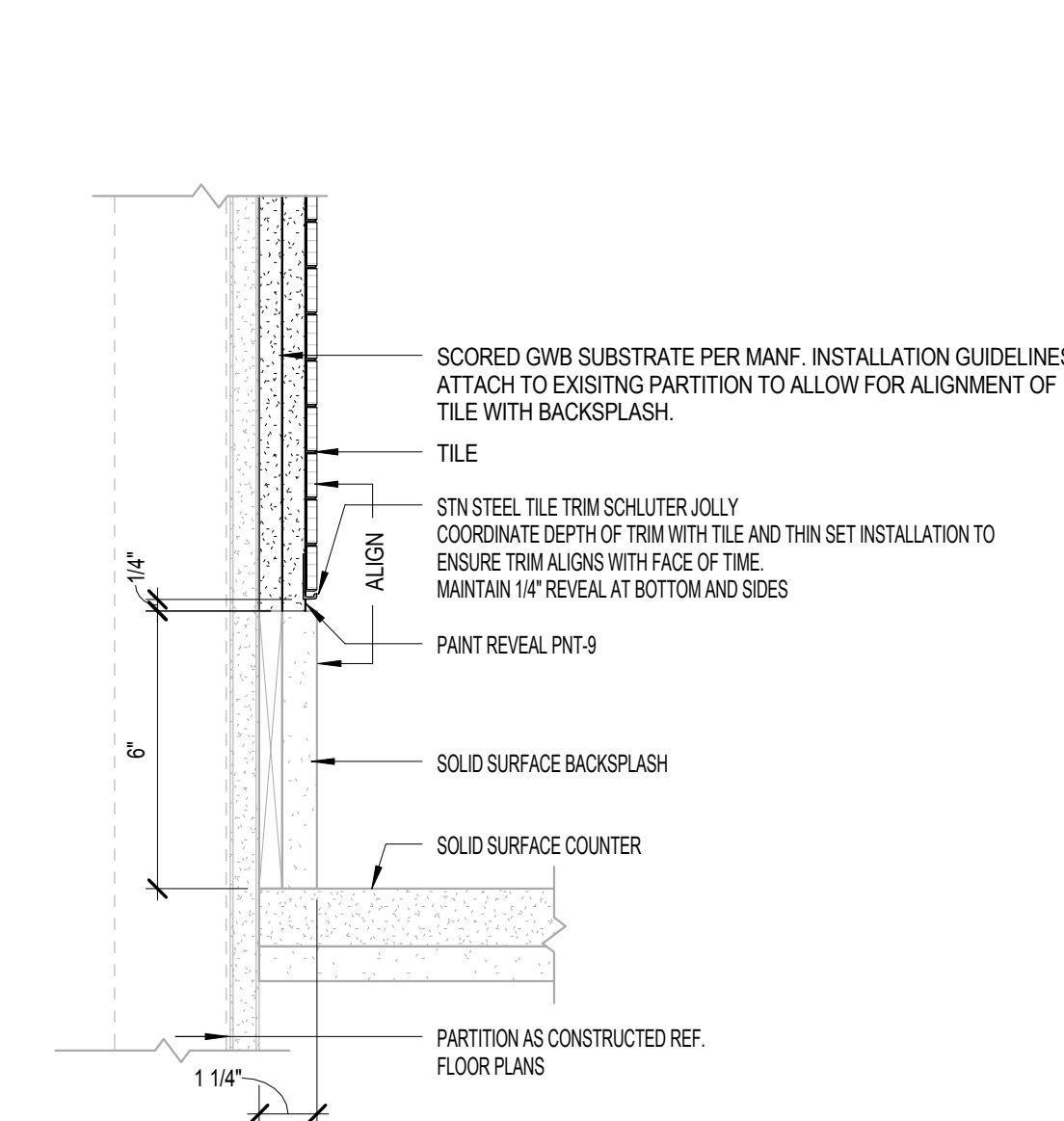
C5 DETAIL - CEILING AT PERIMETER  
1 1/2" = 1'-0"



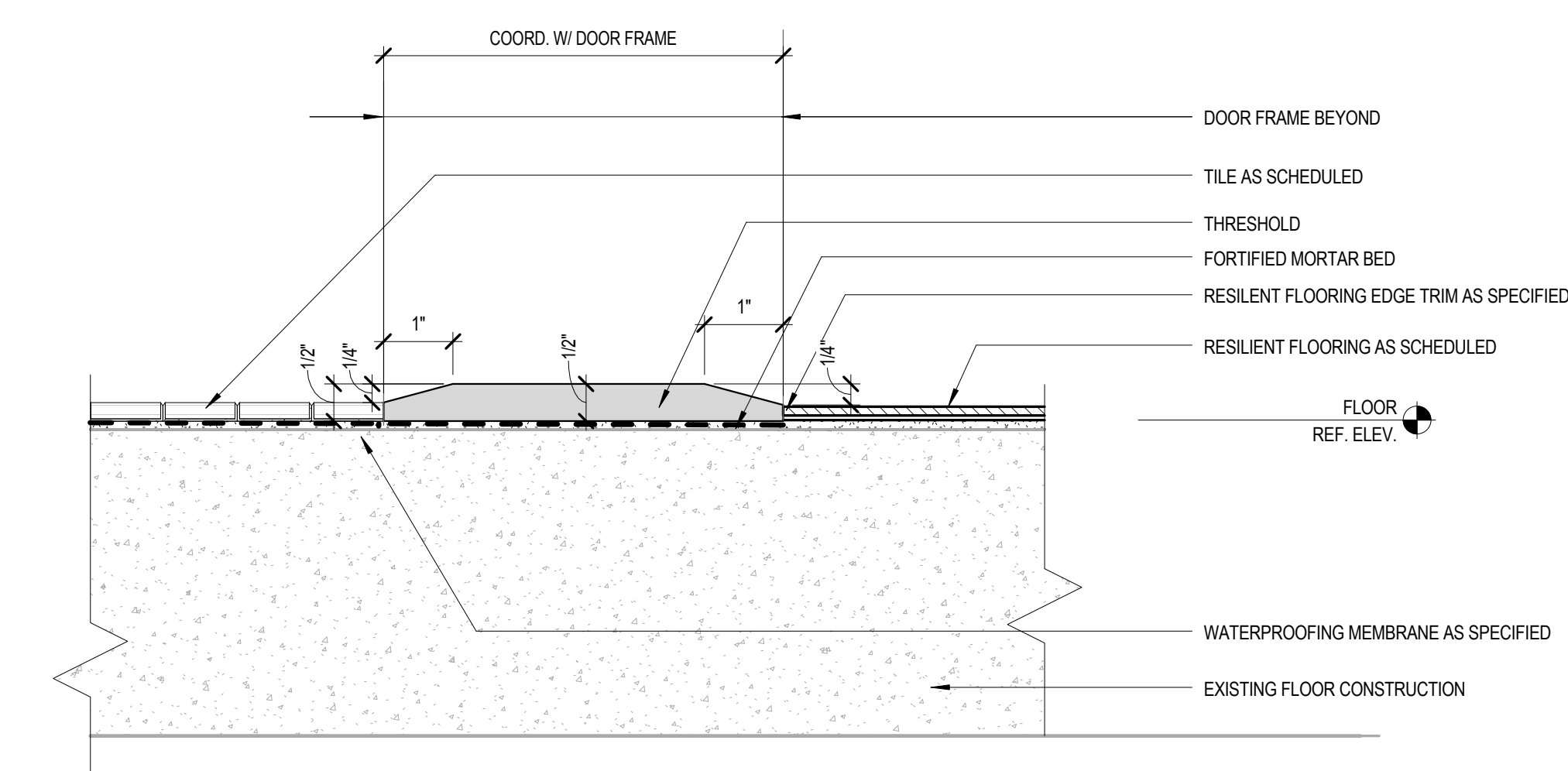
C3 PATIENT LIFT - RECESSED RAIL AND MOTOR  
3" = 1'-0"



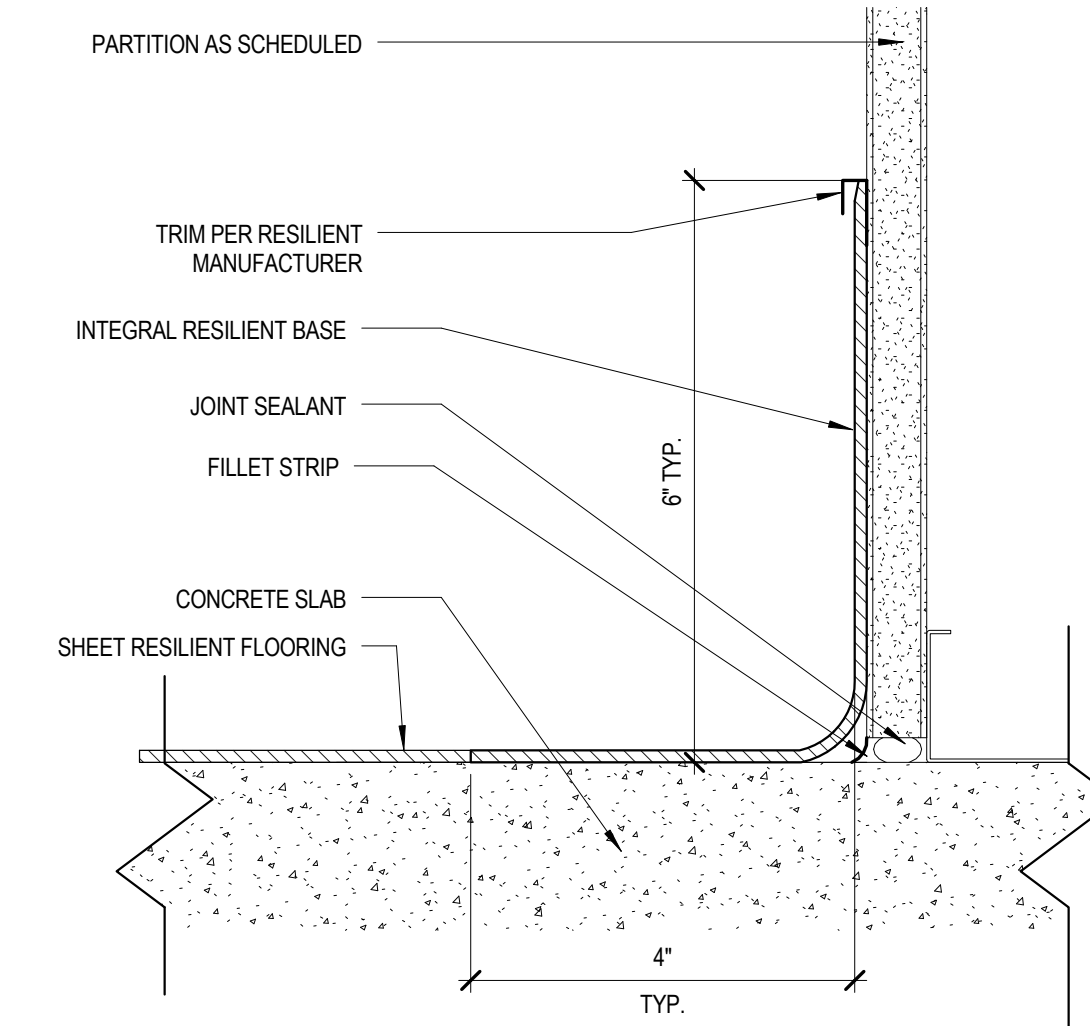
C2 SCHLUTER COVE TRIM  
3" = 1'-0"



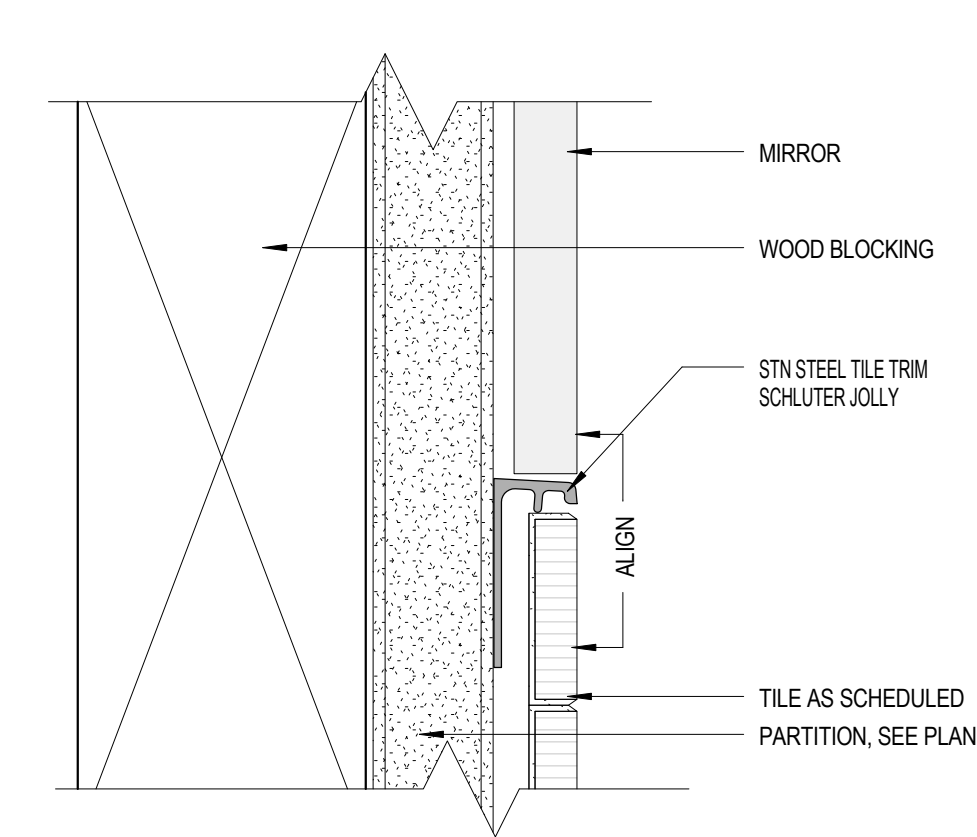
C1 DETAIL - TILE AT BACKSPASH  
3" = 1'-0"



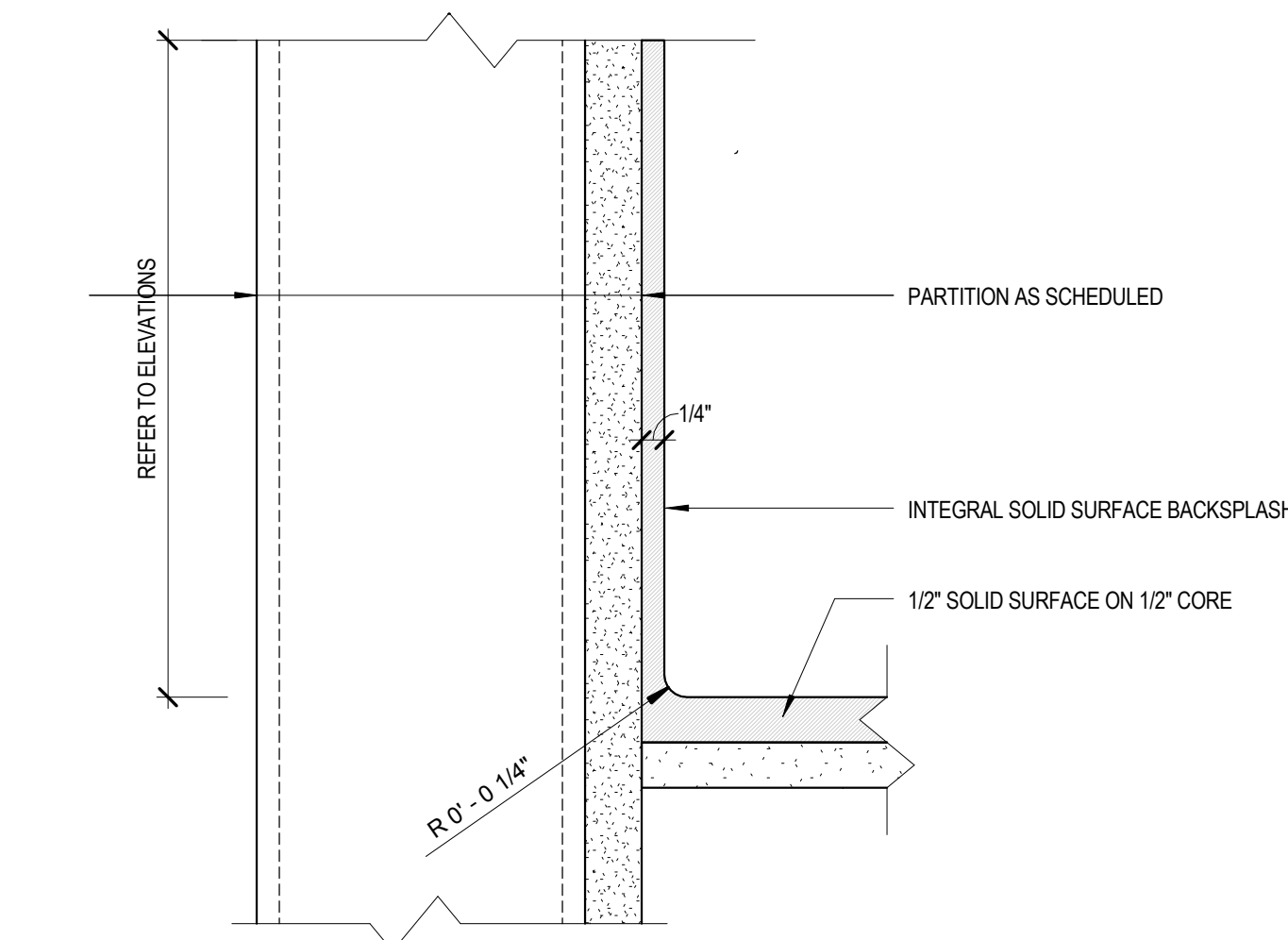
B5 DETAIL - THRESHOLD  
6" = 1'-0"



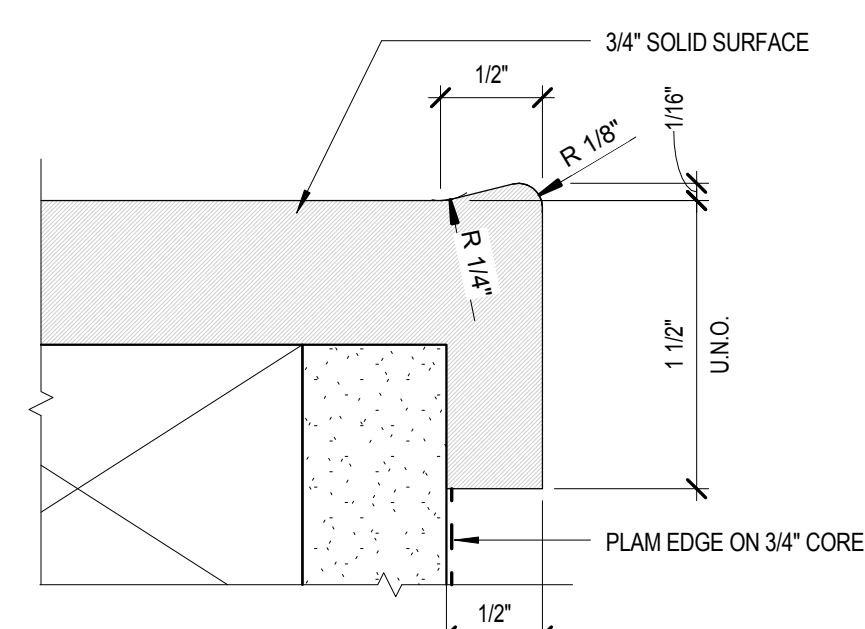
B3 WALL BASE DETAIL RESILIENT BASE  
@ SHEET RESILIENT FLOORING  
6" = 1'-0"



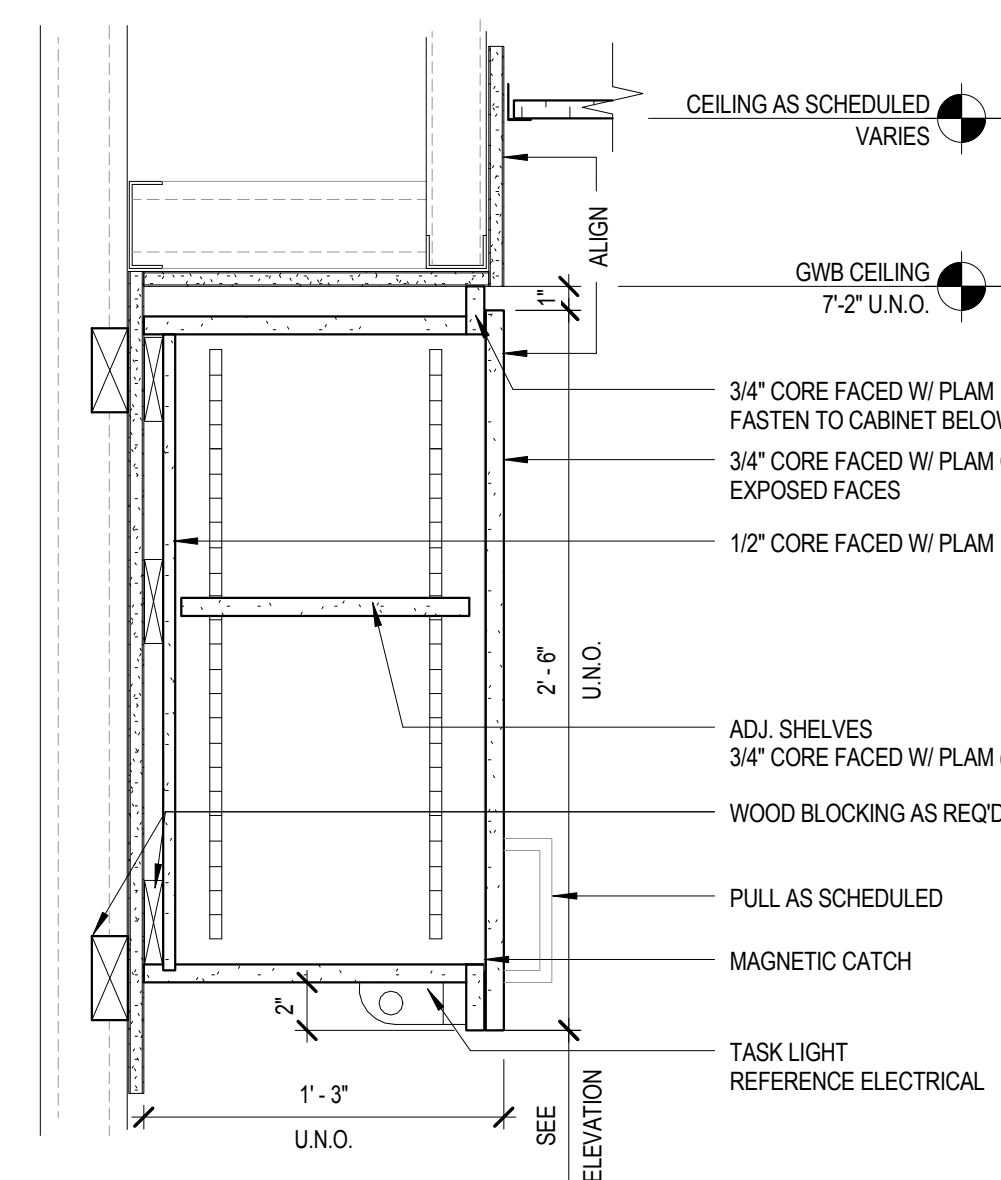
B2 MIRROR EDGE DETAIL  
12" = 1'-0"



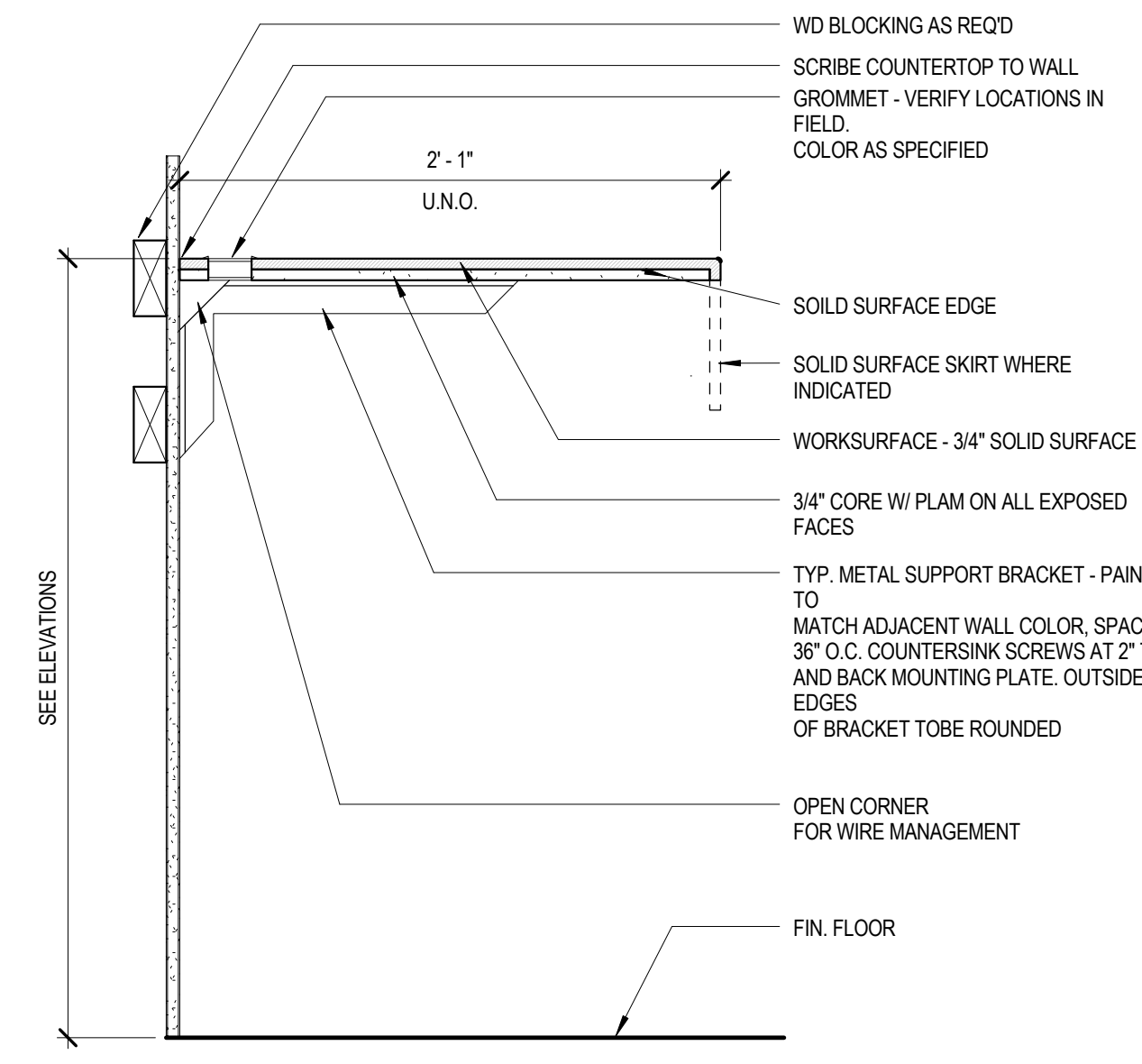
B1 DETAIL - INTEGRAL BACKSPASH  
6" = 1'-0"



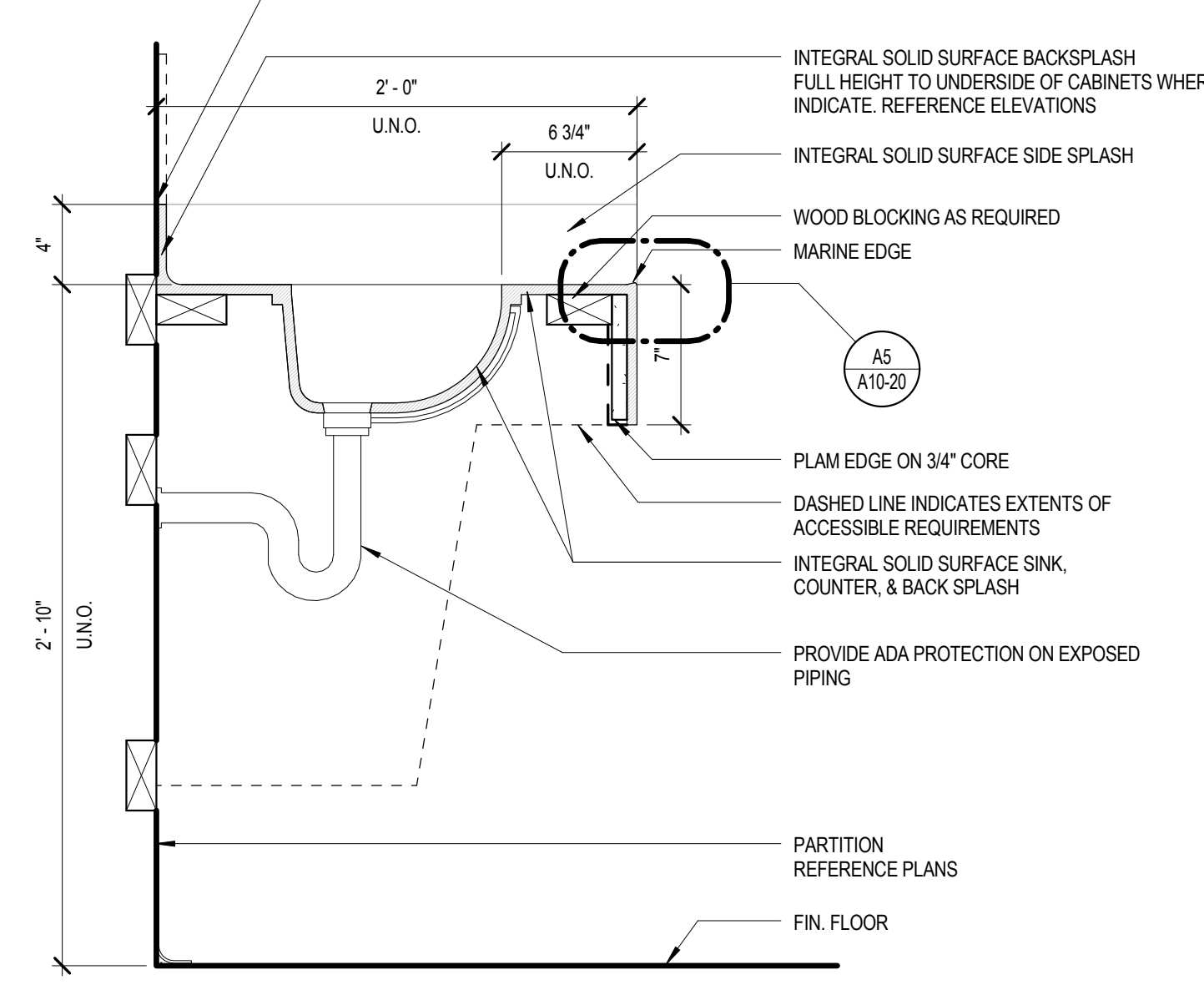
A5 SOLID SURFACE MARINE EDGE  
12" = 1'-0"



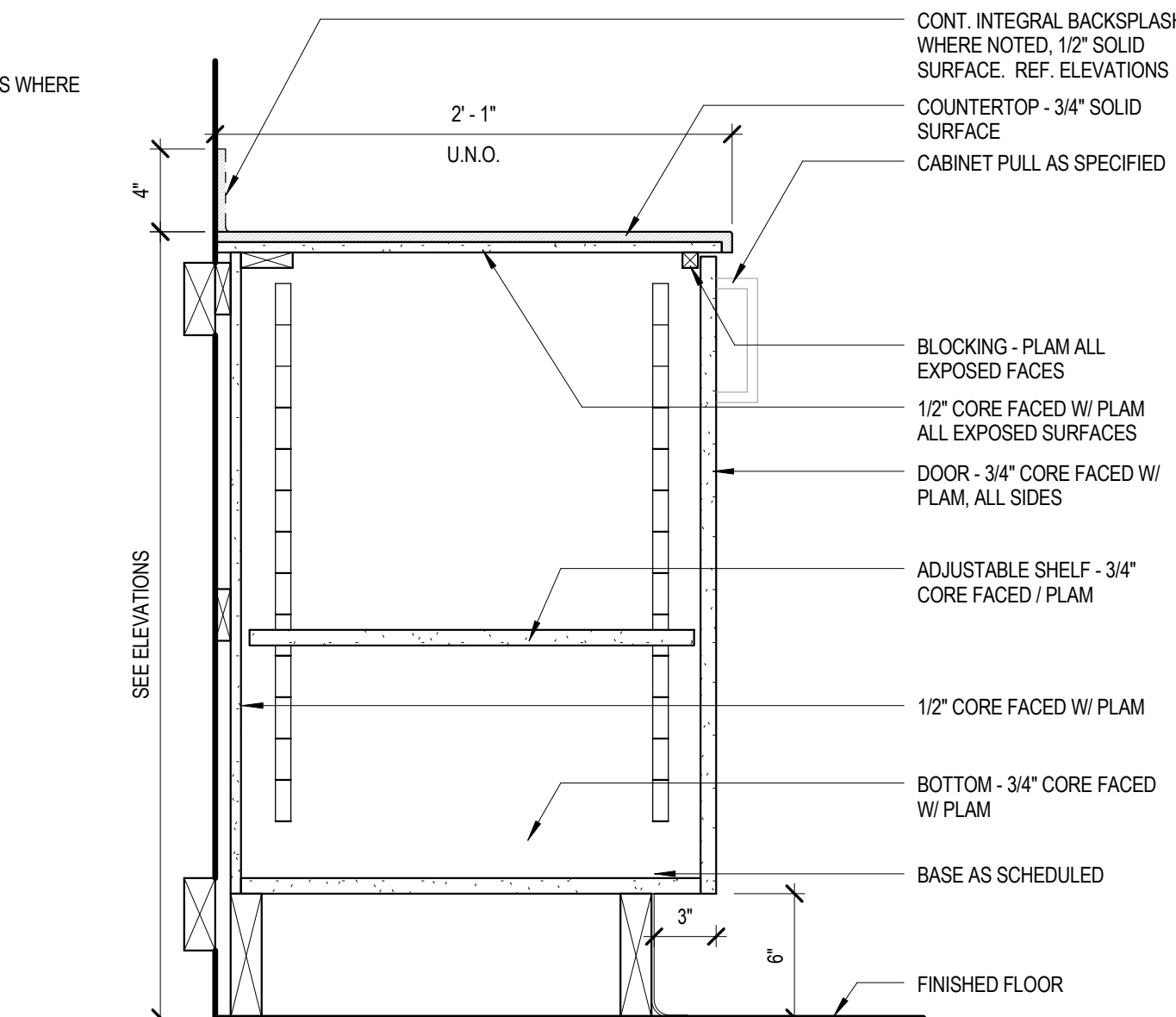
A4 WALL CABINET  
1 1/2" = 1'-0"



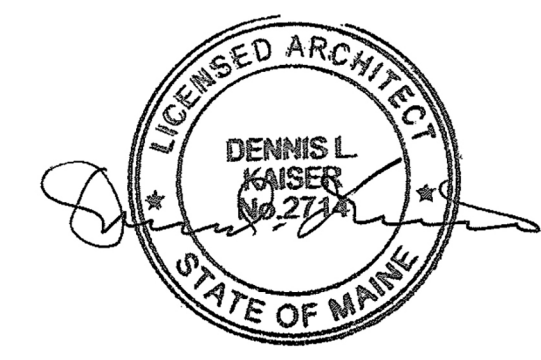
A3 COUNTER - SOLID SURFACE  
1 1/2" = 1'-0"



A2 COUNTER W/ INTEGRAL SINK - ROUND  
1 1/2" = 1'-0"



A1 BASE CABINET W/SHELF - SOLID SURFACE  
1 1/2" = 1'-0"

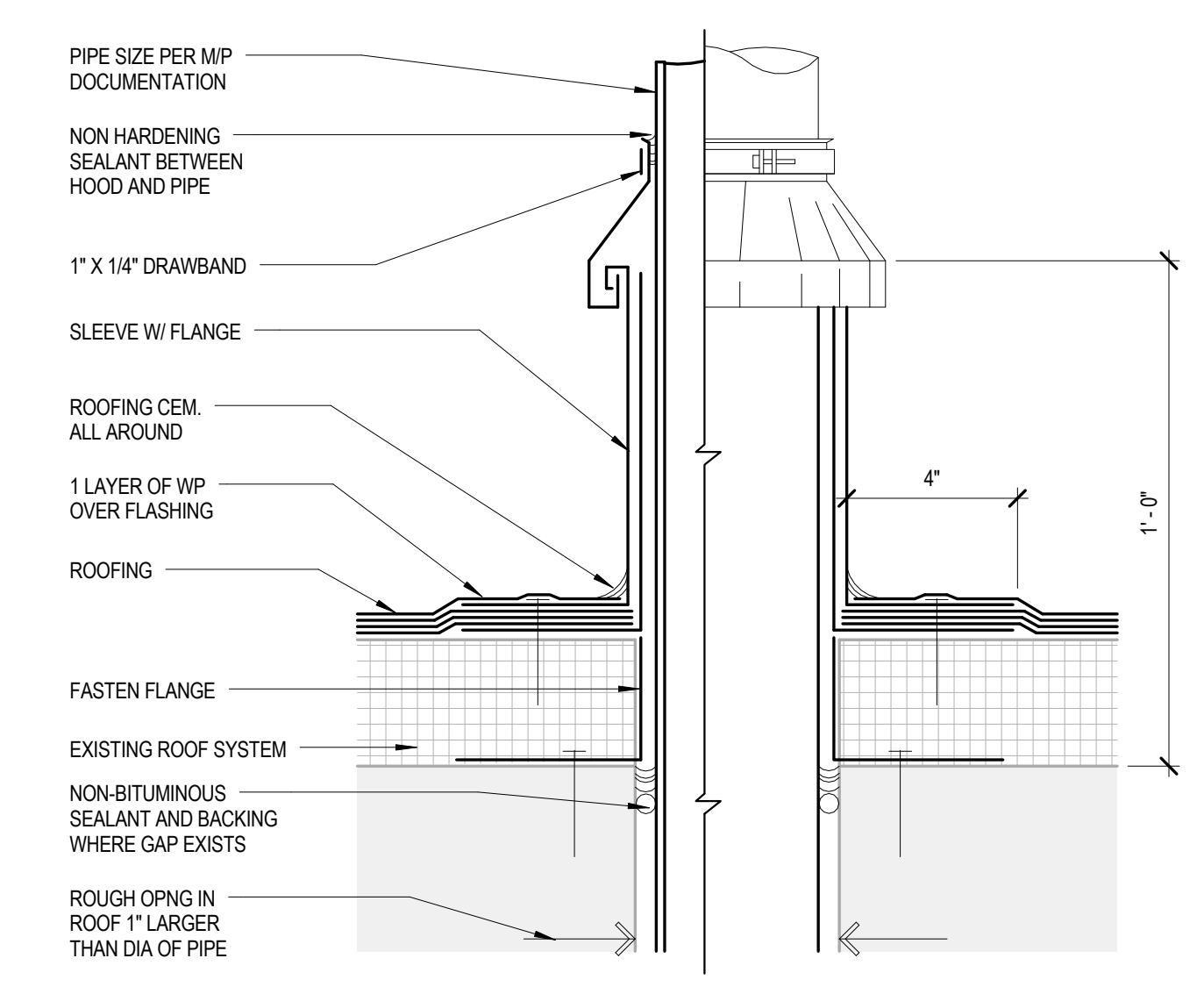


Revisions

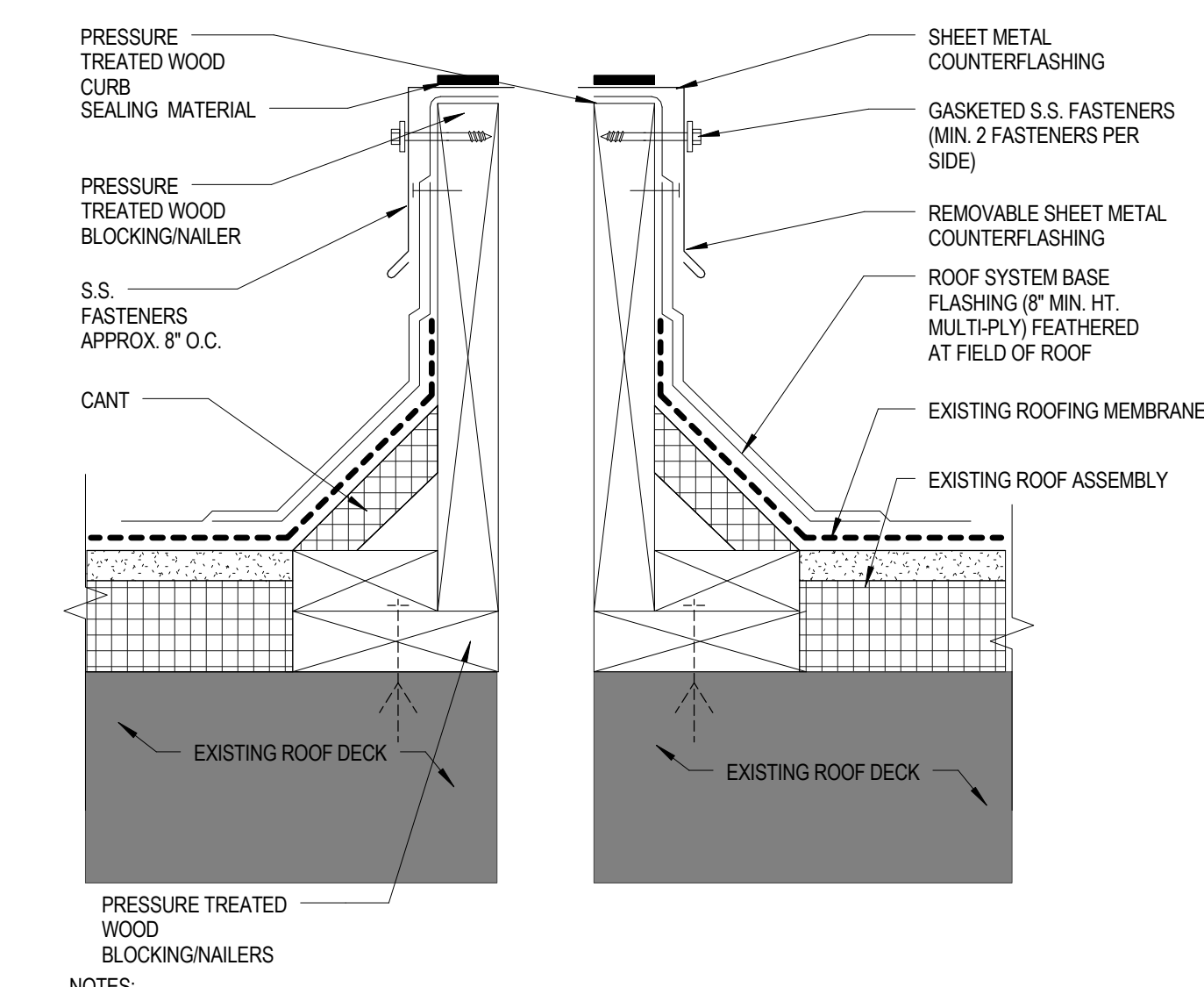
NO.	ISSUE	DATE
<b>Sheet Information</b>		
Date	September 15, 2016	
Drawn	1521XX/XXX	
Checked	JPK	
Approved		

**ARCHITECTURAL  
DETAILS**

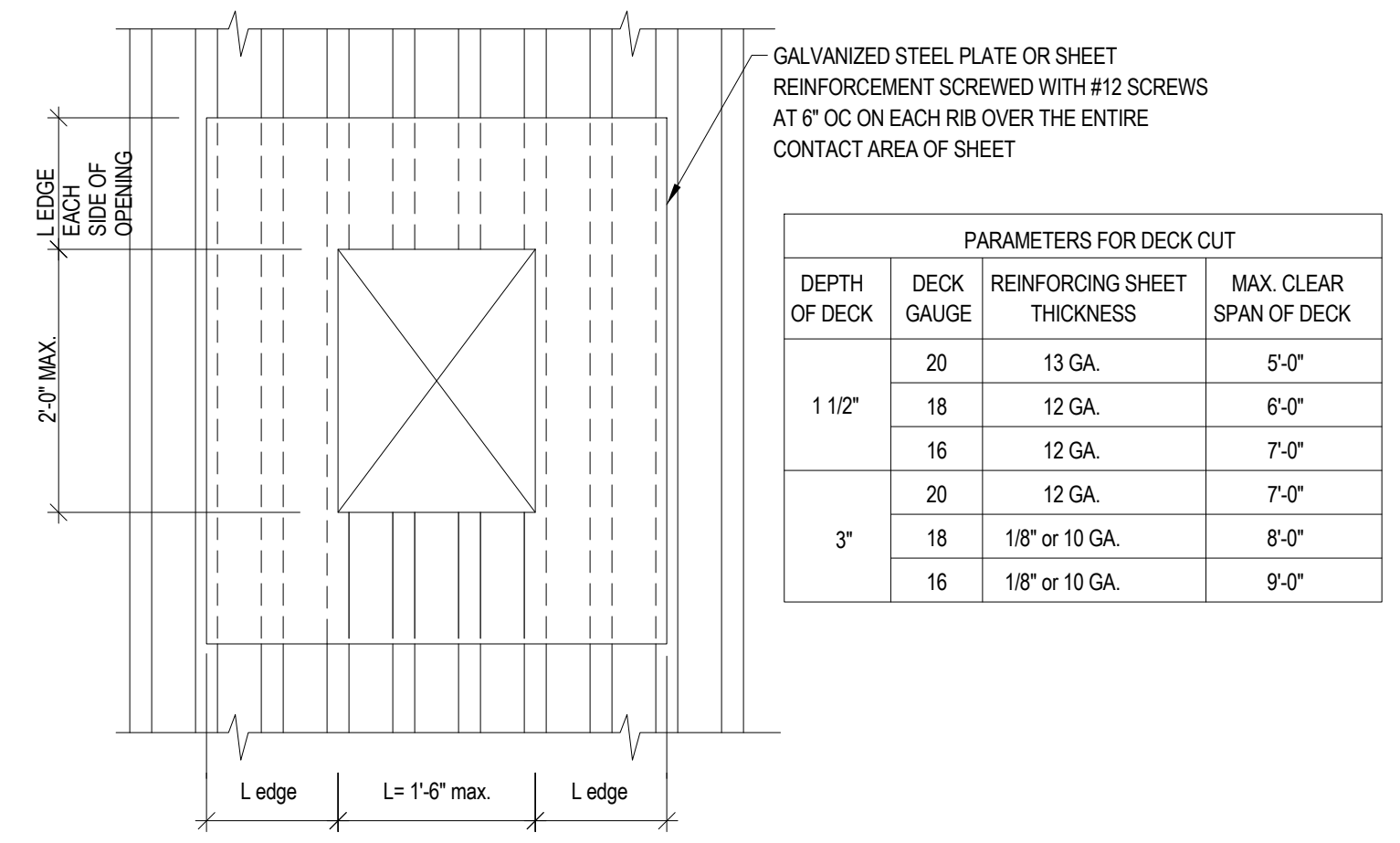
Sheet  
**A10-20**



**C2** ROOF DETAIL - PIPE FLASHING  
3\"/>



**C1** ROOF DETAIL - DUCT PENETRATION CURB  
3\"/>



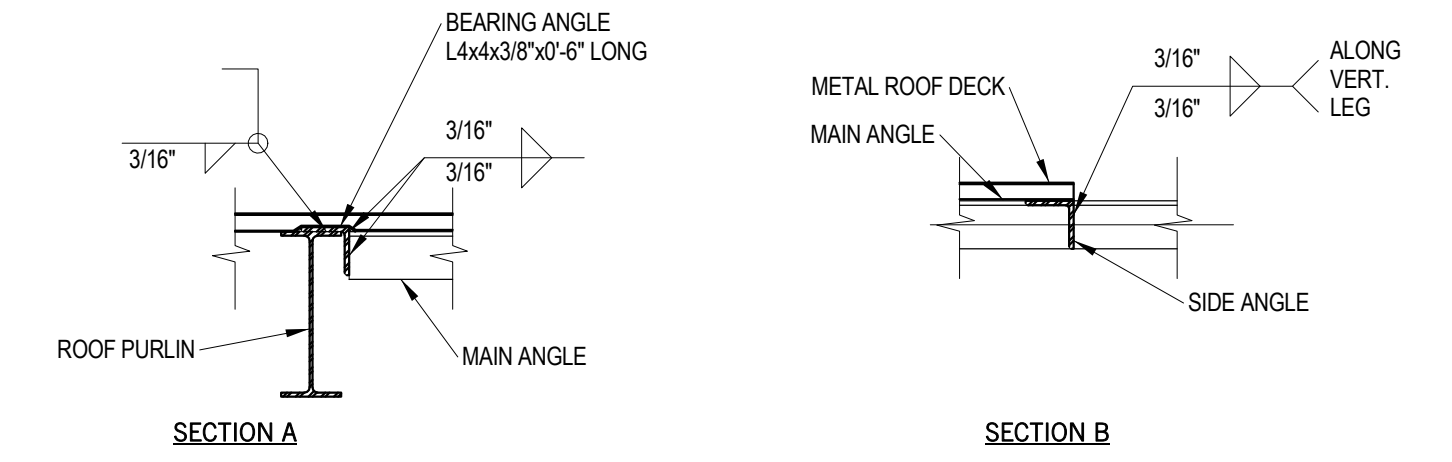
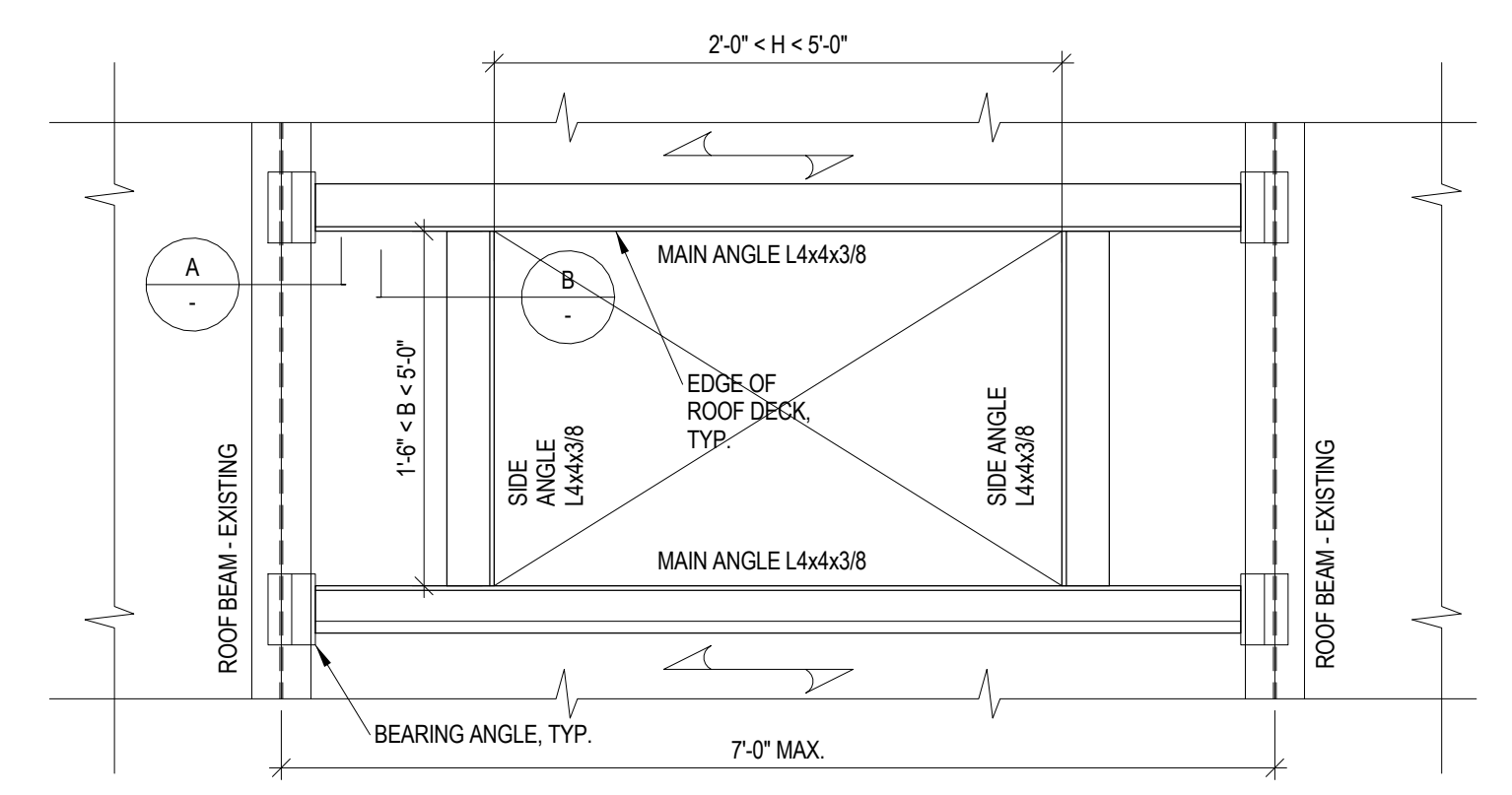
PARAMETERS FOR DECK CUT			
DEPTH OF DECK	DECK GAUGE	REINFORCING SHEET THICKNESS	MAX. CLEAR SPAN OF DECK
1 1/2'	20	13 GA.	5'-0"
	18	12 GA.	6'-0"
	16	12 GA.	7'-0"
3'	20	12 GA.	7'-0"
	18	1/8" or 10 GA.	8'-0"
	16	1/8" or 10 GA.	9'-0"

NOTE: NO REINFORCEMENT NEEDED WHERE 'L' IS 6 INCHES OR LESS FOR OPENINGS UP TO 1'-6" PERPENDICULAR TO DECK

- NOTES:
1. L EDGE = 1'-0" MIN.
  2. DETAIL DOES NOT APPLY TO OPENINGS SHOWN ON PLAN WITH STEEL SUBFRAMING.
  3. FOR OPENINGS CUT IN THE FIELD, NOT SHOWN ON PLAN, AND EXCEEDING THE MAXIMUM SPAN LIMITS, ADD SUBFRAMING PER TYPICAL FLOOR OPENING DETAILS. DETAIL APPLIES TO OPENINGS SPACED NO CLOSER THAN 5'-0" CLEAR IN DIRECTION TRANSVERSE TO DECK RIBS AND NO CLOSER THAN 10'-0" CLEAR IN DIRECTION PARALLEL TO RIBS. REVIEW SPECIFIC CONDITIONS WITH SER THAT MIGHT ALLOW MODIFICATIONS TO THE SPECIFIED PARAMETERS OF THE DETAIL.

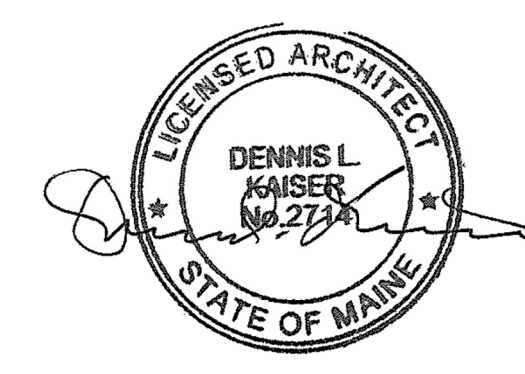
ROOF DECK OPENING REINFORCEMENT

**A2** ROOF DECK OPENING REINFORCEMENT  
3/4\"/>



- NOTES:
1. ADVISE SER IF OPENING EXCEEDS DIMENSION LIMITS SHOWN.
  2. ROOF DECK MUST BE FASTENED TO SUBFRAMING ANGLES AS SHOWN IN TS-28.
  3. TOPS OF MAIN AND SIDE ANGLES ARE FLUSH WITH TOP OF ROOF STEEL.
  4. SUBFRAMING IS DESIGNED FOR EQUIVALENT 100 PSF LIVE LOAD AND NET 30 PSF WIND SUCTION.
  5. CONTRACTOR MAY ELECT TO OMIT BEARING ANGLES AND OPE VERTICAL LEG OF MAIN ANGLES SUCH THAT THEY BEAR AT LEAST 4" ON TOP FLANGE OF ROOF BEAMS.
  6. CONTRACTOR MAY ELECT TO FABRICATE ANGLE FRAMES IN FIELD.

SUBFRAMING FOR ROOF OPENING LARGER THAN 2'-0" x 1'-6"



Revisions

ISSUED FOR PERMIT NO.	09.15.16
ISSUE DATE	09.15.16
<b>Sheet Information</b>	
Date	September 15, 2016
Job Number	1521XX-XXXX
Drawn	Author
Checked	Checker
Approved	Approver

**ROOF PENETRATION AND SUPPORT DETAILS**

Sheet  
**A11-50**