



225 Franklin Street, Suite 1100
Boston, MA 02110
1 617 478 0200
1 617 478 0221
www.perkinswill.com

CONSULTANTS

AKF GROUP LLC
99 Bedford St., 2nd Floor
Boston, MA 02111
1 617 737 1111
1 617 737 4311

**STRUCTURAL
SGH INC.**
41 Seyon St.
Waltham, MA 02453
1 781 907 9000
1 781 907 9009

PROJECT

**ACCU
RELOCATION**
22 Bramhall Street
Portland, Maine 04102



**MAINE MEDICAL
CENTER**
22 Bramhall Street
Portland, Maine 04102

ISSUED FOR BID

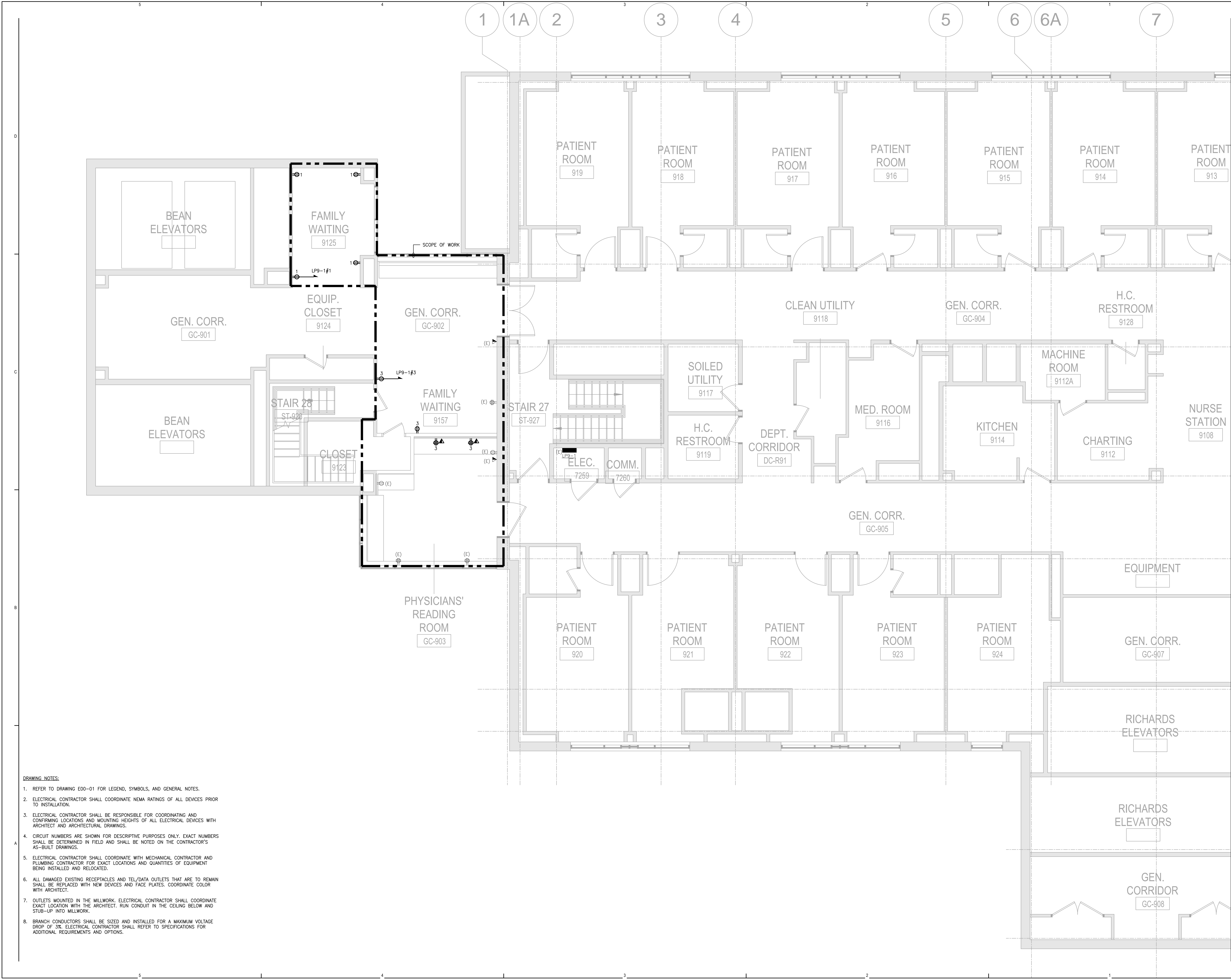
NO.	ISSUE	DATE
1	ISSUED FOR BID	07.29.2016
2	ISSUED FOR PERMIT	06.24.2016

ISSUE CHART

Job Number	B160089-000
Checked	MFR
Approved	

TITLE
**RICHARDS 9 -
ELECTRICAL
POWER
PLAN - WEST**
SHEET NUMBER
E04-04

Scale 1/4"=1'-0"



- DRAWING NOTES:**
- REFER TO DRAWING E00-01 FOR LEGEND, SYMBOLS, AND GENERAL NOTES.
 - ELECTRICAL CONTRACTOR SHALL COORDINATE NEMA RATINGS OF ALL DEVICES PRIOR TO INSTALLATION.
 - ELECTRICAL CONTRACTOR SHALL BE RESPONSIBLE FOR COORDINATING AND CONFIRMING LOCATIONS AND MOUNTING HEIGHTS OF ALL ELECTRICAL DEVICES WITH ARCHITECT AND ARCHITECTURAL DRAWINGS.
 - CIRCUIT NUMBERS ARE SHOWN FOR DESCRIPTIVE PURPOSES ONLY. EXACT NUMBERS SHALL BE DETERMINED IN FIELD AND SHALL BE NOTED ON THE CONTRACTOR'S AS-BUILT DRAWINGS.
 - ELECTRICAL CONTRACTOR SHALL COORDINATE WITH MECHANICAL CONTRACTOR AND PLUMBING CONTRACTOR FOR EXACT LOCATIONS AND QUANTITIES OF EQUIPMENT BEING INSTALLED AND RELOCATED.
 - ALL DAMAGED EXISTING RECEPTACLES AND TEL/DATA OUTLETS THAT ARE TO REMAIN SHALL BE REPLACED WITH NEW DEVICES AND FACE PLATES. COORDINATE COLOR WITH ARCHITECT.
 - OUTLETS MOUNTED IN THE MILLWORK. ELECTRICAL CONTRACTOR SHALL COORDINATE EXACT LOCATION WITH THE ARCHITECT. RUN CONDUIT IN THE CEILING BELOW AND STUB-UP INTO MILLWORK.
 - BRANCH CONDUCTORS SHALL BE SIZED AND INSTALLED FOR A MAXIMUM VOLTAGE DROP OF 3%. ELECTRICAL CONTRACTOR SHALL REFER TO SPECIFICATIONS FOR ADDITIONAL REQUIREMENTS AND OPTIONS.

LOGIN: Roy, Adam
 PLOT DATE: 7/29/2016 9:45 AM
 SAVE DATE: 7/29/2016 3:31 PM
 PL: Project\B1600089\B160089-000\Design\Main\CD\Richards 9 - Richards\B160089-000_E04-04_Elec-05.dwg