



225 Franklin Street, Suite 1100  
Boston, MA 02110  
1617.478.0300  
1617.478.0321  
www.perkinswill.com

**CONSULTANTS**

**MEPP**  
**AKF GROUP LLC**  
99 Bedford St., 2nd Floor  
Boston, MA 02111  
1617.737.1111  
1617.737.4311

**STRUCTURAL**  
**SGH INC.**  
41 Seyon St.  
Waltham, MA 02453  
1781.907.9000  
1781.907.9009

**PROJECT**

**ACCU RELOCATION**  
22 Bramhall Street  
Portland, Maine 04102



**MAINE MEDICAL CENTER**  
22 Bramhall Street  
Portland, Maine 04102

**ISSUED FOR BID**

07.29.2016  
**ISSUE CHART**

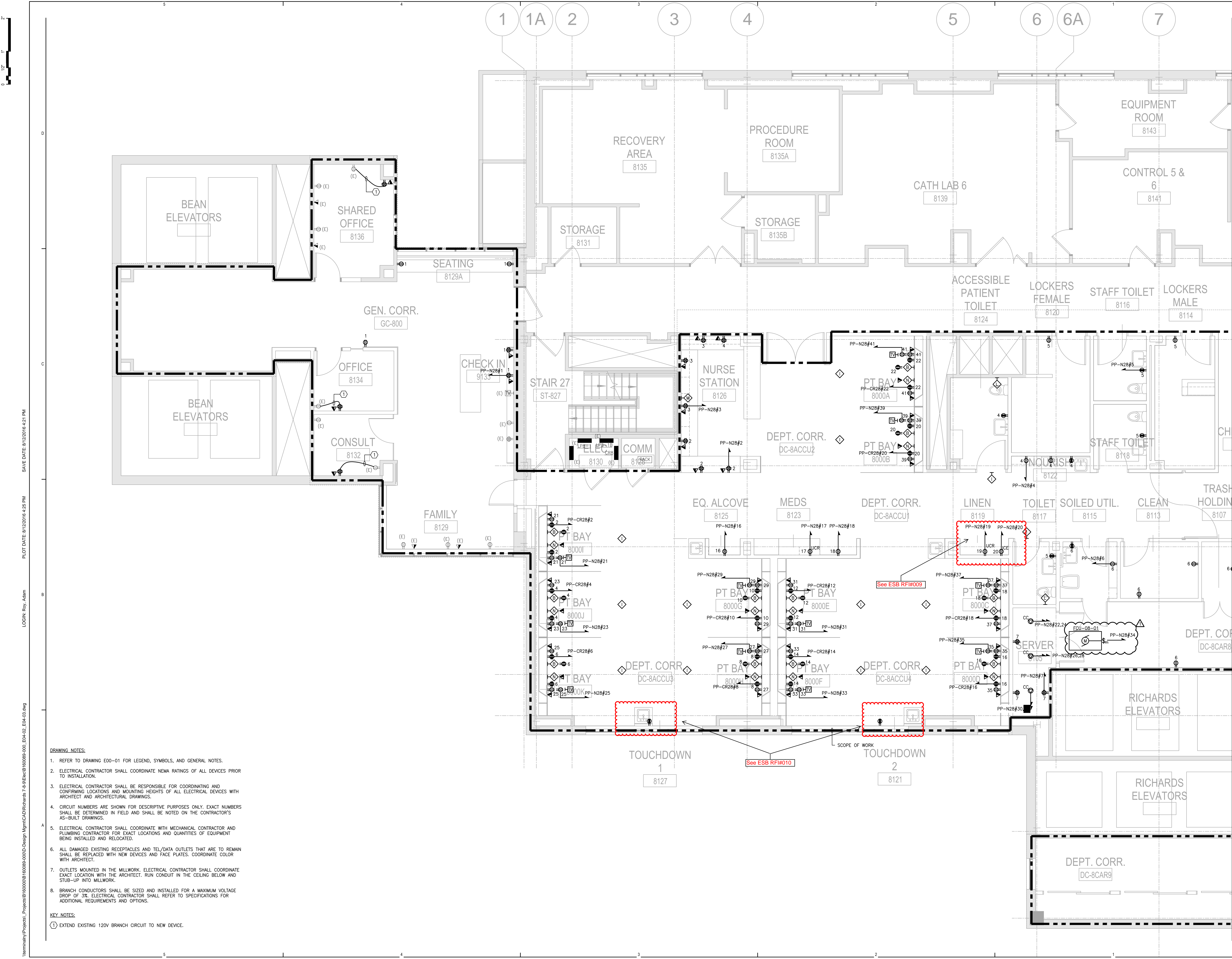
NO	ISSUE	DATE
1	ISSUED FOR BID	07.29.2016
	ISSUED FOR PERMIT	06.24.2016

Job Number: B160089-000  
Checked: MFR  
Approved:

**TITLE**  
**RICHARDS 8 - ELECTRICAL POWER PLAN - WEST**  
**SHEET NUMBER**

**E04-02**

Scale: 1/4"=1'-0"



- DRAWING NOTES:**
- REFER TO DRAWING E00-01 FOR LEGEND, SYMBOLS, AND GENERAL NOTES.
  - ELECTRICAL CONTRACTOR SHALL COORDINATE NEMA RATINGS OF ALL DEVICES PRIOR TO INSTALLATION.
  - ELECTRICAL CONTRACTOR SHALL BE RESPONSIBLE FOR COORDINATING AND CONFIRMING LOCATIONS AND MOUNTING HEIGHTS OF ALL ELECTRICAL DEVICES WITH ARCHITECT AND ARCHITECTURAL DRAWINGS.
  - CIRCUIT NUMBERS ARE SHOWN FOR DESCRIPTIVE PURPOSES ONLY. EXACT NUMBERS SHALL BE DETERMINED IN FIELD AND SHALL BE NOTED ON THE CONTRACTOR'S AS-BUILT DRAWINGS.
  - ELECTRICAL CONTRACTOR SHALL COORDINATE WITH MECHANICAL CONTRACTOR AND PLUMBING CONTRACTOR FOR EXACT LOCATIONS AND QUANTITIES OF EQUIPMENT BEING INSTALLED AND RELOCATED.
  - ALL DAMAGED EXISTING RECEPTACLES AND TEL/DATA OUTLETS THAT ARE TO REMAIN SHALL BE REPLACED WITH NEW DEVICES AND FACE PLATES. COORDINATE COLOR WITH ARCHITECT.
  - OUTLETS MOUNTED IN THE MILLWORK. ELECTRICAL CONTRACTOR SHALL COORDINATE EXACT LOCATION WITH THE ARCHITECT. RUN CONDUIT IN THE CEILING BELOW AND STUB-UP INTO MILLWORK.
  - BRANCH CONDUCTORS SHALL BE SIZED AND INSTALLED FOR A MAXIMUM VOLTAGE DROP OF 3%. ELECTRICAL CONTRACTOR SHALL REFER TO SPECIFICATIONS FOR ADDITIONAL REQUIREMENTS AND OPTIONS.
- KEY NOTES:**
- ① EXTEND EXISTING 120V BRANCH CIRCUIT TO NEW DEVICE.

SAVE DATE: 8/12/2016 4:21 PM  
 PLOT DATE: 8/12/2016 4:25 PM  
 LOGIN: Roy, Adam  
 W:\main\Projects\Projects\B160089-000-Design\Main\CAD\Richards 7-9\Elec\B160089-000\_E04-02\_E04-02.dwg