



225 Franklin Street, Suite 1100
Boston, MA 02110
1 617 478 0200
1 617 478 0221
www.perkinswill.com

CONSULTANTS

AKF GROUP LLC
99 Bedford St., 2nd Floor
Boston, MA 02111
1 617 737 1111
1 617 737 4311

**STRUCTURAL
SGH INC.**
41 Seyon St.
Waltham, MA 02453
1 781 907 9000
1 781 907 9009

PROJECT

**ACCU
RELOCATION**
22 Bramhall Street
Portland, Maine 04102



**MAINE MEDICAL
CENTER**
22 Bramhall Street
Portland, Maine 04102

ISSUED FOR BID

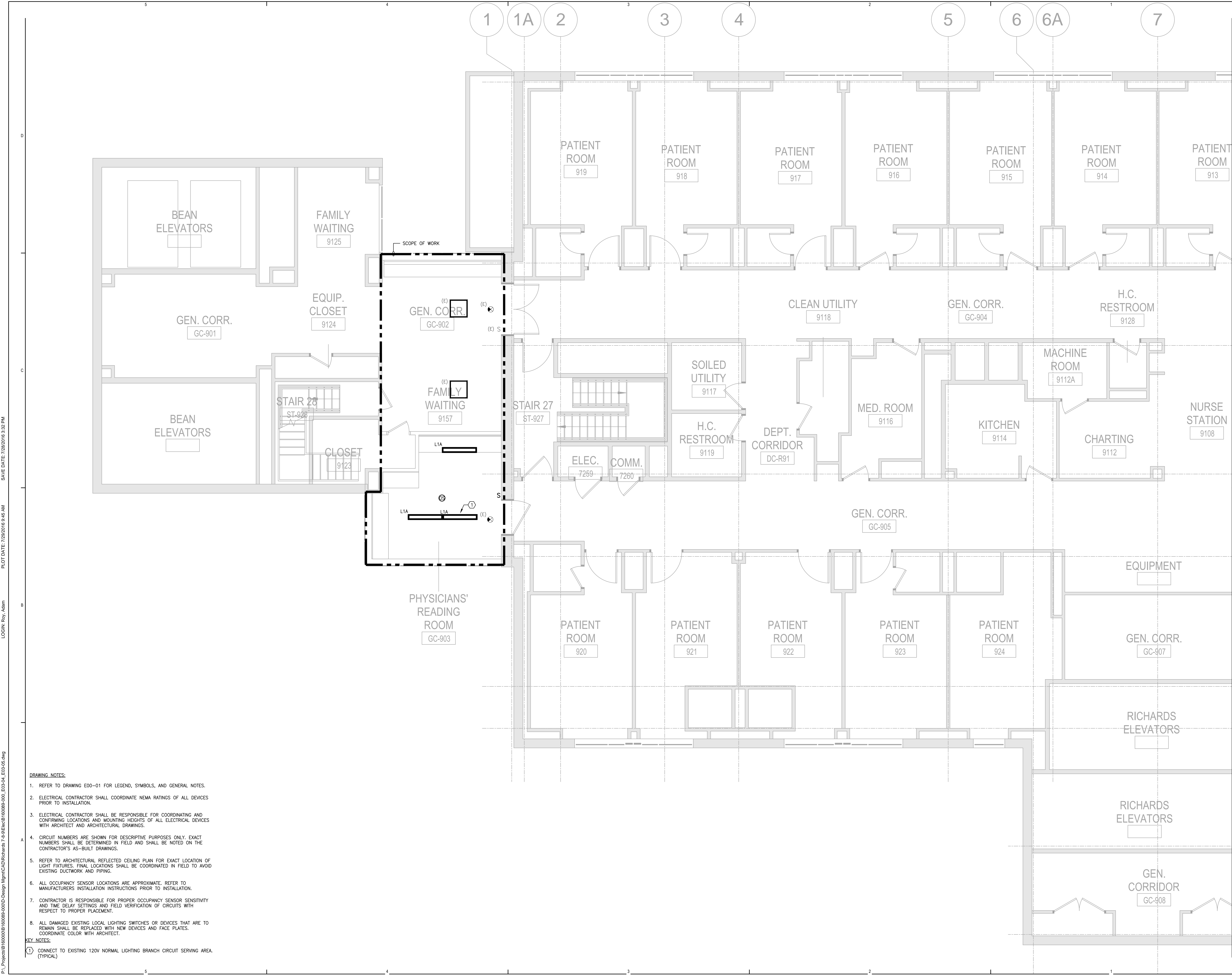
07.29.2016
ISSUE CHART

NO.	ISSUE	DATE
1	ISSUED FOR BID	07.29.2016
2	ISSUED FOR PERMIT	06.24.2016
3	Job Number	B160089-000
4	Checked	MFR
5	Approved	

TITLE
**RICHARDS 9 -
ELECTRICAL
PLAN - WEST**
SHEET NUMBER

E03-04

Scale 1/4"=1'-0"



- DRAWING NOTES:**
- REFER TO DRAWING E00-01 FOR LEGEND, SYMBOLS, AND GENERAL NOTES.
 - ELECTRICAL CONTRACTOR SHALL COORDINATE NEMA RATINGS OF ALL DEVICES PRIOR TO INSTALLATION.
 - ELECTRICAL CONTRACTOR SHALL BE RESPONSIBLE FOR COORDINATING AND CONFIRMING LOCATIONS AND MOUNTING HEIGHTS OF ALL ELECTRICAL DEVICES WITH ARCHITECT AND ARCHITECTURAL DRAWINGS.
 - CIRCUIT NUMBERS ARE SHOWN FOR DESCRIPTIVE PURPOSES ONLY. EXACT NUMBERS SHALL BE DETERMINED IN FIELD AND SHALL BE NOTED ON THE CONTRACTOR'S AS-BUILT DRAWINGS.
 - REFER TO ARCHITECTURAL REFLECTED CEILING PLAN FOR EXACT LOCATION OF LIGHT FIXTURES. FINAL LOCATIONS SHALL BE COORDINATED IN FIELD TO AVOID EXISTING DUCTWORK AND PIPING.
 - ALL OCCUPANCY SENSOR LOCATIONS ARE APPROXIMATE. REFER TO MANUFACTURERS INSTALLATION INSTRUCTIONS PRIOR TO INSTALLATION.
 - CONTRACTOR IS RESPONSIBLE FOR PROPER OCCUPANCY SENSOR SENSITIVITY AND TIME DELAY SETTINGS AND FIELD VERIFICATION OF CIRCUITS WITH RESPECT TO PROPER PLACEMENT.
 - ALL DAMAGED EXISTING LOCAL LIGHTING SWITCHES OR DEVICES THAT ARE TO REMAIN SHALL BE REPLACED WITH NEW DEVICES AND FACE PLATES. COORDINATE COLOR WITH ARCHITECT.
- KEY NOTES:**
- CONNECT TO EXISTING 120V NORMAL LIGHTING BRANCH CIRCUIT SERVING AREA. (TYPICAL)

LOGIN: Roy, Adam
 PLOT DATE: 7/29/2016 9:45 AM
 SAVE DATE: 7/29/2016 3:32 PM
 PL:\Projects\B1600089\B1600089-000\Design\Main\CAD\Richards 7-9\Richards 9-03-04_Elec-03.dwg