



225 Franklin Street, Suite 1100
Boston, MA 02110
1617-478-0300
1617-478-0321
www.perkinswill.com

CONSULTANTS

AKF GROUP LLC
MEPP
99 Bedford St., 2nd Floor
Boston, MA 02111
1617-737-1111
1617-737-4311

**STRUCTURAL
SGH INC.**
41 Seyon St.
Waltham, MA 02453
1781-907-8000
1781-907-9009

PROJECT

**ACCU
RELOCATION**
22 Bramhall Street
Portland, Maine 04102



**MAINE MEDICAL
CENTER**
22 Bramhall Street
Portland, Maine 04102

ISSUED FOR BID

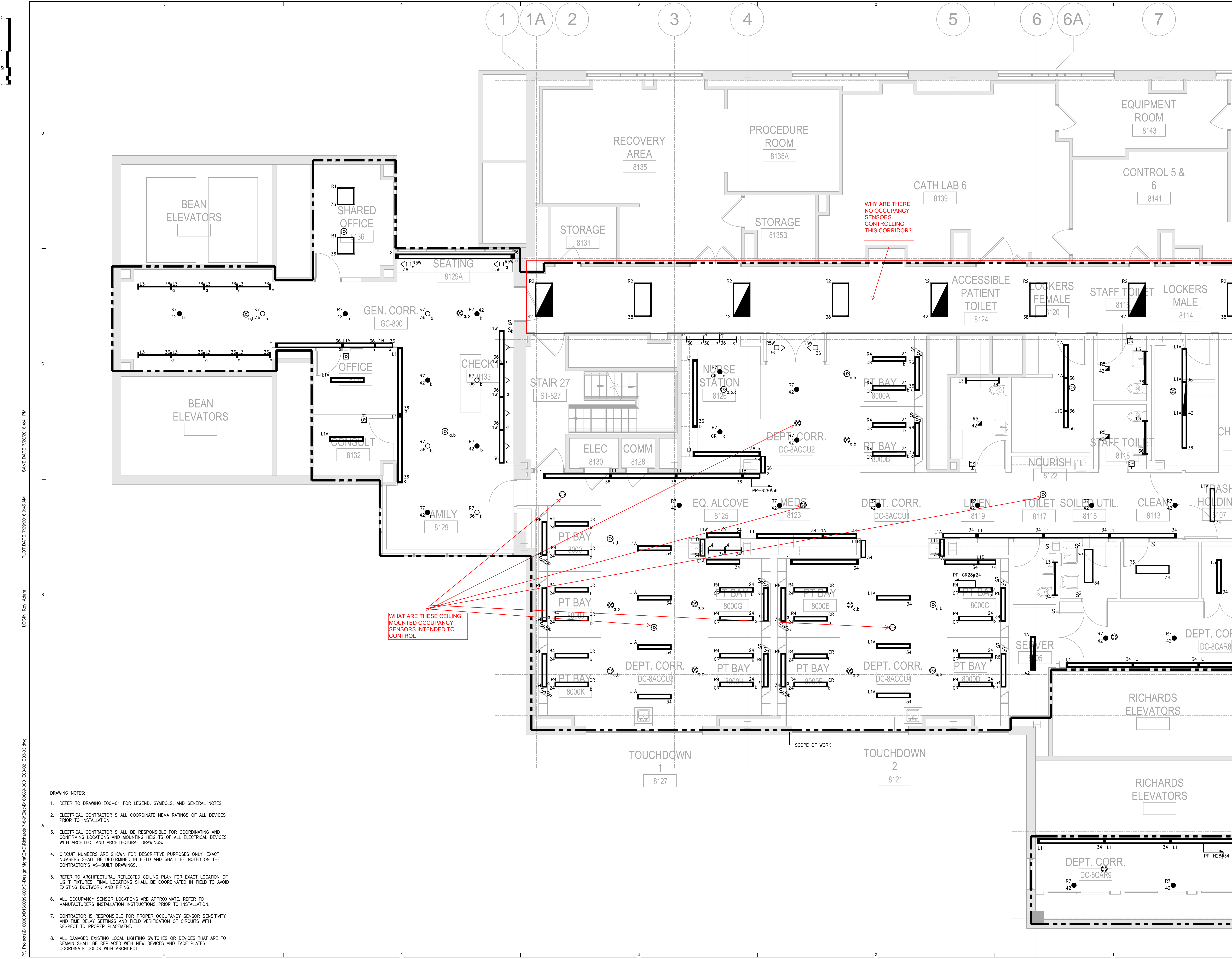
07.29.2016
ISSUE CHART

NO.	ISSUE	DATE
1	ISSUED FOR BID	07.29.2016
2	ISSUED FOR PERMIT	06.24.2016
3		
4		
5		
6		
7		
8		
9		
10		
11		
12		
13		
14		
15		
16		
17		
18		
19		
20		
21		
22		
23		
24		
25		
26		
27		
28		
29		
30		
31		
32		
33		
34		
35		
36		
37		
38		
39		
40		
41		
42		
43		
44		
45		
46		
47		
48		
49		
50		

TITLE
**RICHARDS 8 -
ELECTRICAL
PLAN - WEST**
SHEET NUMBER

E03-02

Scale 1/4"=1'-0"



- DRAWING NOTES:**
- REFER TO DRAWING E00-01 FOR LEGEND, SYMBOLS, AND GENERAL NOTES.
 - ELECTRICAL CONTRACTOR SHALL COORDINATE NEMA RATINGS OF ALL DEVICES PRIOR TO INSTALLATION.
 - ELECTRICAL CONTRACTOR SHALL BE RESPONSIBLE FOR COORDINATING AND CONFIRMING LOCATIONS AND MOUNTING HEIGHTS OF ALL ELECTRICAL DEVICES WITH ARCHITECT AND ARCHITECTURAL DRAWINGS.
 - CIRCUIT NUMBERS ARE SHOWN FOR DESCRIPTIVE PURPOSES ONLY. EXACT NUMBERS SHALL BE DETERMINED IN FIELD AND SHALL BE NOTED ON THE CONTRACTOR'S AS-BUILT DRAWINGS.
 - REFER TO ARCHITECTURAL REFLECTED CEILING PLAN FOR EXACT LOCATION OF LIGHT FIXTURES. FINAL LOCATIONS SHALL BE COORDINATED IN FIELD TO AVOID EXISTING DUCTWORK AND PIPING.
 - ALL OCCUPANCY SENSOR LOCATIONS ARE APPROXIMATE. REFER TO MANUFACTURERS INSTALLATION INSTRUCTIONS PRIOR TO INSTALLATION.
 - CONTRACTOR IS RESPONSIBLE FOR PROPER OCCUPANCY SENSOR SENSITIVITY AND TIME DELAY SETTINGS AND FIELD VERIFICATION OF CIRCUITS WITH RESPECT TO PROPER PLACEMENT.
 - ALL DAMAGED EXISTING LOCAL LIGHTING SWITCHES OR DEVICES THAT ARE TO REMAIN SHALL BE REPLACED WITH NEW DEVICES AND FACE PLATES. COORDINATE COLOR WITH ARCHITECT.

SAVE DATE: 7/29/2016 4:41 PM
 PLOT DATE: 7/29/2016 9:45 AM
 LOGIN: Roy, Adam
 PL: Projects\B1600089\B1600089-000-EG-03-02.dwg