

FIRE ALARM SYMBOL LIST

CONTROL UNITS (PANELS) SYMBOLS

- FIRE ALARM CONTROL PANEL
- NOTIFICATION CIRCUIT POWER BOOSTER PANEL

NOTIFICATION APPLIANCES SYMBOLS

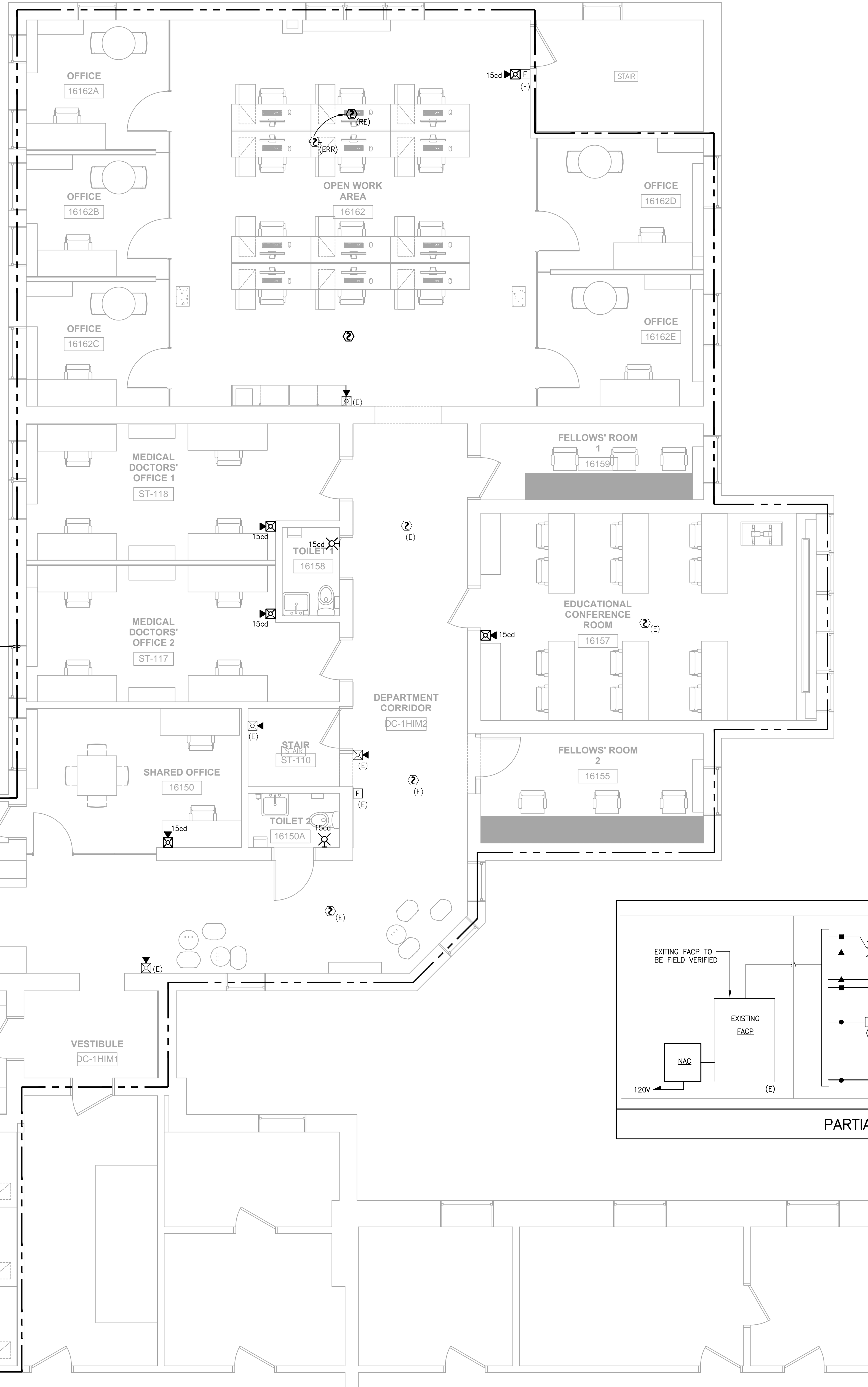
- VISIBLE ONLY (STROBE) - WALL MOUNT
- COMBINATION AUDIO/VISIBLE - WALL MOUNT

SIGNAL INITIATING DEVICES & ACTION SWITCHES SYMBOLS

- MANUAL PULL STATION
- SMOKE DETECTOR/SENSOR
- ADDRESSABLE INPUT MODULE
- ADDRESSABLE OUTPUT MODULE
- ADDRESSABLE INPUT/OUTPUT MODULE

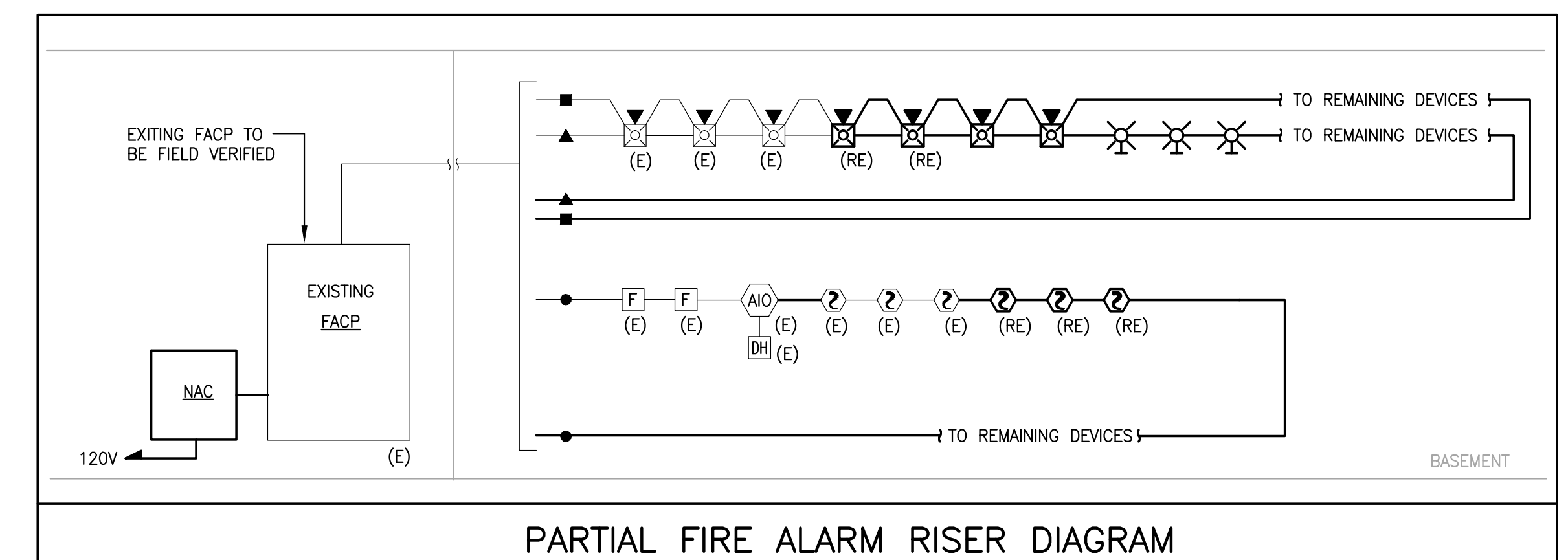
RELATED EQUIPMENT

- DOOR HOLDER
- RELAY



FIRE ALARM GENERAL NOTES

1. ALL FIRE ALARM SYSTEM RACEWAY SIZES AND CIRCUITRY REQUIREMENTS SHALL BE INSTALLED IN ACCORDANCE WITH EQUIPMENT MANUFACTURERS WIRING DIAGRAM, SHOP DRAWINGS AND ALL CODES THAT MAY APPLY.
2. REFER TO FLOOR PLAN FOR EXACT LOCATIONS AND QUANTITIES OF ALL DEVICES.
3. EXTEND CIRCUITRY TO ADDITIONAL DEVICES AS INDICATED ON FLOOR PLANS.
4. ALL SHIELDS ON ADDRESSABLE SIGNAL CIRCUITS AND AUDIO CIRCUITS SHALL BE COVERED WITH HEAT SHRINK TUBING BEFORE TERMINATION.
5. ELECTRICAL CONTRACTOR SHALL CONNECT NEW DEVICES TO AN EXISTING LOOP SERVING AREA. PROVIDE AN ADDITIONAL LOOP IF SPARE CAPACITY IS NOT AVAILABLE IN EXISTING LOOP SERVING AREA.
6. PROVIDE ALL FILING, PERMIT & FIRE DEPARTMENT INSPECTION FEES.
7. ELECTRICAL CONTRACTOR SHALL CONNECT NEW FIRE ALARM DEVICES TO THE EXISTING BASE BUILDING FIRE ALARM SYSTEM. REPROGRAM EXISTING FIRE SYSTEM AND PROVIDE POWER SUPPLIES, SIGNAL MODULES, AMPLIFIERS ETC. AS REQUIRED TO ACCOMMODATE ADDITIONS. COORDINATE WITH BUILDING FIRE ALARM VENDOR PRIOR TO SUBMITTING BID TO ENSURE SCOPE IS FULLY COVERED. INSTALLATION SHALL CONFORM TO BUILDING STANDARDS. THE ELECTRICAL CONTRACTOR SHALL PROVIDE ALL NECESSARY EQUIPMENT, FINAL CONNECTIONS, PROGRAMMING AND PERFORM ALL TESTING.
8. ALL 120V CIRCUITS FOR THE FIRE ALARM SYSTEM SHALL BE DEDICATED EMERGENCY CIRCUITS. PROVIDE LOCKABLE CIRCUIT.
9. ALL FIRE ALARM WIRING SHALL BE INSTALLED IN CONDUIT. WIRING TO BE INSTALLED CONCEALED IN CEILING OR WALLS SHALL BE PERMITTED TO BE TYPE MC FIRE ALARM CABLE.
10. PROVIDE CONDUIT WITH WIRING FROM EXISTING FIRE ALARM CONTROL PANEL TO SECURITY CONTROL PANEL FOR OVERRIDE TO ENSURE THAT ALL DOORS UNLOCK WHEN SYSTEM IS IN ALARM. COORDINATE WITH SECURITY CONTRACTOR.
11. SYNCHRONIZE ALL STROBES AT END OF CONSTRUCTION. REPLACE EXISTING HORN/STROBE OR STROBE AS NEEDED.
12. ELECTRICAL CONTRACTOR SHALL BE TESTED ALL EXISTING FIRE ALARM DEVICES TO REMAIN OR RELOCATED IN THIS SPACE. REPAIR OR PLACE DEFECTED FIRE ALARM DEVICES AS NEEDED.
13. FURNISH AND INSTALL ALL EQUIPMENT REQUIRED FOR THE FIRE ALARM SYSTEM TO BE INTERCONNECTED WITH THE FOLLOWING SYSTEM:
 - 13.a THE SECURITY SYSTEM TO UNLOCK ALL DOORS IN THE EGRESS PATH UPON AN ALARM SIGNAL.
 - 13.b THE SOUND SYSTEMS TO BE MUTED UPON AN ALARM SIGNAL.
14. SUBMIT PLANS TO THE LOCAL FIRE DEPARTMENT TO OBTAIN PERMITS FOR MODIFICATIONS TO EXISTING SYSTEM. CERTIFY THAT THE SYSTEM HAS BEEN TESTED BY THE INSTALLER AND SUBMIT CERTIFICATION TO THE LOCAL FIRE DEPARTMENT PRIOR TO THE FIRE DEPARTMENT FINAL INSPECTION.



FIRE ALARM RISER LEGEND:

- CLASS "A" ADDRESSABLE SIGNAL CIRCUIT
- CLASS "A" AUDIO EVAC. CIRCUITS
- CLASS "A" STROBE/HANDICAP LIGHT
- INDICATES CONTINUATION OF WIRING TYPE

FIRE ALARM DRAWING INDEX	
DRAWING NO.	DRAWING TITLE
FA-000	FIRE ALARM COVER SHEET AND FLOOR PLAN



CONSULTANTS
AKF GROUP LLC
 99 Bedford St., 2nd Floor
 Boston, MA 02111
 1617.737.1111
 1617.737.4311

PROJECT
ACCU RELOCATION
 22 Bramhall Street
 Portland, Maine 04102



MAINE MEDICAL CENTER
 22 Bramhall Street
 Portland, Maine 04102

ISSUED FOR CONSTRUCTION
 05/02/2016
ISSUE CHART

NO.	ISSUE	DATE
1	Job Number	B160089-000
2	Checked	
3	Approved	

TITLE
FIRE ALARM COVER SHEET AND FLOOR PLAN

SHEET NUMBER
FA-000

SAVE DATE: 5/2/2016 5:50 PM
 PLOT DATE: 5/2/2016 6:18 PM
 LOGIN: Roy, Adam
 PL: Project\B1600089\B1600089-000\Design\Main\CADD\FAB160089-000_FA-100.dwg