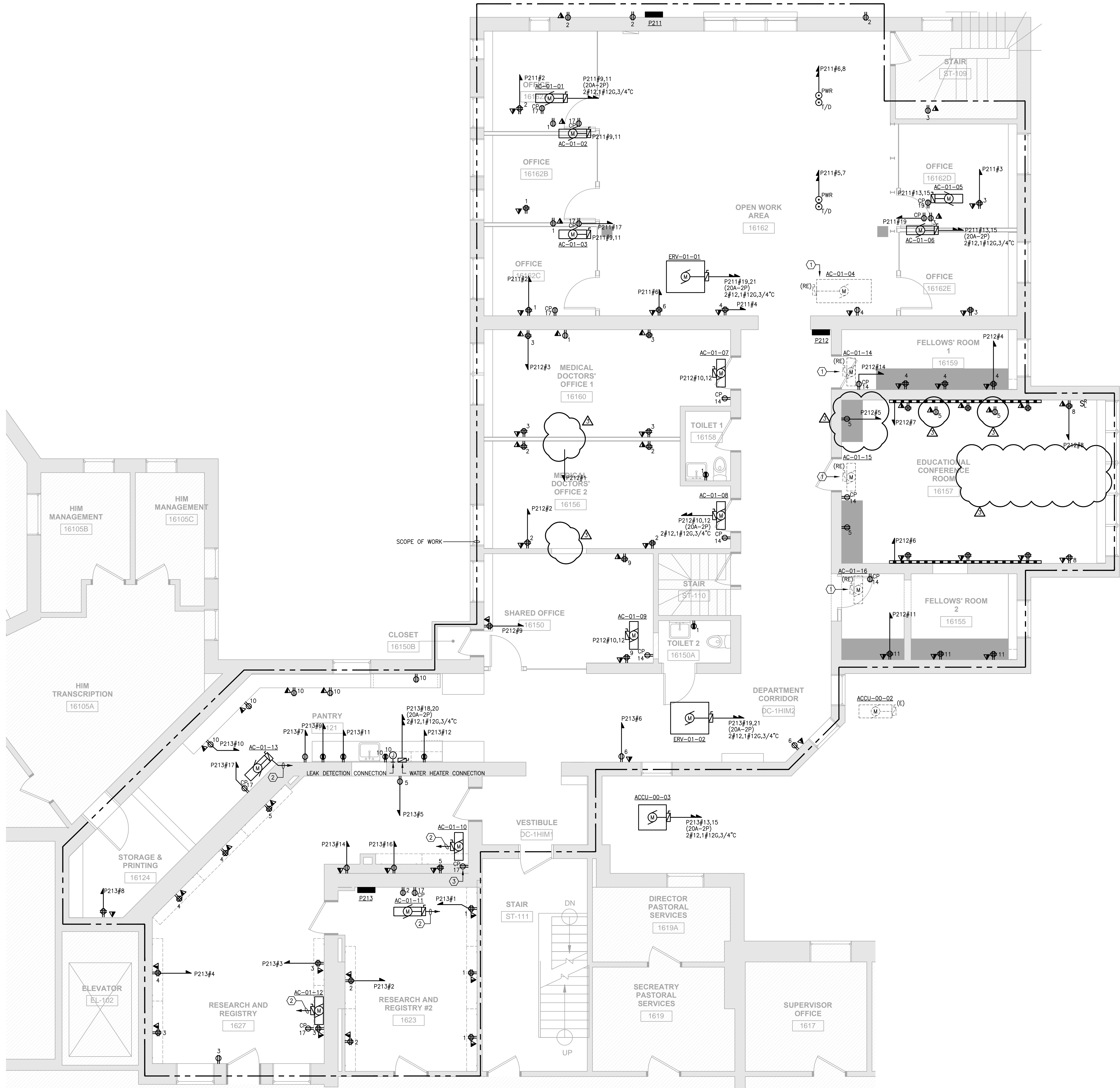


SAVE DATE: 6/29/2016 6:04 PM
PLOT DATE: 6/29/2016 6:04 PM
LOGIN: Roy, Adam
M:\main\shy\Projects\160089-000-DD-Design\Main\CADD\ELEC\160089-000_E-300.dwg



DRAWING NOTES:

- REFER TO DRAWINGS E-000, E-500 AND E-501 FOR LEGEND, SYMBOLS, GENERAL NOTES AND SPECIFICATIONS.
- ELECTRICAL CONTRACTOR SHALL COORDINATE NEMA RATINGS OF ALL DEVICES PRIOR TO INSTALLATION.
- ELECTRICAL CONTRACTOR SHALL BE RESPONSIBLE FOR COORDINATING AND CONFIRMING LOCATIONS AND MOUNTING HEIGHTS OF ALL ELECTRICAL DEVICES WITH ARCHITECT AND ARCHITECTURAL DRAWINGS.
- CIRCUIT NUMBERS ARE SHOWN FOR DESCRIPTIVE PURPOSES ONLY. EXACT NUMBERS SHALL BE DETERMINED IN FIELD AND SHALL BE NOTED ON THE CONTRACTOR'S AS-BUILT DRAWINGS.
- BRANCH CONDUCTORS SHALL BE SIZED AND INSTALLED FOR A MAXIMUM VOLTAGE DROP OF 3%. ELECTRICAL CONTRACTOR SHALL REFER TO SPECIFICATIONS FOR ADDITIONAL REQUIREMENTS AND OPTIONS.
- ELECTRICAL CONTRACTOR SHALL COORDINATE WITH TEL/DATA, SECURITY SYSTEM AND A/V SYSTEM VENDOR/CONTRACTORS TO PROVIDE INFRASTRUCTURE (EMPTY CONDUITS, BACKBOXES, ETC. ONLY) FOR TEL/DATA, SECURITY SYSTEM AND A/V SYSTEM INSTALLATION. ELECTRICAL CONTRACTOR SHALL CARRY ALL COST FOR THESE WORKS IN HIS BASE BID.
- ELECTRICAL CONTRACTOR SHALL COORDINATE WITH MECHANICAL CONTRACTOR AND PLUMBING CONTRACTOR FOR EXACT LOCATIONS AND QUANTITIES OF EQUIPMENT BEING INSTALLED AND RELOCATED.
- ALL BRANCH CIRCUITS SERVING MODULAR FURNITURE SYSTEMS SHALL HAVE CIRCUIT BREAKER HANDLES TIED TOGETHER TO MEET NEC ARTICLES 605.7 & 210.4B (2014) TO SIMULTANEOUSLY DISCONNECT ALL CONDUCTORS.
- PROVIDE PANEL DIRECTORIES IN PROTECTIVE COVER AFFIXED TO PANEL INTERIOR DOOR.

KEY NOTES:

- EXTEND EXISTING WIRING/PROVISIONS FOR EXISTING EQUIPMENT TO NEW LOCATION.
- 2#12.1#126.3/4" TO ACCU-00-03.
- DUPLEX OUTLET MOUNTED ADJACENT TO AC UNIT FOR CONDENSATE PUMP CONNECTION. COORDINATE EXACT LOCATION WITH MECHANICAL CONTRACTOR (TYPICAL).



225 Franklin Street, Suite 1100
Boston, MA 02110
1617.478.0300
1617.478.0321
www.perkinswill.com

CONSULTANTS
AKF GROUP LLC
99 Bedford St., 2nd Floor
Boston, MA 02111
1617.737.1111
1617.737.4311

PROJECT
ACCU RELOCATION
22 Bramhall Street
Portland, Maine 04102



MAINE MEDICAL CENTER
22 Bramhall Street
Portland, Maine 04102

ISSUED FOR CONSTRUCTION
05/02/2016
ISSUE CHART

NO	ISSUE	DATE
3	ISSUE	6/29/2016
2	ADDENDUM 1	5/9/2016
1	ISSUED FOR BID	5/3/2016
NO	ISSUE	DATE
Job Number	B160089-000	
Checked		
Approved		

TITLE
ELECTRICAL FLOOR PLAN - POWER

SHEET NUMBER
E-300