

MMC - PICU

Maine Medical Center

22 Bramhall Street, Portland, ME 04102

MEP ENGINEER

AKF ENGINEERS

41 Farnsworth Street, 3rd Floor
Boston, MA 02210
1517.737.1111
1617.737.4311

REFLECTED CEILING PLAN LEGEND

- L1 LINEAR RECESSED
- L2 LINEAR WALL GRAZER
- L3 LINEAR WALL WASHER
- L4 LINEAR COVE
- UC UNDERCOUNTER 24"
- P3A DECORATIVE PENDANT (PURPLE)
- P3B DECORATIVE PENDANT (BLUE)
- P3C DECORATIVE PENDANT (YELLOW)
- P3D DECORATIVE PENDANT (RED)
- P3E DECORATIVE PENDANT (WHITE)
- R1 SQUARE DOWNLIGHT
- R10 SQUARE DOWNLIGHT
- R2 1X4 INDIRECT
- R3 SQUARE WALL WASHER
- R4D LINEAR ASYMMETRICAL BED LIGHT
- W1 FAMILY READING LIGHT
- W2 NIGHT LIGHT
- ACT 2x2 SUSPENDED ACOUSTICAL CEILING
- GWB CEILING
- 2x2 SUPPLY
- SUPPLY
- 2x2 RETURN
- RETURN
- RADIANT PANEL
- FIRE ALARM SPEAKER
- SMOKE DETECTOR
- SPRINKLER
- EXIT SIGN
- CURBLE PRIVACY CURTAIN TRACK
- IV TRACK
- WINDOW SHADE - DUAL ROLL

RCP GENERAL NOTES

1. REFER TO ELEVATIONS FOR MOUNTING HEIGHT FOR MOUNTING HEIGHT OF WALL SCONCES.
2. COORDINATE TEES AND HANGER LOCATIONS WITH LINEAR DIFFUSER/GRILLE BOOTHS.
3. SPRINKLER HEAD AND COVER TO BE COLORED BY MANUFACTURER TO MATCH ADJ. CEILING FINISH - COLOR TO BE DETERMINED BY ARCHITECT.
4. DIFFUSER GRILLE TO BE COLORED TO MATCH ADJACENT CEILING FINISH. COLOR TO BE DETERMINED BY ARCHITECT.
5. UNLESS OTHERWISE NOTED, CENTER ALL SUSPENDED CEILING GRIDS WITHIN ROOM.
6. CENTER ALL LIGHT FIXTURES, SPRINKLER HEADS, ETC. IN CEILING TILE UNLESS OTHERWISE NOTED.
7. SEE ENGINEERING DRAWINGS FOR ADDITIONAL INFORMATION, I.E. LIGHT FIXTURES, DIFFUSERS AND OTHER CEILING MOUNTED DEVICES.
8. COORDINATE CEILING MOUNTED EQUIPMENT FINAL LAYOUT WITH OWNER AND VENDOR INSTALLATION DRAWINGS.
9. PROVIDE UNDER-CABINET LIGHT AT ALL LOCATIONS WITH UPPER CABINETS.

Revisions

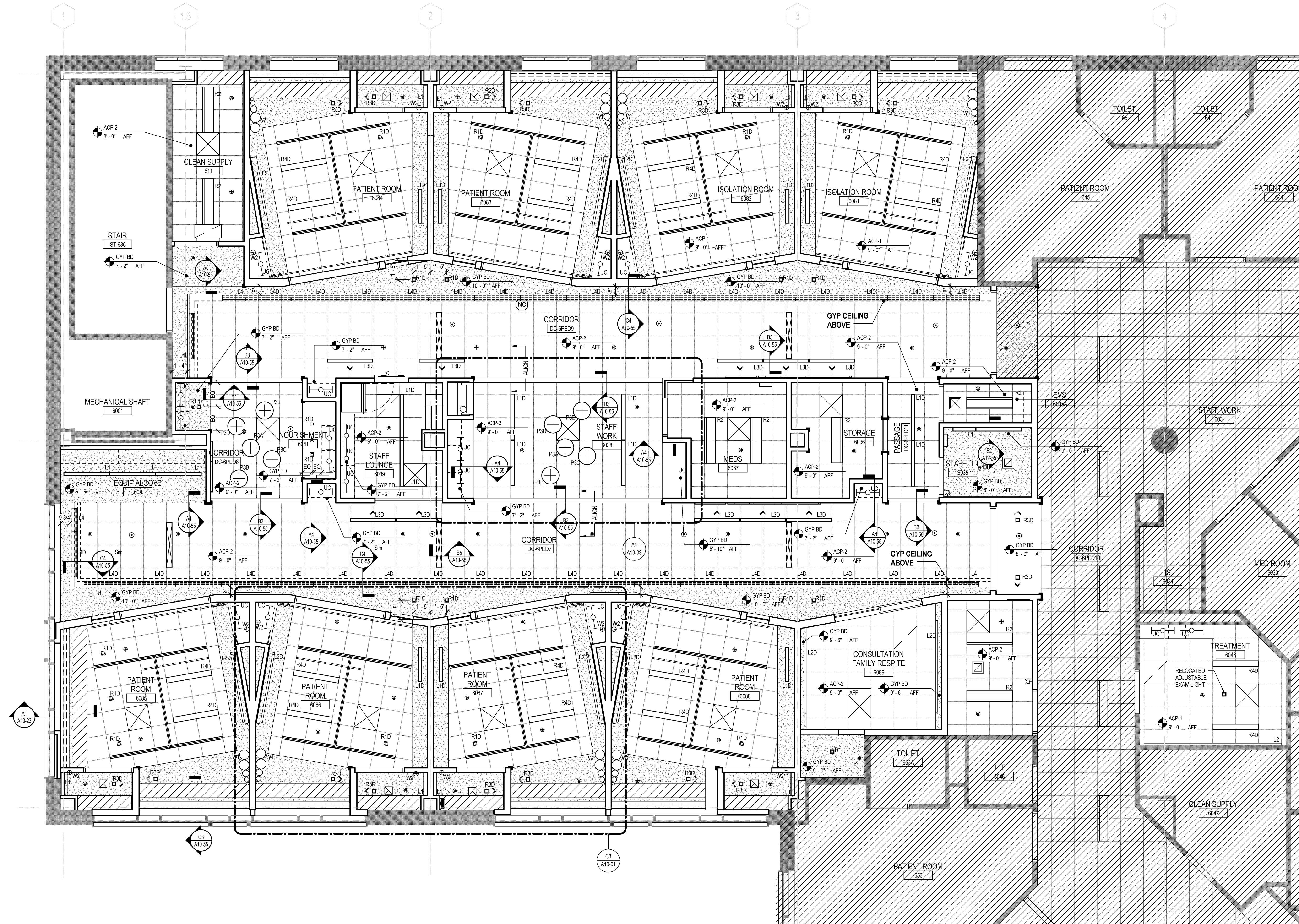
DRAFT - PROGRESS PRINT
NOT FOR CONSTRUCTION

| NO. | ISSUE | DATE |
|--------------------------|-------------|------|
| Sheet Information | | |
| Date | MAY 1, 2015 | |
| Job Number | 152168.009 | |
| Drawn | Author | |
| Checked | sc | |
| Approved | Approver | |
| Title | | |

**LEVEL 06 - PICU -
REFLECTED
CEILING PLAN**

Sheet

A05-06



1 LEVEL 6 PICU - REFLECTED CEILING PLAN
1/4" = 1'-0"