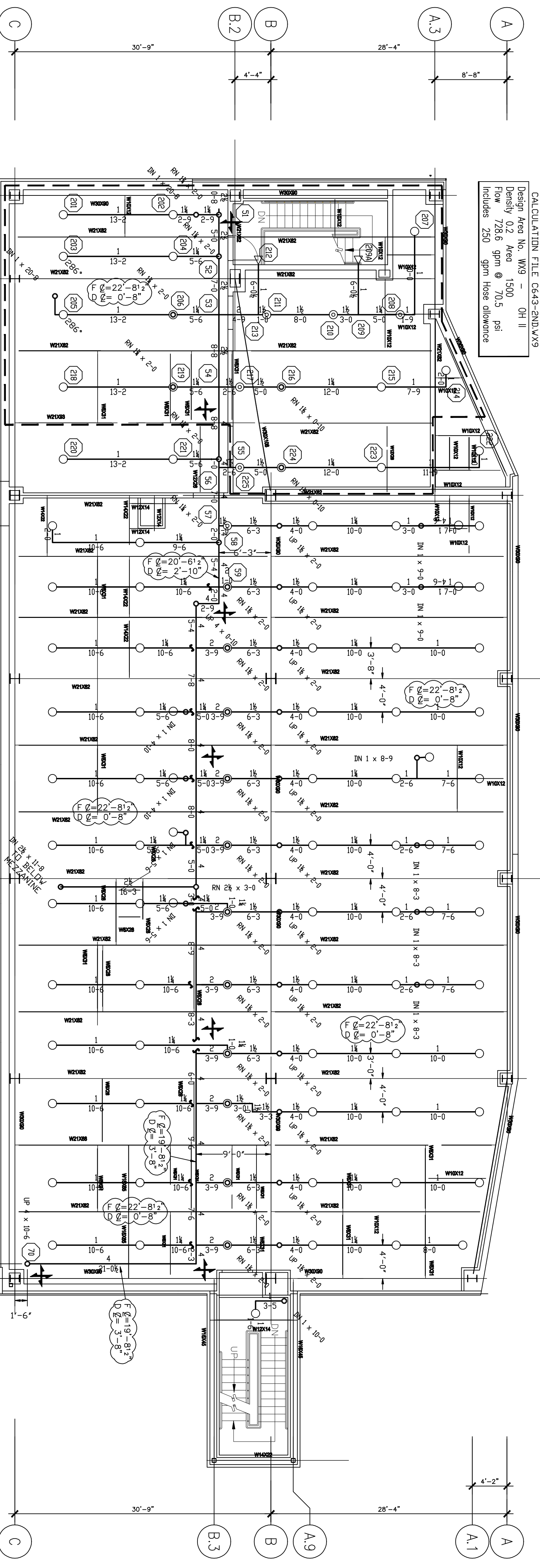


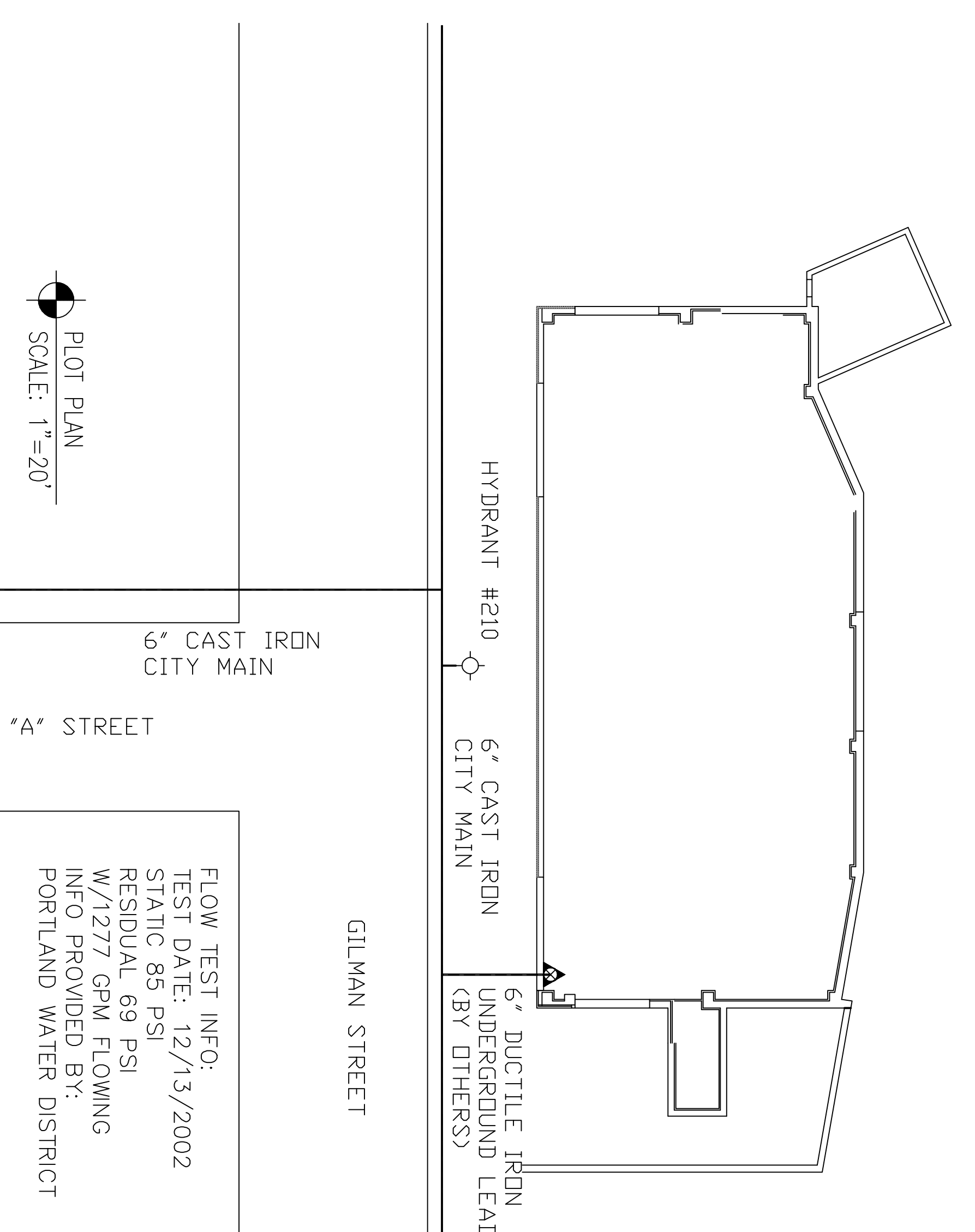
CALCULATION FILE: C643-2010.LVS  
 Design Area No. W93 - OH II  
 Density 0.2 Area @ 1500 S. sq ft  
 Includes 250 sqm from above drawings



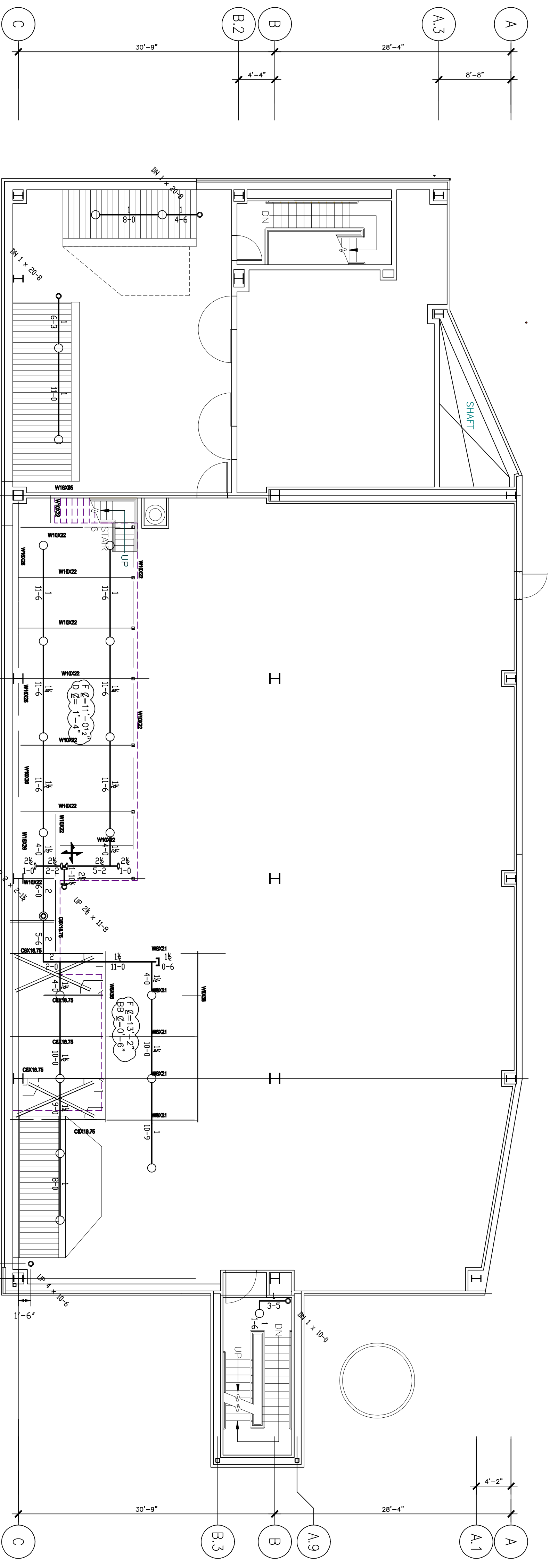
SECOND LEVEL - FLOOR LAYOUT  
 FLOOR ELEVATION 96'-0"

100' TYPICAL SERIES 11-B BRASS UPRIGHT  
 200' STANDARD RESPONSE STANDARD COVERAGE  
 K-5.6, 1/2" NPT, SIN 3151  
 2 TYPICAL SERIES 11-B BRASS UPRIGHT  
 STANDARD RESPONSE STANDARD COVERAGE  
 K-5.6, 1/2" NPT, SIN 3151  
 3 TYPICAL SERIES 11-B BRASS UPRIGHT  
 STANDARD RESPONSE STANDARD COVERAGE  
 K-5.6, 1/2" NPT, SIN 3151  
 4 TYPICAL SERIES 11-B BRASS UPRIGHT  
 STANDARD RESPONSE STANDARD COVERAGE  
 K-5.6, 1/2" NPT, SIN 3151

PLOT PLAN  
 SCALE: 1"=20'



FLOW TEST INFO:  
 TEST DATE: 12/13/2002  
 STATIC 85 PSI  
 RESIDUAL 69 PSI  
 W/1277 GPM FLOWING  
 INFO PROVIDED BY:  
 PORTLAND WATER DISTRICT



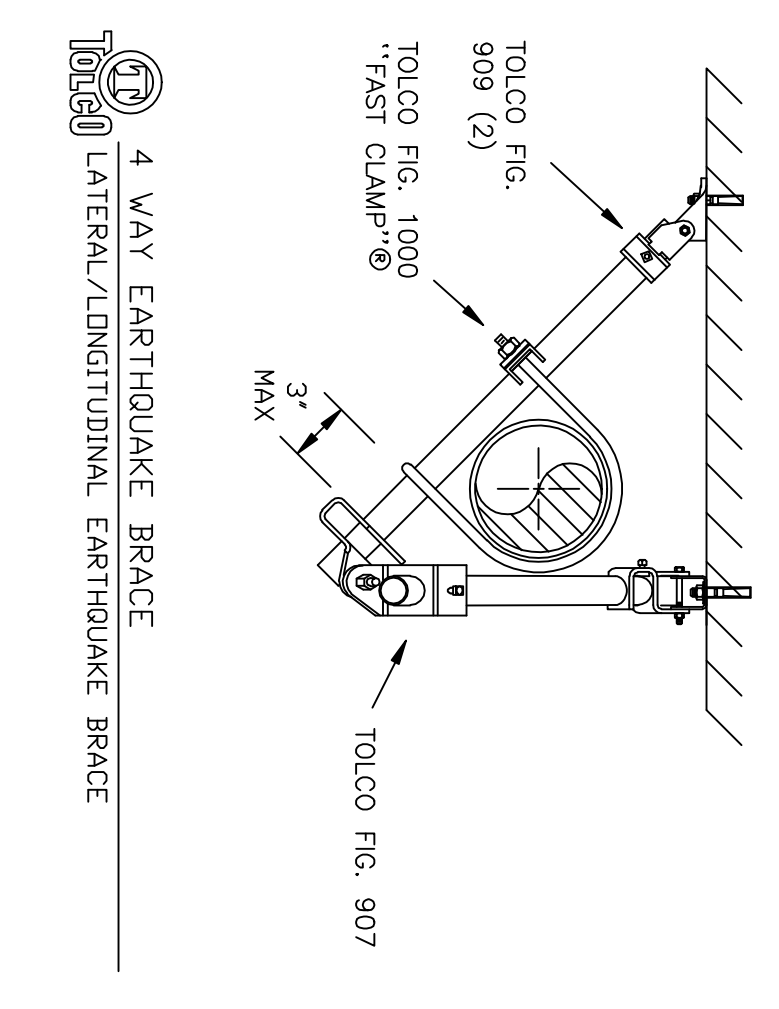
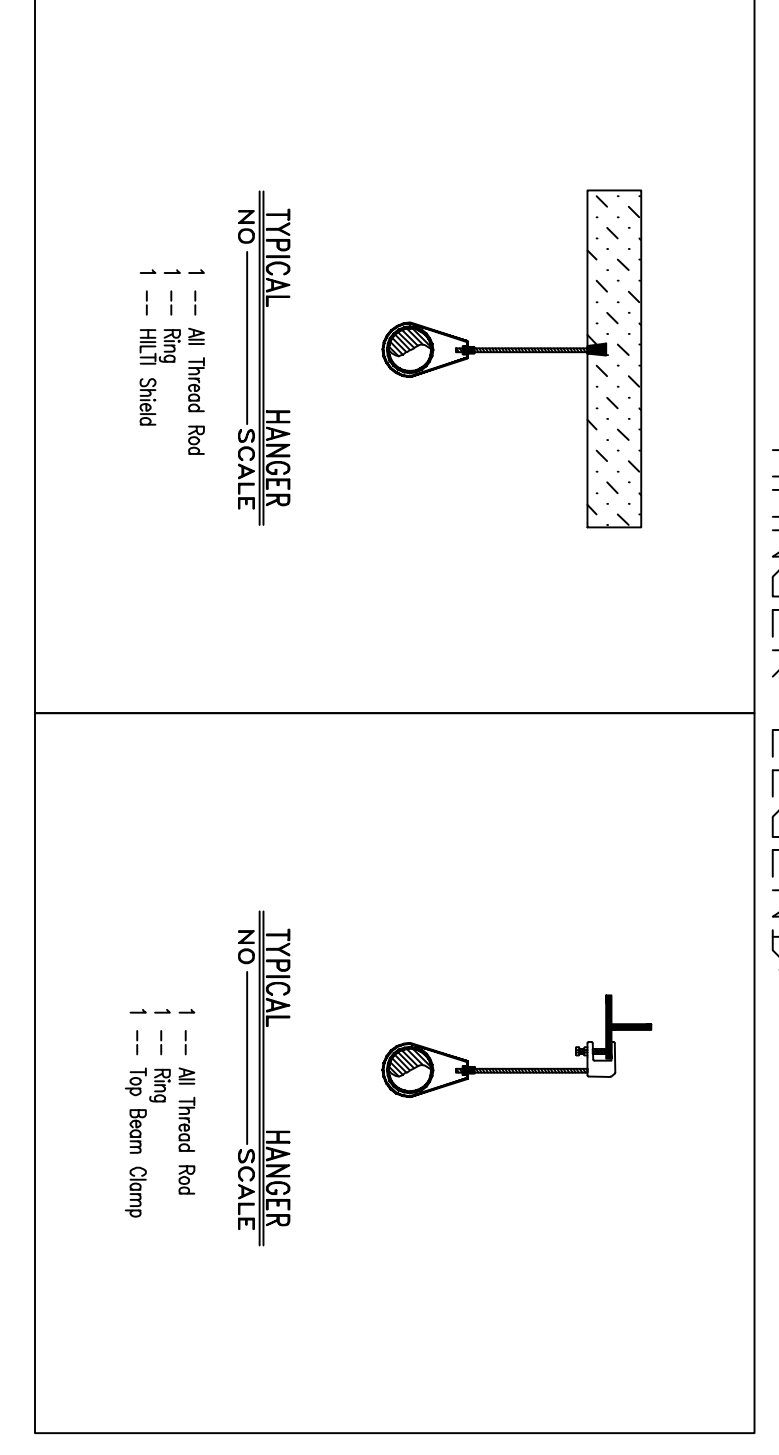
SECOND LEVEL - MEZZANINE LAYOUT  
 FLOOR ELEVATION 98'-0"

2 TYPICAL SERIES 11-B BRASS UPRIGHT  
 STANDARD RESPONSE STANDARD COVERAGE  
 K-5.6, 1/2" NPT, SIN 3151

**LEGEND:**  
 ○ UPRIGHT SPRINKLER ON A BRANCH LINE  
 ● UPRIGHT SPRINKLER ON A 1" SPRING  
 ● CONCEALED PENDENT SPRINKLER ON A 1" DROP  
 ● RECESSED HORIZONTAL SIDEWALL SPRINKLER  
 ○ GROOVED COUPLING  
 ○ HYDRAULIC REFERENCE POINT  
 ○ CEILING HEIGHT  
 ○ FINISHED FLOOR TO PIPE CENTERLINE  
 ○ MEZZANINE FLOOR TO PIPE CENTERLINE  
 ○ BOTTOM OF BEAM TO PIPE CENTERLINE  
 ○ METAL DECK TO PIPE CENTERLINE  
 ○ 4-WAY SWAY BRACE

**SYSTEM CLASSIFICATION:**  
 A WET PIPE SYSTEM OF AUTOMATIC SPRINKLERS TO BE INSTALLED IN ALL UNOCCUPIED ROOMS WITH EXCEPTION UTILITY MACHINABLE ROOM WILL BE PROTECTED BY A DRY PIPE SYSTEM FED FROM THE WET SYSTEM. IN ACCORDANCE WITH NFPA-13 STANDARD FOR THE INSTALLATION OF SPRINKLER SYSTEMS 2002 EDITION, THE SYSTEM SHALL BE INSTALLED TO PROVIDE A DENSITY OF 0.20 GPM PER SQUARE FOOT OVER THE MOST REMOTE 1500 SQUARE FEET WITH A HOSE ALLOWANCE UP TO 650 GPM.

**DEAN & ALLYN, INC.**  
 FIRE PROTECTION - SPECIAL HAZARD  
 PO BOX 709 GRAY MAINE 04039  
 (207)657-5646 FAX:(207)657-5647



**GENERAL NOTES:**  
 ALL THREADED PIPE IS TO BE SCH. 40 BLACK STEEL, U/V/N.  
 ALL GROOVED PIPE IS TO BE SCH. 40 BLACK STEEL, U/V/N.  
 DIMENSIONS SHOWN ON THREADED PIPE ARE CENTER TO CENTER U/V/N.  
 DIMENSIONS SHOWN ON GROOVED PIPE ARE CUT LENGTHS U/V/N.  
 THE CENTER OF CEILING TILE MODULES  
 IS SUFFICIENT HEAT TO PREVENT FREEZING OF THE WET SPRINKLER SYSTEM  
 IS REQUIRED TO BE FURNISHED BY THE OWNER/DOWNER.

NO.	REVISIONS	DATE	BY	DESCRIPTION
1				
2				

SCALE: 1/8"=1'-0"	SCALE: 1/8"=1'-0"	SCALE: 1/8"=1'-0"	SCALE: 1/8"=1'-0"
APPROVED BY	DATE	SURVEYED BY	DATE
DATE	DATE	CHECKED BY	DATE
DATE	DATE	SCALE: 1/8"=1'-0" U/V/N	DATE
DATE	DATE	SHEET NO. 2 OF 2	DATE

DRAWING TITLE	DRAWN BY	CHECKED BY	DATE
CENTRAL UTILITY PLANT-2ND FLOOR	DAVID A. STEWART	DAVID A. STEWART	11/13/02
JOB NO.	PROJECT NO.	DATE	DATE
22 BRAMHALL STREET	04039	12/13/2002	12/13/2002
PORTLAND, MAINE 04101	04039		

REV. 0	DATE	DESCRIPTION
1.30		
280		