

GENERAL CONDUIT NOTES:

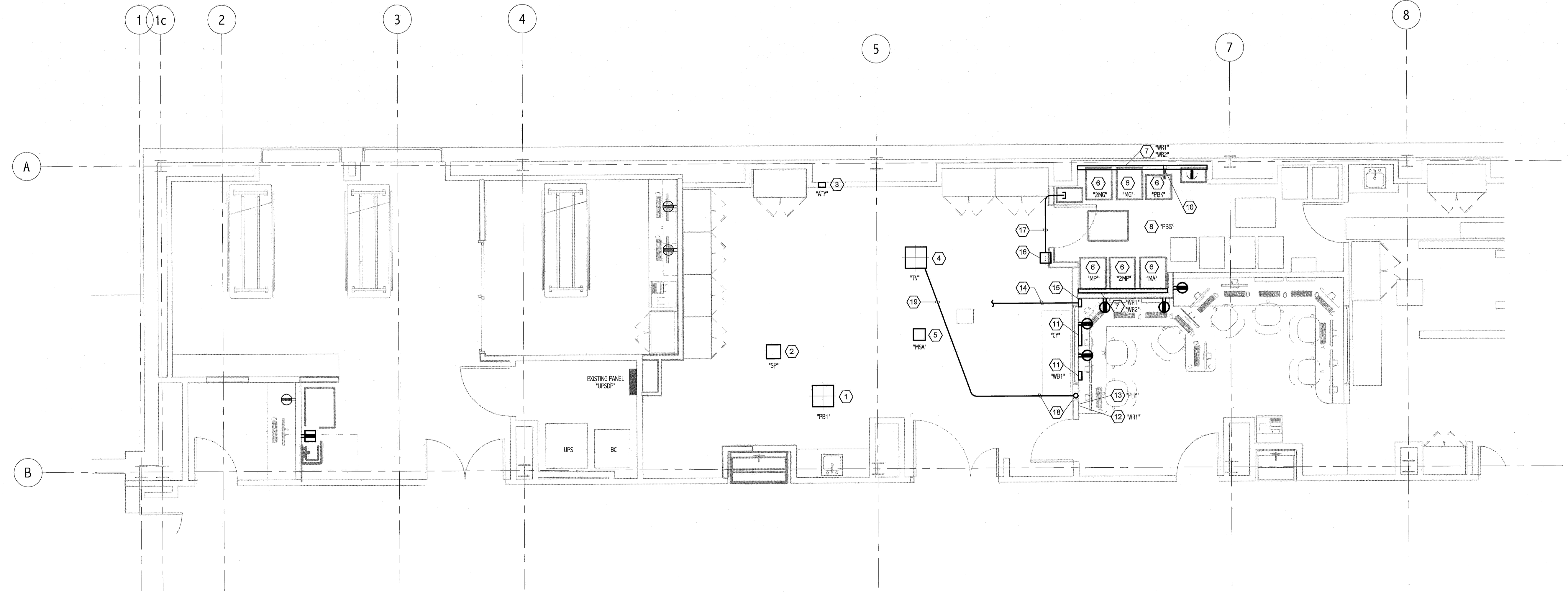
1. *PBK TO PDU CABINET: 1-1 1/2" C AND 2-2" C, COORDINATE CABLE REQUIREMENTS WITH PHILIPS.
2. *CB1 TO *PBK: 1-2" C
3. *CB1 TO *ST1: 1-3/4" C
4. *PBK TO *GE: 1-3/4" C
5. *MA TO *ML: 1-3/4" C
6. *AT1 TO *DS: 1-3/4" C
7. *SP TO *MS: 1-1", 1-2 1/2", 1-1 1/2" C
8. *SP TO *MP: 1-2 1/2", 1-1", 2-2", 2-2 1/2" C
9. *SP TO *MA: 1-2 1/2" C
10. *MSA TO *MP: 1-2 1/2", 1-1" C
11. *MSA TO *MT: 2 1/2",
12. *PHY TO *MSA: 1-2 1/2" C
13. *TV TO *MA: 1-2", 1-2 1/2" C
14. *TV TO *MP: 1-1 1/2" C
15. *AT1 TO *MA: 2 1/2" C
16. *AT1 TO *TV: 1-3/4" C
17. *PBK TO *MA: 1-2" C
18. *PBK TO *MA: 1-3/4" C
19. *MG TO *MA: 1-2 1/2" C
20. *2MG TO *MA: 1-2 1/2" C
21. *MG TO *MP: 1-2" C
22. *2MG TO *2MP: 1-2" C
23. *PB1 TO *2MG: 1-2 1/2", 1-1", 1-1 1/2" C
24. *PB1 TO *2MP: 2-2" C
25. *PB1 TO *MP: 2-2 1/2", 1-2 1/2", 1-1" C
26. *PB1 TO *MA: 1-2" C
27. *TV TO CONTROL ROOM: 4-1 1/2" C

NOTE:

1. SEE SHEET E-001 FOR LEGEND AND GENERAL NOTES.
2. ALL RACEWAYS AND EQUIPMENT SHALL MEET THE REQUIREMENTS OF PHILIPS INCLUDING BUT NOT LIMITED TO CONDUITS, DUCTS, TROUSERS, BONES, DIVIDERS, COVERS, BENDS, OPENINGS, GROMMETS, CROSS OVERS, PULL RIFES AND SIMILAR.
3. SEE DRAWING EP651 FOR ADDITIONAL RACEWAY AND CABLE REQUIREMENTS.

KEYED NOTES:

- 1 PROVIDE 18"x18"x6" CEILING BOX *PB1, FLUSH MOUNTED WITH 3" KNOCKOUT.
- 2 PROVIDE 12"x12"x4" FLOOR BOX *SP BENEATH FLOOR. CORE DRILL 8" HOLE THRU FLOOR.
- 3 PROVIDE 6"x6"x4" BOX *AT1, 70" AFF. VERIFY FINAL LOCATION WITH LOCAL PHILIPS SERVICE.
- 4 PROVIDE 18"x18"x6" CEILING BOX *TV, FLUSH MOUNTED WITH 2 1/2" KNOCKOUT.
- 5 PROVIDE 10"x10"x6" FLOORBOX *MSA BENEATH FLOOR. CORE DRILL 5" HOLE THRU FLOOR.
- 6 PROVIDE BOX 19 1/4"x6 7/8"x4" BEHIND EACH OF *2MG, *MG, *MP, *MA.
- 7 PROVIDE TWO 10"x4" HORIZONTAL DUCTS, ONE AT FLOOR LEVEL *WR1 AND ONE AT 75" AFF TO BOTTOM *WS2.
- 8 PROVIDE CENTRAL GROUND BUSBAR *PBG. FOLLOW PHILIPS REQUIREMENTS.
- 9 UNIVERSAL TRANSFER SWITCH.
- 10 PROVIDE 18"x18"x6" BOX AND 10"x4" DUCT BEHIND *PBK *RT.
- 11 CONNECTION BOXES *CY AND *MB1 BY PHILIPS.
- 12 EXISTING DUCT *WR1 UNDERDESK. CUT AS REQUIRED TO ACCOMMODATE *CY CONNECTION BOX. PROVIDE NEW STAINLESS STEEL COVERS WITH GROMMET OPENINGS *WMP AS REQUIRED BY PHILIPS.
- 13 STUB UP PHYSIOLOGICAL MONITORING CABLES CONDUIT *PHY HERE.
- 14 PROVIDE 2" CONDUIT ABOVE CEILING FROM STERIS BOOM TO NEW *WIREMOLD IN CONTROL ROOM.
- 15 PROVIDE *WIREMOLD SERIES 4000 RACEWAY FROM CEILING, DOWN WALL TO BELOW COUNTER.
- 16 PROVIDE 2-GANG FLUSH BOX, 60" AFF FOR VIDEO MATRIX SWITCHER REMOTE CONTROL DEVICE.
- 17 3/4" CONDUIT ABOVE CEILING FOR VIDEO MATRIX SWITCH 12 VOLT POWER AND DATA CABLES.
- 18 EXISTING 1 1/2" CONDUIT ABOVE CEILING AND IN WALL REMAINS. (VERIFY LOCATION & CONDITION)
- 19 NEW 1 1/2" CONDUIT EXTENDED FROM EXISTING CONDUIT TO *TV BOX. (IN ADDITION TO PHILIPS REQUIREMENTS)



1 CATH LAB#6 RACEWAY PLAN
1/4" = 1'-0"

144 Fox Street, P.O. Box 618
Portland, Maine 04104
TEL (207) 772-3846
FAX (207) 772-1070
www.smrtinc.com

ARCHITECTURE
ENGINEERING
PLANNING
INTERIOR DESIGN
COMMISSIONING

SMRT

STATE OF MAINE
WILLIAM R. HEIL
No. 77880
REGISTERED PROFESSIONAL ENGINEER
12/2/10

PROJECT NORTH

MAINE MEDICAL CENTER
CATH LAB #6
PORTLAND, ME

ISSUED FOR CONSTRUCTION
12-21-10

REV	DESCRIPTION	DATE
0	ISSUED FOR CONSTRUCTION	12-21-10

GRAPHIC SCALE:
0" 1"

SCALE: 1/4" = 1'-0"

PROJECT MANAGER: KD
X/DRAWN BY: COS
A/E OF RECORD: WPH
PROJECT NO: 10112-00
DATE: 12-21-10

SHEET TITLE:
CATH LAB#6
RACEWAY PLAN

SHEET No. EP101