

NOTE:

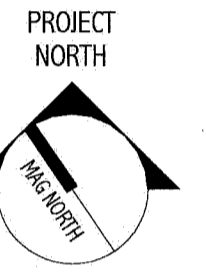
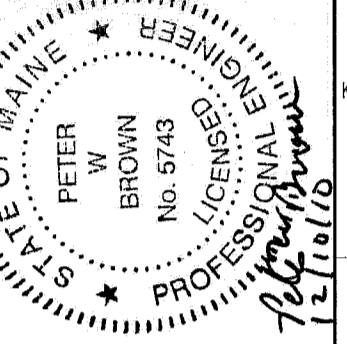
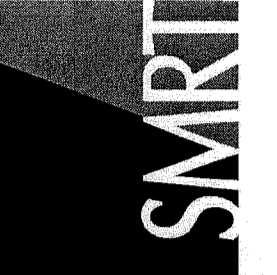
- 1. SEE SHEET M-001 FOR LEGEND AND ABBREVIATIONS.

KEYED NOTES:

- ① 24x10 DUCT DOWN IN CHASE TO LOW WALL RETURN 8" AFF.

144 Free Street, Box 68
Portland, Maine 04101
Tel: (207) 772-3846
Fax: (207) 772-1070
www.smrtinc.com

ARCHITECTURE
ENGINEERING
PLANNING
INTERIOR DESIGN
COMMISSIONING



MAINE MEDICAL CENTER
CATH LAB #6
PORTLAND, ME

ISSUED FOR CONSTRUCTION
12-21-10

CURRENT ISSUE STATUS:

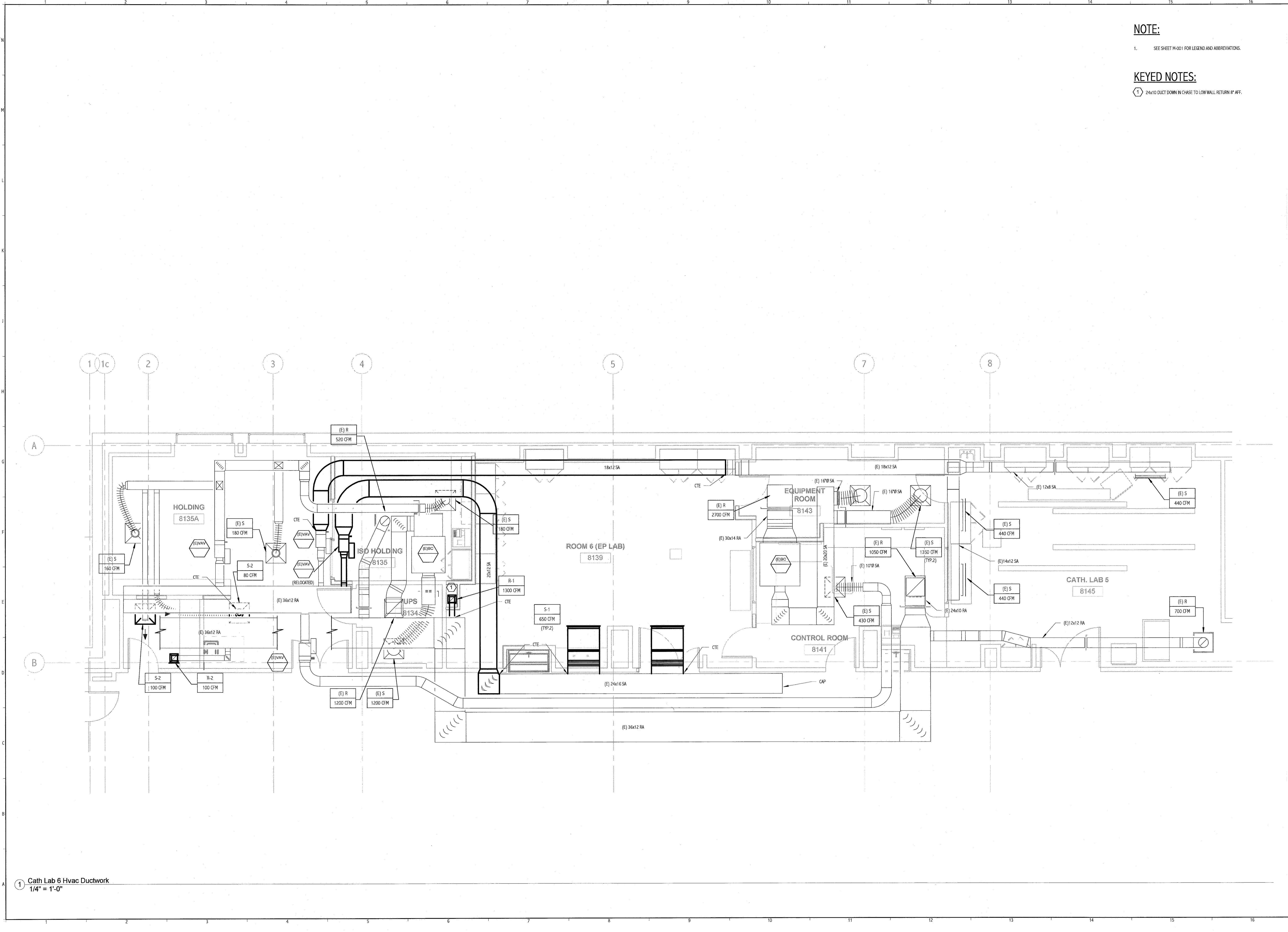
REV	DESCRIPTION	DATE

GRAPHIC SCALE:
0" = 1"

SCALE: 1/4" = 1'-0"
PROJECT MANAGER: KD
DRAWN BY: BAL
A/E OF RECORD: PWB
PROJECT NO: 10112-00
DATE: 12-21-10

SHEET TITLE:
CATH LAB 6 HVAC
DUCTWORK PLAN

SHEET No.
MH101



① Cath Lab 6 Hvac Ductwork
1/4" = 1'-0"