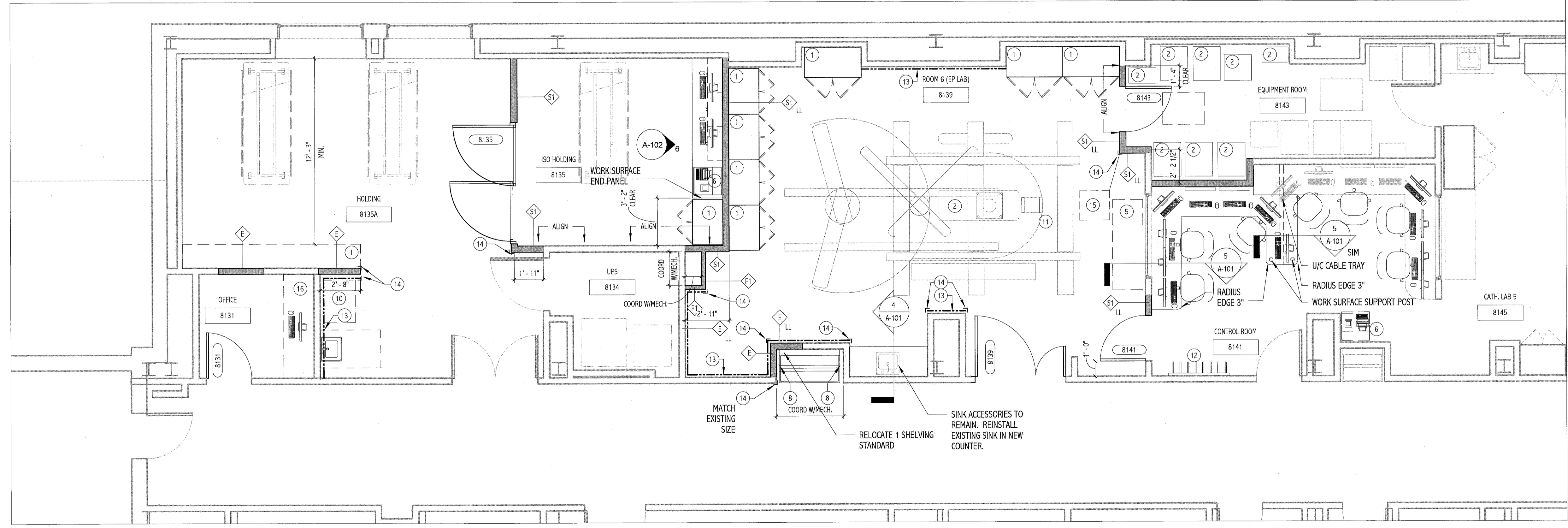


1 LEVEL 8 - DEMOLITION  
1/4" = 1'-0"

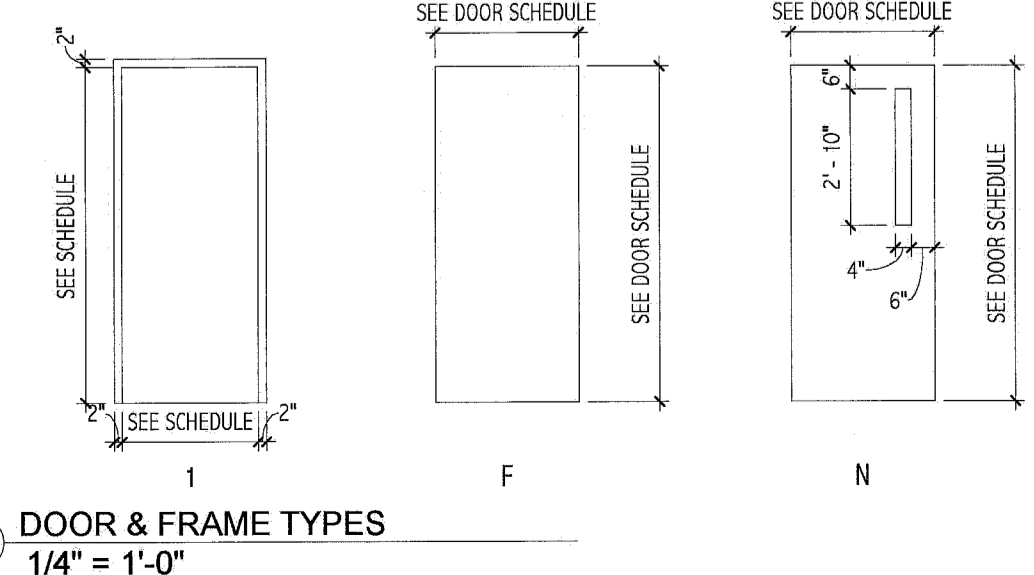


2 LEVEL 8 - FLOOR PLAN  
1/4" = 1'-0"

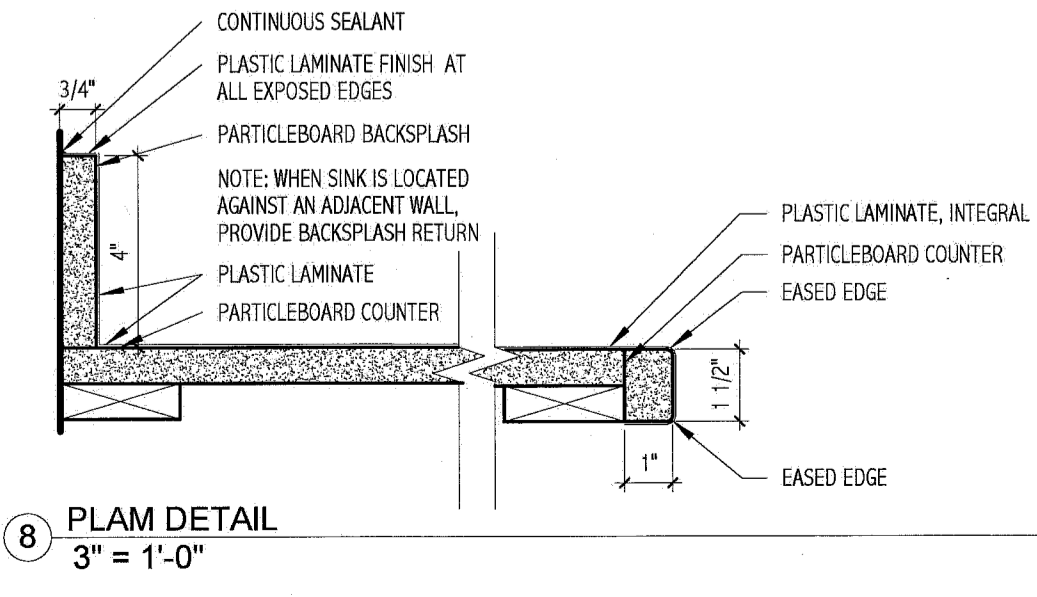
DOOR AND FRAME SCHEDULE (CATH LAB 6)													
DOOR #	WIDTH	HEIGHT	DOOR	THICK	MAT'L	ELEV	GLAZ	MAT'L	ELEV	HARDWARE SET	FIRE RATING	DOOR #	REMARKS
8131	3'-0"	7'-0"	0'-1 3/4"	WD	N	TEMP.		HM	1	2	-	8131	
8135	EXISTING	EXISTING	0'-1 3/4"	WD	F			HM	1	EXISTING	-	8135	EXISTING DOOR, FRAME & HARDWARE TO BE RE-USED
8139	6'-0"	7'-0"	0'-1 3/4"	WD	F			HM	1	3	-	8139	4'-0" X 7'-0", 2'-0" X 7'-0", NEW DOORS TO BE INSTALLED ON EXISTING FRAME. DOOR FRAME TO BE PID-3
8141	3'-0"	7'-0"	0'-1 3/4"	WD	N	TEMP.		HM	1	3	-	8141	NOTE: DOOR IS NOT LEAD LINED
8143	3'-0"	7'-0"	0'-1 3/4"	WD	F			HM	1	MATCH EXISTING	-	8143	

**DOOR HARDWARE:**

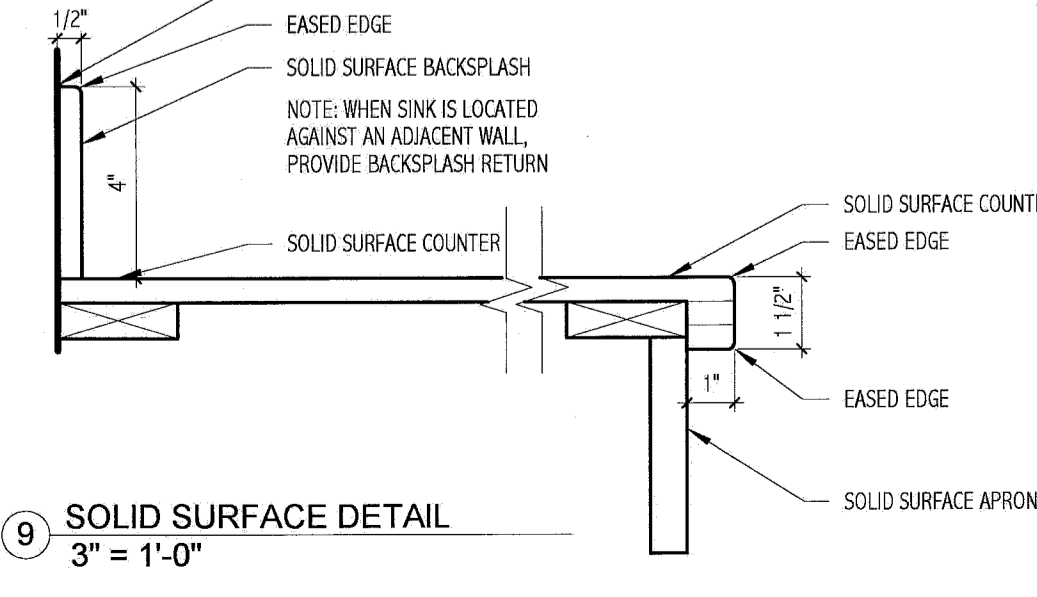
- PIVOT HINGES, ASTRAGAL, U-SHAPE S.S. PROTECTION PLATES ON LATCH & HINGE EDGES FOR BOTH LEAVES, S.S. PROTECTION PLATE @ 48" AFF CORRIDOR SIDE OF BOTH LEAVES, CLOSER & LEVER LOCKSET (PASSAGE) ON ACTIVE LEAF, FLUSH BOLTS ON INACTIVE LEAF.
- HINGES, LEVER LOCKSET (OFFICE FUNCTION), WALL STOP, SILENCERS.
- HINGES, POWER DOOR OPERATOR WITH TWO MOTION SENSORS, CLOSER, PUSH/PULL PLATES



DOOR & FRAME TYPES  
1/4" = 1'-0"



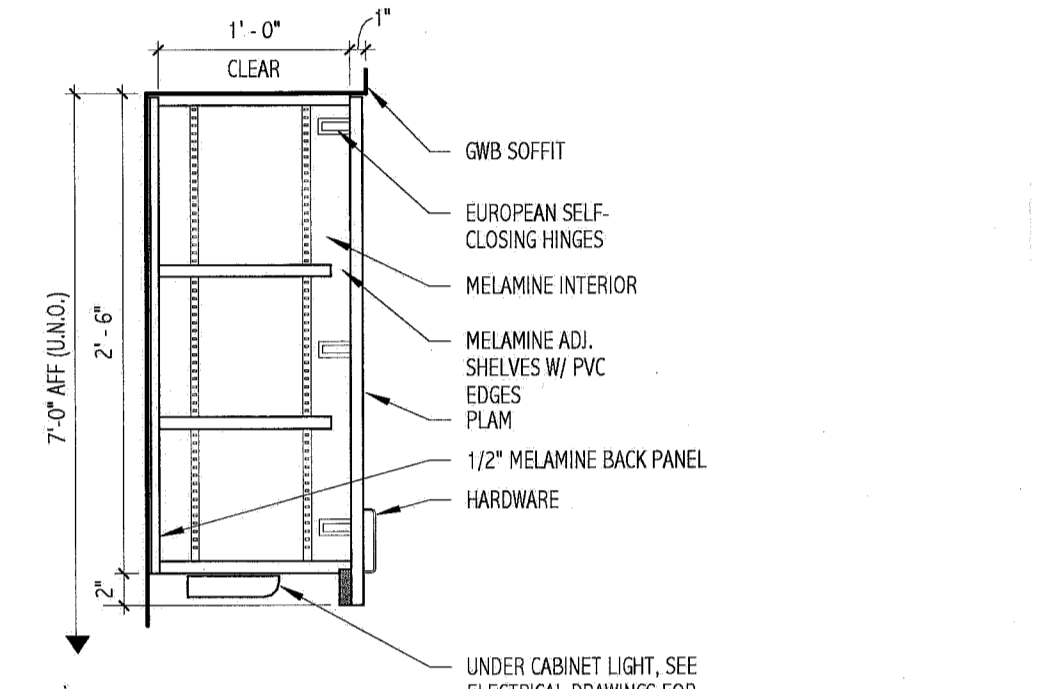
8 PLAM DETAIL  
3" = 1'-0"



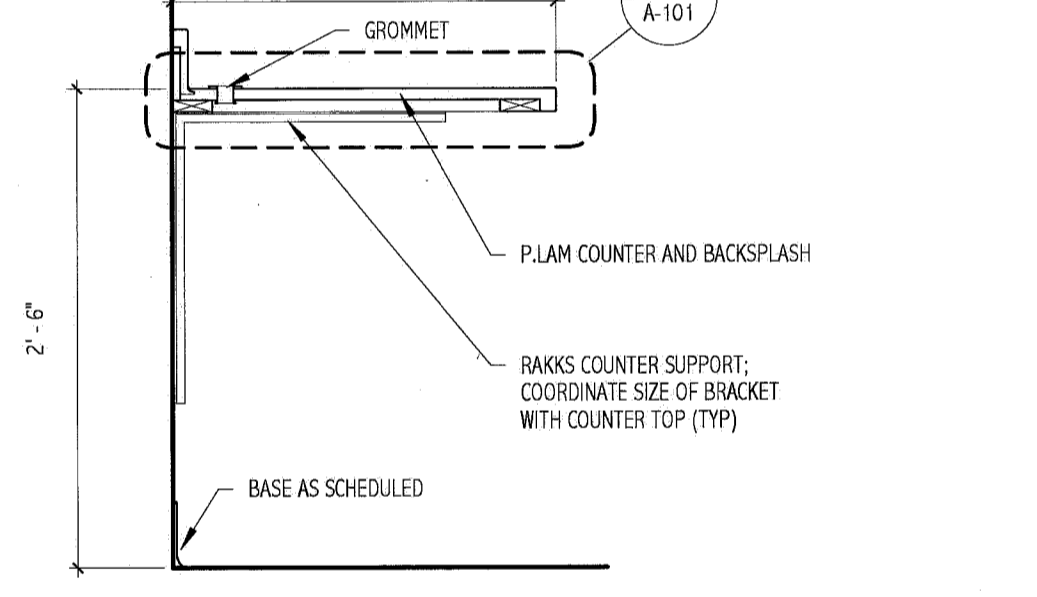
9 SOLID SURFACE DETAIL  
3" = 1'-0"

**DEMOLITION PLAN KEY NOTES:**

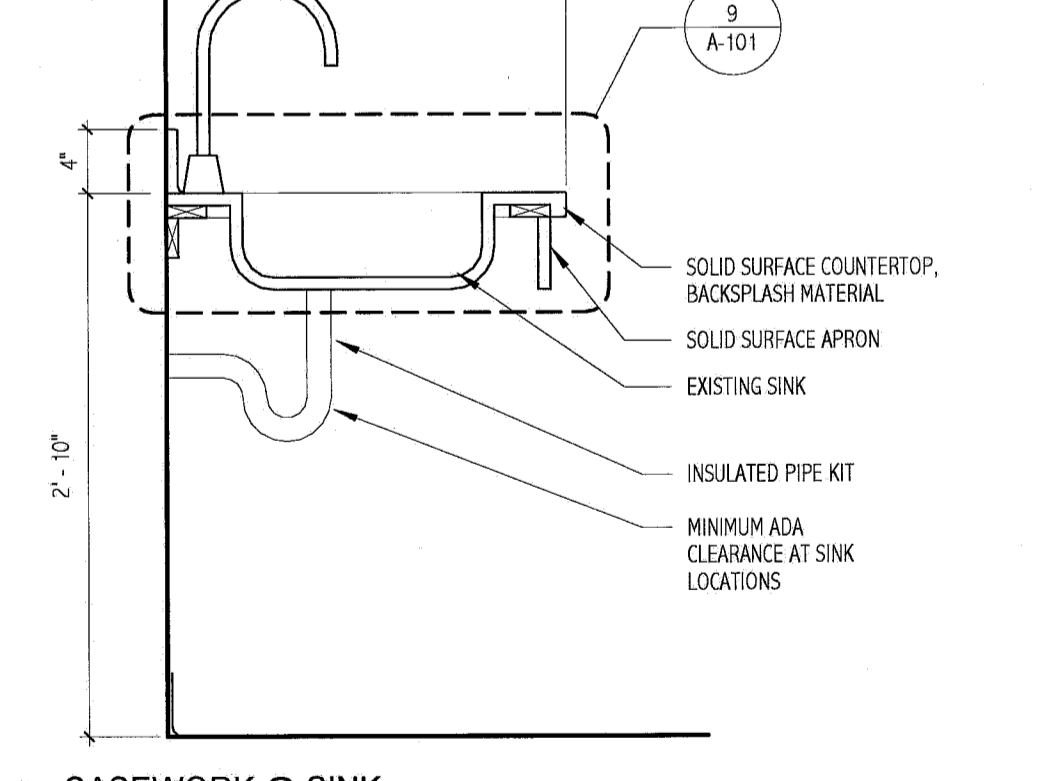
- REMOVE DOOR, FRAME AND HARDWARE.
- REMOVE DOOR, FRAME AND HARDWARE, SALVAGE FOR RE-USE. SEE NEW WORK FOR NEW LOCATION
- REMOVE WALL OR PORTION OF WALL INDICATED BY DASHED LINE. PRIOR TO REMOVAL, IDENTIFY IF WALL IS LOAD BEARING. IF FOUND TO BE A BEARING WALL NOTIFY ARCHITECT IMMEDIATELY.
- REMOVE FINISH FLOOR MATERIAL AND BASE. PREPARE SURFACE FOR NEW FINISHES AS REQUIRED BY SCHEDULE AND SPECIFICATIONS.
- REMOVE CEILING SYSTEM COMPLETE, I.E. FRAMING MEMBERS, TRACKS, WIRES, LIGHTING, ETC. COORDINATE EXTENTS WITH SCOPE OF NEW WORK. SALVAGE CEILING TILE WHERE POSSIBLE FOR RE-USE IN OTHER ROOMS.
- CEILING REMOVAL IS FOR MECH. INSTALLATION. SALVAGE CEILING TILE WHERE POSSIBLE. INSTALL NEW GRID AS SCHEDULED.
- REMOVE PORTION OF WORK SURFACE. SEE NEW WORK PLAN FOR EXTENTS.
- REMOVE EXISTING SHELVING SYSTEM AND PREPARE FOR NEW LOCATION. SEE NEW WORK PLAN FOR NEW LOCATION.
- REMOVE EXISTING CASEWORK.
- REMOVE EXISTING MODULAR OFFICE FURNITURE AND ACCESSORIES.
- REMOVE BREAKAWAY SLIDER FOR REINSTALLATION. SEE PLAN FOR NEW LOCATION.
- REMOVE PLUMBING FIXTURE. SEE MECH. DEMO DRAWING
- REMOVE MILL/CARE ROLLER TRACK CATH. RACKS, TRACKS, BASE BEAM, HARDWARE & STEEL



6 CASEWORK @ CABINET  
1" = 1'-0"



5 CASEWORK @ COUNTER P.LAM  
1" = 1'-0"



4 CASEWORK @ SINK  
1" = 1'-0"

144 Fore Street, PO Box 618  
Portland, Maine 04104  
Tel: (207) 772-5846  
Fax: (207) 772-1070  
www.smri.com

ARCHITECTURE  
ENGINEERING  
PLANNING  
INTERIOR DESIGN  
COMMISSIONING

**SMRI**

REGISTERED ARCHITECT  
KRISTEN L. DAMUTH  
No. 2788  
STATE OF MAINE

PROJECT NORTH

MAINE MEDICAL CENTER  
CATH. LAB # 6  
PORTLAND, ME

ISSUED FOR CONSTRUCTION  
12.21.10

PROJECT NO: 10112-00  
DATE: 12.21.10

REV	DESCRIPTION	DATE
0	ISSUED FOR CONSTRUCTION	12.21.10

GRAPHIC SCALE: 1" = 1'-0"

SCALE: As Indicated

PROJECT MANAGER: ID  
DRAWN BY: ART  
DATE OF RECORD: ID  
PROJECT NO: 10112-00  
DATE: 12.21.10

SHEET TITLE: DEMO & FLOOR PLAN

SHEET NO. A-101