

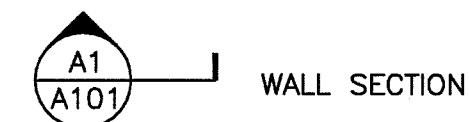
A/C AIR CONDITIONING
 ACPLAS ACOUSTICAL PLASTER
 ACT ACOUSTIC CEILING TILE
 AFF ABOVE FINISHED FLOOR
 AP ACCESS PANEL
 BCE BOTTOM CHORD EXTENSION
 BD BOARD
 BLP BORROWED LIGHT PANEL
 BO BOTTOM OF
 BOF BOTTOM OF FOOTING
 BOS BOTTOM OF STEEL
 BS BOTH SIDES
 BSE BRICK SHELF ELEVATION
 C CHANNE
 CB CATCH BASIN; CHALKBOARD
 CFM CUBIC FEET PER MINUTE
 CJ CONTROL JOINT; CONSTRUCTION JOINT
 CLG CEILING
 CMU CONCRETE MASONRY UNIT
 CT CERAMIC TILE
 CUH CABINET UNIT HEATER
 DF DRINKING FOUNTAIN
 DR DISPLAY RAIL
 DW DISHWASHER
 EF EXHAUST FAN; EACH FACE
 EJ EXPANSION JOINT
 EPDM ETHYLENE PROPYLENE DIENE MONOMER
 EW EACH WAY
 EWC ELECTRIC WATER COOLER
 FB FLAT BAR
 FBO FURNISHED BY OTHERS
 FCO FLOOR CLEAN-OUT
 FD FLOOR DRAIN
 FE FIRE EXTINGUISHER
 FF FINISHED FLOOR; FAR FACE
 FO FRAMED OPENING
 FS FAR SIDE
 GB GRAB BAR
 GC GENERAL CONTRACTOR
 GDT GYPSUM DROP-IN TILE
 GWB GYPSUM WALL BOARD
 H HORIZONTAL
 HC HANDICAPPED; HOLLOW CORE
 HM HOLLOW METAL
 HRU HEAT RECOVERY UNIT
 HT HEIGHT
 H&V HEATING AND VENTILATING
 HVAC HEATING, VENTILATING AND AIR CONDITIONING
 IF INSIDE FACE
 IJ ISOLATION JOINT
 INV INVERT
 JS JOIST SUBSTITUTE
 L ANGLE
 LLH LONG LEG HORIZONTAL
 LLV LONG LEG VERTICAL
 LP LIGHTING PANEL; LIQUIFIED PROPANE
 MB MARKER BOARD
 MDO MEDIUM DENSITY OVERLAY
 MO MASONRY OPENING
 MR MOISTURE-RESISTANT
 MUA MAKE-UP AIR
 N NOSING
 NIC NOT IN CONTRACT
 NS NEAR SIDE
 NTS NOT TO SCALE
 OC ON CENTER
 OF OUTSIDE FACE
 OH OVERHEAD
 PA PUBLIC ADDRESS
 PAF POWDER-ACTUATED FASTENER
 PL PLATE
 PLAM PLASTIC LAMINATE
 PLF POUNDS PER LINEAR FOOT
 PP POWER PANEL
 PSF POUNDS PER SQUARE FOOT
 PSI POUNDS PER SQUARE INCH
 PT PRESSURE-TREATED
 PVC POLYVINYL CHLORIDE
 PWP PLASCORE WALL PANEL
 R RISER; RADIUS
 RB RESILIENT BASE
 RD ROOF DRAIN
 RO ROUGH OPENING
 RR RUB-RAIL
 SACT SUSPENDED ACOUSTIC TILE CEILING
 SBO IBC SUPPLIED BY OWNER
 INSTALLED BY CONTRACTOR
 SC SOLID CORE
 SCHD SCHEDULE
 SF SQUARE FOOT; SUPPLY FAN
 SK SHEAR KEY
 SN SANITARY NAPKIN (DISPENSER)
 SP SPACES
 SS STAINLESS STEEL
 T TREAD
 TB TACKBOARD
 T&B TOP AND BOTTOM
 TBM TEMPORARY BENCHMARK
 TCE TOP CHORD EXTENSION
 TJ TIE JOIST
 TO TOP OF
 TOC TOP OF CONCRETE
 TOF TOP OF FOOTING
 TOM TOP OF MASONRY
 TOP TOP OF PIER
 TOS TOP OF STEEL; TOP OF SLAB
 TOW TOP OF WALL
 TP TOILET PAPER (DISPENSER)
 TS
 UH UNIT HEATER
 UNO UNLESS NOTED OTHERWISE
 V VENT PIPE; VERTICAL
 VB VAPOR BARRIER
 VCT VINYL COMPOSITION TILE
 VP VISION PANEL
 VTR VENT THROUGH THE ROOF
 W/ WITH
 WC WATER CLOSER
 WF WIDE FLANGE
 WH WATER HEATER
 W/O WITHOUT
 WP WORKING POINT
 WS WEB STIFFENER
 WWF WELDED WIRE FABRIC

GRID LOCATION	TITLE
SCALE	REFERENCE SHEET

DRAWING TITLE BLOCK



BUILDING SECTION



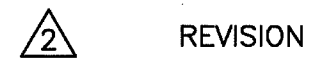
WALL SECTION



DETAIL



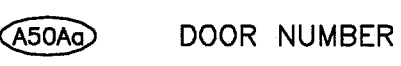
LEVEL LINE



REVISION



WINDOW TYPE



DOOR NUMBER



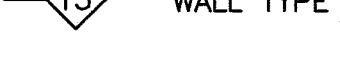
ROOM NAME



ROOM NUMBER



INTERIOR ELEVATION



WALL TYPE



BACKER ROD AND SEALANT



EXTERIOR ELEVATION

H3 SYMBOLS LEGEND

NTS

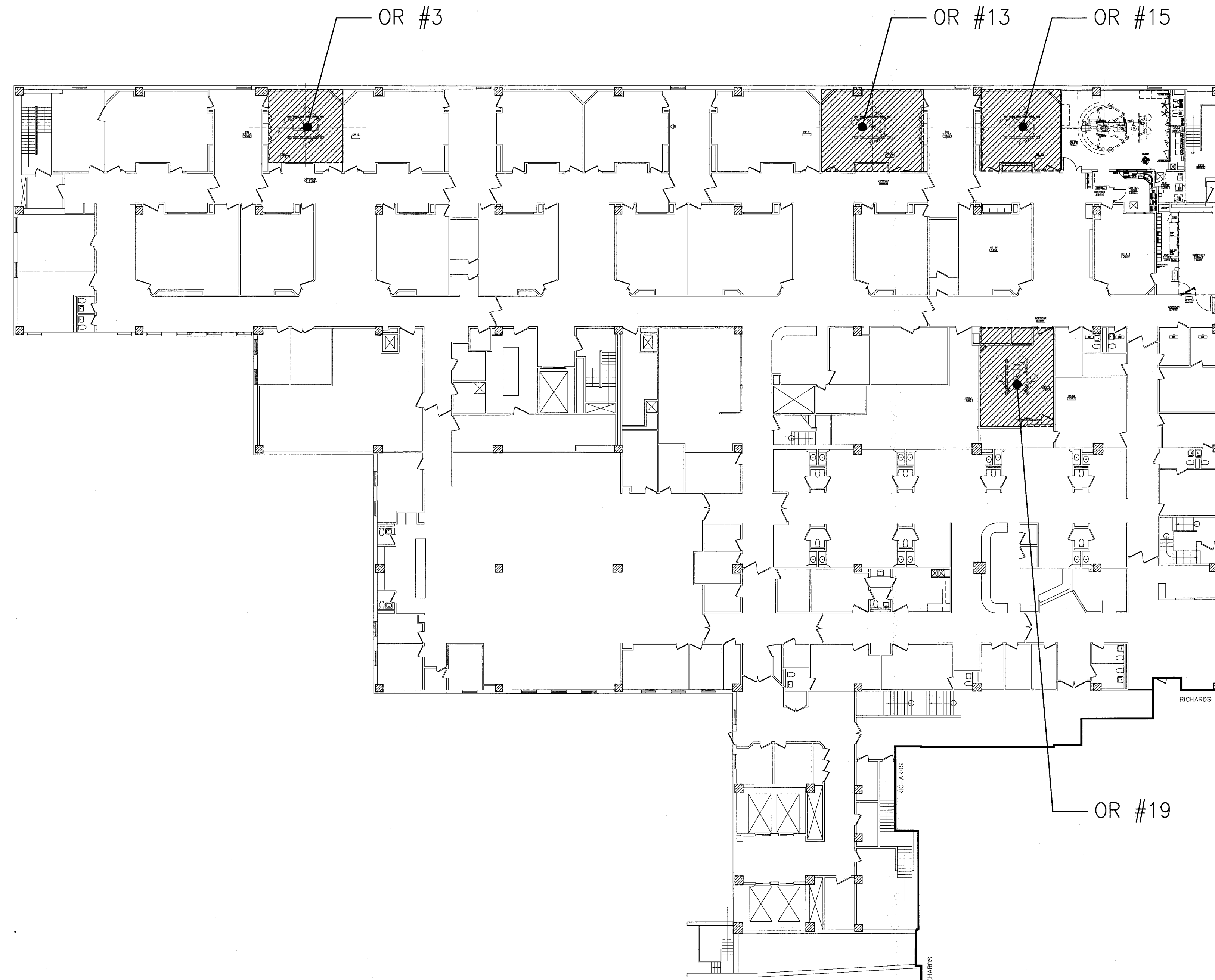
OR Light Replacement Project

OR#3, OR#13, OR#15, OR#19

22 Bramhall St. Portland, Maine

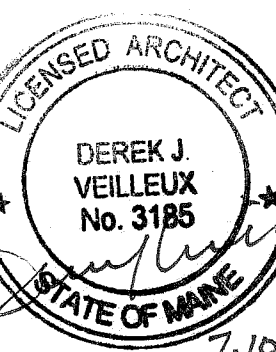
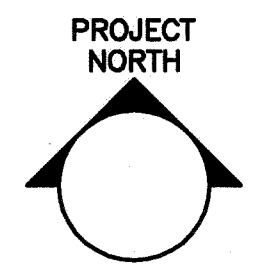
PROJECT LOCATION

BASEMENT, BEAN WING



DRAWING LIST

- GENERAL**
 G1001 COVER SHEET
- ARCHITECTURAL**
 AE101 FLOOR/DEMO PLAN
 AE102 REFLECTED CEILING PLAN
- STRUCTURAL**
 SF101 PART PLANS AND DETAILS



MAINE MEDICAL CENTER
 OR LIGHT REPLACEMENT, OR#3, #13, #15, #19
 22 BRAMHALL ST. PORTLAND, MAINE
 ISSUED FOR CONSTRUCTION
 7-10-12
 CURRENT ISSUE STATUS:

GENERAL NOTES:

- DO NOT SCALE THE DRAWINGS.
- FIELD VERIFY ALL DIMENSIONS AND LAYOUT PRIOR TO PROCEEDING WITH WORK. NOTIFY ARCHITECT IN WRITING OF ANY DISCREPANCIES OR INCONSISTENCIES. FAILURE TO REPORT ANY DISCREPANCIES WITHIN THESE CONSTRUCTION DOCUMENTS TO THE ARCHITECT WILL NOT BE GROUNDS FOR ADDITIONAL COST OR CHANGE ORDERS.
- "PROVIDE" MEANS "FURNISH AND INSTALL".
- THE CONTRACTOR SHALL BE RESPONSIBLE FOR PROVIDING ALL MATERIALS, AND WORKMANSHIP IN ACCORDANCE WITH FEDERAL, STATE, CITY AND LOCAL BUILDING CODES AND THEIR REQUIREMENTS.
- THE CONTRACTOR AND ALL TRADES SHALL NOTE REQUIREMENTS OF "GENERAL NOTES" ON ALL SHEETS.
- REFER TO LARGE SCALE PLANS FOR PARTITION TYPES AND DIMENSIONS IN AREAS WHICH ARE DETAILED AT A LARGER SCALE.
- EACH TRADE TO PROVIDE SMOKE OR FIRE SEALANT AT PENETRATIONS AS REQUIRED FOR WALL TYPE. ALL SEALANT, FIRE STOPPING, AND SMOKE STOPPING ASSEMBLIES SHALL BE U.L. RATED.
- DIMENSIONS ARE FACE OF CONCRETE, FACE OF MASONRY, AND CENTERLINE OF INTERIOR STUD PARTITIONS, EXTERIOR STUD PARTITIONS ARE DIMENSIONED TO EXTERIOR FACE OF STUD, UNLESS INDICATED OTHERWISE.
- REFER TO ALL CONSTRUCTION DOCUMENTS FOR REQUIREMENTS WHICH MAY AFFECT THE WORK AND COORDINATE SAME.
- REFERENCE DETAILS AND ENLARGED PLANS FOR ADDITIONAL DIMENSIONAL INFORMATION.
- DOOR JAMBS SHALL BE LOCATED 6" FROM CORNER IN STUD PARTITIONS AND 8" FROM CORNER IN MASONRY PARTITIONS, UNLESS INDICATED OTHERWISE.

GRAPHIC SCALE:
 0" 1"

SCALE: 1/4"=1'-0"
 PROJECT MANAGER: DJV
 JC/DRAWN BY: MDR
 A/E OF RECORD: DJV
 CAD FILE: G1001-12078
 PROJECT NO: 12078
 DATE: 7-10-12

SHEET TITLE:
COVER SHEET

SHEET No.
G1001
 © COPYRIGHT 2012 SMRT INC.

144 Fore Street/P.O. Box 618
 Portland, Maine 04104
 tel. (207) 772-3846
 fax. (207) 772-1070
 www.smrtinc.com

ARCHITECTURE
 ENGINEERING
 PLANNING
 INTERIOR DESIGN
 COMMISSIONING

SMRT