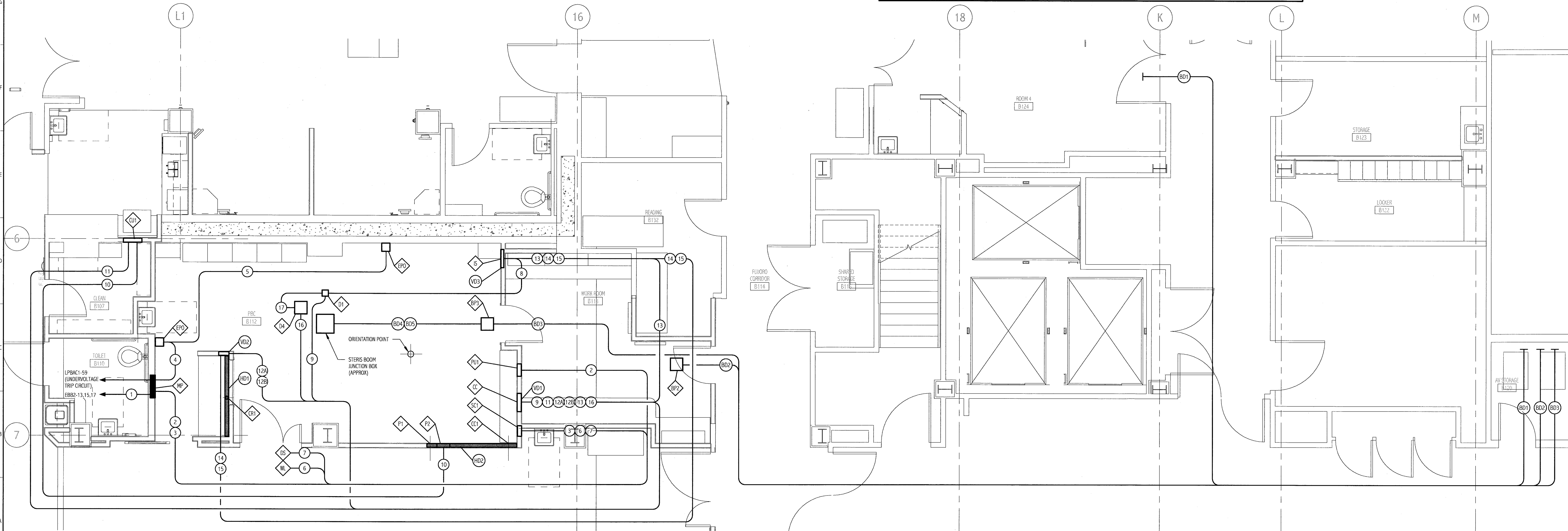


CABLE AND CONDUIT REQUIREMENTS - PBC ROOM

CONDUIT ITEM #	FROM ITEM #	TO ITEM #	CONDUIT QTY AND SIZE	CABLE	MAX CONDUIT LENGTH	REMARKS
1	EBB2	MP	(1) - 1 1/2"	4 #1 & 1#1 GND	N/A	CONDUIT & CABLE PROVIDED BY THE ELECTRICAL CONTRACTOR.
2	MP	P1	(1) - 1 1/2"	3 #2 & #2 GND	N/A	CONDUIT & CABLE PROVIDED BY THE ELECTRICAL CONTRACTOR.
3	MP	SC1	(1) - 1"	4 #6 & 1#6 GND	N/A	CONDUIT & CABLE PROVIDED BY THE ELECTRICAL CONTRACTOR.
4	MP	EPO	(1) - 3/4"	2 #12 & #12 GND	N/A	CONDUIT & CABLE PROVIDED BY THE ELECTRICAL CONTRACTOR.
5	EPO	EPO	(1) - 3/4"	2 #12 & #12 GND	N/A	CONDUIT & CABLE PROVIDED BY THE ELECTRICAL CONTRACTOR.
6	SC1	WL CONTROL	(1) - 3/4"	2 #14 & #14 GND STRANDED	N/A	CONDUIT & CABLE PROVIDED BY THE ELECTRICAL CONTRACTOR.
7	SC1	ES	(1) - 3/4"	3 #12 & #12 GND	N/A	CONDUIT & CABLE PROVIDED BY THE ELECTRICAL CONTRACTOR.
8	YB3 (IS)	D1	(1) - 2"	BY SIEMENS	60'	CONDUIT PROVIDED BY THE ELECTRICAL CONTRACTOR; CABLES FURNISHED AND INSTALLED BY SIEMENS. PROVIDE PULL STRING.
9	VD1 (SC1)	D1	(1) - 2 1/2"	BY SIEMENS	62'	CONDUIT PROVIDED BY THE ELECTRICAL CONTRACTOR; CABLES FURNISHED AND INSTALLED BY SIEMENS. PROVIDE PULL STRING.
10	P2	CU1	(1) - 2 1/2"	BY SIEMENS	85'	CONDUIT PROVIDED BY THE ELECTRICAL CONTRACTOR; CABLES FURNISHED AND INSTALLED BY SIEMENS. PROVIDE PULL STRING.
11	VD1 (SC1)	CU1	(1) - 2"	BY SIEMENS	98'	CONDUIT PROVIDED BY THE ELECTRICAL CONTRACTOR; CABLES FURNISHED AND INSTALLED BY SIEMENS. PROVIDE PULL STRING.
12A	CC (SC1)	VD2 (CR1)	(1) - 3"	BY SIEMENS	29'	CONDUIT PROVIDED BY THE ELECTRICAL CONTRACTOR; CABLES FURNISHED AND INSTALLED BY SIEMENS. PROVIDE PULL STRING.
12B	CC (SC1)	VD2 (CR1)	(1) - 2"	BY SIEMENS	29'	CONDUIT PROVIDED BY THE ELECTRICAL CONTRACTOR; CABLES FURNISHED AND INSTALLED BY SIEMENS. PROVIDE PULL STRING.
13	VD3 (IS)	VD3 (IS)	(1) - 3"	BY SIEMENS	44'	CONDUIT PROVIDED BY THE ELECTRICAL CONTRACTOR; CABLES FURNISHED AND INSTALLED BY SIEMENS. PROVIDE PULL STRING.
14	VD3 (IS)	VD2 (CR1)	(1) - 3"	BY SIEMENS	34'	CONDUIT PROVIDED BY THE ELECTRICAL CONTRACTOR; CABLES FURNISHED AND INSTALLED BY SIEMENS. PROVIDE PULL STRING.
15	VD3 (IS)	VD2 (CR1)	(1) - 2"	BY SIEMENS	34'	CONDUIT PROVIDED BY THE ELECTRICAL CONTRACTOR; CABLES FURNISHED AND INSTALLED BY SIEMENS. PROVIDE PULL STRING.
16	VD1 (CC)	D4	(1) - 2 1/2"	BY SIEMENS	44'	CONDUIT PROVIDED BY THE ELECTRICAL CONTRACTOR; CABLES FURNISHED AND INSTALLED BY SIEMENS. PROVIDE PULL STRING.
17	D1	D4	(1) - 2"	BY SIEMENS	6'	CONDUIT PROVIDED BY THE ELECTRICAL CONTRACTOR; CABLES FURNISHED AND INSTALLED BY SIEMENS. PROVIDE PULL STRING.
BD1	BDV RACK	ROOM 4	(1) - 3"	BY BDV	N/A	CONDUIT PROVIDED BY THE ELECTRICAL CONTRACTOR; CABLES FURNISHED AND INSTALLED BY BDV. PROVIDE PULL STRING.
BD2	BDV RACK	SP2	(1) - 3"	BY BDV	N/A	CONDUIT PROVIDED BY THE ELECTRICAL CONTRACTOR; CABLES FURNISHED AND INSTALLED BY BDV. PROVIDE PULL STRING.
BD3	BDV RACK	SP3	(1) - 3"	BY BDV	N/A	CONDUIT PROVIDED BY THE ELECTRICAL CONTRACTOR; CABLES FURNISHED AND INSTALLED BY BDV. PROVIDE PULL STRING.
BD4	SP3	STERIS JS	(1) - 2"	BY BDV	N/A	CONDUIT PROVIDED BY THE ELECTRICAL CONTRACTOR; CABLES FURNISHED AND INSTALLED BY BDV. PROVIDE PULL STRING.
BD5	SP3	STERIS JS	(1) - 2"	BY BDV	N/A	CONDUIT PROVIDED BY THE ELECTRICAL CONTRACTOR; CABLES FURNISHED AND INSTALLED BY BDV. PROVIDE PULL STRING.

- NOTES:**
- SEE E-001 FOR LEGEND, ABBREVIATIONS AND GENERAL NOTES.
 - REFER TO SIEMENS INSTALLATION DRAWINGS, PROJECT #1102468, FOR ADDITIONAL INFORMATION.
 - IN ADDITION TO BOV CONDUIT REQUIREMENTS SHOWN ON THIS DRAWING, REFER TO EY101 FOR ADDITIONAL BOX AND CONDUIT REQUIREMENTS IN PBC 112 AND WORKROOM 113. BOV WIRING IN X-RAY ROOM 4 WILL BE FISHED ABOVE CEILING.



ELECTRICAL RACEWAY PLAN - BASEMENT FLOOR
1/4" = 1'-0"

144 Fox Street, P.O. Box 618
 Portland, Maine 04104
 Tel: (207) 775-3846
 Fax: (207) 775-1070
 www.smartinc.com

ARCHITECTURE
ENGINEERING
PLANNING
INTERIOR DESIGN
COMMISSIONING

2/24/12
Rev. C

PROJECT NORTH

MAINE MEDICAL CENTER
HOLDING, RADCU & PBC RENOVATION
PORTLAND, ME

ISSUED FOR CONSTRUCTION
 02.24.12
 CURRENT ISSUE STATUS:

REV	DATE	DESCRIPTION
0	2.24.12	ISSUED FOR CONSTRUCTION

GRAPHIC SCALE:

SCALE:
As Indicated

PROJECT MANAGER:
DIV

IC/DRAWN BY:
CDS

AVE OF RECORD:
JPP

PROJECT NO.:
11063

DATE:
2.24.12

SHEET TITLE:
ELECTRICAL RACEWAY PLAN - BASEMENT FLOOR

SHEET No.:
EP402