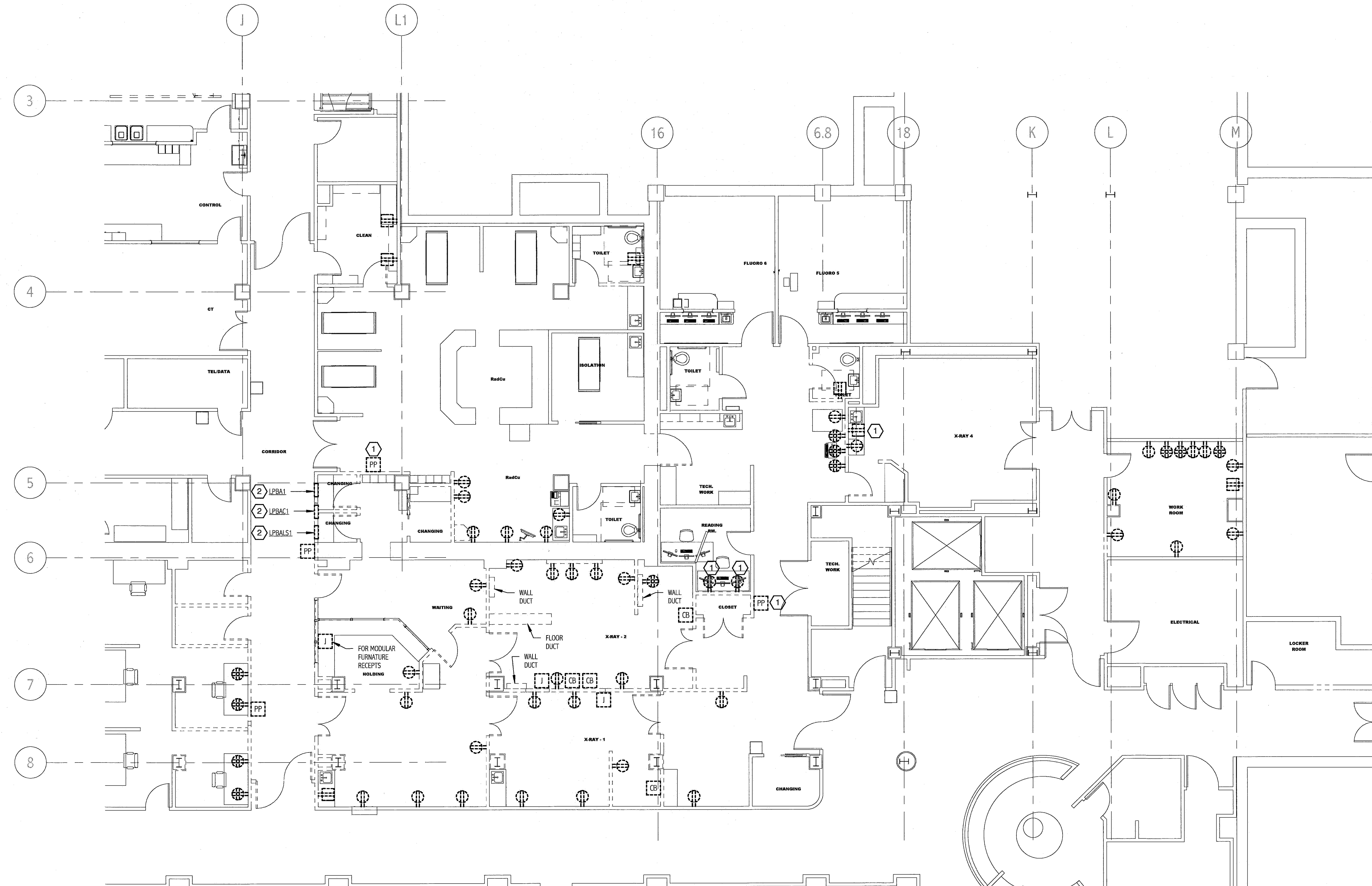


NOTE:

1. SEE E-001 FOR LEGEND, ABBREVIATIONS AND GENERAL NOTES.

KEYED NOTES:

- ① RELOCATE. SEE EP101 FOR NEW LOCATION.
- ② PANELBOARD TO BE REMOVED. EXISTING TO REMAIN CIRCUITS SHALL BE TRANSFERRED TO NEW PANELBOARD ON OPPOSITE SIDE OF CORRIDOR.



BASEMENT LEVEL POWER DEMOLITION PLAN
 1/8" = 1'-0"

144 Pine Street P.O. Box 618
 Portland, Maine 04104
 Tel: (207) 773-2846
 Fax: (207) 773-1070
 www.smrt.com

ARCHITECTURE
 ENGINEERING
 PLANNING
 INTERIOR DESIGN
 COMMISSIONING

SMRT

STATE OF MAINE
 PROFESSIONAL SEAL
 JON P. FERRAZZI
 LICENSE NO. 7707
 Rev. 0 2/24/12

PROJECT NORTH

MAINE MEDICAL CENTER
 HOLDING, RADCU & PBC RENOVATION
 PORTLAND, ME

ISSUED FOR CONSTRUCTION
 02.24.12

NO.	ISSUED FOR CONSTRUCTION DESCRIPTION	DATE
0	ISSUED FOR CONSTRUCTION	2.24.12
1	ISSUED FOR CONSTRUCTION	2.24.12

GRAPHIC SCALE:
 0" 1"

SCALE: 1/8" = 1'-0"

PROJECT MANAGER: DM
 ARCHITECT: BAL
 DATE OF RECORD: JPP
 PROJECT NO.: 11063
 DATE: 2.24.12

SHEET TITLE:
BASEMENT LEVEL POWER DEMOLITION PLAN

SHEET No.: ED101