

MAINE MEDICAL CENTER
 HOLDING, RADCU & PBC RENOVATION
 PORTLAND, ME

ISSUED FOR CONSTRUCTION
 02.24.12

CURRENT ISSUE STATUS:
 DATE: 2.24.12
 REVISIONS:
 0
 ISSUED FOR CONSTRUCTION DESCRIPTION
 REVISIONS:

SHOCK ABSORBER SCHEDULE

TYPE	FIXTURE UNIT RATING	BASIS OF DESIGN	
		MANUF.	FIGURE NO.
'A'	1-10	ZURN	100
'B'	12-32	ZURN	200
'C'	33-60	ZURN	300
'D'	61-113	ZURN	400
'E'	114-154	ZURN	500
'F'	155-330	ZURN	600

PLUMBING FIXTURE CONNECTION SCHEDULE

FIXTURE	CW	HW	WASTE	VENT	NOTES
FLUSH VALVE WATER CLOSET	1"	-	4"	2"	①
LAVATORY	1/2"	1/2"	1-1/2"	1-1/2"	②
SINK	1/2"	1/2"	1-1/2"	1-1/2"	②
SERVICE SINK / MOP RECEPTOR	3/4"	3/4"	3"	2"	②
ICE MAKER BOX	1/2"	-	1-1/2"	1-1/2"	②
EMERGENCY EYE WASH MIXING VALVE	1/2"	1/2"	-	-	②
EMERGENCY EYE WASH	1/2"	-	-	-	

NOTES:
 ① PROVIDE SHOCK ABSORBER W/ ISOLATION VALVE, ACCESSIBLE.
 ② PROVIDE AIR CHAMBERS ON HW & CW CONNECTIONS.

PLUMBING SPECIALTIES SCHEDULE

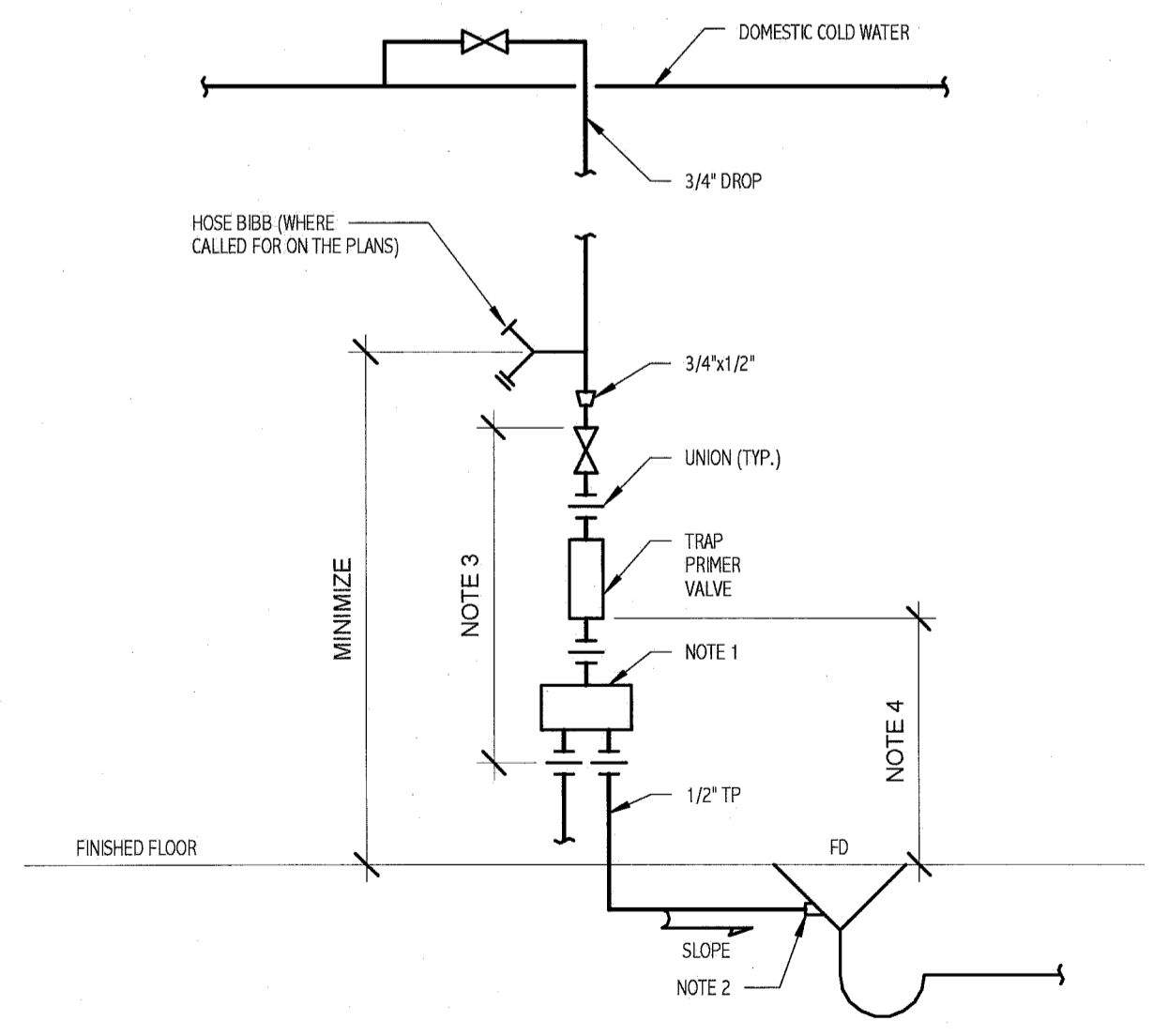
TAG	APPLICATION	TYPICAL UNIT MFG & MODEL NO.	DESCRIPTION	NOTES
FD-A	ICE MAKER INDIRECT WASTE DRAIN	ZURN #Z415E	FLOOR DRAIN ASSEMBLY WITH 'TYPE E' STRAINER AND FUNNEL.	①②
WB-A	ICE MAKER BOX	GUY GRAY #BIM875	18 GAUGE STAINLESS STEEL RECESSED BOX.	
EE-A	EMERGENCY EYE WASH	GUARDIAN #G5022	DECK MOUNTED EYEWASH/DRENCH HOSE UNIT	
EE-B	EMERGENCY EYE WASH MIXING VALVE	LEONARD #TA-300	EMERGENCY EYE WASH MIXING VALVE - MOUNT BELOW SINK COUNTER	③

NOTES:
 ① 1/2" TRAP PRIMER CONNECTION, PLUG WHERE NOT USED.
 ② SLAB ON GRADE-CAULD OUTLET.
 ③ PROVIDE SHUT-OFF VALVES, UNIONS AND BRONZE CHECK VALVES, WATTS SERIES 600 ON EE-B INLETS. PROVIDE SHUT-OFF VALVES AND UNIONS ON EE-B OUTLETS. ROUTE 1/2" TW FROM EE-B TO EE-A.

PLUMBING FIXTURE SCHEDULE

TAG	DESCRIPTION	FIXTURE	FAUCET/RAIN	TRIM	SUPPORT	NOTES
WC-A	FLOOR MOUNTED WATER CLOSET W/ BED PAN WASHER - ADA	AMERICAN STANDARD #3466.001 "MADERA", VITREOUS CHINA, SIPHON JET TYPE, 1-1/2" TOP SPUD, 1.6 GPF, "EVERCLEAN" SURFACE.	SLOAN BEDPAN WASHER FLUSHOMETER #BFW-1150-1.6	CHURCH #9500SSC SEAT - WHITE	-	
LAV-A	WALL HUNG LAVATORY - ADA	AMERICAN STANDARD #0356.421 "LUCERNE" VITREOUS CHINA, 20"x18", CENTER HOLE ONLY.	SLOAN OPTIMA SYSTEMS #EAF-275-ISM, CHICAGO #327-XCP GRID DRAIN, OFFSET TAILPIECE, CHROME PLATED	McGUIRE LOOSE KEY ANGLE STOPS, ESCUTCHEONS AND RISERS-CHROME PLATED	JAY R. SMITH #0710-Z	①②③
SK-A	STAINLESS STEEL UNDERMOUNT GENERAL PURPOSE - ADA	ELKAY #ELLH1616 16"x16"x7-7/8" DEPTH, 18 GAUGE, 304 SS.	SLOAN OPTIMA SYSTEMS #EAF-275-ISM, ELKAY #LKAD18 DRAIN AND OFFSET TAIL, CHROME PLATE FINISHES	McGUIRE LOOSE KEY ANGLE STOPS, ESCUTCHEONS AND RISERS-CHROME PLATED	-	①③
SK-B	WALL MOUNTED SINK - ADA	AMERICAN STANDARD #0356.421 "LUCERNE" VITREOUS CHINA, 20"x18", CENTER HOLE ONLY.	SLOAN OPTIMA SYSTEMS #EAF-275-ISM, CHICAGO #327-XCP GRID DRAIN, OFFSET TAILPIECE, CHROME PLATED	McGUIRE LOOSE KEY ANGLE STOPS, ESCUTCHEONS AND RISERS-CHROME PLATED	JAY R. SMITH #0710-Z	①②③
SK-C	WALL MOUNTED SINK - ADA	AMERICAN STANDARD #0356.015 "LUCERNE" VITREOUS CHINA, 20"x18", 8" HOLE CENTERS.	CHICAGO #786-GN2A, CHICAGO #327-XCP GRID DRAIN, OFFSET TAILPIECE, CHROME PLATED	McGUIRE LOOSE KEY ANGLE STOPS, ESCUTCHEONS AND RISERS-CHROME PLATED	JAY R. SMITH #0710-Z	①②③
MR-A	MOP RECEPTOR	FIAT #TSB-3000 TERRAZZO BASIN, 24"x24"x12" DEEP, #MSG 2424 WALL GUARDS.	CHICAGO #445-RC897SXKCP SERVICE SINK FAUCET, INTEGRAL CHECK STOPS	FIAT #832-AA HOSE AND BRACKET, #889-C.C MOP-HANGER, ALL WALL GUARDS	-	

NOTES:
 ① TRUEBRO #103 E-Z HANDI LAV-GUARD INSULATION KIT AND EXTENSIONS AS REQUIRED FOR ALL EXPOSED PIPING BENEATH SINK BASIN.
 ② PROVIDE WATTS SERIES #600 BRONZE CHECK VALVES ON CW AND HW INLETS TO MIXING VALVE.
 ③ PROVIDE OFFSET TAILPIECE FOR ADA ACCESSIBILITY



NOTES:
 1. FOR MULTIPLE TRAP PRIMER APPLICATION, GROUP PRIMERS TOGETHER WHEREVER POSSIBLE.
 2. PROVIDE 3/4"x1/2" THREAD AND SWEAT FITTING WHERE DRAIN BODY REQUIRES.
 3. WHERE PIPING DROP IS NOT EXPOSED, PROVIDE ACCESS PANEL.
 4. INSTALL VALVE AT A MINIMUM DISTANCE ABOVE THE FLOOR AS REQUIRED BY TRAP PRIMER MANUFACTURER, BUT NO LOWER THAN 1 FOOT AFF FOR EACH 20 FEET OF TRAP PRIMER PIPING.

② TRAP PRIMER NOT TO SCALE