

ROOM FINISH SCHEDULE PBC/RadCu										
ROOM NUMBER	NAME	FLOOR						CEILING		COMMENTS
		MAT'L	BASE	NORTH MAT'L	SOUTH MAT'L	EAST MAT'L	WEST MAT'L	MAT'L	HT	
B105	CORRIDOR	RUBS-1/2	RB-1	PTD-1	-	PTD-1	PTD-1	ACT-2	SEE RCP	
B106	NURSE STATION	RUBS-1/2	RB-1	PTD-3/PTD-5	PTD-3/PTD-5	PTD-3/PTD-5	PTD-3/PTD-5	ACT-2	SEE RCP	PTD-5 ALL SURFACES AT SOFFIT.
B107	CLEAN	VCT-1	RB-1	PTD-1	PTD-1	PTD-1	PTD-1	ACT-1	SEE RCP	
B110	TOILET	CT-1	CTB-1	PTD-1/CT	PTD-1/CT	PTD-1/CT	PTD-1/CT	ACT-1	SEE RCP	CT-2, CT-3 AND CT-4 PATTERN UP TO 38" A.F.F., SEE A-201 FOR LAYOUT.
B111	RADCU (SOUTH)	RUBS-1/2	RB-1	PTD-4/PWC-1	PTD-3/PWC-1	*PTD-1/PTD-3/PWC-1	*PTD-1/PTD-3/PWC-1	ACT-1	SEE RCP	*PTD-1 AT CASEWORK WALL ONLY, TYP. AT BED BAYS. SEE FLOOR FINISH PLAN FOR ACCENT PAINT AND WALL PROTECTION EXTENTS.
B112	PBC	RUBS-1/2	FC	PTD-1/PWC-1	PTD-1/PWC-1	PTD-1/PWC-1	PTD-3/PWC-1	ACT-1	SEE RCP	PTD-3 AT OUTSIDE OF CONTROL BOOTH.
B113	WORK ROOM	VCT-1	RB-1	PTD-1	PTD-3	PTD-1	PTD-1	ACT-2	SEE RCP	
B114	FLUORO CORRIDOR	EXIST	EXIST	EXIST	EXIST	EXIST	EXIST	EXIST	EXIST	
B116	SHARED STORAGE	EXIST	EXIST	EXIST	EXIST	EXIST	EXIST	EXIST	SEE RCP	
B117	CORRIDOR	EXIST	EXIST	EXIST	EXIST	EXIST	EXIST	EXIST	EXIST	
B120	AV STORAGE	EP-2	RB-1	EP-1	EP-1	EP-1	EP-1	EXP	SEE RCP	
B121	HSKP	EP-2	RB-1	EP-1	EP-1	EP-1	EP-1	EXP	SEE RCP	
B122	LOCKER	VCT-1	RB-1	PTD-1	PTD-3	PTD-1	PTD-1	ACT-1	SEE RCP	
B123	STORAGE	EXIST	EXIST	EXIST	PTD-1	EXIST	EXIST	EXIST	EXIST	
B124	ROOM 4	*VCT	*RB	*PTD	*PTD	*PTD	*PTD	*GWB	EXIST	*PATCH TO MATCH EXISTING FLOOR, WALL & CEILING MATERIALS.
B125	CHANGING	VCT-1	RB-1	PTD-1	PTD-1	PTD-1	PTD-1	ACT-1	SEE RCP	
B132	READING	*VCT	*RB	*PTD-6	*PTD-6	*PTD-6	*PTD-6	*ACT	EXIST	*PATCH TO MATCH EXISTING FLOOR, WALL & CEILING MATERIALS.
B134	ASSESSMENT	*VCT	*RB	PTD-1	PTD-1	PTD-1	PTD-1	EXIST	EXIST	*NEW VCT & BASE TO MATCH EXISTING RADCU (NORTH) B420.
B135	RADCU (NORTH)	EXIST	EXIST	PTD-1	PTD-1	PTD-1	PTD-1	ACT-1	SEE RCP	
B137	NOURISHMENT	VCT-2	RB-1	PTD-1	PTD-1	PTD-1	PTD-1	ACT-1	SEE RCP	
B140	READING	CPT-1	RB-1	PTD-6	PTD-6	PTD-6	PTD-6	ACT-1	SEE RCP	

FINISH LEGEND:

ACOUSTIC CEILING TILE:
ACT-1 USG, MARS CLIMAPLUS, #86985, 24"x24"x3/4", WHITE, WITH DXL SUSPENSION SYSTEM
ACT-2 USG, MARS CLIMAPLUS HIGH-NRC, #87100, 24"x24"x7/8", WHITE

BUMPER RAIL:
BR-1 MATCH EXISTING, SEE 18/A-500 FOR DETAIL

CARPET:
CPT-1 TANDUS FLOORING, BROADLOOM, 30313 FIRST IMPRESSIONS II, COLOR: 08604 GREAT TAN

CERAMIC FLOOR & WALL TILE:
CT-1 (FLOOR TILE) AMERICAN OLEAN, 2"x2" UNGLAZED MOSAICS, A52 BUFF GRANITE
CT-2 (WALL TILE, FIELD) AMERICAN OLEAN, 4"x4" MATTE, 0095 SNOW MIST
CT-3 (WALL TILE, ACCENT) AMERICAN OLEAN, 4"x4" MATTE, 0004 MT LIGHT SMOKE
CT-4 (WALL TILE, ACCENT) AMERICAN OLEAN, BULLNOSE 54449, 4"x4" MATTE, 0004 MT LIGHT SMOKE

CERAMIC TILE BASE:
CTB-1 AMERICAN OLEAN, COVE BASE A3401, 4"x4" MATTE, 0004 MT LIGHT SMOKE

CORNER GUARDS:
CG-1 *CG HEIGHT TO EXTEND FROM TOP OF BASE TO TOP OF DOOR FRAME (7'-2"), TYP.
CG-2 C/S ACROVYN 90°, SM SERIES, 2" WING, APPLIED, COLOR: MISSION WHITE
CG-2 C/S ACROVYN END WALL GUARD, SM SERIES, 2" WING, APPLIED, COLOR: MISSION WHITE
CG-3 C/S ACROVYN 135°, SM SERIES, 2" WING, APPLIED, COLOR: MISSION WHITE

CUBICLE CURTAIN:
STANDARD TEXTILE, UNDER THE SEA, COLOR: SPLASH

EPOXY PAINT:
EP-1 EPOXY WALL PAINT, TBD
EP-2 EPOXY PAINT WITH GRIT FOR FLOOR APPLICATION, TBD

PAINT:
PTD-1 IC1 PAINTS, (FIELD), #739 ANTIQUE WHITE
PTD-2 IC1 PAINTS, (DOOR/WINDOW TRIM), MMC#1 MEDIUM TAUPE
PTD-3 IC1 PAINTS, (ACCENT), 10GG 53/030 SOLVENIR
PTD-4 IC1 PAINTS, (ACCENT), 45Y1 53/151 STRAW
PTD-5 IC1 PAINTS, (ACCENT), 70GG 38/059 MOUNTAIN CREEK
PTD-6 IC1 PAINTS, (ACCENT), #1673 DARK SECRET, FLAT

PLASTIC LAMINATE:
PLAM-1 PRIONITE, HONEY MAPLE, WM951 SUEDE (VERTICAL SURFACES AT CASEWORK, U.N.O.)
PLAM-2 PRIONITE, OPTI GRAY CREPE, AG341 SUEDE (COUNTERTOP SURFACES AT HOLDING BAYS)
PLAM-3 PRIONITE, AZZURRA, AB081 SUEDE (COUNTERTOP SURFACES AT NURSE STATION B412)

PROTECTIVE WALL COVERING:
PWC-1 *PWC HEIGHT TO EXTEND FROM TOP OF BASE TO 48" A.F.F.
C/S ACROVYN, PEBBLETTE TEXTURE, .060" THICKNESS, PROVIDE HORIZONTAL & VERTICAL TRIM ACCESSORIES AS REQUIRED FOR COMPLETE INSTALLATION, COLOR: MISSION WHITE

RUBBER BASE:
RB-1 JOHNSTONE, 4" TRADITIONAL COVE BASE, USE MANUFACTURER'S LONGEST AVAILABLE COIL LENGTH, COLOR: 80 FAWN

RUBBER SHEET FLOORING:
RUBS-1 NORA, NORAPLAN ENVIRONCARE, 3.0 MM SHEET, COLD-WELD SEAMS, WITH INTEGRAL FLASH-COVE BASE, COLOR: 2780 PHANTOM MIST
RUBS-2 NORA, NORAPLAN ENVIRONCARE, 3.0 MM SHEET, COLD-WELD SEAMS, WITH INTEGRAL FLASH-COVE BASE COLOR: 2779 EVERGREEN PATH

SOLID SURFACE MATERIAL:
SSM-1 DUPONT, CORIAN, DOESKIN

VINYL COMPOSITION TILE:
VCT-1 ARMSTRONG, STANDARD EXCELON, IMPERIAL TEXTURE, COLOR: WASHED LINEN 51810
VCT-2 ARMSTRONG, STANDARD EXCELON, IMPERIAL TEXTURE, COLOR: DUSTY MILLER 51883

WOOD (DOORS):
WD-1 MATCH EXISTING WOOD SPECIES, CUT AND FINISH

GENERAL FINISH NOTES:

- SEE MANUFACTURER'S SPECIFICATIONS FOR ADDITIONAL INFORMATION REGARDING FINISH MATERIALS AND INSTALLATION INFORMATION.
- MATERIALS IN FINISH LEGEND ARE FROM MAINE MEDICAL CENTER'S FINISH STANDARDS. SUBSTITUTIONS WILL NOT BE ACCEPTED.
- DOOR AND WINDOW FRAMES TO BE PTD-2, UNLESS NOTED OTHERWISE.
- REFER TO RCP FOR SOFFIT HEIGHTS. ALL SOFFITS TO BE PTD-1, UNLESS NOTED OTHERWISE.
- ALL GWB CEILINGS TO BE PTD-1, UNLESS NOTED OTHERWISE.
- INTEGRAL BASE COLOR SHALL BE SYNONYMOUS WITH FLOOR COLOR AT THAT POINT, UNLESS NOTED OTHERWISE.
- ALL AREAS DISTURBED DURING CONSTRUCTION SHALL BE PATCHED TO MATCH EXISTING FINISHES.
- REFER TO FLOOR FINISH PLAN FOR WALL PROTECTION, CORNER GUARD AND BUMPER RAIL INFORMATION AND LOCATIONS.
- KOESTER TOPICAL TREATMENT WILL BE INSTALLED UNDER ALL NEW FLOOR FINISHES.

FINISH ABBREVIATIONS:

ACT ACOUSTIC CEILING TILE
BR BUMPER RAIL
CPT CARPET
CT CERAMIC TILE
CTB CERAMIC TILE BASE
CG CORNER GUARD
EP GYPSUM WALL BOARD
GWB PAINT
PLAM PLASTIC LAMINATE
PWC PROTECTIVE WALL COVERING
RCP REFLECTED CEILING PLAN
RB RUBBER BASE
RUBS RUBBER SHEET FLOORING
SSM SOLID SURFACE MATERIAL
VCT VINYL COMPOSITION TILE
WD WOOD

144 Free Street, Box 618
Portland, Maine 04104
Tel. (207) 775-3846
Fax. (207) 775-1070
www.smartinc.com

ARCHITECTURE
ENGINEERING
PLANNING
INTERIOR DESIGN
COMMISSIONING

SMART

LICENSED ARCHITECT
KRISTEN L. DAMUTH
No. 2788
STATE OF MAINE
2/1/2012

PROJECT NORTH

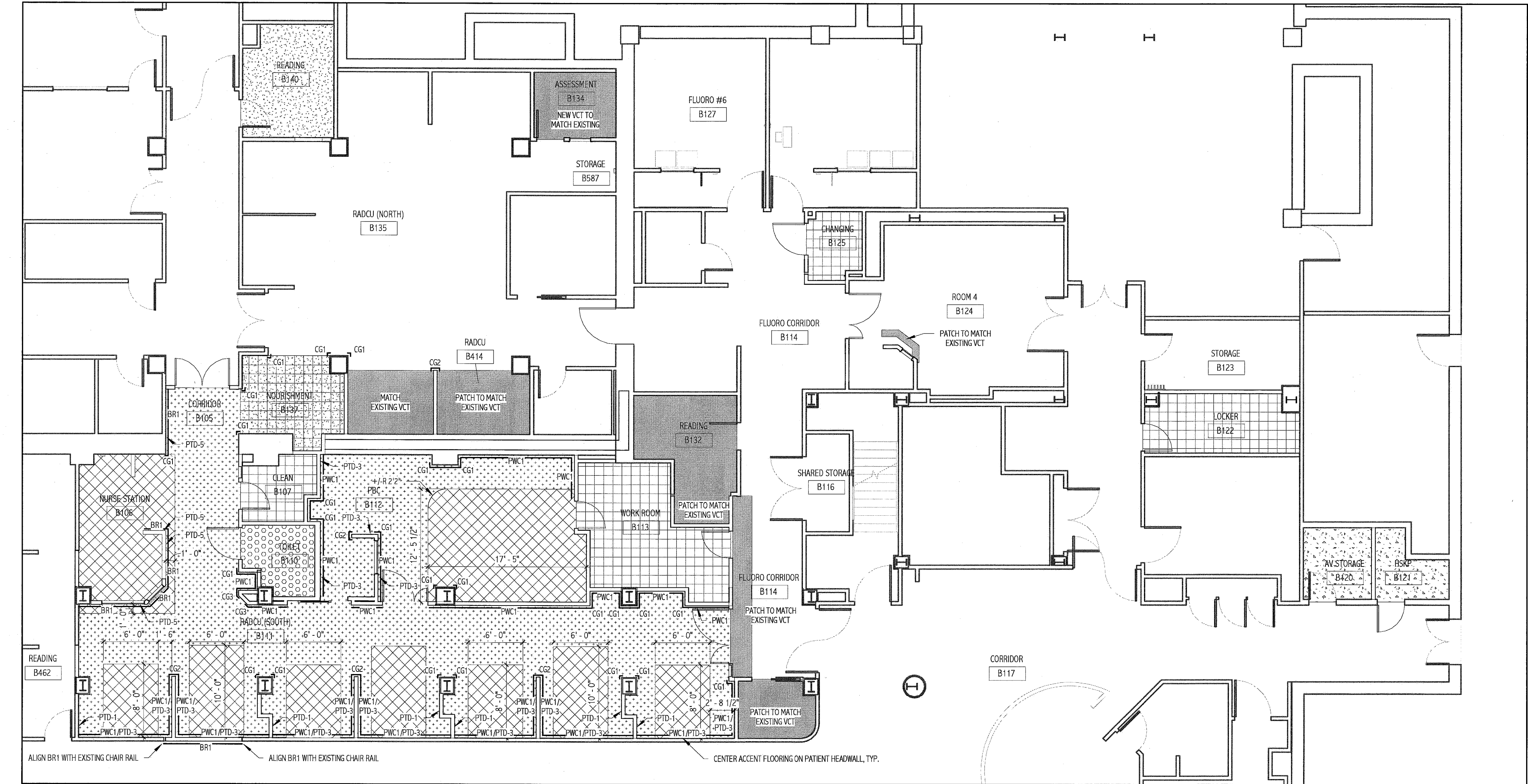
MAINE MEDICAL CENTER
HOLDING, RADCU & PBC RENOVATION
PORTLAND, ME
ISSUED FOR CONSTRUCTION
02.24.12

CURRENT ISSUE STATUS:
DATE: _____
DESCRIPTION: _____
REV: _____

GRAPHIC SCALE:
0" 1"

SCALE: As indicated
PROJECT MANAGER: KD
IC/DRAWN BY: ART
A/E OF RECORD: KD
PROJECT NO: 11063
DATE: 02.09.09
SHEET TITLE:
**INTERIOR FINISHES,
SCHEDULES &
DETAILS**

SHEET No. **A-600**



1 BASEMENT FLOOR FINISH PLAN
1/8" = 1'-0"

FLOOR FINISH NOTES:

- REFER TO FLOOR FINISH PLAN FOR LAYOUT OF FLOOR FINISH MATERIALS. REFER TO SCHEDULES FOR ACTUAL MATERIALS USED.
- EACH SQUARE IN THE CERAMIC FLOOR TILE GRID REPRESENTS A 2"x2" TILE.
- EACH SQUARE IN THE VCT FLOOR TILE GRID REPRESENTS A 12"x12" TILE.
- ALL NEW FLOORING MATERIALS TO RUN BENEATH NEW CASEWORK, UNLESS NOTED OTHERWISE.
- PROVIDE RESILIENT RUBBER FLOOR TRANSITIONS AT ALL REQUIRED LOCATIONS.

KEY NOTE LEGEND:

CG1 CORNER GUARD, 90 DEGREE, HEIGHT: FROM TOP OF BASE TO 7'-2" A.F.F.
CG2 CORNER GUARD, END WALL, HEIGHT: FROM TOP OF BASE TO 7'-2" A.F.F.
CG3 CORNER GUARD, 135-DEGREE, HEIGHT: FROM TOP OF BASE TO 7'-2" A.F.F.
BR1 BUMPER RAIL, WOOD AND SOLID SURFACE TO MATCH EXISTING, SEE 18/A-500. ALIGN TOP HEIGHT WITH EXISTING.
PWC1 PROTECTIVE WALL COVERING, HEIGHT: FROM TOP OF BASE TO 48" A.F.F.

*NOTE: TERMINATE BUMPER RAIL 2" FROM BUILT-IN CASEWORK, CORNER GUARDS OR WHERE CHAIR RAIL IS SHOWN TO END IN FLOOR PLAN.

FLOOR MATERIAL LEGEND:

CPT-1
CT-1
MATCH EXISTING
RUBS-1
RUBS-2
EP-2
VCT-1
VCT-2