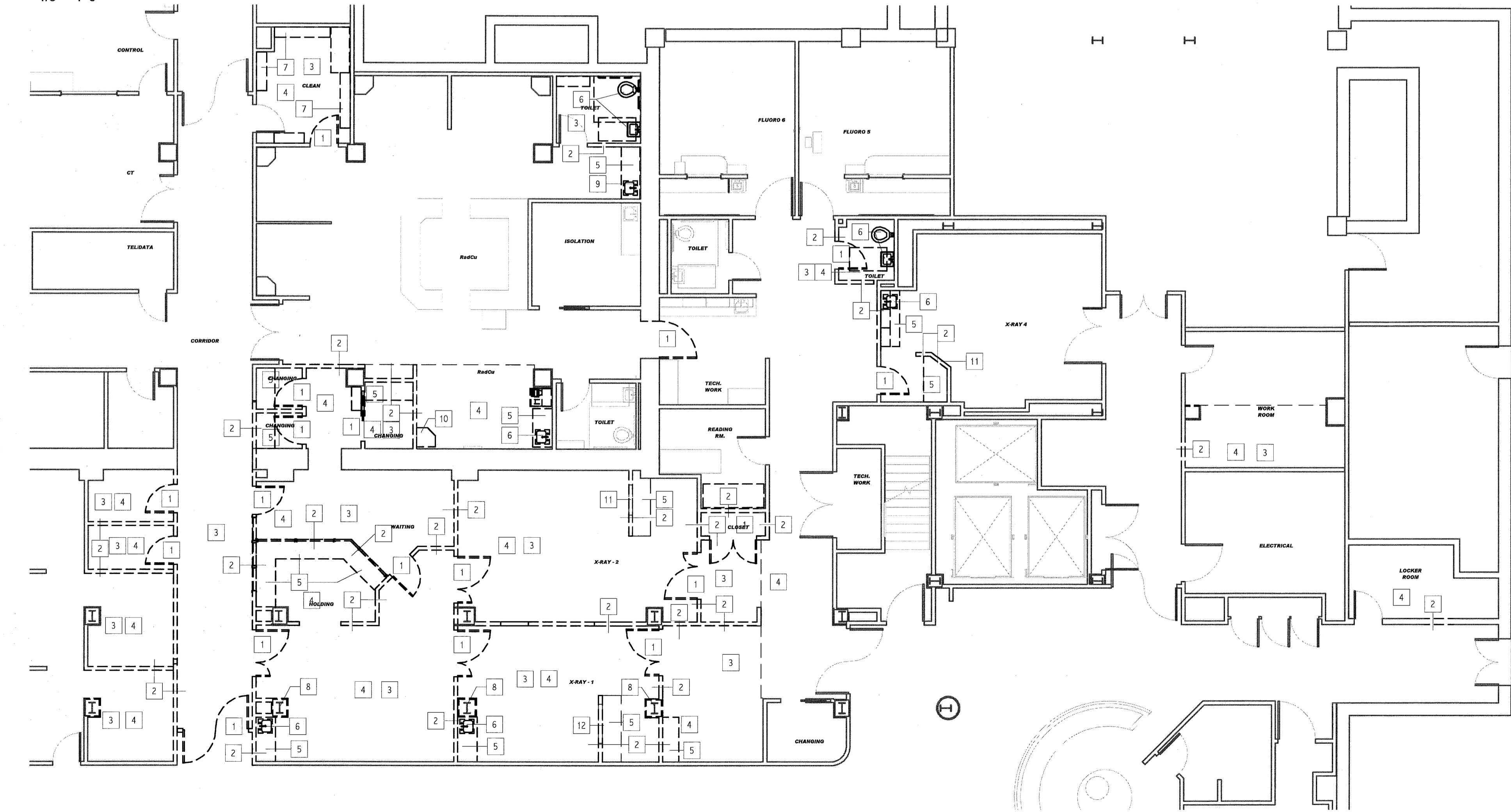


PARTITION LEGEND:

F1	FURRING PARTITION -7/8" METAL HAT SECTION 24" O.C. TO DECK -(1) LAYER 5/8" GIB, TO DECK	
F2	FURRING PARTITION -3 5/8" 25 GA. STEEL STUDS @ 24" O.C. TO DECK -(1) LAYER 5/8" INTERIOR GYPSUM BOARD TO DECK, TAGGED SIDE	
K1	1 HOUR RATED PARTITION, ULL #H415 -(1) LAYER 5/8" TYPE X INTERIOR GYPSUM BOARD TO DECK -3 5/8" 25 GA. STEEL STUDS @ 16" O.C. TO DECK U.N.O. -FULL BATT INSULATION -(1) LAYER 5/8" TYPE X INTERIOR GYPSUM BOARD TO DECK -SEAL ALL PENETRATIONS	
K1E	EXISTING WALL CONSTRUCTION TO BE VERIFIED BY CONTRACTOR. MODIFY WALL CONSTRUCTION TO MEET ULL #H415 WALL CONSTRUCTION & REVIEW WITH ARCHITECT.	
S1	SOUND ATTENUATED PARTITION, STC 45 -(1) LAYER 5/8" INTERIOR GYPSUM BOARD TO DECK -3 5/8" 25 GA. STEEL STUDS @ 16" O.C. TO DECK U.N.O. -FULL BATT INSULATION -(1) LAYER 5/8" INTERIOR GYPSUM BOARD TO DECK -SEAL ALL PENETRATIONS FOR SOUND.	
S2	SOUND ATTENUATED PARTITION, STC 45 -(1) LAYER 5/8" INTERIOR GYPSUM BOARD TO 6" ABOVE CEILING -3 5/8" 25 GA. STEEL STUDS @ 16" O.C. TO DECK U.N.O. -FULL BATT INSULATION -(1) LAYER 5/8" INTERIOR GYPSUM BOARD TO 6" ABOVE CEILING	
S3	SOUND ATTENUATED PARTITION, STC 45 -(1) LAYER 5/8" INTERIOR GYPSUM BOARD TO DECK -4" 25 GA. STEEL STUDS @ 16" O.C. TO DECK U.N.O. -FULL BATT INSULATION -(1) LAYER 5/8" INTERIOR GYPSUM BOARD TO DECK -SEAL ALL PENETRATIONS FOR SOUND.	
P	PROVIDE BLOCKING AND 1 LAYER OF PAINTED (BLACK) 5/8" FIRE TREATED PLYWOOD TAGGED SIDE OVER GIB.	
LL	SUBSTITUTE TAGGED SIDE GIB FOR 1/2" LEAD LINED GIB TO 7'-0" AFF	
C	SUBSTITUTE TAGGED SIDE GIB FOR CEMENTITIOUS BACKER BOARD UP TO 48" AFF	

○ PARTITION LEGEND
3/4" = 1'-0"

② SCOPE OF WORK PLAN
1/8" = 1'-0"



① BASEMENT LAYOUT PLAN
1/8" = 1'-0"

DEMOLITION PLAN KEY NOTES:

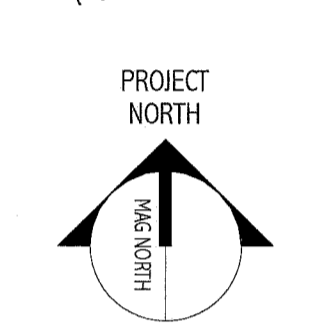
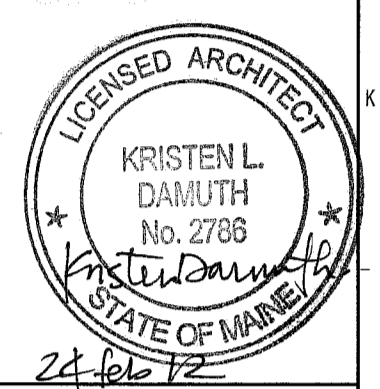
- REMOVE DOOR, FRAME AND HARDWARE. COORDINATE WITH OWNER THOSE ITEMS TO BE SALVAGED PRIOR TO REMOVAL.
- REMOVE WALL OR PORTION OF WALL INDICATED BY DASHED LINE. PRIOR TO REMOVAL, IDENTIFY IF WALL IS LOAD BEARING. IF FOUND TO BE A BEARING WALL NOTIFY ARCHITECT IMMEDIATELY.
- REMOVE FINISH FLOOR MATERIAL (IF ANY) AND BASE. PREPARE SURFACE FOR NEW FINISHES AS REQUIRED BY SCHEDULE AND SPECIFICATIONS.
- REMOVE CEILING SYSTEM COMPLETE, I.E. FRAMING MEMBERS, TRACKS, WIRES, LIGHTING, ETC. COORDINATE EXTENTS WITH SCOPE OF NEW WORK.
- REMOVE CASEWORK AND COUNTER TOP. COORDINATE WITH OWNER THOSE ITEMS TO BE SALVAGED PRIOR TO REMOVAL.
- REMOVE PLUMBING FIXTURE. SEE PLUMBING DRAWINGS FOR DETAILS.
- REMOVE BIN STORAGE AND MOUNTING SYSTEM. PREPARE FOR RELOCATION.
- REMOVE COLUMN WRAP AND LIGHT GAUGE FRAMING AROUND STRUCTURAL COLUMN. COORDINATE WITH NEW WORK.
- REMOVE PLUMBING FIXTURE AND PREPARE FOR REINSTALL IN NEW COUNTER.
- REMOVE CASEWORK AND COUNTERTOP FOR REINSTALLATION.
- REMOVE WINDOW AND WINDOW FRAME. PREPARE FOR REINSTALLATION IN NEW WALL.
- REMOVE WINDOW AND FRAME COMPLETE.

GENERAL DEMOLITION NOTES:

- COORDINATE EXTENT OF DEMOLITION WITH LOCATIONS OF PARTITIONS DESCRIBED ON PLANS AND WITH LOCATIONS OF FINISHES NOTED AS EXISTING TO REMAIN.
- ANY WALL, PARTITION, OR SURFACE DISTURBED BECAUSE OF NEW WORK OR DEMOLITION SHALL BE PATCHED AND FINISHED CONTINUOUSLY TO THE NEAREST CORNER UNLESS NOTED OTHERWISE. MATCH EXISTING ADJACENT CONSTRUCTION FINISHES, CONTINUITY, AND FIRE RATINGS UNLESS NOTED OTHERWISE.
- PROTECT ALL FINISHES, MATERIALS AND EQUIPMENT NOTED AS EXISTING TO REMAIN. CONTRACTOR SHALL BE RESPONSIBLE TO REPLACE ALL FINISHES, MATERIALS, AND EQUIPMENT DAMAGED DURING CONSTRUCTION.
- DIMENSIONS INDICATED +/- ARE EXISTING CONDITION DIMENSIONS TO BE VERIFIED IN FIELD.
- CONTRACTOR TO HOLD PRE-DEMOLITION MEETING WITH OWNER, CONSTRUCTION MANAGER, SUB-CONTRACTORS, ETC. PRIOR TO BEGINNING DEMOLITION WORK TO REVIEW HOSPITALS POLICIES, NOISE CONTROL MEASURES, ETC.
- CLEARLY IDENTIFY AND TAG MECHANICAL, PLUMBING, AND ELECTRICAL FIXTURES OR EQUIPMENT THAT ARE STILL IN USE PRIOR TO DEMOLITION TO AVOID ACCIDENTAL REMOVAL.
- WALLS INDICATED WITH A DASHED LINE ARE TO BE REMOVED COMPLETE. IF WALL IS BEARING PRIOR TO REMOVAL, IF SO, CONTACT ARCHITECT/ENGINEER IMMEDIATELY.
- SEE M.E.P. DRAWINGS FOR THE SCOPE OF DEMOLITION IN THOSE DISCIPLINES.

144 Elm Street, 6th Fl.,
Portland, Maine 04101
Tel: (207) 772-3846
Fax: (207) 772-1070
www.smartinc.com

ARCHITECTURE
ENGINEERING
PLANNING
INTERIOR DESIGN
COMMISSIONING



MAINE MEDICAL CENTER
HOLDING, RADCU & PBC RENOVATION
PORTLAND, ME
ISSUED FOR CONSTRUCTION
02.24.12
CURRENT ISSUE STATUS:

REV	DESCRIPTION	DATE

GRAPHIC SCALE:
0" 1"

SCALE: As indicated
PROJECT MANAGER: JKD
IC/DRAWN BY: ART
A/E OF RECORD: JKD
PROJECT NO: 11063
DATE: 2.24.12

SHEET TITLE:
DEMOLITION AND
SCOPE OF WORK
PLAN

SHEET No.
A-100