

GENERAL NOTE:

1. SEE SHEET E-001 FOR LEGEND AND GENERAL NOTES.

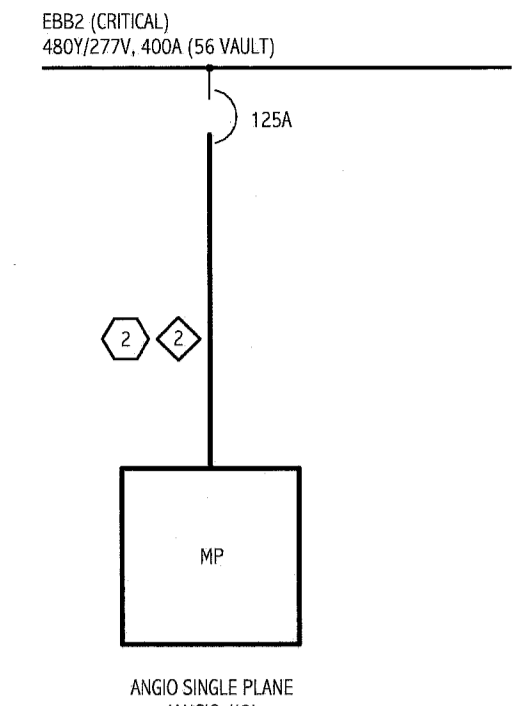
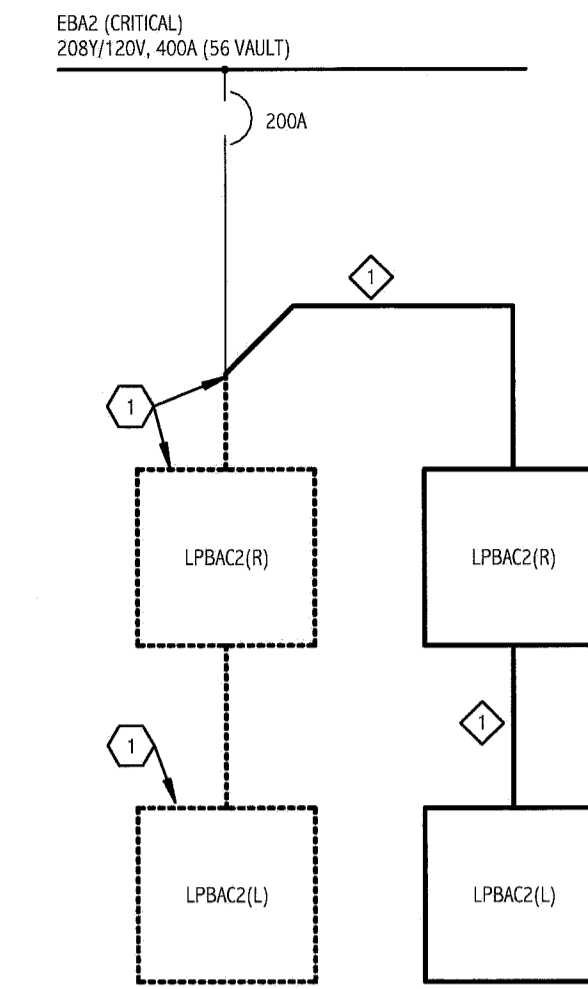
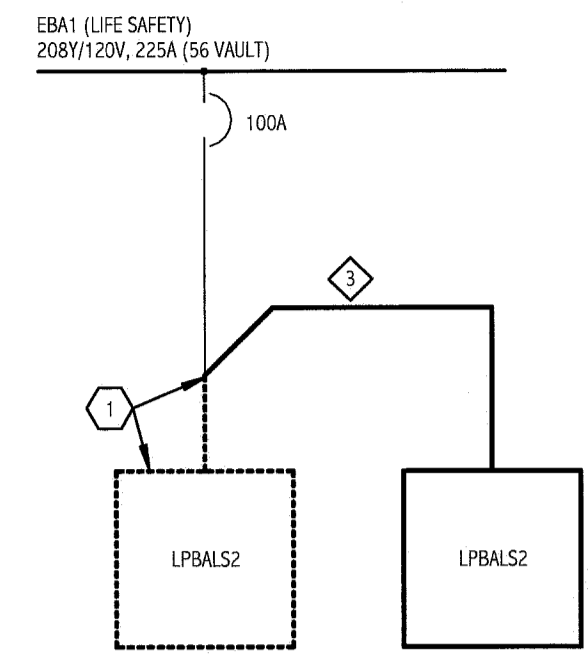
KEYED NOTES:

- 1 SPICE FEEDER TO FEED NEW PANELBOARD. TRANSFER CIRCUITS TO NEW PANELBOARD. DEMO EXISTING PANELBOARD ONCE CIRCUITS ARE TRANSFERRED.
- 2 EXISTING FEEDER TO ANGIO ROOM MAY BE REUSED IF OF SUFFICIENT SIZE.

CABLE SCHEDULE:

- ◆ #4/0 & #6 GND, 2 1/2" C
- ◆ #1 & #1 GND, 1 1/2" C
- ◆ #2 & #8 GND, 1 1/2" C

1 PARTIAL ONE-LINE DIAGRAMS
12" = 1'-0"



DIRECTORY	KVA LOAD			CMT. NO.	BKR. AMPS	A	B	C	BKR. AMPS	CMT. NO.	KVA LOAD			DIRECTORY
	A	B	C								A	B	C	
	27.0			1	100					2				SPACE
POLYDOROS A100 CABINET (PU1)		27.0		3						4				SPACE
			27.0	5						6				SPACE
SYSTEM CABINET (SC1) VIA UPS	5.0			7						8				SPACE
		5.0		9						10				SPACE
			5.0	11						12				SPACE
SPACE				13						14				SPACE
SPACE				15						16				SPACE
SPACE				17						18				SPACE
SUB-TOTAL	32.0	32.0	32.0								0.0	0.0	0.0	SUB-TOTAL

VOLTAGE: 480Y/277V 3 PHASE 4 WIRE 125 AMP BUS TOTAL KVA A 32.0 PANEL NO. ANGIO #2 (MP) (CRITICAL)

MAIN BREAKER 125 AMP TRIP TOTAL KVA B 32.0 LOCATION

MOUNTING: RECESSED TOTAL KVA C 32.0

SC RATING: 18,000 AIC TOTAL KVA 96.0

NOTES: 1) MAIN BREAKER SHALL BE PROVIDED WITH AN UNDERVOLTAGE TRIP COIL. ANGIO MACHINE EPO SWITCHES SHALL BE WIRED IN SERIES WITH COIL.

DIRECTORY	KVA LOAD			CMT. NO.	BKR. AMPS	A	B	C	BKR. AMPS	CMT. NO.	KVA LOAD			DIRECTORY
	A	B	C								A	B	C	
(1) RECEPTACLE - B457	1.0*			1	20					2				LIGHTING (1)
(1) RECEPTACLE - GCB120		1.0*		3	20					4				RECEPTACLE - B456 (1)
(1) RECEPTACLE - B456			1.0*	5	20					6				RECEPTACLE - B456 (1)
(1) RECEPTACLE - B456	1.0*			7	20					8				RECEPTACLE - B456 (1)
(1) RECEPTACLE - B456		1.0*		9	20					10				RECEPTACLE - B456 (1)
(1) RECEPTACLE - B456			1.0*	11	20					12				RECEPTACLE - B456 (NURSE CALL) (1)
(1) RECEPTACLE - B456	1.0*			13	20					14				RECEPTACLE - B456 (1)
(1) RECEPTACLE - B456		1.0*		15	20					16				RECEPTACLE - B456 (1)
(1) RECEPTACLE - B456			1.0*	17	20					18				UPS - CT SCAN B452 (1)
(1) RECEPTACLE - B456	1.0*			19	20					20				SPARE
SPARE				21	20					22				SPARE
SPARE				23	20					24				SPARE
SPACE				25	20					26				SPACE
SPACE				27	20					28				SPACE
SPACE				29	20					30				SPACE
SUB-TOTAL	4.0*	3.0*	3.0*								4.0*	3.0*	3.0*	SUB-TOTAL

VOLTAGE: 208Y/120V 3 PHASE 4 WIRE 100 AMP BUS TOTAL KVA A 8.0* PANEL NO. LPBALS2 (LIFE SAFETY)

MAIN LUGS ONLY 100 AMP LUGS TOTAL KVA B 6.0* LOCATION

MOUNTING: RECESSED TOTAL KVA C 6.0*

SC RATING: 22,000 AIC TOTAL KVA 20.0*

NOTES: (1) EXISTING CIRCUIT TRANSFERRED TO NEW PANELBOARD LOCATION. (2) EXISTING CIRCUIT PARTIALLY DELETED; REMAINDER TRANSFERRED TO NEW PANELBOARD. (3) EXISTING CIRCUIT PARTIALLY DELETED; REMAINDER TRANSFERRED TO NEW PANELBOARD; NEW ADDITIONAL LOAD. (4) NEW CIRCUIT (5) EXISTING CIRCUIT DELETED; CIRCUIT TO BECOME SPARE. * = ESTIMATED LOAD

DIRECTORY	KVA LOAD			CMT. NO.	BKR. AMPS	A	B	C	BKR. AMPS	CMT. NO.	KVA LOAD			DIRECTORY
	A	B	C								A	B	C	
(5) SPARE				1	20					2				ANGIO 3 RECEPT (1)
(1) RECEPTACLE - GCB125	1.0*			3	20					4				LTG - B445, 427, 429, 448, 450 (1)
(1) RECEPTACLE - B417		1.0*		5	20					6				LTG - B445 (1)
(1) RECEPTACLE - B420	1.0*			7	20					8				LTG - B445 (1)
(1) RECEPTACLE - B433		1.0*		9	20					10				RECESSED LTS - ANGIO 1 (1)
(1) RECEPTACLE - ANGIO B433			1.0*	11	20					12				SURGICAL LIFT (1)
(1) RECEPTACLE - B423	1.0*			13	20					14				ANGIO 3 FCU (1)
(1) RECEPTACLE - B423		1.0*		15	20					16				RECEPTACLE - B554 (1)
(1) RECEPTACLE - B448			1.0*	17	20					18				RECEPTACLE - B405 (1)
(1) RECEPTACLE - B265	1.0*			19	20					20				RECEPTACLE - B405 (1)
(1) RECEPTACLE - B466		1.0*		21	20					22				RECEPT - ANGIO 1 (1)
(1) RECEPTACLE - GCB115			1.0*	23	20					24				RECEPT - ANGIO 1 CONTROL ROOM (1)
(1) RECEPTACLE - B263	1.0*			25	20					26				RECEPTACLE - B447 (1)
(1) RECEPTACLE - B417		1.0*		27	20					28				SPARE (5)
(1) RECEPTACLE - B420			1.0*	29	20					30				SPARE (5)
SUB-TOTAL	4.0*	5.0*	5.0*								5.0*	4.0*	4.0*	SUB-TOTAL

VOLTAGE: 208Y/120V 3 PHASE 4 WIRE 225 AMP BUS TOTAL KVA A 9.0* PANEL NO. LPBAC2(R) (CRITICAL)

MAIN LUGS ONLY 200 AMP LUGS TOTAL KVA B 9.0* LOCATION

MOUNTING: RECESSED TOTAL KVA C 9.0*

SC RATING: 22,000 AIC TOTAL KVA 27.0*

NOTES: (1) EXISTING CIRCUIT TRANSFERRED TO NEW PANELBOARD LOCATION. (2) EXISTING CIRCUIT PARTIALLY DELETED; REMAINDER TRANSFERRED TO NEW PANELBOARD. (3) EXISTING CIRCUIT PARTIALLY DELETED; REMAINDER TRANSFERRED TO NEW PANELBOARD; NEW ADDITIONAL LOAD. (4) NEW CIRCUIT (5) EXISTING CIRCUIT DELETED; CIRCUIT TO BECOME SPARE. * = ESTIMATED LOAD

DIRECTORY	KVA LOAD			CMT. NO.	BKR. AMPS	A	B	C	BKR. AMPS	CMT. NO.	KVA LOAD			DIRECTORY
	A	B	C								A	B	C	
(1) RECEPTACLE - B457	1.0*			31	20					32				LIGHTING (1)
(1) RECEPTACLE - GCB125		1.0*		33	20					34				RECEPTACLE - B456 (1)
(1) RECEPTACLE - B456			1.0*	35	20					36				RECEPTACLE - B456 (1)
(1) RECEPTACLE - B456	1.0*			37	20					38				RECEPTACLE - B456 (1)
(1) RECEPTACLE - B456		1.0*		39	20					40				RECEPTACLE - B456 (1)
(1) RECEPTACLE - B456			1.0*	41	20					42				RECEPTACLE - B456 (NURSE CALL) (1)
(1) RECEPTACLE - B456	1.0*			43	20					44				RECEPTACLE - B456 (1)
(1) RECEPTACLE - B456		1.0*		45	20					46				RECEPTACLE - B456 (1)
(1) RECEPTACLE - B456			1.0*	47	30					48				UPS - CT SCAN B452 (1)
(1) RECEPTACLE - B456	1.0*			49	20					50				SPARE
SPARE				51	20					52				SPARE
SPARE				53	20					54				SPACE
SPACE				55	20					56				SPACE
SPACE				57	20					58				SPACE
SPACE				59	20					60				SPACE
SUB-TOTAL	4.0*	5.0*	5.0*								3.0*	3.0*	3.0*	SUB-TOTAL

VOLTAGE: 208Y/120V 3 PHASE 4 WIRE 225 AMP BUS TOTAL KVA A 7.0* PANEL NO. LPBAC2(L) (EXISTING-NORMAL)

MAIN LUGS ONLY 225 AMP LUGS TOTAL KVA B 8.0* LOCATION

MOUNTING: RECESSED TOTAL KVA C 8.0*

SC RATING: 22,000 AIC TOTAL KVA 23.0*

NOTES: (1) EXISTING CIRCUIT TO REMAIN. (2) EXISTING CIRCUIT TO BE DELETED AND BECOME SPARE. (3) NEW CIRCUIT, EXISTING CIRCUIT DELETED. (4) NEW CIRCUIT FROM SPARE CIRCUIT BREAKER. (5) NEW CIRCUIT BREAKER. (6) EXISTING CIRCUIT PARTIALLY DELETED. (7) EXISTING CIRCUIT PARTIALLY DELETED; NEW ADDITIONAL LOAD. * = ESTIMATED LOAD

DIRECTORY	KVA LOAD			CMT. NO.	BKR. AMPS	A	B	C	BKR. AMPS	CMT. NO.	KVA LOAD			DIRECTORY
	A	B	C								A	B	C	
(1) RECEPTACLE - B423	1.0*			31	20					32				RECEPTACLE - B424 (1)
(1) RECEPTACLE - B424		1.0*		33	20					34				RECEPT - ANGIO B446 (1)
(1) RECEPTACLE - B423			1.0*	35	20					36				SPARE
(1) RECEPTACLE - B418	1.0*			37	20					38				SPARE (5)
(1) RECEPTACLE - B424		1.0*		39	20					40				SPARE (5)
(1) RECEPTACLE - B429			1.0*	41	20					42				SPARE (5)
(1) RECEPTACLE - B450, B425	1.0*			43	20					44				SPARE (5)
(1) RECEPTACLE - GCB115		1.0*		45	20					46				ROOM 443, AUTODOORS (1)
(1) RECEPTACLE - ANGIO 1/2 CONTROL ROOM			1.0*	47	20					48				ROOMS 203, 347 (1)
(1) SMOKE DAMPERS	1.0*			49	20					50				?
(1) ?		1.0*		51	20					52				?
(1) ?			1.0*	53	20					54				?
(1) ?	1.0*			55	20					56				?
(1) ?			1.0*	57	20					58				?
(1) RECEPT - ANGIO B433 (ANGIO 3)			1.0*	59	20					60				RECEPTS, PYNIS - ANGIO 2 (B447) (1)
CLOCK, STERS LIGHT, LIFT - ANGIO 2 (B447)	0.6			61	20					62				RECEPTS - ANGIO 2 (B447) (1)
DEDICATED RECEPT - MONITORING - ANGIO 2 (B447)		0.4		63	20					64				RECEPTS - ANGIO 2 (B447) (1)
PHYSIO RECEPT - ANGIO 2 (B447)		1.2		65	15					66				RECEPTS - ANGIO 2 (B447) (1)
MMV UPS#1	1.2			67	30					68				SPARE
MP & ME1 UNDERVOLTAGE TRIP CIRCUIT		1.2		69	30					70				SPARE
			0.1	71	20					72				SPARE
SUB-TOTAL	6.8*	6.6*	6.3*								3.6*	4.6*	3.2*	SUB-TOTAL

VOLTAGE: 208Y/120V 3 PHASE 4 WIRE 225 AMP BUS TOTAL KVA A 10.4* PANEL NO. LPBAC2(L) (CRITICAL)

MAIN LUGS ONLY 200 AMP LUGS TOTAL KVA B 11.2* LOCATION

MOUNTING: RECESSED TOTAL KVA C 9.5*

SC RATING: 22,000 AIC TOTAL KVA 31.1*

NOTES: (1) EXISTING CIRCUIT TRANSFERRED TO NEW PANELBOARD LOCATION. (2) EXISTING CIRCUIT PARTIALLY DELETED; REMAINDER TRANSFERRED TO NEW PANELBOARD. (3) EXISTING CIRCUIT PARTIALLY DELETED; REMAINDER TRANSFERRED TO NEW PANELBOARD; NEW ADDITIONAL LOAD. (4) NEW CIRCUIT (5) EXISTING CIRCUIT DELETED; CIRCUIT TO BECOME SPARE. * = ESTIMATED LOAD

DIRECTORY	KVA LOAD			CMT. NO.	BKR. AMPS	A	B	C	BKR. AMPS	CMT. NO.	KVA LOAD			DIRECTORY
	A	B	C								A	B	C	
(1) SPARE				1	20					2				RECEPT - EQUIPMENT B445 (5)
(1) RECEPTACLE - ANGIO B433	1.0*			3	20					4				RECEPT - EQUIPMENT B445 (5)
(1) RECEPTACLE - ANGIO B433		1.0*		5	20					6				RECEPT - EQUIPMENT B445 (5)
(1) RECEPTACLE - ANGIO B433			1.0*	7	20					8				RECEPT - EQUIPMENT B445 (5)
(1) RECEPTACLE - ANGIO B433	1.0*			9	20					10				RECEPT - EQUIPMENT B445 (5)
(1) RECEPTACLE - ANGIO B433			1.0*	11	20					12				RECEPT - EQUIPMENT B445 (5)
(1) RECEPTACLE - ANGIO B433		1.0*		13	20					14				RECEPT - ANGIO 1/2 CONTROL ROOM (7)
(1) RECEPTACLE - ANGIO B433			1.0*	15	20					16				SPARE (2)
(1) RECEPTACLE - ANGIO B433	1.0*			17	20					18				SPARE (2)
(1) RECEPTACLE - ANGIO B433		1.0*		19	20					20				SPARE (2)
(1) RECEPTACLE - ANGIO B433			1.0*	21	20					22				SPARE (2)
(1) RECEPTACLE - ANGIO B433	1.0*			23	20					24				SPARE (2)
(1) RECEPTACLE - ANGIO B433		1.0*		25	20					26				SPARE (2)
(1) RECEPTACLE - ANGIO B433			1.0*	27										