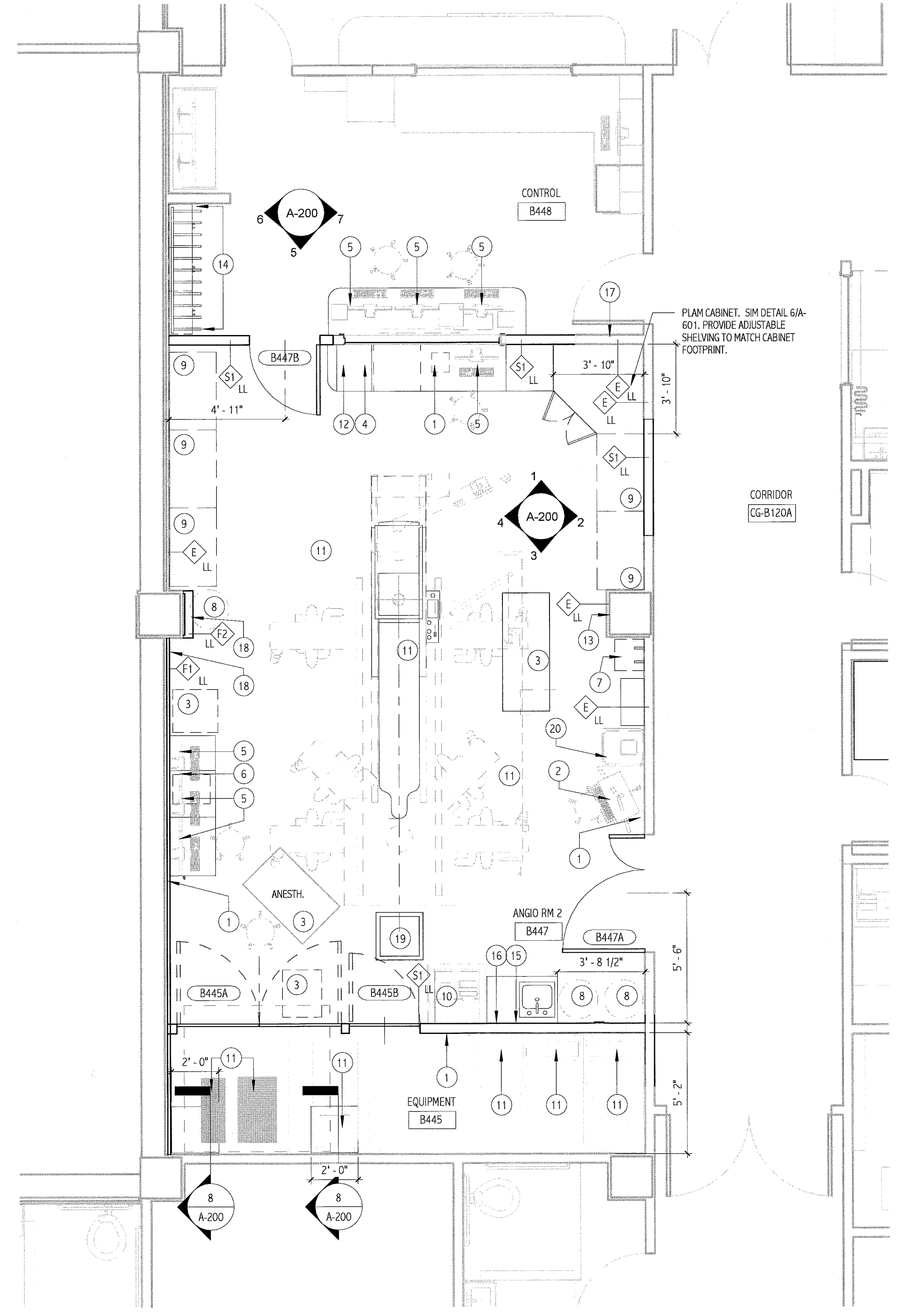


1 BASEMENT LAYOUT PLAN
1/4" = 1'-0"



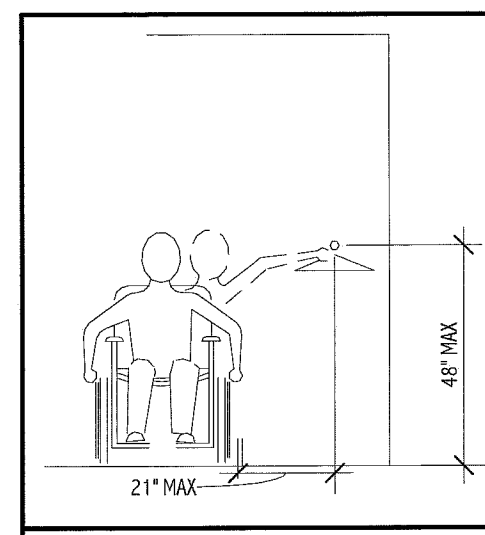
2 BASEMENT LAYOUT PLAN
1/4" = 1'-0"

DEMOLITION PLAN KEY NOTES:

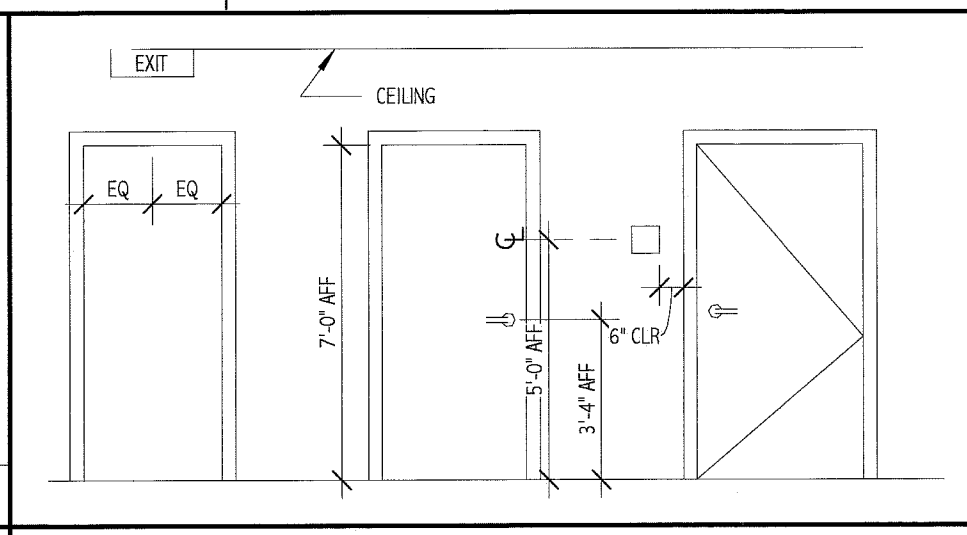
- 1 REMOVE DOOR, FRAME AND HARDWARE COMPLETE.
- 2 REMOVE DOOR, FRAME AND HARDWARE COMPLETE AND PREPARE FRO RELOCATION. COORDINATE WITH NEW WORK FOR NEW LOCATION.
- 3 REMOVE WALL OR PORTION OF WALL INDICATED BY DASHED LINE. PRIOR TO REMOVAL, IDENTIFY IF WALL IS LOAD BEARING. IF FOUND TO BE A BEARING WALL NOTIFY ARCHITECT IMMEDIATELY.
- 4 REMOVE WALL OR PORTION OF WALL INDICATED BY DASHED LINE FOR . PREPARE FOR NEW DOOR/WINDOW OPENING. COORDINATE WITH NEW WORK FOR LOCATION AND SIZE.
- 5 REMOVE FINISH FLOOR MATERIAL (IF ANY) AND BASE. PREPARE SURFACE FOR NEW FINISHES AS REQUIRED BY SCHEDULE AND SPECIFICATIONS.
- 6 REMOVE CEILING SYSTEM COMPLETE. I.E. FRAMING MEMBERS, TRACKS, WIRES, LIGHTING, ETC. COORDINATE EXTENTS WITH SCOPE OF NEW WORK.
- 7 REMOVE CASEWORK AND COUNTER TOP. COORDINATE WITH OWNER THOSE ITEMS TO BE SALVAGED PRIOR TO REMOVAL.
- 8 REMOVE PLUMBING FIXTURE. CAP OFF EXISTING PLUMBING PIPING AT WALL/FLOOR.
- 9 REMOVE PORTION OF FLOOR/SLAB FOR ELECTRICAL TRENCH/CONDUIT. SEE ELECTRICAL AND VENDOR DRAWINGS FOR LOCATIONS.

GENERAL DEMOLITION NOTES:

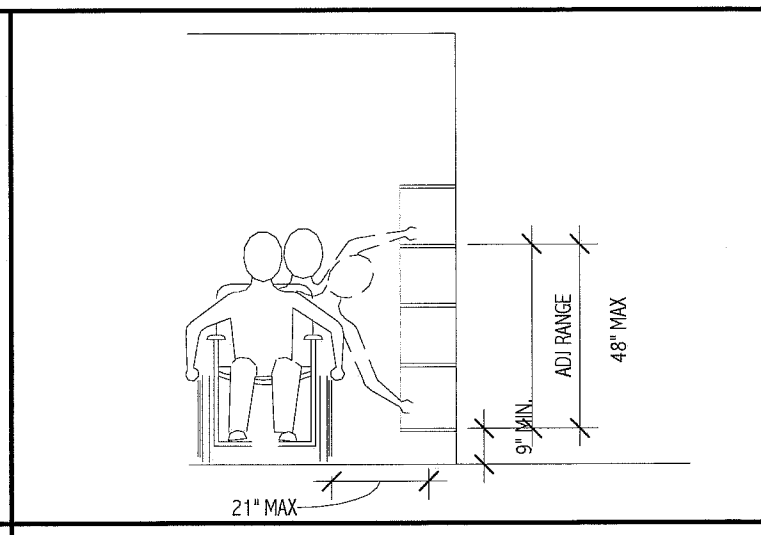
1. COORDINATE EXTENT OF DEMOLITION WITH LOCATIONS OF PARTITIONS DESCRIBED ON PLANS AND WITH LOCATIONS OF FINISHES NOTED AS EXISTING TO REMAIN.
2. ANY WALL, PARTITION, OR SURFACE DISTURBED BECAUSE OF NEW WORK OR DEMOLITION SHALL BE PATCHED AND FINISHED CONTINUOUSLY TO THE NEAREST CORNER UNLESS NOTED OTHERWISE. MATCH EXISTING ADJACENT CONSTRUCTION FINISHES, CONTINUITY, AND FIRE RATINGS UNLESS NOTED OTHERWISE.
3. PROTECT ALL FINISHES, MATERIALS AND EQUIPMENT NOTED AS EXISTING TO REMAIN. CONTRACTOR SHALL BE RESPONSIBLE TO REPLACE ALL FINISHES, MATERIALS, AND EQUIPMENT DAMAGED DURING CONSTRUCTION.
4. DIMENSIONS INDICATED +/- ARE EXISTING CONDITION DIMENSIONS TO BE VERIFIED IN FIELD.
5. CONTRACTOR TO HOLD PRE-DEMOLITION MEETING WITH OWNER, CONSTRUCTION MANAGER, SUB-CONTRACTORS, ETC. PRIOR TO BEGINNING DEMOLITION WORK TO REVIEW HOSPITALS POLICIES, NOISE CONTROL MEASURES, ETC.
6. CLEARLY IDENTIFY AND TAG MECHANICAL, PLUMBING, AND ELECTRICAL FIXTURES OR EQUIPMENT THAT ARE STILL IN USE PRIOR TO DEMOLITION TO AVOID ACCIDENTAL REMOVAL.
7. WALLS INDICATED WITH A DASHED LINE ARE TO BE REMOVED COMPLETE. IF WALL IS BEARING PRIOR TO REMOVAL, IF SO, CONTACT ARCHITECT/ENGINEER IMMEDIATELY.
8. SEE M.E.P. DRAWINGS FOR THE SCOPE OF DEMOLITION IN THOSE DISCIPLINES.



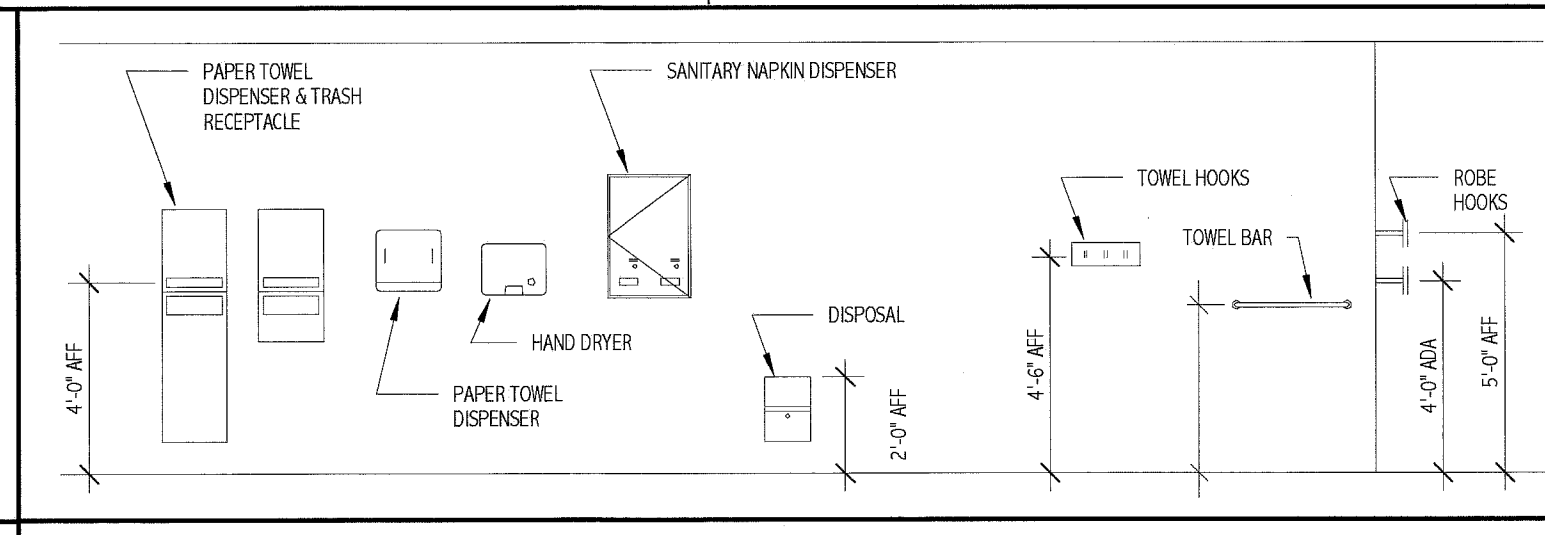
CLOSET ROD



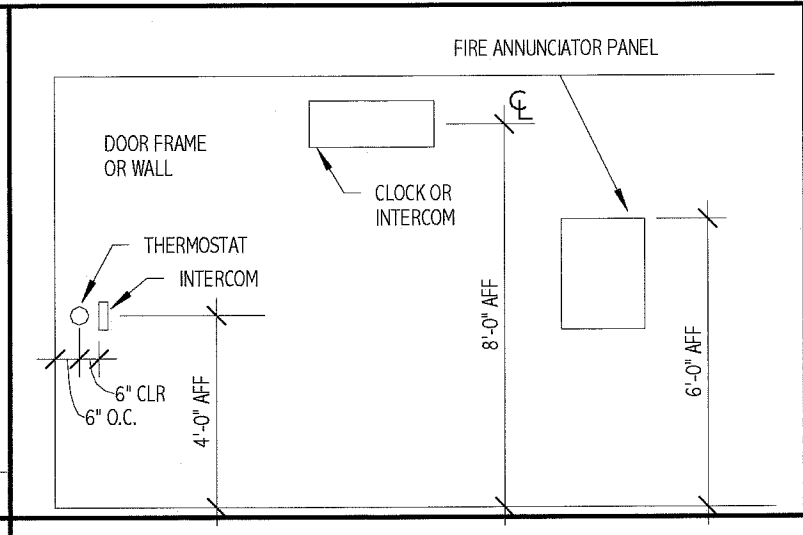
DOOR FIXTURE AND SIGNAGE



SHELVES



ACCESSORIES



ELECTRICAL DEVICES

GENERAL NOTES:

1. SEE SHEET G-001 FOR LEGEND, ABBREVIATIONS AND GENERAL NOTES.
2. FURNITURE/EQUIPMENT DASHED IN BY OTHERS IS INDICATED FOR COORDINATION. PROVIDE BLOCKING FOR ALL MOUNTED CASEWORK, FURNITURE, EQUIPMENT AND ANY OTHER NIC ITEMS.
3. ALL OWNER PROVIDED KEYBOARD TRAYS AND CPU HOLDERS INSTALLED BY OTHERS.
4. REFER TO FINISH SCHEDULES FOR WALL PROTECTION LOCATIONS.
6. EXISTING INTERIOR PARTITIONS TO REMAIN EXCEPT WHERE WORK REQUIRES CUTTING, PATCHING AND FINISHING OF WALL TO ACCOMMODATE UTILITY LOCATION.
7. TYPICAL WALL TYPE - U.N.O.

EQUIPMENT AND ACCESSORIES SCHEDULE

TAG	DESCRIPTION	PROVIDE
1	PHONE	O/C
2	COMPUTER CART	O/O
3	CART	O/O
4	MULTI MODALITY VIEWER (UNDER COUNTER)	V
5	MONITOR	O/O
6	COPY/PRINT/FAX	O/O
7	WALL MOUNTED CATHETER STORAGE	C/C
8	TRASH BIN	O/O
9	STORAGE CABINET (40"W X 24"D X 72"H)	O/O
10	PYXIS, MEDICAL REF. & CART	O/O
11	VENDOR EQUIPMENT	V
12	CONTRAST WARMER	O/O
13	WHITE BOARD (24" x 24")	O/C
14	LEAD APRON RACK	O/C
15	SOAP DISPENSER	O/C
16	PAPER TOWEL DISPENSER	O/C
17	PAR EX	E
18	MED GAS - SEE PLUMBING DRAWINGS	C/C
19	CEILING MED GAS PANEL - SEE PLUMBING DRAWINGS	C/C
20	HAMPER	O/O
21		
22		
23		
24		
25		
26		
27		

C/C: CONTRACTOR FURNISHED/CONTRACTOR INSTALLED
 O/C: OWNER FURNISHED/CONTRACTOR INSTALLED
 O/O: OWNER FURNISHED/OWNER INSTALLED
 E: EXISTING
 V: VENDOR

NOTE: PROVIDE TOILET ACCESSORIES IN ACCORDANCE WITH MAINE MED. STANDARDS

141 Fox Street, Box 618
 Portland, Maine 04104
 Tel: (207) 772-3846
 Fax: (207) 772-1000
 www.smrtinc.com

ARCHITECTURE
 ENGINEERING
 PLANNING
 INTERIOR DESIGN
 COMMISSIONING

SMRT

LICENSED ARCHITECT
 DEREK J. VELLEUX
 No. 3185
 STATE OF MAINE
 1.27.12

PROJECT NORTH

MAINE MEDICAL CENTER
 ANGIO SINGLE PLANE - ROOM 2
 PORTLAND, ME

ISSUED FOR PERMITTING
 01.27.12

CURRENT ISSUE STATUS: _____ DATE: _____
 DESCRIPTION: _____
 REV: _____

GRAPHIC SCALE: 0" = 1"

SCALE: As indicated

PROJECT MANAGER: DIV
 I/C/DRAWN BY: ART
 A/E OF RECORD: DIV
 PROJECT NO.: 11127
 DATE: XX.XX.XX

SHEET TITLE:
**BASEMENT
 DEMOLITION AND
 FLOOR PLAN**

SHEET No. **A-101**