

Bramhall Radiology
FLUORO RENOVATIONS
PORTLAND, ME

ISSUED FOR CONSTRUCTION
08.24.10

CURRENT ISSUE STATUS:

REV	DESCRIPTION	DATE
0	ISSUED FOR CONSTRUCTION	8.24.10

GRAPHIC SCALE:
0" 1"

SCALE: 1/8" = 1'-0"
PROJECT MANAGER: DIV
DRAWN BY: CDS
A/E OF RECORD: IPP
PROJECT NO.: 09223-01
DATE: 8.24.10

SHEET TITLE:
FLUORO BASEMENT
SYSTEMS PLAN

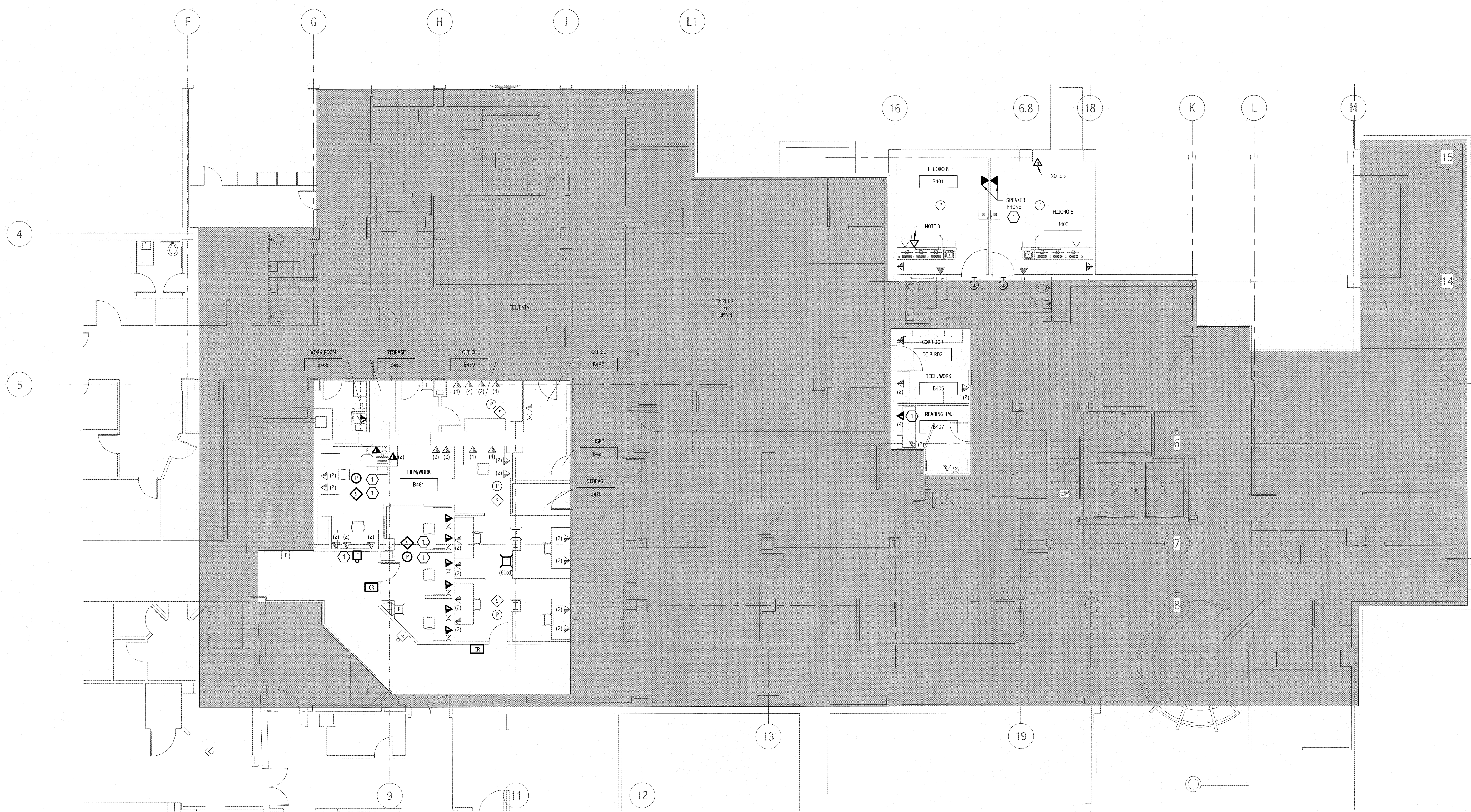
SHEET No.
EY 101

NOTES:

- SEE SHEET E-001 FOR LEGEND AND GENERAL NOTES.
- NEW FIRE ALARM DEVICES SHALL BE COMPATIBLE WITH EXISTING HONEYWELL SYSTEM. EXTEND EXISTING INITIATION AND NOTIFICATION APPLIANCE CIRCUITS AS REQUIRED. PROVIDE PROGRAMMING FOR ADDITIONAL DEVICES.
- PROVIDE BUS ETHERNET 10/100/1000 MBIT NETWORK JACK. TO CONNECT EQUIPMENT TO PHILIPS REMOTE SERVICE NETWORK. REFER TO PHILIPS INSTALLATION DRAWING SHEET "N1" FOR CONNECTIVITY OPTIONS.

KEYED NOTE:

- ① RELOCATED POSITION. SEE ED101 FOR EXISTING LOCATION.



① FLUORO BASEMENT SYSTEMS PLAN
1/8" = 1'-0"