

Bramhall Radiology  
FLUORO RENOVATIONS  
PORTLAND, ME

**ISSUED FOR CONSTRUCTION**  
08.24.10

CURRENT SHEET STATUS

REV	DATE	DESCRIPTION
0		ISSUED FOR CONSTRUCTION

GRAPHIC SCALE:  
0' 1'

SCALE: As Indicated

PROJECT MANAGER: DIV  
K/DRAWN BY: CTS

A/E OF RECORD: JPP  
PROJECT NO: 09022-01  
DATE: 8.24.10

SHEET TITLE:  
**ENLARGED POWER  
PLAN SHEET 1**

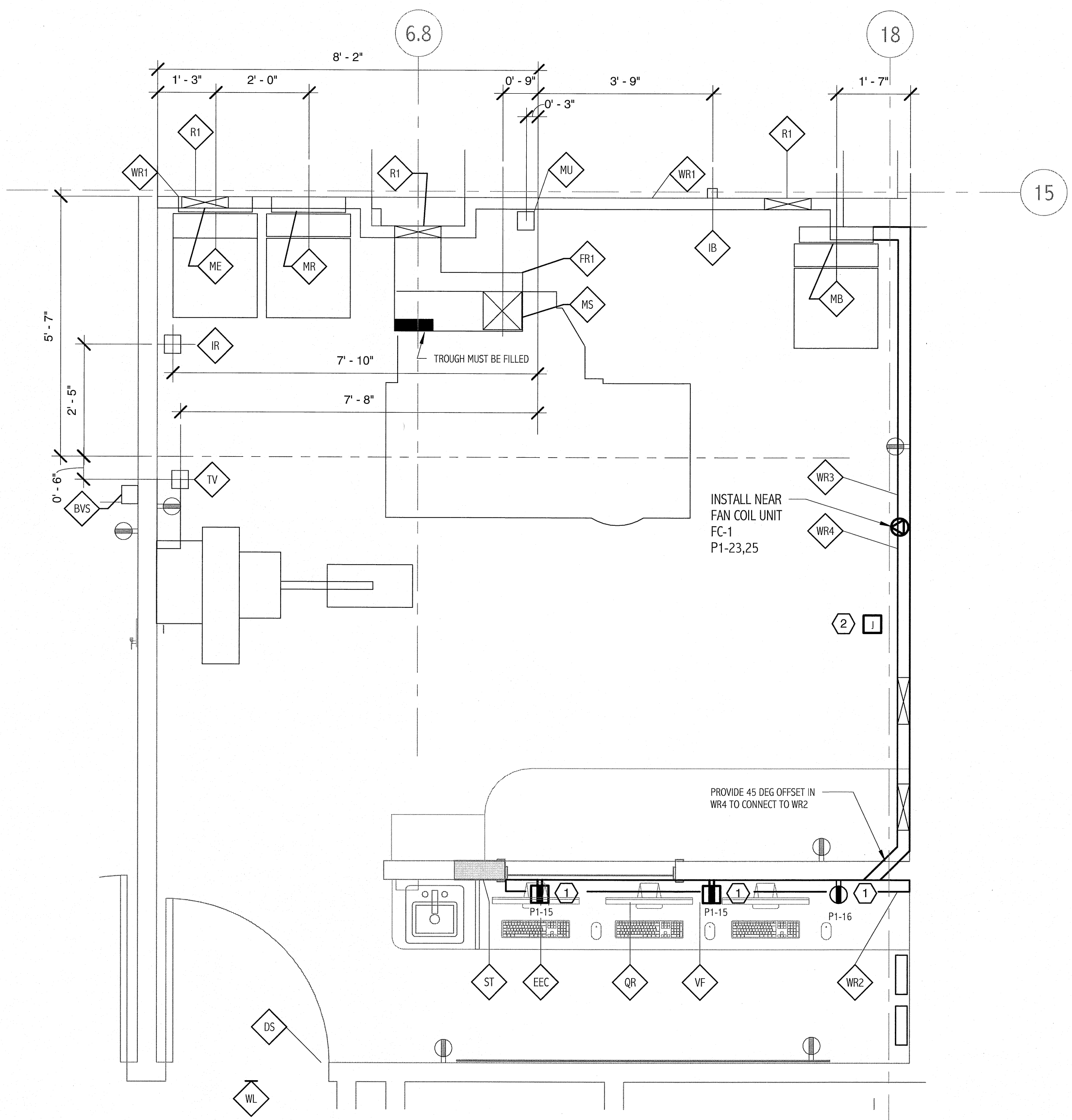
SHEET No.  
**EP 401**

**NOTES:**

- SEE SHEET E-001 FOR LEGEND AND GENERAL NOTES.
  - SEE SHEET EP101 FOR LOCATION OF PANELBOARD P1.
  - REFER TO PHILIPS INSTALLATION DRAWING FOR EASY DIAGNOSTIC ELEV. N-EAS100612.
- # REFERS TO ITEM ON PHILIPS DRAWINGS

**KEYED NOTES:**

- INSTALL RECEPTACLE BETWEEN "WR2" AND COUNTER.
- PROVIDE CONNECTION AT CEILING TO PATIENT LIFT. COORDINATE EXACT LOCATION WITH EQUIPMENT. CIRCUIT # P1-21.



**ROOM 5 FLUORO BASEMENT POWER  
PLAN**  
1/2" = 1'-0"

ITEM #	DEVICE REQUIREMENTS FOR FLUORO ROOMS 5 THE ELECTRICAL CONTRACTOR IS TO PROVIDE (UNLESS NOTED OTHERWISE)
CB1	480V, 3 PHASE, 100A CIRCUIT BREAKER WITH SHUNT TRIP IN A NEMA 1 ENCLOSURE.
CB2	480V, 3 PHASE, 30A CIRCUIT BREAKER WITH SHUNT TRIP IN A NEMA 1 ENCLOSURE.
ST	SHUNT TRIP/EMERGENCY OFF BUTTON, LARGE, RED, MUSHROOM HEAD BUTTON WITH CONTACTS TO OPERATE SHUNT TRIP FEATURE OF CB1 AND CB2 SIMULTANEOUSLY.
WB	INSTALL A 19 1/4"W x 6 7/8" x 4"D FLANGED TERMINAL WALL BOX WITH REMOVABLE SCREW-TYPE COVER PLATE FURNISHED BY PHILIPS. SURFACE MOUNT 75" AFF TO TOP OF BOX. CUT TOP AND/OR BOTTOM OF BOX AS REQUIRED TO CONNECT TO "WR1".
ME	INSTALL A 19 1/4"W x 6 7/8" x 4"D FLANGED TERMINAL WALL BOX WITH REMOVABLE SCREW-TYPE COVER PLATE FURNISHED BY PHILIPS. SURFACE MOUNT 75" AFF TO TOP OF BOX. CUT TOP AND/OR BOTTOM OF BOX AS REQUIRED TO CONNECT TO "WR1".
MR	INSTALL A 19 1/4"W x 6 7/8" x 4"D FLANGED TERMINAL WALL BOX WITH REMOVABLE SCREW-TYPE COVER PLATE FURNISHED BY PHILIPS. SURFACE MOUNT 75" AFF TO TOP OF BOX. CUT TOP AND/OR BOTTOM OF BOX AS REQUIRED TO CONNECT TO "WR1".
FB	8"W x 6"L x 6"D CEILING BOX, FLUSH MOUNTED WITH REMOVABLE SCREW-TYPE COVER PLATE.
MR	GROMMET OPENING ON TOP OF "FR1". EXACT SIZE TO BE DETERMINED BY PHILIPS.
FR1	EXISTING FLOOR TRENCH. EXISTING RACEWAY TO BE MODIFIED TO ACCOMMODATE FLUSH MOUNTING OF ED ELEV. FLOORPLATE.
TV	8"W x 6"L x 4"D CEILING BOX, FLUSH MOUNTED WITH REMOVABLE SCREW-TYPE COVER PLATE.
IR	6"W x 6"L x 4"D CEILING BOX, FLUSH MOUNTED WITH REMOVABLE SCREW-TYPE COVER PLATE. MOUNT IN BOX TO BOX COVER. LOCATION SHOWN IS RECOMMEND LOCATION AND MAY BE REVISED. VERIFY EXACT LOCATION WITH PHILIPS.
BVS	6"W x 6"L x 4"D WALL BOX WITH REMOVABLE SCREW-TYPE COVER PLATE. FLUSH MOUNT 39" AFF TO BOTTOM OF BOX.
IB	4"W x 4"L x 4"D WALL BOX WITH REMOVABLE SCREW-TYPE COVER PLATE. FLUSH MOUNT 84" AFF TO BOTTOM OF BOX. LOCATION SHOWN IS RECOMMEND LOCATION AND MAY BE REVISED. VERIFY EXACT LOCATION WITH PHILIPS.
RI	EXISTING SURFACE MOUNTED RISER DUCT WITH REMOVABLE SCREW-TYPE COVER PLATE FROM FINISHED FLOOR TO "WR1".
NR	GROMMETTED CABLE OPENING ON "WR2". LOCATION SHOWN IS RECOMMEND LOCATION AND MAY BE REVISED. VERIFY EXACT LOCATION WITH PHILIPS.
EEC	GROMMETTED CABLE OPENING ON "WR2". LOCATION SHOWN IS RECOMMEND LOCATION AND MAY BE REVISED. VERIFY EXACT LOCATION WITH PHILIPS.
VR	GROMMETTED CABLE OPENING ON "WR2". LOCATION SHOWN IS RECOMMEND LOCATION AND MAY BE REVISED. VERIFY EXACT LOCATION WITH PHILIPS.
WR1	EXISTING WALL RACEWAY WITH REMOVABLE SCREW-TYPE COVERPLATE. SURFACE MOUNTED 30" +/- AFF.
WR2	10"W x 4"D WALL RACEWAY WITH 3 COMPARTMENTS AND REMOVABLE SCREW-TYPE COVERPLATE. SURFACE MOUNT BELOW COUNTER FOR ENTIRE LENGTH. CONNECT TO WR4 LOCATED IN EXAM ROOM. MOUNT AT SAME HEIGHT AS WR1.
WR3	EXISTING WALL RACEWAY WITH REMOVABLE SCREW-TYPE COVERPLATE. SURFACE MOUNTED 84" AFF +/-.
WR4	10"W x 4"D WALL RACEWAY WITH 3 COMPARTMENTS AND REMOVABLE SCREW-TYPE COVERPLATE. CONNECT TO WR2 IN CONTROL ROOM AND WR1 IN EXAM ROOM. MOUNT AT SAME HEIGHT AS WR1.
WL	WARNING LIGHT. PROVIDE SURFACE MOUNTED X-RAY ON FIXTURE ABOVE DOOR. X-RAY ON LIGHT SHALL BE SURE-LITES LP76-G8 OR EQUAL.
DS	DOOR LIMIT SWITCH. 120V, 5A RATED SWITCH CONTACTS TO OPEN WHEN DOOR IS OPEN. MOUNT IN UPPER CORNER ON STRIKE SIDE OF MAIN ENTRY DOOR.

CABLE AND CONDUIT REQUIREMENTS - FLUORO ROOM 5				
FROM ITEM #	TO ITEM #	CONDUIT QTY AND SIZE	CABLE	REMARKS
CB1	ST	(1) - 3/4"	2 #12 & #12 GND	CONDUIT & CABLE PROVIDED BY THE ELECTRICAL CONTRACTOR.
CB2	ST	(1) - 3/4"	2 #12 & #12 GND	CONDUIT & CABLE PROVIDED BY THE ELECTRICAL CONTRACTOR.
CB1	ME	(1) - 2"	BY PHILIPS	CONDUIT PROVIDED BY THE ELECTRICAL CONTRACTOR; CABLES FURNISHED BY PHILIPS. INSTALLED BY THE ELECTRICAL CONTRACTOR.
CB2	MR	(1) - 1 1/2"	BY PHILIPS	CONDUIT PROVIDED BY THE ELECTRICAL CONTRACTOR; CABLES FURNISHED BY PHILIPS. INSTALLED BY THE ELECTRICAL CONTRACTOR.
MR	WB	(1) - 1/2"	2 #12 & #12 GND	CONDUIT & CABLE PROVIDED BY THE ELECTRICAL CONTRACTOR.
MR	FB	(1) - 1/2"	2 #12 & #12 GND	CONDUIT & CABLE PROVIDED BY THE ELECTRICAL CONTRACTOR.
ME	BVS	(1) - 2"	BY PHILIPS	CONDUIT PROVIDED BY THE ELECTRICAL CONTRACTOR; CABLES FURNISHED AND INSTALLED BY PHILIPS. PROVIDE PULL STRING.
MR	BVS	(1) - 2"	BY PHILIPS	CONDUIT PROVIDED BY THE ELECTRICAL CONTRACTOR; CABLES FURNISHED AND INSTALLED BY PHILIPS. PROVIDE PULL STRING.
MR	BVS	(1) - 2"	BY PHILIPS	CONDUIT PROVIDED BY THE ELECTRICAL CONTRACTOR; CABLES FURNISHED AND INSTALLED BY PHILIPS. PROVIDE PULL STRING.
MB	TV	(1) - 1 1/2"	BY PHILIPS	CONDUIT PROVIDED BY THE ELECTRICAL CONTRACTOR; CABLES FURNISHED AND INSTALLED BY PHILIPS. PROVIDE PULL STRING.
MB	TV	(1) - 1 1/2"	BY PHILIPS	CONDUIT PROVIDED BY THE ELECTRICAL CONTRACTOR; CABLES FURNISHED AND INSTALLED BY PHILIPS. PROVIDE PULL STRING.
MR	IR	(1) - 2"	BY PHILIPS	CONDUIT PROVIDED BY THE ELECTRICAL CONTRACTOR; CABLES FURNISHED AND INSTALLED BY PHILIPS. PROVIDE PULL STRING.
MR	IB	(1) - 2"	BY PHILIPS	CONDUIT PROVIDED BY THE ELECTRICAL CONTRACTOR; CABLES FURNISHED AND INSTALLED BY PHILIPS. PROVIDE PULL STRING.
ME	MU	(1) - 2 1/2"	BY PHILIPS	CONDUIT PROVIDED BY THE ELECTRICAL CONTRACTOR; CABLES FURNISHED AND INSTALLED BY PHILIPS. PROVIDE PULL STRING.
ME	MU	(1) - 2"	BY PHILIPS	CONDUIT PROVIDED BY THE ELECTRICAL CONTRACTOR; CABLES FURNISHED AND INSTALLED BY PHILIPS. PROVIDE PULL STRING.
MR	MU	(1) - 2 1/2"	BY PHILIPS	CONDUIT PROVIDED BY THE ELECTRICAL CONTRACTOR; CABLES FURNISHED AND INSTALLED BY PHILIPS. PROVIDE PULL STRING.
MR	MU	(1) - 2 1/2"	BY PHILIPS	CONDUIT PROVIDED BY THE ELECTRICAL CONTRACTOR; CABLES FURNISHED AND INSTALLED BY PHILIPS. PROVIDE PULL STRING.