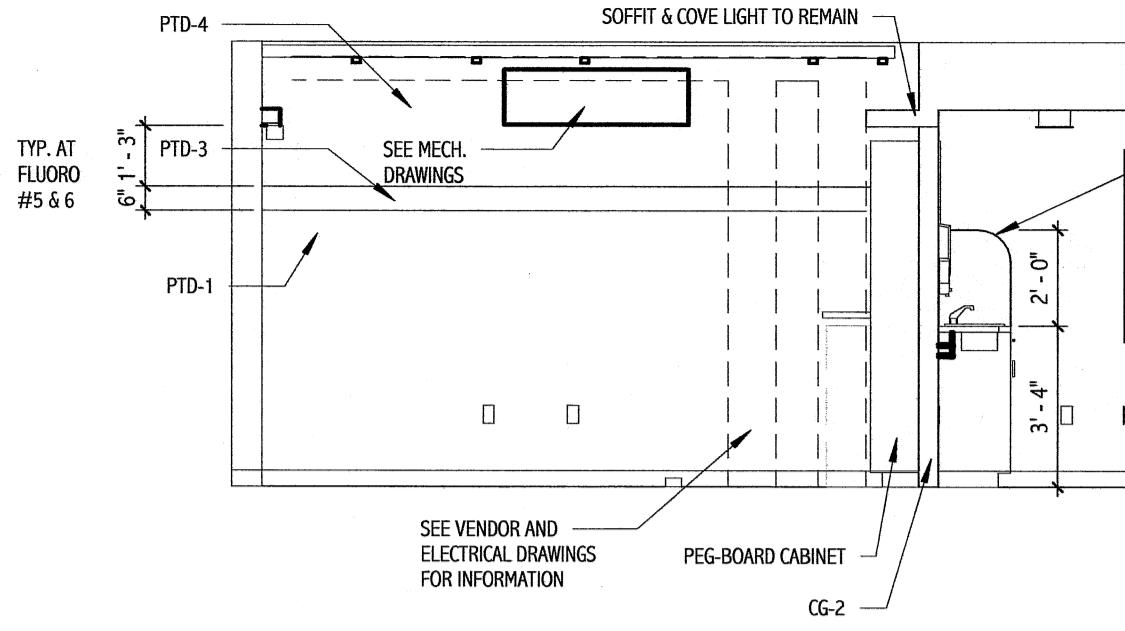
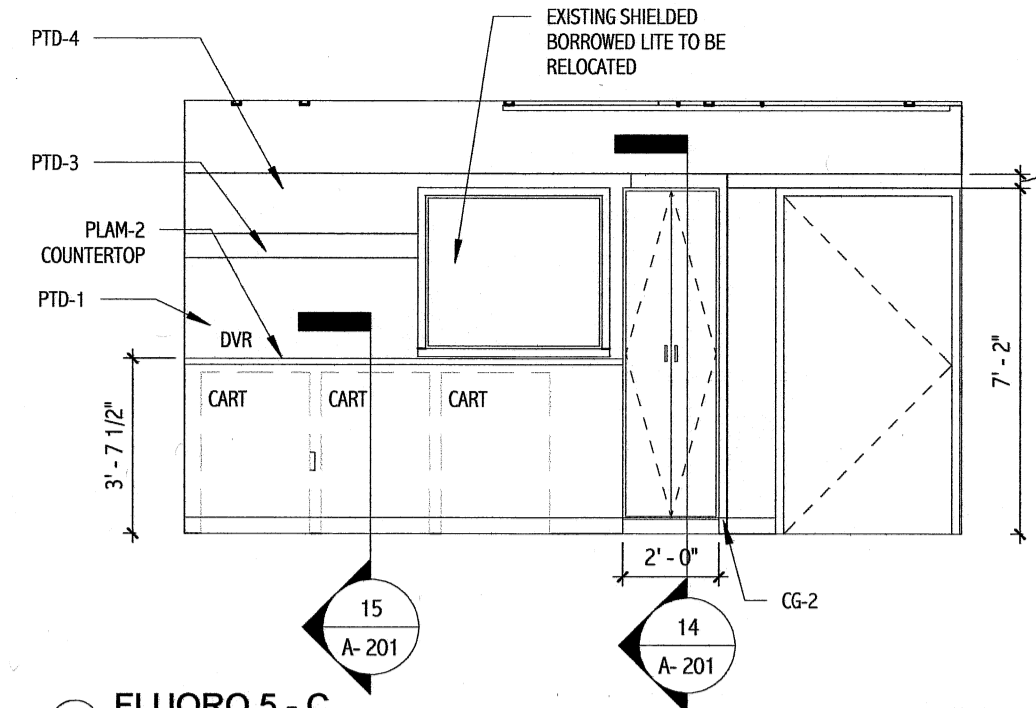


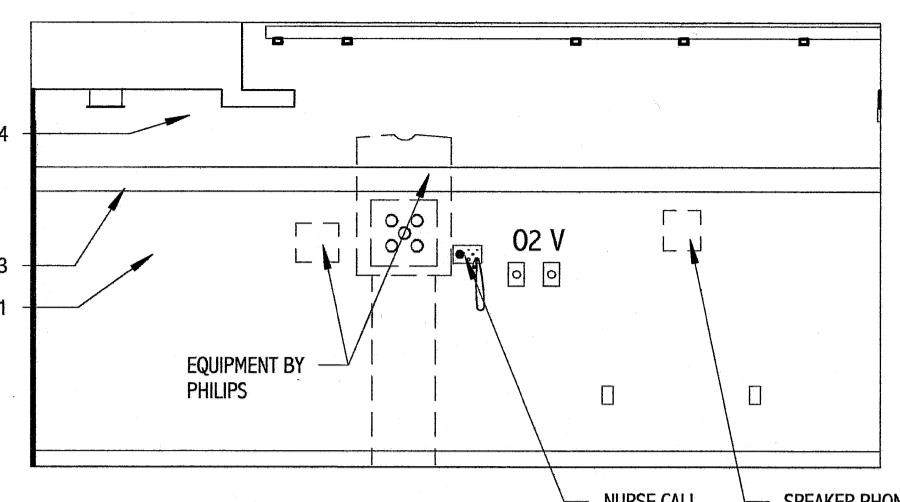
1 FLUORO 5 - A  
1/4" = 1'-0"



2 FLUORO 5 - B  
1/4" = 1'-0"



3 FLUORO 5 - C  
1/4" = 1'-0"



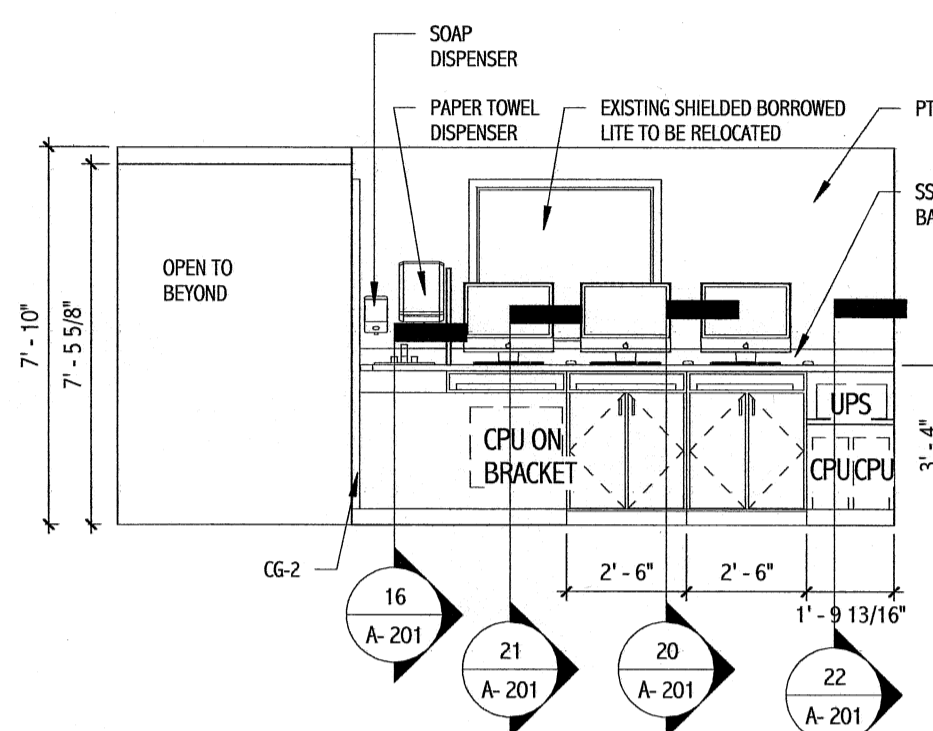
4 FLUORO 5 - D  
1/4" = 1'-0"

**GENERAL ELEVATION NOTES:**

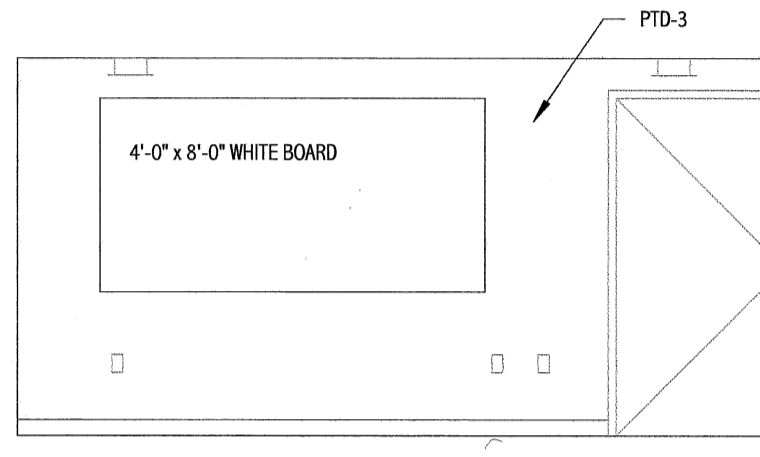
1. SEE A-001 FOR MOUNTING HEIGHTS.
2. CONTRACTOR TO FIELD VERIFY ALL DIMENSIONS.
3. CONCEALED CABINET INTERIORS TO BE WHITE MELAMINE. EXPOSED CABINETS INTERIORS TO MATCH CABINET PLAM.
4. ALL DOORS AND DRAWERS SHALL BE EDGE BANDED WITH PLAM TO MATCH FACE.
5. GRAIN DIRECTION OF WOOD-GRAIN PLAM SHALL BE VERTICAL ON ALL DOORS AND DRAWERS.
6. FURNITURE SHOWN FOR INFORMATION AND COORDINATION PURPOSES ONLY. PROVIDE BLOCKING AND POWER AS REQUIRED.
7. SEE FINISH SCHEDULE FOR MORE INFORMATION REGARDING FINISHES. SEE A-600.

**CASEWORK HARDWARE NOTES:**

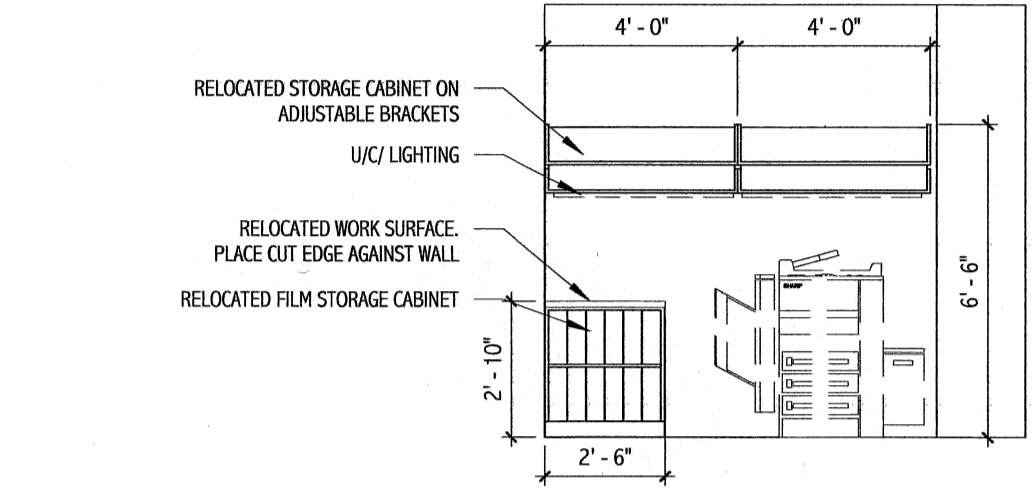
1. PROVIDE PRODUCTS LISTED BELOW OR SUBMIT ALTERNATE PRODUCTS FOR APPROVAL.
2. SURFACE DOOR PULLS TO BE HAFELE #115.60.602 SATIN FINISHED STAINLESS STEEL BOW PULLS.
3. HINGES TO BE BLUM CLIP TOP 120 DEGREE CONCEALED EUROPEAN-STYLE HINGE.
4. FULL-EXTENSION DRAWER SLIDES TO BE KNAPE & VOGT #8400 SERIES WITH WHITE EPOXY FINISH.
5. CLOSET RODS TO BE KNAPE & VOGT #770-5 HEAVY DUTY 1-5/16" O.D. STEEL TUBE W/ CHROME FINISH. FLANGES TO BE KV #764 & 766.
6. ADJUSTABLE SHELF PINS TO BE KV #345 NP.
7. WORKSTATION SUPPORT BRACKETS TO BE RAKKS BRACKET. MODEL NUMBER SHOULD BE DETERMINED BY SHELF SIZE AND SHELF LOAD.



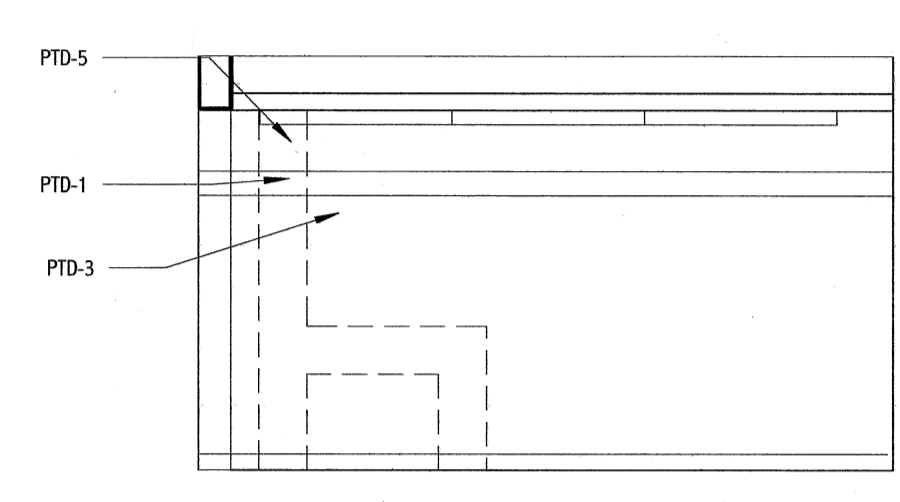
5 FLUORO CONTROL - 5 - A  
1/4" = 1'-0"



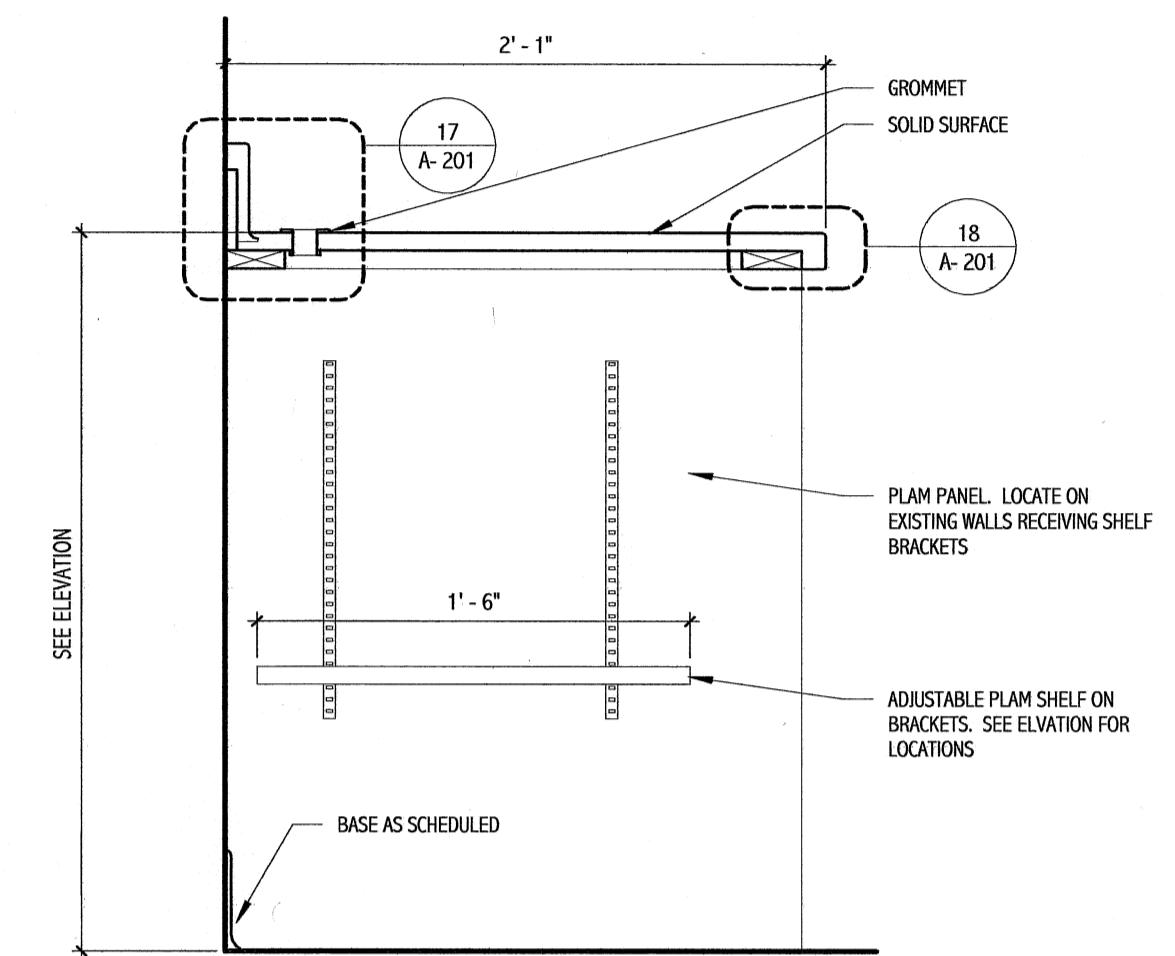
6 FLUORO CONTROL - 5 - B  
1/4" = 1'-0"



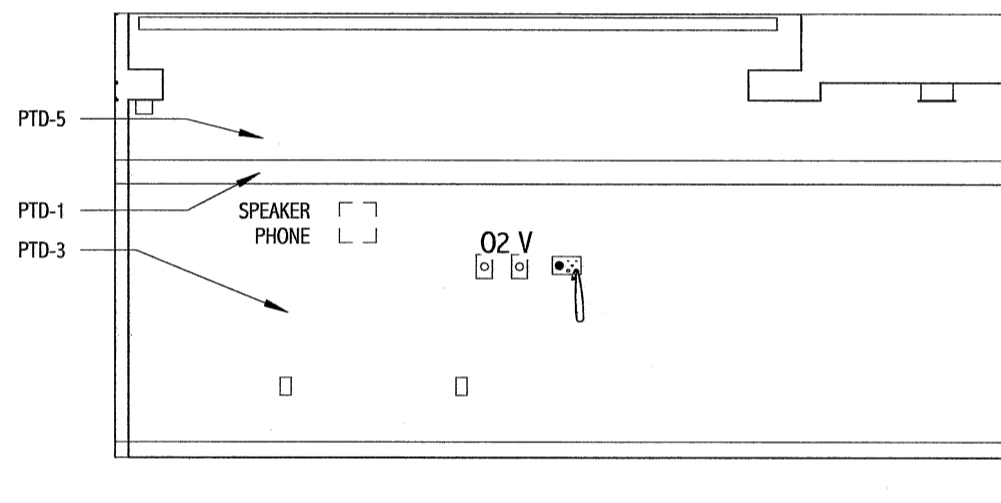
7 FLUORO WOOK ROOM - A  
1/4" = 1'-0"



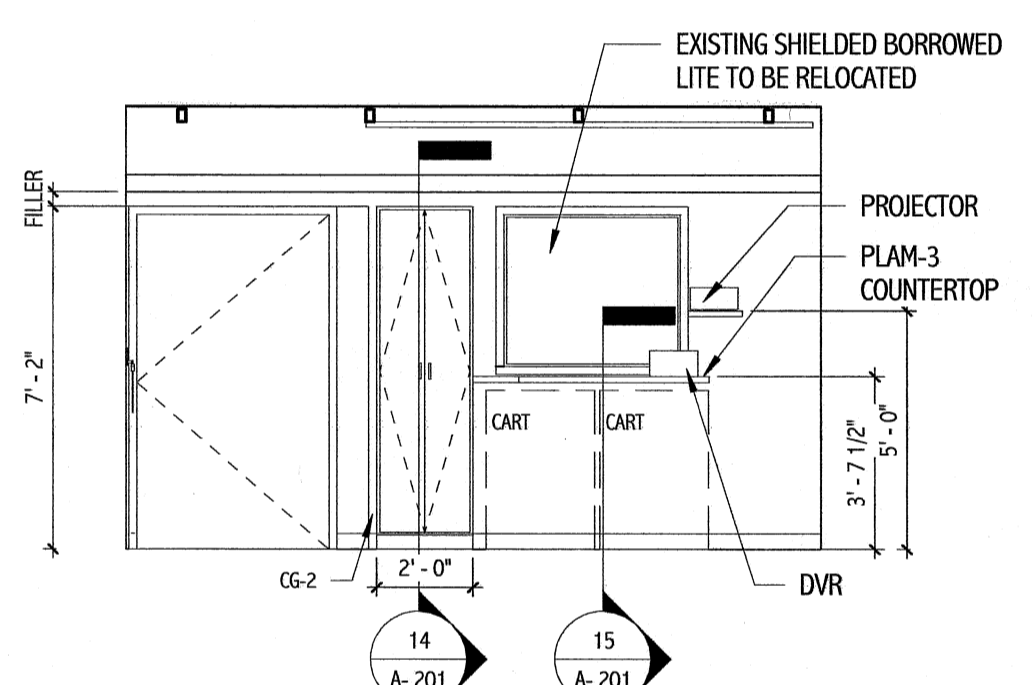
8 FLUORO 6 - A  
1/4" = 1'-0"



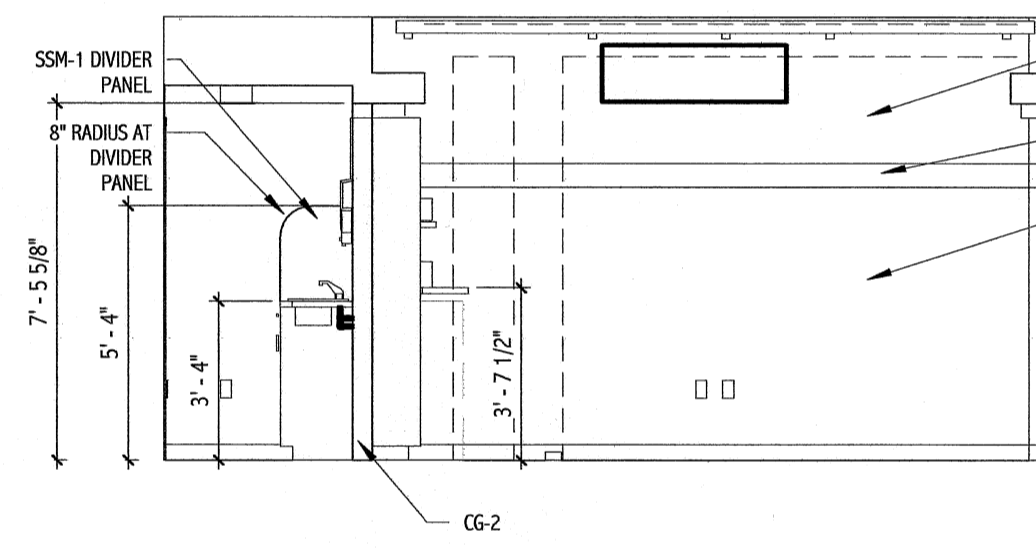
22 CASEWORK DETAIL  
1 1/2" = 1'-0"



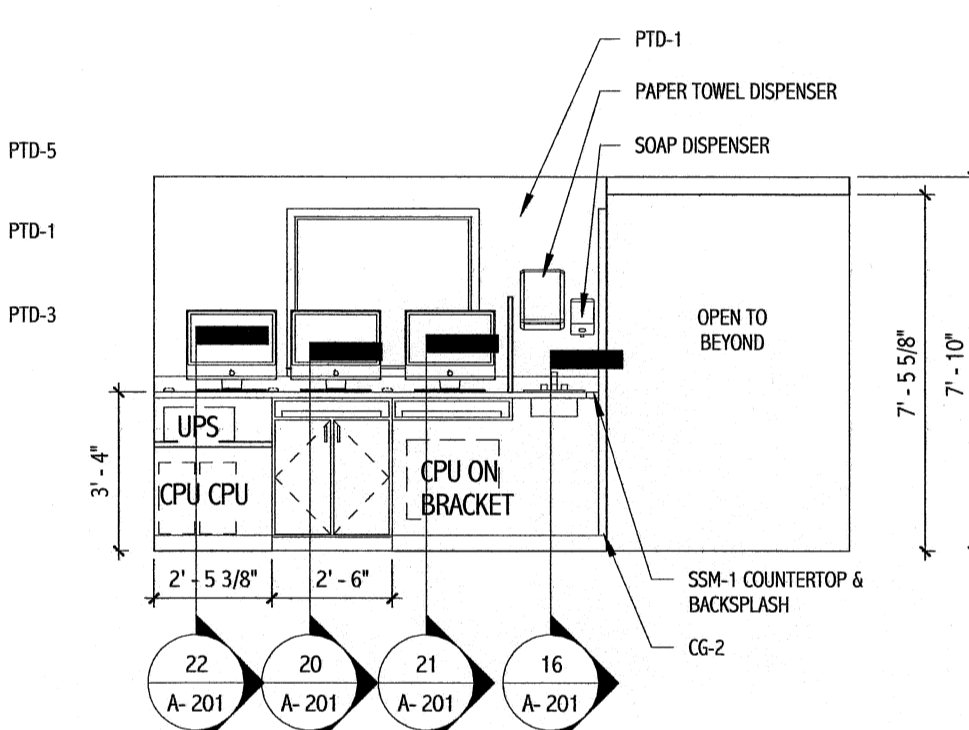
9 FLUORO 6 - B  
1/4" = 1'-0"



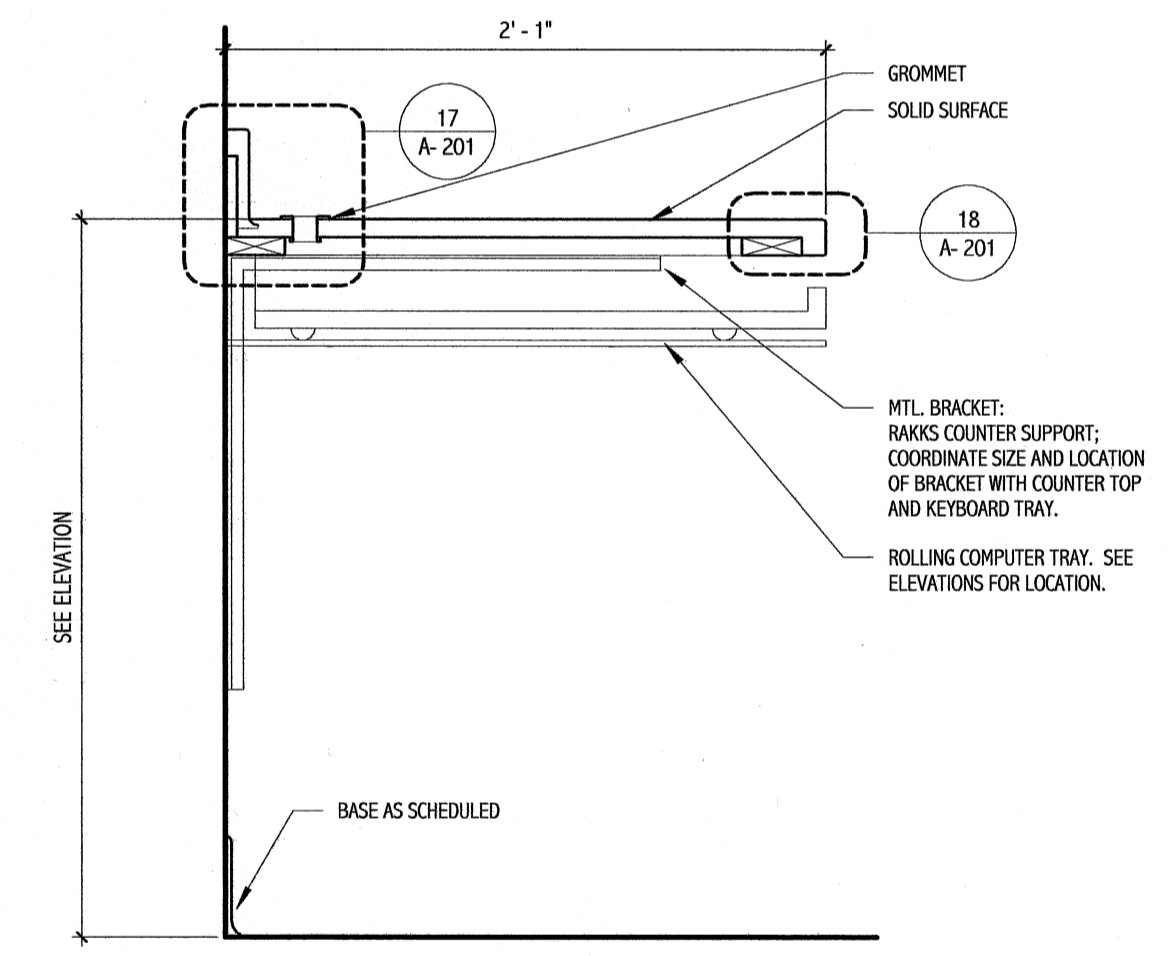
10 FLUORO 6 - C  
1/4" = 1'-0"



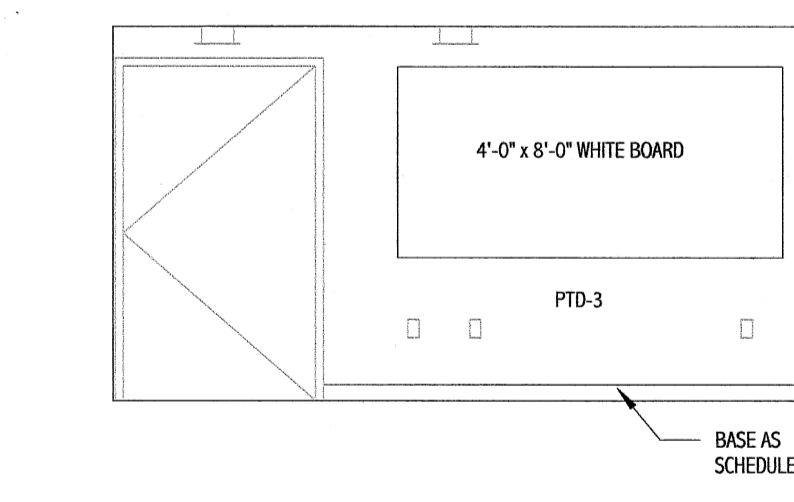
11 FLUORO 6 - D  
1/4" = 1'-0"



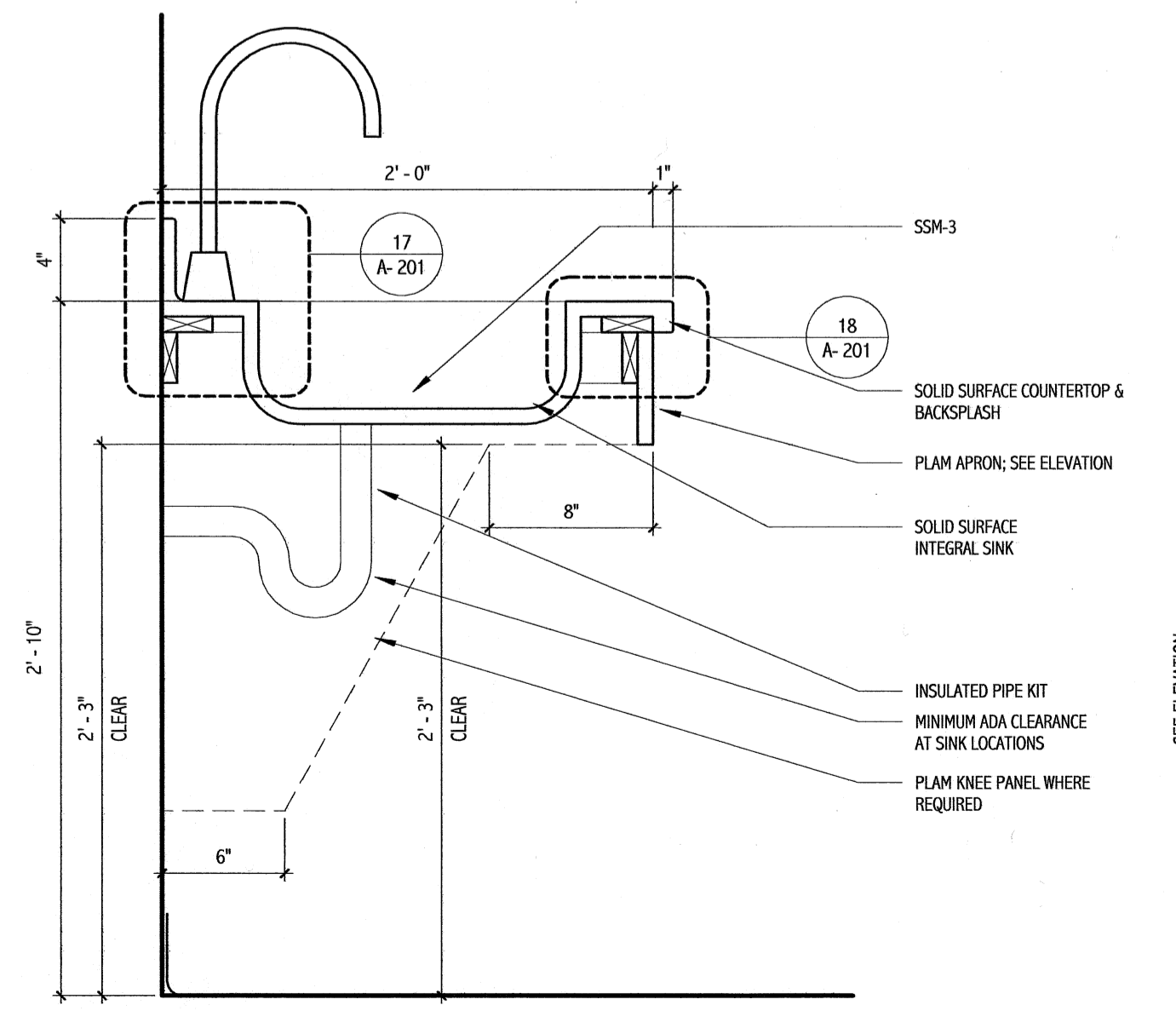
12 FLUORO CONTROL - 6 - A  
1/4" = 1'-0"



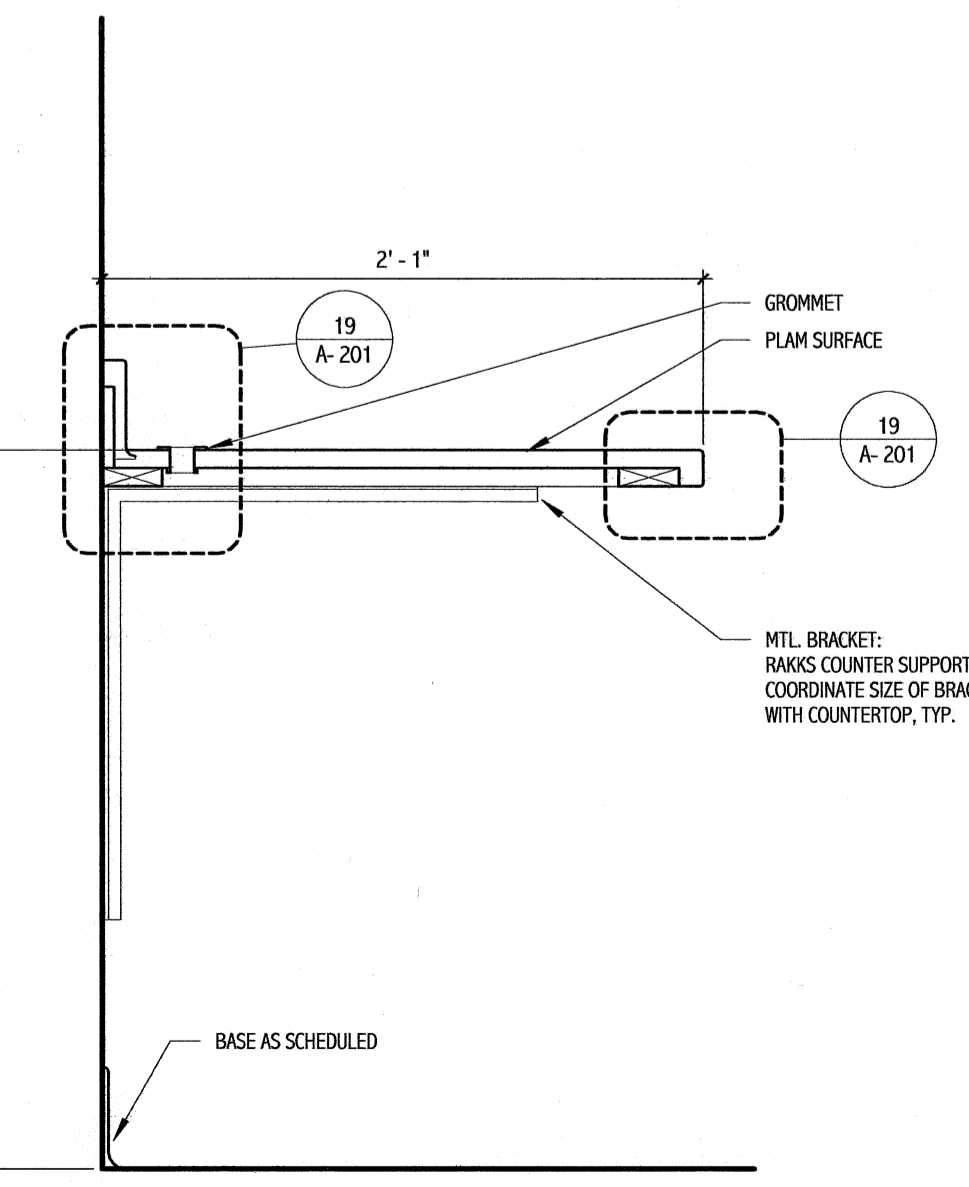
21 CASEWORK DETAIL  
1 1/2" = 1'-0"



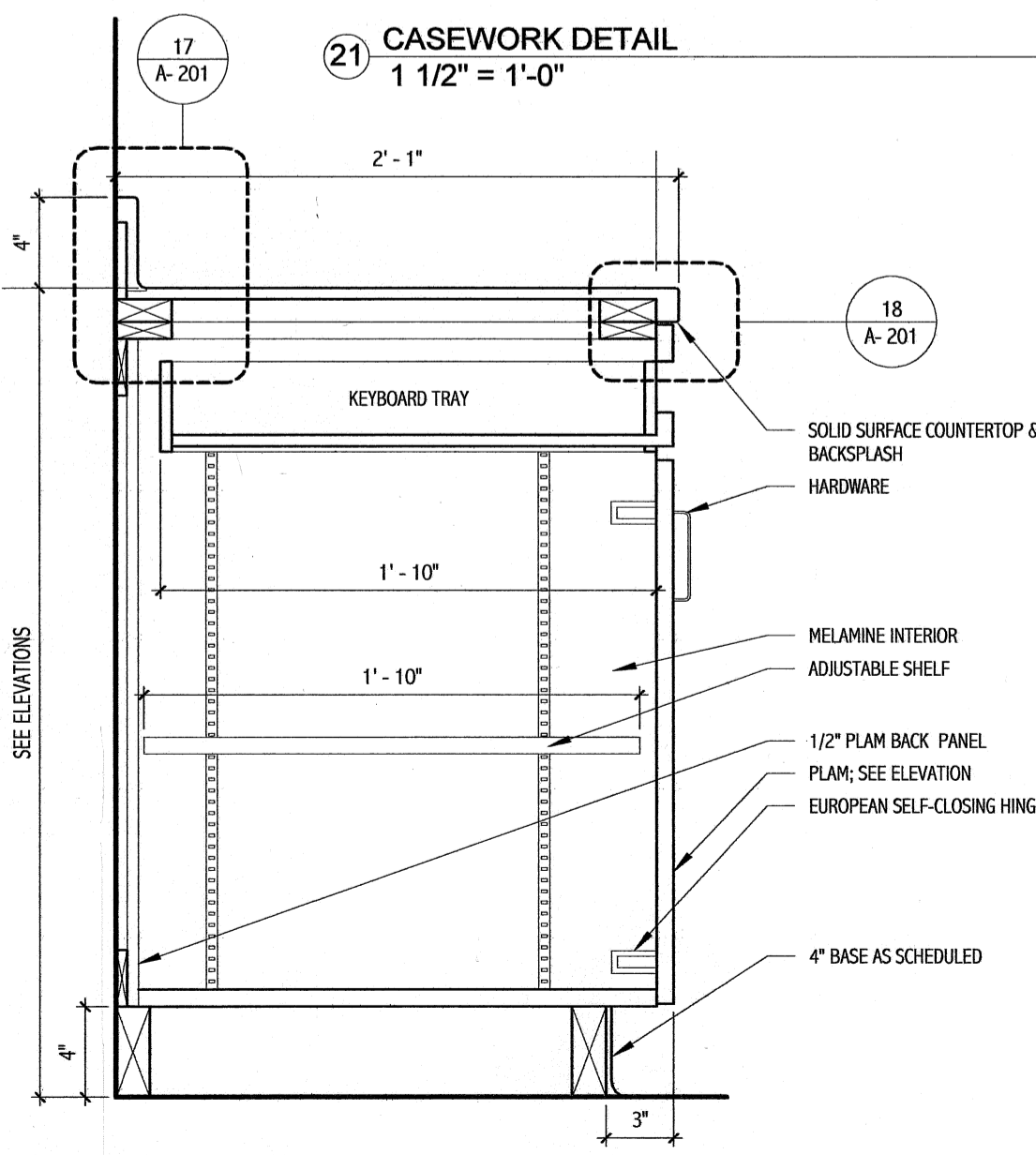
13 FLUORO CONTROL - 6 - B  
1/4" = 1'-0"



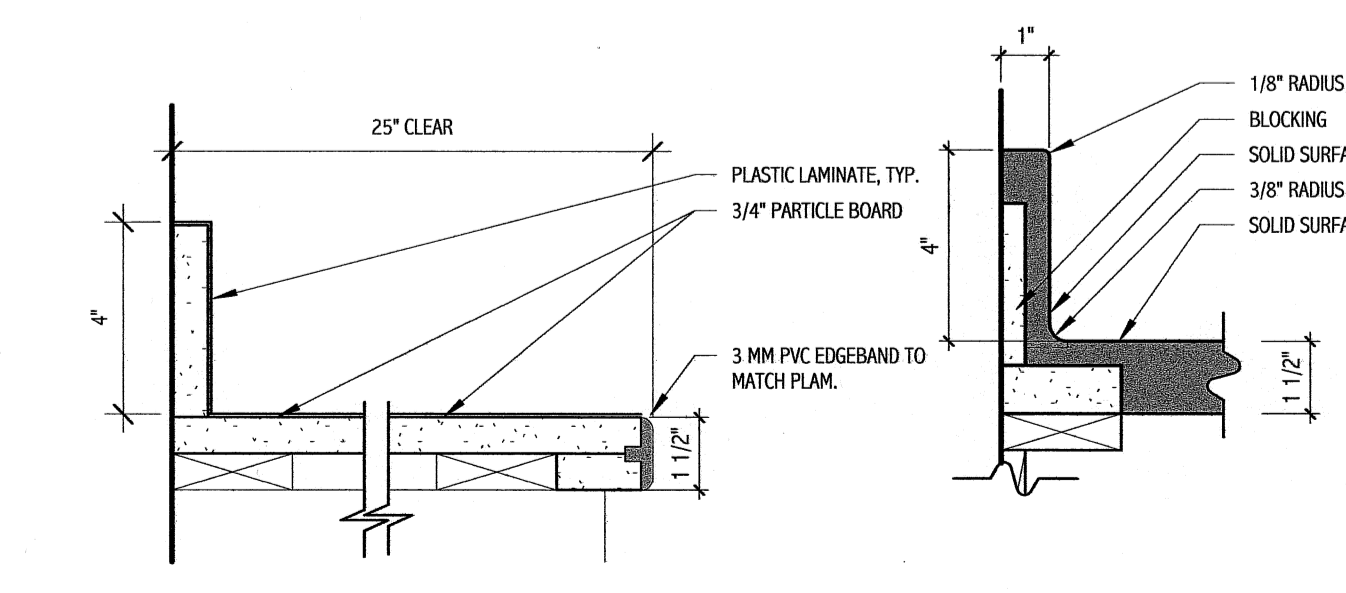
16 CASEWORK DETAIL  
1 1/2" = 1'-0"



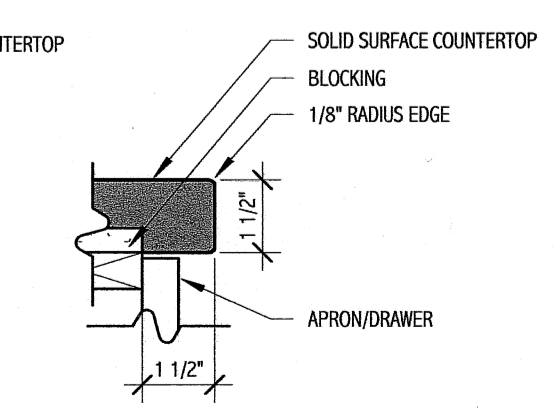
15 CASEWORK DETAIL  
1 1/2" = 1'-0"



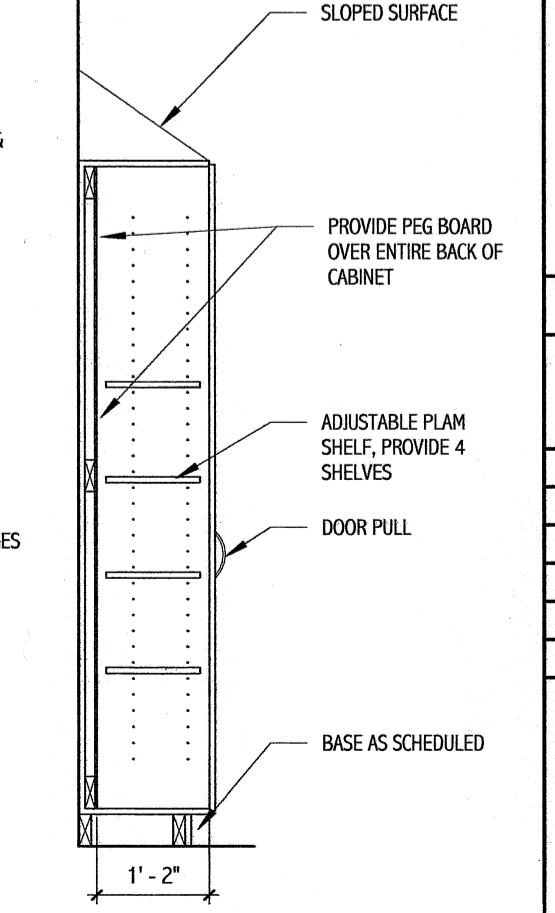
20 CASEWORK DETAIL  
1 1/2" = 1'-0"



17 EDGE DETAIL  
3" = 1'-0"



18 EDGE DETAIL  
3" = 1'-0"



14 PEG BOARD DETAIL  
1/2" = 1'-0"

144 Fox Street, Box 618  
Portland, Maine 04104  
Tel: (207) 772-3846  
Fax: (207) 772-1070  
www.smrtinc.com

ARCHITECTURE  
ENGINEERING  
PLANNING  
INTERIOR DESIGN  
COMMISSIONING

**SMRT**

LICENSED ARCHITECT  
DEREK J. VEILLEUX  
STATE OF MAINE  
8.24.10

PROJECT NORTH

Bramhall Radiology  
FLUORO RENOVATIONS  
PORTLAND, ME

ISSUED FOR CONSTRUCTION 8.24.10

NO.	DATE	DESCRIPTION	ISSUED FOR CONSTRUCTION
0	8.24.10		

GRAPHIC SCALE:  
0" 1"

SCALE: As indicated

PROJECT MANAGER: DMV  
DRAWN BY: ART  
A/E OF RECORD: DMV  
PROJECT NO.: 09022-02  
DATE: 8.24.10

SHEET TITLE: INTERIOR ELEVATIONS

SHEET No. A-201