

**ABBREVIATIONS:**

AB	ANCHOR BOLT	L	ANGLE / LENGTH
AC	AIR CONDITIONING	LF	LEFT
ACCU	AIR CONDITIONING CONDENSER UNIT	LINO	SHEET LINOLEUM
ACPLAS	ACOUSTICAL PLASTER	LL	LIVE LOAD
ACT	ACOUSTIC CEILING TILE	LLH	LONG LEG HORIZONTAL
AF	ADHESIVE FINISH FLOOR	LVV	LONG LEG VERTICAL
AGG	AGGREGATE	LP	LIGHTING PANEL / LIQUIFIED PROPANE
ALT	ALTERNATE	MAX	MAXIMUM
AP	ACCESS PANEL	MB	MARKER BOARD
APPROX	APPROXIMATE	MDO	MEDIUM DENSITY OVERLAY
AROI	ARCHITECTURAL	MECH	MECHANICAL
BCK	BOTTOM CORO EXTENSION	MFR	MANUFACTURER
BD	BOARD	MIN	MINIMUM
BIT	BITUMINOUS	MISC	MISCELLANEOUS
BLDG	BUILDING	MDO	MEDIUM DENSITY OVERLAY
BLP	BORROWED LIGHT PANEL	MR	MASONRY OPENING
BO	BOTTOM OF	MUA	MOISTURE-RESISTANT MAKE-UP AIR
BOF	BOTTOM OF FOOTING	N	NOHING
BOS	BOTTOM OF STEEL	NCB	NEW CATCH BASIN
BOT	BOTTOM	NDBM	NEW DRAIN MAINHOLE
BRDG	BRIDGING	NEM	NEW FIRE MAIN
BRG	BRACING	NC	NOT IN CONTRACT
BS	BOTH SIDES	NS	NEAR SIDE
BSE	BRICK SHELF ELEVATION	NSD	NEW STORM DRAIN LINE
		NSS	NEW SANITARY SEWER LINE
C	CHANNEL	NTS	NOT TO SCALE
CB	CATCH BASIN / CHALKBOARD	NW	NEW WATER LINE
CBM	CONTINUOUS BACKER BOARD	OC	ON CENTER
CFM	CUBK FEET PER MINUTE	OF	OUTSIDE FACE
CP	CAST IN PLACE	OH	OVERHEAD
CI	CONTROL JOINT / CONSTRUCTION JOINT	PA	PUBLIC ADDRESS
CL	CENTER LINE	PAF	POWER-ACTUATED FASTENER
CLL	CONTRACT LIMIT LINE	POU	POOL DEHUMIDIFICATION UNIT
CLR	CLEAR	PL	PLATE / PROPERTY LINE
CMU	CONCRETE MASONRY UNIT	PLM	PLASTIC LAMINATE
COL	COLUMN	PLF	POUNDS PER LINEAR FOOT
CONC	CONCRETE	PP	POUNDS PER SQUARE FOOT
CONT	CONTINUOUS	PSI	POUNDS PER SQUARE INCH
CT	CERAMIC TILE	PT	PRESSURE-TREATED
CUH	CABINET UNIT HEATER	PVC	POLYVINYL CHLORIDE
		PWMT	PW/MENT
D	DIAMETER	R	RISER / RADUS
DBL	DOUBLE	RB	RESIDENT BASE
DF	DRAWING FOUNTAIN	RD	ROOF DRAIN
DL	DEAD LOAD	REIN	REINFORCED
DR	DISPLAY RAIL	RFQ	REQUIRED
DTL	DETAIL	RI	RIGHT
DW	DISBURSER DRAWING	RO	ROUGH OPENING
DWG	DRAWING	ROW	RIGHT OF WAY
		RR	RUB RAIL
EA	EACH	RTU	ROOF TOP UNIT (HVAC)
EF	EXHAUST FAN / EACH FACE	SACT	SUSPENDED ACOUSTIC TILE CEILING
EI	EXPANSION JOINT	SC	SOLID CORE
EL	ELEVATION	SF	SQUARE FOOT / SUPPLY FAN
ELEC	ELECTRICAL	SFRM	SPRINKLED FIRE-RESISTIVE MATERIAL
EOP	EDGE OF PAVEMENT	SHT	SHEET
EPDM	ETHYLENE PROPYLENE DIENE MONOMER	SIM	SIMILAR
EQ	SQUARE	SK	SHEAR KEY
EW	EACH WAY	SN	SANITARY NAPKIN (DISPENSER)
EW	ELECTRIC WATER COOLER	SP	SPECIAL
EXST	EXISTING	SS	STAINLESS STEEL
EXP	EXPANSION	STN	STATION
EXT	EXTERIOR	STL	STEEL
		STRUC	STRUCTURAL
FB	FLAT BAR	T	TREAD
FBO	FURNISHED BY OTHERS	T&B	TACKBOARD
FCD	FLOOR CLEAN-OUT	T&B	TOP AND BOTTOM
FD	FLOOR DRAIN	TBM	TEMPORARY BENCHMARK
FE	FIRE EXTINGUISHER	TCE	TOP CHORD EXTENSION
FEC	FIRE EXTINGUISHER CABINET	TE	TOP OF
FF	FINISH FLOOR / FIRM FACE	TO	TOP OF
FFE	FINISH FLOOR ELEVATION	TOC	TOP OF CONCRETE
FO	FRAMED OPENING	TOF	TOP OF FOOTING
FRP	FIBER REINFORCED PLASTIC	TOM	TOP OF MASONRY
FS	FIRE SIDE	TOP	TOP OF
FTG	FOOTING	TOS	TOP OF STEEL
		TOW	TOP OF WALL
GA	GAUGE	TP	TOILET PAPER (DISPENSER) / TEST PIT
GALV	GALVANIZED	TS	TUBE STEEL
GB	GRAB BAR	TYP	TYPICAL
GC	GENERAL CONTRACTOR	UH	UNIT HEATER
GOT	GYPSON BOARD-IN-TILE	UNO	UNLESS NOTED OTHERWISE
GV	GRAVITY VENT	V	VENT PIPE / VERTICAL
GWB	GYPSON WALL BOARD	VB	VAPOR BARRIER
		VCT	VINYL COMPOSITION TILE
H	HORIZONTAL	VERT	VERTICAL
HC	HANDICAPPED / HOLLOW CORE	VP	VISION PANEL
HORIZ	HORIZONTAL	VTR	VENT THROUGH THE ROOF
HM	HOLLOW METAL	W	WITH
HRU	HEAT RECOVERY UNIT	WC	WATER CLOSET
HV	HEATING AND VENTILATING	WF	WIRE FLANGE
HVAC	HEATING, VENTILATING AND AIR CONDITIONING	WH	WATER HEATER
		WID	WITH OUT
I	INCLUDED ANGLE	WP	WORKING POINT
ID	INSIDE DIAMETER	WS	WEB STRENER
IF	INSIDE FACE	WVF	WELED WIRE FABRIC
II	ISOLATION JOINT		
IMP	IMPACT RESISTANT		
INS	INSULATED		
INV	INVERT		
IS	JOINT SUBSTITUTE		
K	KIPS		

**SYMBOL LEGEND:**

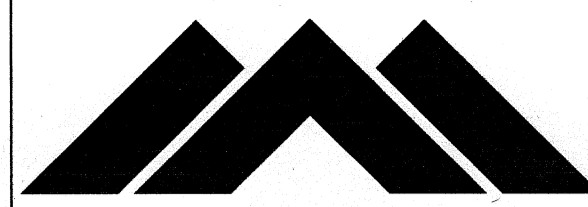
	BUILDING SECTION
	WALL SECTION
	DETAIL
	EXTERIOR ELEVATION
	INTERIOR ELEVATION
	LEVEL LINE
	KEY NOTE
	EQUIPMENT ACCESSORY TAG
	WINDOW TAG
	PARTITION TAG
	DOOR TAG
	ROOM NAME ROOM NUMBER
	COLUMN BUBBLE & CENTERLINE
	BACKER ROD & SEALANT
	View Name 1/8" = 1'-0"

**GENERAL NOTES:**

- FIELD VERIFY ALL DIMENSIONS AND LAYOUT PRIOR TO PROCEEDING WITH WORK. NOTIFY ARCHITECT IN WRITING OF ANY DISCREPANCIES OR INCONSISTENCIES. FAILURE TO REPORT ANY DISCREPANCIES WITHIN THESE CONSTRUCTION DOCUMENTS TO THE ARCHITECT WILL NOT BE GROUNDS FOR ADDITIONAL COST OR CHANGE ORDERS.
- THE CONTRACTOR SHALL BE RESPONSIBLE FOR PROVIDING ALL MATERIALS (UNLESS NOTED OTHERWISE), AND WORKMANSHIP IN ACCORDANCE WITH FEDERAL, STATE, CITY, AND LOCAL BUILDING CODES AND THEIR REQUIREMENTS.
- CONTRACTOR TO CONFIRM EXISTING WALL RATINGS.
- THE CONTRACTOR AND ALL TRADES SHALL NOTE REQUIREMENTS OF "GENERAL NOTES" ON ALL SHEETS.
- EACH TRADE TO PROVIDE SMOKE OR FIRE SEALANT AT PENETRATIONS AS REQUIRED FOR WALL TYPE. ALL SEALANT, FIRE STOPPING, AND SMOKE STOPPING ASSEMBLIES SHALL BE U.L. RATED.
- DIMENSIONS ARE FACE OF CONCRETE, FACE OF MASONRY, FACE OF EXISTING PARTITION AND CENTERLINE OF STUD PARTITIONS, UNLESS INDICATED OTHERWISE.
- REFER TO ALL CONSTRUCTION DOCUMENTS FOR REQUIREMENTS WHICH MAY AFFECT THE WORK IN ANOTHER DISCIPLINE AND COORDINATE WORK.
- REFER TO DETAILS FOR ADDITIONAL DIMENSIONAL INFORMATION.
- DOOR JAMBS SHALL BE LOCATED 6" FROM CORNER IN STUD PARTITIONS AND 8" FROM CORNER IN MASONRY PARTITIONS UNLESS INDICATED OTHERWISE.
- PROVIDE BLOCKING IN WALLS AS NECESSARY WHERE CASEWORK, SHELVES, HANDRAILS, AND MISC. EQUIPMENT ARE LOCATED.
- PATCH ALL HOLES, WALLS AND CRACKS IN ROOMS TO RECEIVE NEW PAINT.
- ANY EXISTING WALLS THAT ARE FOUND TO BE UNBRACED OR DO NOT EXTEND TO BOTTOM OF DECK/SLAB SHOULD BE BRACED BACK TO STRUCTURE. WHEN PRIVACY IS AN ISSUE EXTEND WALL TO BOTTOM OF DECK/SLAB.
- DO NOT SCALE DRAWINGS.
- "PROVIDE" MEANS "FURNISH AND INSTALL."

**APPLICABLE CODES:**

- GENERAL:**
- INTERNATIONAL BUILDING CODE (IBC); 2009 EDITION
  - NATIONAL FIRE PROTECTION ASSOCIATION (NFPA101); 2010 EDITION
  - ACCESSIBILITY GUIDELINES FOR BUILDINGS AND FACILITIES (ADA); 1994 EDITION
  - AIA GUIDELINES FOR DESIGN AND CONSTRUCTION OF HOSPITAL AND HEALTHCARE FACILITIES; 2010 EDITION
- PLUMBING:**
- NFPA 13: INSTALLATION OF SPRINKLER SYSTEMS; 2002
  - STATE OF MAINE INTERNAL PLUMBING CODE; 2005
- HVAC:**
- MECHANICAL CODE: INTERNATIONAL MECHANICAL CODE; 2003 EDITION
  - NFPA 99 HEALTHCARE FACILITIES; 2002 EDITION
  - ENERGY CODE: ASHRAE 90.1; 2001 EDITION WITH AMENDMENTS
  - ASHRAE 62; 2001 EDITION
  - FIRE AND SMOKE DAMPER INSTALLATION: NFPA 90A AND NFPA 10; 2003 EDITION
  - DUCT MOUNTED SMOKE DETECTORS: NFPA 72 EDITION
- ELECTRICAL:**
- NFPA 70; 2005 EDITION
  - NFPA 72; 2003 EDITION
  - IESNA LIGHTING HANDBOOK REFERENCE AND APPLICATION, 9th EDITION



**MAINE MEDICAL CENTER**

BRAMHALL CAMPUS: PORTLAND, MAINE  
**FLURO RENOVATIONS**

ARCHITECTURAL	Sheet Number	Sheet Name	Issue Status	Issue Date
G-001		GENERAL INFORMATION	IFC	8.24.10
A-001		BASEMENT LIFE SAFETY PLAN, PHASING PLAN & DEMOLITION PLANS	IFC	8.24.10
A-101		BASEMENT FLOOR PLAN	IFC	8.24.10
A-102		BASEMENT REFLECTED CEILING PLAN	IFC	8.24.10
A-201		INTERIOR ELEVATIONS	IFC	8.24.10
A-600		INTERIOR FINISHES, SCHEDULES & DETAILS	IFC	8.24.10

MECHANICAL	Sheet Number	Sheet Name	Issue Status	Issue Date
M-001		MECHANICAL LEGEND AND ABBREVIATIONS	IFC	8.24.10
MD101		FLURO DEMOLITION PLAN	IFC	8.24.10
MH101		FLURO MECHANICAL DUCTWORK PLAN	IFC	8.24.10
MP101		FLURO MECHANICAL PIPING PLAN	IFC	8.24.10
MP102		FLURO MECHANICAL PIPING PLAN ROOF	IFC	8.24.10
M-601		MECHANICAL SCHEDULES	IFC	8.24.10

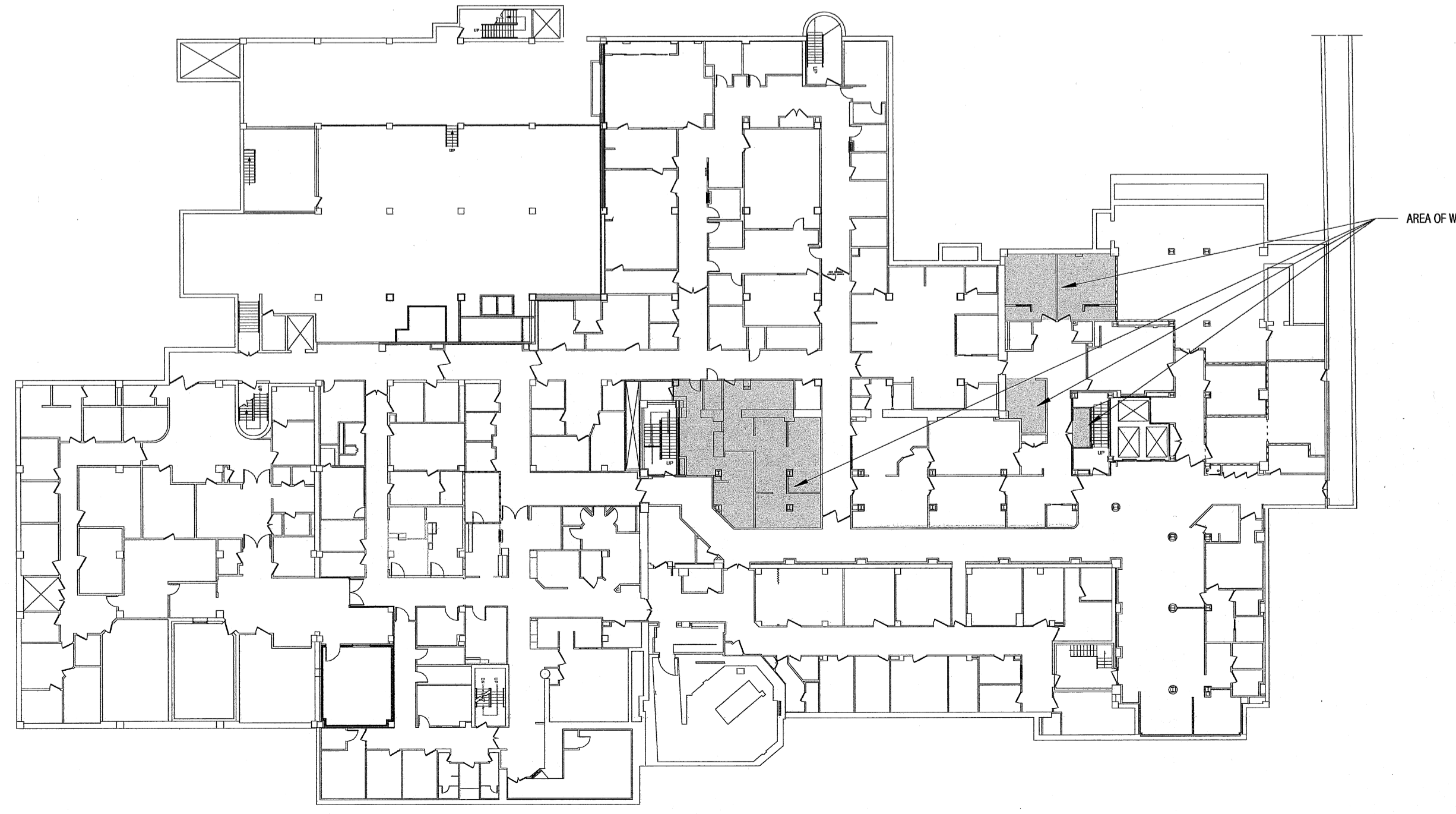
PLUMBING	Sheet Number	Sheet Name	Issue Status	Issue Date
PL001		PLUMBING LEGEND AND ABBREVIATIONS	IFC	8.24.10
PL101		FLURO PLUMBING PLANS	IFC	8.24.10
PL501		PLUMBING DETAILS	IFC	8.24.10
PL601		PLUMBING SCHEDULES	IFC	8.24.10

ELECTRICAL	Sheet Number	Sheet Name	Issue Status	Issue Date
E-001		FLURO LEGEND AND GENERAL NOTES	IFC	8.24.10
E-002		FLURO SPECIFICATIONS SHEET 1	IFC	8.24.10
E-003		FLURO SPECIFICATIONS SHEET 2	IFC	8.24.10
ED101		FLURO DEMOLITION BASEMENT PLAN	IFC	8.24.10
EP101		FLURO POWER PLAN	IFC	8.24.10
EP401		ENLARGED POWER PLAN SHEET 1	IFC	8.24.10
EP402		ENLARGED POWER PLAN SHEET 2	IFC	8.24.10
EL101		FLURO BASEMENT LIGHTING PLAN	IFC	8.24.10
EY101		FLURO BASEMENT SYSTEMS PLAN	IFC	8.24.10
EP601		ONE - LINE DIAGRAM AND PANEL SCHEDULES	IFC	8.24.10

EQUIPMENT	Sheet Number	Sheet Name	Issue Status	Issue Date
Q-001		VENDOR EQUIPMENT DRAWINGS SHEET 1	IFC	8.24.10
Q-002		VENDOR EQUIPMENT DRAWINGS SHEET 2	IFC	8.24.10
Q-003		VENDOR EQUIPMENT DRAWINGS SHEET 3	IFC	8.24.10
Q-004		VENDOR EQUIPMENT DRAWINGS SHEET 4	IFC	8.24.10
Q-005		VENDOR EQUIPMENT DRAWINGS SHEET 5	IFC	8.24.10
Q-006		VENDOR EQUIPMENT DRAWINGS SHEET 6	IFC	8.24.10
Q-007		VENDOR EQUIPMENT DRAWINGS SHEET 7	IFC	8.24.10
Q-008		VENDOR EQUIPMENT DRAWINGS SHEET 8	IFC	8.24.10
Q-009		VENDOR EQUIPMENT DRAWINGS SHEET 9	IFC	8.24.10
Q-010		VENDOR EQUIPMENT DRAWINGS SHEET 10	IFC	8.24.10
Q-011		VENDOR EQUIPMENT DRAWINGS SHEET 11	IFC	8.24.10
Q-012		VENDOR EQUIPMENT DRAWINGS SHEET 12	IFC	8.24.10

**PARTITION LEGEND:**

	FURRING PARTITION -7/8" METAL HAT SECTION 24" O.C. TO DECK -(1) LAYER 5/8" GWB, TO DECK	
	FURRING PARTITION -3 5/8" 25 GA. STEEL STUDS @ 24" O.C. TO DECK -(1) LAYER 5/8" INTERIOR GYPSON BOARD TO DECK, TAGGED SIDE	
	FURRING PARTITION -(1) LAYER 5/8" MOISTURE RESISTANT GWB -2 1/2" METAL STUDS	
	1 HOUR RATED PARTITION; U.L. #U415 -(1) LAYER 5/8" TYPE X INTERIOR GYPSON BOARD TO DECK -3 5/8" 25 GA. STEEL STUDS @ 24" O.C. TO DECK; U.L.O. -FULL BATT INSULATION -(1) LAYER 5/8" TYPE X INTERIOR GYPSON BOARD TO DECK -SEAL ALL PENETRATIONS	
	EXISTING WALL CONSTRUCTION TO BE VERIFIED BY CONTRACTOR. MODIFY WALL CONSTRUCTION TO MEET U.L. #U415 WALL CONSTRUCTION	
	SOUND ATTENUATED PARTITION; STC 45 -(1) LAYER 5/8" INTERIOR GYPSON BOARD TO DECK -3 5/8" 25 GA. STEEL STUDS @ 24" O.C. TO DECK; U.L.O. -FULL BATT INSULATION -(1) LAYER 5/8" INTERIOR GYPSON BOARD TO DECK -SEAL ALL PENETRATIONS	
	SOUND ATTENUATED PARTITION; STC 45 -(1) LAYER 5/8" INTERIOR GYPSON BOARD TO CEILING -3 5/8" 25 GA. STEEL STUDS @ 24" O.C. TO CEILING -FULL BATT INSULATION -(1) LAYER 5/8" INTERIOR GYPSON BOARD TO CEILING	
	MATCH EXISTING ADJACENT WALL CONSTRUCTION AND LEAD SHIELDING	



**BASEMENT LEVEL: BRAMHALL CAMPUS**  
1/32" = 1'-0"

144 Fox Street, Box 118  
Portland, Maine 04104  
Tel: (207) 772-3846  
Fax: (207) 772-1070  
www.smrti.com

ARCHITECTURE  
ENGINEERING  
PLUMBING  
INTERIOR DESIGN  
COMMISSIONING

**SMRTI**

DEREK J. VEILLEUX  
REGISTERED ARCHITECT  
STATE OF MAINE  
8.24.10

PROJECT NORTH

FLURO RENOVATIONS  
ISSUED FOR CONSTRUCTION  
8.24.10

BRAMHALL RADIOLOGY  
PORTLAND, ME

CURRENT ISSUE STATUS:

NO.	DATE	DESCRIPTION
0		
1	8.24.10	ISSUED FOR CONSTRUCTION

GRAPHIC SCALE:  
0" 1"

SCALE: As Indicated

PROJECT MANAGER: DIV  
DRAWN BY: ART  
DATE OF RECORD: DIV  
PROJECT NO: 09022-02  
DATE: 8.24.10

SHEET TITLE:  
**GENERAL INFORMATION**

SHEET No: **G-001**