

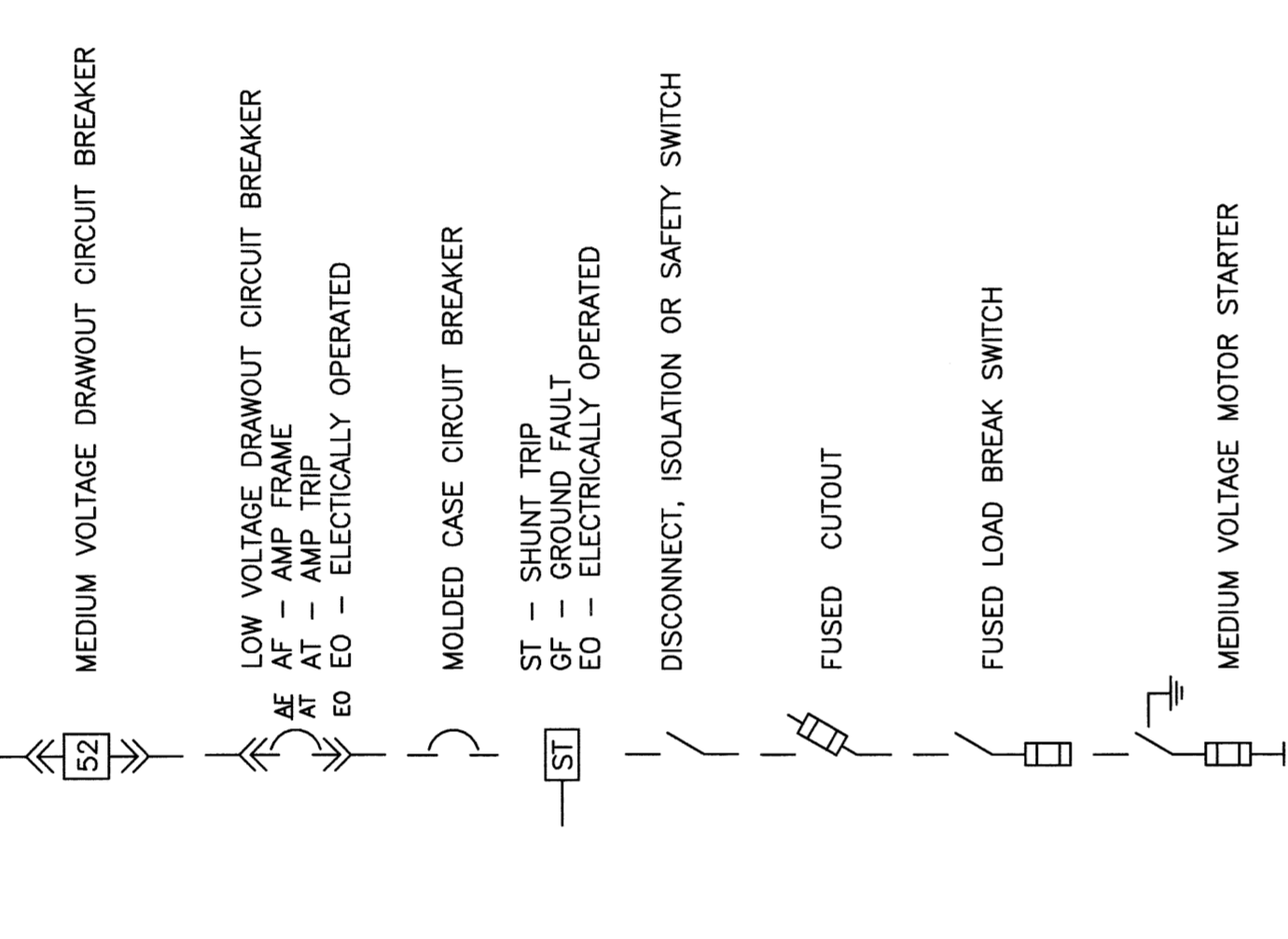
GENERAL NOTES:

- 1. ALL WORK SHALL BE PERFORMED IN ACCORDANCE WITH NFPA-70, NATIONAL ELECTRICAL CODE (NEC).
2. ALL MOTOR SAFETY SWITCHES, DISCONNECTS AND MOTOR SAFETY DEVICES SHALL BE INSTALLED BY AN ELECTRICIAN UNLESS NOTED AS TRANSFERRED WITH EQUIPMENT (T/E).
3. UNLESS OTHERWISE NOTED, CONDUIT RECEPTACLES SHALL BE 18-INCHES AFF. DATA SYSTEM OUTLETS SHALL BE 48-INCHES AFF. FIRE ALARM NOTIFICATION DEVICES SHALL BE 48-INCHES AFF. FIRE ALARM MANUAL PULL STATIONS SHALL BE 48-INCHES TO TOP OF DEVICE.
4. ALL PENETRATIONS THROUGH FLOORS, RATED WALLS AND PARTITIONS SHALL BE SEALED WITH UL APPROVED FIRE RESISTANT MATERIAL TO MAINTAIN THE RATING OF SEPARATION.
5. ALL ENCLOSURES, CONDUIT BODIES AND THEIR COVERS SHALL BE PAINTED TO MATCH THE FINISH OF THE SURFACE TO WHICH THEY ARE ATTACHED.
6. ALL EQUIPMENT BRACKETS, CONDUITORS SHALL BE INSTALLED WITH EVERY FEEDER AND BRANCH CIRCUIT.
7. UNLESS OTHERWISE NOTED, WIRING SHALL BE #12 AWG COPPER WITH 90°C INSULATION.
8. FLEXIBLE METAL CONDUIT, UNLESS OTHERWISE NOTED, SHALL BE LISTED AND APPROVED FOR USE BY THE ARCHITECT.
9. LIGHTING TOGGLE SWITCHES SHALL BE LIQUID TIGHT TYPE.
10. CONDUIT RECEPTACLES SHALL BE HEAVY DUTY GRADE UNLESS NOTED OTHERWISE.
11. PROVIDE WALL PLATES FOR ALL WIRING DEVICES.
12. ALL WIRING SHALL BE 600V, COPPER WITH THHN/THWN INSULATION.

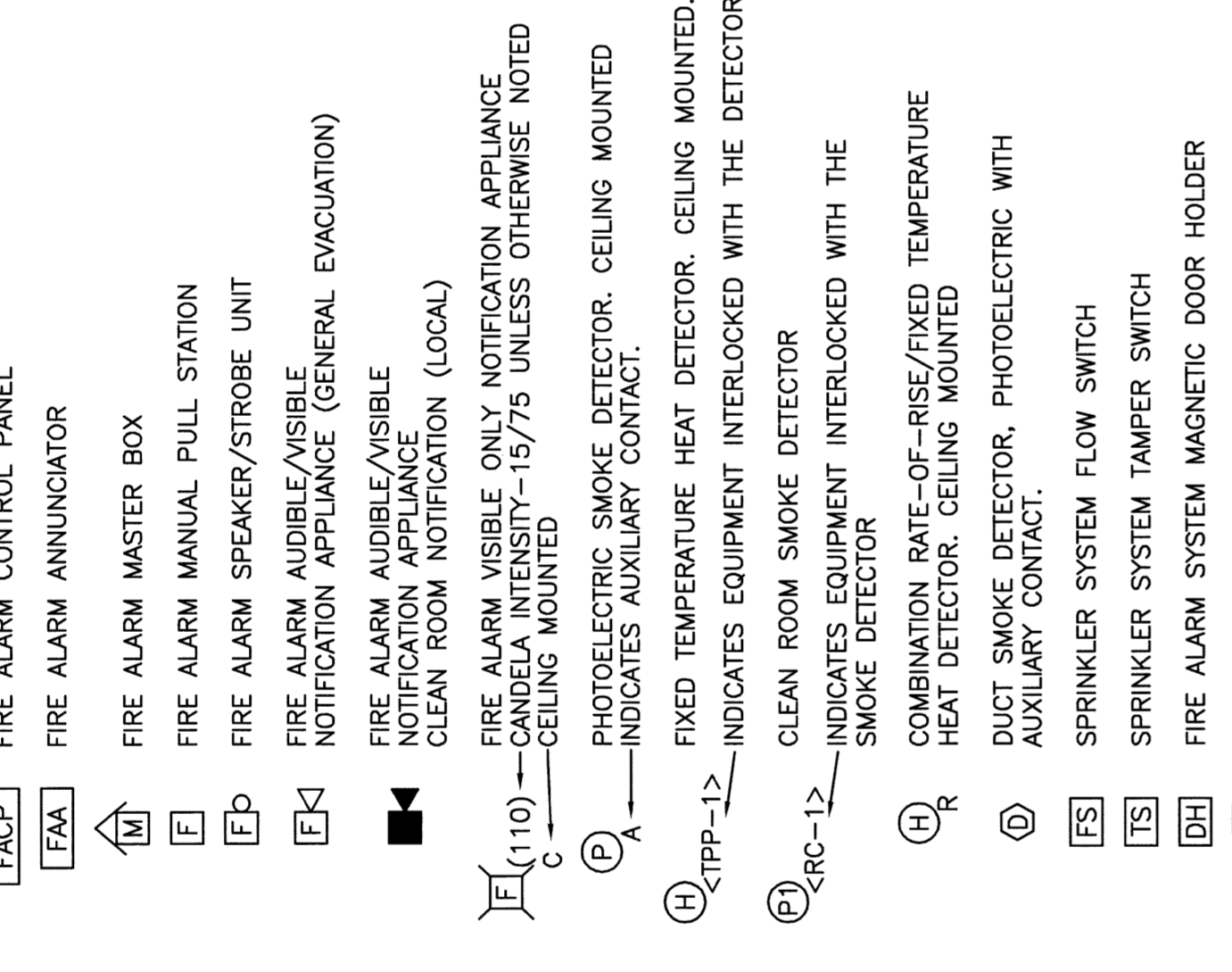
ABBREVIATIONS

Table with 2 columns: Abbreviation and Description. Includes terms like AMF, AMR, AMU, AMV, AMW, AMX, AMY, AMZ, AM1, AM2, AM3, AM4, AM5, AM6, AM7, AM8, AM9, AM10, AM11, AM12, AM13, AM14, AM15, AM16, AM17, AM18, AM19, AM20, AM21, AM22, AM23, AM24, AM25, AM26, AM27, AM28, AM29, AM30, AM31, AM32, AM33, AM34, AM35, AM36, AM37, AM38, AM39, AM40, AM41, AM42, AM43, AM44, AM45, AM46, AM47, AM48, AM49, AM50, AM51, AM52, AM53, AM54, AM55, AM56, AM57, AM58, AM59, AM60, AM61, AM62, AM63, AM64, AM65, AM66, AM67, AM68, AM69, AM70, AM71, AM72, AM73, AM74, AM75, AM76, AM77, AM78, AM79, AM80, AM81, AM82, AM83, AM84, AM85, AM86, AM87, AM88, AM89, AM90, AM91, AM92, AM93, AM94, AM95, AM96, AM97, AM98, AM99, AM100.

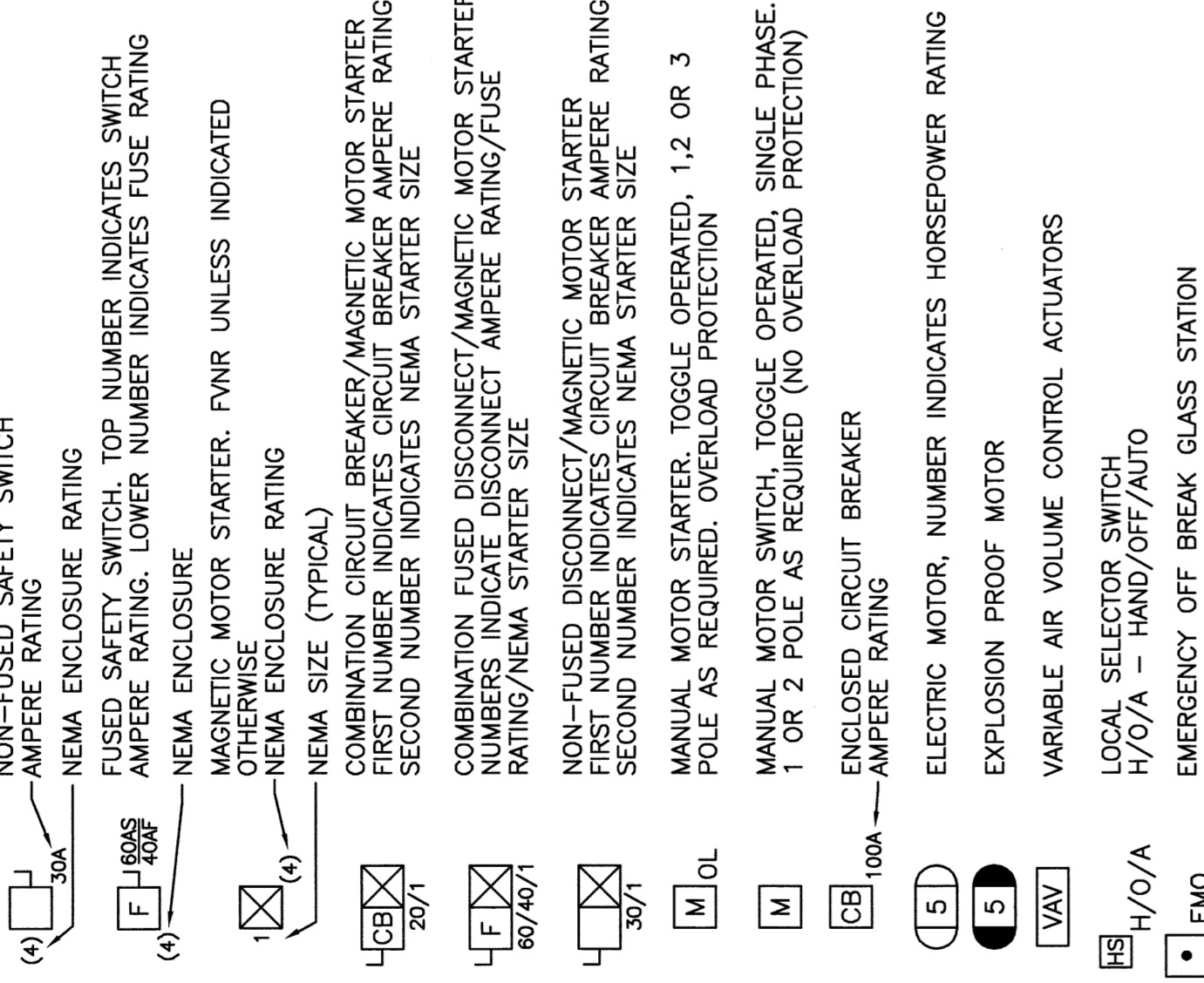
ONE LINE DIAGRAM



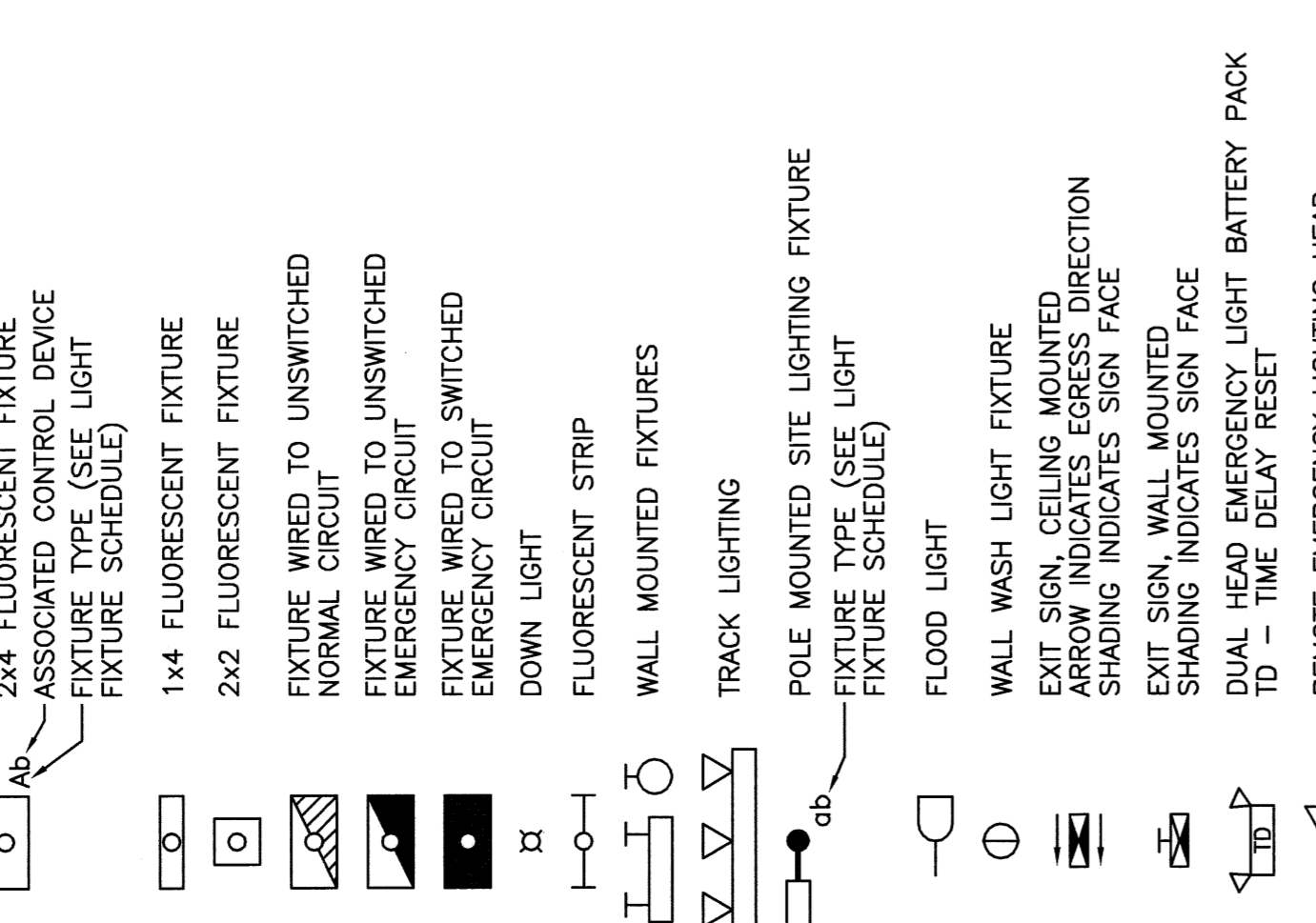
FIRE ALARM



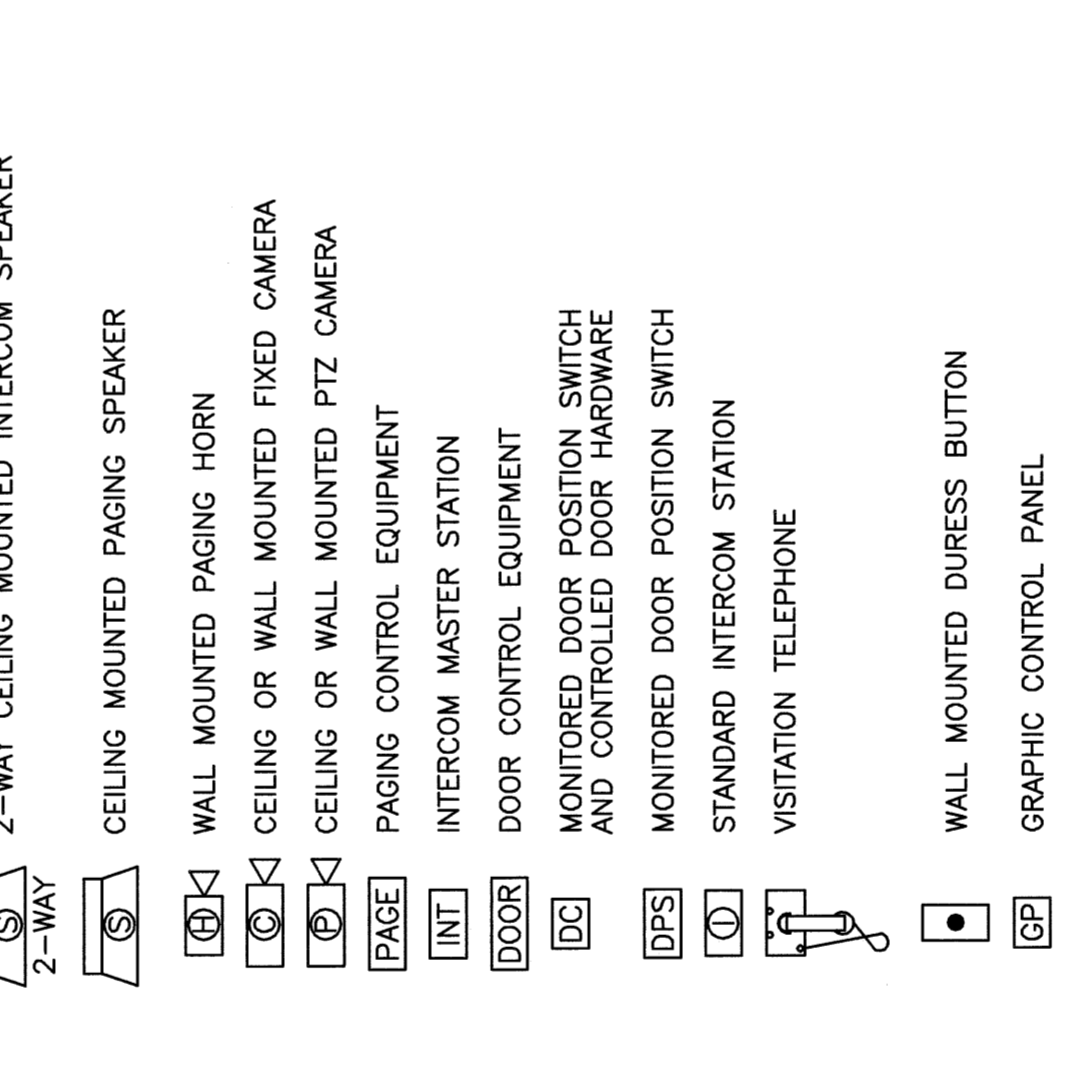
POWER



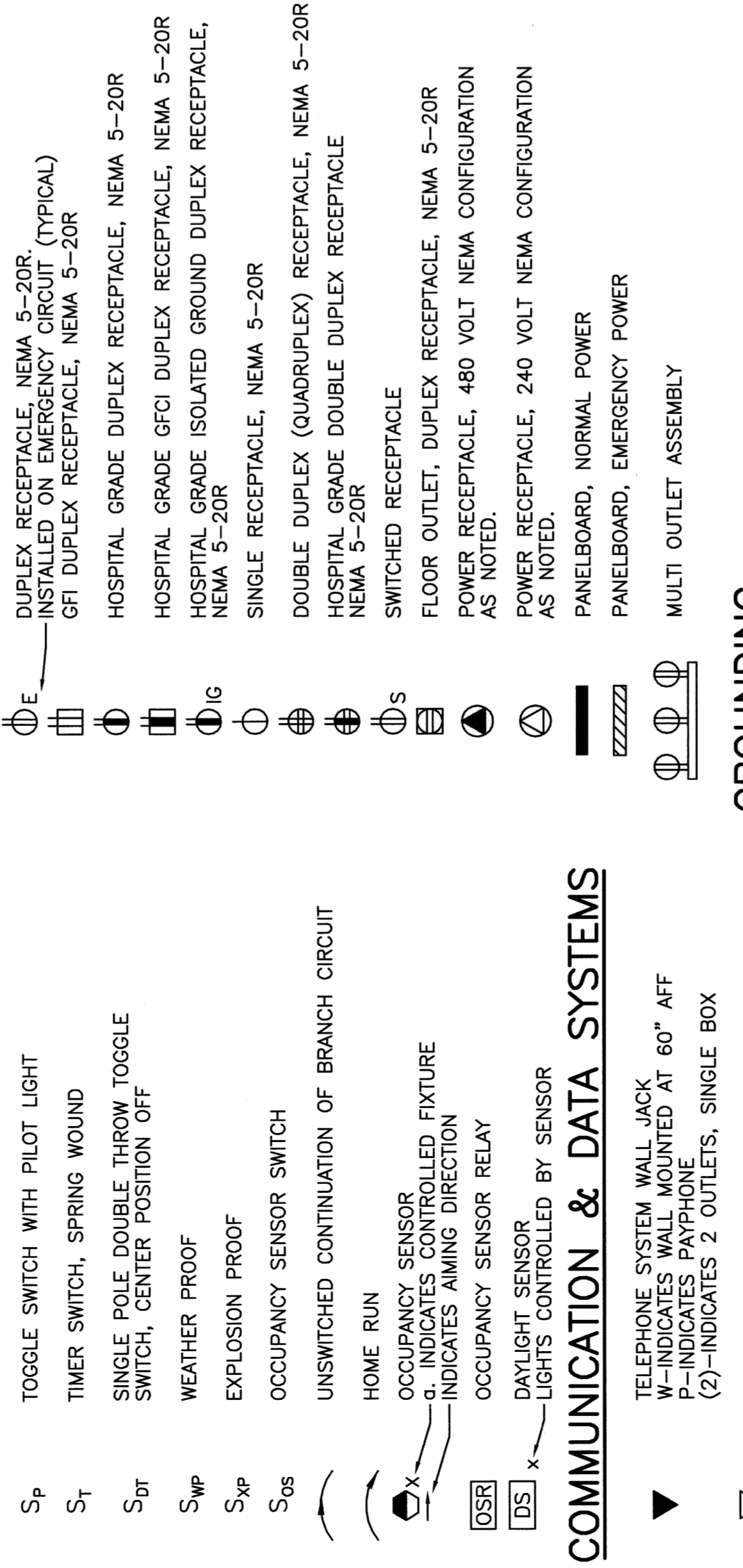
LIGHTING



SECURITY SYSTEMS



COMMUNICATION & DATA SYSTEMS



ISSUED FOR CONSTRUCTION 9-12-08. Includes project information, scale, and revision table.

SMRTI logo and project name: MAINE MEDICAL CENTER - LL BEAN WING 2ND FLOOR INPATIENT SERVICES. Includes legend and general notes.

GENERAL NOTE: ALL GENERAL NOTES, SYMBOLS, LISTS, AND DETAILS ARE TO BE CONSULTED AND APPLICABLE TO ALL ELECTRICAL DRAWINGS FOR THIS PROJECT.

GROUNDING and NURSE CALL SYSTEM symbols and descriptions.

LINE TYPES and GROUNDING symbols and descriptions.

GROUNDING and NURSE CALL SYSTEM symbols and descriptions.