

**NOTE:**  
1. SEE SHEET P-001 FOR LEGEND AND ABBREVIATIONS.

**MEDICAL GAS ALARM PANEL SCHEDULE**

VALVE BOX No.	SERVES	GAS			
		OXYGEN	VACUUM	MEDICAL AIR	NITROUS OXIDE
MGAP-1	PATIENT ROOMS	X	X	X	X
MGAP-2	ORs	X	X	X	X

NOTES:

**DRAIN SCHEDULE**

TAG	APPLICATION	TYPICAL UNIT MFR & MODEL NO.	DESCRIPTION	NOTES
FDA	PATIENT BATHROOM	ZURN #ZN-415-6BP	FLOOR AND SHOWER DRAIN COATED CAST IRON BODY ADJUSTABLE NICKEL BRONZE STRAINER	1, 2

NOTES:  
1. 1/2" TRAP PRIMER CONNECTION. SINGLE DRAIN APPLICATIONS: PRECISION PLUMBING PRODUCTS #PO-500. MULTIPLE DRAIN APPLICATIONS: PRECISION PLUMBING PRODUCTS #PS-3 SUPPLY TUBE & #DU-2.3 OR 4 DISTRIBUTION UNIT.  
2. NO HUB OUTLET

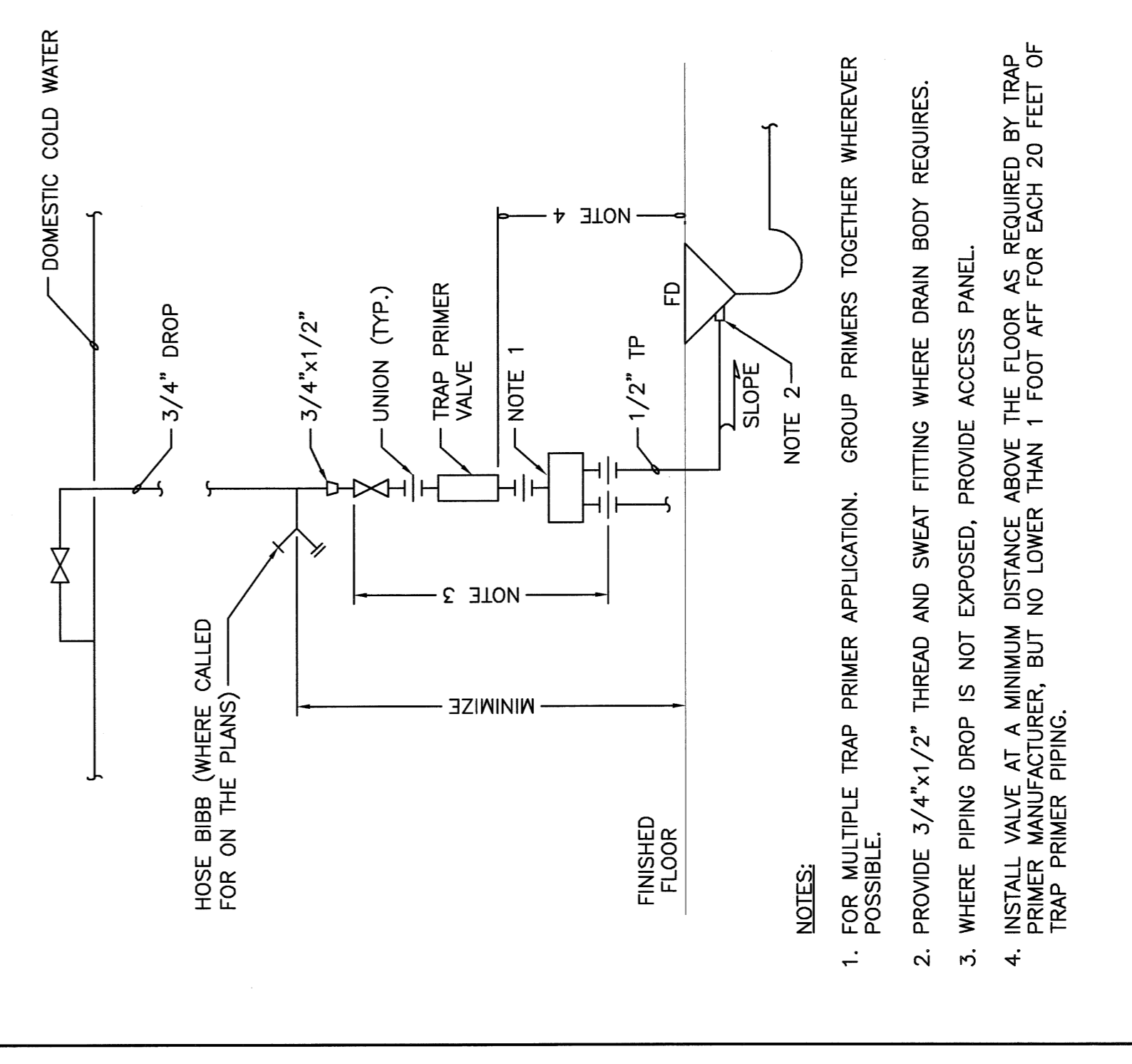
**SHOCK ABSORBER SCHEDULE**

TYPE	FIXTURE UNIT RATING	BASIS OF DESIGN	
		MANUF.	FIGURE NO.
'A'	1-10	ZURN	100
'B'	12-32	ZURN	200
'C'	33-60	ZURN	300
'D'	61-113	ZURN	400
'E'	114-154	ZURN	500
'F'	155-330	ZURN	600

**PLUMBING FIXTURE SCHEDULE**

TAG	DESCRIPTION	FIXTURE	TRIM	SUPPORT	CW	HW	WASTE	VENT	NOTES
WCA	WALL MOUNTED WATER CLOSET-ADA	AMERICAN STANDARD #2257.103 "AFWALL" VITREOUS CHINA SIPHON JET TYPE, 1-1/2" TOP SPUD, 1.6 GPF	CHURCH #650A-SSC SEAT - WHITE	ZURN #Z-1203 / Z1204	1"	-	4"	2"	1, 3
WCB	WALL MOUNTED WATER CLOSET - ADA	AMERICAN STANDARD #2257.103 "AFWALL" VITREOUS CHINA SIPHON JET TYPE, 1-1/2" TOP SPUD, 1000 LB CAPACITY	CHURCH #650A-SSC SEAT - WHITE	ZURN #Z1203-NXB	1"	1/2"	4"	2"	1, 3
WC-C	FLOOR MOUNTED WATER CLOSET - ADA	AMERICAN STANDARD #2305.100 "MADERA" VITREOUS CHINA SIPHON JET TYPE, 1-1/2" TOP SPUD, 1.6 GPF	CHURCH #650A-SSC SEAT - WHITE	FLOOR MOUNT FLOOR MOUNT FIXTURE	1"	1/2"	4"	2"	1, 3
WC-D	WALL MOUNTED WATER CLOSET-ADA	AMERICAN STANDARD #2257.103 "AFWALL" VITREOUS CHINA SIPHON JET TYPE, 1-1/2" TOP SPUD, 1.6 GPF	CHURCH #650A-SSC SEAT - WHITE	MIFAB #MC-12	1"	-	4"	2"	1, 3
LAV-A	WALL MOUNTED LAVATORY-ADA	AMERICAN STANDARD #0355.012 "LUCERNE" VITREOUS CHINA (3) HOLES PUNCHED FOR FAUCET, 4" CENTERS AND CONCEALED ARM SUPPORT	MOQUIRE LOOSE KEY ANGLE STOPS, ESCUTCHEONS AND RISERS- CHROME PLATED	ZURN #Z-1231	1/2"	1/2"	1-1/2"	1-1/2"	1, 3
LAV-B	WALL MOUNTED LAVATORY-ADA	AMERICAN STANDARD # 0355.012 "LUCERNE" VITREOUS CHINA (3) HOLES PUNCHED FOR FAUCET, 4" CENTERS AND CONCEALED ARM SUPPORT	MOQUIRE LOOSE KEY ANGLE STOPS, ESCUTCHEONS AND RISERS- CHROME PLATED	ZURN #Z-1231	1/2"	1/2"	1-1/2"	1-1/2"	1, 3
SK-A	GENERAL USE SINK COUNTER TOP DROPH-IN-ADA	JUST #SL-ADA-1915A-GR 3/4" SS SELF-RIMMING, 3 HOLES, CENTER DRAIN	MOQUIRE LOOSE KEY ANGLE STOPS, ESCUTCHEONS AND RISERS- CHROME PLATED	-	1/2"	1/2"	1-1/2"	1-1/2"	2
SK-B	GENERAL USE SINK COUNTER TOP DROPH-IN-ADA	JUST #SL-ADA-1921A-GR 3/4" SS SELF-RIMMING, 3 HOLES, CENTER DRAIN	MOQUIRE LOOSE KEY ANGLE STOPS, ESCUTCHEONS AND RISERS- CHROME PLATED	-	1/2"	1/2"	1-1/2"	1-1/2"	2
SHA	36" X 36" PATIENT SHOWER-ADA	TILED SHOWERS BY OTHERS. PROVIDE TRIM ONLY.	MOQUIRE LOOSE KEY ANGLE STOPS, ESCUTCHEONS AND RISERS- CHROME PLATED	-	1/2"	1/2"	-	-	4, 5
SH-B	60" X 30" PATIENT SHOWER-ADA	TILED SHOWER BY OTHERS. PROVIDE TRIM ONLY.	MOQUIRE LOOSE KEY ANGLE STOPS, ESCUTCHEONS AND RISERS- CHROME PLATED	-	1/2"	1/2"	-	-	4, 5
TB-A	TUB - NOT PLUMBED	AQUARIUS #68030-TOCS WHITE GELCOAT TUB - 60" X 31, 87"	-	-	NA	NA	NA	NA	

NOTES:  
1. PROVIDE PDI SIZED SHOCK ABSORBER WITH ISOLATION VALVE, ACCESSIBLE  
2. PROVIDE AIR CHAMBERS ON HW & CW CONNECTIONS  
3. REFER TO ARCHITECTURAL DRAWINGS FOR SHOWER HEAD MOUNTING HEIGHT.  
4. REFER TO ARCHITECTURAL DRAWINGS FOR SHOWER CURTAIN, HOOKS AND FULL WATER RETENTION STRIP.  
5. PROVIDE 1" STAINLESS STEEL CURTAIN ROD, ANTI-BACTERIAL SHOWER CURTAIN, HOOKS AND FULL WATER RETENTION STRIP.



**A14 TRAP SEAL PRIMER DETAIL**

**ISSUED FOR CONSTRUCTION**  
9-12-08

PROJECT NAME: MAINE MEDICAL CENTER - L.L. BEAN WING 2ND FLOOR IMPATIENT SERVICES  
PORTLAND, MAINE

ARCHITECTURE: SMRT  
ENGINEERING: SMRT  
PLANNING: SMRT  
INTERIOR DESIGN: SMRT  
COMMISSIONING: SMRT

144 Fort Street, 20th Fl. 04104  
Portland, Maine 04104  
Tel: (207) 772-3846  
Fax: (207) 772-6070  
www.smrt.com

SCALE: 1/8" = 1'-0"  
DATE: 9-12-08

PROJECT NUMBER: 08029  
JOB NUMBER: 08029  
DATE OF RECORD: P-601-08029  
SHEET NO.: P-601  
SHEET NO.: P-601