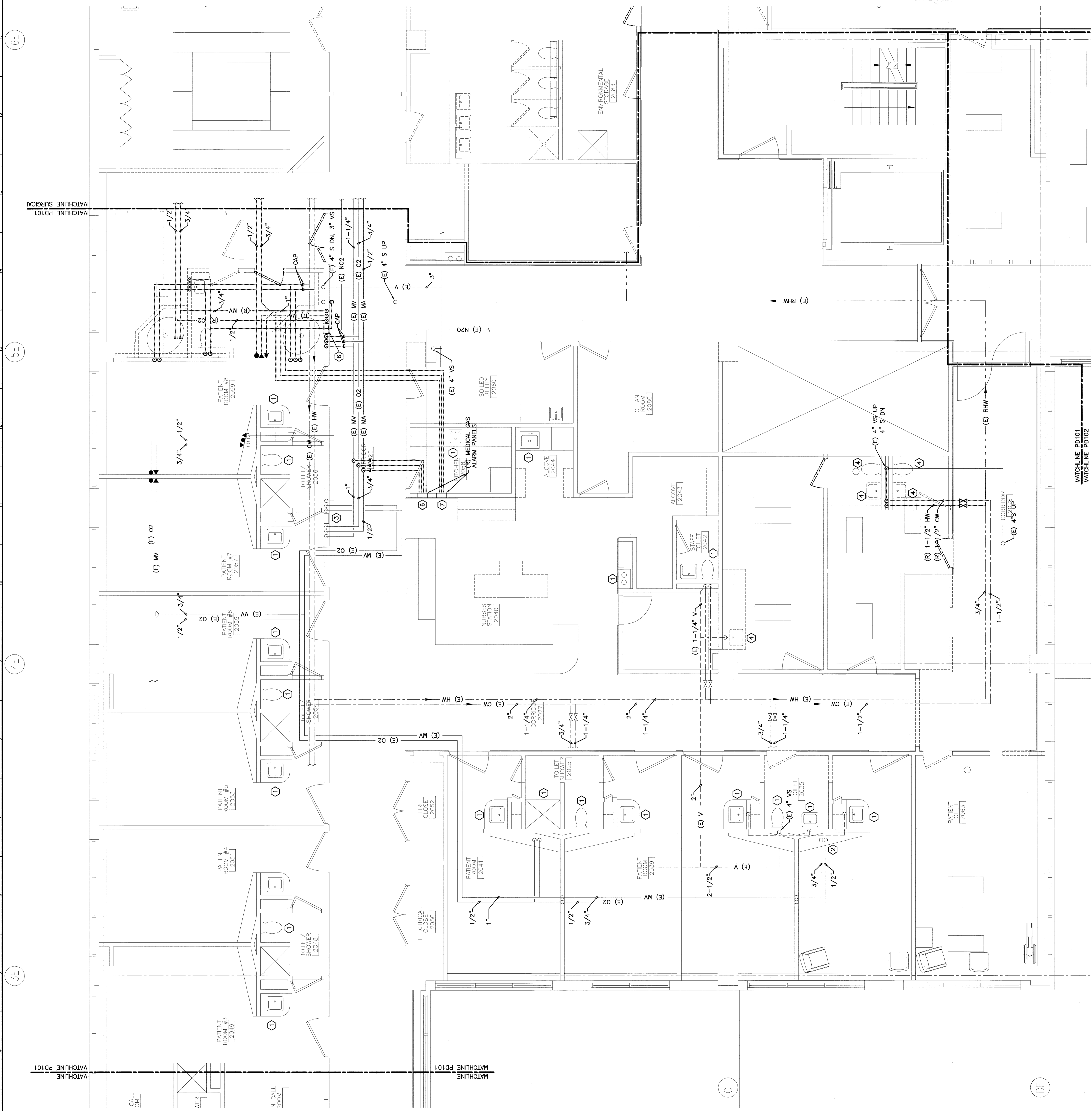


NOTE:

- SEE SHEET P-001 FOR LEGEND AND ABBREVIATIONS.
- PATCH FLOOR TO MATCH EXISTING AS/F NECESSARY.

KEYED NOTES:

- EXISTING PLUMBING FIXTURE(S) AND ASSOCIATED PIPING TO REMAIN IN SERVICE.
- EXISTING MEDICAL GAS OUTLET(S) TO REMAIN.
- EXISTING MEDICAL GAS VALVE BOX/ ALARM PANEL AND ASSOCIATED PIPING TO REMAIN.
- DISCONNECT AND REMOVE EXISTING PLUMBING FIXTURE AS INDICATED. REMOVE EXISTING PIPING TO NEAREST CONCEALED JOINT BEHIND FINISHED SURFACES OR AS INDICATED.
- REMOVE EXISTING MEDICAL GAS OUTLETS. REMOVE AND CAP OR ROOMS. REMOVE ASSOCIATED PIPING BACK TO NEAREST MAIN (OR AS INDICATED) AND CAP.
- REMOVE EXISTING MEDICAL GAS ALARM PANEL SERVING LD AND "OBSERVATION ROOM". REMOVE ASSOCIATED PIPING AS INDICATED.
- REMOVE EXISTING MEDICAL GAS ALARM PANEL LABELLED "OBSERVATION ROOM". REMOVE ASSOCIATED PIPING AS INDICATED.



A1	PARTIAL FLOOR PLAN
	1/4"=1'-0"
PROJECT No. 08099 SHEET No. PD101 DATE 9-12-08 ISSUED FOR CONSTRUCTION 9-12-08	
ISSUED FOR CONSTRUCTION 9-12-08	
CURRENT ISSUE STATUS:	
SMRTI MAINE MEDICAL CENTER - L.L. BEAN WING 2ND FLOOR INPATIENT SERVICES PORTLAND, MAINE	
ARCHITECTURE ENGINEERING PLANNING INTERIOR DESIGN COMMISSIONING	
141 Elm Street, Box 618 Portland, Maine 04101 Tel: (207) 772-2866 Fax: (207) 772-2867 Web: www.smrti.com	
PLUMBING AND MED GAS DEMOLITION PART PLAN	
SHEET TITLE:	
SCALE: 1/4" = 1'-0"	DATE: 9-12-08
PROJECT NUMBER: CIP	GRAPHIC SCALE: 0'
JOB CAPTAIN: MRRBGS	
DATE OF RECORD: NRE	SHEET No. PD101
SMRTI CAD FILE: PD101-08099	PROJECT No. 08099