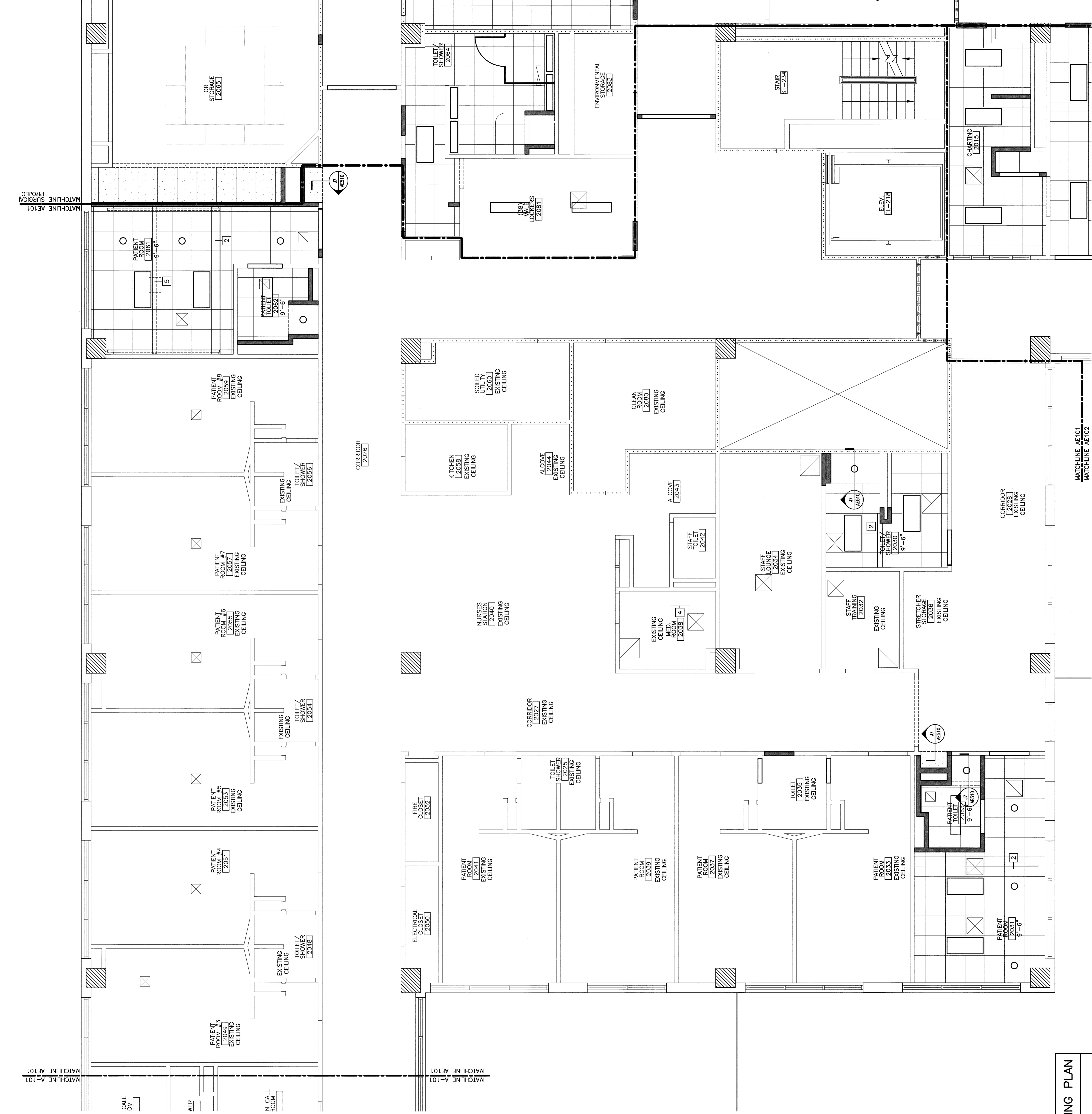


- REFLECTED CEILING NOTES**
1. FIRE SPRINKLERS SHALL BE LOCATED IN ALIGNMENT WITH OTHER CEILING ITEMS, TYPICALLY.
  2. FIRE SPRINKLERS SHALL BE CENTERED IN CEILING TILE.
  3. FIRE SPRINKLERS SHALL BE PLACED TO COORDINATE WITH LIGHT FIXTURE POSITIONS INDICATED.
  4. ALSO, CEILING ITEMS AS SHOWN WITH COMMON CENTERLINES TYPICALLY CENTER ITEMS IN CEILINGS OR IN AREAS UNLESS INDICATED OTHERWISE.
  5. REFER TO ROOM FINISH SCHEDULE FOR CEILING HEIGHTS AND CEILING FINISHES TO BE PROVIDED.
  6. EXCEPT WHERE INDICATED, CENTER CEILING GRIDS IN ROOMS. USE HALF TILES OR GREATER PERIMETERS AS POSSIBLE.
  7. PROVIDE ACCESS PANELS AS REQUIRED IN GMB CEILINGS FOR ACCESS TO MECHANICAL VALVES/ CONTROLS. REFERENCE MECHANICAL.

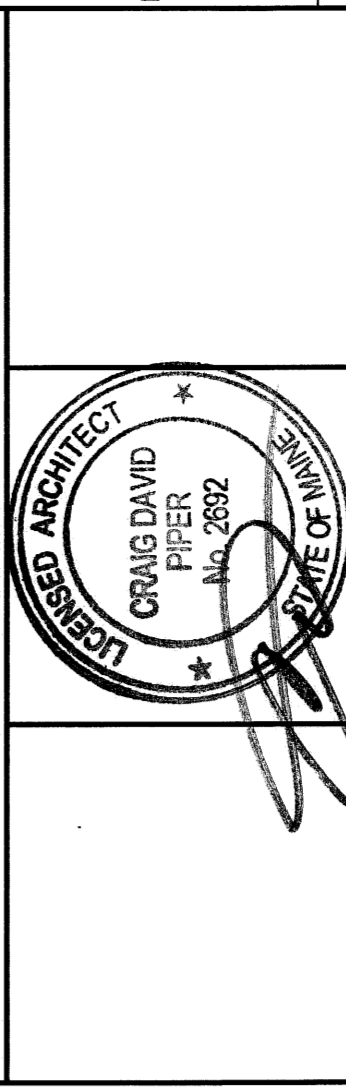
- KEYED NOTES:**
1. BOTTOM OF SOFFIT TO BE 3" LOWER THEN LOWEST ADJACENT CEILING AS SCHEDULED.
  2. CURTAIN TRACK
  3. CEILING MOUNTED PROJECTOR
  4. IV TRACK

- SYMBOL LEGEND**
- 2x6 SUSPENDED CEILING PANEL AND GRID ASSEMBLY
  - 2x2 SUSPENDED CEILING PANEL AND GRID ASSEMBLY
  - 2x2 SUSPENDED ACT 5 ("WOOD LOOK") CEILING PANEL AND GRID ASSEMBLY
  - GMB CEILING
  - 2x4 LAY-IN LIGHT FIXTURE
  - 1x4 PENDANT LIGHT FIXTURE
  - DOWN LIGHT
  - CEILING MOUNTED EXIT LIGHT
  - RETURN AIR GRILLE
  - SUPPLY AIR GRILLE
  - EXHAUST AIR GRILLE
  - RADIANT CEILING PANEL SEE MECH
  - CEILING MOUNTED SMOKE DETECTOR
  - ACCESS PANEL - FINAL QUANTITIES, SIZES AND LOCATIONS TO BE DETERMINED IN FIELD.



| REV. | ISSUED FOR CONSTRUCTION | DATE    |
|------|-------------------------|---------|
| 0    |                         | 9-12-08 |

**ISSUED FOR CONSTRUCTION**  
9-12-08



144 Fore Street, P.O. Box 618  
Portland, Maine 04101  
Tel: (207) 773-2846  
Fax: (207) 773-2848  
www.smrta.com

**SMRTI**  
MAINE MEDICAL CENTER - L.L. BEAN WING 2ND FLOOR  
INPATIENT SERVICES  
PORTLAND, MAINE

**PARTIAL REFLECTED CEILING PLAN**

SHEET TITLE: PARTIAL REFLECTED CEILING PLAN  
SCALE: 1/4" = 1'-0" DATE: 9-12-08  
PROJECT NUMBER: 07 GRAPHIC SCALE: 0'  
JOB CAP/DRWING: MDR  
DATE OF RECORD: 07  
SMRTI CAD FILE: AE103-08099  
PROJECT NO.: 08099

A1 PARTIAL REFLECTED CEILING PLAN  
1/4"=1'-0"