

NOTE:
 1. SEE SHEET P-001 FOR LEGEND AND ABBREVIATIONS.

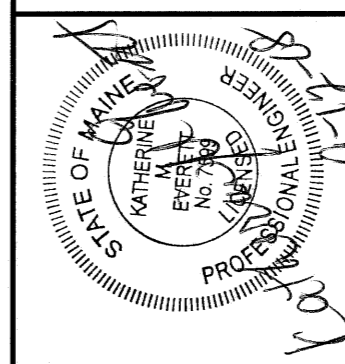
KEYED NOTES:

- ROUTE MEDICAL GAS PIPING IN MED GAS CHASE. SEE MECHANICAL DRAWING A210 FOR DETAILS AND OUTLET LOCATIONS.
- NOT USED
- 1/2" TP-DN
- CONNECT 1/2" CW AND 1/2" HW EACH TO LANA FROM PLUMBING CHASE. CONNECT 3/4" CW AND 3/4" HW EACH TO EEB MOUNTED TO WALL BENEATH LANA. PROVIDE SHUT-OFF VALVES ON INLETS. ROUTE 3/4" TW FROM EEB TO EEB AND CONNECT.
- 1-1/2" V RISE AND 1-1/2" W THROUGH WALL TO PLUMBING CHASE. CTE 4" S DN.
- 1/2" CW AND 1/2" HW-DROP.
- RUN 1-1/2" WASTE WITHIN WALL TO 4" S DN.
- 1-1/2" CW-DROP. PROVIDE SHOCK ABSORBER WITH SHUT-OFF AT TOP OF DROP-ACCESSIBLE.
- 3" IW FOR ICE AND SODA MACHINES. LOCATE IN WALL (WITH ACCESS PANEL) OR INSIDE CABINET.

REV.	ISSUED FOR CONSTRUCTION	DESCRIPTION	DATE
0			9-12-08

ISSUED FOR CONSTRUCTION
 9-12-08

CURRENT ISSUE STATUS



SMRTI
 ARCHITECTURE
 ENGINEERING
 PLANNING
 INTERIOR DESIGN
 COMMISSIONING

144 Fore Street, P.O. Box 618
 Portland, Maine 04104
 Tel: (207) 772-3846
 Fax: (207) 772-8700
 www.smrti.com

MAINE MEDICAL CENTER - LL BEAN WING 2ND FLOOR
 SURGICAL SERVICES
 PORTLAND, MAINE

PLUMBING AND MED GAS
 PARTIAL PLAN

SHEET TITLE

SCALE: 1/4"=1'-0" DATE: 9-12-08

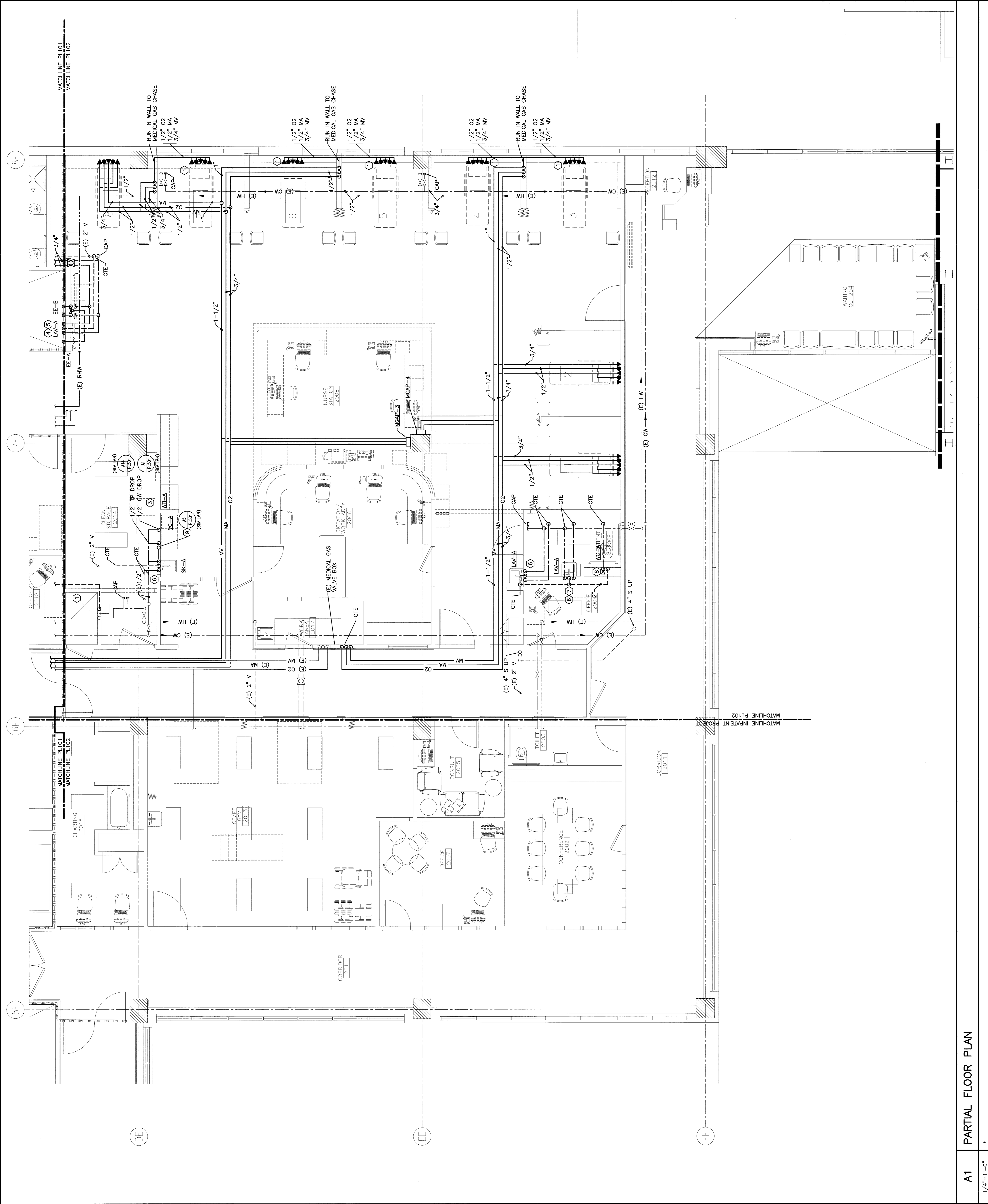
PROJECT MANAGER: COP GRAPHIC SCALE: 0'

DATE DRAWN: BGS

DATE CHECKED: KNE SHEET NO.

SHEET CAD FILE: PL 102-08098

PROJECT NO.: PL102



A1 PARTIAL FLOOR PLAN

1/4"=1'-0"