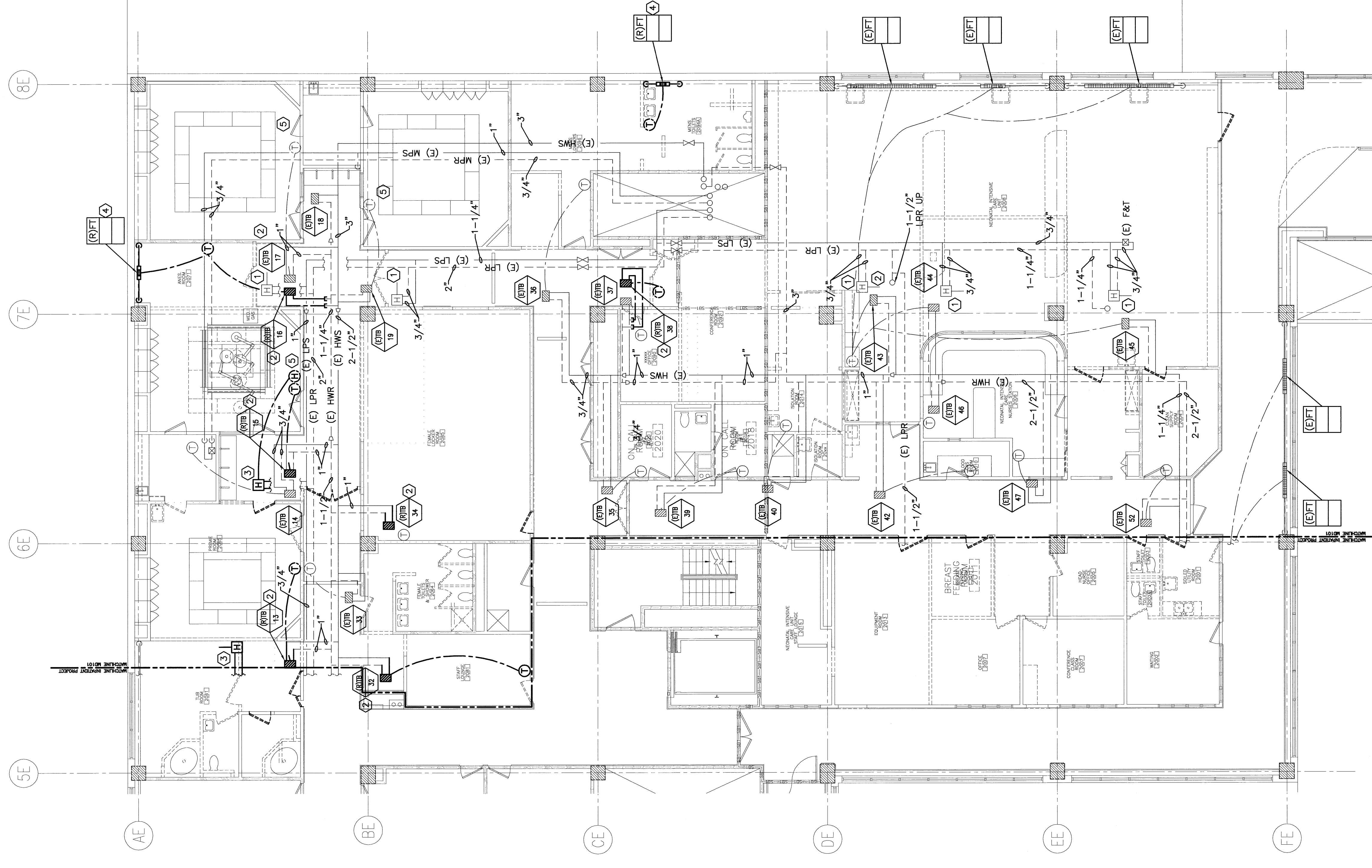


NOTE:

1. SEE SHEET M-001 FOR LEGEND AND ABBREVIATIONS.
2. REMOVE EXISTING CONTROLS AND CONTROLS HARDWARE ON ALL EXISTING TO REMAIN TERMINAL (TB) BOXES, INCLUDING AIRFLOW SENSORS, DAMPER ACTUATORS, HW CONTROL VALVE AND TEMPERATURE SENSORS.

KEYED NOTES:

- ① EXISTING DUCT MOUNTED HUMIDIFIER AND ASSOCIATED PIPING AND CONTROLS TO REMAIN.
- ② REMOVE EXISTING TERMINAL BOX (TB) AND ASSOCIATED CONTROLS. REMOVE EXISTING HWS/R BACK TO NEAREST MAIN OR AS INDICATED.
- ③ REMOVE EXISTING DUCT MOUNTED HUMIDIFIER AND ASSOCIATED PIPING AND CONTROLS. REMOVE EXISTING STEAM AND CONDENSATE PIPING BACK TO NEAREST MAIN OR AS INDICATED.
- ④ CUT AND CAP HWS/R PIPING IN CEILING OF FLOOR BELOW.
- ⑤ REMOVE EXISTING CONTROL DEVICES IN OR #01, #02 AND #03. PROVIDE NEW TEMPERATURE HUMIDITY AND PRESSURE INDICATORS AS SHOWN IN NEW CONDITIONS PLAN.



REV.	ISSUED FOR CONSTRUCTION	DESCRIPTION	DATE
0			9-12-08

ISSUED FOR CONSTRUCTION
9-12-08

CURRENT ISSUE STATUS:



144 Fore Street, 2nd Floor
Portland, Maine 04104
Tel: (207) 772-8000
Fax: (207) 772-8005
www.smrti.com

SMRTI
ARCHITECTURE
ENGINEERING
PLANNING
INTERIOR DESIGN
COMMISSIONING

FORWARD TITLE
MAINE MEDICAL CENTER - L.L. BEAN WING 2ND FLOOR
SURGICAL SERVICES

FORWARD TITLE
HVAC PIPING
DEMOLITION PLAN

SHEET TITLE	SCALE	DATE	GRAPHIC SCALE
	1/8" = 1'-0"	9-12-08	0'

PROJECT MANAGER	JOB CAP/DRWN	DATE OF RECORD	SMRTI CAD FILE	PROJECT No.	SHEET No.
BGG	KRE		MD102-00098	00098	MD102