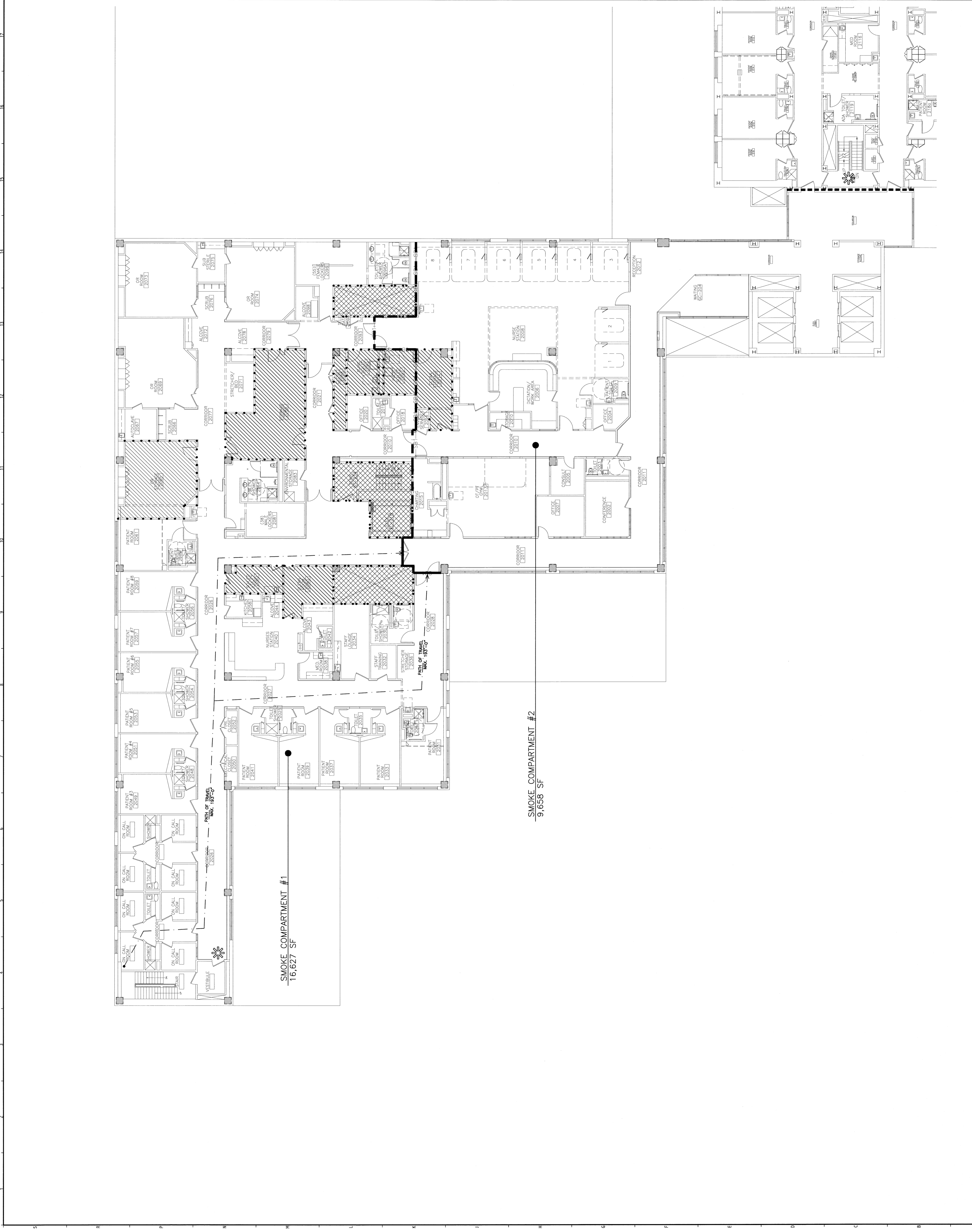


CODE COMPLIANCE NOTES:

- SEE 0001 FOR APPLICABLE CODES
- ALL PATIENT CORRIDORS SHALL BE A MINIMUM WIDTH OF 8'-0" CLEAR.
- FLOORS SHALL BE CONSTRUCTED AS 2HR FIRE RATING.
- AT ALL SMOKE PARTITIONS, SMOKE COMPARTMENT, 1HR AND 2HR WALLS/PARTITIONS, CONTRACTOR SHALL STENCIL EACH WALL ABOVE CEILING LEVEL WITH A LABEL DESIGNATING THE SMOKE COMPARTMENT, SMOKE PARTITION, SMOKE WALLS AND STENCILING SHALL BE PROVIDED AT APPROXIMATELY 10'-0" INTERVALS.

KEY:

- LIMITS OF SMOKE COMPARTMENT (1-HR RATING)
- TRAVEL DISTANCE
- 1-HOUR PARTITION
- 2-HOUR PARTITION
- SMOKE COMPARTMENT
- 2HR SEPARATION
- DESIGNATES POINT OF EGRESS
- 1-HOUR RATED AREA
- 2-HOUR RATED AREA

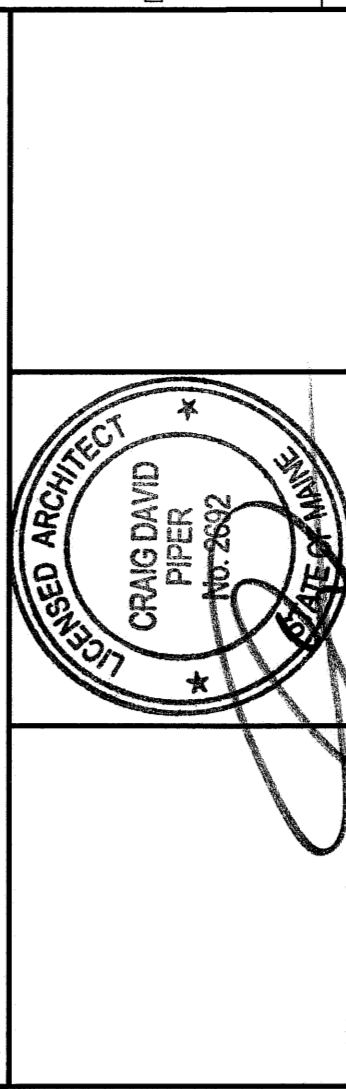


SMOKE COMPARTMENT #1
16,627 SF

SMOKE COMPARTMENT #2
9,658 SF

REV.	ISSUED FOR CONSTRUCTION	DESCRIPTION	DATE
0			9-12-08

ISSUED FOR CONSTRUCTION
9-12-08



144 Fore Street P.O. Box 618
Portland, Maine 04104
Tel: (207) 772-8846
Fax: (207) 772-8038
www.smrti.com

SMRTI
ARCHITECTURE
ENGINEERING
PLANNING
INTERIOR DESIGN
COMMISSIONING

MAINE MEDICAL CENTER - LL BEAN WING 2ND FLOOR
SURGICAL SERVICES
PORTLAND, MAINE

CODE COMPLIANCE STRATEGY

SHEET TITLE:	DATE:
CODE COMPLIANCE STRATEGY	9-12-08

SCALE:	GRAPHIC SCALE:
3/32" = 1'-0"	0'

PROJECT NUMBER:	CDP	MOR

A/E OF RECORD:	CDP	SHEET No.

SMRT CAD FILE:	PROJECT No.
A-102-08098	08098

CODE COMPLIANCE STRATEGY PLAN

A1

3/32"=1'-0"