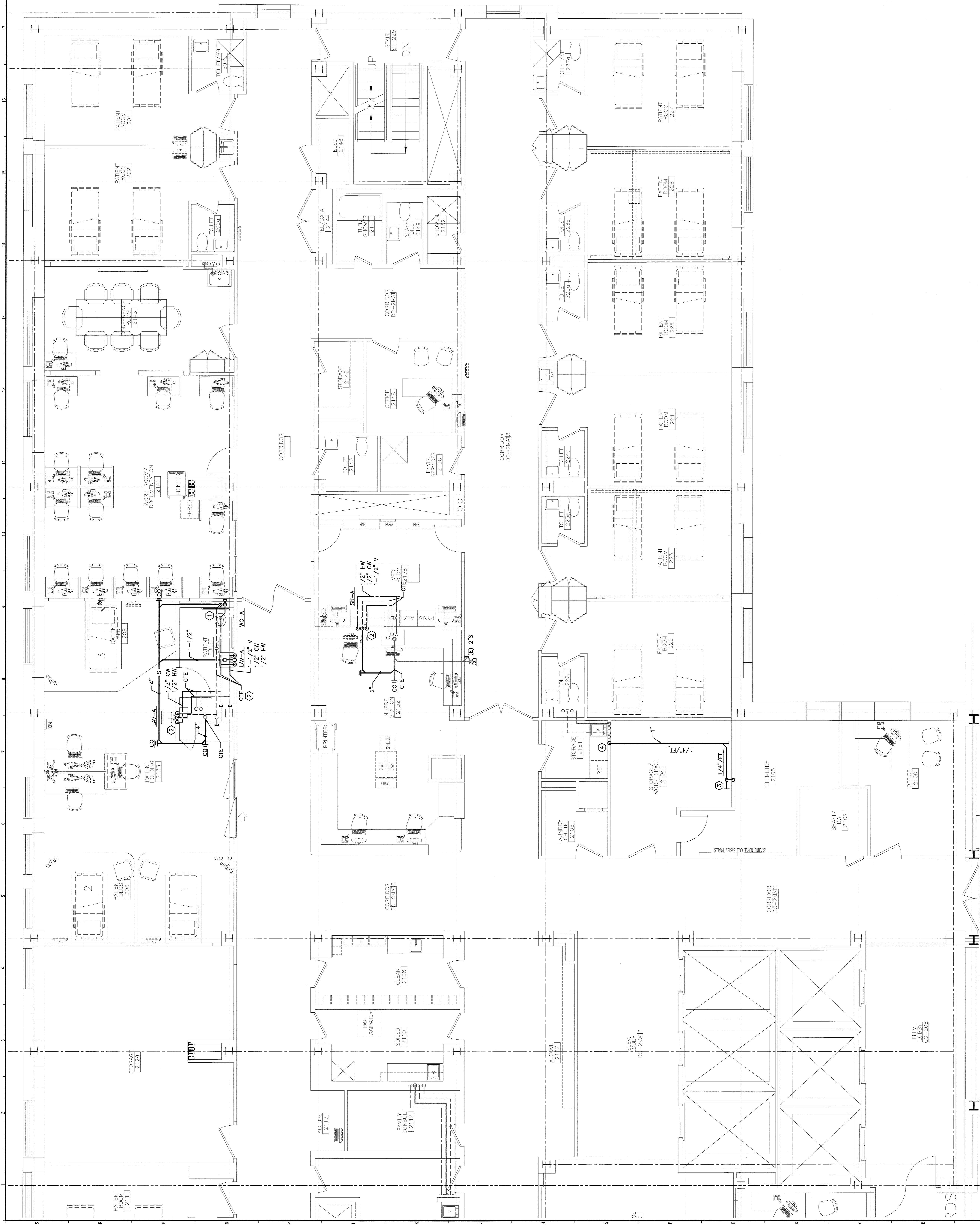


NOTES:

- SEE NOTES ON P-001 FOR LEGENDS AND ABBREVIATIONS.
- SANITARY PIPING IS LOCATED IN CEILING OF FLOOR BELOW.

KEYED NOTES:

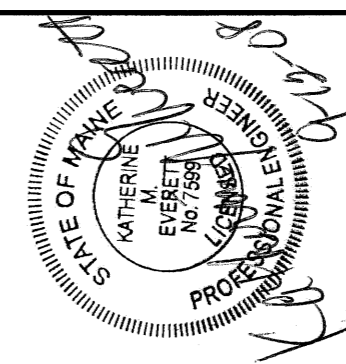
- 1-1/2" CW AND 1/2" HW ABOVE SINK; ABSORBER WITH SHUT-OFF VALVE AT TOP OF DROP - ACCESSIBLE.
- 1-1/2" V-RISE, 2" W-DN, 1/2" CW AND 1/2" HW-DROP.
- 3/4" PUMPED CONDENSATE FROM AC-1 INTEGRAL CONDENSATE PUMP.
- 1" SD-DROP TO WITHIN 2" OF INDIRECT WASTE IN WALL OR UNDER COUNTER. SEE DETAIL AS/P-601 (SIMILAR).



REV.	ISSUED FOR CONSTRUCTION	DESCRIPTION	DATE
0			9-12-08

ISSUED FOR CONSTRUCTION
9-12-08

CURRENT ISSUE STATUS:



14476 Richards, Esq. ES
Portland, Maine 04104
Tel: (207) 733-2846
Fax: (207) 732-8070
www.mefac.com

SMRT

ARCHITECTURE
ENGINEERING
PLANNING
INTERIOR DESIGN
COMMISSIONING

MAINE MEDICAL CENTER - RICHARDS WING 2ND FLOOR
INPATIENT SERVICES
PORTLAND, MAINE

PARTIAL SECOND FLOOR
DWV PART PLAN

SHEET TITLE	1/4" = 1'-0" DATE	9-12-08
PROJECT NUMBER	CDP GRAPHIC SCALE	0'
JOB CAPTION	REVISION	
DATE OF RECORD	NAME	SHEET No.
SMRT JOB FILE	PL 02-08103	PL 102
PROJECT No.	08103	

A1 PARTIAL FLOOR PLAN

1/4"=1'-0"