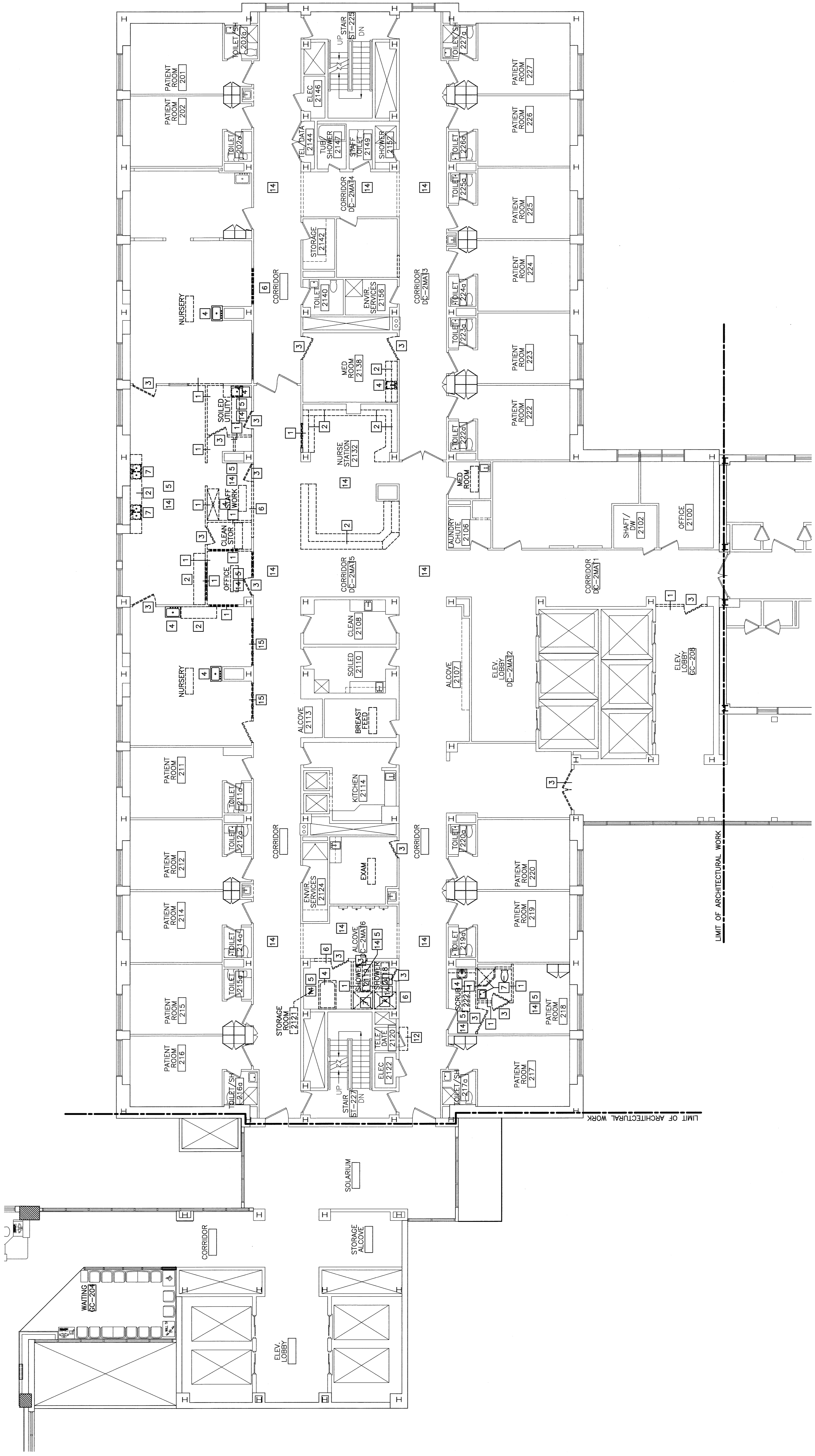


GENERAL DEMOLITION NOTES:

1. CONTACT ARCHITECT THROUGH BFI WITH QUESTIONS OF UNIDENTIFIED OBJECTS THAT WILL BE REQUIRED TO BE REMOVED.
2. COORDINATE EXTENT OF DEMOLITION WITH LOCATIONS OF PARTITIONS DESCRIBED ON PLANS AND WITH LOCATIONS OF FINISHES NOTED AS EXISTING TO REMAIN.
3. ANY WALL, PARTITION OR SURFACE DISTURBED BECAUSE OF NEW WORK OR DEMOLITION SHALL BE PATCHED AND FINISHED TO MATCH EXISTING CONDITIONS. MATCH EXISTING CONSTRUCTION FINISHES, CONTINUITY AND FIRE RATINGS UNLESS NOTED OTHERWISE.
4. PROTECT ALL FINISHES, MATERIALS AND EQUIPMENT NOTED AS EXISTING TO REMAIN. CONTRACTOR SHALL BE RESPONSIBLE TO PROTECT ALL FINISHES, MATERIALS AND EQUIPMENT DAMAGED DURING CONSTRUCTION.
5. CLEARLY IDENTIFY & TAG MECHANICAL, PLUMBING/ELECTRICAL FIXTURES OR EQUIPMENT THAT ARE STILL IN USE PRIOR TO DEMOLITION TO AVOID ACCIDENTAL REMOVAL.
6. SEE M.E.P. DRAWINGS FOR THE SCOPE OF DEMOLITION IN THOSE DISCIPLINES.
7. FOR EXTENTS OF CEILING GRID REMOVALS AND ADJUSTMENTS REFER TO REFLECTED CEILING PLANS.
8. DIMENSIONS INDICATED ± ARE EXISTING CONDITION DIMENSIONS TO BE VERIFIED IN FIELD.

DEMOLITION KEY NOTES:

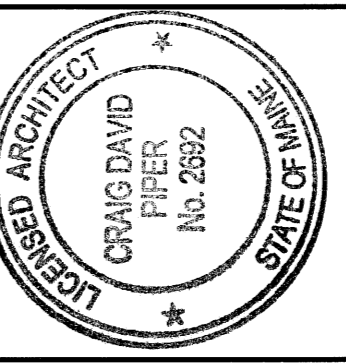
- 1 REMOVE PARTITION COMPLETE.
- 2 REMOVE EXISTING CASEWORK/LOCKERS COMPLETE.
- 3 REMOVE DOOR FRAME & HARDWARE COMPLETE AND SALVAGE OTHER ITEMS TO BE SALVAGED PRIOR TO REMOVAL.
- 4 REMOVE PLUMBING FIXTURE, CAP FLUSH WITH EXISTING WALL OR FLOOR, COORDINATE WITH OWNER THOSE ITEMS TO BE SALVAGED PRIOR TO REMOVAL.
- 5 REMOVE EXISTING FLOORING SYSTEM COMPLETE. PREPARE FOR NEW FLOORING SYSTEM.
- 6 REMOVE PORTION OF PARTITION(INTERIOR OR EXTERIOR) FOR INSTALLATION OF DOOR OR WINDOW. COORDINATE EXTENTS WITH FINISHES TO REMAIN. REFERENCE DOOR SCHEDULE OR WINDOW ELEVATION.
- 7 REMOVE EXISTING FIXTURE. REFERENCE MECHANICAL/ELECTRICAL.
- 8 EXISTING CEILING SYSTEM TO BE REMOVED & REPLACED TO ALLOW MECHANICAL WORK TO BE PERFORMED.
- 9 REMOVE EXISTING WALL FURRING. REMOVE ALL FASTENERS, OTHER MATERIALS AND CLEAN AND PREPARE THE EXPOSED CMU WALL.
- 10 REMOVE WOOD BUMPER GUARDS
- 11 REMOVE FINISH FLOOR MATERIAL (IF ANY) & BASE. PREPARE SURFACE FOR NEW FINISHES AS REQUIRED BY SCHEDULE & SPECS.
- 12 REMOVE CEILING ASSEMBLY COMPLETE. COORDINATE EXTENTS OF REMOVAL WITH PARTITION LOCATIONS AND EXISTING FINISHES TO REMAIN.
- 13 REMOVE CEILING MOUNTED CURTAIN TRACK & CURTAIN
- 14 REMOVE CEILING SYSTEMS COMPLETE I.E. FRAMING MEMBERS, TRACKS WIRES ETC.
- 15 REMOVE EXISTING WINDOW COMPLETE. PREPARE OPENING FOR GMB INFILL



ISSUED FOR CONSTRUCTION
9-12-08

CURRENT ISSUE STATUS:

REV.	ISSUED FOR CONSTRUCTION	DATE
0		9-12-08



144 Elm Street, Suite 404
Portland, Maine 04104
Tel: (207) 772-5846
Fax: (207) 772-0070
www.smrtinc.com



ARCHITECTURE
ENGINEERING
PLANNING
INTERIOR DESIGN
COMMISSIONING

MAINE MEDICAL CENTER - RICHARDS WING 2ND FLOOR
INPATIENT SERVICES
PORTLAND, MAINE

DEMOLITION PLAN

SHEET TITLE	1/8" = 1'-0"	DATE	9-12-08
PROJECT MANAGER	OP	GRAPHIC SCALE	0'
JOB COORDINATOR	PR		
DATE OF RECORD	OP	SHEET NO.	AD101
SMRT CAD FILE	AD101-08103		
PROJECT NO.	08103		

A1 DEMOLITION PLAN

1/8"=1'-0"