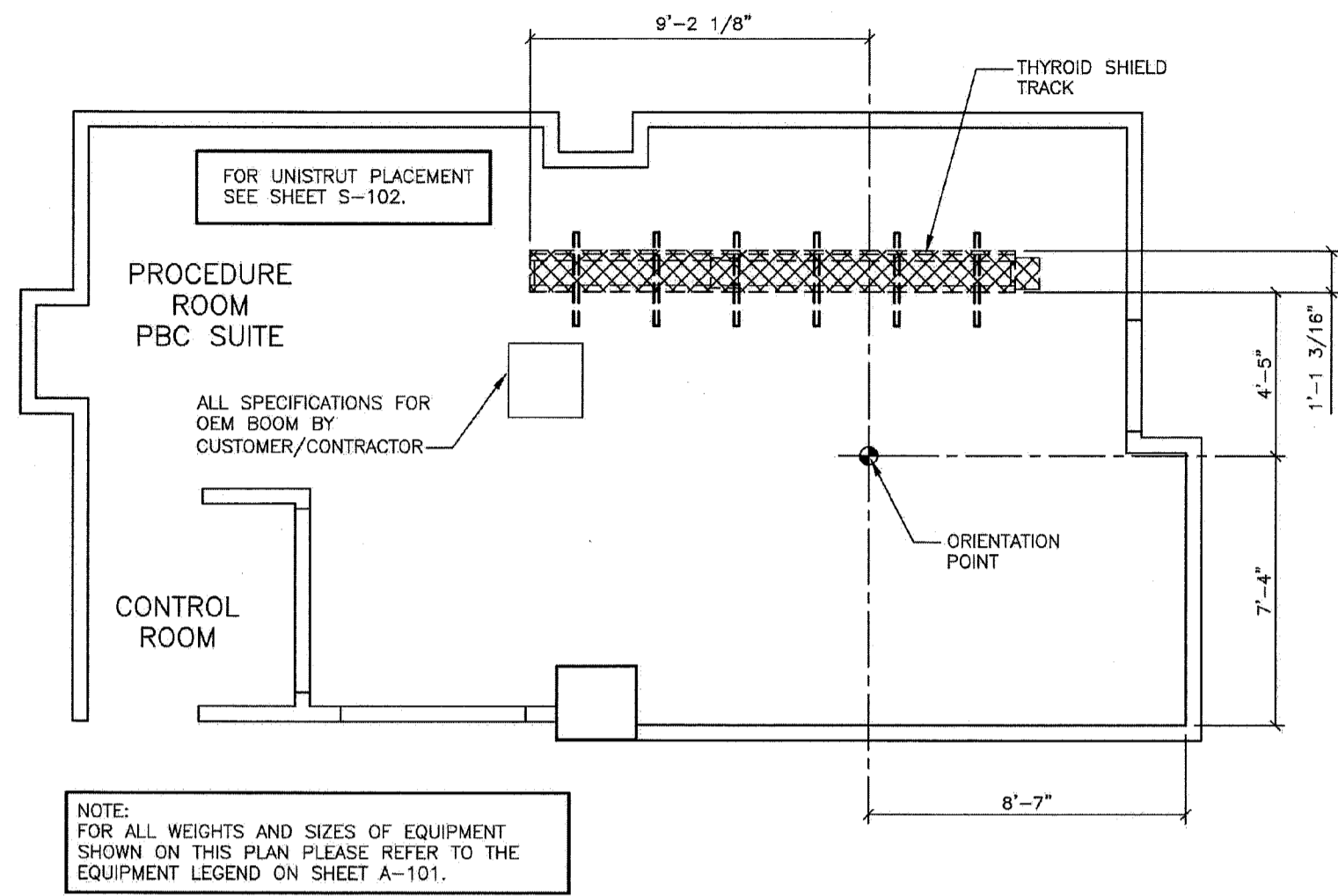
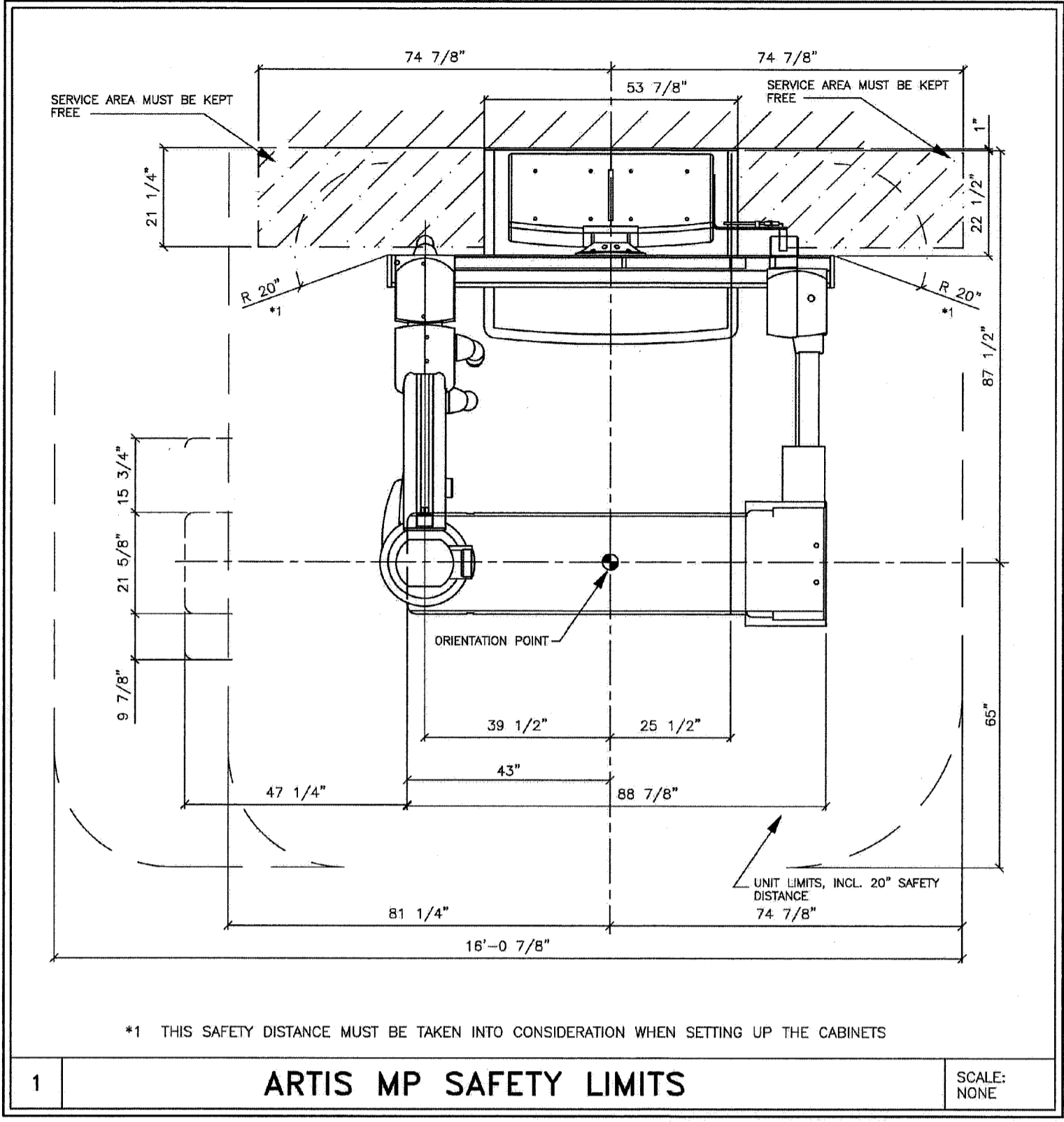


ATTENTION! LIGHTING AND HVAC DUCTS HAVING THE POTENTIAL TO HEAT OR COOL SIEMENS COMPONENTS MUST NOT BE LOCATED WITHIN SIEMENS CEILING RAIL SYSTEMS AS INDICATED BY THE SHADED AREAS ON THIS PLAN. SPRINKLER HEADS MUST NOT BE LOCATED WITHIN THE SHADED AREAS AS WELL. IF REQUIRED, LAMINAR AIRFLOW DIFFUSERS MAY BE LOCATED WITHIN SIEMENS CEILING RAIL SYSTEMS PROVIDED THEY DO NOT EXTEND BELOW THE FINISHED CEILING OR HEAT/COOL SIEMENS EQUIPMENT. IF PLACED WITHIN SIEMENS RAIL SYSTEMS, THE CUSTOMER MUST ACCEPT RESPONSIBILITY FOR THE FACT THAT, DEPENDING ON THE POSITION OF THE CARRIAGE WITHIN THE CEILING RAILS, THERE IS POTENTIAL FOR CERTAIN DIFFUSERS IN THIS AREA TO BE BLOCKED. THE CUSTOMER MUST ALSO ACCEPT RESPONSIBILITY FOR POTENTIAL DIFFICULTIES IN SERVICING THE CUSTOMER'S MECHANICAL EQUIPMENT IN THE CEILING, IF PLACED WITHIN THESE SHADED AREAS. PLEASE COORDINATE THE PLACEMENT OF THESE ITEMS WITH THE SIEMENS PROJECT MANAGER. SIEMENS SHALL BEAR NO RESPONSIBILITY FOR ANY EQUIPMENT DAMAGES RESULTING FROM THE INSTALLATION OF CUSTOMER-SUPPLIED INFRASTRUCTURE NOT ADHERING TO THE ABOVE STATED REQUIREMENTS.



NOTE: FOR ALL WEIGHTS AND SIZES OF EQUIPMENT SHOWN ON THIS PLAN PLEASE REFER TO THE EQUIPMENT LEGEND ON SHEET A-101.



CEILING NOTES

- 1) ALL CEILING MOUNTED LIGHT FIXTURES, MECHANICAL REGISTERS AND SPRINKLER HEADS SHALL BE FLUSH WITH FINISHED CEILING, SHALL BE OUTSIDE OF ALL HATCHED AREAS AND SHALL BE SPECIFIED BY THE ARCHITECT OF RECORD AND SUBSEQUENT CONSULTING ENGINEERS.
- 2) THE ACTUAL CEILING DESIGN AND COORDINATION OF LIGHTING AND MECHANICAL SYSTEMS SHALL BE THE RESPONSIBILITY OF THE ARCHITECT OF RECORD AND HIS SUBSEQUENT CONSULTING ENGINEERS.
- 3) THE CUSTOMER/CONTRACTOR SHALL BE RESPONSIBLE FOR FABRICATING, SUPPLYING AND INSTALLING ALL LIGHT, MECHANICAL AND STRUCTURAL SUPPORTING SYSTEMS. SIEMENS MEDICAL SOLUTIONS INC. IS ONLY RESPONSIBLE FOR THE SUPPLYING, INSTALLING AND CALIBRATION OF SMS EQUIPMENT AS SPECIFIED ON THE EQUIPMENT SCHEDULE AS SHOWN ON SHEET A-101.
- 4) ALL ELECTRICAL AND STRUCTURAL SYSTEMS SHOWN ON THE REFLECTED CEILING PLAN HAVE BEEN COORDINATED WITH THE ARCHITECTURAL EQUIPMENT PLAN (SHEET A-101). ANY CHANGES TO THE SMS EQUIPMENT CONFIGURATION AS SHOWN, DUE TO PLACEMENT OF LIGHTING, STRUCTURAL, ELECTRICAL AND MECHANICAL SYSTEMS, MUST BE APPROVED IN WRITING BY THE SMS PROJECT MANAGER PRIOR TO THE COMPLETION OF CONSTRUCTION DOCUMENTS.

LIGHTING GUIDELINES

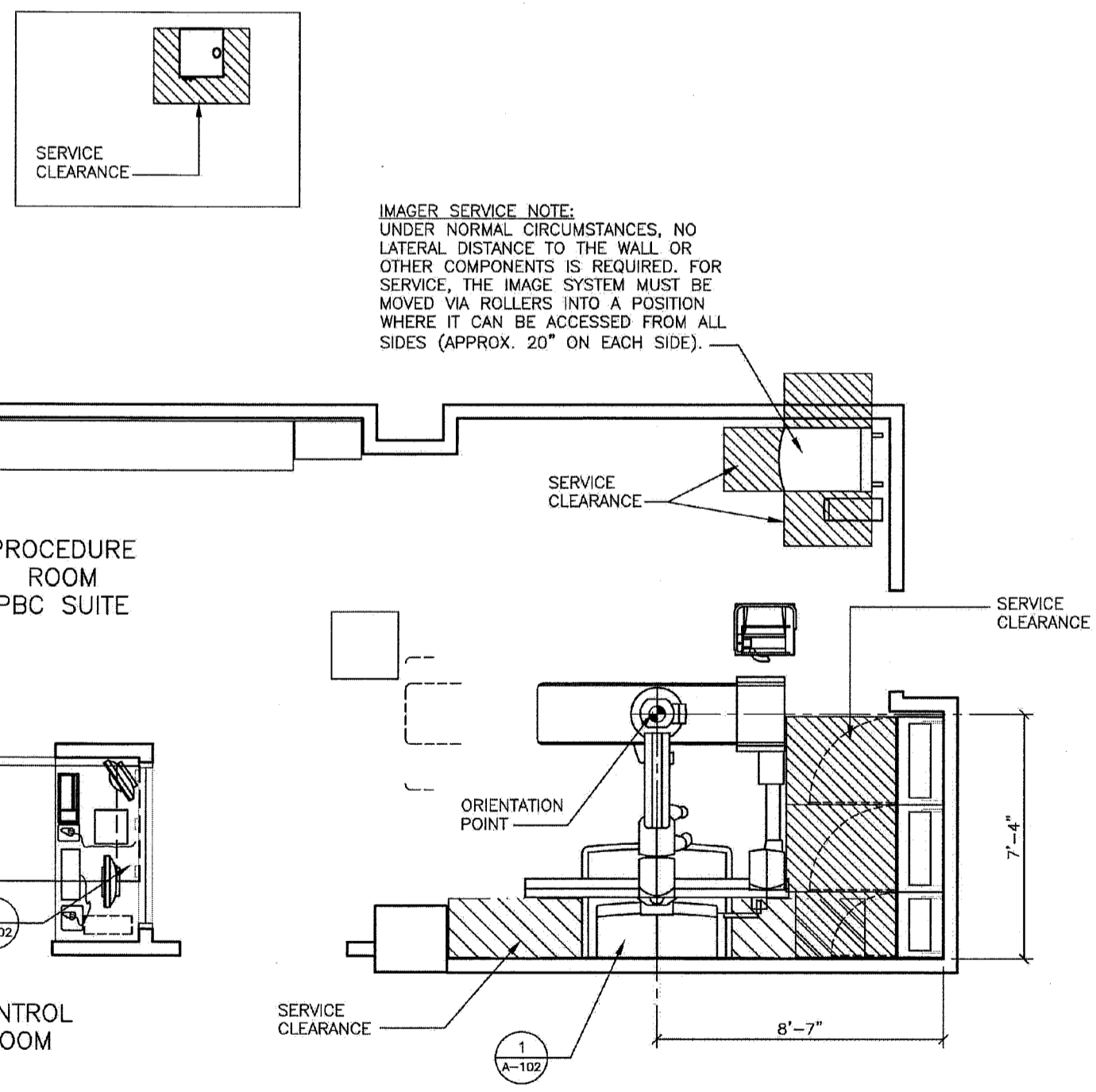
ROOM LIGHTING IS THE RESPONSIBILITY OF THE CUSTOMER. HOWEVER, SIEMENS OFFERS THE FOLLOWING RECOMMENDATIONS, AS A GENERAL GUIDE ONLY, WHEN PLANNING FOR LIGHTING.

- 1) OVERALL GENERAL ILLUMINATION IS NECESSARY FOR CLEAN UP AND MAINTENANCE OF EQUIPMENT. FLUORESCENT LIGHTING IS USUALLY PROVIDED FOR THIS PURPOSE AND SHOULD BE A MINIMUM LEVEL OF 50 FOOTCANDLES TO MINIMIZE GLARE AND PROVIDE VISUAL COMFORT. AN INDIRECT LIGHTING SYSTEM SHOULD BE CONSIDERED TOGETHER WITH COLOR IMPROVED FLUORESCENT LAMPS.
- 2) THE GENERAL LIGHTING SHOULD HAVE A MULTI-LEVEL SWITCHING CAPABILITY TO ALLOW FLEXIBILITY OF AMBIENT LIGHTING LEVELS.
- 3) BECAUSE FLUORESCOPY PROCEDURES ARE NOW PERFORMED WITH IMAGE INTENSIFICATION WITH VISUALIZATION ON A TELEVISION MONITOR, COMPLETE ROOM DARKNESS IS NO LONGER NECESSARY. HOWEVER, IN ORDER TO PERMIT PROPER READINGS OF THE MONITOR, THE ROOM LIGHTING INTENSITY MUST BE CAPABLE OF BEING LOWERED TO BETWEEN 2 TO 5 FOOTCANDLES. THIS CAN BE USUALLY ACCOMPLISHED BY MEANS OF A FOOT SWITCH.

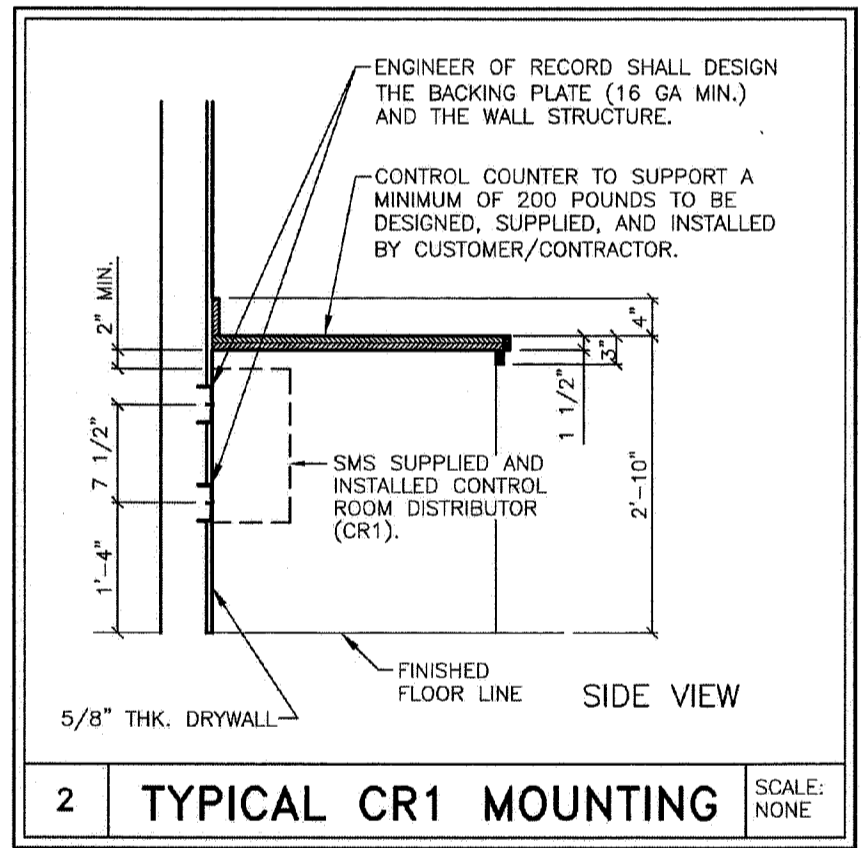
THE FOOT SWITCH CONTROL ARRANGEMENT IS SUCH THAT, WHEN OPERATED, A SEPARATE LIGHTING SYSTEM FOR FLUORESCOPY IS TURNED "ON" AND AT THE SAME TIME, THROUGH AN INTERLOCK, THE GENERAL LIGHTING SYSTEM IS TURNED "OFF". IF A VARIABLE LOW LEVEL LIGHTING INTENSITY IS DESIRED BY THE CUSTOMER, THEN A DIMMER CONTROL CAN BE ADDED. IN THIS CASE, INCANDESCENT LIGHTING IS RECOMMENDED FOR THIS PURPOSE. FLUORESCENT DIMMING IS NOT RECOMMENDED.

REFLECTED CEILING PLAN

SCALE: 1/4" = 1'-0"



IMAGER SERVICE NOTE: UNDER NORMAL CIRCUMSTANCES, NO LATERAL DISTANCE TO THE WALL OR OTHER COMPONENTS IS REQUIRED. FOR SERVICE, THE IMAGE SYSTEM MUST BE MOVED VIA ROLLERS INTO A POSITION WHERE IT CAN BE ACCESSED FROM ALL SIDES (APPROX. 20" ON EACH SIDE).



SAFETY/SERVICE CLEARANCE PLAN

SCALE: 1/4" = 1'-0"

CEILING HEIGHT RANGE	RECOMMENDED CEILING HEIGHT
9'-0 1/4" - 10'-6"	9'-6 3/8"

SYMBOL	DATE	DESCRIPTION
	01/04/12	R-10180 VERSION DATED 12/05/11 APPROVED BY CUSTOMER FOR FINALS
-ISSUE BLOCK-		

SIEMENS
MAINE MEDICAL CENTER
 22 BRAMHALL ST. PORTLAND, ME 04102
 PBC SUITE - ARTIS ZEE MULTI-PURPOSE

PROJECT #: **1102468** SHEET: **A-102**

SHEET 2 OF 8 DRAWN BY: J. PAOLUCCI

DATE: 01/04/12 CHECKED:

SCALE: AS NOTED REF: 80152323

PROJECT MANAGER: RICH DORSEY
 TEL: (207) 712-3205
 FAX: (207) 929-3776
 EMAIL: RIC.DORSEY@SIEMENS.COM

ATTENTION:

- THIS DRAWING IS DESIGNED TO CONFORM TO FEATURES AND EQUIPMENT REQUIREMENTS PRESENTED AT THE TIME OF THEIR PREPARATION. SINCE BOTH THESE FACTORS ARE SUBJECT TO DESIGN MODIFICATION, THEY ARE NOT TO BE USED FOR CONSTRUCTION PURPOSES.
 - THIS SET OF PLANS REPRESENTS A COMPLETE SET OF DETAILS AND SHOULD NOT BE SEPARATED.
 - IT IS RECOMMENDED THAT THE SIEMENS DRAWINGS BE INCORPORATED WITH THE CONSTRUCTION DOCUMENTS FOR REFERENCE.
 - ALL DIMENSIONS SHOWN ON THIS DRAWING ARE FROM FINISHED SURFACES.
 - THIS DRAWING DOES NOT PROVIDE RADIATION SHIELDING REQUIREMENTS FOR X-RAY AND ASSOCIATED EQUIPMENT. THE CUSTOMER IS RESPONSIBLE FOR CONSULTING WITH A REGISTERED RADIATION PHYSICIST TO SPECIFY RADIATION PROTECTION.

NOTE: THIS DRAWING WAS NOT PREPARED BY SMRT. IT IS PROVIDED FOR COORDINATION AND REFERENCE PURPOSES ONLY.

144 Free Street, Box 618
 Portland, Maine 04104
 Tel: (207) 772-3846
 Fax: (207) 772-1070
 www.smrtinc.com

ARCHITECTURE
 ENGINEERING
 PLANNING
 INTERIOR DESIGN
 COMMISSIONING

SMRT

PROJECT NORTH

MAINE MEDICAL CENTER
 HOLDING, RADCU & PBC RENOVATION
 PORTLAND, ME

ISSUED FOR CONSTRUCTION
 02.24.12

NO.	DATE	DESCRIPTION

GRAPHIC SCALE:
 0" 1"

SCALE: PROJECT MANAGER: KD
 I.C. DRAWN BY: KD
 A/E OF RECORD: KD
 PROJECT NO: 11063
 DATE: 2.24.12

SHEET TITLE:
VENDOR EQUIPMENT DRAWINGS SHEET 3

SHEET No. **Q-003**