

MAINE MEDICAL CENTER
 HOLDING, RADCU & PBC RENOVATION
 PORTLAND, ME

ISSUED FOR CONSTRUCTION
 02.24.12

NO.	DESCRIPTION	DATE
0	ISSUED FOR CONSTRUCTION	2.24.12
1	REV	

GRAPHIC SCALE:
 0" 1"

SCALE: As indicated

PROJECT MANAGER: DN
 DRAWN BY: KTB
 A/E OF RECORD: JPD
 PROJECT NO: 11063
 DATE: 2.24.12

SHEET TITLE:
**BASEMENT LEVEL
 LIGHTING PLAN**

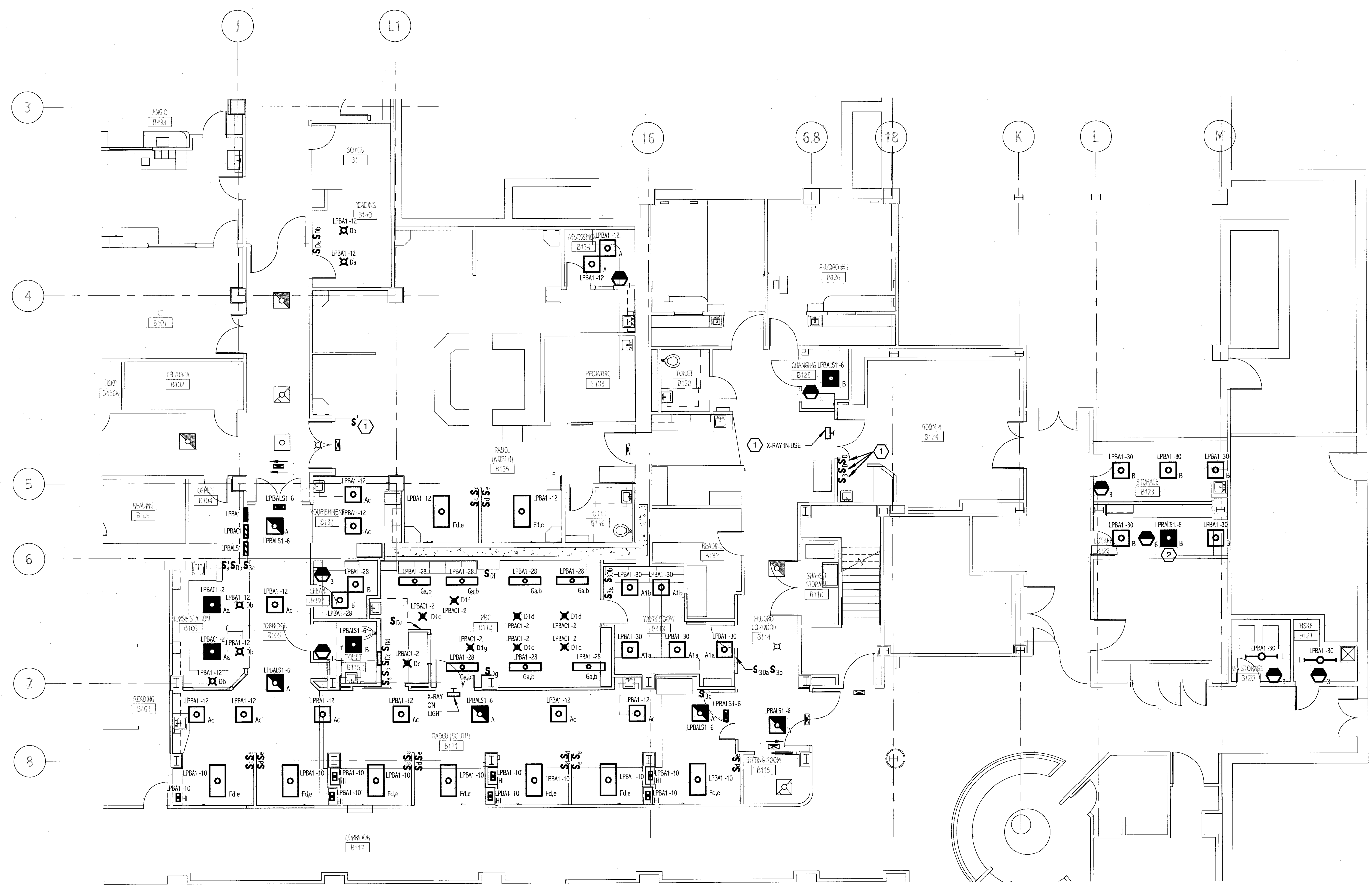
SHEET No.
EL101

NOTE:

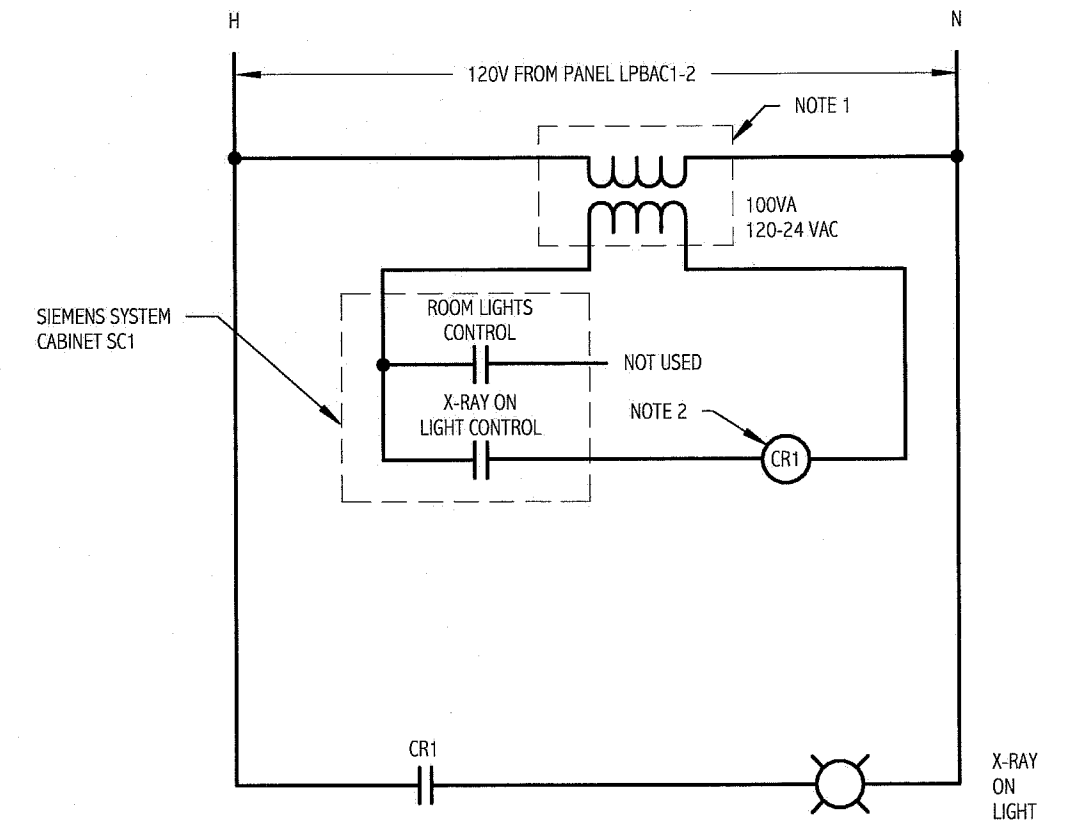
1. SEE E-001 FOR LEGEND, ABBREVIATIONS AND GENERAL NOTES.

KEYED NOTES:

- ① RELOCATED, SEE E0102 FOR THE EXISTING LOCATION.
- ② PROVIDE A UL524 CONTROL UNIT TO PROVIDE EMERGENCY POWER TO LIGHT FIXTURE. BOONE MODEL BLD-208 OR APPROVED EQUAL.



① **BASEMENT LEVEL LIGHTING PLAN**
 1/8" = 1'-0"



- 1. PROVIDE A 100VA, SQUARE D TYPE TFF100-D23 CONTROL TRANSFORMER WITH PRIMARY AND SECONDARY FUSES IN A NEMA 1 ENCLOSURE. SQUARE D PART #L51.
- 2. PROVIDE CONTROL RELAY. ALLEN-BRADLEY PART #700-N201-A24 IN NEMA 1 ENCLOSURE.

② **PBC X-RAY ON LIGHT/ROOM LIGHTING CONTROL SCHEMATIC**
 NONE