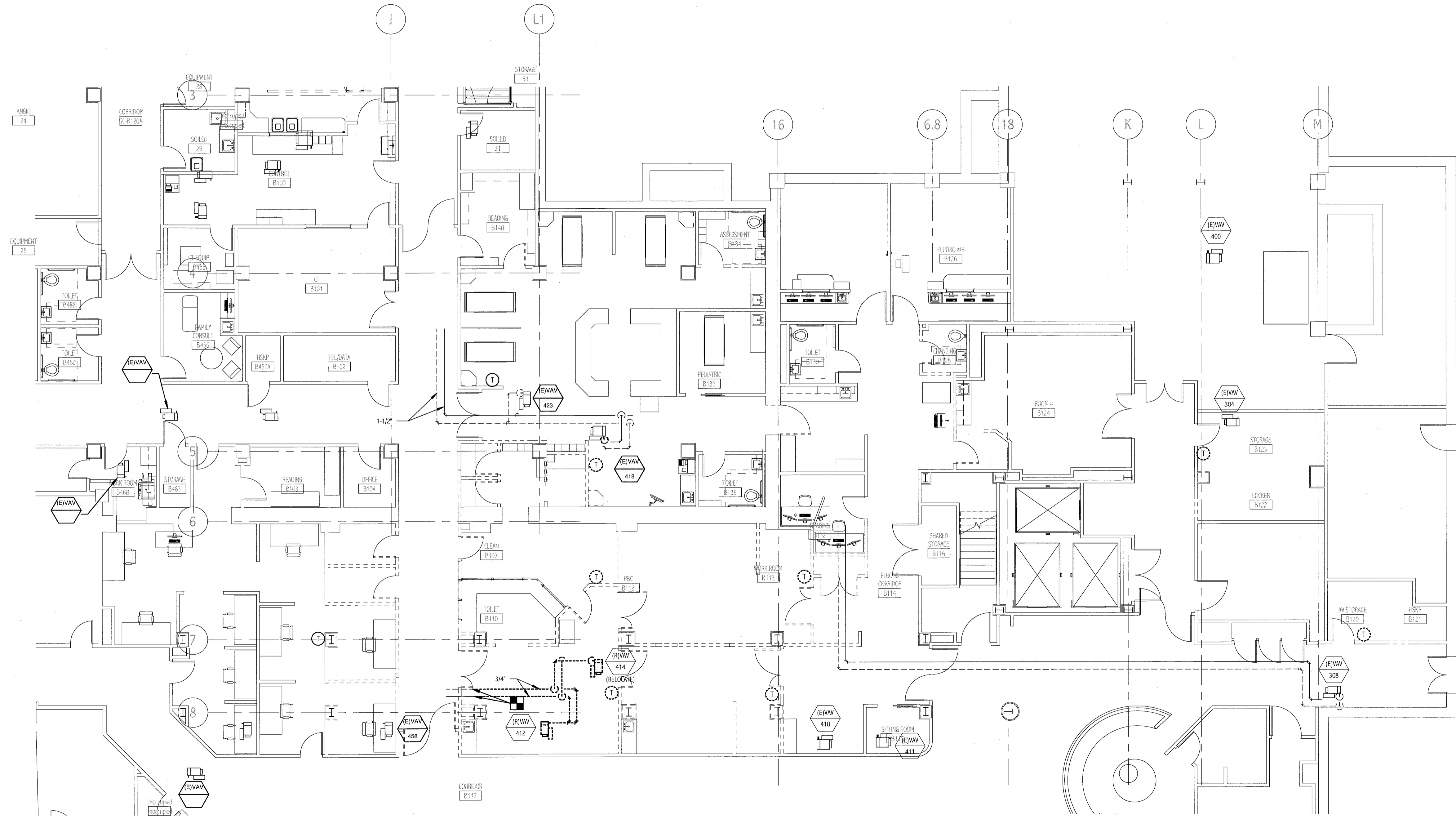


NOTE:

1. SEE M-001 FOR LEGEND, ABBREVIATIONS AND GENERAL NOTES.

KEYED NOTES:

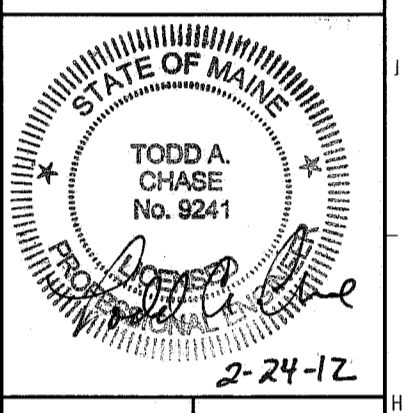
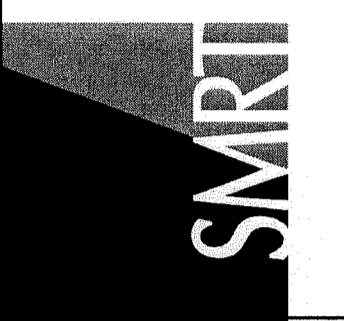
- ① REMOVE EXISTING LAVATORY AND ASSOCIATED WASTE & VENT PIPING. CAP ABOVE CEILING OR AT FLOOR AS REQUIRED.
- ② REMOVE EXISTING WATER CLOSET AND ASSOCIATED SAN. & VENT PIPING. CAP ABOVE CEILING OR AT FLOOR AS REQUIRED.



BASEMENT LEVEL PIPING DEMOLITION PLAN
 ① 1/8" = 1'-0"

144 Fore Street P.O. Box 618
 Portland, Maine 04104
 Tel: (207) 772-2646
 Fax: (207) 772-1070
 www.smrtinc.com

ARCHITECTURE
 ENGINEERING
 PLANNING
 INTERIOR DESIGN
 COMMISSIONING



MAINE MEDICAL CENTER
 HOLDING, RADCU & PBC RENOVATION
 PORTLAND, ME
ISSUED FOR CONSTRUCTION
 02.24.12
 CURRENT ISSUE STATUS:

NO.	REVISION DESCRIPTION	DATE
0	ISSUED FOR CONSTRUCTION	2.24.12

GRAPHIC SCALE:
 0" 1"
 SCALE: 1/8" = 1'-0"
 PROJECT MANAGER: DW
 JC/DRAWN BY: BAL
 A/E OF RECORD: TAC
 PROJECT NO.: 11063
 DATE: 02.24.12

SHEET TITLE:
BASEMENT LEVEL HVAC PIPING DEMO PLAN

SHEET No. **MD102**