

2/24/12

MAINE MEDICAL CENTER
 HOLDING, RADCU & PBC RENOVATION
 PORTLAND, ME
 ISSUED FOR CONSTRUCTION
 02.24.12
 CURRENT ISSUE STATUS

NO.	DATE	DESCRIPTION
0	REV	
1	ISSUED FOR CONSTRUCTION	
2	2.24.12	

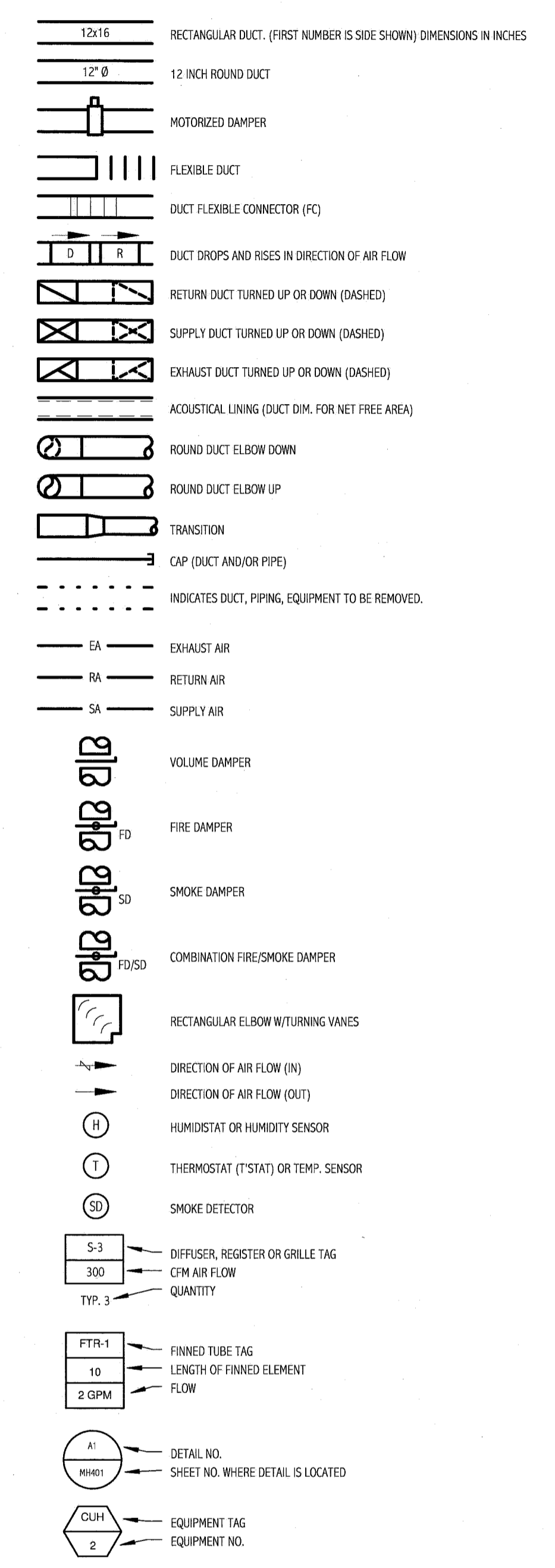
GRAPHIC SCALE:
 0" 1"

SCALE: NOT TO SCALE
 PROJECT MANAGER: DW
 DRAWN BY: BAL
 A/E OF RECORD: TAC
 PROJECT NO: 11063
 DATE: 02.24.12

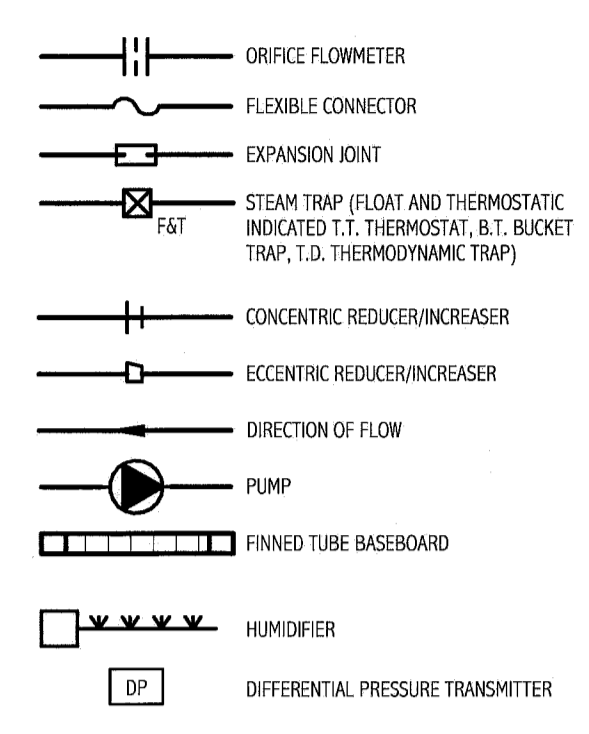
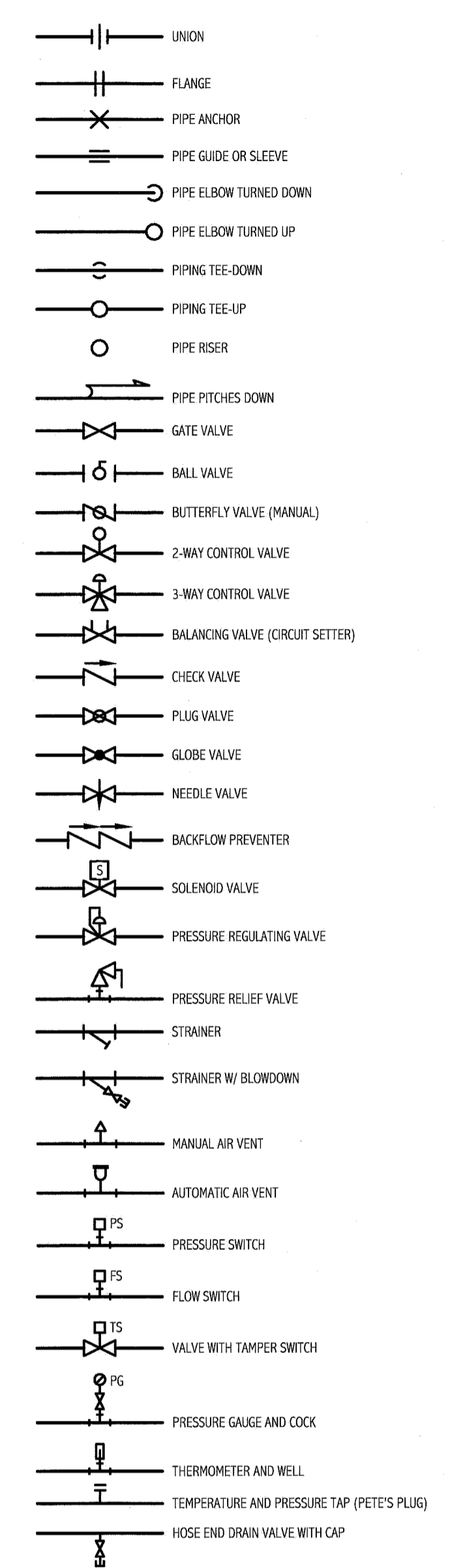
SHEET TITLE:
LEGEND AND ABBREVIATIONS

SHEET No.
M-001
 © COPYRIGHT 2008 SMART INC.

AIR DISTRIBUTION SYMBOLS



PIPING SYMBOLS



ABBREVIATIONS

AAV AUTOMATIC AIR VENT	ENC ENCLOSURE	PSE PROCESS SOLVENT EXHAUST
ACC AIR COOLED CONDENSER	ER EXHAUST REGISTER	PP POLYPROPYLENE
ACU AIR CONDITIONING UNIT	(E) EXISTING	PPE PREPURCHASED EQUIPMENT
ADA ACCESS DOOR	EXIST. EXISTING	PRS PRESSURE REDUCING STATION
AE ACID EXHAUST	FBO FURNISHED BY OWNER	PRV PRESSURE REDUCING VALVE
AFF ABOVE FINISHED FLOOR	FBP FACE AND BYPASS	PVD PNEUMATIC VOLUME DAMPER
AFMS AIR FLOW MEASURING STATION	FC FLEXIBLE CONNECTOR	(R) REMOVE
AHU AIR HANDLING UNIT	FD FIRE DAMPER	RA RETURN AIR
ATC AUTOMATIC TEMPERATURE CONTROL	FG FIBERGLASS	(REL) RELOCATED
AV AIR VENT	F&T FLOAT AND THERMOSTATIC	RF RETURN FAN
BB BASEBOARD	FO FLAT OVAL	RG RETURN GRILLE
BDD BACKDRAFT DAMPER	FTR FINNED TUBE RADIATION	RHC REHEAT COIL
BG BLAST GATE	FS FLOW SWITCH	RMD ROOM
BLDG BUILDING	GC GENERAL CONTRACTOR	RR RETURN REGISTER
BOD BOTTOM OF DUCT	GPM GALLONS PER MINUTE	RV RELIEF VALVE
BOP BOTTOM OF PIPE	H HUMIDIFIER	SA SUPPLY AIR
BTU BRITISH THERMAL UNIT	HB HOSE BIBB	SCV SELF CONTAINED VALVE
CBQ COUNTER BALANCED DAMPER	HRU HEAT RECOVERY UNIT	SD SMOKE DETECTOR
CD CEILING DIFFUSER	HTR HEATER	SF SUPPLY FAN
CFP CAPPED FOR FUTURE	H & V HEATING AND VENTILATING	SG SUPPLY GRILLE
CFM CUBIC FEET PER MINUTE	HVAC HEATING, VENTILATING AND AIR CONDITIONING	SR SUPPLY REGISTER
CLG CEILING	HHW HOT WATER	SS STAINLESS STEEL
CONT CONTINUATION	HX HEAT EXCHANGER	TE TEMPERATURE ELEMENT (SENSOR)
COORD COORDINATION	IN WG INCHES WATER GAUGE	TG TRANSFER GRILLE
CT COOLING TOWER	MAU MAKEUP AIR UNIT	TOD TOP OF DUCT
CTE CONNECT TO EXISTING	MAX MAXIMUM	TOP TOP OF PIPE
CU COPPER	MBH 1000 BTU/HR	TIS TIGHT TO STEEL
CUH CABINET UNIT HEATER	MD MOTORIZED DAMPER	TV TURNING VANE(S)
CV CONTROL VALVE	MEM MECHANICAL ENGINEER	TYP TYPICAL
CWC COLD WATER	MFR MANUFACTURER	UH UNIT HEATER
DC DOUBLE CONTAINED	MIN MINIMUM	UC UP IN CHASE
DDC DIRECT DIGITAL CONTROL	MPV MULTI-PURPOSE VALVE	UW UP IN WALL
DIA DIAMETER	MTD MOUNTED	UV UNIT VENTILATOR
DIC DOWN IN CHASE	MUA MAKEUP AIR	VAV VARIABLE AIR VOLUME BOX
DIW DOWN IN WALL	NPW NON-POTABLE WATER	VB VACUUM BREAKER
DND DOWN	NTS NOT TO SCALE	VCF VALVED AND CAPPED FOR FUTURE
DT DROP AND TRANSITION	OA OUTSIDE AIR	VD MANUAL VOLUME DAMPER
DWG DRAWING	ORB OPPOSED BLADE DAMPER	VFD VARIABLE FREQUENCY DRIVE
DWH DOMESTIC WATER HEATER	OED OPEN ENDED DUCT	VOC VOLATILE ORGANIC COMPOUND
EA EXHAUST AIR	PAE PROCESS ACID EXHAUST	VTR VENT THROUGH ROOF
EF EXHAUST FAN	PHE PROCESS HEAT EXHAUST	W WITH

PIPING SYSTEMS

CD CONDENSATE DRAIN	HG HOT GAS	RL REFRIGERANT LIQUID
CHWS CHILLED WATER SUPPLY	HPS HIGH PRESSURE STEAM	RS REFRIGERANT SUCTION
CHWR CHILLED WATER RETURN	HPCR HIGH PRESSURE CONDENSATE RETURN	TWS TEMPERED CHILLED WATER SUPPLY
CWS CONDENSER WATER SUPPLY	HWS HOT WATER SUPPLY	TWR TEMPERED CHILLED WATER RETURN
CWR CONDENSER WATER RETURN	HWRT HOT WATER RETURN	ZB ZONE VALVE BOX
DB DISTRIBUTION VALVE BOX	LPS LOW PRESSURE STEAM	
FCS FREE COOLING SUPPLY	LPR LOW PRESSURE RETURN	
FCR FREE COOLING RETURN	MPS MEDIUM PRESSURE STEAM	
FOS FUEL OIL SUPPLY	MPR MEDIUM PRESSURE RETURN	
FOR FUEL OIL RETURN	NPW NON-POTABLE COLD WATER	
FOV FUEL OIL VENT	PCWV PROCESS COOLING WATER RETURN	
GCR GRAVITY STEAM CONDENSATE RETURN	PC PUMPED STEAM CONDENSATE	
GLY GLYCOL	PD PUMPED DISCHARGE	
HCR HOT/CHILLED WATER RETURN	PW POTABLE WATER	
HCS HOT/CHILLED WATER SUPPLY	R RELIEF LINE	

GENERAL NOTE:

1. ALL GENERAL NOTES, SYMBOL LISTS, AND DETAILS ARE TO BE CONSIDERED AS APPLICABLE TO ALL MECHANICAL DRAWINGS FOR THIS PROJECT. SYMBOLS AND ABBREVIATIONS SHOWN ON THIS SHEET ARE FOR REFERENCE ONLY AND DO NOT INDICATE THEIR INCORPORATION INTO THE DESIGN.