

- Legend**
- ■ ■ ■ ■ Temporary Containment Partition
  - SLF Save Light Fixtures In This Room For Reuse
  - ⋯ Limit of Existing Accessible Ceiling Area

Richards Wing  
First Floor

Renovations

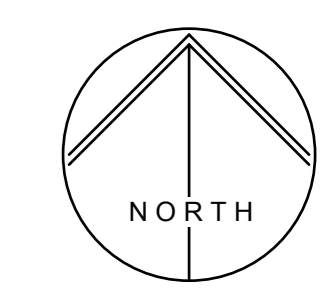
Maine Medical Center  
Portland, Maine 04102

Architect  
Winton Scott Architects

Portland, Maine  
04101

Phasing Plan  
**A 1.1**

Scale: 1/8" = 1' - 0"  
October 12, 2007



**Ceiling Types**

- (A) 2 x 2 ACT. Tegular Edge Lay-In "Cirrus #589" by Armstrong. Provide 9/16" Suspension Grid System. Install at 8'-0" AFF Unless Otherwise Noted.
- (B) Existing Ceiling. Open And Close As Required. Provide Pendant Heads.
- (C) Existing Ceiling To Remain Undisturbed. Sprinkler Piping To Be Sidewall Heads With Valence Cover System
- (D) Existing Ceiling And Sprinklers To Be Removed. Provide 2 X 4 Act Square Edge Lay-In "Fine Fissured Humiguard #1729" By Armstrong. Provide 15/16" Suspension Grid System.

**Lighting Fixture Schedule**

Mfr	Type	Model No.	Mounting	Lamping	Remarks
A	Lightolier Typical Corridor Ceiling Luminaire	QVS 2 G PF OS 2 FT 120 SB	Recessed	(2) 40W TT5	Typical Unless Noted Otherwise. Wire to existing lighting circuits / Verify continuity / See switching diagram for 24 Hour fixtures
B	Existing	Existing	Recessed	Existing	Remove & Replace Existing Fluorescent Light Fixture
C	Existing	Existing	Surface	Existing	Remove & Replace Existing Fluorescent Light Fixture
D	Lightolier	1 x 4 Troffer	SPS1GFSVA232 120 SO	Recessed	(2) 40W TT5

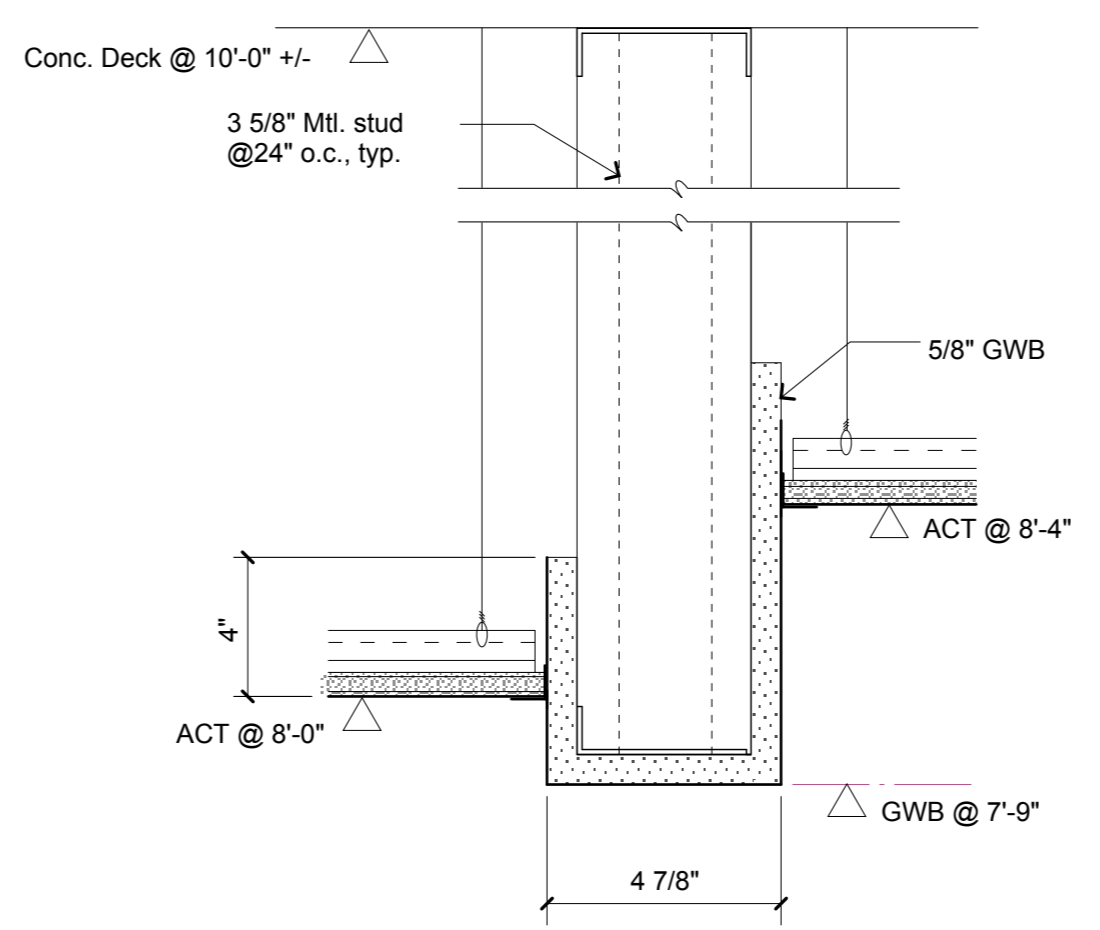
Note  
 EP Wire fixture shown to existing emergency power lighting circuit

**Notes**

1. Sprinkler heads shown shall be provided under separate contract to the Owner. Coordinate work with this contractor.

**Legend**

- Sprinkler Head (By Separate Contract)
- ☒ Provide Supply Air Grille
- ☑ Provide Return or Exhaust Air Grille
- (P) Paging System Speaker
- ☐ Recessed Fluorescent Light Fixture
- ☐ Recessed Fluorescent Light Fixture
- ☐ Wireless Network Access Device (Removal and Replacement by Owner)
- ⊙ Exit Sign - Remove and reinstall existing unit
- ⊙ Telemetry Antenna - Remove and reinstall existing unit
- ⊙ Smoke Detector - Remove and reinstall existing unit
- AP Nurse Call Annunciator- Remove and reinstall existing unit
- ⋯ Limit of Existing Accessible Ceiling Area
- (RS) Existing Sprinkler Heads and Piping In This Room To Be Removed



1 NURSING STATION SOFFIT DETAIL  
 3" = 1'-0"

**Richards Wing  
 First Floor**

Renovations

Maine Medical Center  
 Portland, Maine 04102

Architect

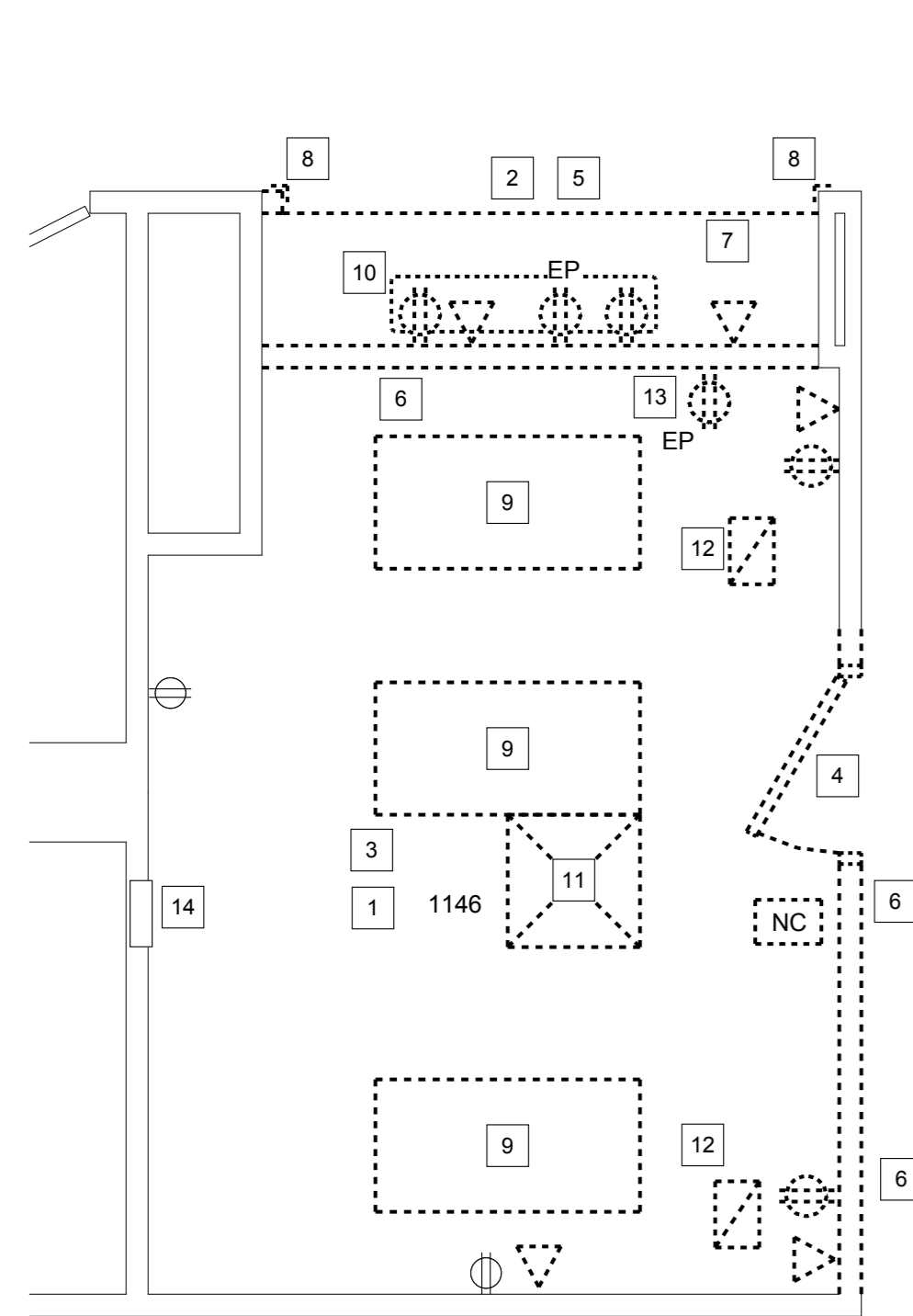
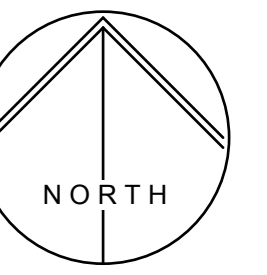
Winton Scott Architects

Portland, Maine  
 04101

**Reflected Ceiling Plan**

**A 2.1**

Scale: 1/8" = 1' - 0"  
 October 12, 2007



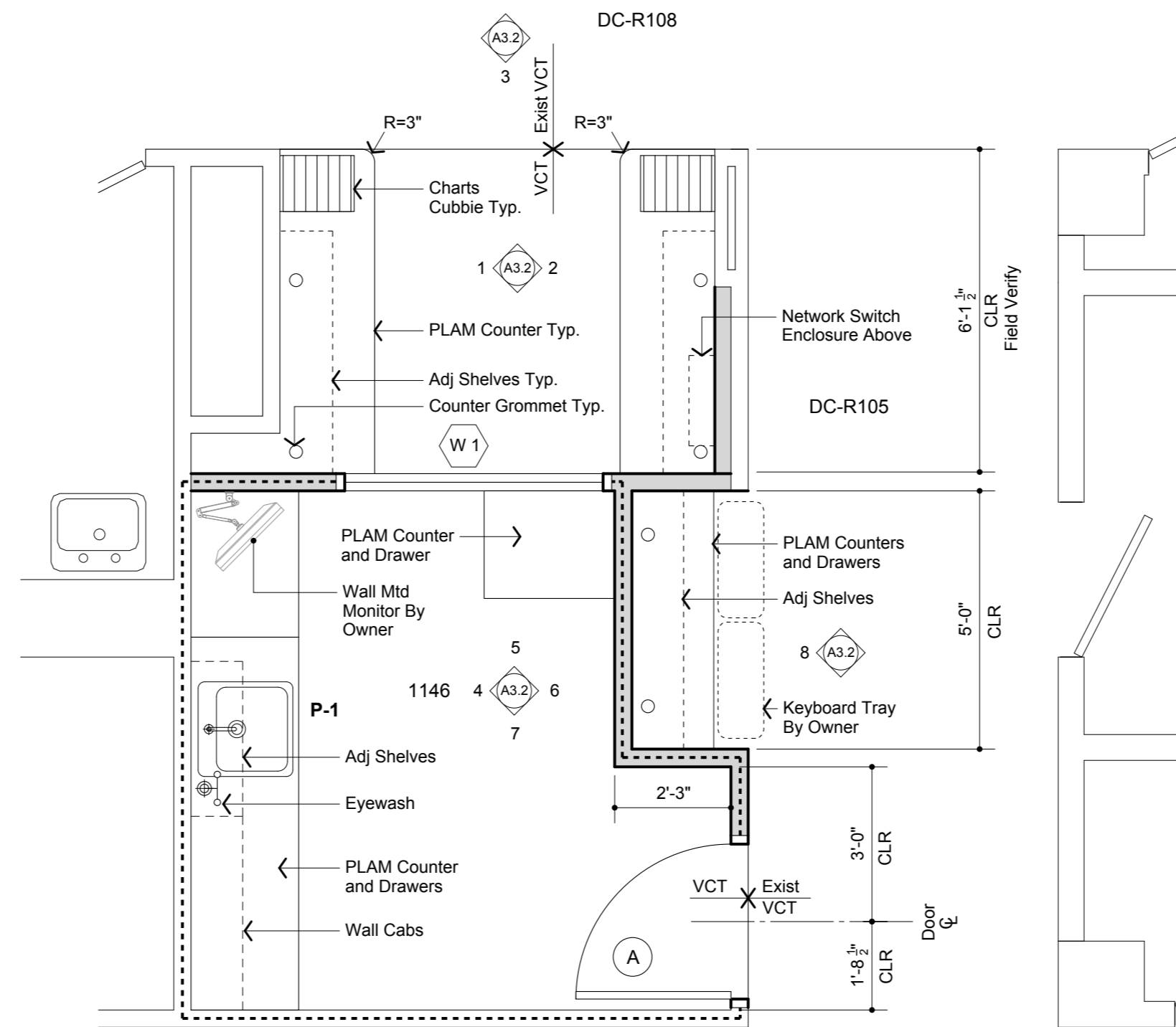
Removals Plan

Removals Symbols

- Remove existing power outlet.
- Remove emergency power outlet.
- Remove existing voice or data outlet.
- Existing power outlet to remain.
- Remove existing nurse call station. Save for reuse.

Removals Notes

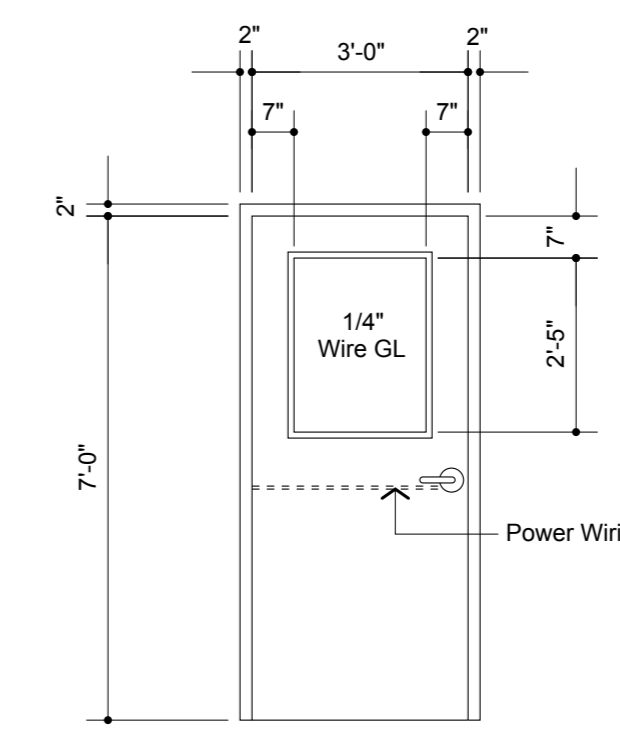
- 1 Remove existing carpet and vinyl base in this room. Prepare slab for proposed floor finish.
- 2 Remove existing VCT and vinyl base in this area. Prepare slab for proposed floor finish.
- 3 Remove ACT ceiling in this room.
- 4 Remove door and frame.
- 5 Remove existing GWB soffit in this area.
- 6 Remove metal stud drywall partition. Patch floor and adjacent walls to match existing.
- 7 Remove existing counter and charts cubbies.
- 8 Remove existing corner guard.
- 9 Remove existing light fixture and switching, save light for reuse.
- 10 Remove existing light fixture and switching.
- 11 Remove existing supply air grille. Verify existing air flow CFM and report to Architect.
- 12 Remove existing return air grille. Verify existing air flow CFM and report to Architect.
- 13 Remove existing conduit bushing at data cables. Do not disturb cables.
- 14 Existing abandoned NC backbox to remain. Verify cabling proximity to proposed sink.



Floor Plan

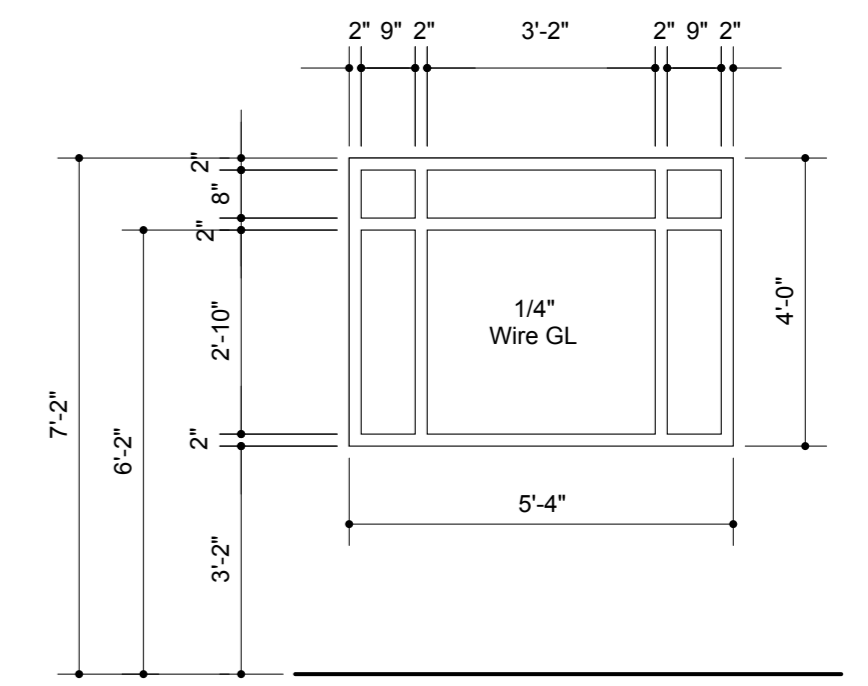
Legend

- Partition or item to be removed.
- Existing partition or item to remain.
- Extend Existing Partition To Underside of Slab Above 5/8" FR GWB Each Side
- Proposed Partition 3 5/8 25 ga. Mtl. Studs 16" O.C. 5/8" GWB Each Side
- Proposed Partition One Hour Fire Rated 3 5/8 25 ga. Mtl. Studs 16" O.C. 5/8" GWB Each Side Extend To Underside of Slab Above



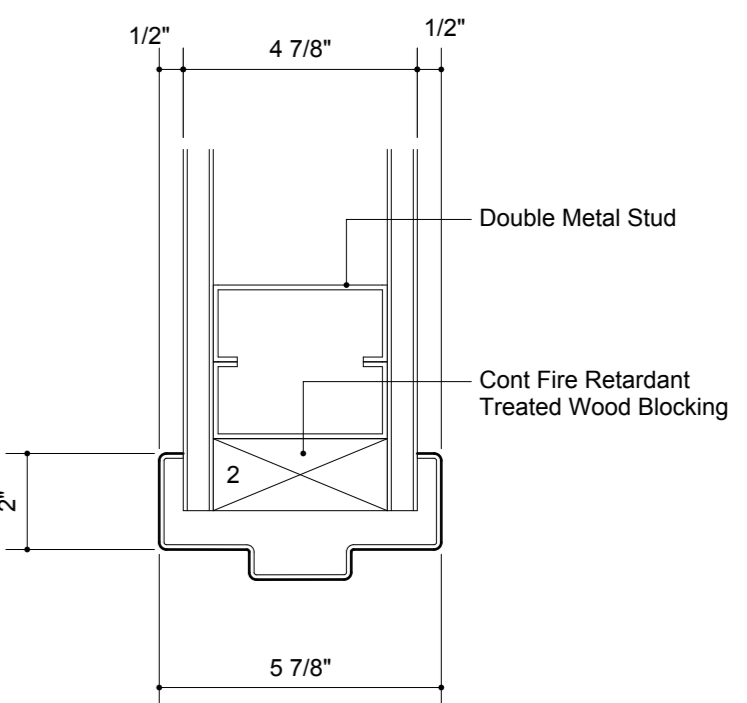
Door A

- 3'-0" x 7'-0" x 1 3/4"
  - Quarter Sawn White Oak Slip Matched
  - 20 Minute Fire Rated
  - Preff and Prefinished
  - Provide Stain Samples To Architect
  - Lifetime Warranty
  - Painted Welded Hollow Metal Frame
  - Closer LCN 4041
  - Wall Stop
  - US 26D Finish
- Furnished By Security System Contractor:
- Sargent 10 Line Electromechanical Leverset
  - McKinney Hinges
  - Door Frame Contact Switch
  - Card Reader



Borrowed Lite W1

- Painted Welded Hollow Metal Frame
- 3/4 Hour Fire Rated

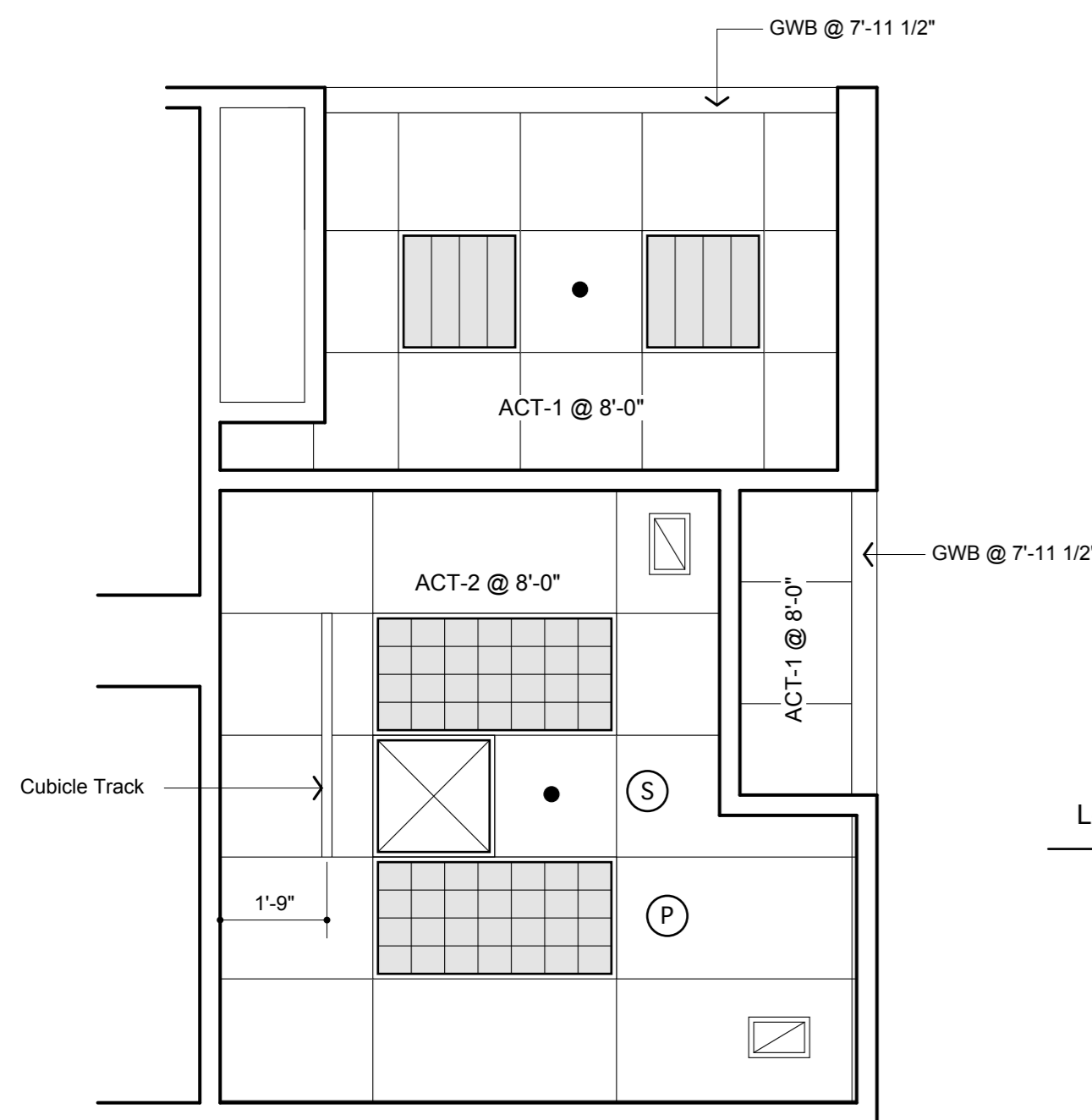


J1 H1 Typical Door/Window Detail

3" = 1'-0"

Plumbing Fixture P - 1

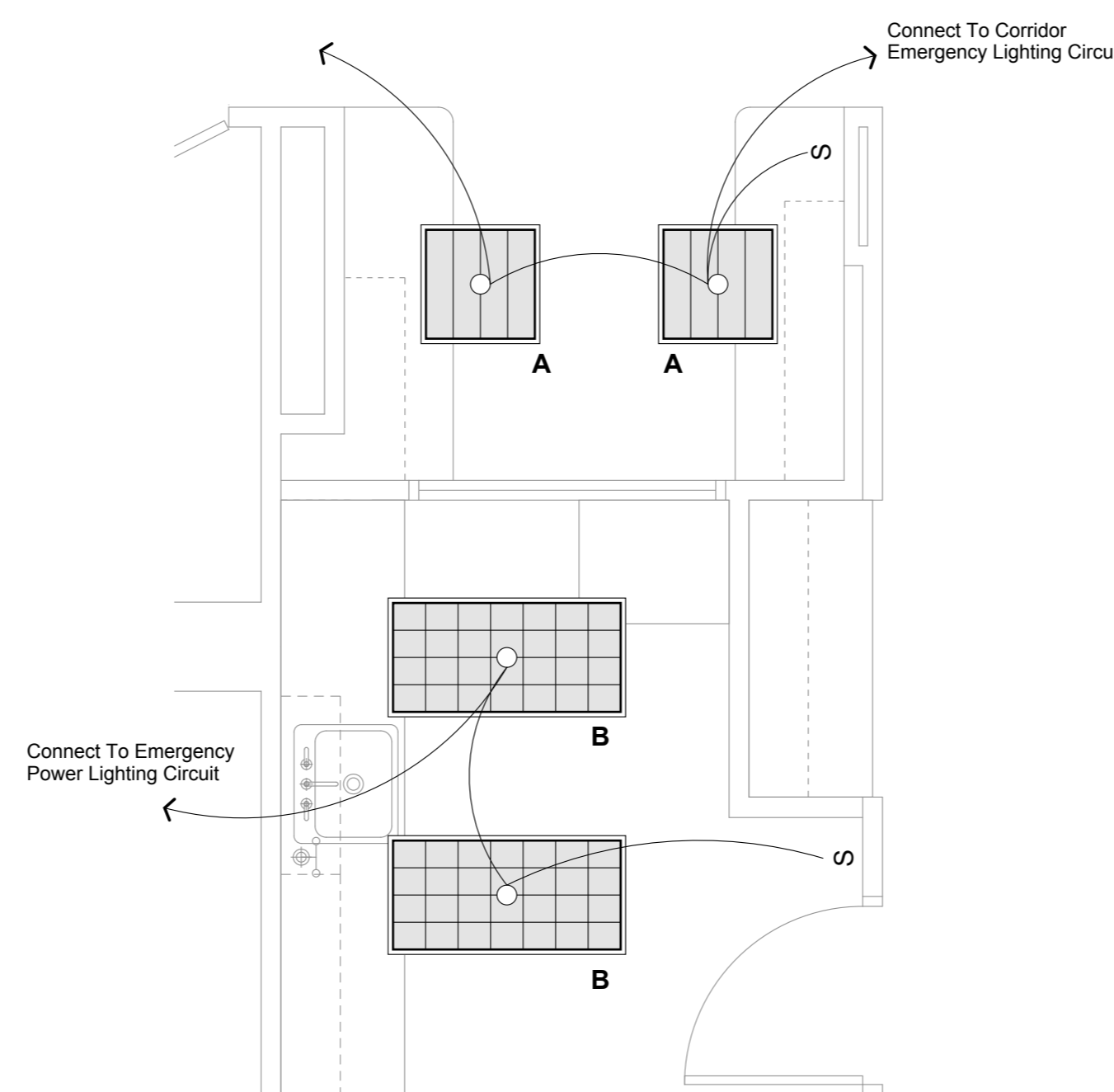
- Sink: Elkay LRAD 2222 / 5 1/2" D / Single Hole
- Faucet: Chicago Faucets 116.103.21.1 Sensor Operated Electronic Gooseneck With 8" Cover Plate and 12 V Transformer
- Eyewash: Guardian G5022 Eyewash/Drench Hose Unit, Deck Mounted
- Mixing Valve: Emergency Mixing Valve: Leonard Model TA-300-STL-EXP-VIEW Thermostatic Mixing Valve In Stainless Steel Cabinet With Cylinder Lock.
- Flow Switch: Modonell & Miller General Purpose Liquid Flow Switch, 1/2", 120 Vac, Adjustable Sensitivity, UL Listed, Wired To provide Power To Faucet Transformer When There Is No Flow To Eye Wash.



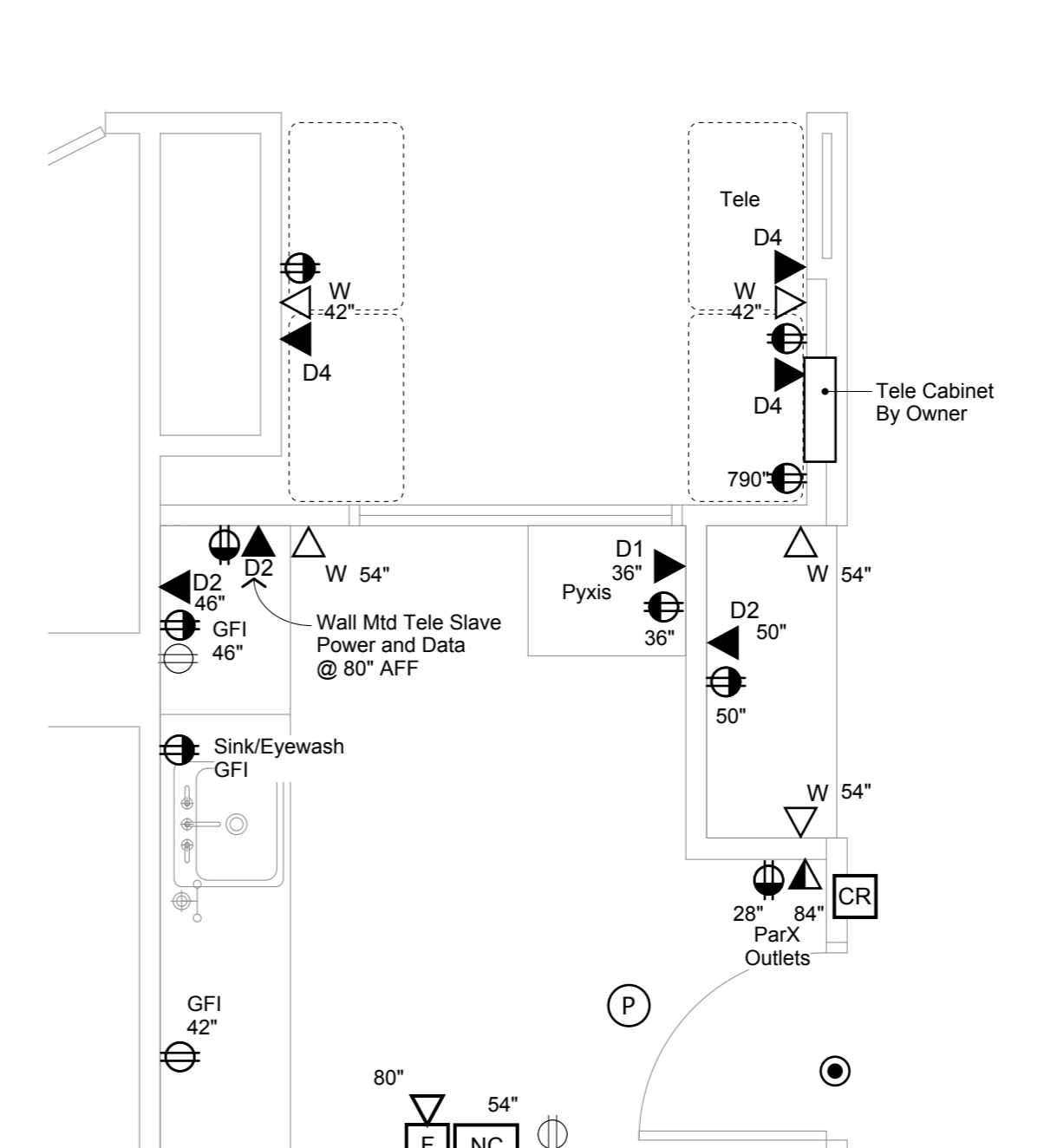
Reflected Ceiling Plan

Legend

- Sprinkler Head (By Separate Contract)
- Provide Supply Air Grille Report Air Flow CFM To Architect
- Provide Return Air Grille Report Air Flow CFM To Architect
- Paging System Speaker
- Smoke Detector
- Recessed Fluorescent Light Fixture
- Cubicle Track - ADC Model 110-C Include End Caps and Suspension From Underside of Conc Slab Above



Electrical Lighting Plan



Electrical Power and Systems

Legend

- Duplex Outlet @ 18" Aff Unless Otherwise Shown
- Existing Duplex Outlet @ 18" Aff
- Emergency Power Duplex Outlet @ 18" Aff Unless Otherwise Shown
- Voice / Data Outlet @ 18" Aff
- Wall Phone Outlet @ Height Shown
- Data Outlet With Quantity Shown @ 18" Aff
- Nurse Call Staff Station. Provide Recessed Backbox.
- Paging Speaker
- Horn / Strobe Unit
- Card Reader By Security System Contractor- Provide Conduit Riser To Ceiling Space
- Door Position Switch

Lighting Fixture Schedule

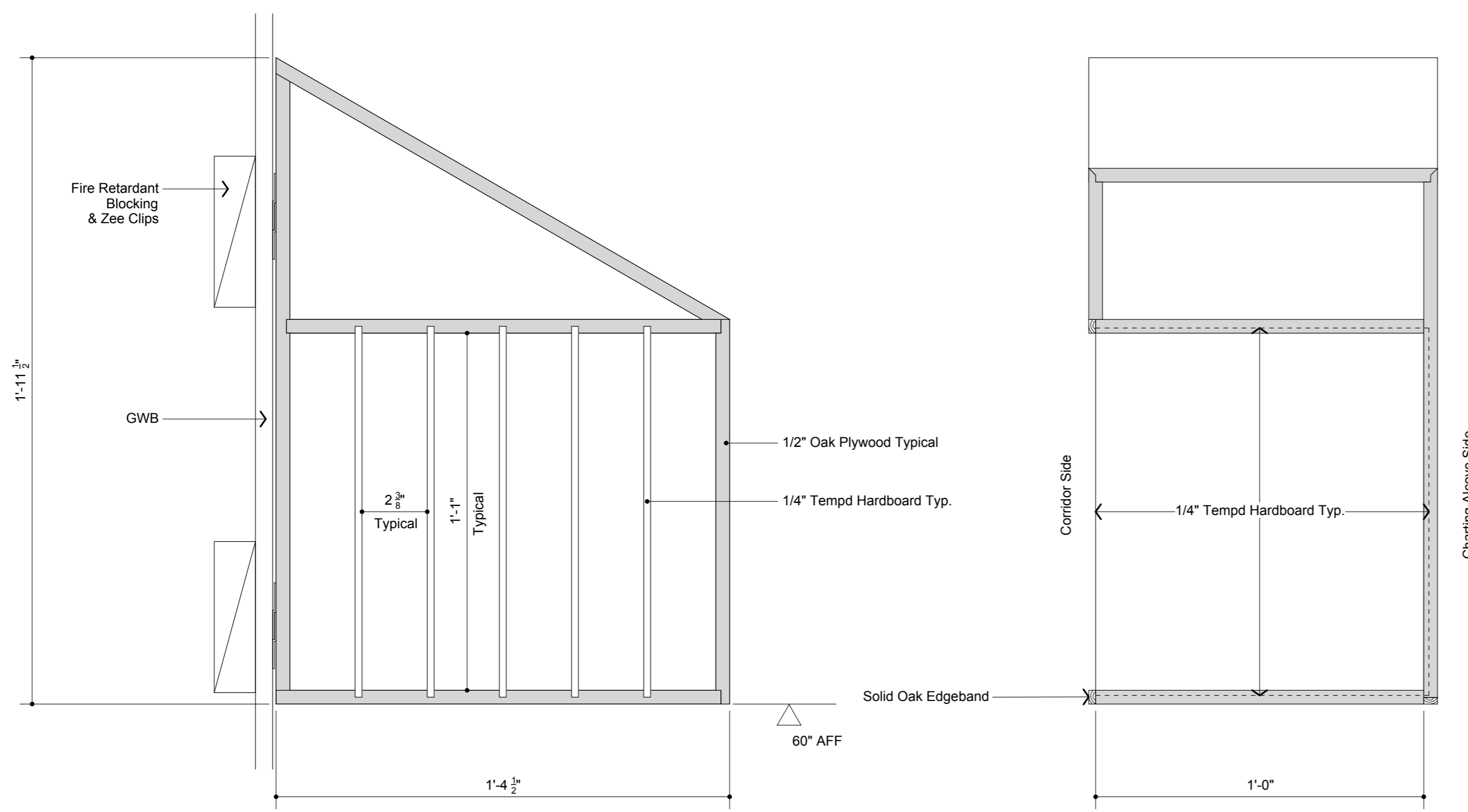
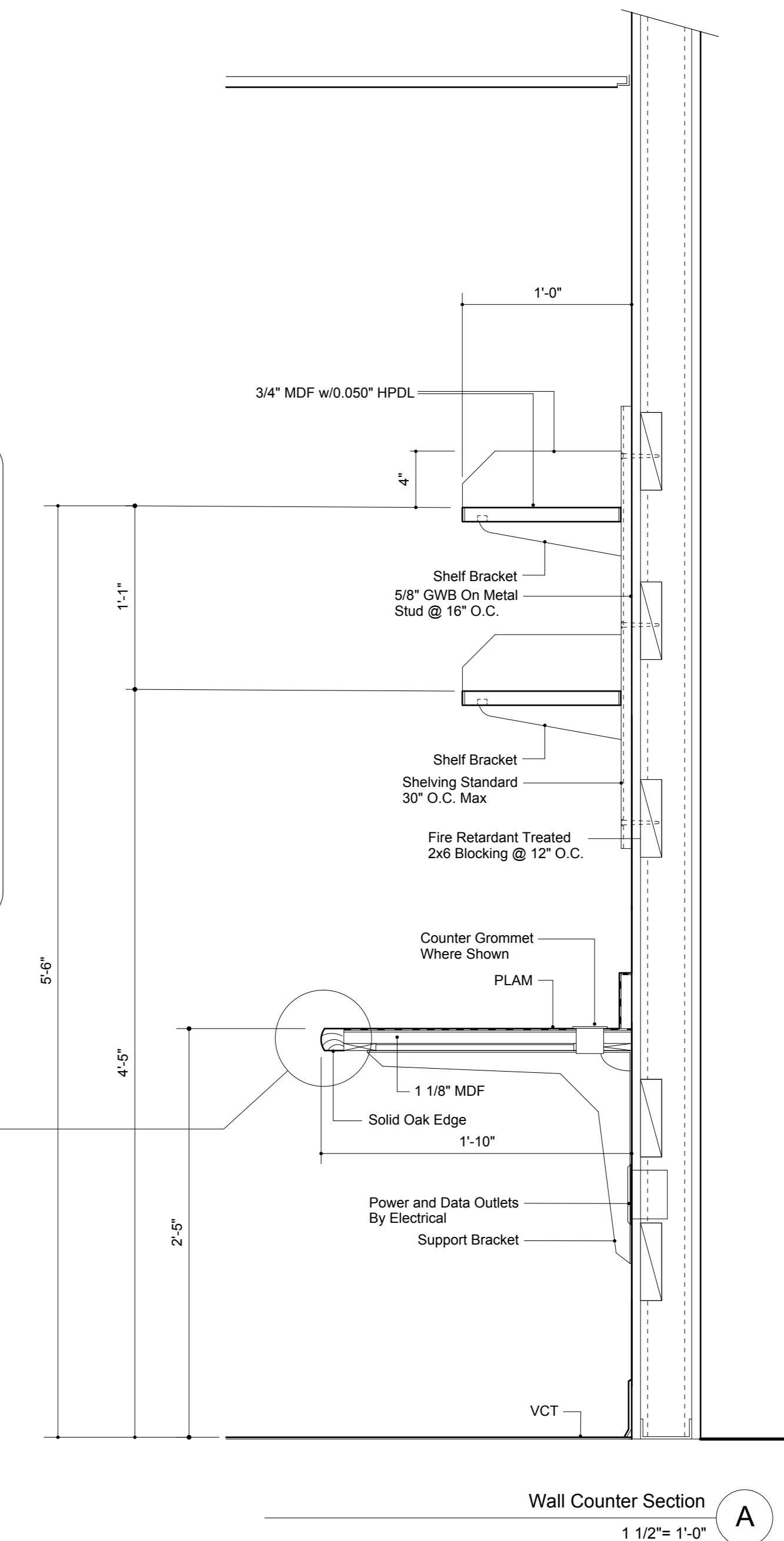
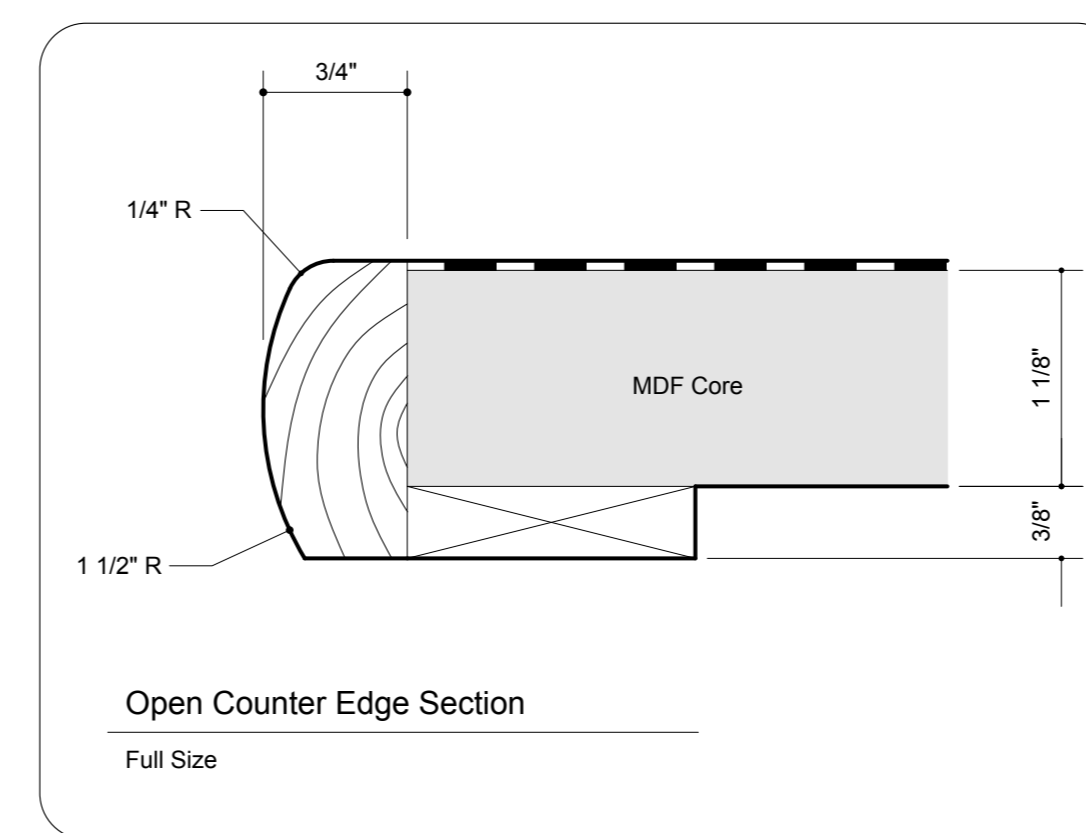
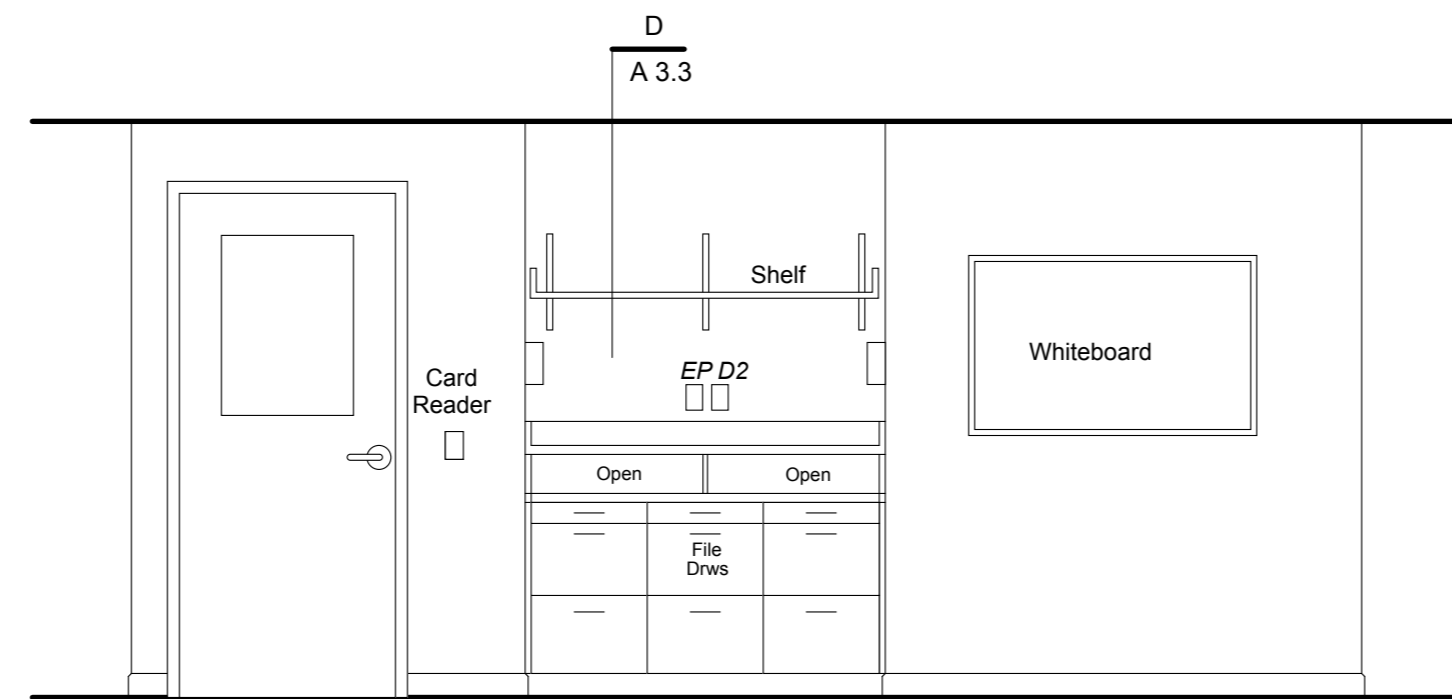
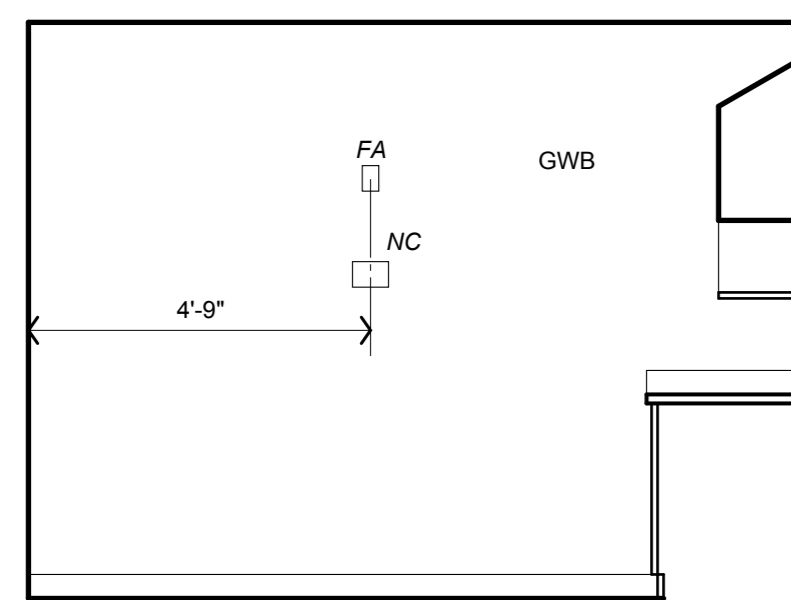
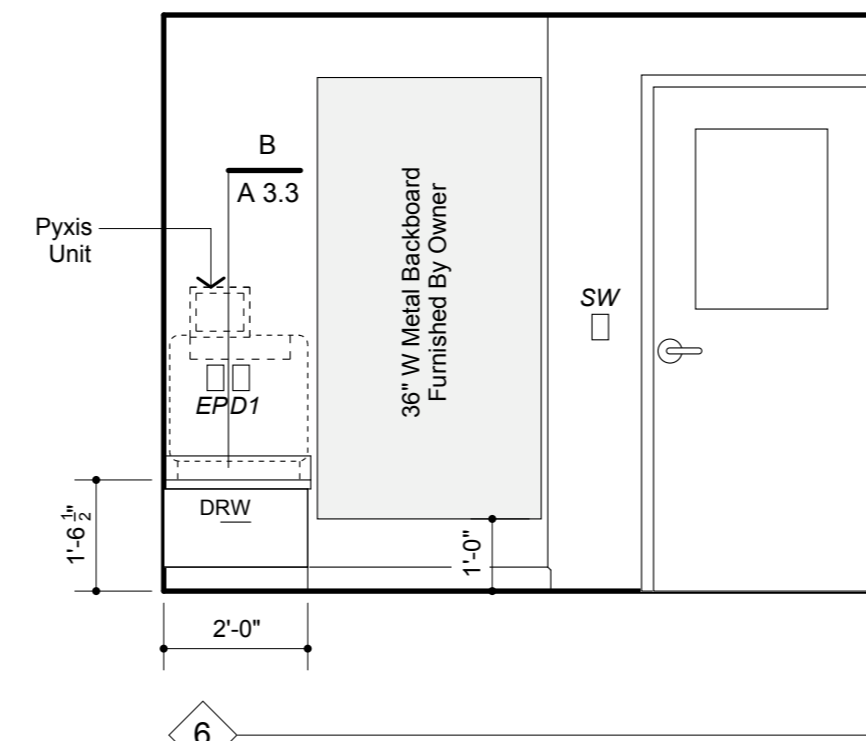
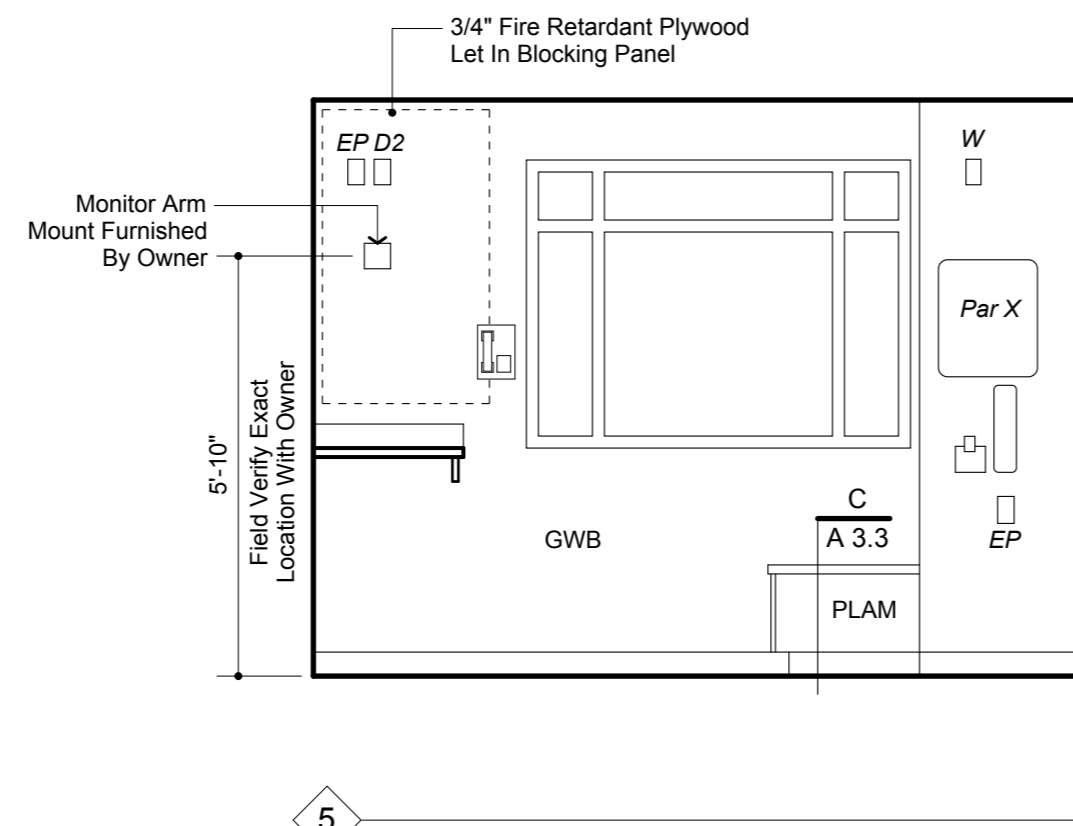
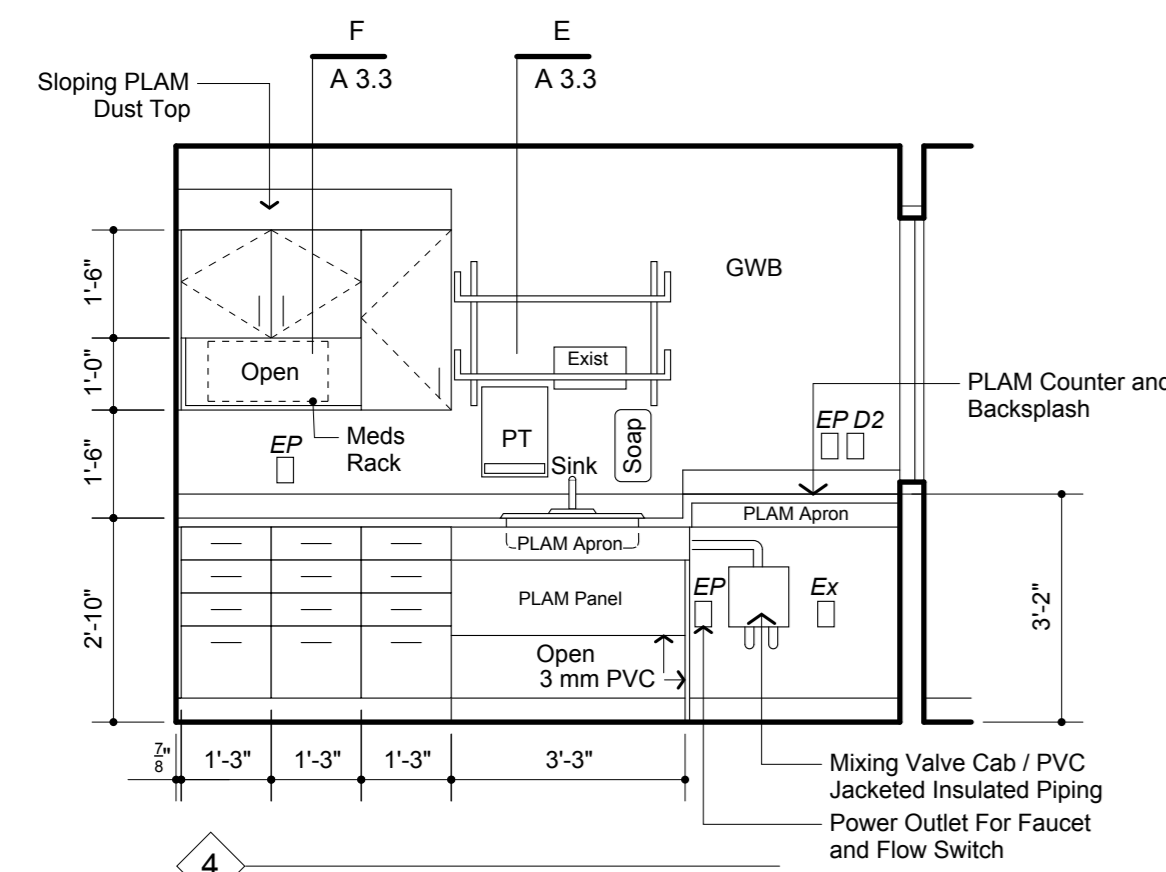
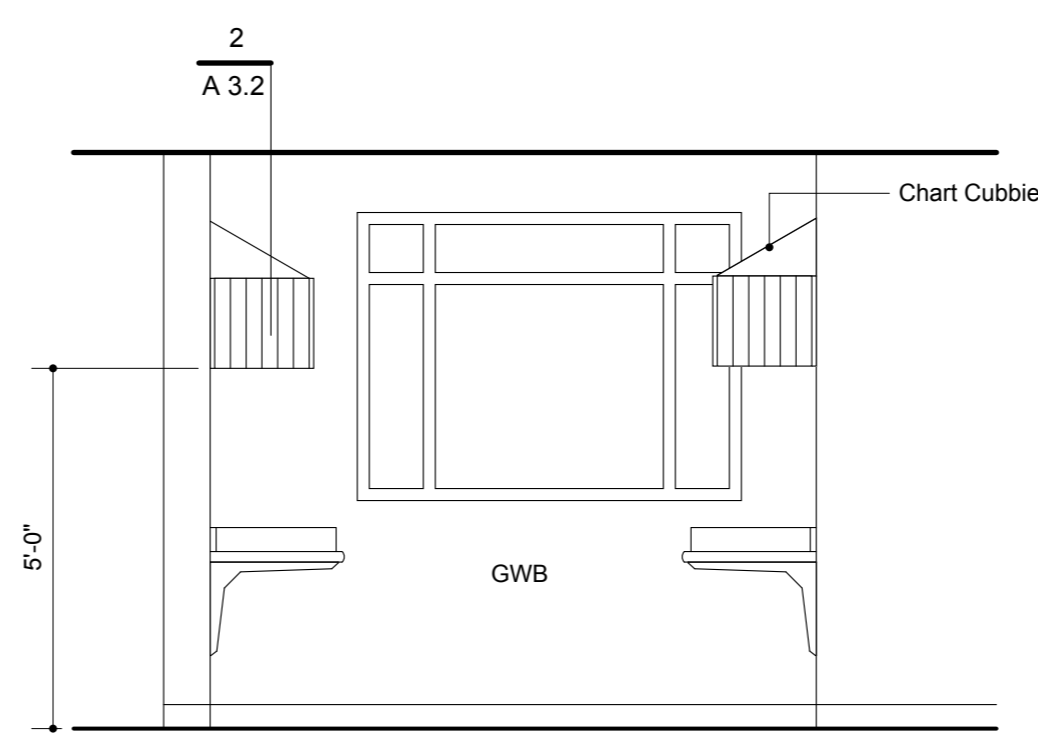
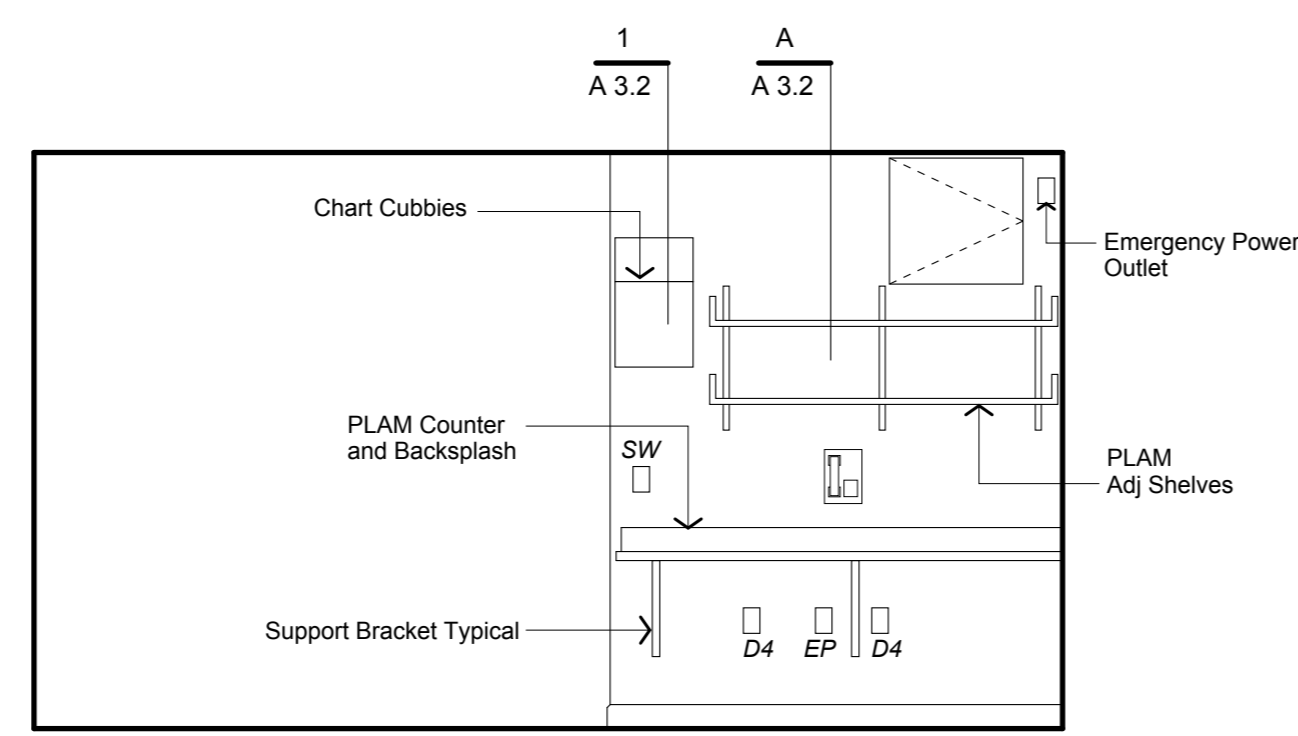
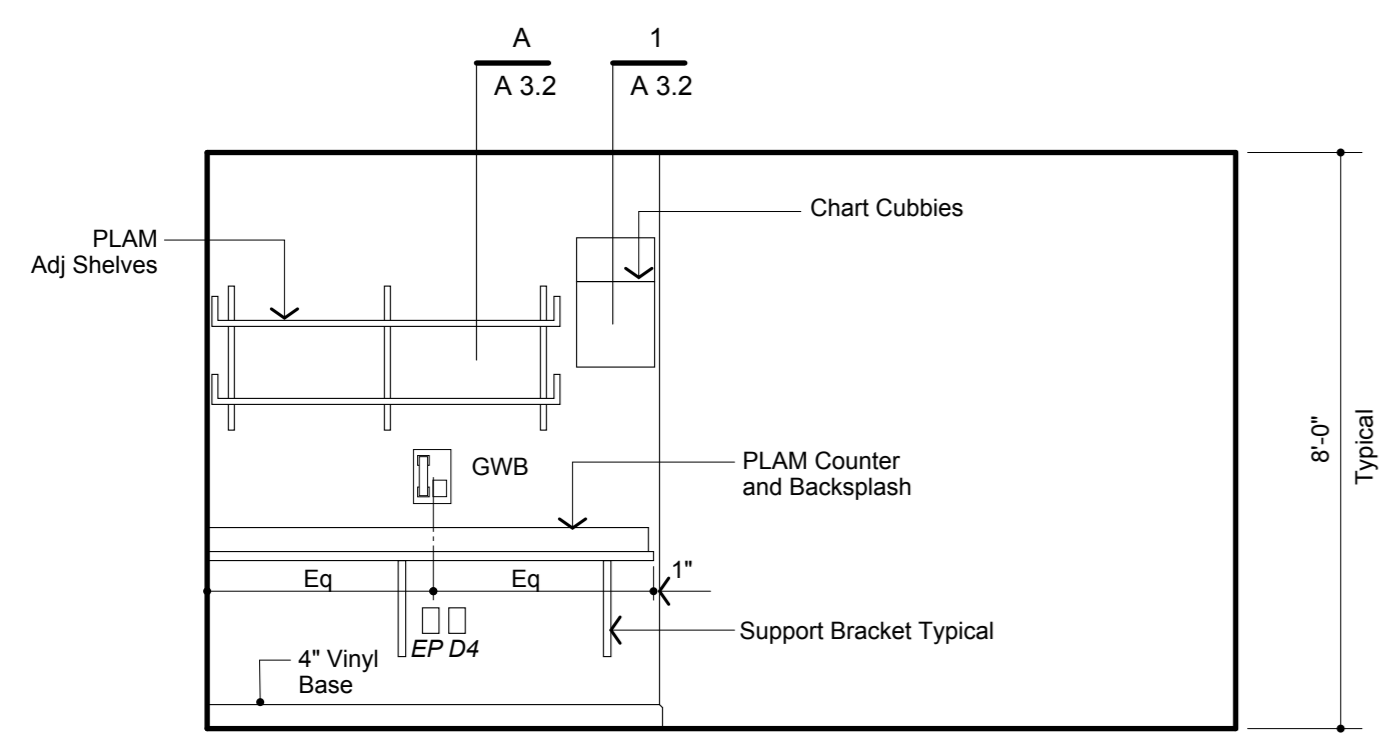
Mfr	Type	Model No.	Mounting	Lamping	Remarks
A	Lightolier	Typical Corridor Ceiling Luminaire	QVS 2 G PF OS 2 FT 120 SB	Recessed	(2) 40W TT5 Wire to existing lighting circuits / Verify continuity
B		Parabolic Troffer		Recessed	Existing Fixture To Be Reused

Ceiling Types

- ACT - 1 2 x 2 ACT. Tegular Edge Lay-In "Cirrus #589" by Armstrong. Provide 9/16" Suspension Grid System.
- ACT - 2 2 x 4 ACT. Square Edge Lay-In "Fine Fissured Humiguard #1729" by Armstrong. Provide 15/16" Suspension Grid System.

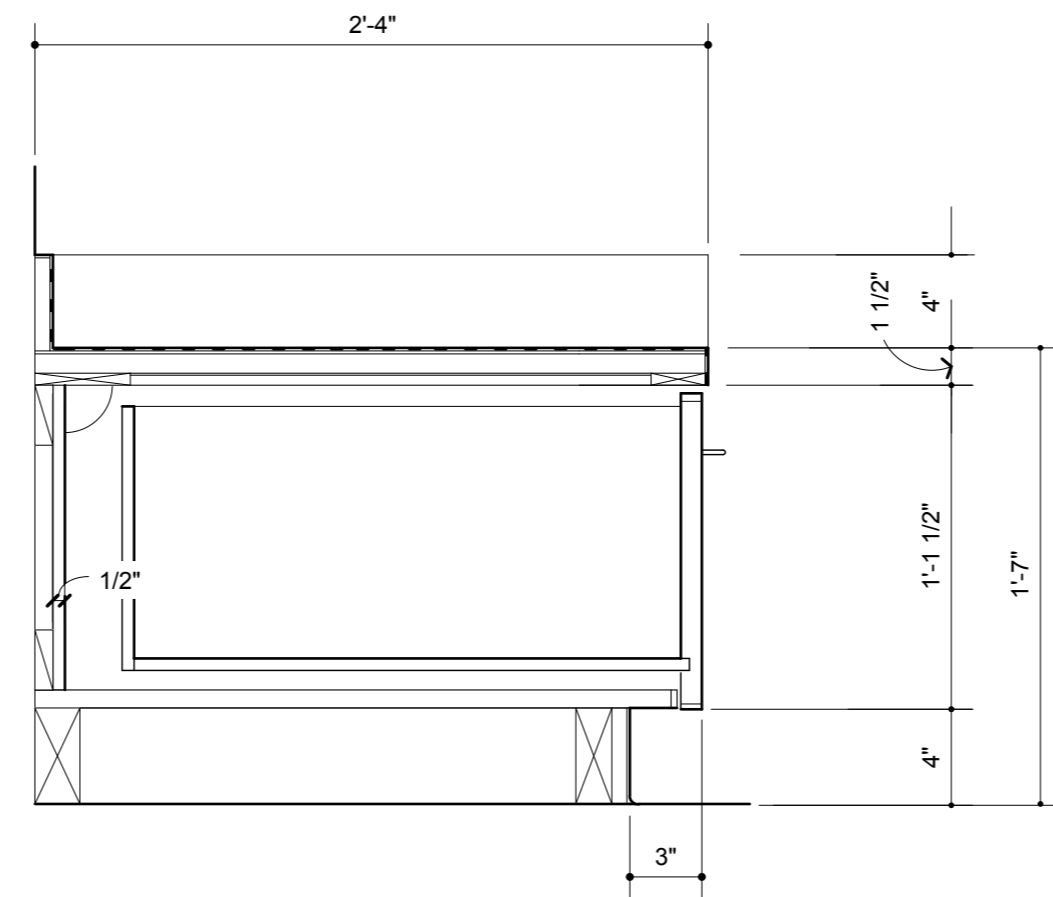
**Cabinet Materials**

PLAM	Pionite
Counter Core	3/4" MDF Unless Otherwise Noted
Counter Core	3/4" MDF Unless Otherwise Noted
Cabinet Pulls	Ives #38 B10B
Cabinet Hinges	Blum Series 125 Self Closing
File Drawer Slides	Accuride C437
Drawer Slides	Accuride C3837
Pencil Drawer Slides	Accuride C2006
3MM PVC Edging	Charter Industries - Provide At All Drawer Edges & Where Shown
Metal Counter Support Brackets	A&M Hardware (12 x 18 Powder Coated Gray)
Adj. Shelving Standards/Brackets	K&V Extra Heavy Duty 87 - 187

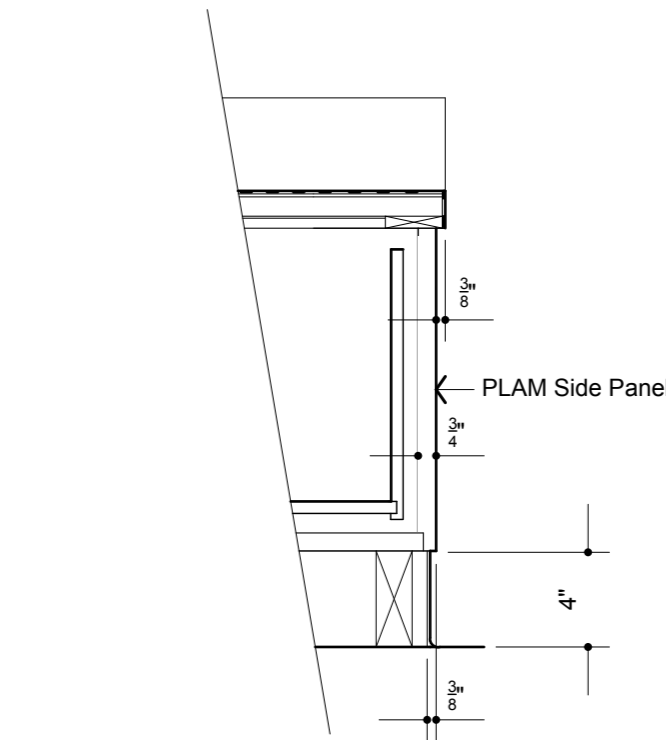


1 Chart Cubbies Section  
3"= 1'-0"

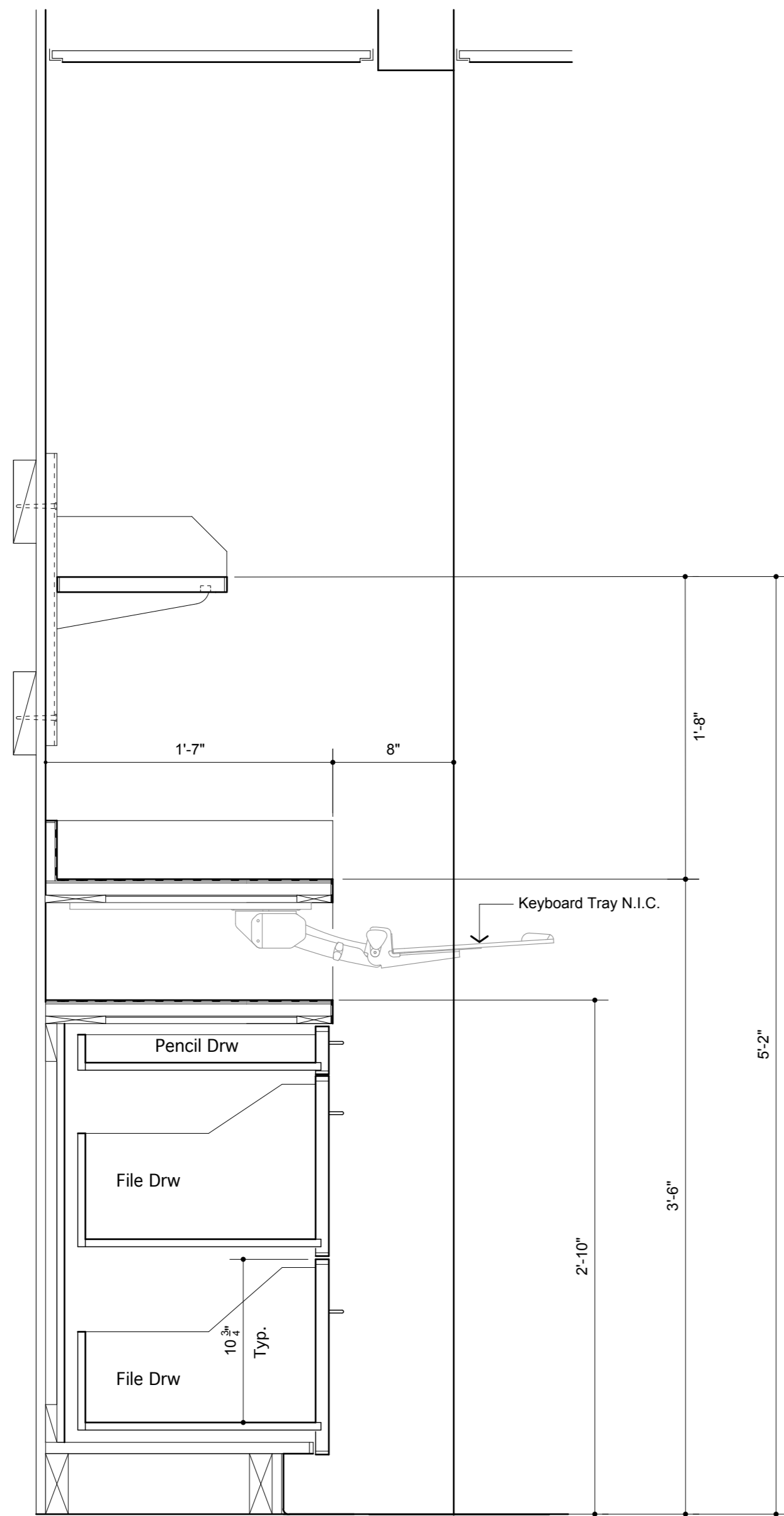
2 Chart Cubbies Section  
3"= 1'-0"



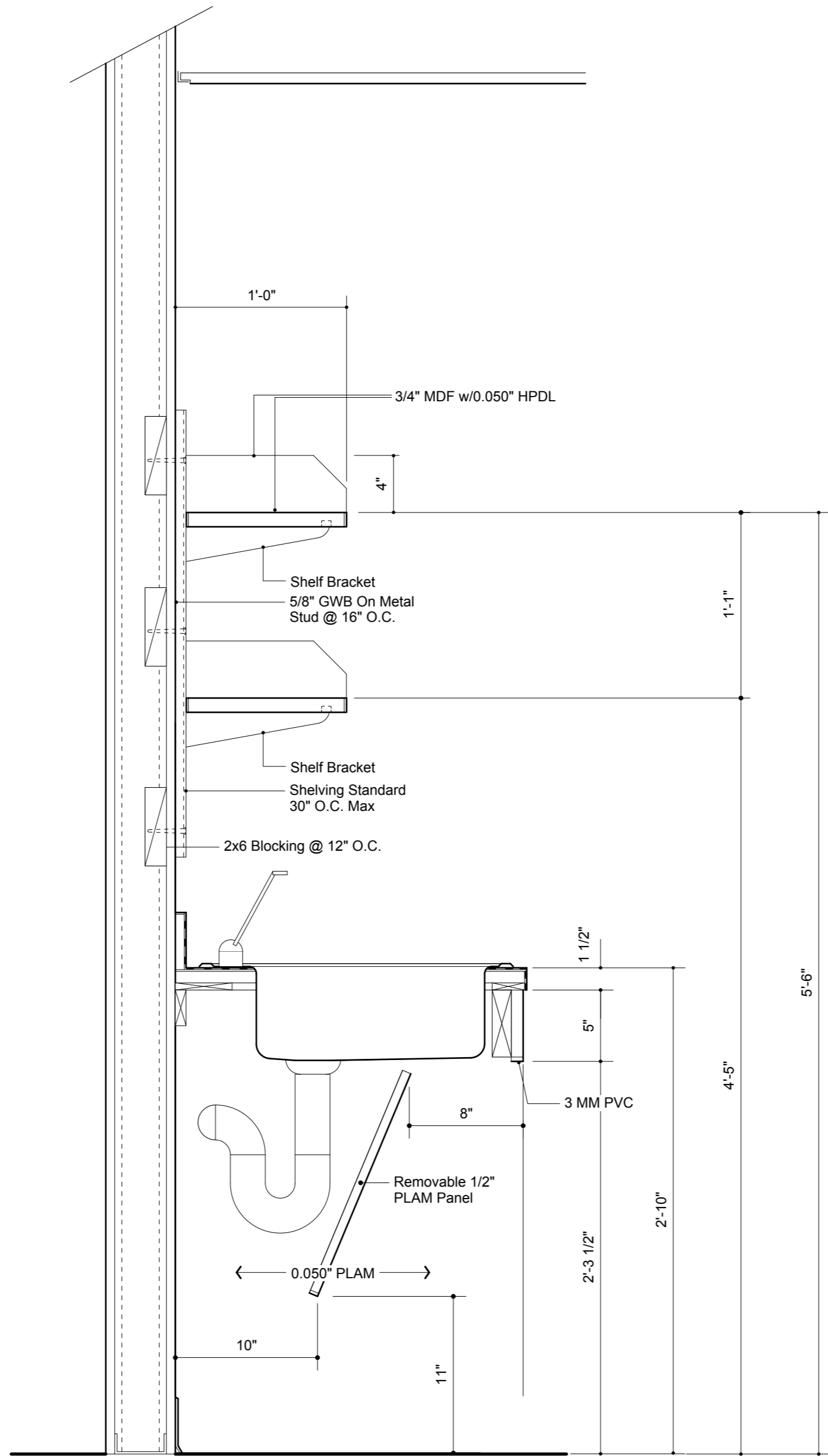
**B** Base Cabinet Section  
 1 1/2" = 1'-0"



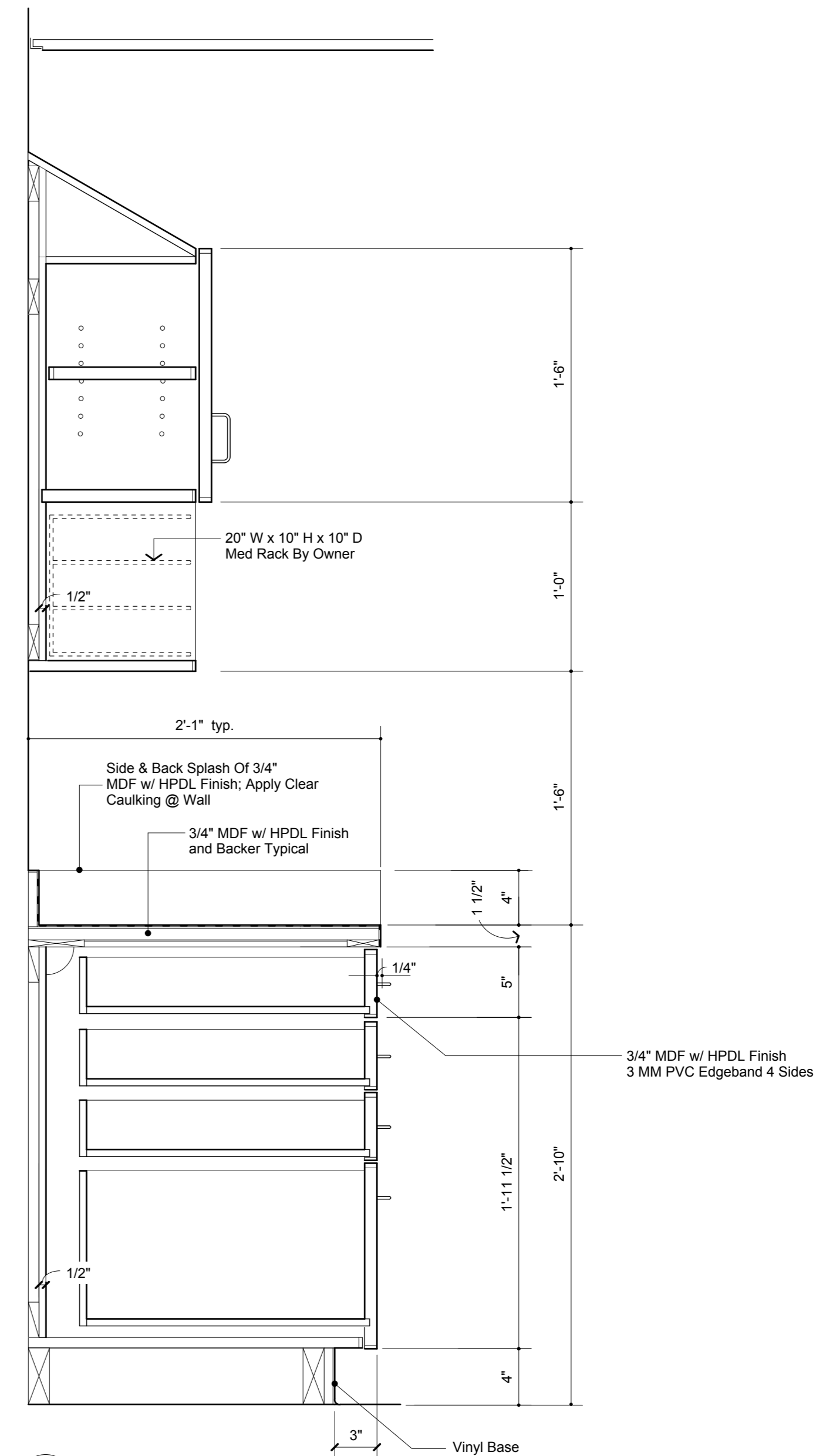
**C** Base Cabinet Section  
 1 1/2" = 1'-0"



**D** Base Cabinet Section  
 1 1/2" = 1'-0"



**E** Sink Section  
 1 1/2" = 1'-0"



**F** Base Cabinet Section  
 1 1/2" = 1'-0"