

# LIGHTING

	2x4 FLUORESCENT FIXTURE ASSOCIATED CONTROL DEVICE FIXTURE TYPE (SEE LIGHT FIXTURE SCHEDULE)
	1x4 FLUORESCENT FIXTURE
	2x2 FLUORESCENT FIXTURE
	FIXTURE WIRED TO UNSWITCHED NORMAL CIRCUIT
	FIXTURE WIRED TO UNSWITCHED EMERGENCY CIRCUIT
	FIXTURE WIRED TO SWITCHED EMERGENCY CIRCUIT
	DOWN LIGHT
	FLUORESCENT STRIP
	WALL MOUNTED FIXTURES
	TRACK LIGHTING
	POLE MOUNTED SITE LIGHTING FIXTURE FIXTURE TYPE (SEE LIGHT FIXTURE SCHEDULE)
	FLOOD LIGHT
	WALL WASH LIGHT FIXTURE
	EXIT SIGN, CEILING MOUNTED ARROW INDICATES EGRESS DIRECTION SHADING INDICATES SIGN FACE
	EXIT SIGN, WALL MOUNTED SHADING INDICATES SIGN FACE
	DUAL HEAD EMERGENCY LIGHT BATTERY PACK TD - TIME DELAY RESET
	REMOTE EMERGENCY LIGHTING HEAD
	WALL PACK
	S <sub>3</sub> 3-WAY TOGGLE SWITCH
	S <sub>o</sub> SINGLE POLE TOGGLE SWITCH INDICATES CONTROLLED FIXTURE
	S <sub>4</sub> 4-WAY TOGGLE SWITCH
	S <sub>II</sub> DUAL LEVEL SWITCHING
	S <sub>D</sub> DIMMER SWITCH. INCANDESCENT OR FLUORESCENT AS REQUIRED.
	S <sub>P</sub> TOGGLE SWITCH WITH PILOT LIGHT
	S <sub>T</sub> TIMER SWITCH, SPRING WOUND
	S <sub>DT</sub> SINGLE POLE DOUBLE THROW TOGGLE SWITCH, CENTER POSITION OFF
	S <sub>WP</sub> WEATHER PROOF
	S <sub>XP</sub> EXPLOSION PROOF
	S <sub>OS</sub> OCCUPANCY SENSOR SWITCH
	UNSWITCHED CONTINUATION OF BRANCH CIRCUIT
	HOME RUN
	OCCUPANCY SENSOR α INDICATES CONTROLLED FIXTURE INDICATES AIMING DIRECTION
	OCCUPANCY SENSOR RELAY
	DAYLIGHT SENSOR LIGHTS CONTROLLED BY SENSOR

# COMMUNICATION & DATA SYSTEMS

	TELEPHONE SYSTEM WALL JACK W-INDICATES WALL MOUNTED AT 60" AFF P-INDICATES PAYPHONE (2)-INDICATES 2 OUTLETS, SINGLE BOX
	DATA SYSTEM OUTLET
	COMBINATION VOICE/DATA SYSTEM OUTLET
	UNDERFLOOR TELEPHONE SYSTEM OUTLET
	UNDERFLOOR DATA SYSTEM OUTLET
	UNDERFLOOR VOICE & DATA OUTLET
	CATV CABLE TELEVISION SYSTEM OUTLET. MOUNT 18" AFF UNLESS OTHERWISE NOTED
	CCTV CLOSED CIRCUIT TELEVISION OUTLET. MOUNT 18" AFF UNLESS OTHERWISE NOTED
	PA PAGING SYSTEM CONTROL PANEL AND PAGING AMPLIFIER
	PAGING SYSTEM SPEAKER. CEILING MOUNTED
	PAGING SYSTEM SPEAKER. WALL MOUNT AT 1. FLUSH, 2. SURFACE, 3. HORN, 4. DUAL HORN
	VC VOLUME CONTROL
	HC INTERCOM SYSTEM HAND KEY
	CS CLOCK SPEAKER
	HS INTERCOM SYSTEM HAND SET
	WALL MOUNTED CLOCK
	CR CARD READER
	KP KEY PAD

# POWER

	NON-FUSED SAFETY SWITCH AMPERE RATING
	NEMA ENCLOSURE RATING
	FUSED SAFETY SWITCH. TOP NUMBER INDICATES SWITCH AMPERE RATING. LOWER NUMBER INDICATES FUSE RATING
	NEMA ENCLOSURE
	MAGNETIC MOTOR STARTER. FVNR UNLESS INDICATED OTHERWISE
	NEMA ENCLOSURE RATING
	NEMA SIZE (TYPICAL)
	COMBINATION CIRCUIT BREAKER/MAGNETIC MOTOR STARTER FIRST NUMBER INDICATES CIRCUIT BREAKER AMPERE RATING SECOND NUMBER INDICATES NEMA STARTER SIZE
	COMBINATION FUSED DISCONNECT/MAGNETIC MOTOR STARTER NUMBERS INDICATE DISCONNECT AMPERE RATING/FUSE RATING/NEMA STARTER SIZE
	NON-FUSED DISCONNECT/MAGNETIC MOTOR STARTER FIRST NUMBER INDICATES CIRCUIT BREAKER AMPERE RATING SECOND NUMBER INDICATES NEMA STARTER SIZE
	MANUAL MOTOR STARTER. TOGGLE OPERATED, 1,2 OR 3 POLE AS REQUIRED. OVERLOAD PROTECTION
	MANUAL MOTOR SWITCH, TOGGLE OPERATED, SINGLE PHASE. 1 OR 2 POLE AS REQUIRED (NO OVERLOAD PROTECTION)
	ENCLOSED CIRCUIT BREAKER AMPERE RATING
	ELECTRIC MOTOR, NUMBER INDICATES HORSEPOWER RATING
	EXPLOSION PROOF MOTOR
	VAV VARIABLE AIR VOLUME CONTROL ACTUATORS
	HS H/O/A LOCAL SELECTOR SWITCH H/O/A - HAND/OFF/AUTO
	EMO EMERGENCY OFF BREAK GLASS STATION
	PB PUSHBUTTON STATION
	J JUNCTION BOX
	T TRANSFORMER
	P POWER POLE
	CONDUIT TURNING UP
	CONDUIT TURNING DOWN
	EY CONDUIT SEAL
	E DUPLEX RECEPTACLE, NEMA 5-20R. INSTALLED ON EMERGENCY CIRCUIT (TYPICAL) GFI DUPLEX RECEPTACLE, NEMA 5-20R
	HOSPITAL GRADE DUPLEX RECEPTACLE, NEMA 5-20R
	HOSPITAL GRADE GFCI DUPLEX RECEPTACLE, NEMA 5-20R
	HOSPITAL GRADE ISOLATED GROUND DUPLEX RECEPTACLE, NEMA 5-20R
	S SINGLE RECEPTACLE, NEMA 5-20R
	DOUBLE DUPLEX (QUADRUPLEX) RECEPTACLE, NEMA 5-20R
	HOSPITAL GRADE DOUBLE DUPLEX RECEPTACLE NEMA 5-20R
	S SWITCHED RECEPTACLE
	FLOOR OUTLET, DUPLEX RECEPTACLE, NEMA 5-20R
	POWER RECEPTACLE, 480 VOLT NEMA CONFIGURATION AS NOTED.
	POWER RECEPTACLE, 240 VOLT NEMA CONFIGURATION AS NOTED.
	PANELBOARD, NORMAL POWER
	PANELBOARD, EMERGENCY POWER
	MULTI OUTLET ASSEMBLY

# NURSE CALL SYSTEM

	CL NURSE CALL CALL LIGHT
	PATIENT CALL BUTTON
	NURSE CALL PULL CORD
	N M NURSE CALL MASTER STATION

# LINE TYPES

	EXISTING
	NEW
	DEMOLITION

# FIRE ALARM

	F FIRE ALARM MANUAL PULL STATION
	FA FIRE ALARM AUDIBLE/VISIBLE NOTIFICATION APPLIANCE (GENERAL EVACUATION)
	FV FIRE ALARM VISIBLE ONLY NOTIFICATION APPLIANCE CANDELA INTENSITY-15/75 UNLESS OTHERWISE NOTED CEILING MOUNTED
	P PHOTOELECTRIC SMOKE DETECTOR. CEILING MOUNTED A INDICATES AUXILIARY CONTACT.
	DH FIRE ALARM SYSTEM MAGNETIC DOOR HOLDER

# ABBREVIATIONS

A.AMP	AMPERE	LA	LIGHTNING ARRESTER
AFF	ABOVE FINISHED FLOOR	LTG	LIGHTING
AFG	ABOVE FINISHED GRADE	MC	METAL CLAD
AHJ	AUTHORITY HAVING JURISDICTION	MCB	MAIN CIRCUIT BREAKER
AIC	AMPERE INTERRUPTING CAPACITY	MFR	MANUFACTURER
AWG	AMERICAN WIRE GAUGE	MI	MINERAL INSULATED
BFG	BELOW FINISHED GRADE	MLO	MAIN LUG ONLY
BOS	BOTTOM OF STEEL	MTD	MOUNTED
C	CONDUIT, CONDUCTOR	MV	MEDIUM VOLTAGE
CATV	CABLE TELEVISION	NC	NORMALLY CLOSED
CB	CIRCUIT BREAKER	NEC	NATIONAL ELECTRICAL CODE
CCTV	CLOSED CIRCUIT TELEVISION	NEG	NEGATIVE
CPT	CONTROL POWER TRANSFORMER	NEUT	NEUTRAL
CT	CURRENT TRANSFORMER	NIC	NOT IN CONTRACT
CU	COPPER	NO	NORMALLY OPEN
DACT	DIGITAL ALARM COMMUNICATOR TRANSMITTER	NTS	NOT TO SCALE
DB	DIRECT BURIED	PF	POWER FACTOR
DISC	DISCONNECT	PH	PHASE
DN	DOWN	PVC	POLYVINYL CHLORIDE
EMT	ELECTRICAL METALLIC TUBING	RGS	RIGID STEEL CONDUIT
EWC	ELECTRIC WATER COOLER	RSC	RIGID STEEL CONDUIT
FAA	FIRE ALARM ANNUNCIATOR	RTD	RESISTANCE TEMPERATURE DETECTOR
FAFP	FIRE ALARM CONTROL PANEL	SN	SOLID NEUTRAL
FBO	FURNISHED BY OTHERS	STP	SHIELDED TWISTED PAIR
FU	FUSE	STT	SHIELDED TWISTED TRIPLET
FWE	FURNISHED WITH EQUIPMENT	SWBD	SWITCHBOARD
GEN	GENERATOR	SWGR	SWITCHGEAR
GFCI	GROUND FAULT CIRCUIT BREAKER	TOS	TOP OF STEEL
GND	GROUND	TRANSF	TRANSFORMER
HP	HORSEPOWER	TVSS	TRANSIENT VOLTAGE SURGE SUPPRESSOR
HTR	HEATER	V	VOLT
IG	ISOLATED GROUND	VA	VOLT-AMPERE
IMC	INTERMEDIATE METAL CONDUIT	VAR	VOLT-AMPERE REACTIVE
K	KILO	WM	WATT METER
KCMIL	THOUSAND CIRCULAR MILS	WP	WEATHER PROOF
KV	KILOVOLT	XFMR	TRANSFORMER
KVA	KILOVOLT-AMPERE	XP	EXPLOSION PROOF
KVAR	KILOVOLT-AMPERE REACTIVE		
KW	KILOWATT		
KWH	KILOWATT-HOUR		

# GENERAL NOTES:

- ALL WORK SHALL BE PERFORMED IN ACCORDANCE WITH NFPA-70, NATIONAL ELECTRICAL CODE (NEC).
- ALL MOTOR SAFETY SWITCHES, DISCONNECTS AND MOTOR STARTERS ARE PROVIDED BY DIVISION 16000 UNLESS NOTED AS FURNISHED WITH EQUIPMENT (FWE).
- UNLESS OTHERWISE NOTED CONVENIENCE RECEPTACLES SHALL BE MOUNTED 18-INCHES AFF, LIGHTING TOGGLE SWITCHES 48-INCHES AFF, DATA SYSTEM OUTLETS 18-INCHES AFF, AND FIRE ALARM NOTIFICATION DEVICES 80-INCHES AFF OR 6-INCHES BELOW CEILING, WHICHEVER IS LOWER.
- ALL PENETRATIONS THROUGH FLOORS, RATED WALLS AND PARTITIONS SHALL BE SEALED WITH UL APPROVED FIRE SEALANT MATERIAL TO MAINTAIN THE RATING OF SEPARATION.
- ALL ENCLOSURES, CONDUIT BODIES AND THEIR COVERS CONTAINING FIRE ALARM SYSTEM CONDUCTORS SHALL BE PAINTED RED.
- AN EQUIPMENT GROUNDING CONDUCTOR SHALL BE INSTALLED WITH EVERY FEEDER AND BRANCH CIRCUIT.
- UNLESS OTHERWISE NOTED WIRING SHALL BE 2#12 AWG CONDUCTORS AND #12 GND. HOME RUNS FED FROM 20A-1P CIRCUITS IN EXCESS OF 100 FEET SHALL BE #10 AWG.
- FLEXIBLE CONNECTIONS TO MOTORS SHALL BE LIQUID TIGHT FLEXIBLE METAL CONDUIT, UNLESS OTHERWISE NOTED.
- LIGHTING TOGGLE SWITCHES SHALL BE HEAVY DUTY SPECIFICATION GRADE 120 VOLT, SIDE WIRED AND PROVIDED WITH GROUNDING SCREW. LEVITON, PASS AND SEYMOUR OR APPROVED EQUAL. COORDINATE COLOR WITH ARCHITECT.
- CONVENIENCE RECEPTACLES SHALL BE HOSPITAL GRADE GROUNDING TYPE NEMA 5-20R, SIDE WIRED. LEVITON, PASS AND SEYMOUR OR APPROVED EQUAL. COORDINATE COLOR WITH ARCHITECT.
- PROVIDE WALL PLATES FOR ALL WIRING DEVICES, NYLON SMOOTH TYPE IN FINISHED AREAS AND GALVANIZED IN UNFINISHED AREAS.
- ALL WIRING SHALL BE 600V, COPPER WITH THHN/THWN INSULATION.

# GENERAL NOTE

- ALL GENERAL NOTES, SYMBOL LISTS, AND DETAILS ARE TO BE CONSIDERED AS APPLICABLE TO ALL ELECTRICAL DRAWINGS FOR THIS PROJECT. SYMBOLS AND ABBREVIATIONS SHOWN ON THIS SHEET ARE FOR REFERENCE ONLY AND DO NOT INDICATE THEIR INCORPORATION IN THE DESIGN.

NO.	DATE	DESCRIPTION

GRAPHIC SCALE:	0" 1"
SCALE:	NONE
PROJECT MANAGER:	CDP
JC/DRAWN BY:	CDS
A/E OF RECORD:	JPP
CAD FILE:	E-001-07162
PROJECT NO:	07162
DATE:	
SHEET TITLE:	

# LEGEND AND GENERAL NOTES





**NOTE:**

- SEE SHEET E--001 FOR LEGEND AND GENERAL NOTES.

**KEYED NOTES:**

- EXISTING FIRE ALARM DEVICE TO BE REMOVED AND REINSTALLED AS INDICATED ON SYSTEMS PLANS.
- EXISTING PUBLIC ADDRESS SPEAKER TO BE REMOVED AND REINSTALLED BY OWNER AS INDICATED ON SYSTEMS PLANS.
- EXISTING LIGHT FIXTURE TO BE REMOVED, SAFELY STORED, AND REINSTALLED AS INDICATED ON LIGHTING PLANS.
- EXISTING VIEW BOX TO BE REMOVED AND RETURNED TO OWNER.
- EXISTING NURSE CALL DEVICE TO BE REMOVED AND REINSTALLED BY OWNER AS INDICATED ON SYSTEMS PLANS.
- EXISTING VIEWBOX TO BE REMOVED AND REINSTALLED AS INDICATED ON POWER PLANS.



REV	DESCRIPTION	DATE

GRAPHIC SCALE:  
0" 1"

SCALE: 1/4"=1'-0"

PROJECT MANAGER: CDP  
JC/DRAWN BY: CDS  
A/E OF RECORD: JPP  
CAD FILE: ED101-07162  
PROJECT NO: 07162

DATE: \_\_\_\_\_  
SHEET TITLE:  
**ELECTRICAL  
DEMO PLAN**



**NOTE:**

1. SEE SHEET E-001 FOR LEGEND AND GENERAL NOTES.

**KEYED NOTES:**

- ① NEW LIGHT FIXTURE TO BE CONNECTED TO EXISTING LIGHTING BRANCH CIRCUIT SERVING THE AREA.
- ② REINSTALL LIGHT FIXTURE REMOVED DURING DEMOLITION. CONNECT TO EXISTING LIGHTING BRANCH CIRCUIT SERVING THE AREA. CLEAN AND RELAMP. REPLACE ALL DEFECTIVE BALLASTS.
- ③ NEW LIGHT FIXTURE TO BE CONNECTED TO EXISTING SWITCHED LIGHTING BRANCH CIRCUIT SERVING THE CORRIDOR.
- ④ REINSTALL EXISTING EXIT SIGN REMOVED DURING DEMOLITION.



PROJECT TITLE:  
**MAINE MEDICAL CENTER  
RT RENOVATIONS PHASE 2**  
22 BRAMHALL ST  
PORTLAND, MAINE

CURRENT ISSUE STATUS:  
**ISSUED FOR PERMITTING  
11-2-07**

REV	DESCRIPTION	DATE

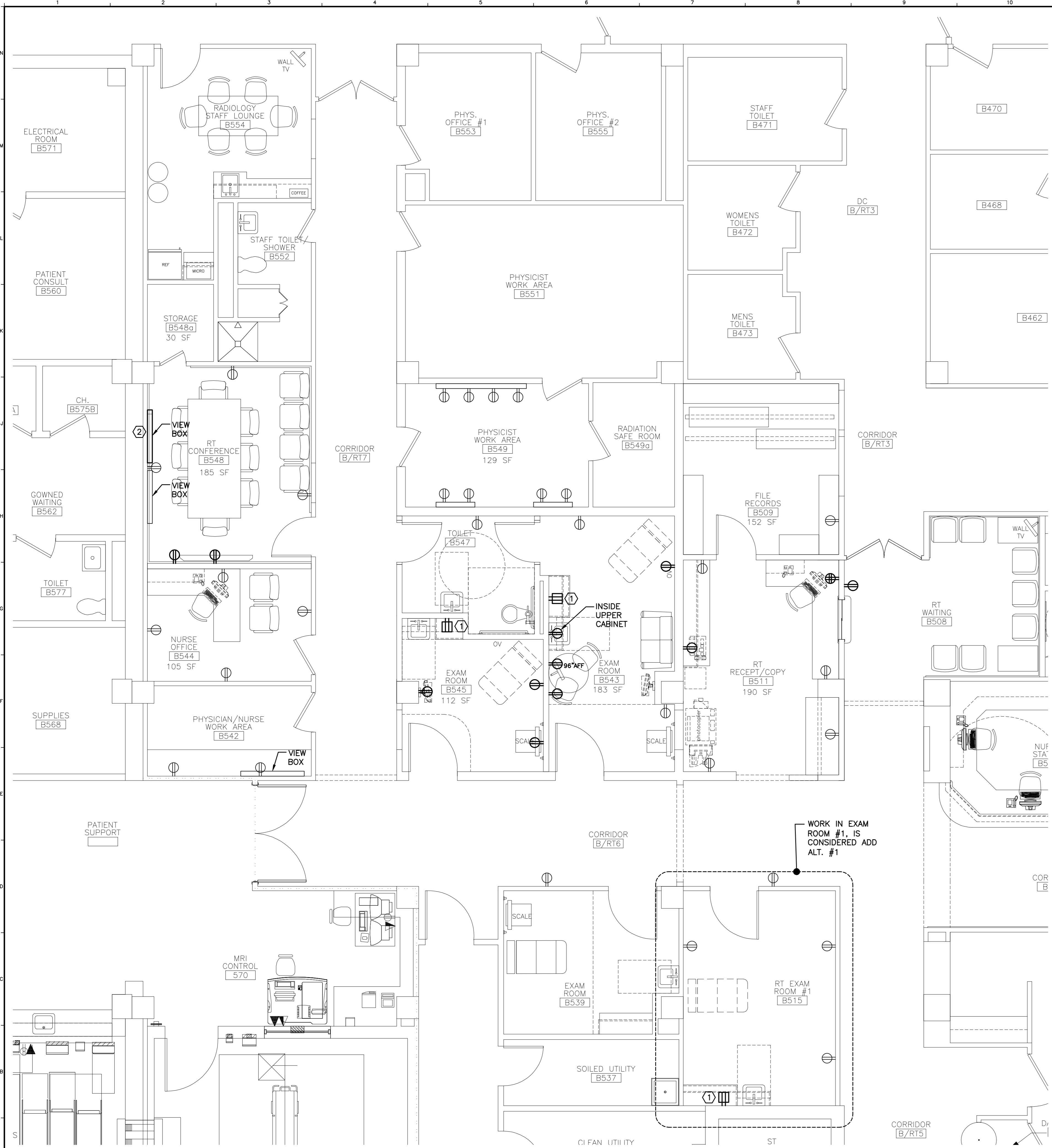
GRAPHIC SCALE:  
0" 1"

SCALE: 1/4"=1'-0"

PROJECT MANAGER: CDP  
JC/DRAWN BY: CDS  
A/E OF RECORD: JPP  
CAD FILE: EL101-07162  
PROJECT NO: 07162

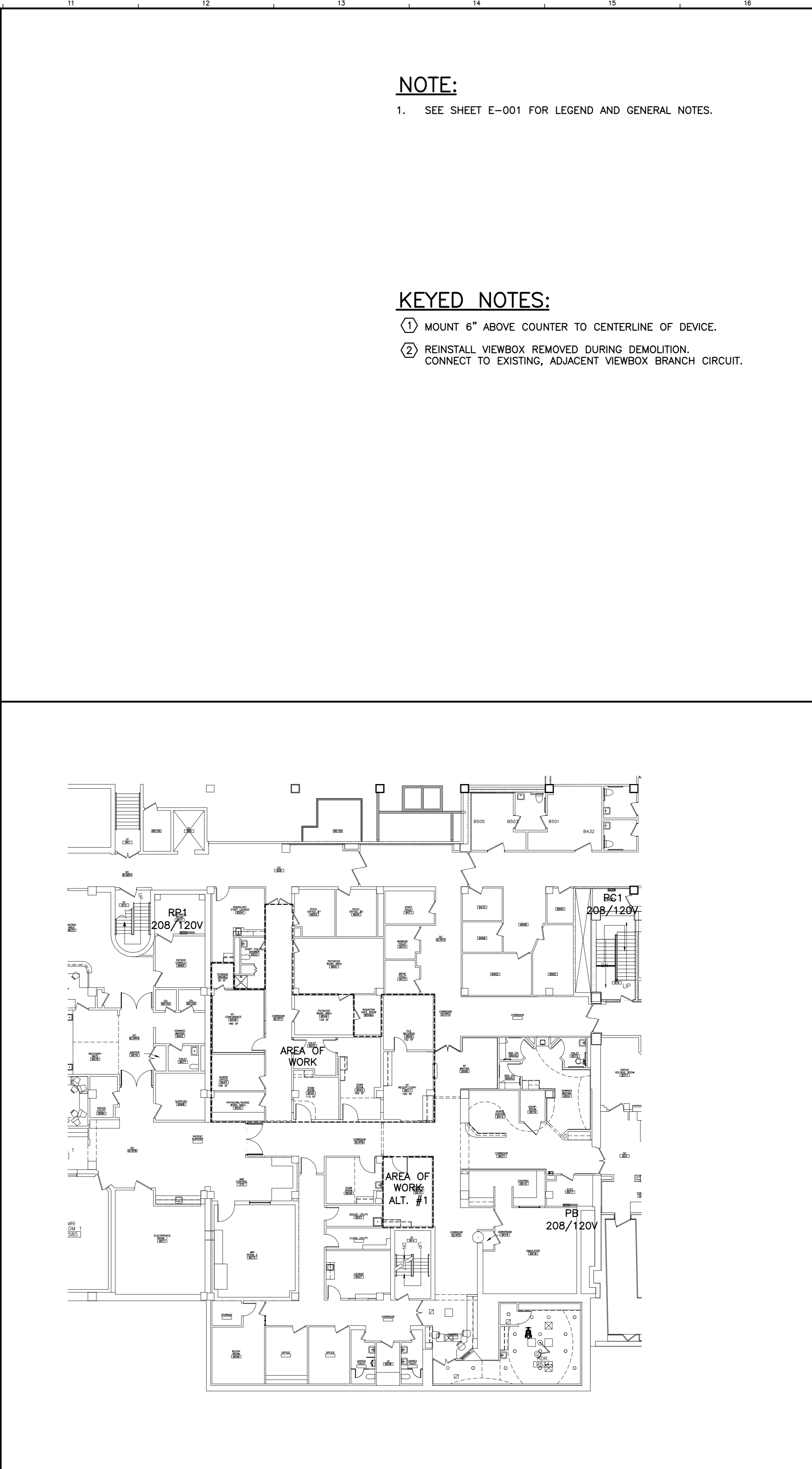
DATE:  
SHEET TITLE:



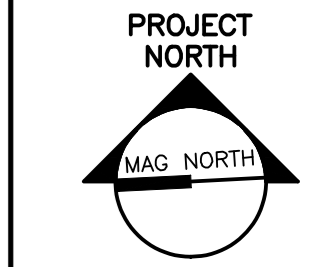


**NOTE:**  
1. SEE SHEET E-001 FOR LEGEND AND GENERAL NOTES.

**KEYED NOTES:**  
 ① MOUNT 6" ABOVE COUNTER TO CENTERLINE OF DEVICE.  
 ② REINSTALL VIEWBOX REMOVED DURING DEMOLITION. CONNECT TO EXISTING, ADJACENT VIEWBOX BRANCH CIRCUIT.



ARCHITECTURE ENGINEERING PLANNING  
 SWRT  
 144 Fore Street/P.O. Box 618  
 Portland, Maine 04104  
 tel. (207) 772-3846  
 fax. (207) 772-1070



PROJECT TITLE:  
**MAINE MEDICAL CENTER  
 RT RENOVATIONS PHASE 2**  
 22 BRANHALL ST  
 PORTLAND, MAINE

CURRENT ISSUE STATUS:  
**ISSUED FOR PERMITTING  
 11-2-07**

REV	DESCRIPTION	DATE

GRAPHIC SCALE:  
 0" 1"

SCALE: 1/4"=1'-0"

PROJECT MANAGER: CDP  
 JC/DRAWN BY: CDS  
 A/E OF RECORD: JPP  
 CAD FILE: EP101-07162  
 PROJECT NO: 07162  
 DATE:  
 SHEET TITLE:

**POWER FLOOR PLAN**

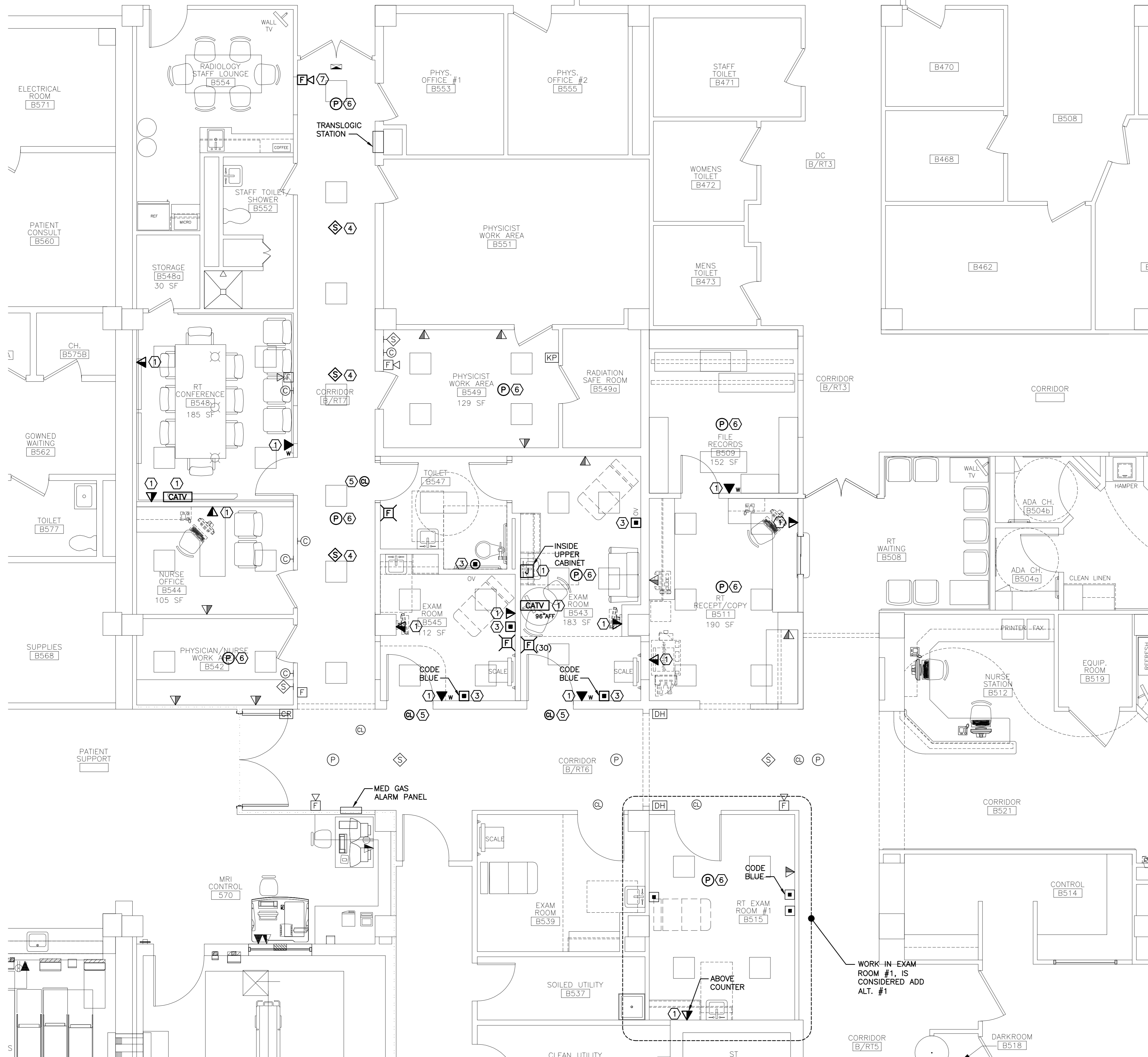
SHEET No.  
**EP101**

© copyright 2007 SMRT INC.

**A1 FLOOR PLAN**  
 1/4"=1'-0"

**A10 FLOOR PLAN**  
 1/4"=1'-0"

PROCESS PRINT



**NOTE:**

1. SEE SHEET E-001 FOR LEGEND AND GENERAL NOTES.

**KEYED NOTES:**

- ① FURNISH AND INSTALL 4" SQUARE JUNCTION BOX WITH 3/4" CONDUIT STUB UP TO ABOVE ACCESSIBLE CEILING. PROVIDE PULLSTRINGS AND RUBBER GASKETS BETWEEN CONDUITS AND BACKBOXES. COORDINATE WITH OWNER'S TEL/DATA AND SYSTEMS CONTRACTORS PRIOR TO INSTALLATION.
- ② MOUNT 6" ABOVE COUNTER TO CENTERLINE OF DEVICE.
- ③ FURNISH AND INSTALL 4" SQUARE JUNCTION BOX WITH ONE 3/4" EMT STUBBED ROUTED TO ABOVE CEILING IN CORRIDOR. PROVIDE PULLSTRINGS AND RUBBER GASKETS BETWEEN CONDUITS AND BACKBOXES. COORDINATE WITH NURSE CALL SYSTEM INSTALLER PRIOR TO WORK.
- ④ SPEAKER TO BE FURNISHED AND INSTALLED BY OWNER'S SUBCONTRACTOR AND RECONNECTED TO EXISTING SYSTEM.
- ⑤ CEILING MOUNT NURSE CALL DOME BY OWNER'S NURSE CALL SYSTEM INSTALLER.
- ⑥ NEW LOCATION OF EXISTING FIRE ALARM DEVICES REMOVED DURING DEMOLITION. EXTEND EXISTING WIRING AND RECONNECT TO NOTIFICATION AND INITIATION CIRCUITS AS REQUIRED. PROVIDE REQUIRED RECONFIGURATION AND REPROGRAMMING OF EXISTING SYSTEM AS REQUIRED.
- ⑦ FURNISH AND INSTALL NEW FIRE ALARM VISUAL DEVICE TO MATCH EXISTING BUILDING STANDARD. EXTEND EXISTING WIRING AND RECONNECT TO NOTIFICATION CIRCUITS AS REQUIRED. PROVIDE REQUIRED RECONFIGURATION AND REPROGRAMMING OF EXISTING SYSTEM AS REQUIRED.



ARCHITECTURE ENGINEERING PLANNING  
 SWRT  
 144 Fore Street/P.O. Box 618  
 Portland, Maine 04104  
 tel. (207) 772-3846  
 fax. (207) 772-1070



PROJECT TITLE:  
**MAINE MEDICAL CENTER  
 RT RENOVATIONS PHASE 2**  
 22 BRAMHALL ST  
 PORTLAND, MAINE  
 CURRENT ISSUE STATUS:  
**ISSUED FOR PERMITTING  
 11-2-07**

REV	DESCRIPTION	DATE

GRAPHIC SCALE:  
 0" 1"  
 SCALE: 1/4"=1'-0"  
 PROJECT MANAGER: CDP  
 JC/DRAWN BY: CDS  
 A/E OF RECORD: JPP  
 CAD FILE: EY101-07162  
 PROJECT NO: 07162  
 DATE:  
 SHEET TITLE:

**SYSTEMS  
 FLOOR PLAN**

A1 FLOOR PLAN

1/4"=1'-0" \*

SHEET No.  
**EY101**  
 © copyright 2007 SWRT INC.