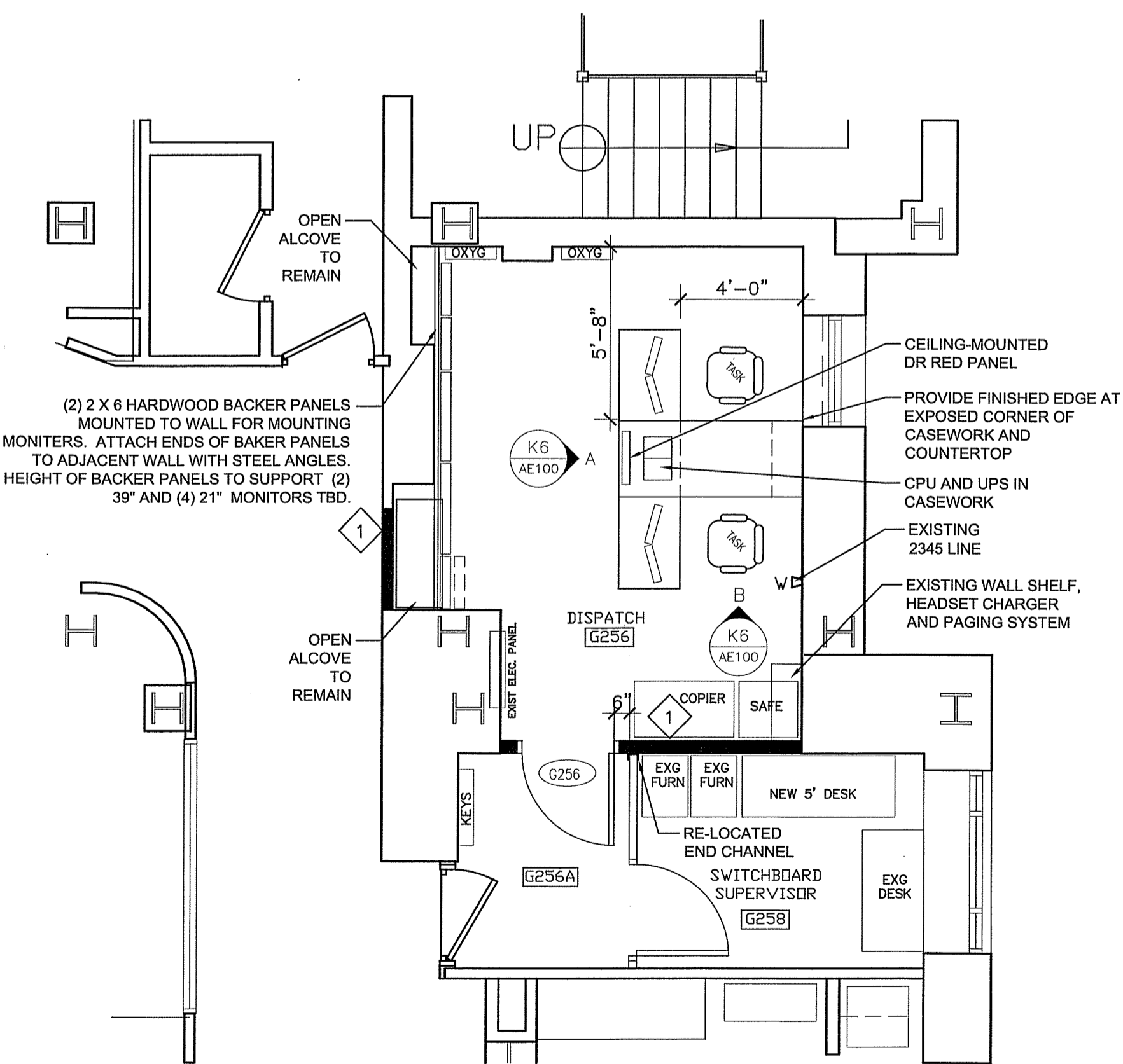


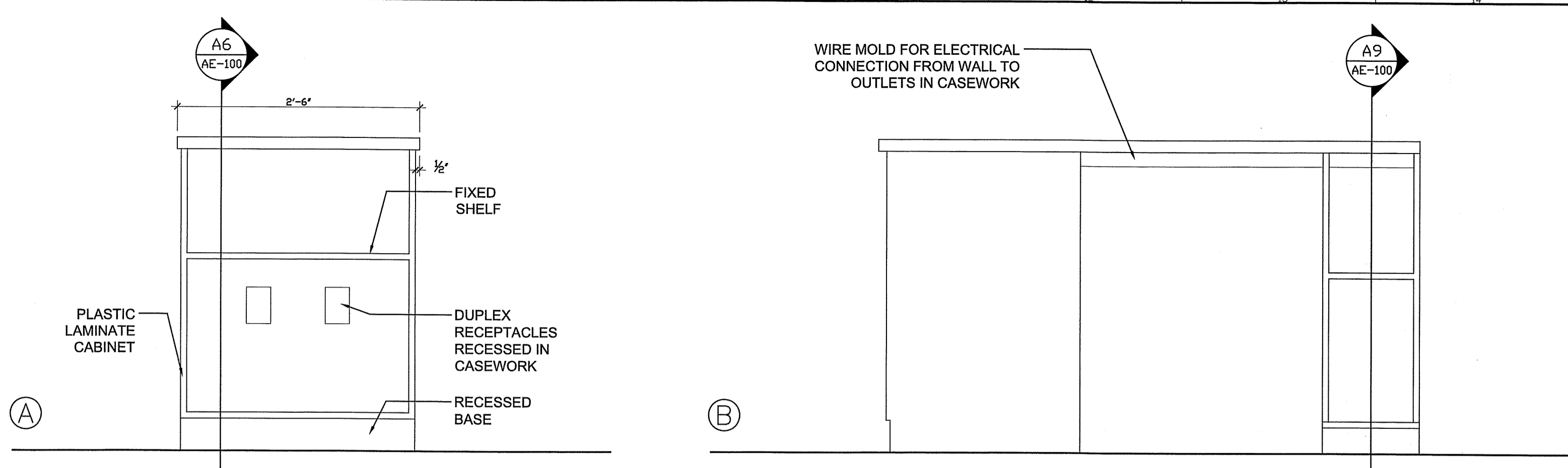
H1 REMOVALS PLAN

1/4" = 1'-0"



A1 FLOOR PLAN

1/4" = 1'-0"



K6 CASEWORK ELEVATIONS

1" = 1'-0"

ROOM FINISH SCHEDULE

NO.	ROOM NAME	FLOOR	BASE	WALL				CEILING	HEIGHT	REMARKS
				NORTH	EAST	SOUTH	WEST			
G256	DISPATCH	EXIST	EXIST	PT-1	PT-1	PT-1	PT-1	EXIST	EXIST	
G256A	VESTIBULE	EXIST	EXIST	PT-1	PT-1	PT-1	PT-1	EXIST	EXIST	
G258	SWITCHBOARD SUPERVISOR	EXIST	EXIST	PT-1	PT-1	PT-1	PT-1	EXIST	EXIST	

DOOR SCHEDULE

DOOR NO.	DOOR			GLAZE	DETAILS		HWS	FIRE RTG. (MIN.)	REMARKS
	SIZE	MAT'L	ELEVATION		MAT'L	ELEV			
G256	3'-0" X 7'-0"	WOOD	D	*	HM	1	1	*	

DOOR HARDWARE:
1. HINGES, LOCKSET (OFFICE FUNCTION), WALL STOP FOR BOTH LEAVES.

FINISH SPECIFICATIONS:

PAINT (PT): PAINT ALL NEW AND EXISTING WALLS AND TRIM. PROVIDE ONE FINISH COAT AT EXISTING SURFACES. PROVIDE PRIMER AND 2 COATS AT NEW SURFACES. PAINT PRODUCTS ARE AS FOLLOWS:

INTERIOR LATEX PRIMER/SEALER:
SHERWIN WILLIAMS SUPERPAINT. TYPICAL AT NEW SURFACES.

INTERIOR LATEX (LOW SHEEN):
SHERWIN WILLIAMS SUPERPAINT. TYPICAL AT DRYWALL SURFACES.

INTERIOR LATEX (SEMIGLOSS):
SHERWIN WILLIAMS SUPERPAINT. TYPICAL AT DOOR FRAMES.

PT-1: ANTIQUE WHITE

GENERAL NOTES:

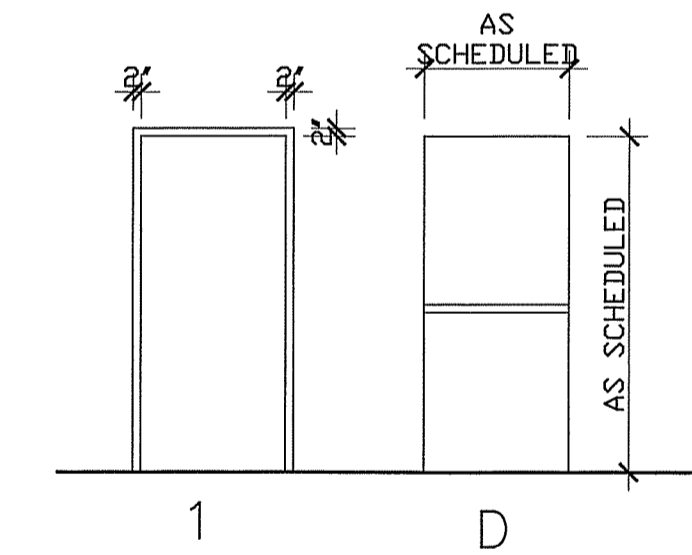
- DO NOT SCALE DRAWINGS
- FIELD VERIFY ALL DIMENSIONS PRIOR TO PROCEEDING WITH WORK. IF DISCREPANCIES ARE FOUND, NOTIFY ARCHITECT IN WRITING FOR CLARIFICATION BEFORE PROCEEDING WITH WORK.
- ALL DIMENSIONS ARE MEASURED TO FACE OF FINISH.
- PROVIDE BLOCKING FOR ALL CASEWORK, WALL-MOUNTED DOOR STOPS, AND WALL-MOUNTED FIXTURES AND EQUIPMENT.
- PATCH HOLES AND CRACKS IN EXISTING WALLS TO RECEIVE NEW PAINT.
- PROVIDE FIRESTOPPING AT ALL MECHANICAL, ELECTRICAL AND PLUMBING PENETRATIONS IN FIRE-RATED PARTITIONS AND FLOOR/CEILING ASSEMBLIES. MATCH ASSEMBLY FIRE RATING.
- UNLESS NOTED OTHERWISE, ELECTRICAL CONDUIT AND WIRING, PLUMBING AND MECHANICAL PIPING SHALL BE CONCEALED AND WALL FRAMING SHALL BE OF ADEQUATE DIMENSION TO ACCOMPLISH THIS WITHOUT CHANGES IN WALL PLANE.
- CONTRACTOR SHALL PROVIDE INFECTION CONTROL ENCLOSURES PER MMC STANDARDS. AVOID ANY IMPACT TO THE AREAS DESIGNATED FOR OWNER USE AND OCCUPANCY.
- ALL FURNITURE IS N.I.C.

REMOVALS NOTES:

- ALL BUILDING STRUCTURAL ELEMENTS SHALL REMAIN U.N.O.
- PROTECT ALL EXISTING MATERIALS AND FINISHES. ANY MATERIALS OR FINISHES DISTURBED OR DAMAGED DURING DEMOLITION AND NEW WORK SHALL BE REPAIRED OR REPLACED AND FINISHED TO MATCH ADJACENT CONSTRUCTION CONTINUOUSLY TO NEAREST CORNER.
- DURING DEMOLITION AND NEW WORK, WHERE EXISTING CONDITIONS ARE FOUND TO BE DEFECTIVE, NOTIFY OWNER AND ARCHITECT AND PROVIDE CHANGE PROPOSAL FOR CORRECTION OF THESE CONDITIONS.

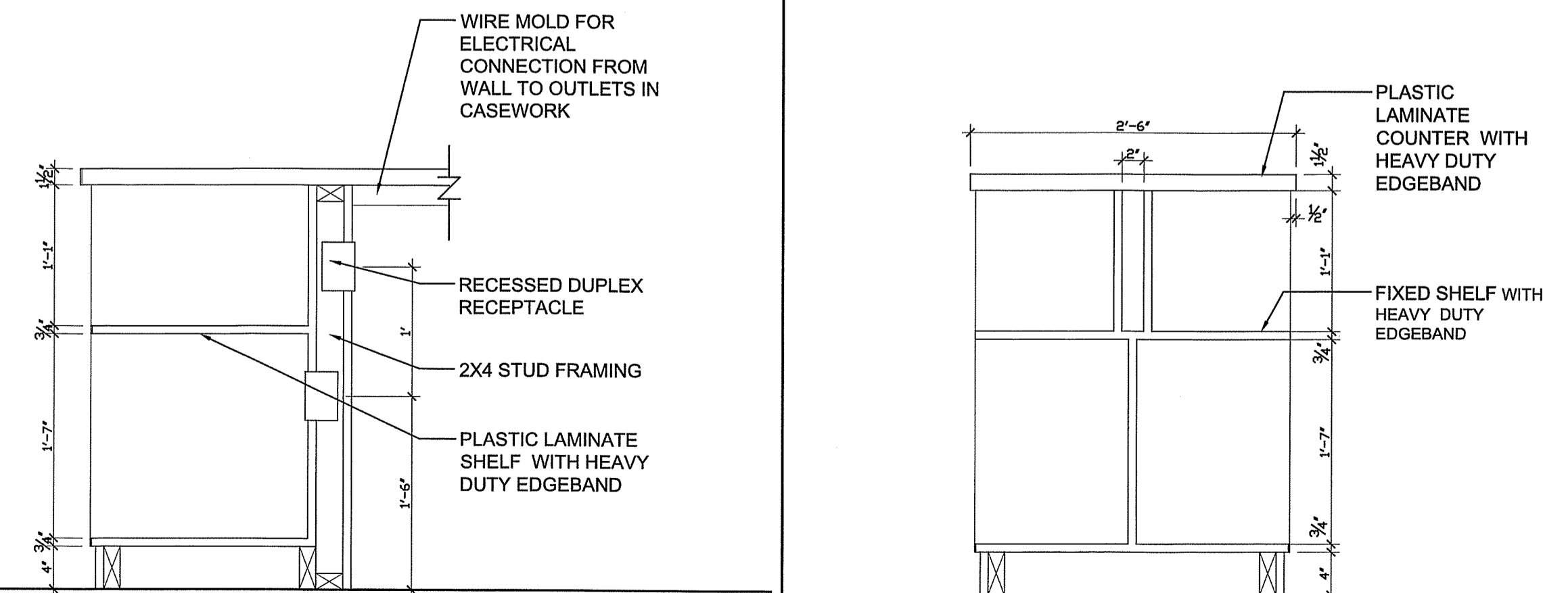
G6 SCHEDULES

N.T.S.



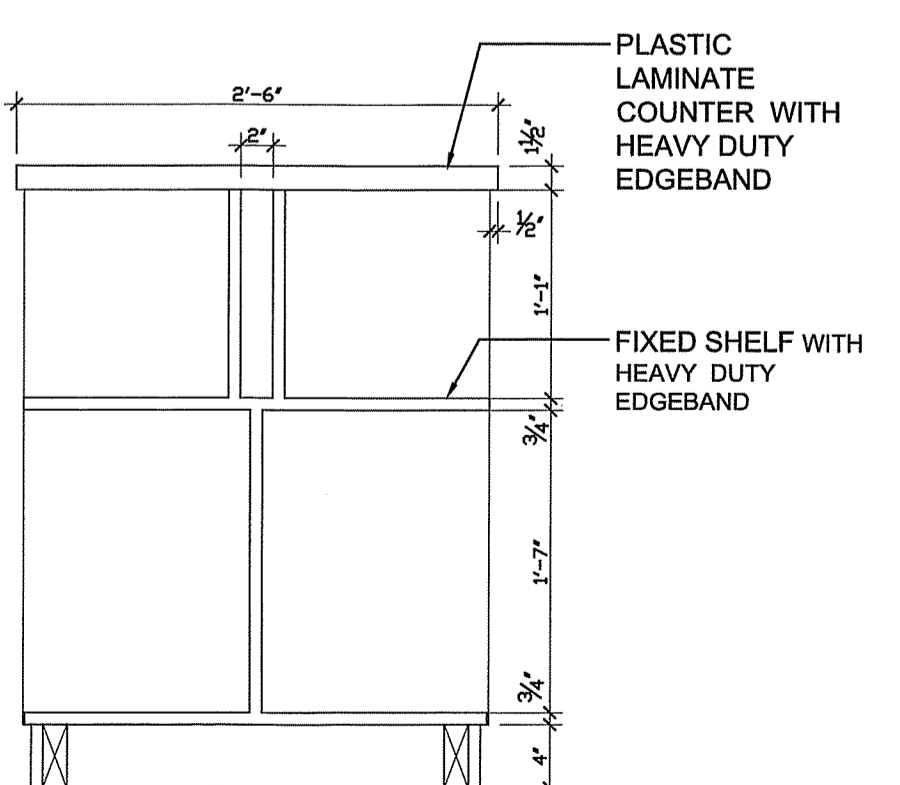
D9 DOOR AND FRAME TYPES

1" = 1'-0"



A6 MILLWORK DETAIL

1" = 1'-0"



A9 MILLWORK DETAIL

1" = 1'-0"

PARTITION TYPES:
1. 3/8" METAL STUDS SPACED 16" O.C. TO EXISTING CEILING WITH ACOUSTICAL BATT INSULATION, (1) LAYER 5/8" GYP BD ON BOTH SIDES.

CASEWORK SPECIFICATIONS:
PLASTIC LAMINATE MILLWORK: AWI CUSTOM GRADE. PLASTIC LAMINATE TO BE FORMICA, COLOR 933-58 MISSION WHITE WITH HEAVY-DUTY EDGE BAND AT ALL EXPOSED EDGES.
PLASTIC LAMINATE COUNTERTOP: AWI CUSTOM GRADE. PLASTIC LAMINATE TO BE FORMICA, COLOR 933-58 MISSION WHITE WITH HEAVY-DUTY EDGE BAND AT ALL EXPOSED EDGES.

HARDWARE:
1. GROMMET FOR CABLE PASSAGE THROUGH COUNTERTOP: 3" OD BLACK MOLDED PLASTIC GROMMET AND MATCHING PLASTIC CAPS WITH SLOT FOR WIRE PASSAGE. DOUG MOCKETT & CO. EDP SERIES OR EQUAL.

ELECTRICAL NOTES:
1. ELECTRICAL DESIGN IS BY DESIGN-BUILD SUBCONTRACTOR.
2. PROVIDE POWER RECEPTACLES AT ALL COMPUTER AND OFFICE EQUIPMENT LOCATIONS. PROVIDE EMERGENCY POWER AT LOCATIONS REQUESTED BY HOSPITAL.
3. PROVIDE ROUGH-IN FOR VOICE/DATA AT ALL COMPUTER AND OFFICE EQUIPMENT LOCATIONS TO INCLUDE: 1 GANG BACKBOX LOCATED AT 18" AFF WITH 3/4" CONDUIT STUBBED ABOVE THE CEILING. A RUBBER GASKET AND PULL STRING ARE NEEDED AT ALL BACKBOXES.
4. PROVIDE FIRE ALARM NOTIFICATION DEVICES, EXIT AND EMERGENCY LIGHTING PER CODE.

FIRE SUPPRESSION NOTES:
1. MODIFY/ADJUST EXISTING SPRINKLER SYSTEM AS NECESSARY TO PROVIDE FIRE SUPPRESSION PER NFPA 13.

REV.	DESCRIPTION	DATE
0	ISSUED FOR CONSTRUCTION	11-2-12

ISSUED FOR CONSTRUCTION
11/2/12

CURRENT ISSUE STATUS:

PROJECT NORTH

DESIGN GROUP COLLABORATIVE
ARCHITECTURE DESIGN + PLANNING
22 FREE STREET
PORTLAND, MAINE 04101
(207) 699-3300

MAINE MEDICAL CENTER
DISPATCH RENOVATIONS
PORTLAND, MAINE

REMOVALS, FLOOR PLAN,
DETAILS AND SCHEDULES

SHEET TITLE:	DATE:	GRAPHIC SCALE:
	11/2/12	0'
SCALE:	AS NOTED	
PROJECT NO.:	122010	SHEET No.:
DRAWN BY:	CFG	AE 100
A/E OF RECORD:	CFG	