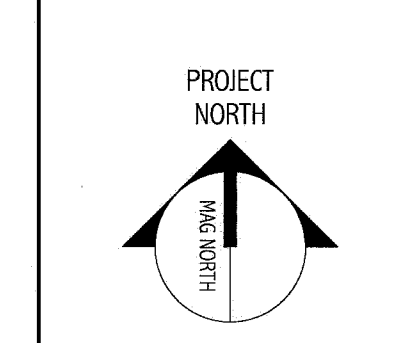
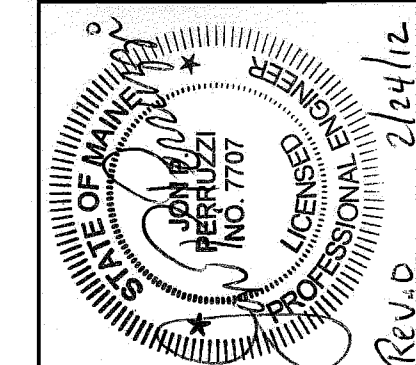
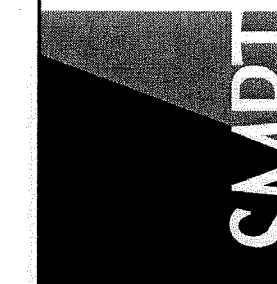


NOTES:

- SEE E-001 FOR LEGEND, ABBREVIATIONS AND GENERAL NOTES.
- REFER TO SIEMENS INSTALLATION DRAWINGS, PROJECT #1102468, FOR ADDITIONAL INFORMATION.

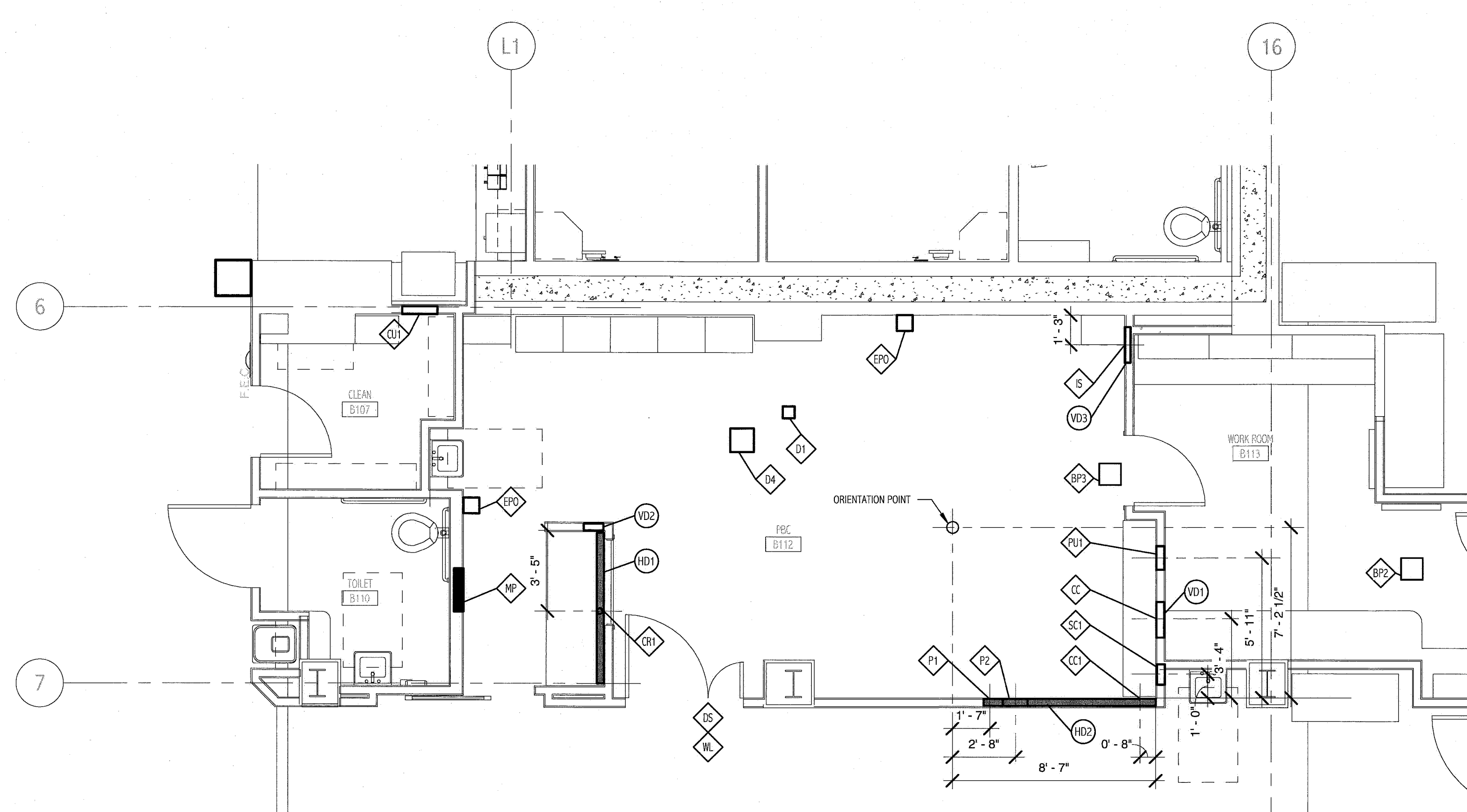
144 Free Street/P.O. Box 618
Portland, Maine 04104
Tel: (207) 772-3866
Fax: (207) 772-1070
www.smriti.com

ARCHITECTURE
ENGINEERING
PLANNING
INTERIOR DESIGN
COMMISSIONING



DEVICE REQUIREMENTS FOR PBC ROOM

ITEM #	THE ELECTRICAL CONTRACTOR IS TO PROVIDE (UNLESS NOTED OTHERWISE)
BP1	PULLBOX, SIZE AS REQUIRED, MOUNTED ABOVE CEILING. PROVIDE REMOVABLE BOTTOM COVER. FOR BOV CABLING.
BP2	PULLBOX, SIZE AS REQUIRED, MOUNTED ABOVE CEILING. PROVIDE REMOVABLE BOTTOM COVER. FOR BOV CABLING.
CO	18" x 8" BUSHED OPENING IN VERTICAL DUCT "VD1" COVER AT THE FLOOR LINE.
CC	10 1/2" x 6" BUSHED OPENING IN TOP OF HORIZONTAL DUCT "HD2".
CD	3" DIAMETER BUSHED OPENING IN TOP OF HORIZONTAL DUCT "HD1".
CU	18"W x 18"L x 4"D PULLBOX MOUNTED FLUSH IN FINISHED WALL BEHIND KLIVER COOLING UNIT. PROVIDE REMOVABLE FRONT COVER WITH 4" DIAMETER BUSHED OPENING FOR CABLE EXT. LOCATION DETERMINED BY CONTRACTOR.
DB	PULLBOX, SIZE AS REQUIRED, MOUNTED ABOVE CEILING IN LOCATION COORDINATED WITH STERIS ROOM. PROVIDE REMOVABLE BOTTOM COVER WITH 4" DIAMETER CONDUIT FROM BOX TO FLUSH WITH CEILING. PROVIDE BUSHING AT CEILING LINE.
DA	12"W x 12"L x 8"D PULLBOX MOUNTED FLUSH IN CEILING. PROVIDE REMOVABLE BOTTOM COVER WITH 3" DIAMETER BUSHED OPENING IN THE CENTER. NOTE: THIS BOX MUST BE SIZED SUCH THAT A 6" x 6" x 3" SIEMENS POWER DISTRIBUTION BOX CAN BE INSTALLED INSIDE THIS PULLBOX. COORDINATE LOCATION WITH STERIS ROOM.
DS	DOOR LIMIT SWITCH, 120V, 5A RATED SWITCH CONTACTS TO OPEN WHEN DOOR IS OPEN. MOUNT IN UPPER CORNER ON STRIKE SIDE OF MAIN ENTRY DOOR.
EPO	EMERGENCY OFF PUSHBUTTONS WITH 2 NORMALLY CLOSED CONTACTS AND GUARD. ALLEN-BRADLEY PART # 800T-F16AS WITH 800T-N129 GUARD IN NEMA 1 SURFACE MOUNTED ENCLOSURE OR EQUAL.
S	4" DIAMETER BUSHED OPENING IN VERTICAL DUCT "VD3" AT FLOOR LINE.
M2	480VOLT, 125AMP, 3 PHASE MAIN BREAKER PANEL WITH UNDERVOLTAGE TRIP COIL AND GROUND BAR. PROVIDE 2 BRANCH BREAKERS, ONE 100AMP, 3 POLE AND ONE 50AMP, 3 POLE. UNDERVOLTAGE TRIP COIL SHALL BE WIRED IN SERIES WITH THE EPO SWITCHES.
P1	10" x 3 1/2" BUSHED OPENING AT THE END OF HORIZONTAL DUCT "HD2" WHERE SHOWN.
P2	PULLBOX, SIZE AS REQUIRED, MOUNTED FLUSH IN WALL ABOVE AND CONNECTING TO HORIZONTAL DUCT "HD2". FOR COOLING HOSES.
PU1	PULLBOX, SIZE AS REQUIRED, MOUNTED FLUSH IN WALL AT FLOOR LINE WITH REMOVABLE FRONT COVER AND 4" DIAMETER BUSHED OPENING AT BOTTOM OF COVER.
ST	PULLBOX, SIZE AS REQUIRED, MOUNTED FLUSH IN WALL AT FLOOR LINE WITH REMOVABLE FRONT COVER AND 4" DIAMETER BUSHED OPENING AT BOTTOM OF COVER.
WL	WARNING LIGHT. PROVIDE SURFACE MOUNTED X-RAY ON FIXTURE ABOVE DOOR. X-RAY ON LIGHT SHALL BE SURE-LITES LPX6-G8 OR EQUAL.
HD1	10"W x 3 1/2"D HORIZONTAL WALL DUCT SURFACE MOUNTED AT FLOOR LINE. PROVIDE REMOVABLE FRONT COVER WITH OPENINGS AS SHOWN. PROVIDE DIVIDERS TO SEPARATE POWER AND SIGNAL CABLING. CONNECT TO VERTICAL DUCT "VD2" WHERE SHOWN.
HD2	10"W x 3 1/2"D HORIZONTAL WALL DUCT FLUSH MOUNTED IN WALL AT FLOOR LINE. PROVIDE REMOVABLE FRONT COVER WITH OPENINGS AS SHOWN. PROVIDE 3 DIVIDERS TO SEPARATE COOLING HOSES, POWER AND SIGNAL CABLING. CONNECT TO PULLBOX "P2" WHERE SHOWN.
VD1	18"W x 3 1/2"D VERTICAL DUCT MOUNTED FLUSH IN WALL. PROVIDE REMOVABLE FRONT COVER WITH OPENINGS AS SHOWN. PROVIDE DIVIDERS TO SEPARATE POWER AND SIGNAL CABLING. BEGIN DUCT AT FLOOR LINE AND EXTEND UP WALL TO ABOVE FINISHED CEILING.
VD2	10"W x 3 1/2"D VERTICAL DUCT MOUNTED FLUSH IN WALL. PROVIDE REMOVABLE FRONT COVER WITH OPENINGS AS SHOWN. PROVIDE DIVIDERS TO SEPARATE POWER AND SIGNAL CABLING. BEGIN DUCT AT FLOOR LINE AND EXTEND UP WALL TO ABOVE FINISHED CEILING.
VD3	10"W x 3 1/2"D VERTICAL DUCT MOUNTED FLUSH IN WALL. PROVIDE REMOVABLE FRONT COVER WITH OPENINGS AS SHOWN. PROVIDE DIVIDERS TO SEPARATE POWER AND SIGNAL CABLING. BEGIN DUCT AT FLOOR LINE AND EXTEND UP WALL TO ABOVE FINISHED CEILING.



**ELECTRICAL DEVICE AND DIMENSION
PLAN - BASEMENT FLOOR**
1/4" = 1'-0"

MAINE MEDICAL CENTER
HOLDING, RADCU & PBC RENOVATION
ISSUED FOR CONSTRUCTION
02.24.12

REV	DATE	DESCRIPTION
0	2.24.12	ISSUED FOR CONSTRUCTION

GRAPHIC SCALE:
1" = 1'-0"

SCALE: As indicated

PROJECT MANAGER: DIV
DRAWN BY: CDS
DATE OF RECORD: JPP
PROJECT NO.: 11063
DATE: 2.24.12

SHEET TITLE:
**ELECTRICAL DEVICE AND DIMENSION
PLAN - BASEMENT FLOOR**

SHEET NO.: EP401