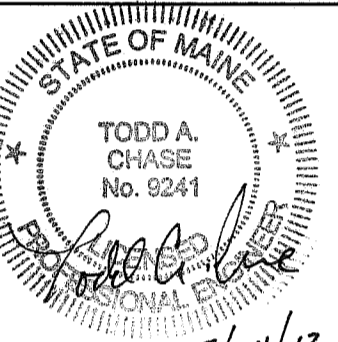


NOTE:

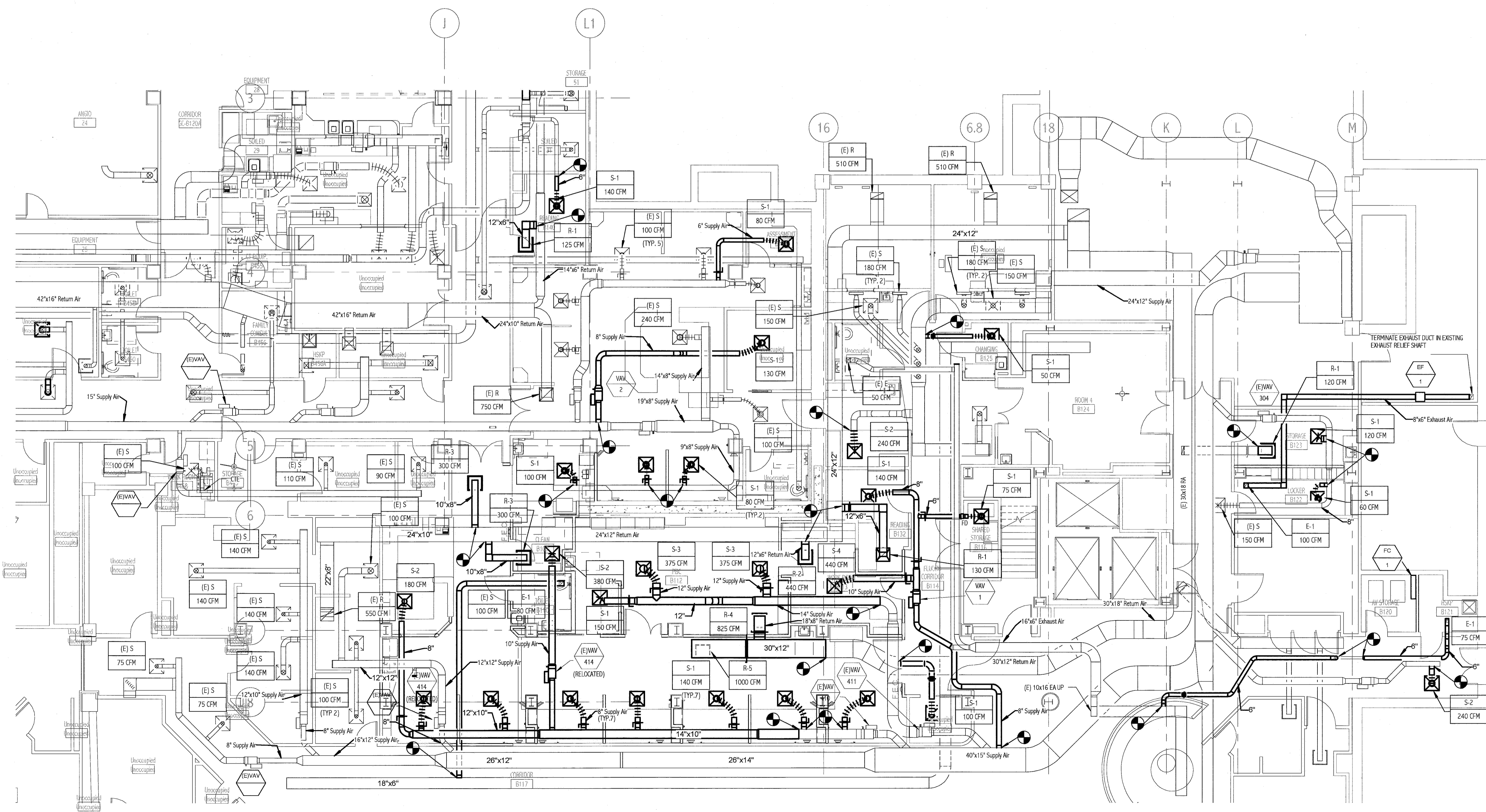
1. SEE M-001 FOR LEGEND, ABBREVIATIONS AND GENERAL NOTES.

144 Elm Street P.O. Box 618
Portland, Maine 04104
Tel: (207) 775-5866
Fax: (207) 772-1070
www.smrtinc.com

ARCHITECTURE
ENGINEERING
PLANNING
INTERIOR DESIGN
COMMISSIONING



2/21/12



1 BASEMENT LEVEL DUCTWORK PLAN
1/8" = 1'-0"

MAINE MEDICAL CENTER
HOLDING, RADCU & PBC RENOVATION
PORTLAND, ME
ISSUED FOR CONSTRUCTION
02.24.12
CURRENT ISSUE STATUS: DATE

REV	DESCRIPTION	DATE
0	ISSUED FOR CONSTRUCTION	2.24.12

GRAPHIC SCALE:
0' 1'

SCALE: 1/8" = 1'-0"

PROJECT MANAGER: DIV

K/DRAWN BY: BAL

A/E OF RECORD: TAC

PROJECT NO: 11063

DATE: 02.24.12

SHEET TITLE:
BASEMENT LEVEL
HVAC DUCTWORK
PLAN

SHEET No.
MH101