

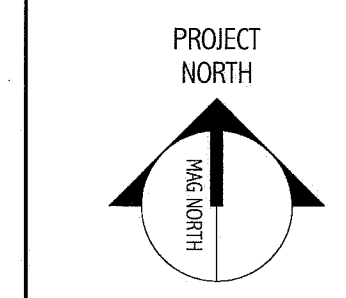
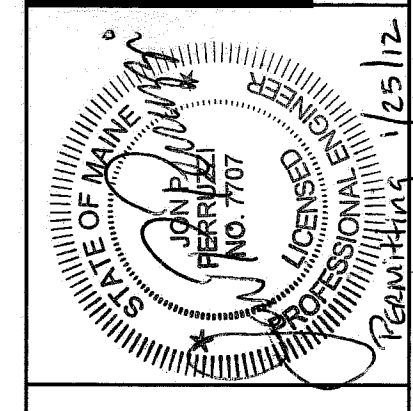
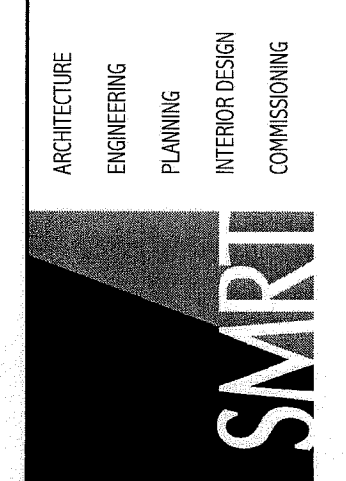
GENERAL NOTES:

1. SEE SHEET E-001 FOR LEGEND AND GENERAL NOTES.

KEYED NOTES:

- 1. RELOCATED DEVICE. SEE DEMO PLAN ON E-101 FOR EXISTING LOCATION.
- 2. INSTALL 48" AFF.
- 3. INSTALL 60" AFF.
- 4. PROVIDE CONNECTION AT CEILING TO STERIS LIGHT FIXTURE HEAD. ALSO PROVIDE 3/4" CONDUIT FROM FIXTURE HEAD TO STERIS WALL MOUNTED CONTROLLER. COORDINATE WITH OWNER FOR CONTROLLER LOCATION.
- 5. PROVIDE CONNECTION AT CEILING TO PATIENT LIFT. COORDINATE EXACT LOCATION WITH EQUIPMENT.
- 6. INSTALL PATIENT CARE CONSOLE AT THE FOOT END OF THE SIEMENS TABLE. PROVIDE AN ORANGE LS-15R RECEPTACLE AND A LOW VOLTAGE SINGLE GANG BOX THAT WILL ACCOMMODATE (1) VGA PASS THROUGH CONNECTOR, (2) CAT 6 RJ-45 AND (1) CAT 7 CONNECTORS. INSTALL OVER FLOOR DUCT "FD2". PROVIDE BUSHED OPENINGS IN F02 TO ACCOMMODATE CABLES.
- 7. "TOMBSTONE" STYLE FLOOR RECEPTACLE.
- 8. PROVIDE 5 GANG MASONRY BOX FOR SYSTEMS CLOSK.
- 9. DATA FOR CLINICAL ENGINEERING.
- 10. PROVIDE 2 GANG LOW VOLTAGE MOUNTING RING AT 18" AFF. THE LEFT SID SHALL ACCOMMODATE (2) VGA BULKHEAD CONNECTORS AND (4) RJ-45 DATA CONNECTORS. THE RIGHT SIDE SHALL BE FITTED WITH A BLANK PLATE. CABLES SHALL BE ROUTED VIA THE WALL AND FLOOR DUCTS. PROVIDE A 1 1/2" CONDUIT FROM THE MOUNTING RING TO ABOVE ACCESSIBLE CEILING.
- 11. PROVIDE A SINGLE GANG LOW VOLTAGE MOUNTING RING IN PROXIMITY TO THE MULTI-MODALITY SWITCH. THE MOUNTING RING SHALL ACCOMMODATE (1) VGA BULKHEAD CONNECTOR AND (1) RJ-45 DATA CONNECTOR.
- 12. INSTALL OWNER SUPPLIED POWER CORD BETWEEN PATIENT CARE CONSOLE RECEPTACLE AND MONITORING DESK RECEPTACLE. AT THE PATIENT CARE CONSOLE, TERMINATE THE CABLE AT THE RECEPTACLE. AT THE MONITORING DESK LOCATION, ROUTE THE CABLE THROUGH THE BUSHED WALL OPENING AND PROVIDE A LS-15P PLUG ON THE END FOR CONNECTION TO RECEPTACLE BELOW DESK.
- 13. RECEPTACLE COLOR AND FACEPLATE SHALL BE ORANGE.

144 Pine Street P.O. Box 618
Portland, Maine 04104
Tel: (207) 772-3846
Fax: (207) 772-1070
www.smrtinc.com



MAINE MEDICAL CENTER
ANGIO SINGLE PLANE - ROOM 2
PORTLAND, ME

ISSUED FOR PERMITTING
01.27.12

CURRENT ISSUE STATUS:

REV	DESCRIPTION	DATE

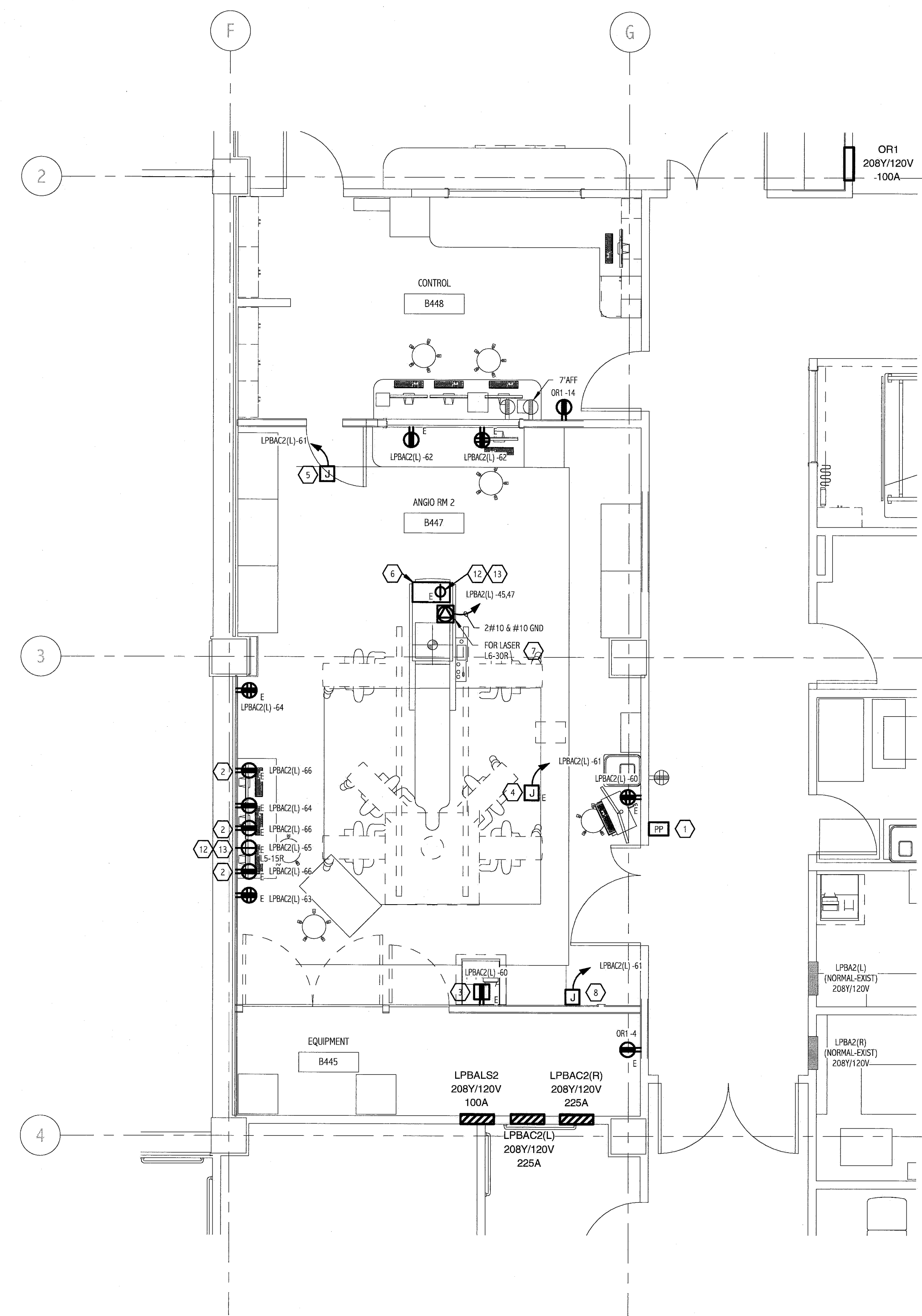
GRAPHIC SCALE:
0" 1"

SCALE: 1/4" = 1'-0"

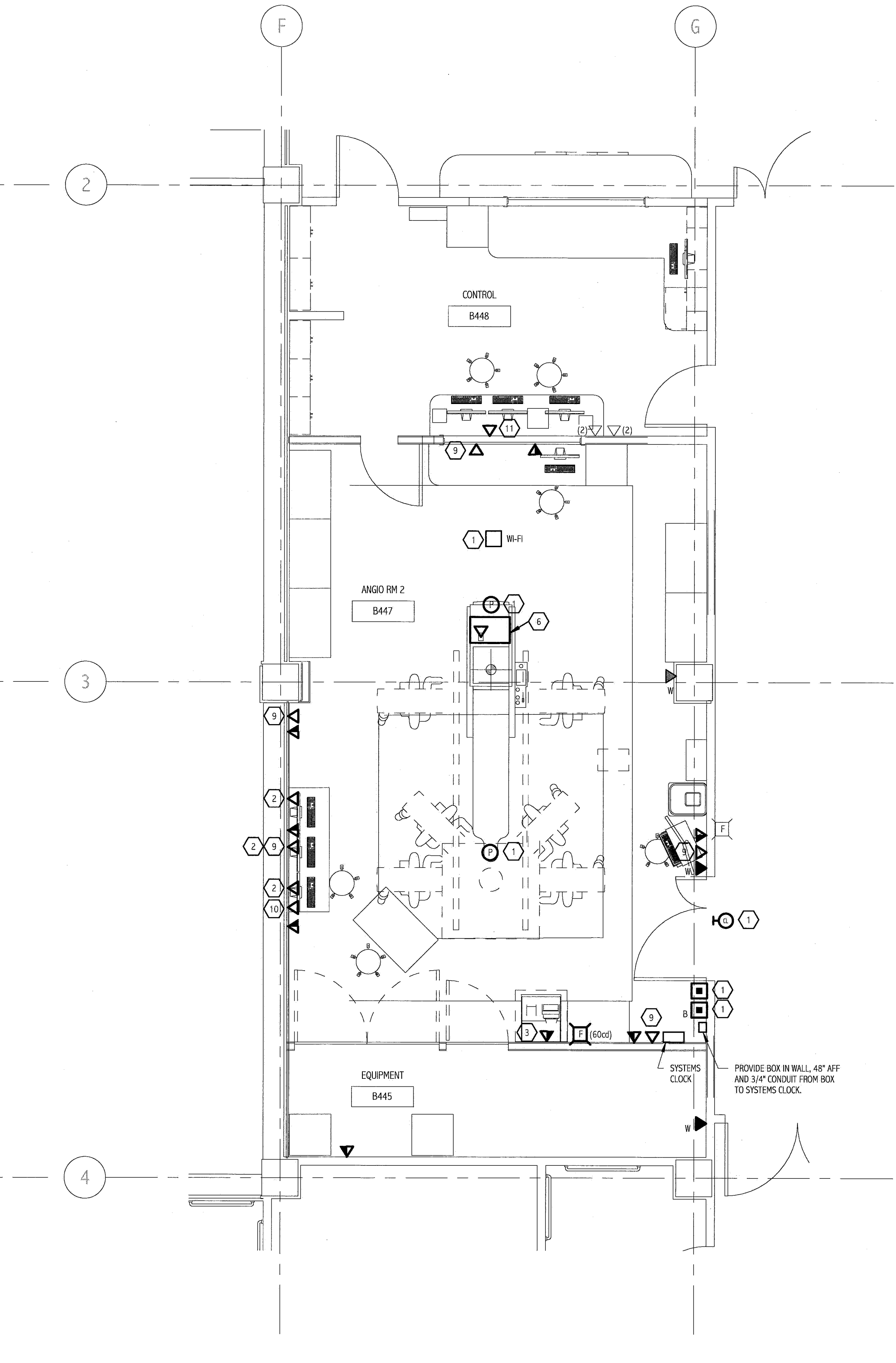
PROJECT MANAGER: DIV
DRAWN BY: CDS
A/E OF RECORD: JPP
PROJECT NO: 11127

DATE:
SHEET TITLE:
**POWER & SYSTEMS
PLANS - BASEMENT
FLOOR**

SHEET No:
E-102



1 ANGIO SUITE POWER - BASEMENT FLOOR
1/4" = 1'-0"



2 ANGIO SUITE SYSTEMS - BASEMENT FLOOR
1/4" = 1'-0"