

ABBREVIATIONS:

AB ANCHOR BOLT	AC AIR CONDITIONING	ACCU ACCUSTICAL PLASTER	ACT ACUSTIC CEILING TILE	AFV ABOVE FINISH FLOOR	AGG AGGREGATE	ALT ALTERNATE	AP ACCESS PANEL	APPROX APPROXIMATE	ARCH ARCHITECTURAL	BOX BOTTOM CORD EXTENSION	BD BOARD	BIT BITUMINOUS	BLDG BUILDING	BLP BORROWED LIGHT PANEL	BO BOTTOM OF	BOF BOTTOM OF FOOTING	BOS BOTTOM OF STEEL	BTM BOTTOM	BRDG BRIDGING	BRG BEARING	BSE BOTH SIDES	BSE BRICK SKEW ELEVATION	C CHANNEL	CBM CATCH BASIN / CHALUBOARD	CEM CEMENTITIOUS BACKER BOARD	CFM CUBIC FEET PER MINUTE	CP CAST IN PLACE	CL CONTROL JOINT / CONSTRUCTION JOINT	CL CENTER LINE	CLL CONTRACT LIMIT LINE	CLR CLEAR	CMU CONCRETE MASONRY UNIT	COL COLUMN	CONC CONCRETE	CONT CONTINUOUS	CT CERAMIC TILE	CUH CABINET UNIT HEATER	D DIAMETER	DBL DOUBLE	DF DRINKING FOUNTAIN	DL DEAD LOAD	DR DISPLAY RAIL	DTL DETAIL	DW DRAIN	DWG DRAWING	EA EACH	EF EXHAUST FAN / EACH FACE	EJ EXPANSION JOINT	EL ELEVATION	ELEC ELECTRICAL	EOP EDGE OF PAVEMENT	EPDM ETHYLENE PROPYLENE DIENE MONOMER	EQ EQUAL	EW EACH WAY	EWG ELECTRIC WATER COOLER	EXIST EXISTING	EXP EXPANSION	EXT EXTERIOR	FB FLAT BAR	FBO FURNISHED BY OTHERS	FCO FLOOR CLEAR-OUT	FD FLOOR DRAIN	FE FIRE EXTINGUISHER	FEC FIRE EXTINGUISHER CABINET	FF FINISH FLOOR / FAR FACE	FFE FINISH FLOOR ELEVATION	FO FRAMED OPENING	FBR FIBER REINFORCED PLASTIC	FS FAR SIDE	FTG FOOTING	GA GAUGE	GALV GALVANIZED	GB GRAB BAR	GC GENERAL CONTRACTOR	GOT GYPSUM DROP-IN TILE	GV GRAVITY VENT	GWB GYPSUM WALL BOARD	H HORIZONTAL	HC HANDICAPPED / HOLLOW CORE	HE HORIZONTAL	HM HOLLOW METAL	HRI HEAT RECOVERY UNIT	HAV HEATING AND VENTILATING	HVAC HEATING, VENTILATING AND AIR CONDITIONING	I INCLUDED ANGLE	ID INSIDE DIAMETER	IF INSIDE FACE	II ISOLATION JOINT	IMP IMPACT RESISTANT	INS INSULATED	INV INVERT	IS JOINT SUBSTITUTE	K KIPS	L LEFT	LINO LINE	LL LONG LEG HORIZONTAL	LLV LONG LEG VERTICAL	LP LIGHTING PANEL / LIQUIFIED PROPANE	MAX MAXIMUM	MB MARKER BOARD	MDO MEDIUM DENSITY OVERLAY	MEC MECHANICAL	MFR MANUFACTURER	MNM MINIMUM	MIS MISCELLANEOUS	MO MASONRY OPENING	MR MOISTURE-RESISTANT	MUA MAKE-UP AIR	N NOSING	NB NEW CATCH BASIN	NDB NEW DRAIN MANHOLE	NEM NEW FORCE MAIN	NIC NOT IN CONTRACT	NS NEAR SIDE	NSS NEW STORM DRAIN LINE	NST NEW SANITARY SEWER LINE	NIS NOT TO SCALE	NW NEW WATER LINE	OC ON CENTER	OF OUTSIDE FACE	OH OVERHEAD	PA PUBLIC ADDRESS	PAP POWER-ACTUATED FASTENER	POU POOL DEPTH MODIFICATION UNIT	PL PLATE / PROPERTY LINE	PLM PLASTIC LAMINATE	PLF POUNDS PER LINEAR FOOT	PP POWER PANEL	PSF POUNDS PER SQUARE FOOT	PSI POUNDS PER SQUARE INCH	PT PRESSURE-TREATED	PVC POLYVINYL CHLORIDE	PVMT PAVEMENT	R RISER / RADIUS	RB RESILIENT BASE	RD ROOF DRAIN	RENF REINFORCED	REQD REQUIRED	RT RIGHT	RO ROUGH OPENING	ROW RIGHT OF WAY	RR RUB-RAIL	RTU ROOF TOP UNIT (HVAC)	SACCT SUSPENDED ACOUSTIC TILE CEILING	SC SOLID CORE	SF SQUARE FOOT / SUPPLY FAN	SFPM SPRAVED FIRE-RESISTIVE MATERIAL	SHT SHEET	SIM SIMILAR	SK SKEW KEY	SN SANITARY NAPION (DISPENSER)	SP SPECIAL	SS STAINLESS STEEL	STA STATION	STL STEEL	STRUC STRUCTURAL	T TREAD	TB TACKBOARD	T&B TOP AND BOTTOM	TBM TEMPORARY BENCHMARK	TCE TOP CHORD EXTENSION	TI TIE JOINT	TO TOP OF	TOC TOP OF CONCRETE	TOF TOP OF FOOTING	TOM TOP OF MASONRY	TOP TOP OF PIER	TOS TOP OF STEEL	TOW TOP OF WALL	TP TOILET PAPER (DISPENSER) / TEST PIT	TS TUBE STEEL	TYP TYPICAL	UH UNIT HEATER	UNO UNLESS NOTED OTHERWISE	V VENT PIPE / VERTICAL	VB VAPOR BARRIER	VCT VINYL COMPOSITION TILE	VERT VERTICAL	VP VISION PANEL	VTR VENT THROUGH THE ROOF	W WITH	WC WATER CLOSET	WF WIDE FLANGE	WH WATER HEATER	W/O WITHOUT	WP WORKING POINT	WS WEB STIFFENER	WWF WELDED WIRE FABRIC
----------------	---------------------	-------------------------	--------------------------	------------------------	---------------	---------------	-----------------	--------------------	--------------------	---------------------------	----------	----------------	---------------	--------------------------	--------------	-----------------------	---------------------	------------	---------------	-------------	----------------	--------------------------	-----------	------------------------------	-------------------------------	---------------------------	------------------	---------------------------------------	----------------	-------------------------	-----------	---------------------------	------------	---------------	-----------------	-----------------	-------------------------	------------	------------	----------------------	--------------	-----------------	------------	----------	-------------	---------	----------------------------	--------------------	--------------	-----------------	----------------------	---------------------------------------	----------	-------------	---------------------------	----------------	---------------	--------------	-------------	-------------------------	---------------------	----------------	----------------------	-------------------------------	----------------------------	----------------------------	-------------------	------------------------------	-------------	-------------	----------	-----------------	-------------	-----------------------	-------------------------	-----------------	-----------------------	--------------	------------------------------	---------------	-----------------	------------------------	-----------------------------	--	------------------	--------------------	----------------	--------------------	----------------------	---------------	------------	---------------------	--------	--------	-----------	------------------------	-----------------------	---------------------------------------	-------------	-----------------	----------------------------	----------------	------------------	-------------	-------------------	--------------------	-----------------------	-----------------	----------	--------------------	-----------------------	--------------------	---------------------	--------------	--------------------------	-----------------------------	------------------	-------------------	--------------	-----------------	-------------	-------------------	-----------------------------	----------------------------------	--------------------------	----------------------	----------------------------	----------------	----------------------------	----------------------------	---------------------	------------------------	---------------	------------------	-------------------	---------------	-----------------	---------------	----------	------------------	------------------	-------------	--------------------------	---------------------------------------	---------------	-----------------------------	--------------------------------------	-----------	-------------	-------------	--------------------------------	------------	--------------------	-------------	-----------	------------------	---------	--------------	--------------------	-------------------------	-------------------------	--------------	-----------	---------------------	--------------------	--------------------	-----------------	------------------	-----------------	--	---------------	-------------	----------------	----------------------------	------------------------	------------------	----------------------------	---------------	-----------------	---------------------------	--------	-----------------	----------------	-----------------	-------------	------------------	------------------	------------------------

SYMBOL LEGEND:

	BUILDING SECTION
	WALL SECTION
	DETAIL
	EXTERIOR ELEVATION
	INTERIOR ELEVATION
	LEVEL LINE
	KEY NOTE
	EQUIPMENT ACCESSORY TAG
	WINDOW TAG
	PARTITION TAG
	DOOR TAG
	ROOM NAME ROOM NUMBER
	COLUMN BUBBLE & CENTERLINE
	BACKER ROD & SEALANT

Room name
101

View Name
1/8" = 1'-0"

APPLICABLE CODES:

- GENERALS:**
- INTERNATIONAL BUILDING CODE (IBC); 2009 EDITION
 - NATIONAL FIRE PROTECTION ASSOCIATION (NFPA 101); 2010 EDITION
 - ACCESSIBILITY GUIDELINES FOR BUILDINGS AND FACILITIES (ADA); 1994 EDITION
 - AIA GUIDELINES FOR DESIGN AND CONSTRUCTION OF HOSPITAL AND HEALTHCARE FACILITIES; 2010 EDITION
- PLUMBING:**
- NFPA 13: INSTALLATION OF SPRINKLER SYSTEMS; 2002
 - STATE OF MAINE INTERNAL PLUMBING CODE; 2005
- HVAC:**
- MECHANICAL CODE: INTERNATIONAL MECHANICAL CODE; 2003 EDITION
 - NFPA 99 HEALTHCARE FACILITIES; 2002 EDITION
 - ENERGY CODE: ASHRAE 90.1; 2001 EDITION WITH AMENDMENTS
 - ASHRAE 62; 2001 EDITION
 - FIRE AND SMOKE DAMPER INSTALLATION: NFPA 90A AND NFPA 10; 2003 EDITION
 - DUCT MOUNTED SMOKE DETECTORS: NFPA 72 EDITION
- ELECTRICAL:**
- NFPA 70; 2005 EDITION
 - NFPA 72; 2003 EDITION
 - IESNA LIGHTING HANDBOOK REFERENCE AND APPLICATION, 9th EDITION

GENERAL NOTES:

- FIELD VERIFY ALL DIMENSIONS AND LAYOUT PRIOR TO PROCEEDING WITH WORK. NOTIFY ARCHITECT IN WRITING OF ANY DISCREPANCIES OR INCONSISTENCIES. FAILURE TO REPORT ANY DISCREPANCIES WITHIN THESE CONSTRUCTION DOCUMENTS TO THE ARCHITECT WILL NOT BE GROUNDS FOR ADDITIONAL COST OR CHANGE ORDERS.
- THE CONTRACTOR SHALL BE RESPONSIBLE FOR PROVIDING ALL MATERIALS (UNLESS NOTED OTHERWISE), AND WORKMANSHIP IN ACCORDANCE WITH FEDERAL, STATE, CITY, AND LOCAL BUILDING CODES AND THEIR REQUIREMENTS.
- CONTRACTOR TO CONFIRM EXISTING WALL RATINGS.
- THE CONTRACTOR AND ALL TRADES SHALL NOTE REQUIREMENTS OF "GENERAL NOTES" ON ALL SHEETS.
- EACH TRADE TO PROVIDE SMOKE OR FIRE SEALANT AT PENETRATIONS AS REQUIRED FOR WALL TYPE. ALL SEALANT, FIRE STOPPING, AND SMOKE STOPPING ASSEMBLIES SHALL BE U.L. RATED.
- DIMENSIONS ARE FACE OF CONCRETE, FACE OF MASONRY, FACE OF EXISTING PARTITION AND CENTERLINE OF STUD PARTITIONS, UNLESS INDICATED OTHERWISE.
- REFER TO ALL CONSTRUCTION DOCUMENTS FOR REQUIREMENTS WHICH MAY AFFECT THE WORK IN ANOTHER DISCIPLINE AND COORDINATE WORK.
- REFER TO DETAILS FOR ADDITIONAL DIMENSIONAL INFORMATION.
- DOOR JAMBS SHALL BE LOCATED 6" FROM CORNER IN STUD PARTITIONS AND 8" FROM CORNER IN MASONRY PARTITIONS UNLESS INDICATED OTHERWISE.
- PROVIDE BLOCKING IN WALLS AS NECESSARY WHERE CASEWORK, SHELVES, HANDRAILS, AND MISC. EQUIPMENT ARE LOCATED.
- PATCH ALL HOLES, WALLS AND CRACKS IN ROOMS TO RECEIVE NEW PAINT.
- ANY EXISTING WALLS THAT ARE FOUND TO BE UNBRACED OR DO NOT EXTEND TO BOTTOM OF DECK/SLAB SHOULD BE BRACED BACK TO STRUCTURE. WHEN PRIVACY IS AN ISSUE EXTEND WALL TO BOTTOM OF DECK/SLAB.
- DO NOT SCALE DRAWINGS.
- "PROVIDE" MEANS "FURNISH AND INSTALL."



MAINE MEDICAL CENTER

BRAMHALL CAMPUS: PORTLAND, MAINE
ANGIO SINGLE PLANE - ROOM 2

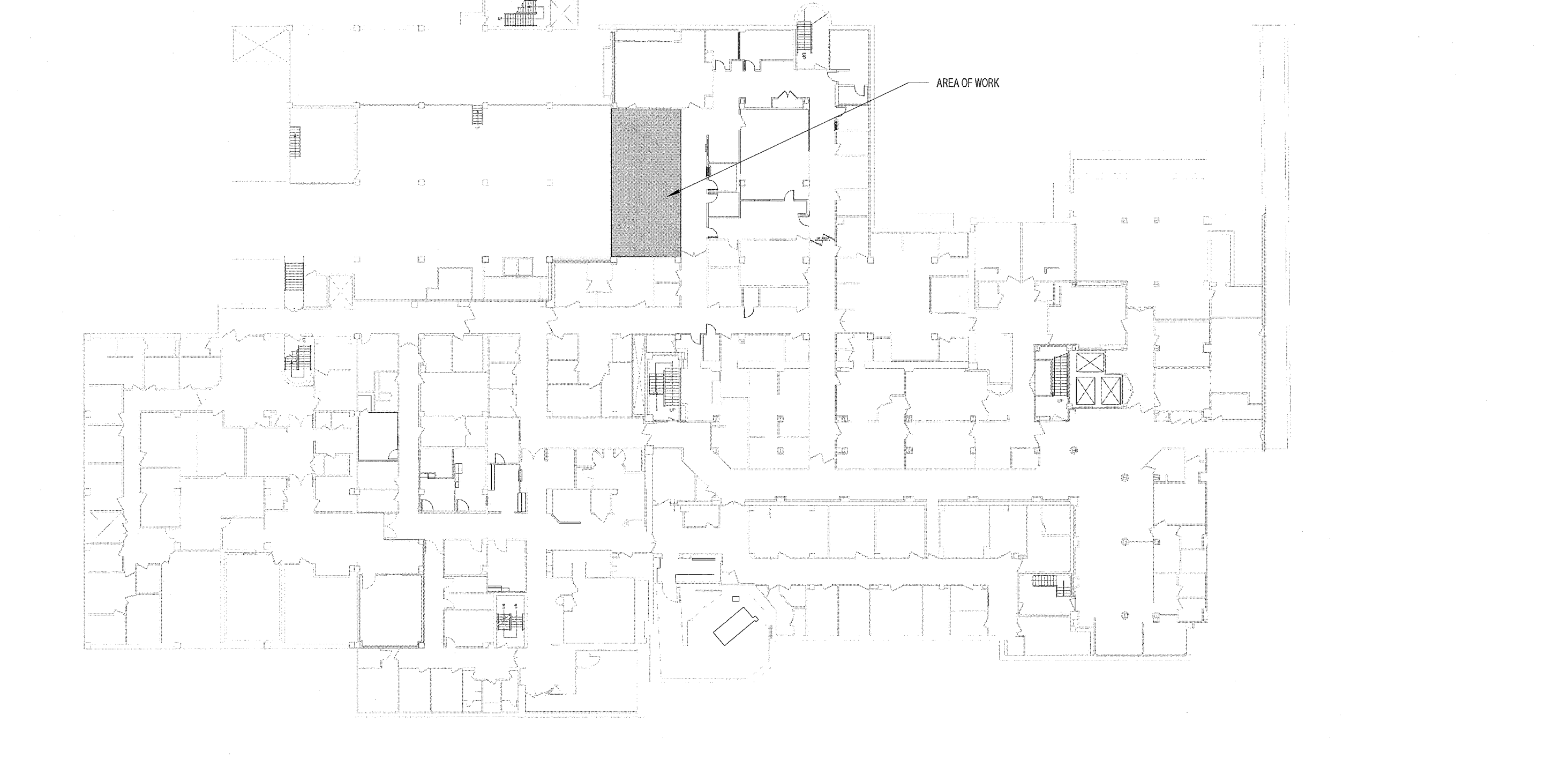
Sheet Number	Sheet Name	Issue Status	Issue Date
G-001	GENERAL INFORMATION		
A-101	BASEMENT DEMOLITION AND FLOOR PLAN		
A-102	LAYOUT PLAN, REFLECTED CEILING PLAN & DETAILS		
A-200	INTERIOR ELEVATIONS		
A-601	DOOR SCHEDULE & DETAILS		

Sheet Number	Sheet Name	Issue Status	Issue Date
SF-101	ANGIO FOUNDATION AND FRAMING PLANS		
SF-501	STRUCTURAL DETAILS		

Sheet Number	Sheet Name	Issue Status	Issue Date
M-001	LEGEND AND ABBREVIATIONS		
M-002	MECHANICAL LEGEND AND SPECIFICATIONS		
MH101	ANGIO SUITE DUCTWORK PLANS - BASEMENT FLOOR		
MP101	ANGIO SUITE HVAC PIPING PLANS - BASEMENT FLOOR		
M-501	MECHANICAL DETAILS		
M-601	MECHANICAL SCHEDULES		

Sheet Number	Sheet Name	Issue Status	Issue Date
PL001	LEGEND AND ABBREVIATIONS		
PL101	ANGIO SUITE PLUMBING SUPPLY PIPING PLANS - BASEMENT FLOOR		
PL102	ANGIO SUITE DOMESTIC WATER PIPING PLANS - BASEMENT FLOOR		
PL601	PLUMBING SCHEDULES		

Sheet Number	Sheet Name	Issue Status	Issue Date
E-001	LEGEND AND GENERAL NOTES		
E-002	ANGIO SPECIFICATION SHEET 1		
E-003	ANGIO SPECIFICATION SHEET 2		
E-101	ANGIO SUITE ELECTRICAL DEMO PLANS - BASEMENT FLOOR		
E-102	POWER & SYSTEMS PLANS - BASEMENT FLOOR		
EP401	ANGIO ELECTRICAL DEVICE AND DIMENSION PLAN - BASEMENT FLOOR		
EP402	ANGIO ELECTRICAL RACEWAY PLAN - BASEMENT FLOOR		
EP601	PANEL SCHEDULES AND PARTIAL ONE-LINE DIAGRAM		



1 BASEMENT LEVEL: BRAMHALL CAMPUS
1/32" = 1'-0"

PARTITION LEGEND:

Symbol	Description	Diagram
	FURRING PARTITION -7/8" METAL HAT SECTION 24" O.C. TO DECK -(1) LAYER 5/8" GWB TO DECK	
	FURRING PARTITION -3 5/8" 25 GA. STEEL STUDS @ 24" O.C. TO DECK -(1) LAYER 5/8" INTERIOR GYPSUM BOARD TO DECK, TAGGED SIDE	
	SOUND ATTENUATED PARTITION: STC 45 -(1) LAYER 5/8" INTERIOR GYPSUM BOARD TO DECK -3 5/8" 25 GA. STEEL STUDS @ 24" O.C. TO DECK U.N.O. -FULL BATT INSULATION -(1) LAYER 5/8" INTERIOR GYPSUM BOARD TO DECK -SEAL ALL PENETRATIONS FOR SOUND.	
	-(1) LAYER 5/8" INTERIOR GYPSUM BOARD TO 6" ABOVE CEILING -3 5/8" 25 GA. STEEL STUDS @ 24" O.C. TO DECK U.N.O. -FULL BATT INSULATION -(1) LAYER 5/8" INTERIOR GYPSUM BOARD TO 6" ABOVE CEILING	
	VERIFY EXISTING LEAD LINED GWB THICKNESS TO BE 1/16" OR GREATER. IF LESS THAN 1/16", UPGRADE WALL TO CONTAIN 1/16" LEAD LINING TO 7'-0" AFF.	
	SUBSTITUTE TAGGED SIDE GWB FOR 1/16" LEAD LINED GWB TO 7'-0" AFF.	

1 PARTITION LEGEND ANGIO
3/4" = 1'-0"

147 Pine Street, 6th Fl., Portland, Maine 04104
Tel: (207) 772-3686 Fax: (207) 772-1071 www.mmc.com

ARCHITECTURE
ENGINEERING
PLANNING
INTERIOR DESIGN
COMMISSIONING

SMART

LICENSED ARCHITECT
DEREK J. VELLEUX
No. 3185
STATE OF MAINE
1.2.2.12

PROJECT NORTH

MAINE MEDICAL CENTER
ANGIO SINGLE PLANE - ROOM 2
PORTLAND, ME

ISSUED FOR PERMITTING
01.27.12

GRAPHIC SCALE:
0" 1"

SCALE: As indicated

PROJECT MANAGER: DIV
DRAWN BY: ART
AVE OF RECORD: DIV
PROJECT NO: 11127
DATE: XX.XX.XX

SHEET TITLE:
GENERAL INFORMATION

SHEET No: **G-001**