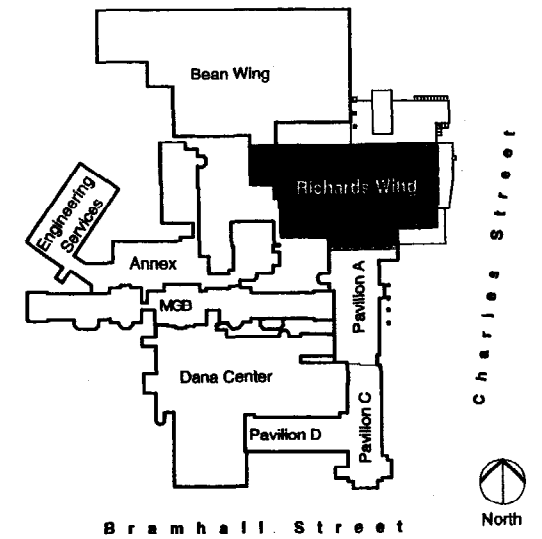


# Richards Wing

## Sixth Floor Renovations

Maine Medical Center  
 Portland, Maine 04102



Project Location Diagram

### Architect

Winton Scott Architects, PA  
 5 Milk Street  
 Portland, Maine 04101  
 207-774-4811

### Mechanical Engineer

Mechanical Systems Engineers  
 Royal River Center Unit #10  
 10 Forest Falls Drive  
 Yarmouth, Maine 04096  
 207-846-1441

### Abbreviations

AB Anchor Bolt  
 ABV Above  
 ACT Acoustical Ceiling Tile  
 ADJ Adjustable, Adjacent  
 AFF Above Finished Floor  
 AHU Air Handling Unit  
 ALT Alternate  
 ALUM Aluminum  
 AP Access Panel  
 ARCH Architectural  
 @ At  
 B Basement, Base  
 BB Bulletin Board  
 BD Board  
 BET Between  
 BEV Beveled  
 BIT Bituminous  
 BLDG Building  
 BLKG Blotting  
 BM Bush Mark, Beam  
 BOT Bottom  
 BRK Brick  
 C Course  
 CAB Cabinet  
 CAP Capacity  
 CB Chalk Board, Catch Basin  
 CEM Cement  
 CI Cast Iron  
 CJ Control Joint  
 CL Center Line  
 CLG Ceiling  
 CLO Closet  
 C.P. Clear  
 CMT Ceramic Masonry Tile  
 CMU Concrete Masonry Unit

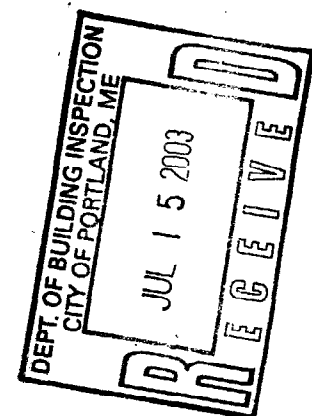
COL Column  
 COMP Compressible  
 CONC Concrete  
 CONST Construction  
 COORD Coordinate  
 OPT Carpet  
 CT Ceramic Tile  
 CTSK Countersunk Screw  
 CUH Cabinet Unit Heater  
 DRL Double  
 DF Drinking Fountain  
 DH Double Hung  
 DIA Diameter  
 DIM Dimension  
 DRW Drawer  
 DTL Detail  
 DW Dishwasher  
 DWG Drawing  
 EA Each  
 EL Elevation  
 ELEC Electrical  
 EQ Equal  
 EQV Exhaust  
 EXIST Existing  
 EXP Expansion  
 EXT Exterior  
 FC Fire Code  
 FCH Furring Channel  
 FD Floor Drain  
 FE Fire Extinguisher  
 FFE Finish Floor Elevation  
 FIN Finished

FL Flush  
 FLR Floor  
 FLSHG Roofing  
 FRF Flexible Sheet Roofing  
 GA Gauge  
 GALV Galvanized  
 GB Grab Bar  
 GC General Contractor  
 GL Glass  
 GWS Gypsum Wall Board  
 GYP BD Gypsum Board  
 HC Handicapped, Hollow Core  
 HDW Hardware  
 HDWD Hardwood  
 HM Hollow Metal  
 HORIZ Horizontal  
 HP High Point  
 HPDL High Pressure Decorative Laminate  
 HR Hour  
 HT Height  
 HTG Heating  
 HW Hot Water  
 ID Inside Diameter  
 INCL Inclusive  
 INT Interior  
 INV Invert  
 IS Inside  
 JC Janitor Closet  
 JT Joint  
 JT Joint  
 KT Kitchen

LAM Laminated  
 LAV Lavatory  
 LF Linear Feet  
 LP Low Point  
 LPL Low Pressure Laminate  
 MAS Masonry  
 MAT Material  
 MAX Maximum  
 MDC Medium Density Overlay  
 MDO Mechanical  
 MFR Manufacturer  
 MH Man Hole  
 MIN Minimum  
 MISC Miscellaneous  
 MLDG Milling  
 MO Masonry Opening  
 MR Moisture Resistant  
 MNTG Mounted, Mounting  
 MTL Metal  
 NAT Natural  
 NIC Not In Contract  
 NO Number  
 NOM Nominal  
 NTS Not To Scale  
 OA Outside  
 OC On Center  
 OD Outside Diameter  
 OH Overhead  
 ORNG Opening  
 OPP Opposite  
 OS Outside

PARTN Partition  
 PB Particle Board  
 PC Plenum  
 PLAM Plastic Laminate  
 PL Plate  
 PLYWD Plywood  
 PPB Pressboard Particle Board  
 PREFN Prefinished  
 PT Pressure Treated  
 PTD Painted  
 QT Quarry Tile  
 R Radon, Riser  
 RAD Radiator  
 RC Resilient Channel  
 RD Road Drain  
 REF Reference  
 REFR Refrigerator  
 REINF Reinforce Reinforcing  
 REQD Required  
 RL Rain Leader  
 RM Room  
 RO Rough Opening  
 RUB Rubber  
 SC Solid Core  
 SECT Section  
 SF Square Feet  
 SHF Shelf  
 SHH Sheath  
 SHTH Sheathing  
 SIM Similar  
 SPECS Specifications  
 SQ Square  
 SST Stainless Steel  
 STD Standard  
 STL Steel  
 STO Storage

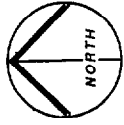
STRUCT Structure, Structural  
 SUP Support  
 SUSP Suspended  
 SYM Symmetrical  
 T Tread  
 TB Tackboard  
 TEMP Tempered  
 THK Thick  
 THR Threshold  
 THRU Through  
 TOC Top of Concrete  
 TOB Top of Steel  
 TP Toilet Paper  
 TR Track Rail  
 TYP Typical  
 TAB Top And Bottom  
 TAG Tongue And Groove  
 UC Undercut  
 UV Unit Ventilator  
 V Vinyl Vent  
 VB Vapor Barrier  
 VCT Vinyl Composition Tile  
 VERT Vertical, Vertically  
 VEST Vestibule  
 VWC Vinyl Wall Covering  
 WB White Board  
 WC Water Closet  
 WD Wood  
 W With  
 WO Without



Release Date: February 25, 2003

### Drawing List

Sheet Name	Number
Phasing Plan	Ph 1
Demolition Plan	D 1
Floor Plan	A 1
Enlarged Floor Plans & Interior Elevations	A 2
Architectural Woodwork	A 3
Reflected Ceiling Plan and Details	A 4
Schedules & Details	A 5
Plumbing Floor Plan / New Work	P 1
Mechanical Demolition Plan	M D 1
Mechanical Floor Plan	M 1
Electrical Floor Plan	E 1
Enlarged Electrical Plans	E 2



**Richards Wing  
Sixth Floor**

Renovations

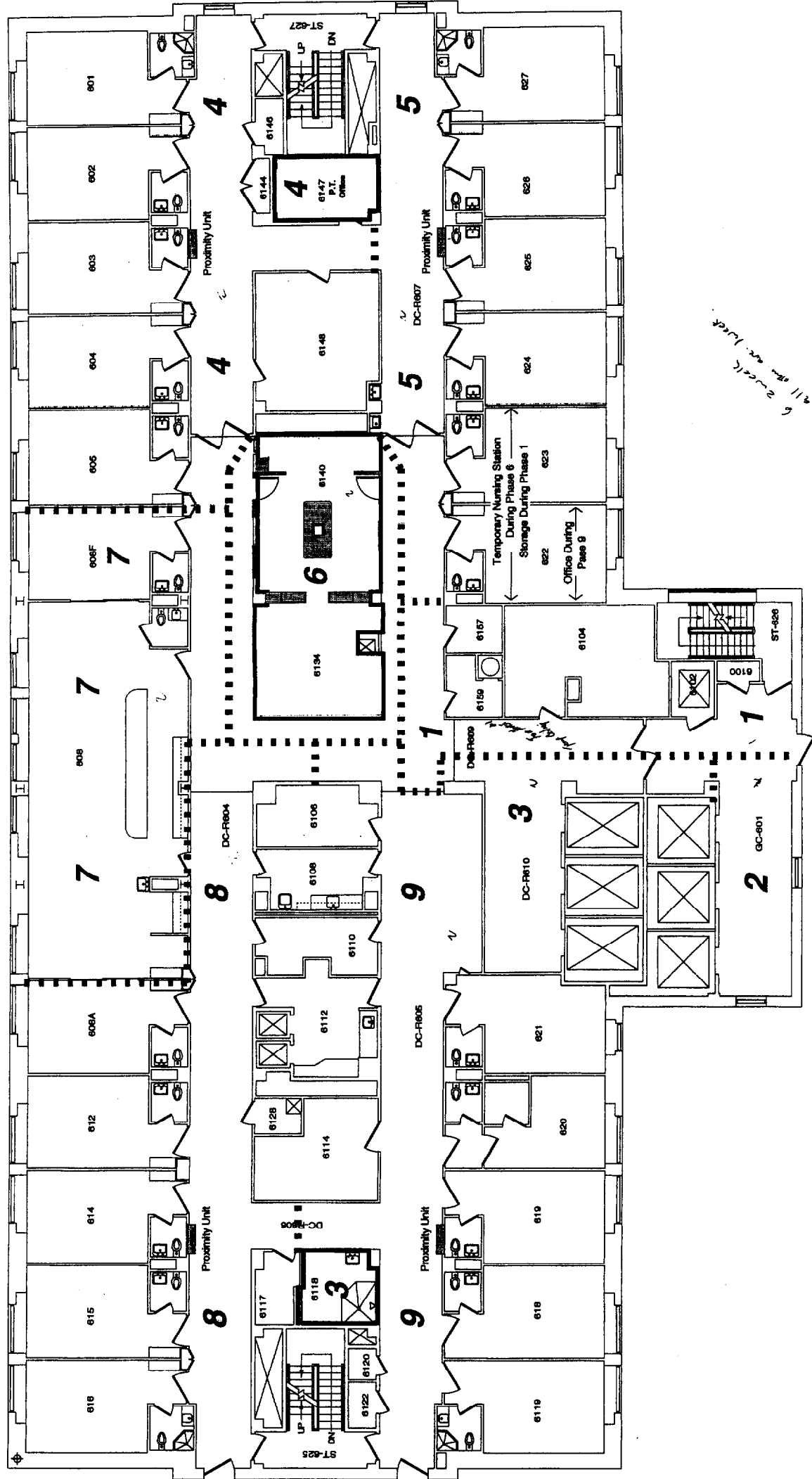
Maine Medical Center  
Portland, Maine 04102

Architect  
Winton Scott Architects  
Portland, Maine

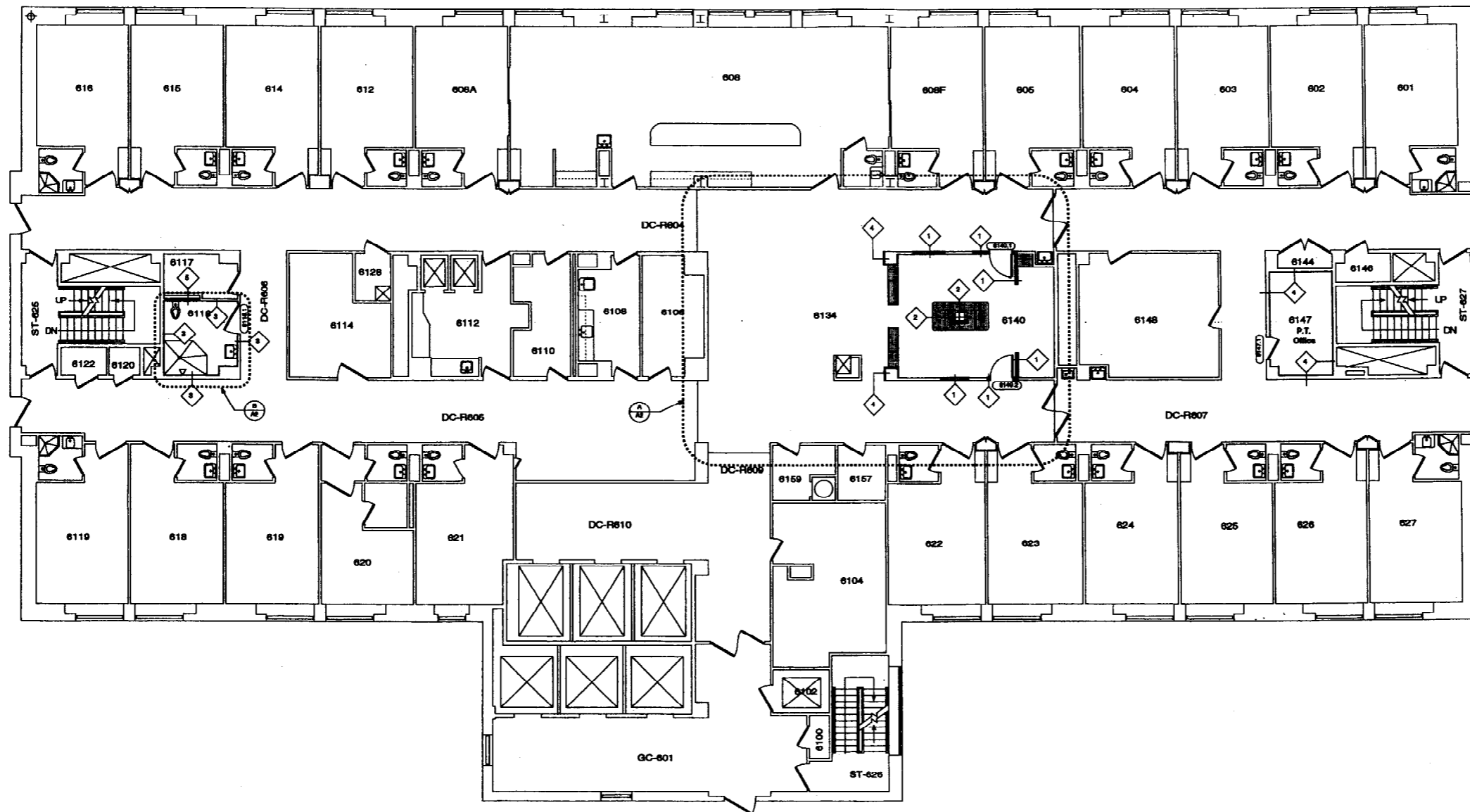
Mechanical Engineering  
Mechanical Systems  
Engineers  
Yamouth, Maine

**Phasing Plan  
Ph 1**

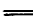

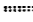

Scale: 1/8" = 1'-0"  
February 25, 2003







**Legend**

-  Existing Partition
-  Proposed Partition
-  Existing Partition To Be Removed
-  Partition Type Key

**Richards Wing  
Sixth Floor**

Renovations

Maine Medical Center  
Portland, Maine 04102

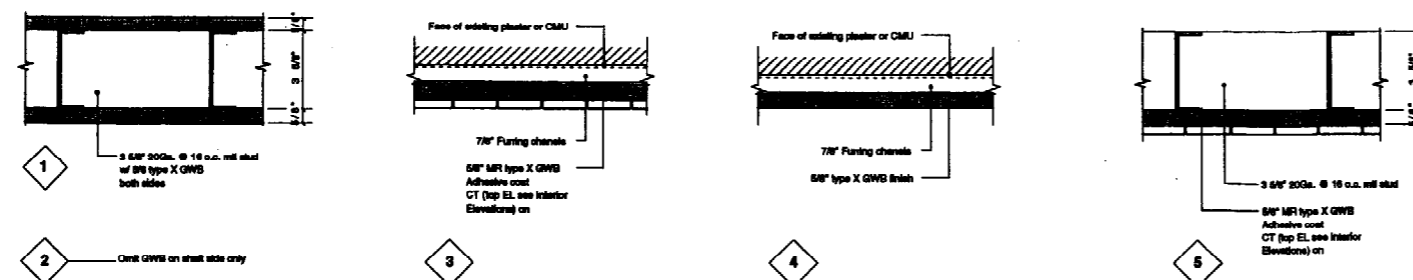
Architect  
Winton Scott Architects  
Portland, Maine

Mechanical Engineering  
Mechanical Systems  
Engineers  
Yamouth, Maine

**Flooring Plan  
A 1**

Scale: 1/8" = 1'-0"  
February 25, 2003

**1 PARTITION TYPE DETAILS**  
3" = 1'-0"





**Richards Wing**  
**Sixth Floor**  
 Renovations

Maine Medical Center  
 Portland, Maine 04102

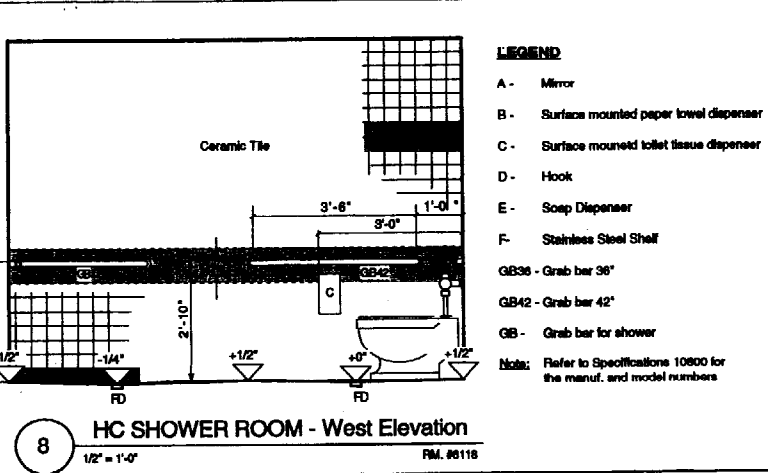
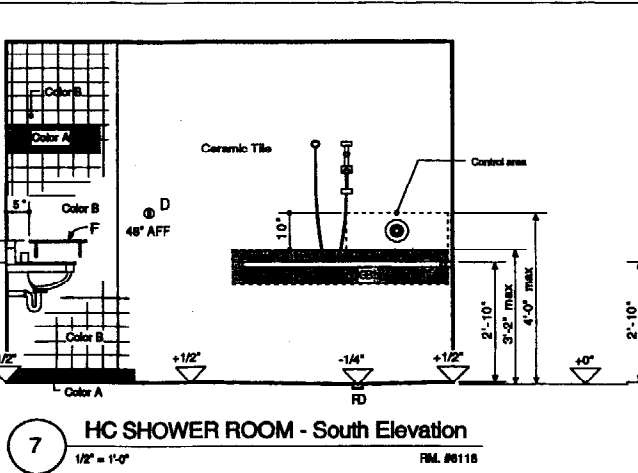
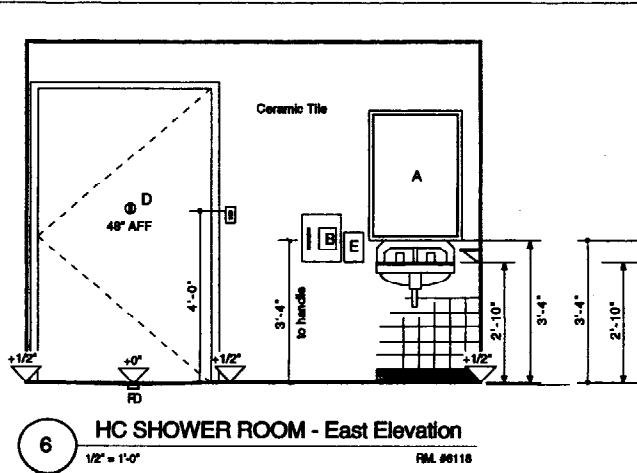
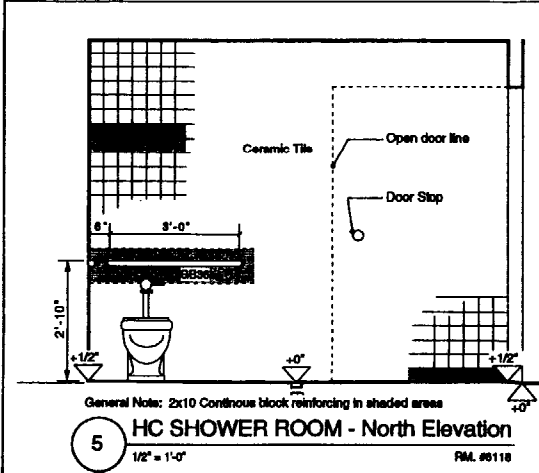
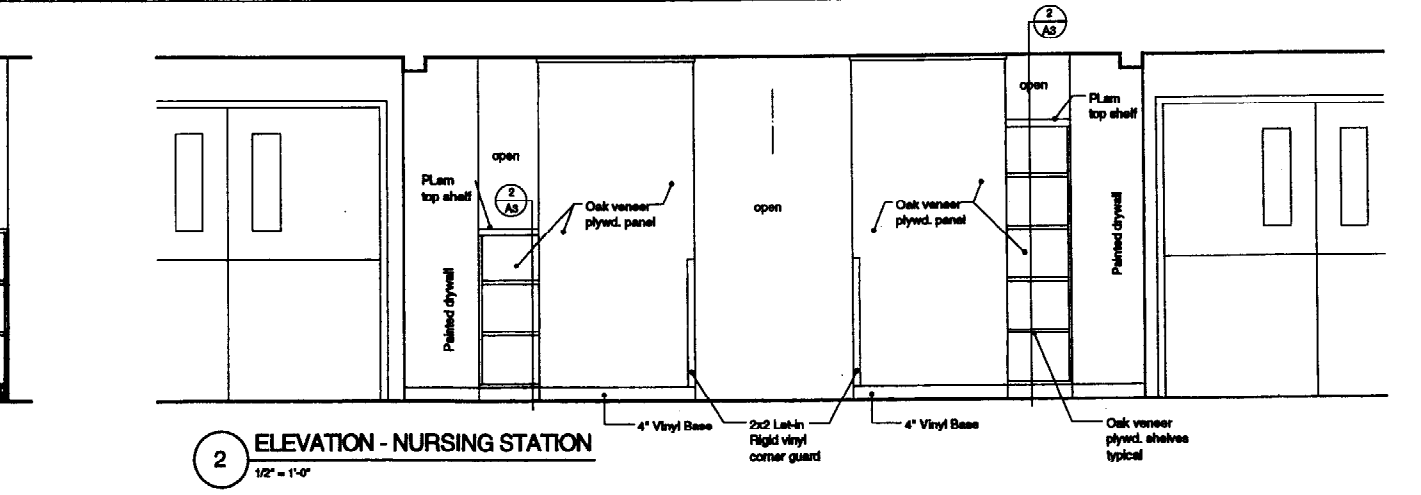
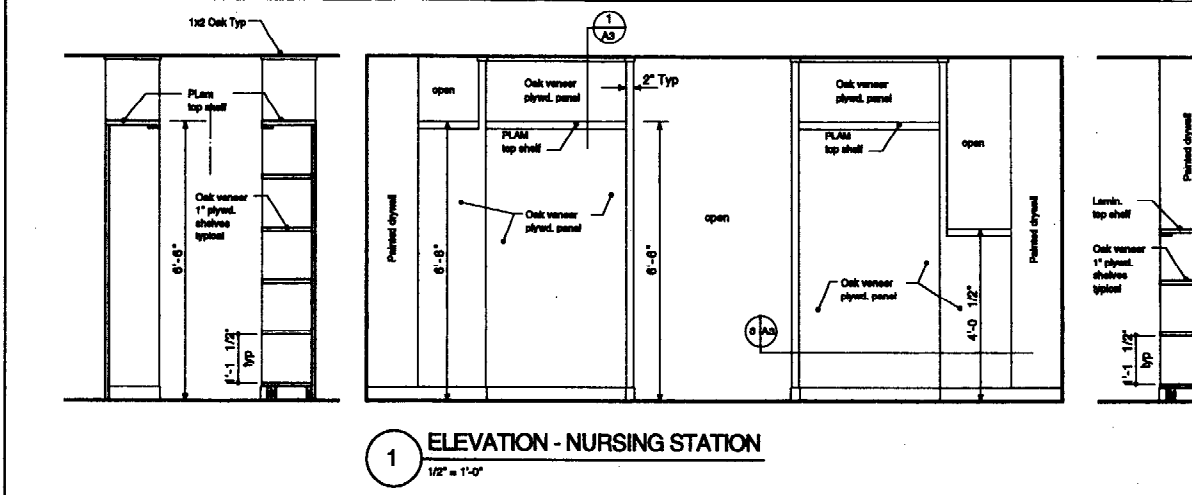
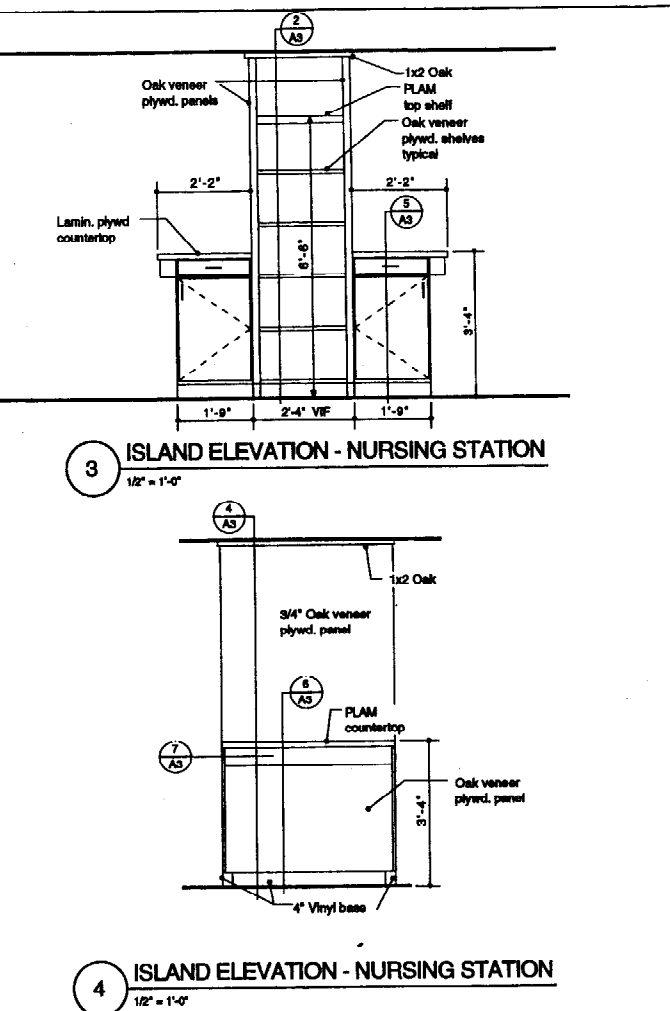
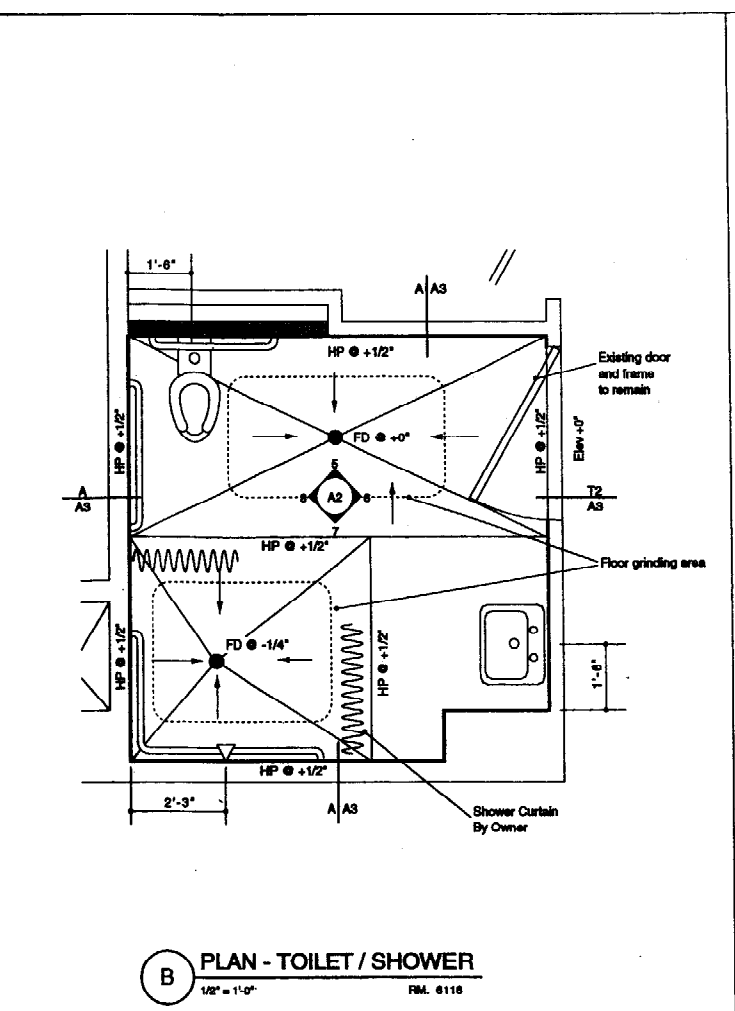
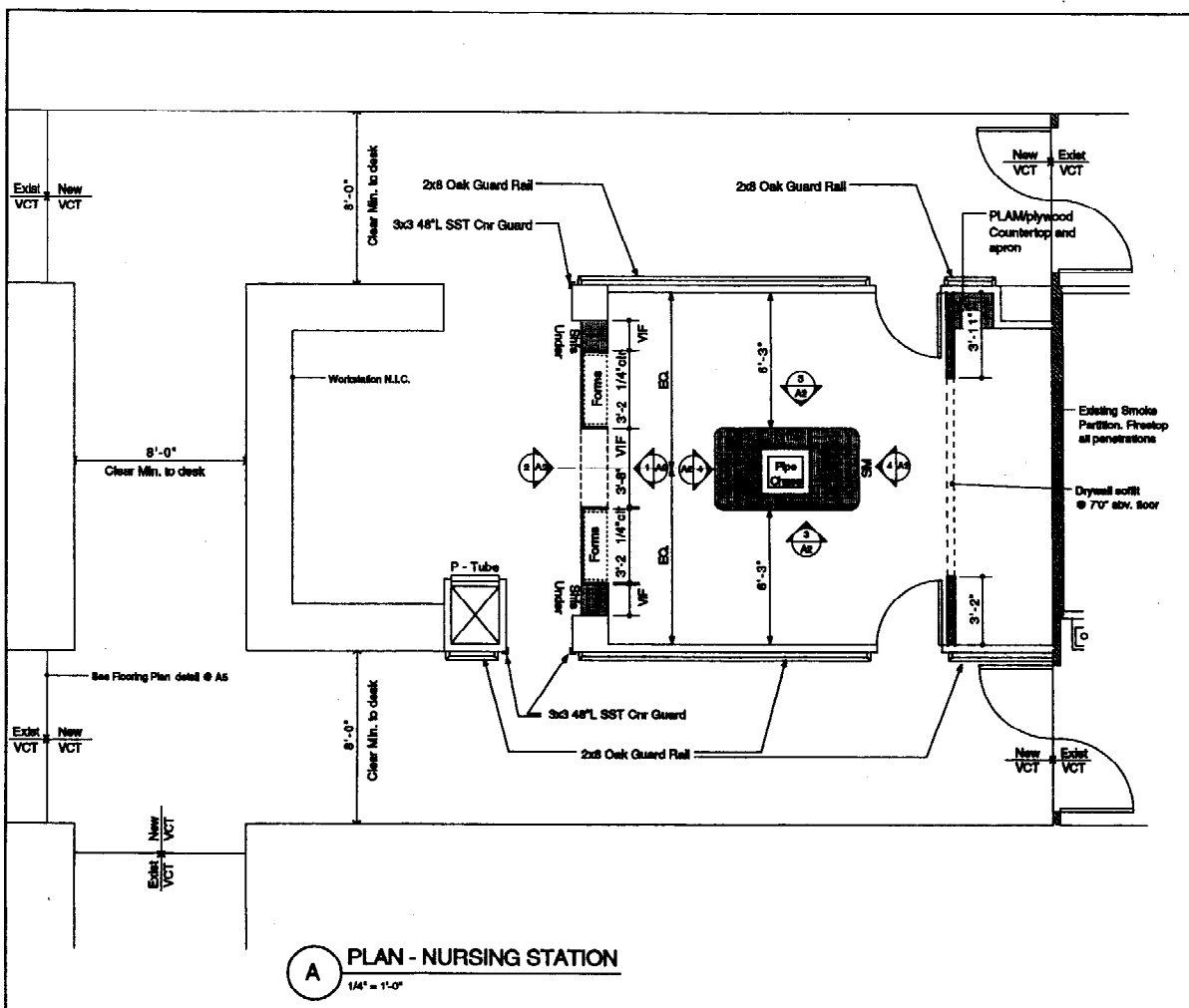
Architect  
 Winton Scott Architects  
 Portland, Maine

Mechanical Engineering  
 Mechanical Systems  
 Engineers  
 Yarmouth, Maine

Enlarged Plans  
 &  
 Interior Elevations

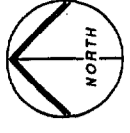
**A 2**

Scale: as shown  
 February 25, 2003



- LEGEND**
- A - Mirror
  - B - Surface mounted paper towel dispenser
  - C - Surface mounted toilet tissue dispenser
  - D - Hook
  - E - Soap Dispenser
  - F - Stainless Steel Shelf
  - GB36 - Grab bar 36"
  - GB42 - Grab bar 42"
  - GB - Grab bar for shower
- Note: Refer to Specifications 10800 for the manuf. and model numbers

General Note: 2x10 Continuous block reinforcing in shaded areas



Richards Wing  
Sixth Floor  
Renovations

Maine Medical Center  
Portland, Maine 04102

Architect  
Winton Scott Architects  
Portland, Maine

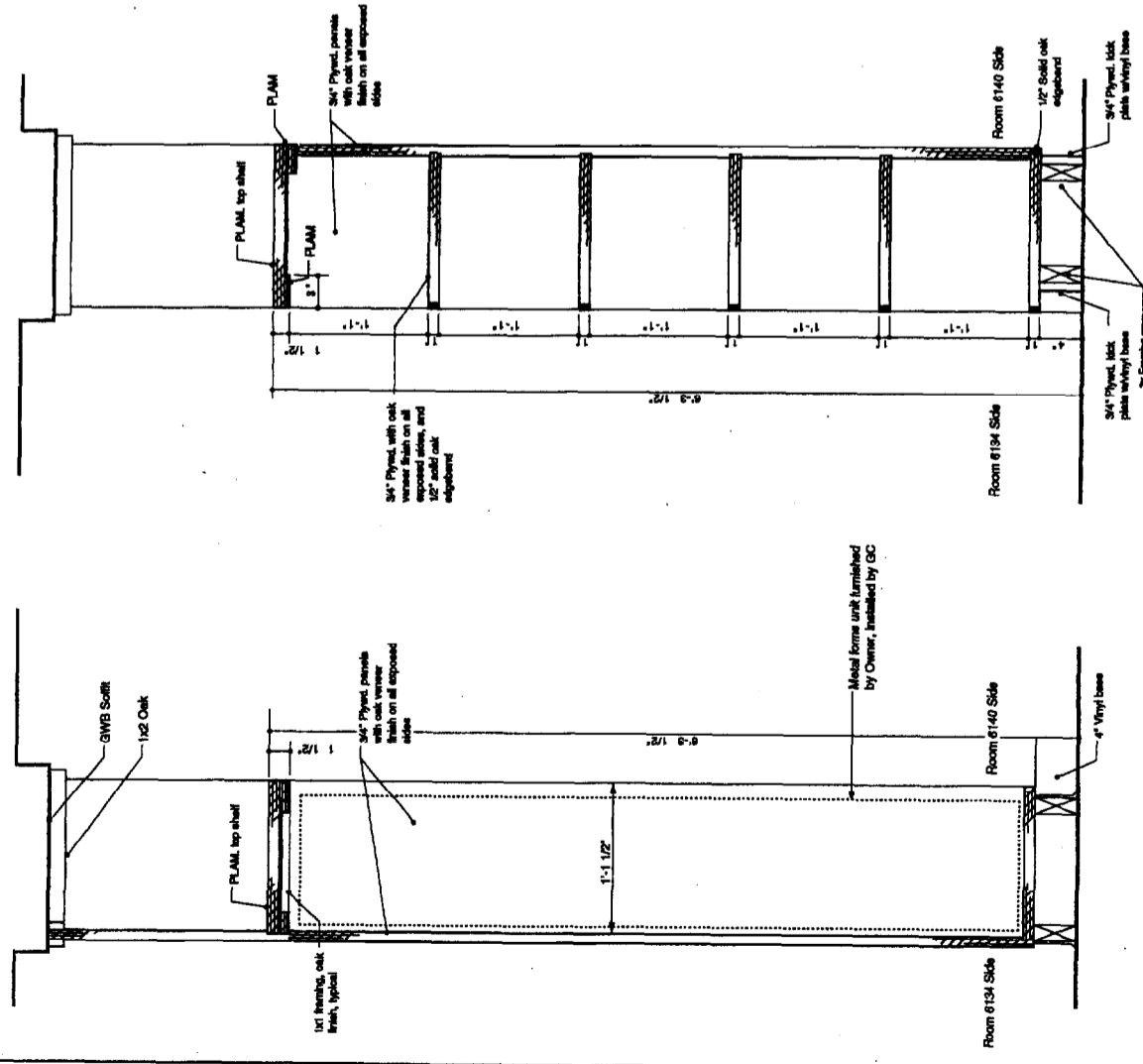
Mechanical Engineering  
Mechanical Systems  
Engineers  
Yamouth, Maine

Architectural  
Woodwork

**A 3**

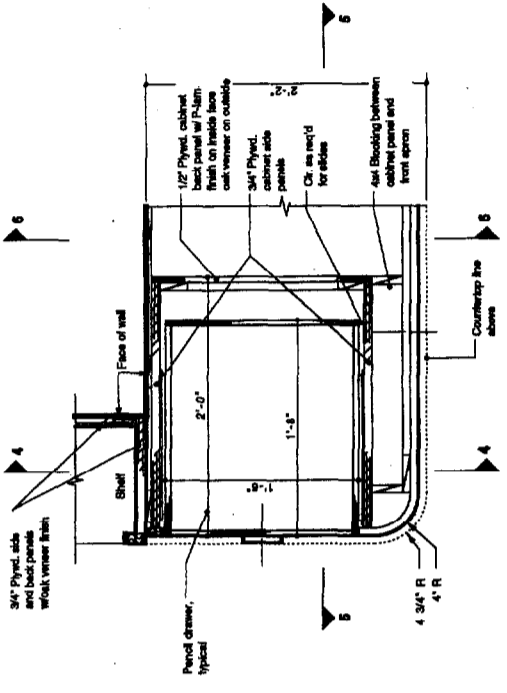
Scale: as shown  
February 25, 2003

**1** ARCHITECTURAL WOODWORK DETAILS  
1/16" = 1'-0"

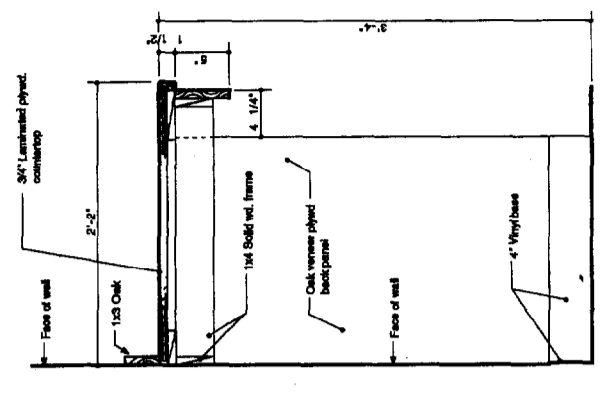


**1** DETAIL SECTION AT NURSING STATION  
1/16" = 1'-0"

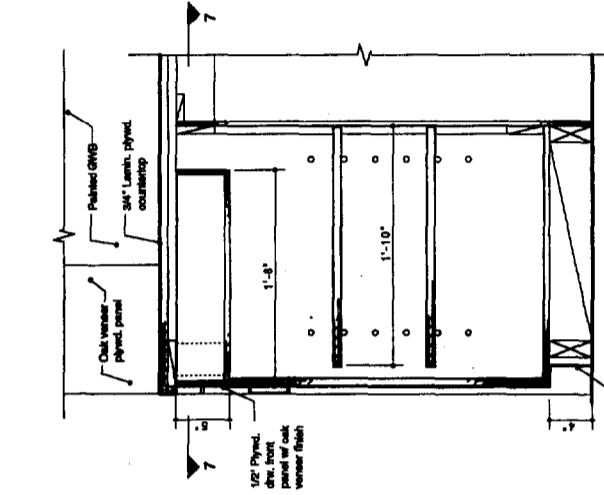
**2** SHELVES SECTION AT NURSING STATION  
1/16" = 1'-0"



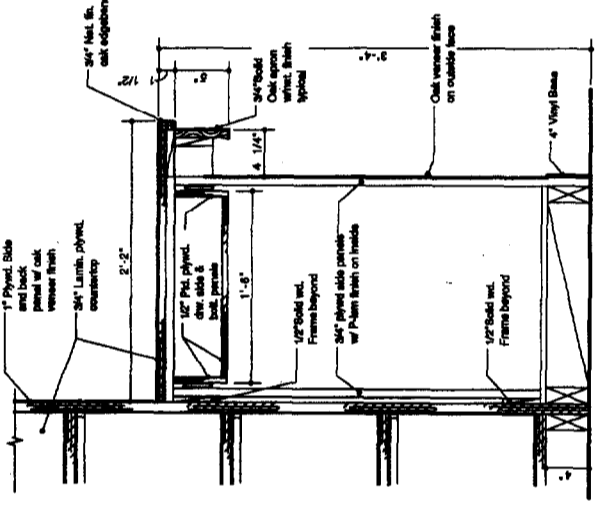
**7** ISLAND PLAN DETAIL  
1/16" = 1'-0"



**6** ISLAND SECTION  
1/16" = 1'-0"



**5** ISLAND SECTION  
1/16" = 1'-0"



**4** ISLAND SECTION  
1/16" = 1'-0"

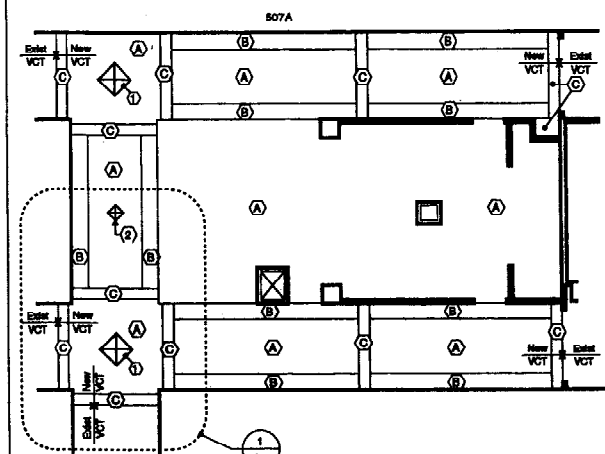
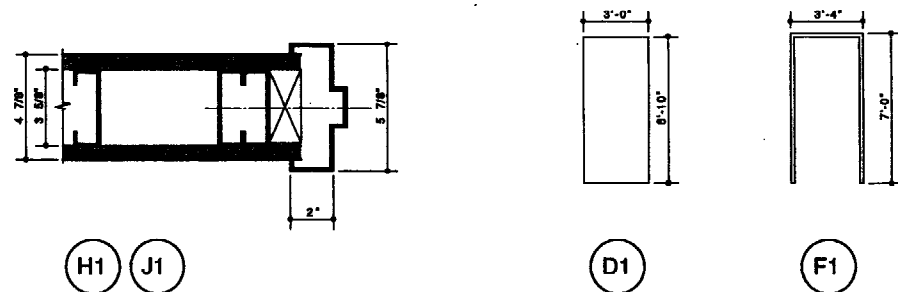


**Finish Schedule**

Room	Room	Floor	Base	Walls	Ceiling	Clg. Ht.	Remarks
611	HC Shower Room	CT	CT	Cl / Pkd. GWB	ACT	8'-0"	
614	Nursing Station	VCT	4" Vinyl	Exmt / Pkd. GWB	ACT	8'-4"	
614	Office	Carpet	4" Vinyl	Exmt / Pkd. GWB	ACT	8'-0"	

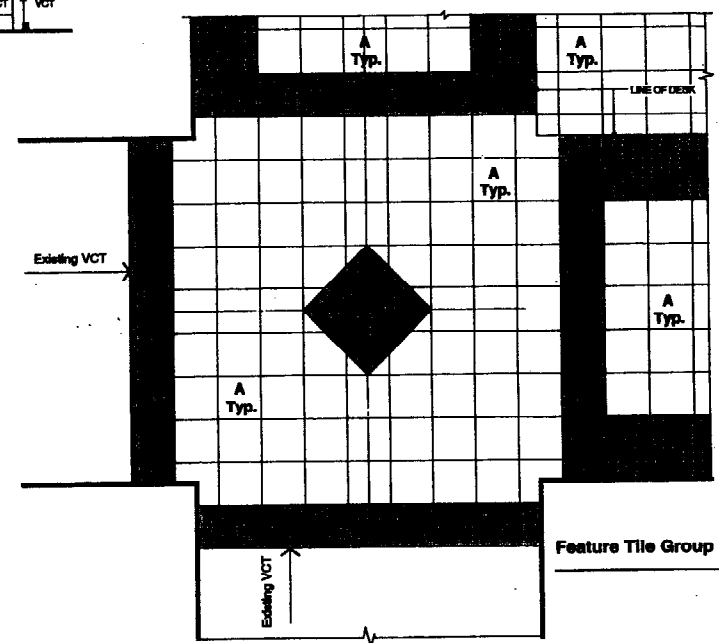
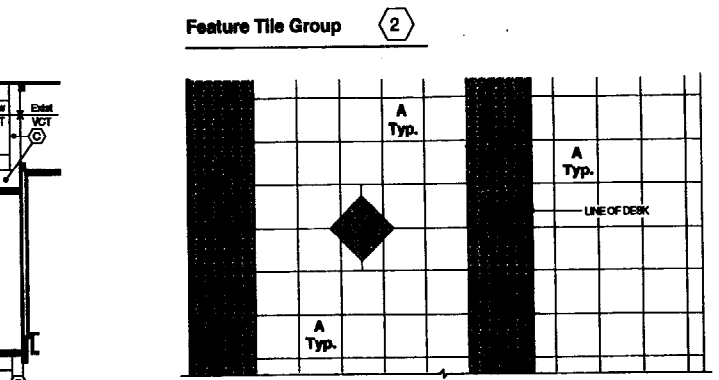
**Door and Frame Schedule**

Door No.	Size	Thickness	Door			Frame										
			Material	Finish	Type	Material	Finish	Type	Head	Jamb	Hardware	Threshold	Label	Remarks		
6140.1	3'-0" x 6'-10"	1 3/4"	Wd.	Nat.	D1	HM	Pkd.	F1	H1	J1	HW1	-	-	-	-	-
6140.2	3'-0" x 6'-10"	1 3/4"	Wd.	Nat.	D1	HM	Pkd.	F1	H1	J1	HW1	-	-	-	-	-
6147.1	exst.	exst.	exst. Wd.	Nat.	D1	exst. HM	Pkd.	F1	exst.	exst.	HW1	T1	-	-	-	-
6118.1	exst.	exst.	exst. Wd.	Nat.	D1	exst. HM	Pkd.	F1	exst.	exst.	HW2	T2	-	-	-	-



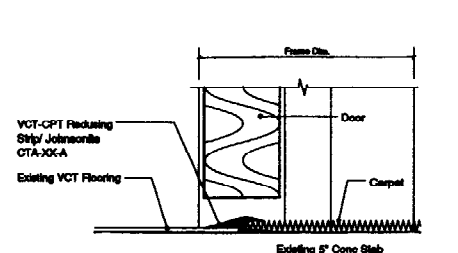
**NEW FLOORING PLAN**  
1/8" = 1'-0"

- LEGEND**
- A** Mannington - Inspirations - 417 Cream Tone
  - B** Mannington - Designer Essentials - 220 Horizon
  - C** Mannington - Essentials - 130 Wedgwood

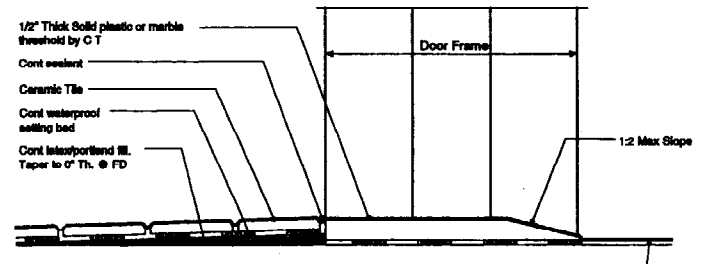


**1 PARTIAL FLOORING PLAN**  
1/2" = 1'-0"

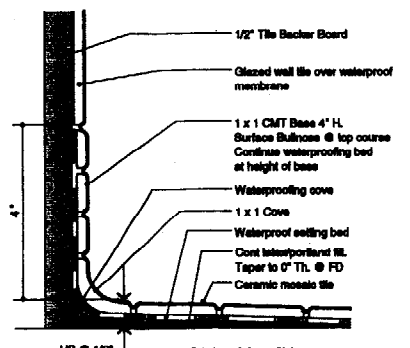
**II THRESHOLD & FLOORING DETAILS**  
6" = 1'-0"



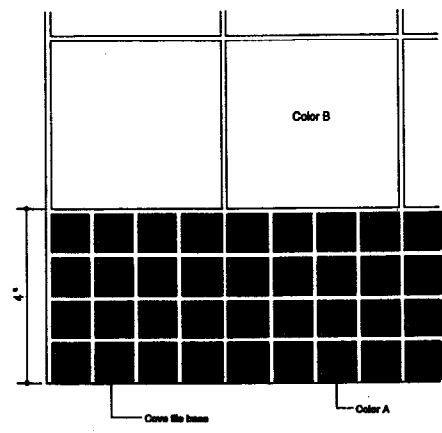
**T1 CPT / VCT THRESHOLD**  
6" = 1'-0"



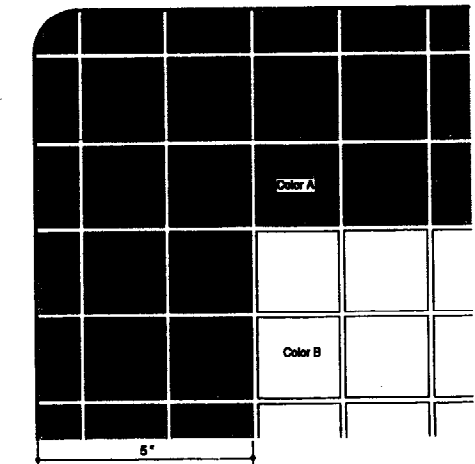
**T2 VCT / CERAMIC TILE THRESHOLD**  
6" = 1'-0"



**A BASE TILE DETAIL**  
6" = 1'-0"



**B TILE BASE ELEVATION**



**C TILE CORNER PLAN DETAIL**



Richards Wing  
Sixth Floor  
Renovations

Maine Medical Center  
Portland, Maine 04102

Architect  
Winton Scott Architects  
Portland, Maine

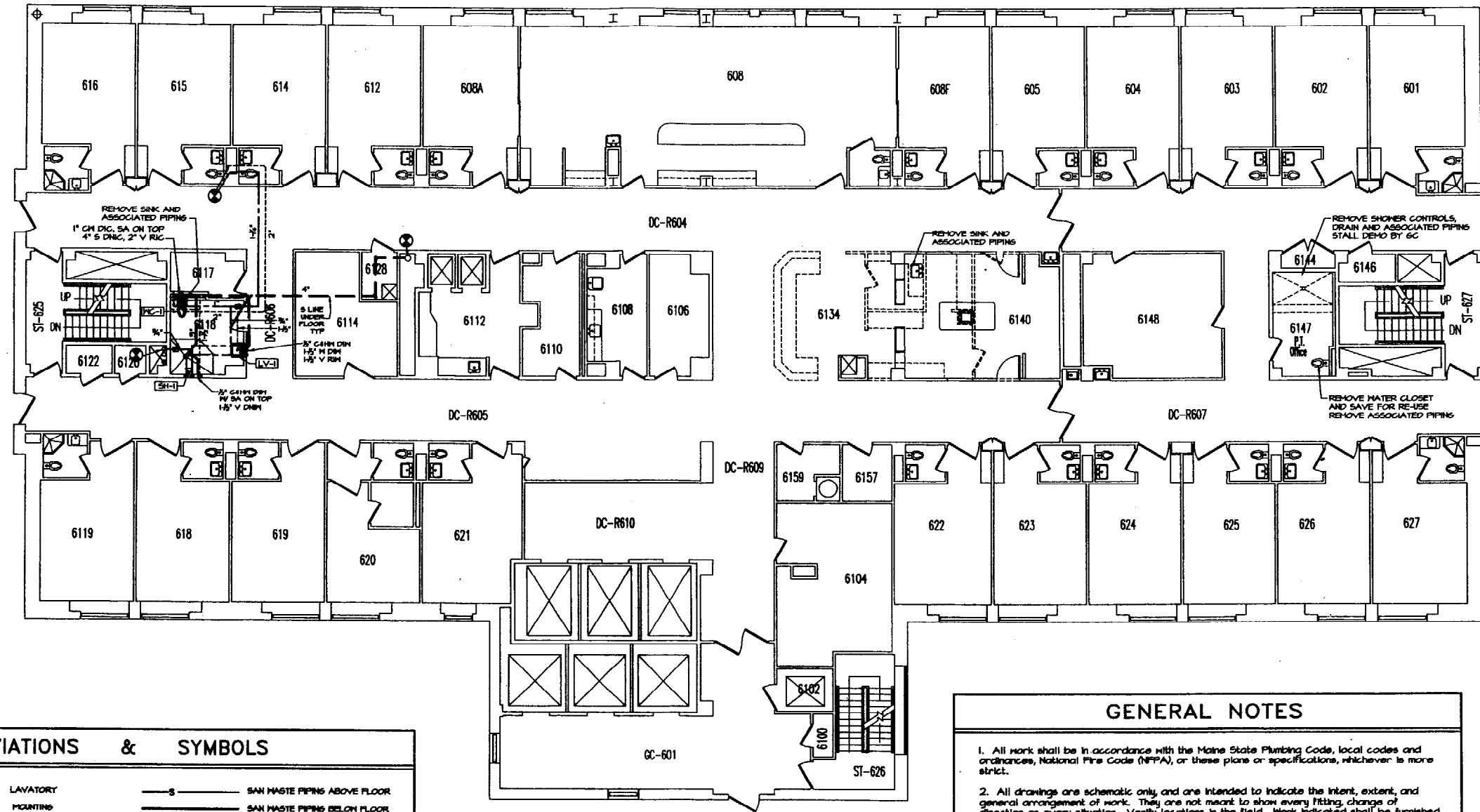
Mechanical Engineering  
Mechanical Systems Engineers  
Yamouth, Maine

Schedules &  
Flooring Details

**A 5**

Scale: as shown  
February 25, 2003





**SIXTH FLOOR  
PLUMBING PLAN**  
SCALE: 1/8"=1'-0"

ABBREVIATIONS & SYMBOLS			
ADA AMERICANS WITH DISABILITIES ACT	LV LAVATORY	—S— SAN WASTE PIPING ABOVE FLOOR	
AFF ABOVE FINISHED FLOOR	MTG MOUNTING	—S— SAN WASTE PIPING BELOW FLOOR	
CO CLEANOUT	PC PLUMBERS CONTRACTOR	—V— VENT PIPING ABOVE FLOOR	
CM COLD WATER	RAM RISE AT MALL	—C— COLD WATER PIPING	
CHM COLD & HOT WATER	RIC RISE IN CHASE	—H— HOT WATER PIPING	
DAM DROP AT MALL	RM RISE IN MALL	—B— BALL VALVE	
DC DROP IN CHASE	S SANITARY WASTE	—C— CHECK VALVE	
DM DROP IN MALL	SA SHOCK ABSORBER	—D— DROP/RISE IN LINE	
DN DOWN	TYP TYPICAL	—U— LINE UP TO FLOOR ABOVE	
DNM DOWN IN MALL	UAM UP AT MALL	—T— TEE -DROP	
DNC DOWN IN CHASE	UC UP IN CHASE	—S— SHOCK ABSORBER	
DNM DOWN IN MALL	UM UP IN MALL	—U— UNION	
FD FLOOR DRAIN	V VENT	—F— FLOOR DRAIN	
FPE FINISHED FLOOR ELEVATION	VF VERIFY IN FIELD	—L—	
GC GENERAL CONTRACTOR	N WASTE	—L—	
GPF GALLONS PER FLUSH	M WITH	—L—	
HM NO DEF. F. HOT WATER	MC WATER CLOSET	—L—	
		—L—	

PLUMBING FIXTURE SCHEDULE						
TAG	FIXTURE	CW	HW	WASTE	VENT	REMARKS
MC-1	WATER CLOSET, MALL, ADA	1"	-	4"	2"	1/8" OFF, VC, EXPOSED TV
LV-1	LAVATORY, MALL, ADA	1/2"	1/2"	1-1/2" 1-3/4"	1-1/2"	VC, SINGLE LEVER FAUCET, MALL CARRIER MOUNTED
SH-1	SHOWER, PATIENT	1/2"	1/2"	1-1/2"	1-1/2"	STALL BY GC, ADA CONTROLS, REGULAR & HAND HELD SHOWER HEADS

- GENERAL NOTES**
- All work shall be in accordance with the Maine State Plumbing Code, local codes and ordinances, National Fire Code (NFPA), or these plans or specifications, whichever is more strict.
  - All drawings are schematic only and are intended to indicate the intent, extent, and general arrangement of work. They are not meant to show every fitting, change of direction or every situation. Verify locations in the field. Work indicated shall be furnished complete to perform the function intended.
  - All plumbing fixtures shall be back vented. This contractor shall make all final plumbing connections to equipment/ fixtures provided by other contractors.
  - All piping shall run concealed above ceilings, in walls, in soffits and in chases unless noted otherwise.
  - No structural members shall be cut without approval of the Architect.
  - All plumbing shall be supported from the building structure. All piping 2" and larger shall be supported from the top chord of bar joists. All piping drops to fixtures shall be anchored solid to walls with a steel support bracket with adjustable clip.
  - All water piping shall be installed parallel to building lines and pitched to low points. Provide draw-offs at low points. Piping shall be run neatly grouped together when practical.
  - All piping through roofs, masonry walls and partitions shall have steel pipe sleeves. Openings between pipes and sleeves shall be caulked and sealed smoke and water tight. All pipe penetrations through a fire rated wall or floor shall be cast iron, steel or copper and rated to match the rating of the wall, as per the NFPA.
  - All wall fixtures shall be carrier mounted unless otherwise specified.
  - All domestic water piping, unless buried or specified otherwise, shall be insulated.
  - All sanitary waste piping less than 3" shall pitch down at 1/4" per L.F. All 3" and larger piping shall pitch at 1/8" per L.F.

Richards Wing  
Sixth Floor  
Renovations

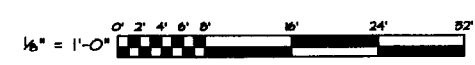
Maine Medical Center  
Portland, Maine 04102

Architect  
Winton Scott Architects  
Portland, Maine

Mechanical Engineering  
Mechanical Systems Engineers  
Yarmouth, Maine



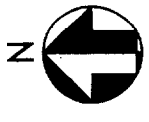
**MECHANICAL SYSTEMS ENGINEERS**  
ROYAL RIVER CENTER, UNIT #10  
10 FOREST FALLS DRIVE  
YARMOUTH, MAINE 04095  
VOICE: (207) 848-1441  
FAX: (207) 848-1443  
mechsys@maine.rr.com  
© COPYRIGHT 2003



P1

Scale: As Noted  
February, 14, 2003

Feb. 14, 2003 - 8:29 AM  
\\P:\mech\Projects\0303\Drawings\0303-01.dwg\dwg.plt



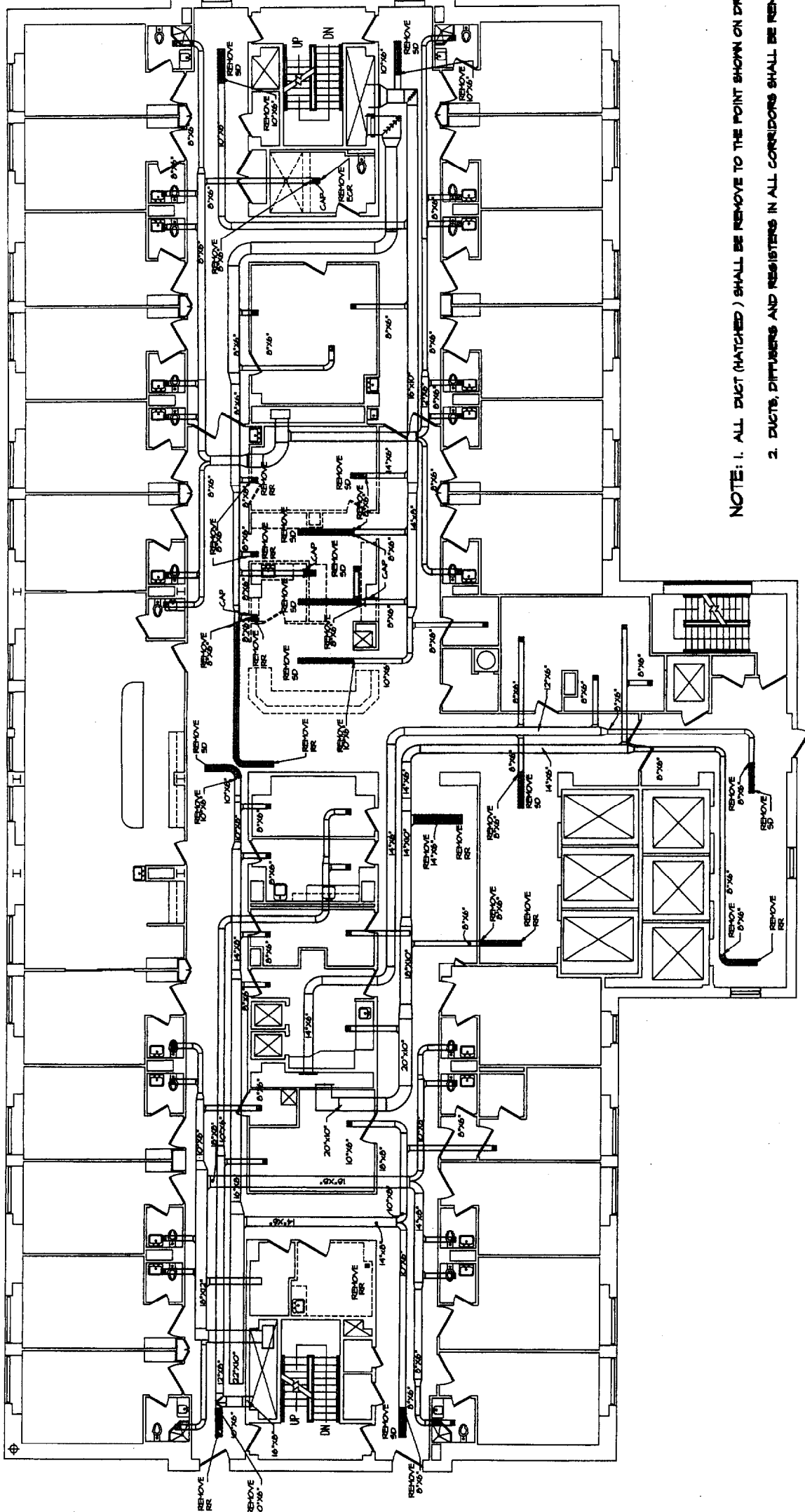
Richards Wing  
Sixth Floor  
Renovations

Maine Medical Center  
Portland, Maine 04102

*Architect*  
Winton Scott Architects  
Portland, Maine  
*Mechanical Engineering*  
Mechanical Systems Engineers  
Yamouth, Maine

MD1

Scale: As Noted  
February, 18, 2003



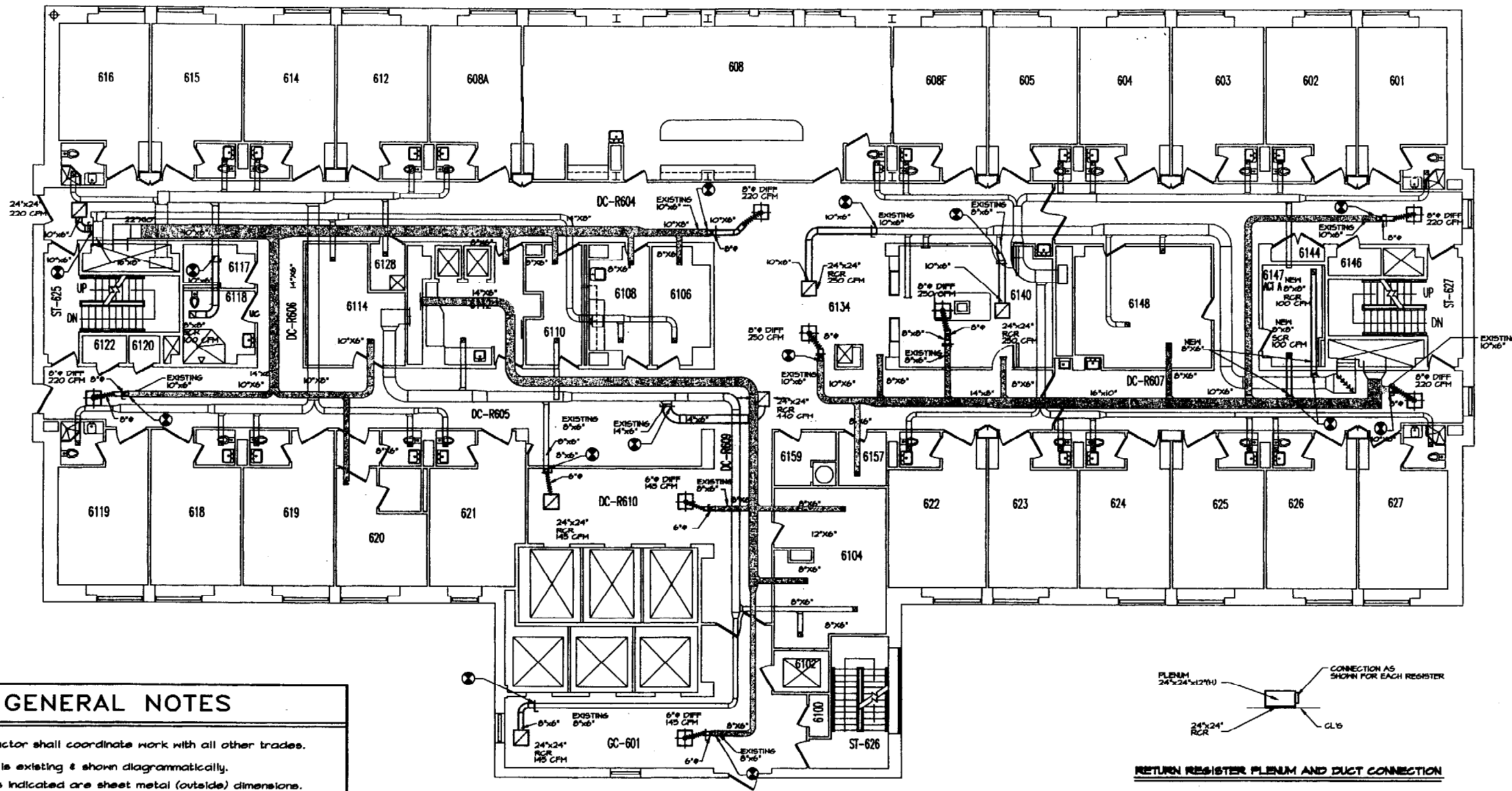
- NOTE:**
1. ALL DUCT (HATCHED) SHALL BE REMOVE TO THE POINT SHOWN ON DRAWING.
  2. DUCTS, DIFFUSERS AND REGISTERS IN ALL CORRIDORS SHALL BE REMOVE UNDER ALT. #2

**6th FLOOR MECHANICAL PLAN - DEMOLITION**  
SCALE: 1/8"=1'-0"

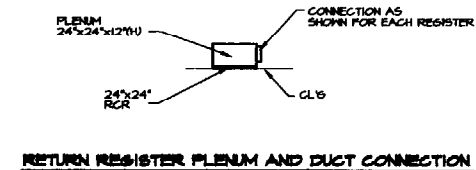


**MECHANICAL SYSTEMS ENGINEERS**  
10 FOREST FALLS DRIVE  
YAMOUTH, MAINE 04096  
PHONE: (207) 868-1443  
FAX: (207) 868-1443  
mechanse@maine.net  
www.mechse.com





**6th FLOOR MECHANICAL PLAN - NEW WORK**  
SCALE: 1/8" = 1'-0"

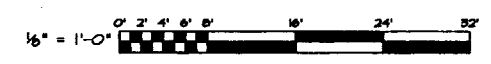


- GENERAL NOTES**
1. HVAC Contractor shall coordinate work with all other trades.
  2. All ductwork is existing & shown diagrammatically.
  3. All duct sizes indicated are sheet metal (outside) dimensions.
  4. All cutting and patching shall be provided by the General Contractor.
  5. All square elbows in ductwork SHALL HAVE airfoil turning vanes.
  6. Refer to reflected ceiling plan for exact location of all ceiling registers, grilles and diffusers.
  7. All dimensions are approximate and are to be field verified.
  8. All removed materials shall remain the property of the owner until such time that the owner's authorized representative has reviewed the removed materials and taken what the owner wishes to retain. All remaining items shall become the property of the contractor and shall be immediately removed from the premises by the contractor.

**SYMBOLS AND ABBREVIATIONS**

AC	AIR CONDITIONING
RCR	RETURN CEILING REGISTER
SR	SUPPLY REGISTER
RR	RETURN REGISTER
UC	UNDERCUT
⊠	EXISTING RETURN
⊞	EXISTING SUPPLY
⊙	CONNECT TO EXISTING

- NOTE:**
1. ALL EXISTING SUPPLY DUCTWORK (HATCHED) SHALL BE INSULATE UNDER ALT. #2
  2. SIZE OF ALL EXISTING DUCTWORKS AND CONNECTIONS SHALL BE VARIFIED IN FIELD
  3. REGISTERS AND DIFFUSERS IN ALL CORRIDORS UNDER ALT. #2



**MECHANICAL SYSTEMS ENGINEERS**  
ROYAL RIVER CENTER, UNIT #10  
10 FOREST FALLS DRIVE  
YARMOUTH, MAINE 04096  
VOICE: (207) 848-1441  
FAX: (207) 848-1442  
mechsys@maine.rr.com  
©2002 MS

Richards Wing  
Sixth Floor  
Renovations

Maine Medical Center  
Portland, Maine 04102

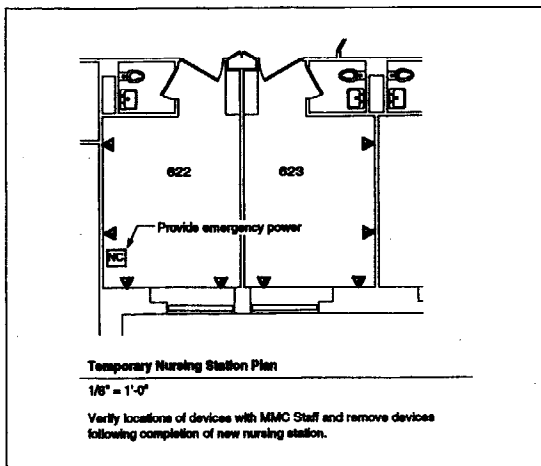
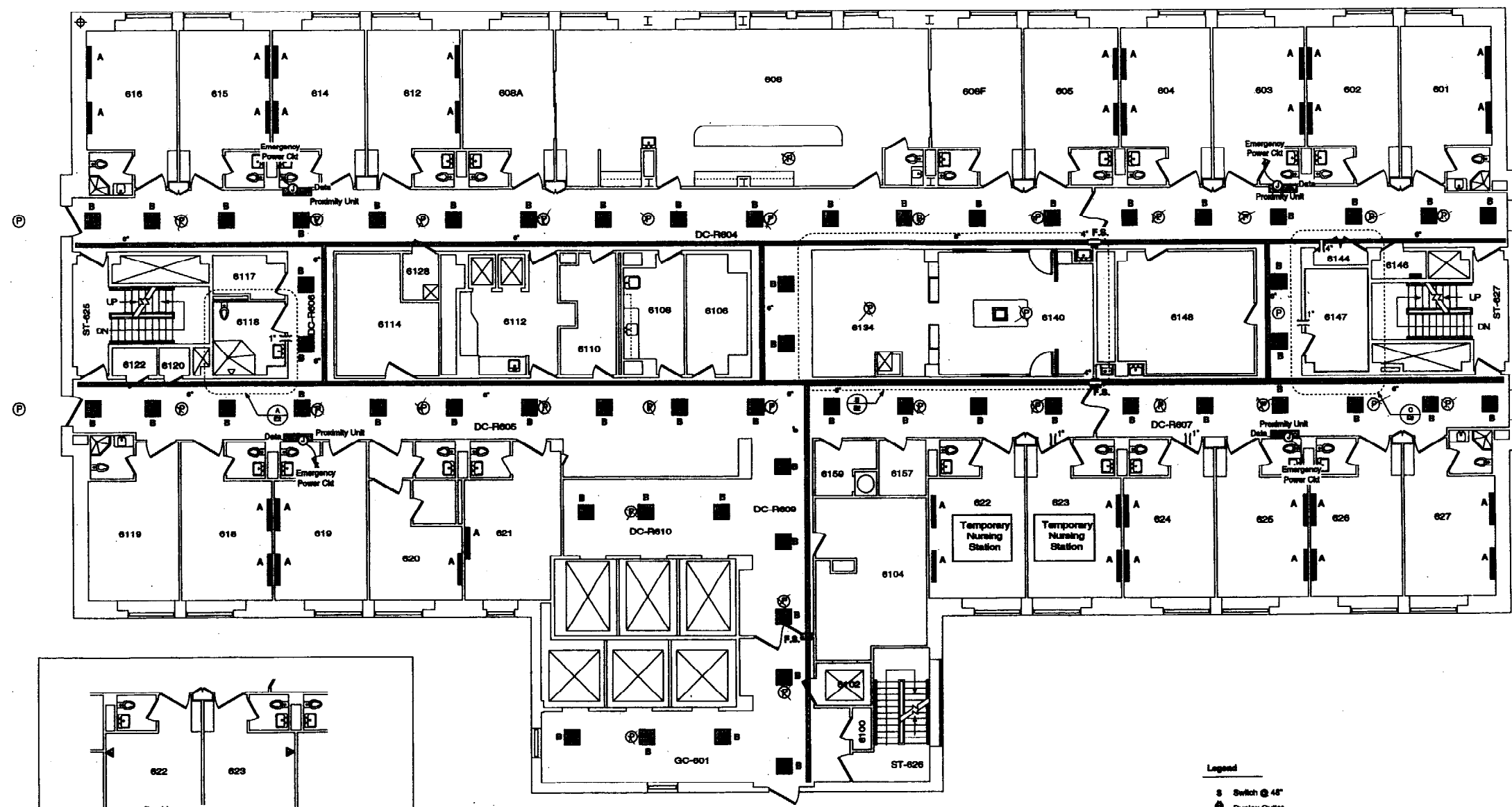
Architect  
Winton Scott Architects  
Portland, Maine

Mechanical Engineering  
Mechanical Systems Engineers  
Yarmouth, Maine

M1

Scale: As Noted  
February, 18, 2003

Feb 18, 2003 - 2:37 pm  
\\P:\maine\projects\0303\Unetings\0303-11.dwg\dwg



**Lighting Fixture Schedule**

Mfr	Model No.	Mounting	Lamping	Remarks
A	Hill-Rom	Surface (60" AFF)	(2) F032T8/841	Up/Down Headwall Unit Furnished by Owner. E.C. shall transport from South Portland to MMC and install. Remove exist light. Provide blank cover plate and extend wiring to new fixture. Mounting board by G.C. Switch upright from wall switch. Downlight switched fixture pull chain.
B	Lightolier	Recessed	(2) T8BT	Provide By Alternate #1/Wire to existing lighting circuit/Verify continuity
C	Columbia	Recessed	(2) CF40TT/841 4-Pin	2x2 Phosmatic Troler
D	Columbia	Recessed	(2) F032T8/841	Wet Location 1x4/Recessed Grid Ceiling
E1	Columbia	Recessed		Recessed Consoled Mounting
E2	Columbia	Recessed	(2) F017T8/841	6 x 24 Parabolic Fluor / Recessed Consoled Mounting
E4	Columbia	Recessed	(2) F032T8/841	6 x 48 Parabolic Fluor / Recessed Consoled Mounting

**Nurse Call System Notes**

To support the nurse call temporary relocation of the nursing station at Room 622 and Room 623 and the permanent relocation of the bathroom, provide the following:

- One (1), 3 twisted pair cat 3 cable for the console and a power run. The console cable shall run from the NTI room to the temp console location, after the console is moved back to the nurses station this cable will need to be pulled back to room 6148. This run shall also include an emergency power console receptacle, the part # for this jack is NCREOP. The power run needs to be run from the power supply from that floor to the console as well, and will also need to be pulled back to room 6148.
- Two (2), 2 twisted pair cat 3 J-Bus cables, this shall run from the NTI room to the power panel on R-6, one for the rework of the bath that is moving to the new room 6118 from room 6147 and the other shall be provided as a spare.
- One (1), 14 gauge ground wire from the NTI room to the power panel on R-6. This cable will support the floating ground for proper power supply reference.
  - Provide also a total of 8 standard MMC voice/data drops in the temporary nursing station. Field verify locations with MMC Staff.
  - Provide sleeves and fire stopping to support the new cables. Field verify locations with MMC Staff before bidding.

- Legend**
- ⊗ Switch @ 48"
  - ⊕ Duplex Outlet
  - ⊕ Emergency Power Duplex Outlet
  - ▽ Voice/Data Outlet
  - D4 ▽ Data Outlets Quantity Indicated
  - W ▽ Wall Phone Outlet At Height Shown
  - 4" ——— Metallic conduit sleeve of size shown with J-HY fixation system. Provide Under Alternate #4.
  - 6" ——— Cable Tray Width As Shown. Provide Under Alternate #4.
  - F.S. ■ Cable Tray 1 Hour Firestop System. Provide Under Alternate #4.
- E Nurse Call Emergency Pull Cord Station
  - S Nurse Call Staff Station
  - P Nurse Call Patient Station
  - AP Nurse Call Annunciator Panel
  - NC Nurse Call Annunciator Panel
  - FL □ Install Item Saved For Reuse
  - TV Television Outlet
  - ⊙ Paging System Speaker. Provide Speakers and Amplifier Under Alternate #3.

- Notes**
- MMC shall furnish Box Termination Blocks and Termination Strips for installation by the electrical contractor.
  - Electrical contractor shall provide labels.
  - All new or relocated voice connections shall be installed in MMC provided termination blocks.
  - Electrical contractor shall furnish and install cable path and cable.
  - See Drawing A4 for removal and reinstallation of existing corridor ceiling devices.
  - Verify locations of all items with architectural ceiling plans.
  - Remove existing surface mounted raceway in corridors. Relocate cables to proposed cable tray.

**Richards Wing  
Sixth Floor  
Renovations**

Maine Medical Center  
Portland, Maine 04102

Architect  
Winton Scott Architects  
Portland, Maine

Mechanical Engineering  
Mechanical Systems  
Engineers  
Yarmouth, Maine

**Electrical Plan  
E 1**

Scale: 1/8" = 1' - 0"  
February 25, 2003