

OWNER:

Maine Medical Center

22 Bramhall St, Portland, Maine 04102-3175

ARCHITECT:

Lavallee Brensinger Architects

305 Commercial Street
Portland, ME 04101
207.558.7200
www.LBPA.com

CONSTRUCTION MANAGER:

Hebert Construction

9 Gould Road
Lewiston, ME 04240
www.hebertconstruction.com

DESIGN/BUILD ELECTRICAL ENGINEER:

Favreau Electric

37 Jordan Ave
Brunswick, ME 04011
www.favreauelectric.com

DESIGN/BUILD PLUMBING ENGINEER:

Johnson & Jordan

18 Mussey Rd
Scarborough, ME 04074
www.johnsonandjordan.com

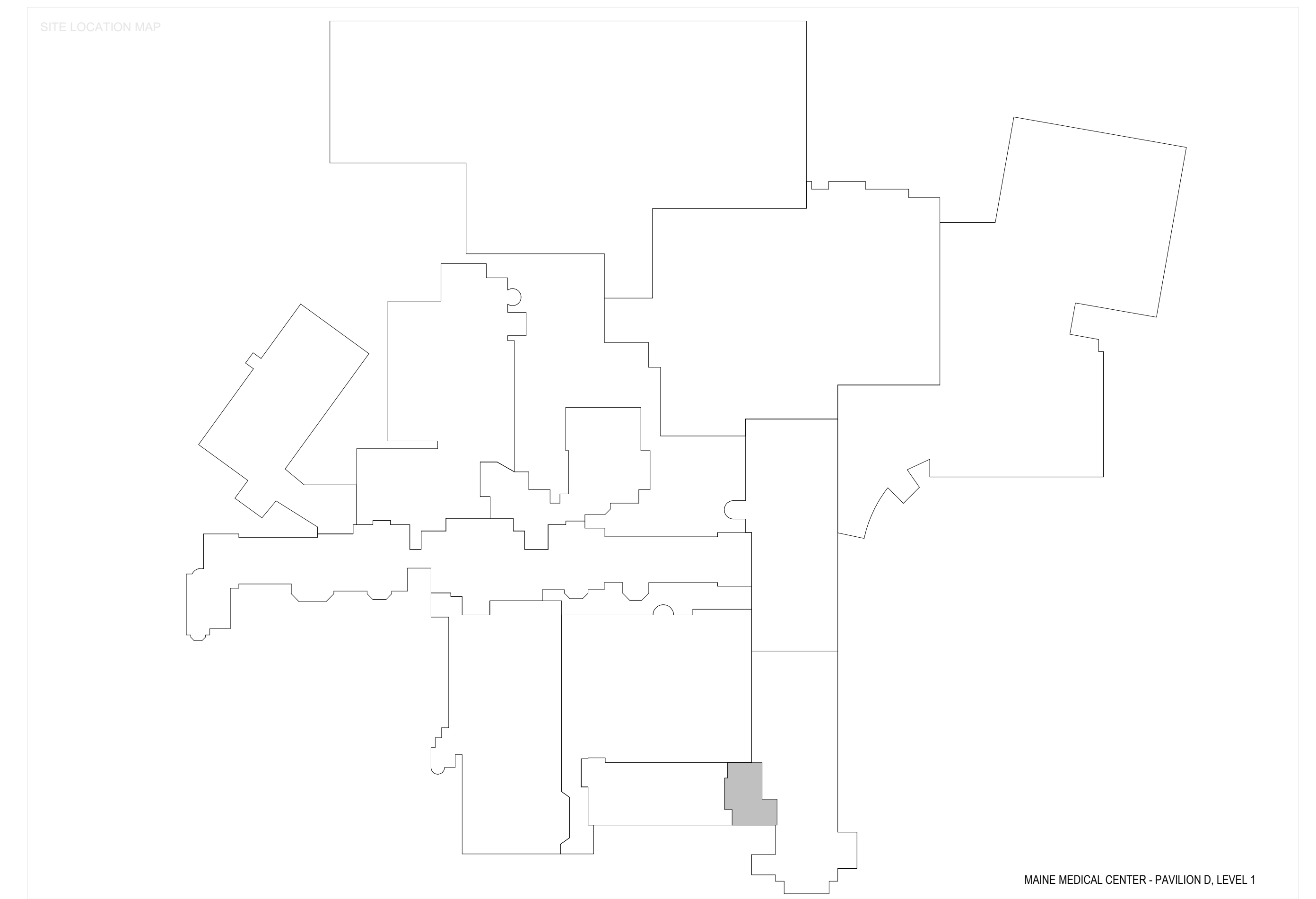
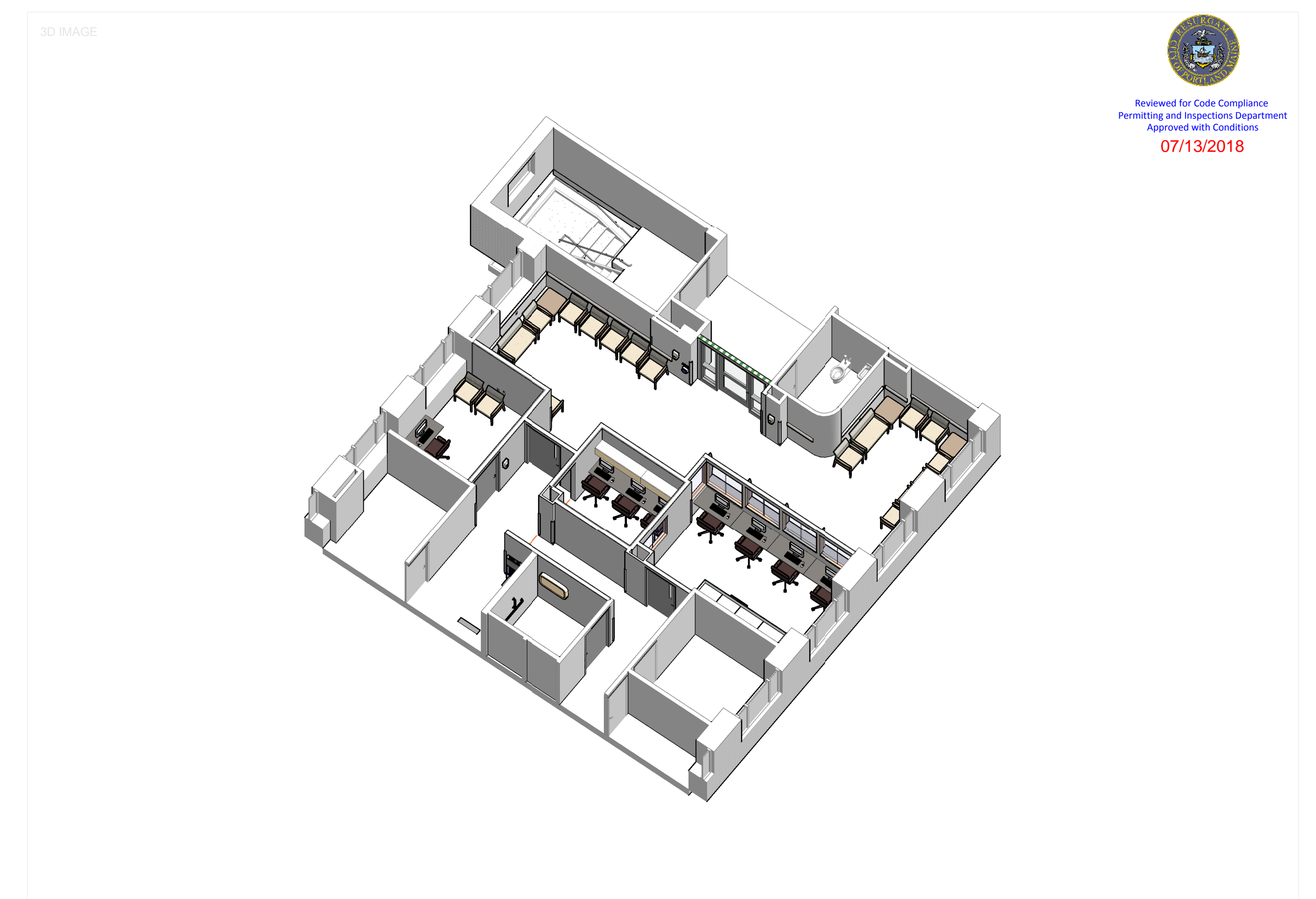
FOR ADDITIONAL INFORMATION, REFER TO PROJECT MANUAL.

ARCHITECTURAL

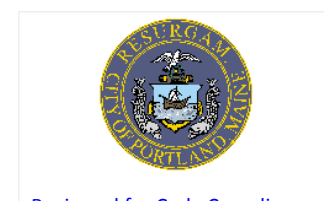
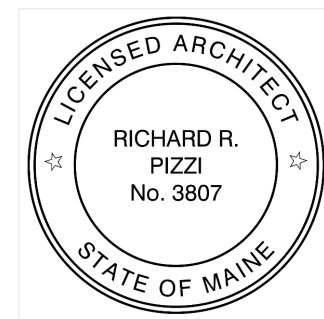
A0.1	LEGENDS, SYMBOLS, NOTES, PARTITION TYPES, DOOR & WINDOW TYPES
A0.2	CODE ANALYSIS TEXT, SYMBOLS AND RATINGS
A1.1	FIRST FLOOR DEMO PLAN & NEW CONSTRUCTION PLAN
A2.1	INTERIOR ELEVATIONS & MILLWORK DETAILS
A11.1	FIRST FLOOR EQUIPMENT, FURNITURE, FLOOR PATTERN PLAN

Maine Medical Center

22 Bramhall St, Portland, Maine 04102-3175



4/23/2018 12:42:20 PM C:\Projects\17-079-00_MMCC_OPD_Clinic_PAVILION D_Level 1\fig\gwin.mxd



Reviewed for Code Compliance
Permitting and Inspections Department
Approved with Conditions
07/13/2018

DEMOLITION LEGEND:

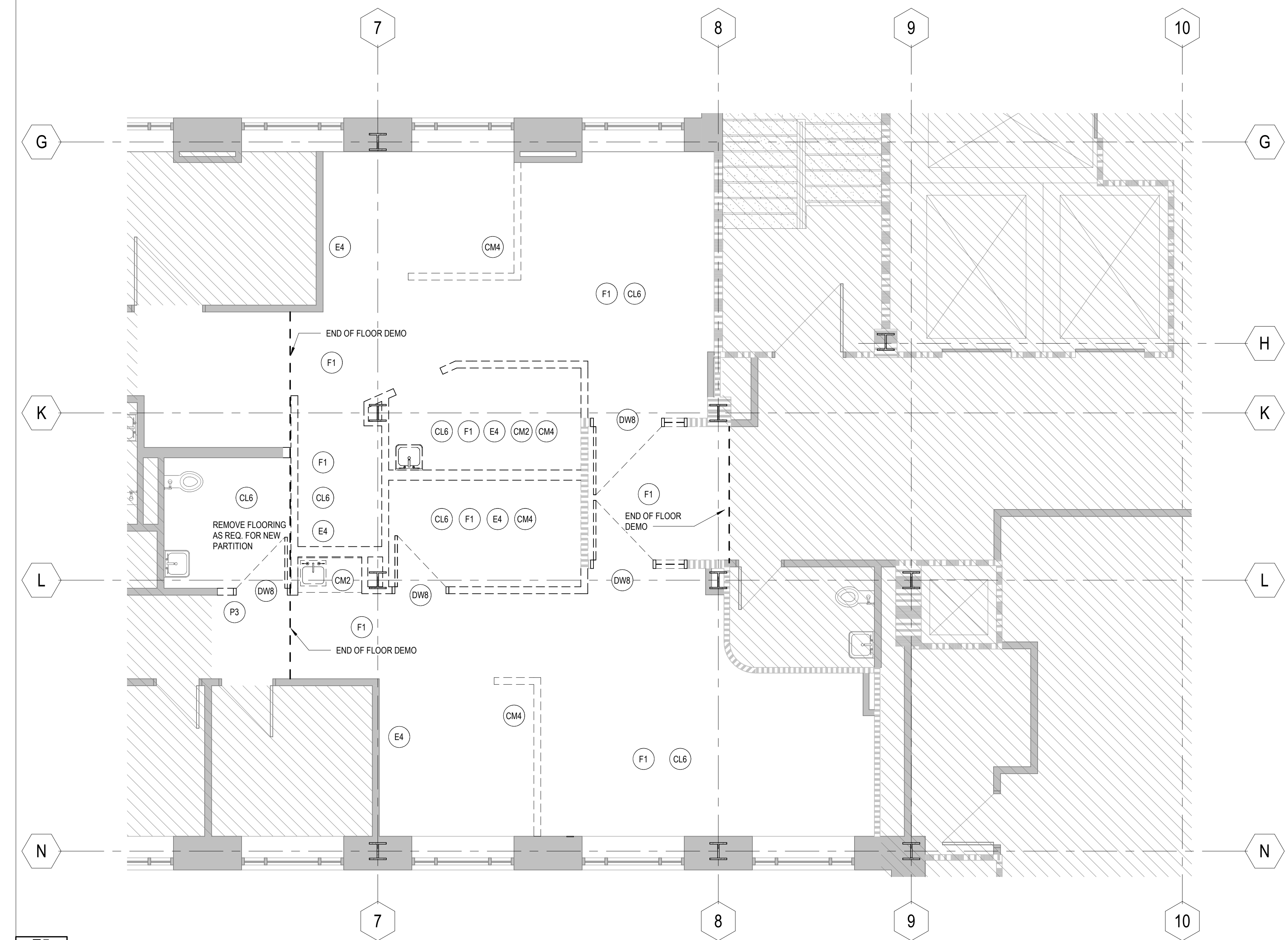
- (S1) DEMOLITION NOTE
- EXISTING CONSTRUCTION TO REMAIN
- - - - EXISTING CONSTRUCTION TO BE REMOVED

DEMOLITION NOTES:

- GENERAL NOTES:**
1. THE DEMOLITION PLANS AND ELEVATIONS ILLUSTRATE THE CONCEPT OF THE ARCHITECTURAL DEMOLITION. THEY ARE NOT INTENDED TO BE A COMPLETE REPRESENTATION OF ALL DEMOLITION WORK REQUIRED. ALL DRAWINGS AND SPECIFICATIONS ARE TO BE CONSIDERED WHEN DETERMINING THE SCOPE OF DEMOLITION FOR THE PROJECT. IT IS THE INTENT OF THE DRAWINGS AND SPECIFICATIONS TO REQUIRE DEMOLITION OF ALL BUILDING ELEMENTS AS NECESSARY FOR THE INSTALLATION OF WORK REQUIRED BY THE SCOPE OF THIS PROJECT.
 2. DASHED LINES GENERALLY REPRESENT ITEMS TO BE REMOVED. IT IS THE CONTRACTOR'S RESPONSIBILITY TO FIELD VERIFY EXACT LIMITS AND DETAILS OF REQUIRED DEMOLITION AND COORDINATE WITH PLANS AND DETAILS.
 3. REMOVE PARTITIONS TO STRUCTURE ABOVE, UNLESS OTHERWISE INDICATED BY CONSTRUCTION DETAILS.
 4. REMOVE DOORS, FRAMES AND HARDWARE INCLUDING SIDELIGHTS, TRANSOMS AND THRESHOLDS WHERE DOORS ARE SHOWN DASHED, UNLESS OTHERWISE INDICATED.
 5. REMOVE PORTIONS OF ALL SUSPENDED CEILINGS FOR THE INSTALLATION OF NEW WORK TO BE DONE ABOVE CEILINGS, UNLESS OTHERWISE INDICATED. SAVE USABLE COMPONENTS FOR REINSTALLATION WHERE CEILINGS ARE NOT BEING REPLACED.
 6. REMOVE ALL MARKER AND TACK BOARDS, SHELVING AND OTHER EQUIPMENT ON WALLS TO BE REMOVED OR FURRED.

DEMOLITION NOTE SCHEDULE

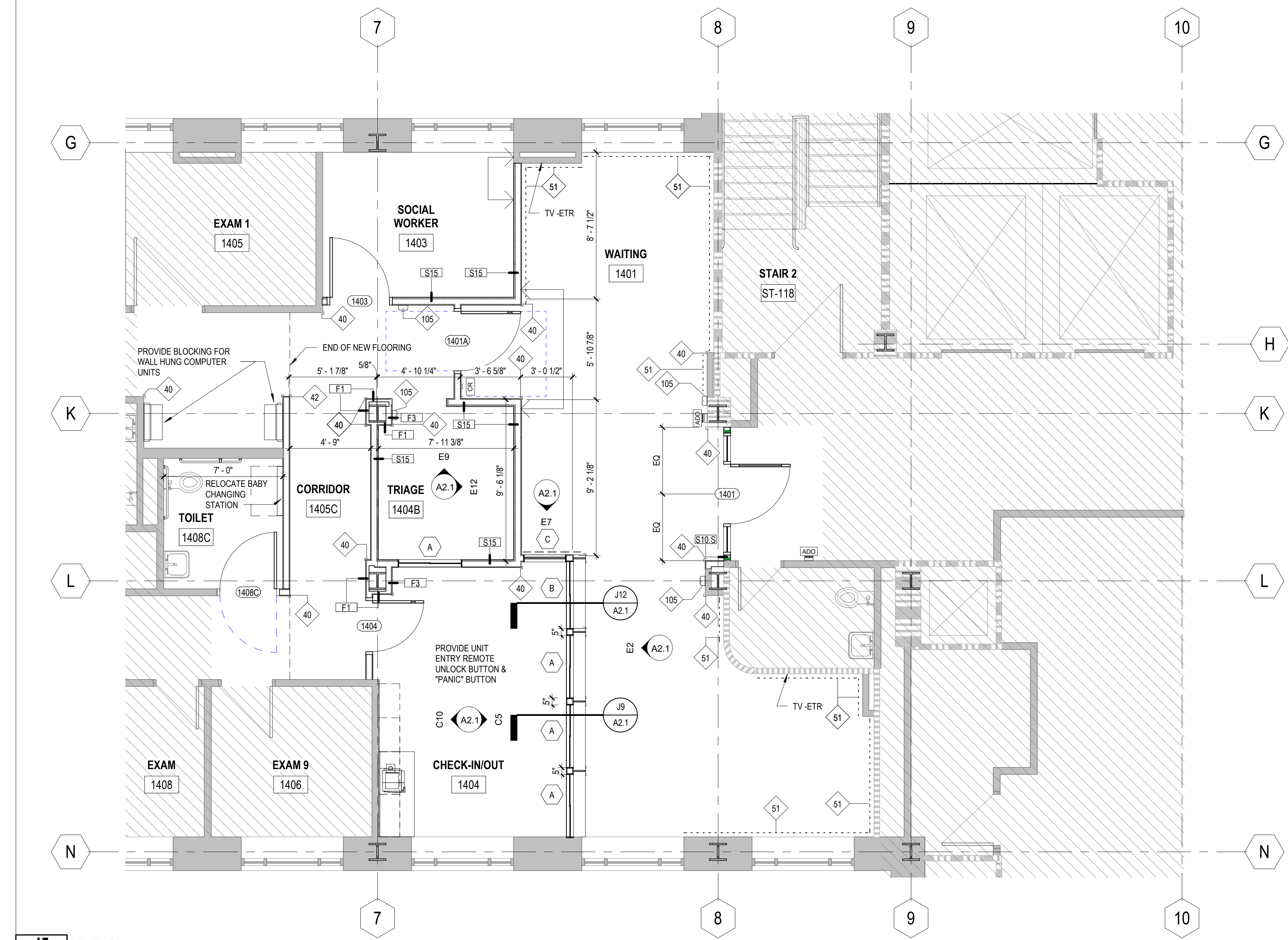
DEMO MARK	Description
CM2	REMOVE LAVATORY COUNTER AND SUPPORTS
CM4	REMOVE COUNTERTOP AND SUPPORTS COMPLETE
CL6	REMOVE ACOUSTIC CEILING SYSTEM AS REQUIRED FOR NEW CONSTRUCTION - COORDINATE WITH PLAN AND RCP
DW8	REMOVE DOOR AND FRAME
E4	REMOVE SHELVING, RACKS, HOOKS COMPLETE
F1	REMOVE VCT / VINYL SHEET FLOORING
P3	REMOVE PORTION OF PARTITION FOR NEW OPENING



E5 LEVEL 1-DEMOLITION
A1.1 1/4" = 1'-0"

GENERAL NOTES:

1. ALL DIMENSIONS ARE TO FACE OF STUD, UNO.
2. ALL DIMENSIONS TO EXISTING WALL ARE TO FACE OF FINISH.
3. ALL SPLAYS SHOWN ON PLANS ARE 45° UNO.
4. REFERENCE CODE ANALYSIS PLANS AND SPECIFICATIONS FOR EXTENT OF FIREPROOFING.
5. THE CONTRACTOR SHALL BE FULLY RESPONSIBLE FOR VERIFYING DIMENSIONS. ALL DISCREPANCIES BETWEEN ANTICIPATED AND ACTUAL CONDITIONS SHALL BE PROMPTLY BROUGHT TO THE ARCHITECT'S ATTENTION.



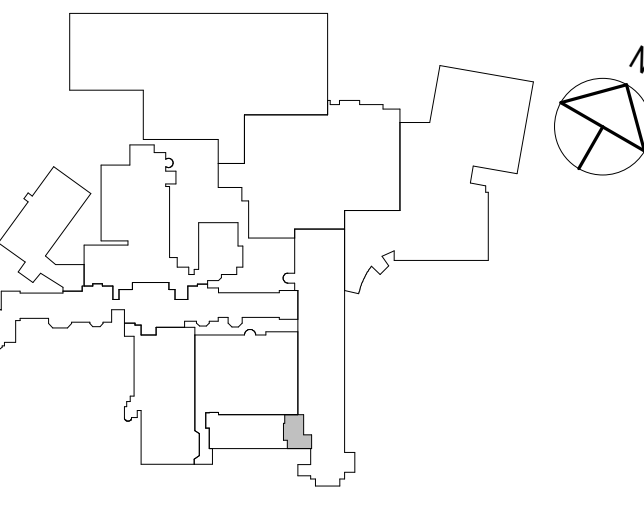
J5 LEVEL 1
A1.1 1/4" = 1'-0"

Maine Medical Center

**MAINE MEDICAL
CENTER – OPD
CLINIC
RENOVATIONS
PAVILION D, LEVEL 1**

22 Bramhall St, Portland, Maine
04102-3175

NO.	DESCRIPTION	DATE



FOR ADDITIONAL INFORMATION, REFER TO PROJECT MANUAL.

CONTENT:
FIRST FLOOR DEMO PLAN & NEW CONSTRUCTION PLAN

DRAWN BY: SRF

PROJECT NO: 17-079-00

DATE: 04/23/18

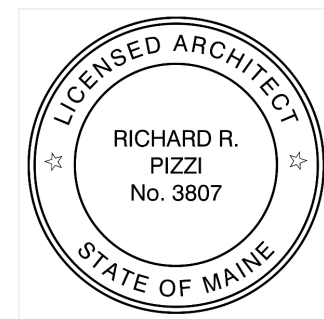
REVISED:

SCALE: As Indicated

A1.1

Project Phase
CONSTRUCTION DOCUMENTS

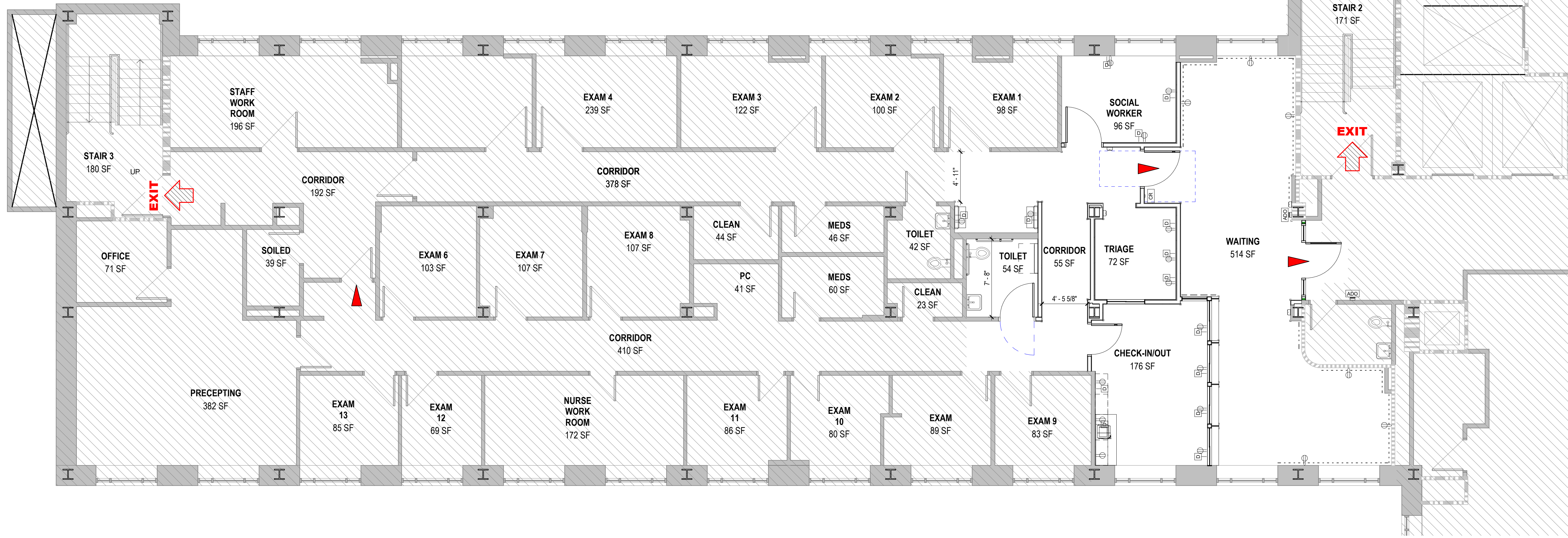
COPYRIGHT © 2018 BY LAVALLEEBRENSINGER PROFESSIONAL ASSOCIATION. ALL RIGHTS RESERVED. NO REPRODUCTION WITHOUT PERMISSION.



GRAPHICS LEGEND

- NOT IN SCOPE
 - PROPOSED FIRE RATED CONSTRUCTION
 - 1 HR RATED SMOKE PARTITION
 - EXISTING 1 HR RATED SMOKE PARTITION
 - EXISTING 2 HR FIRE BARRIER
 - MEANS OF EGRESS
 - R. XXX - REQUIRED EGRESS CAPACITY IN PERSONS
 - P. XXX - PROVIDED EGRESS CAPACITY IN PERSONS
 - EXIT
 - HORIZONTAL EXIT
 - HORIZ. EXIT
 - EXIT ACCESS
 - REQUIRED PERSON LOAD IN EGRESS PATH
 - OTHER
 - FEC - FIRE EXTINGUISHER CABINET
 - FE - FIRE EXTINGUISHER
 - EXISTING CONSTRUCTION
 - NEW CONSTRUCTION
- SEE DOOR SCHEDULE FOR DOOR ASSEMBLY FIRE-RATINGS.

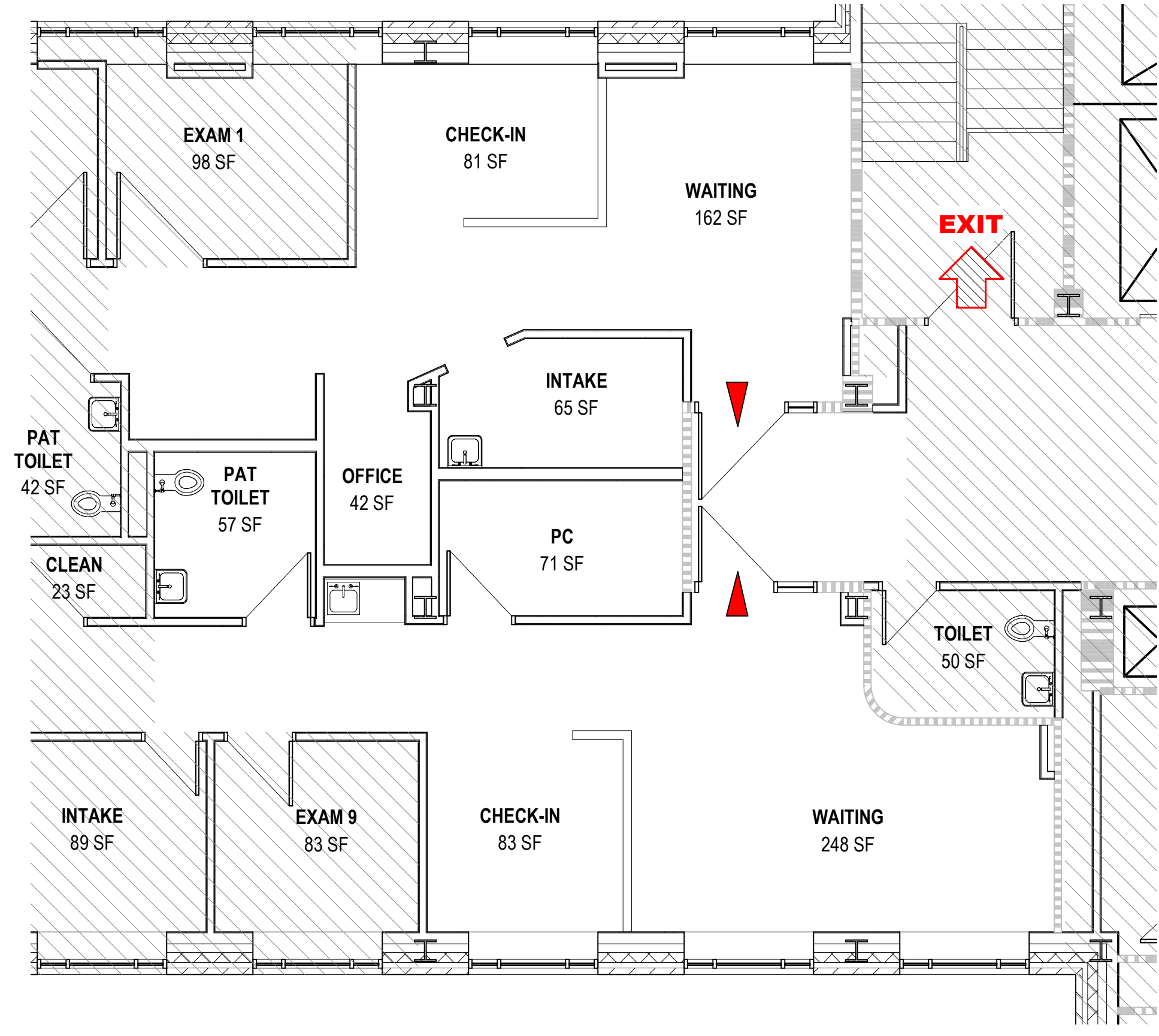
AREA OF SCOPE: 1,182 SF
AREA OF CLINIC: 4,760 SF



E1 LEVEL 1 - OPD CODE PLAN
 A0.2 3/16" = 1'-0"

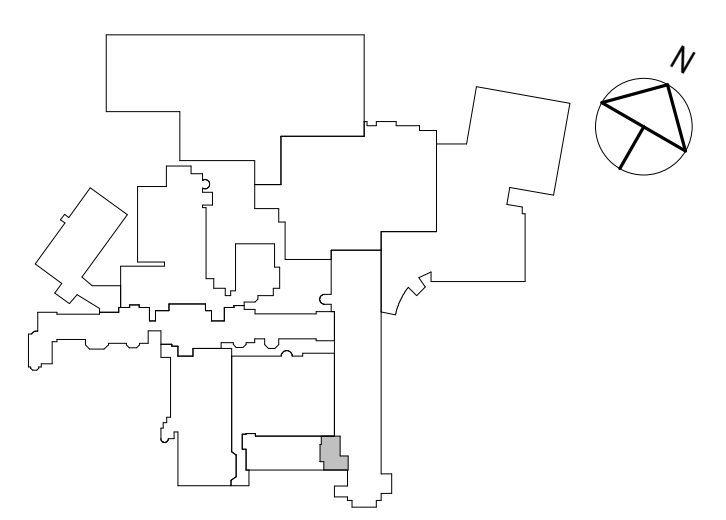
Maine Medical Center
MAINE MEDICAL CENTER - OPD CLINIC RENOVATIONS PAVILION D, LEVEL 1

22 Bramhall St, Portland, Maine 04102-3175



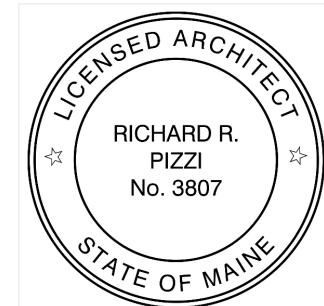
J7 LEVEL ONE - EXISTING OPD WAITING AND CHECK-IN
 A0.2 3/16" = 1'-0"

MAINE MEDICAL CENTER - OPD RENOVATION LBA 17-079-00 CD PHASE APRIL 2018	
RENOVATION ANALYSIS	
CODES IN EFFECT	MAINE UNIFORM BUILDING AND ENERGY CODE: EXISTING BUILDING CODE, IEBC 2015, AMENDED COMMERCIAL BUILDING CODE OF MAINE, IBC 2015, AMENDED ENERGY CONSERVATION CODE IECC 2009, AMENDED MAINE STATE PLUMBING CODE, UPC, 2015 MAINE MECHANICAL STANDARDS: ASHRAE 62.1, 2013, NFPA 90A MAINE ELECTRICAL CODE: NFPA 70, 2017 MAINE ACCESSIBILITY CODE: MAINE 5 MRS; 4594-G; ADAAG, 2010 NFPA 101 LIFE SAFETY CODE, 2009 NFPA 1 FIRE CODE, 2006
PROJECT DESCRIPTION	
CLASSIFICATION OF WORK	RENOVATION OF 1,128 SF WORK AREA IN PAVILION D ON LEVEL 2 IEBC LEVEL 2 ALTERATION NFPA 101 CHAPTER 43 - MODIFICATION NEW WORK COMPLIES W/ REQUIREMENTS OF EXISTING USE CHAPTERS
EXISTING BUILDING DOCUMENTATION	
GROSS BUILDING AREA	NO CHANGE
# OF STORIES	6 STORIES
SPRINKLER SYSTEM	MONITORED SPRINKLER SYSTEM
CONSTRUCTION TYPE	IBC TYPE 1-A NON-COMBUSTIBLE UNPROTECTED NFPA TYPE I (332)
CONSTRUCTION SYSTEM & PROTECTION LEVEL	FOUNDATION: CAST-IN-PLACE CONCRETE EXTERIOR WALLS: PRIMARY STRUCTURE: 3-HR PROTECTED STEEL COLUMNS AND BEAMS FLOOR SYSTEM: 2-HR PROTECTED SECONDARY STL BEAMS, CONC DECK ROOF SYSTEM: 1-1/2 HR PROTECTED SECONDARY STL BEAMS, STEEL DECK
WORK AREA OCCUPANCY GROUPS	
OCCUPANCY	BUSINESS - NO CHANGE
OCCUPANCY CATEGORY	CATEGORY IV
IBC 1904.5	
WORK AREA OCCUPANT LOADS	
NFPA 7.3.1.2	NO CHANGE IN OCCUPANT LOAD, OFFICE AND WAITING SPACES RECONFIGURED, AREA NOT CHANGED
FIRE RESISTIVE CONSTRUCTION REQUIREMENTS	
SHAFT ENCLOSURES	STAIRS, ELEVATORS, OTHER SHAFTS: 2-HR FIRE BARRIERS
CORRIDORS	BUSINESS: NO REQUIREMENT W/ SPRINKLERS
COMPARTMENTATION	NO CHANGE IN EXISTING COMPARTMENTATION
HAZARD PROTECTION	STORAGE ROOMS 100 SF>: 1-HR FB OR SPRINKLER
INTERIOR FINISH	101 - A10.2.2
MEANS OF EGRESS	
NFPA TABLE A7.6 BUSINESS	COMMON PATH OF TRAVEL: 100 FT DEAD END: 50 FT TRAVEL DISTANCE LIMIT: 300 FT



FOR ADDITIONAL INFORMATION, REFER TO PROJECT MANUAL.

CONTENT:	CODE ANALYSIS TEXT, SYMBOLS AND RATINGS
DRAWN BY:	SRF
PROJECT NO.:	17-079-00
DATE:	04/23/18
REVISED:	
SCALE:	As Indicated
A0.2	
Project Phase CONSTRUCTION DOCUMENTS	
COPYRIGHT © 2018 BY LAVALLEEBRENSINGER PROFESSIONAL ASSOCIATION. ALL RIGHTS RESERVED. NO REPRODUCTION WITHOUT PERMISSION.	



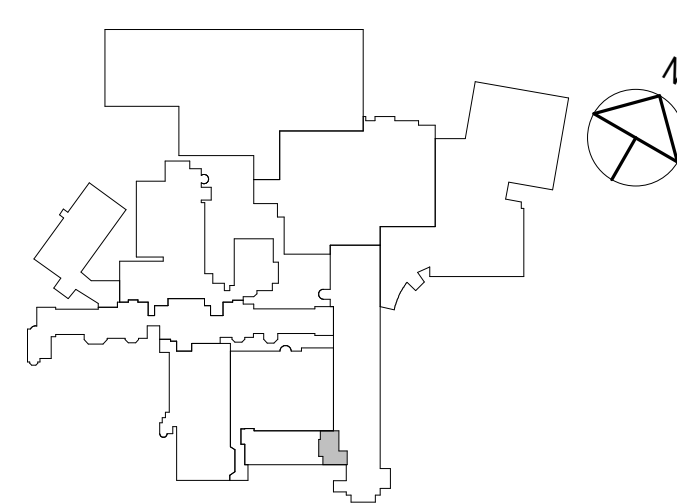
Reviewed for Code Compliance
Permitting and Inspections Department
Approved with Conditions
07/13/2018

Maine Medical Center

**MAINE MEDICAL
CENTER – OPD
CLINIC
RENOVATIONS
PAVILION D, LEVEL 1**

22 Bramhall St, Portland, Maine
04102-3175

NO.	DESCRIPTION	DATE

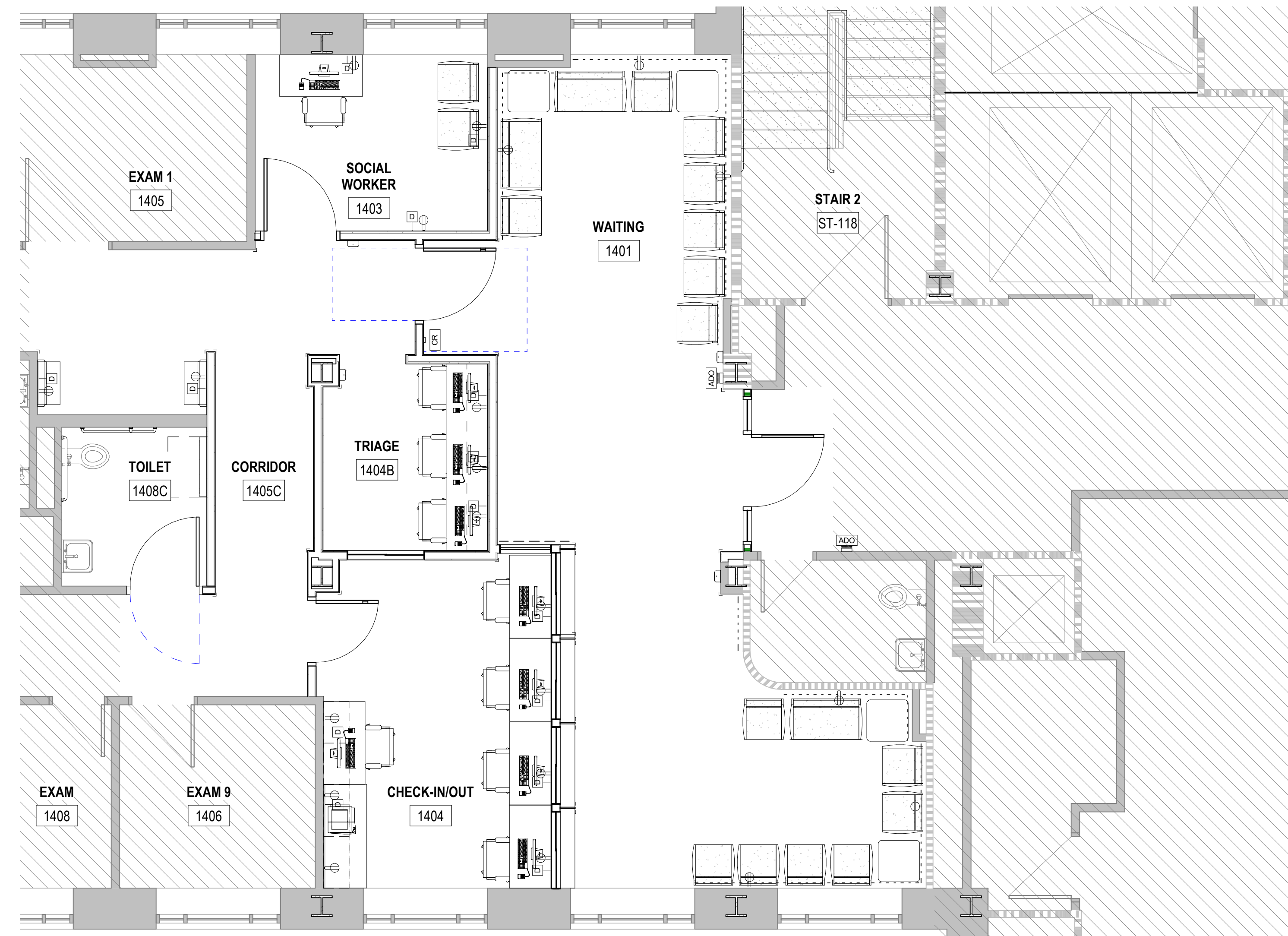


CONTENT:
FIRST FLOOR EQUIPMENT, FURNITURE,
FLOOR PATTERN PLAN

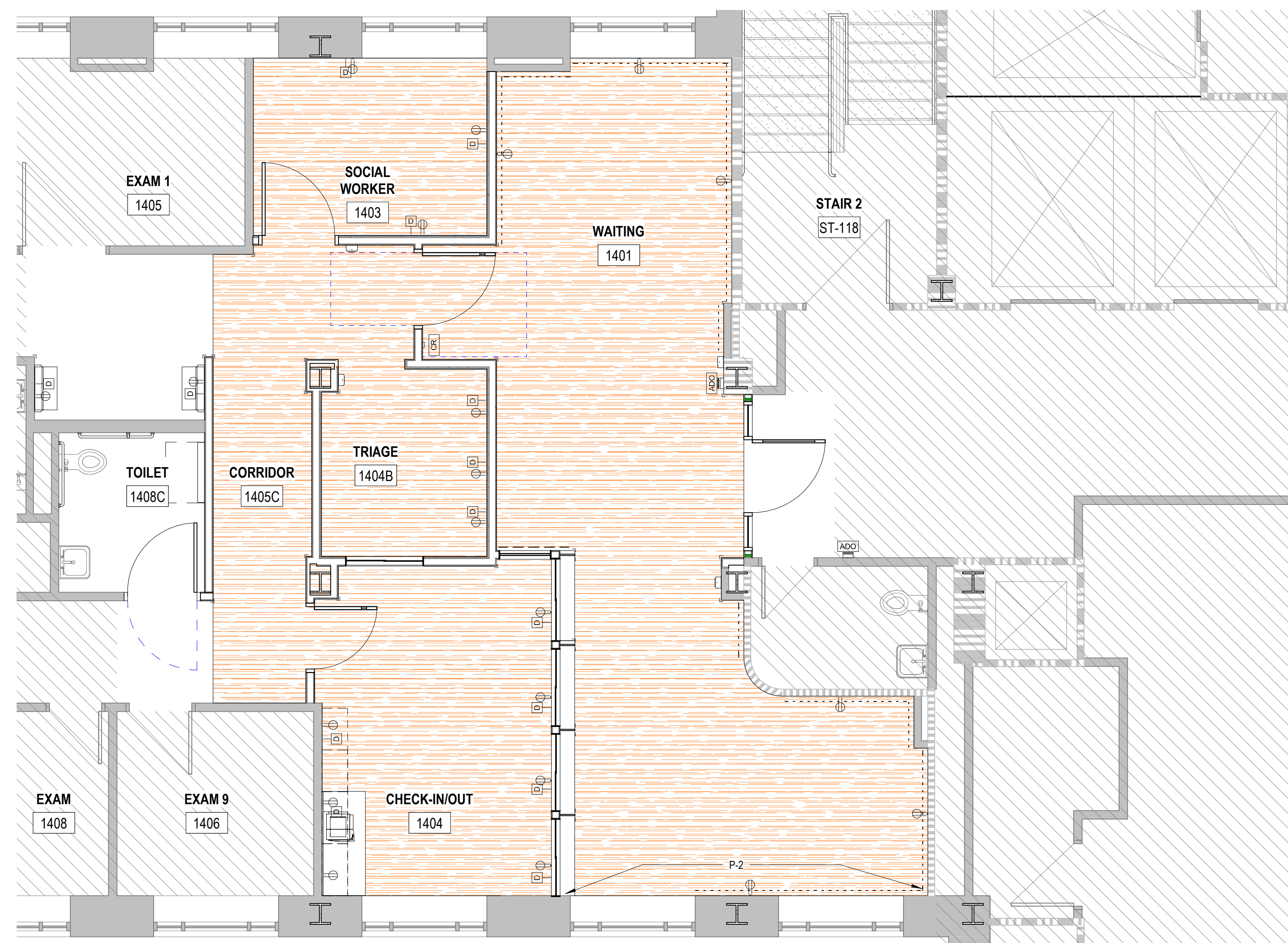
DRAWN BY: SRF
PROJECT NO: 17-079-00
DATE: 04/23/18
REVISED:
SCALE: As Indicated

A11.1

Project Phase
CONSTRUCTION DOCUMENTS
COPYRIGHT © 2018 BY LAVALLEEBRENSINGER
PROFESSIONAL ASSOCIATION. ALL RIGHTS RESERVED.
NO REPRODUCTION WITHOUT PERMISSION.



E8 LEVEL 1 - EQUIPMENT PLAN
A11.1 1/4" = 1'-0"



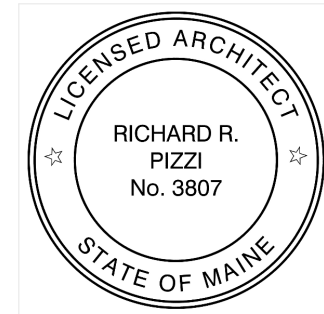
J8 LEVEL 1 - INTERIOR DESIGN PLAN
A11.1 1/4" = 1'-0"

ID FINISH SCHEDULE								
ROOM #	ROOM NAME	FIN FLOORING	FIN WALL BASE	FIN WALL FINISH	FIN WALL PROTECTION	FIN MILLWORK/ CASEWORK	FIN COUNTERTOP MATERIAL	REVISIONS
1401	WAITING	SV-1	RB-1	P-1/P-2	WPP-1/CG-1			
1403	SOCIAL WORKER	SV-1	RB-1	P-1				
1404	CHECK-IN/OUT	SV-1	RB-1	P-1		PLAM-2	SS-1/PLAM-1	
1404B	TRIAGE	SV-1	RB-1	P-1	CG-1			
1405C	CORRIDOR	SV-1	RB-1	P-1				
1408C	TOILET	ETR	PTM	PTM				

FINISH LEGEND	
SV-1	TYPE: SHEET VINYL MANUF: MANNINGTON SERIES: AMTICO WIDTH: TBD COLOR: GRANDE PECAN - AROW7850
09 65 00	RESILIENT BASE
RB-1	TYPE: RUBBER BASE / VINYL BASE MANUF: JOHNSONITE SERIES: TBD HEIGHT: TBD COLOR: TBD
09 90 00	PAINT and COATING
P-1	TYPE: PAINT MANUF: TBD COLOR: TBD FINISH: -
P-2	TYPE: PAINT MANUF: TBD COLOR: TBD FINISH: -
10 26 01	WALL PROTECTION PANEL
WPP-1	TYPE: WALL PROTECTION SHEETS MANUF: AGROVYN SERIES: TBD THICKNESS: TBD COLOR: TBD
CG-1	TYPE: CORNER GUARDS NOTES: SEE FLOOR PLAN FOR TYPE CG COLOR CHART P-1 XXXX #0000 P-2 XXXX #0000
06 20 00 / 06 41 00 / 12 36 00	PLASTIC LAMINATE
PLAM-1	TYPE: PLASTIC LAMINATE MANUF: TBD COLOR: TBD FINISH: -
PLAM-2	TYPE: PLASTIC LAMINATE MANUF: TBD COLOR: TBD FINISH: -
12 36 00	SOLID SURFACE
SS-1	TYPE: CORIAN MANUF: DUPONT SERIES: GLACIER WHITE COLOR: -
MISCELLANEOUS	
TBD	TO BE DETERMINED
PTM	PATCH TO MATCH
ETR	EXISTING TO REMAIN

GENERAL NOTES:

- REFER TO FINISH SCHEDULE FOR MORE INFORMATION. REFER TO DETAIL J8 FOR FLOOR PATTERNS AND ACCENT WALL LOCATIONS.
- HM DOOR FRAMES AND WINDOW FRAMES ARE TO BE PTD *** P-1 OR TO MATCH ADJACENT WALLS *** U.N.O ON DRAWINGS OR SCHEDULE. *** TRANSITIONS SHALL OCCUR ON THE INSIDES OF THE DOOR STOP. ***
- ALL GWB CEILINGS AND SOFFITS SHALL BE PAINTED P-1 OR TO MATCH ADJACENT WALLS.
- ALL FINISHED FLOORING SHALL EXTEND BENEATH CASEWORK, MILLWORK, AND PLUMBING FIXTURES UNO
- ALL SHEET FLOORING SEAMS SHALL BE WELDED WITH MATCHING WELD COLORS.
- FEATHER SUBFLOOR UNDER NEW FLOORING TO ALIGN TOP OF NEW RESILIENT FLOOR WITH TOP OF EXISTING FLOOR SO NO TRANSITION STRIPS ARE REQUIRED BETWEEN EXISTING AND NEW FLOORINGS.
- WINDOW SILLS SHALL BE ETR.
- CORNER GUARDS ADJACENT TO WALL PROTECTION SHALL TERMINATE AT WALL PROTECTION TERMINATION HEIGHT.
- ALLOW ADDITIONAL LEAD TIME FOR ORDERING, SHIPPING, AND FABRICATION OF SPECIFIED INTERIOR FINISH MATERIALS IN MANUFACTURER AVAILABLE SHEET SIZES. **SUBSTITUTIONS WILL NOT BE ACCEPTED.**
- ALL ARCHITECTURE INTERIOR SHEET DIMENSIONS ARE TO FACE OF FINISH, UNO.



Reviewed for Code Compliance
Permitting and Inspections Department
Approved with Conditions
07/13/2018

A
B
C
D
E
F
G
H
I
J

Maine Medical Center

**MAINE MEDICAL
CENTER – OPD
CLINIC
RENOVATIONS
PAVILION D, LEVEL 1**

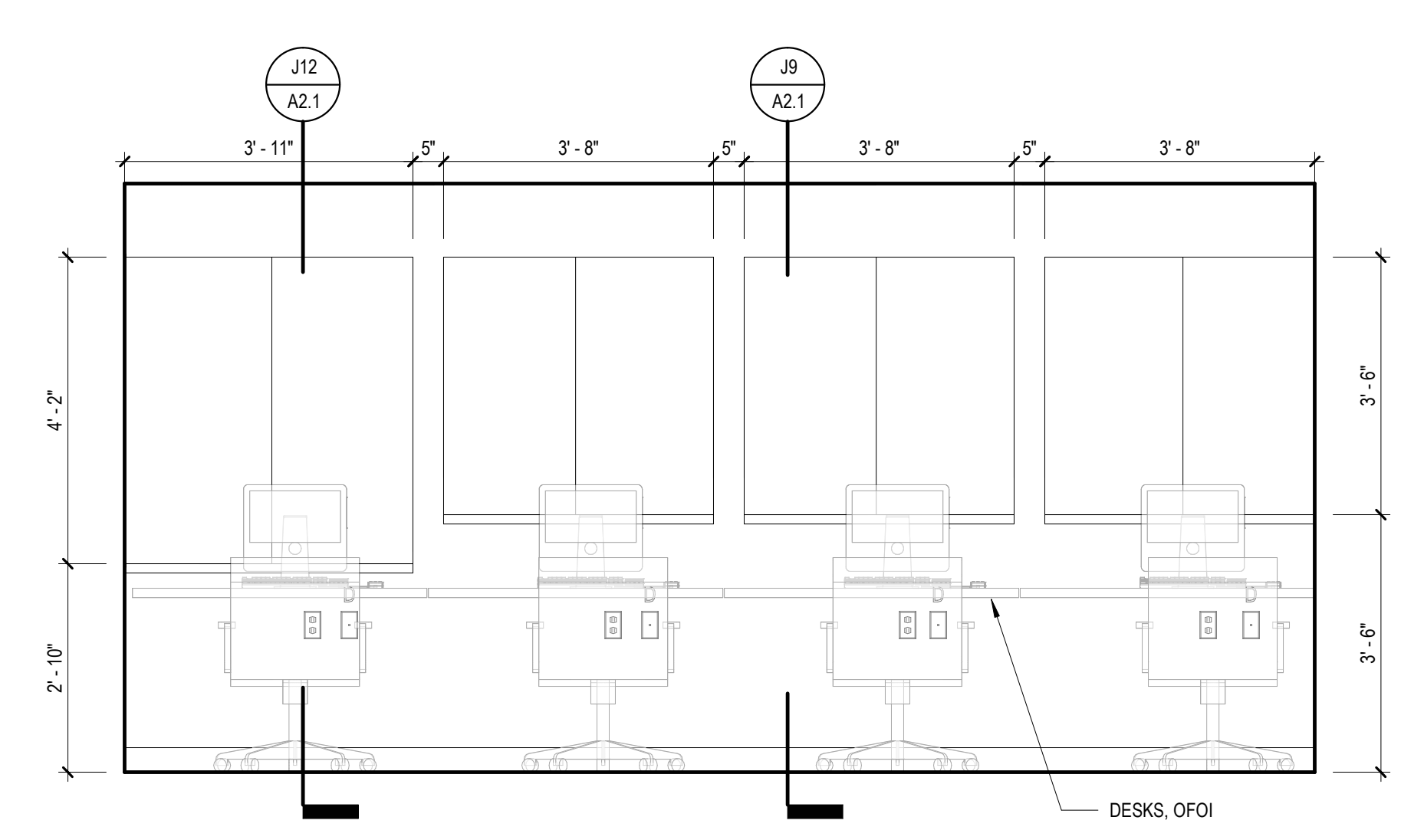
22 Bramhall St, Portland, Maine
04102-3175

NO.	DESCRIPTION	DATE

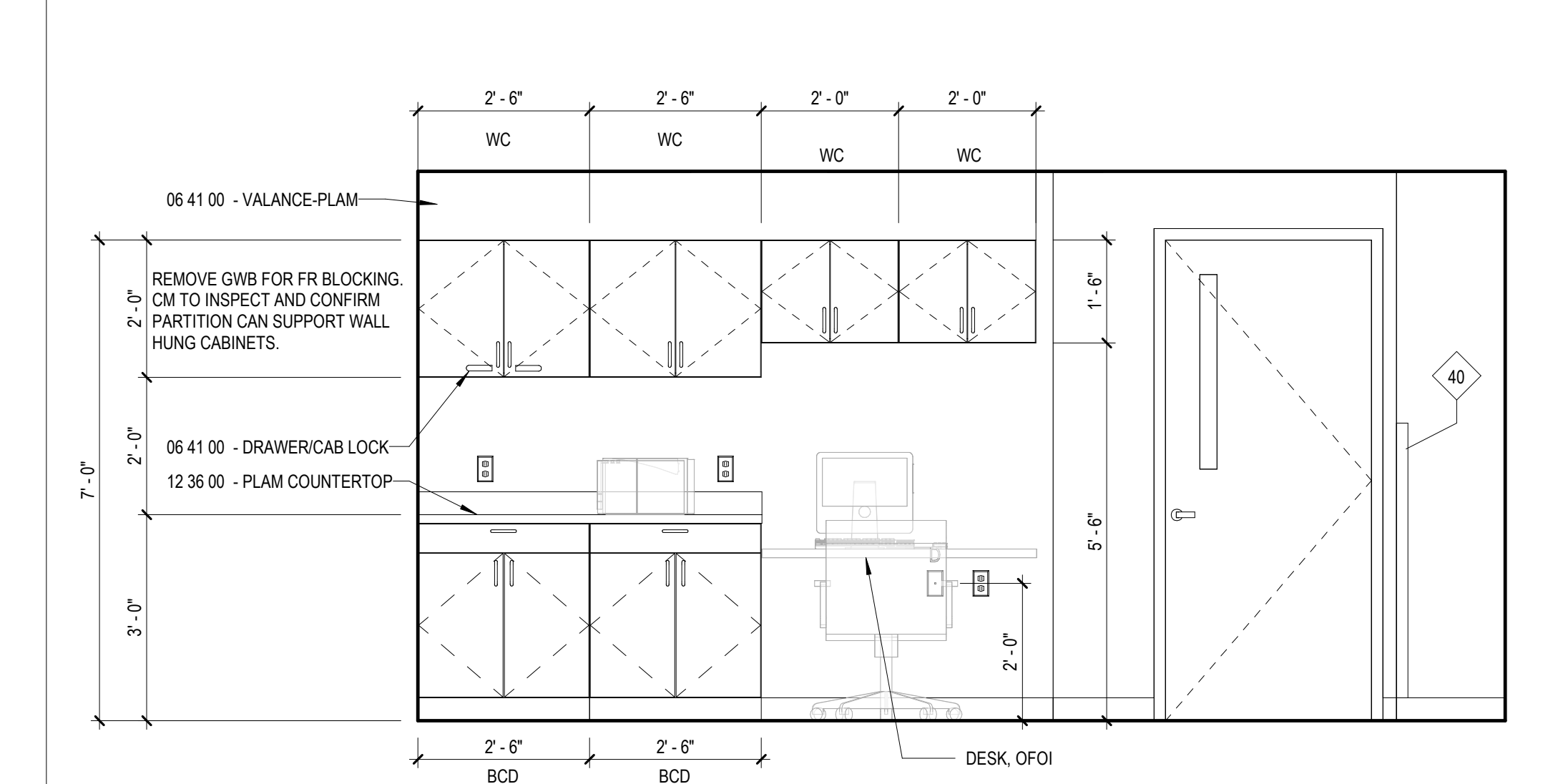


FOR ADDITIONAL INFORMATION, REFER TO PROJECT MANUAL.

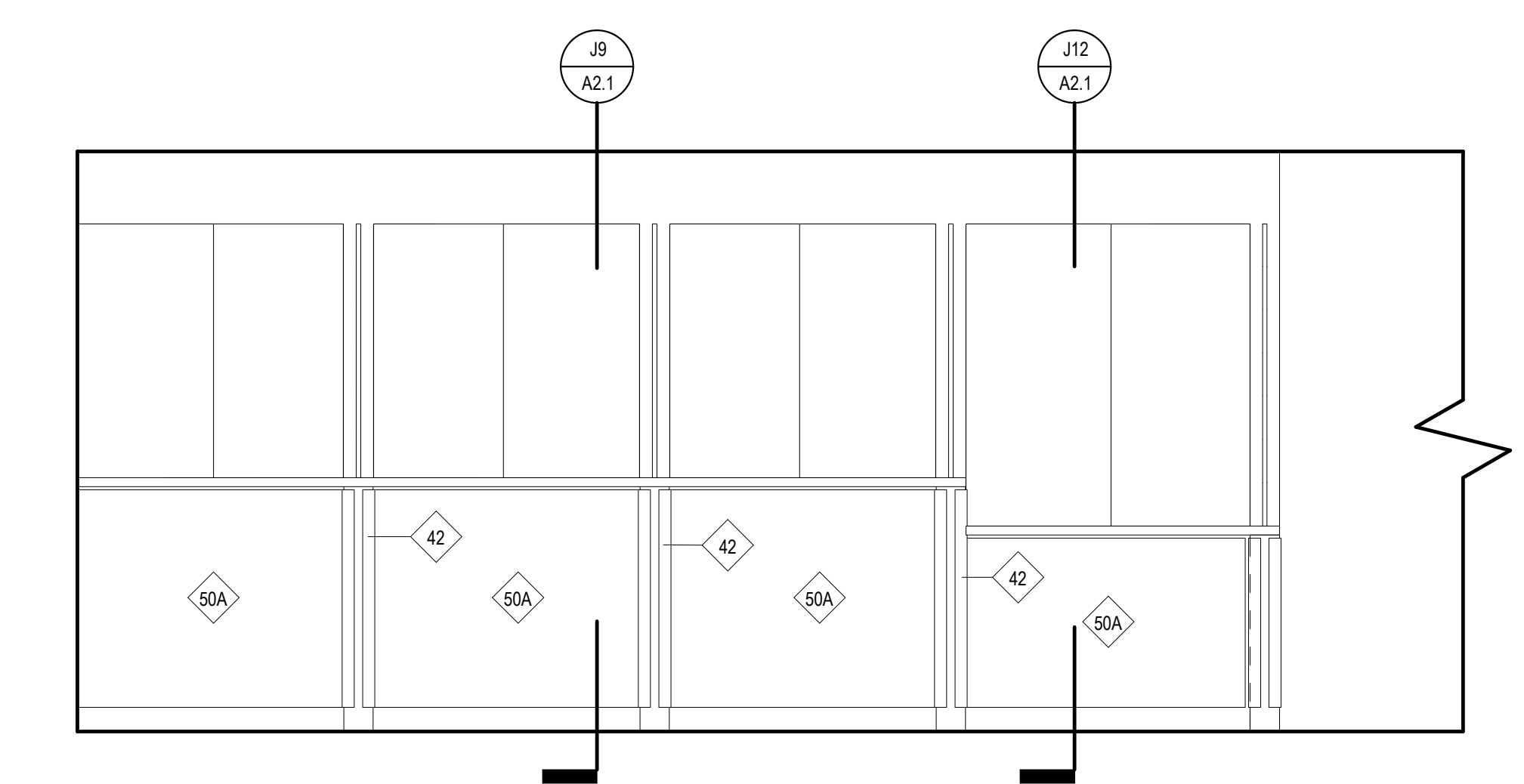
CONTENT: INTERIOR ELEVATIONS & MILLWORK DETAILS	
DRAWN BY:	SRF
PROJECT NO.:	17-079-00
DATE:	04/23/18
REVISED:	
SCALE:	As Indicated
A2.1	
Project Phase CONSTRUCTION DOCUMENTS	
COPYRIGHT © 2018 BY LAVALLEEBRENSINGER PROFESSIONAL ASSOCIATION. ALL RIGHTS RESERVED. NO REPRODUCTION WITHOUT PERMISSION.	



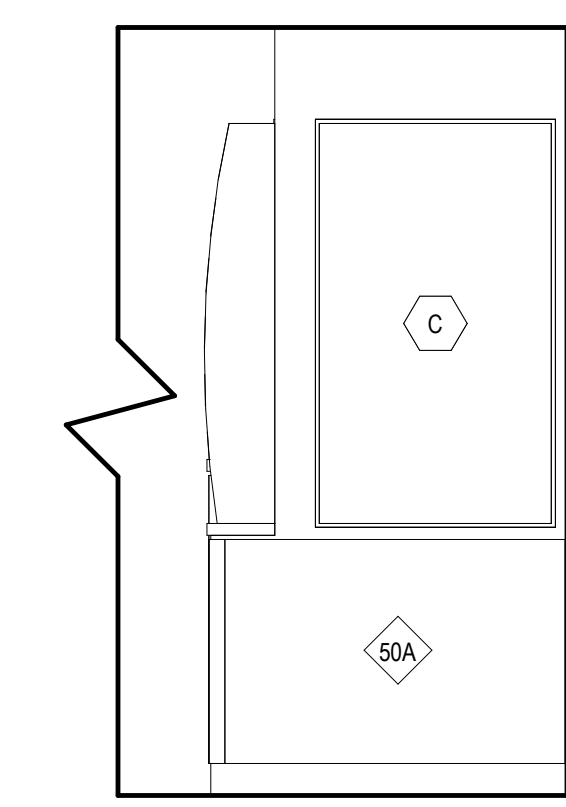
C5 CHECK-IN/OUT - ELEVATION A
A2.1 1/2" = 1'-0"



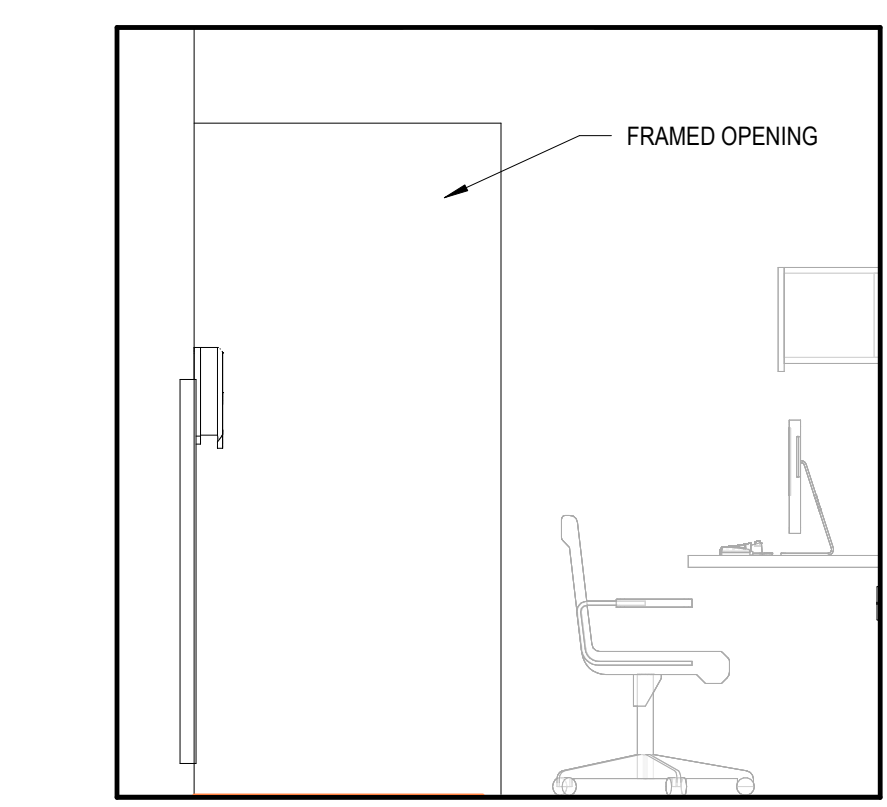
C10 CHECK-IN/OUT - ELEVATION B
A2.1 1/2" = 1'-0"



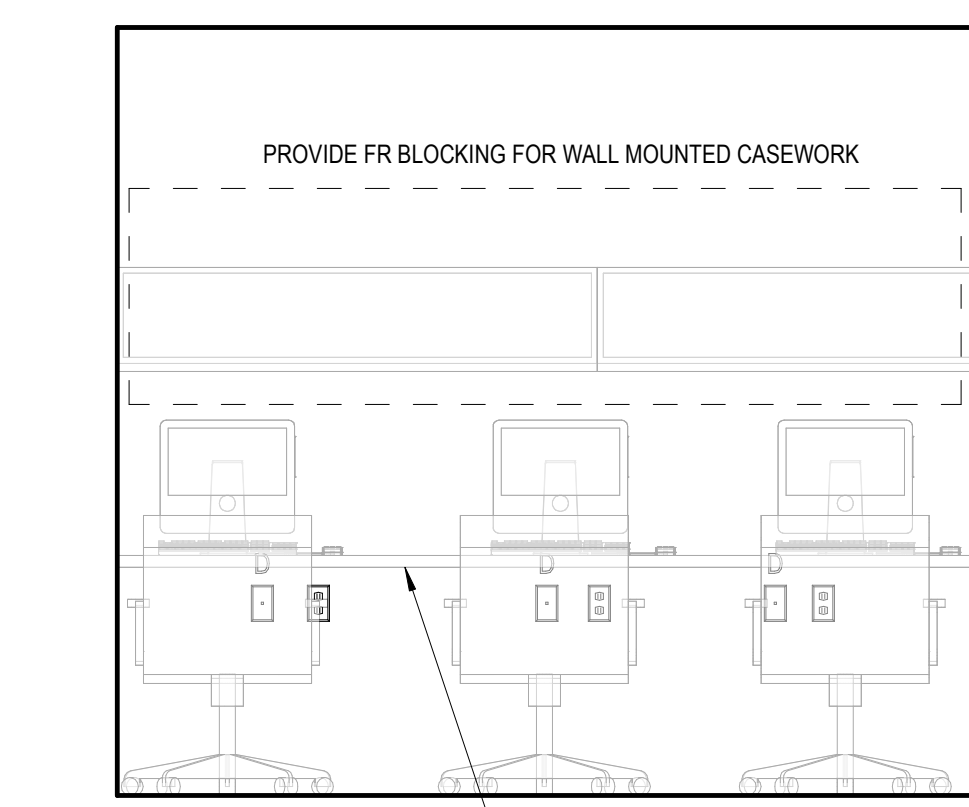
E2 CHECK-IN/OUT - ELEVATION C
A2.1 1/2" = 1'-0"



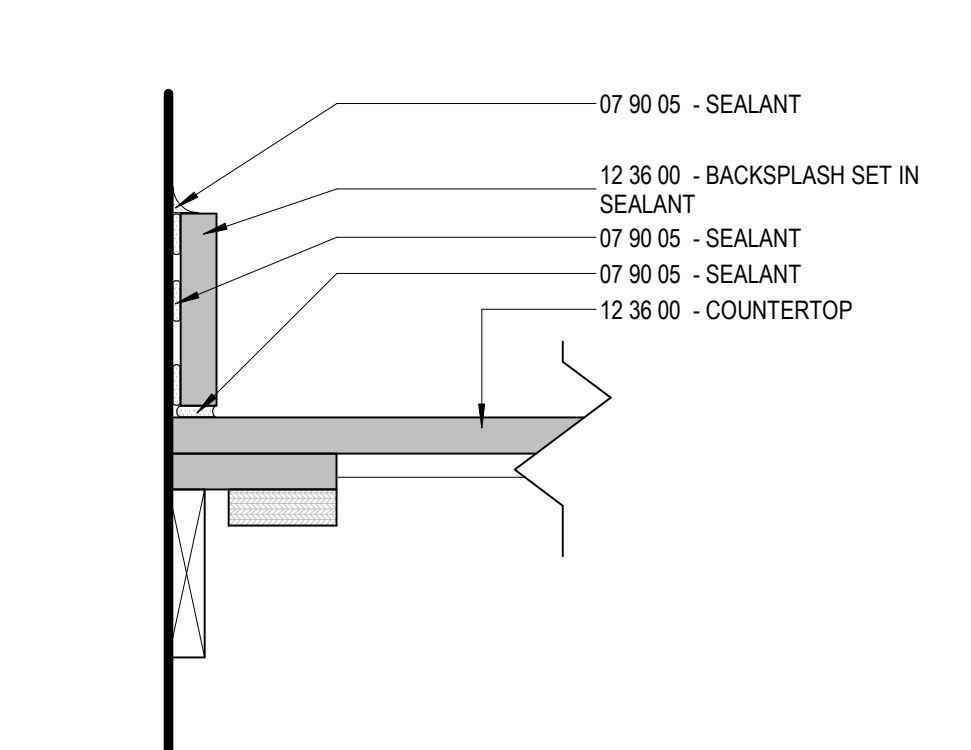
E7 CHECK-IN/OUT - ELEVATION D
A2.1 1/2" = 1'-0"



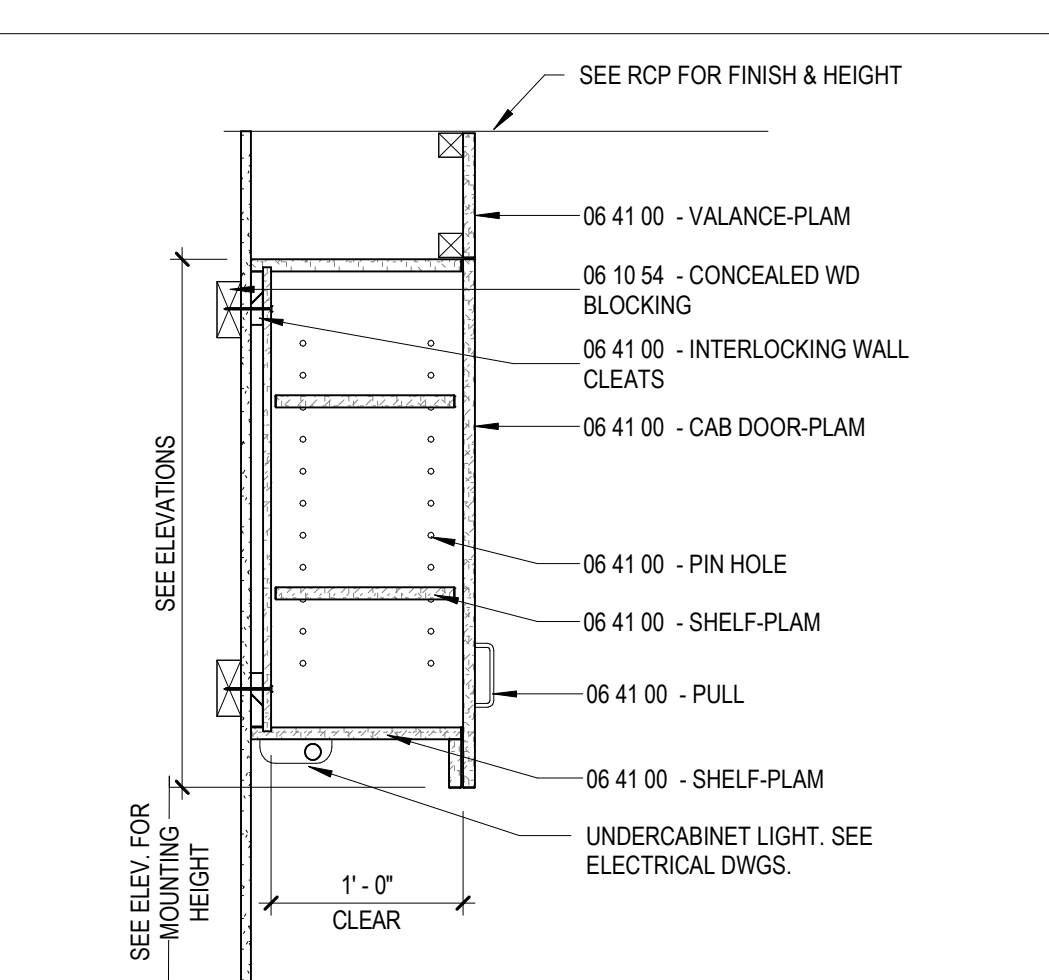
E9 TRIAGE - ELEVATION A
A2.1 1/2" = 1'-0"



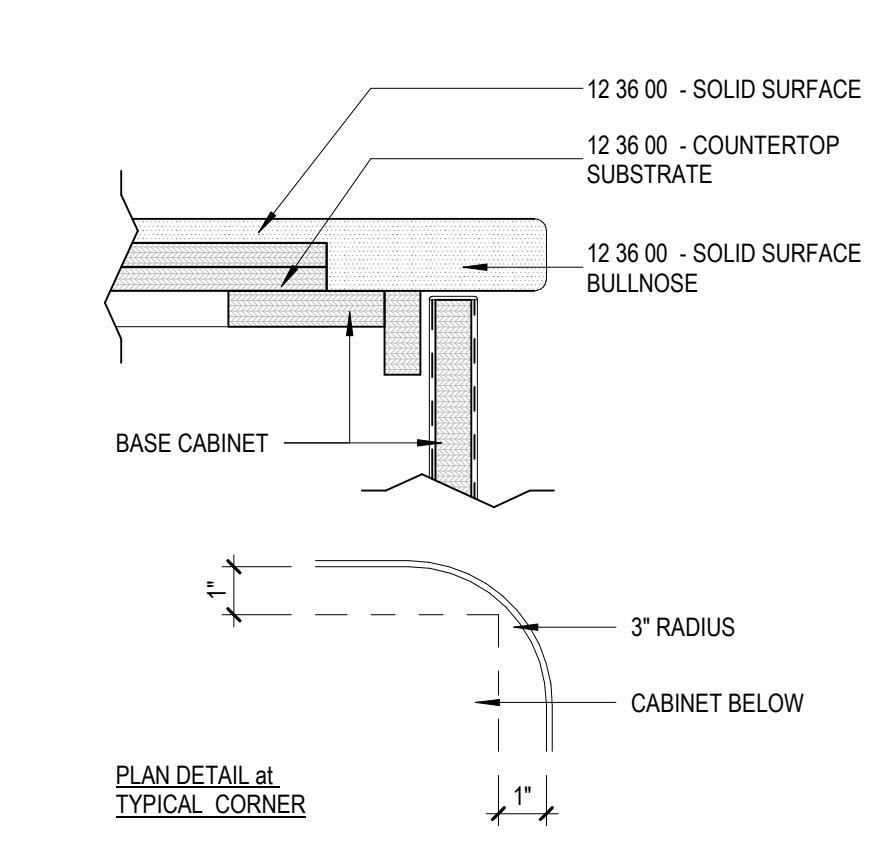
E12 TRIAGE - ELEVATION B
A2.1 1/2" = 1'-0"



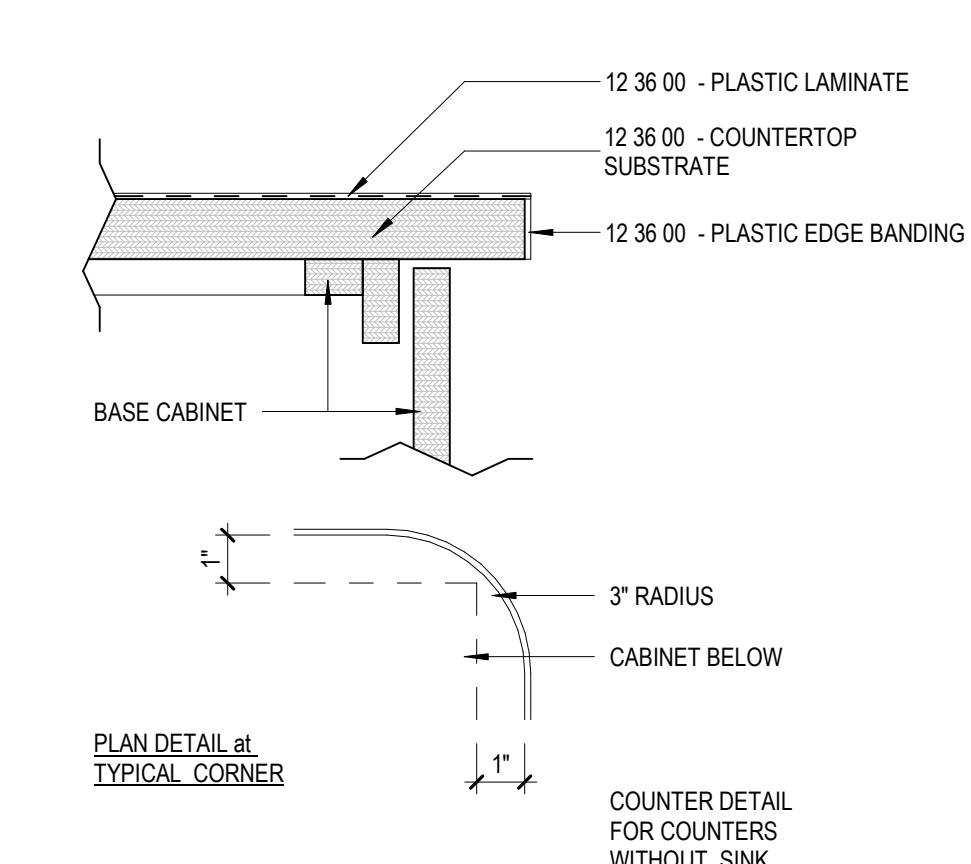
H3 BACKSPASH DETAIL
A2.1 3" = 1'-0"



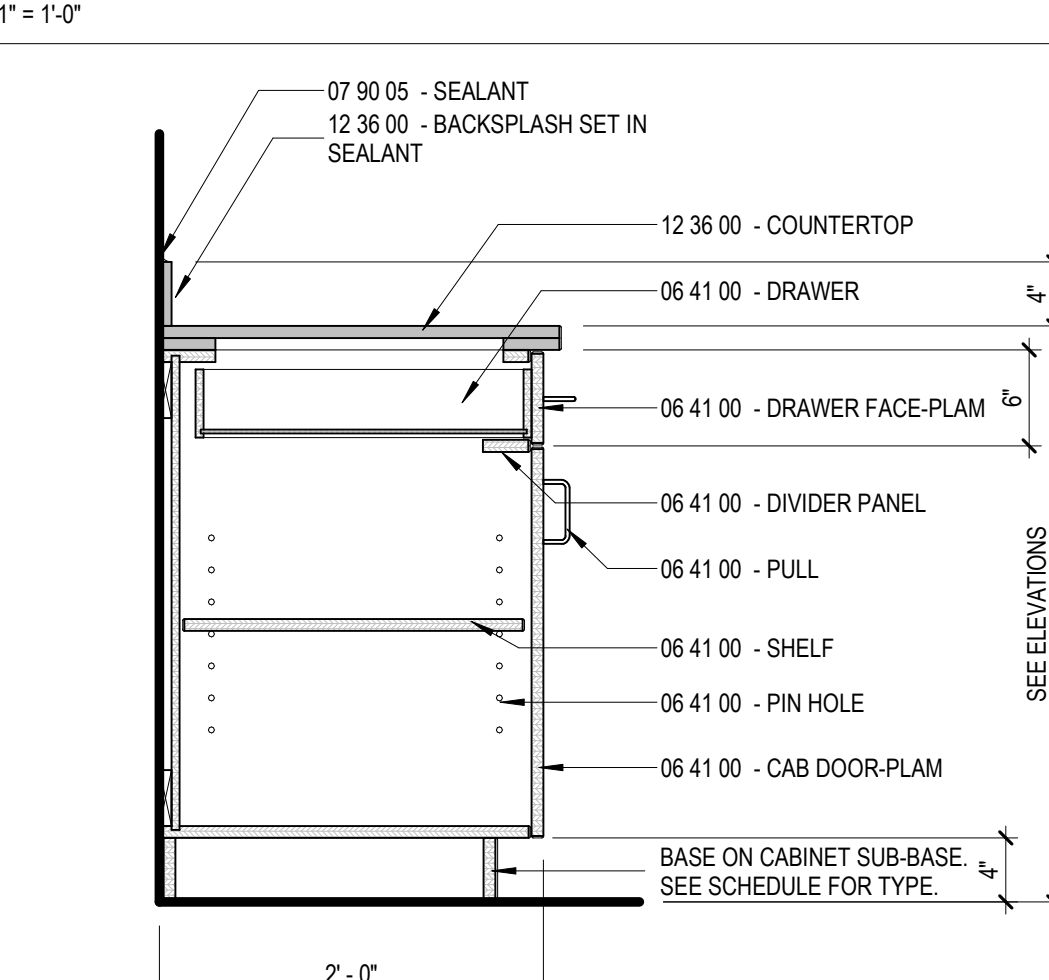
H6 WALL CABINET SECTION with LIGHT VALANCE (WC)
A2.1 1" = 1'-0"



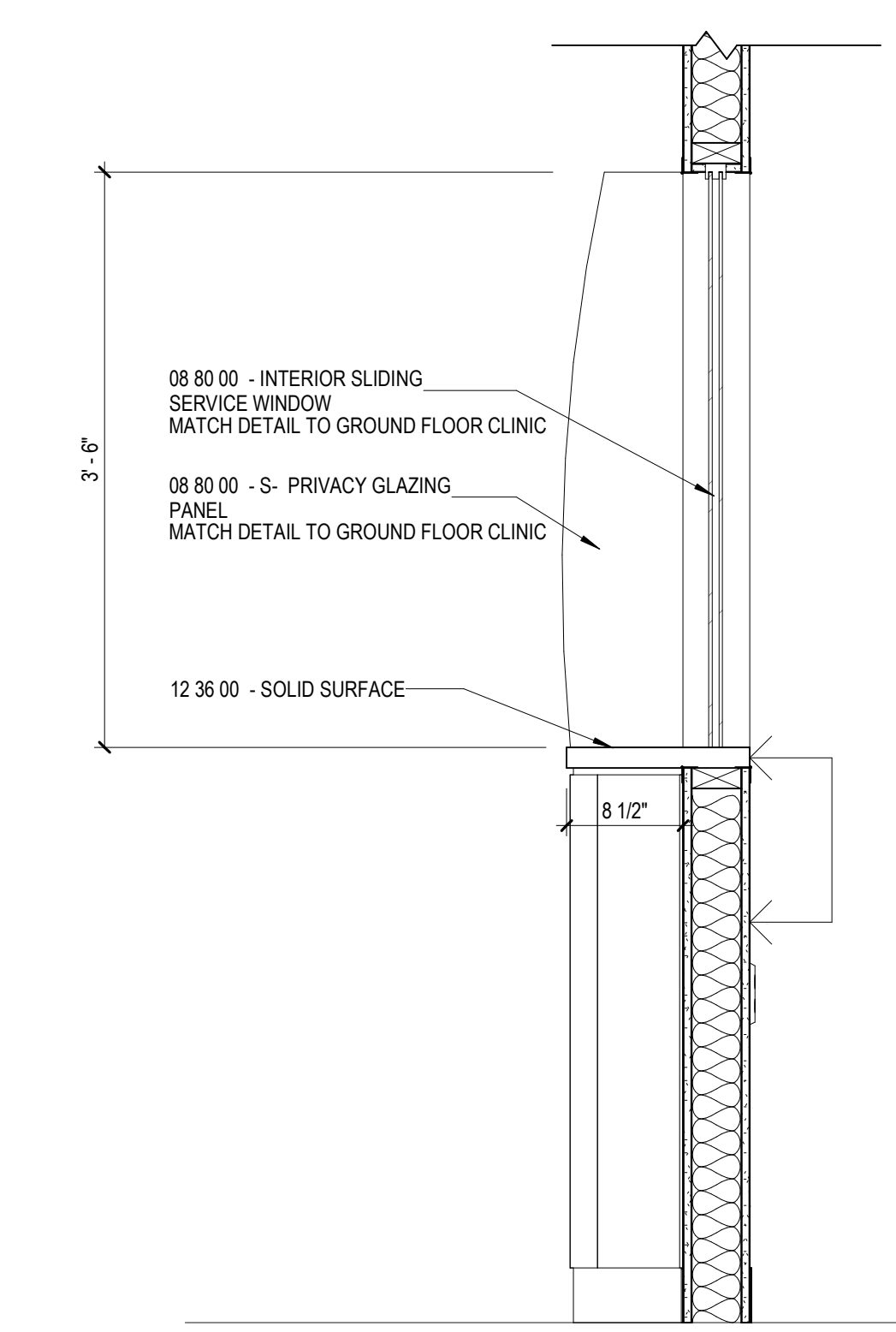
J1 COUNTER EDGE DETAIL - SOLID SURFACE EDGE
A2.1 3" = 1'-0"



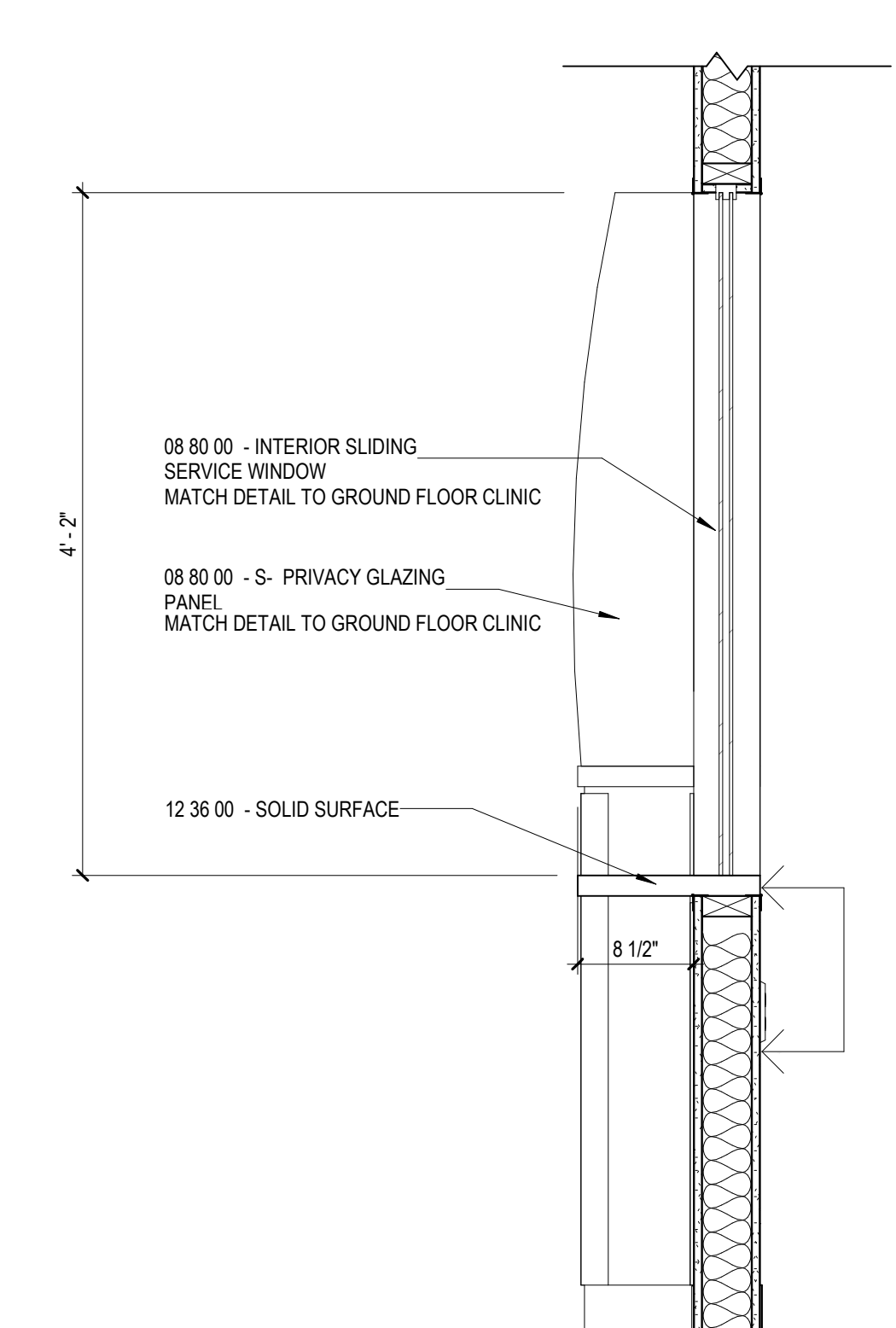
J3 COUNTER EDGE DETAIL - PLAM EDGE
A2.1 3" = 1'-0"



J6 BASE CABINET SECTION w DRAWER SECTION (BCD)
A2.1 1" = 1'-0"



J9 CHECK-IN/OUT SECTION
A2.1 1" = 1'-0"



J12 CHECK-IN/OUT SECTION - ADA
A2.1 1" = 1'-0"

1 2 3 4 5 6 7 8 9 10 11 12 13 14

4/23/2018 12:42:29 PM C:\projects\17-079-00\MDC OPD Clinic_v18_rfl.dwg

